



# THE RITZ - CARLTON RESIDENCES

MIAMI BEACH

## Villa D1

3 Bedrooms | 3.5 Bathrooms | Garage

Ceiling Height (First Level) 9'-8" (3.02 m)

Ceiling Height (Second Level) 9'-2" (2.77 m)

### Villa S04

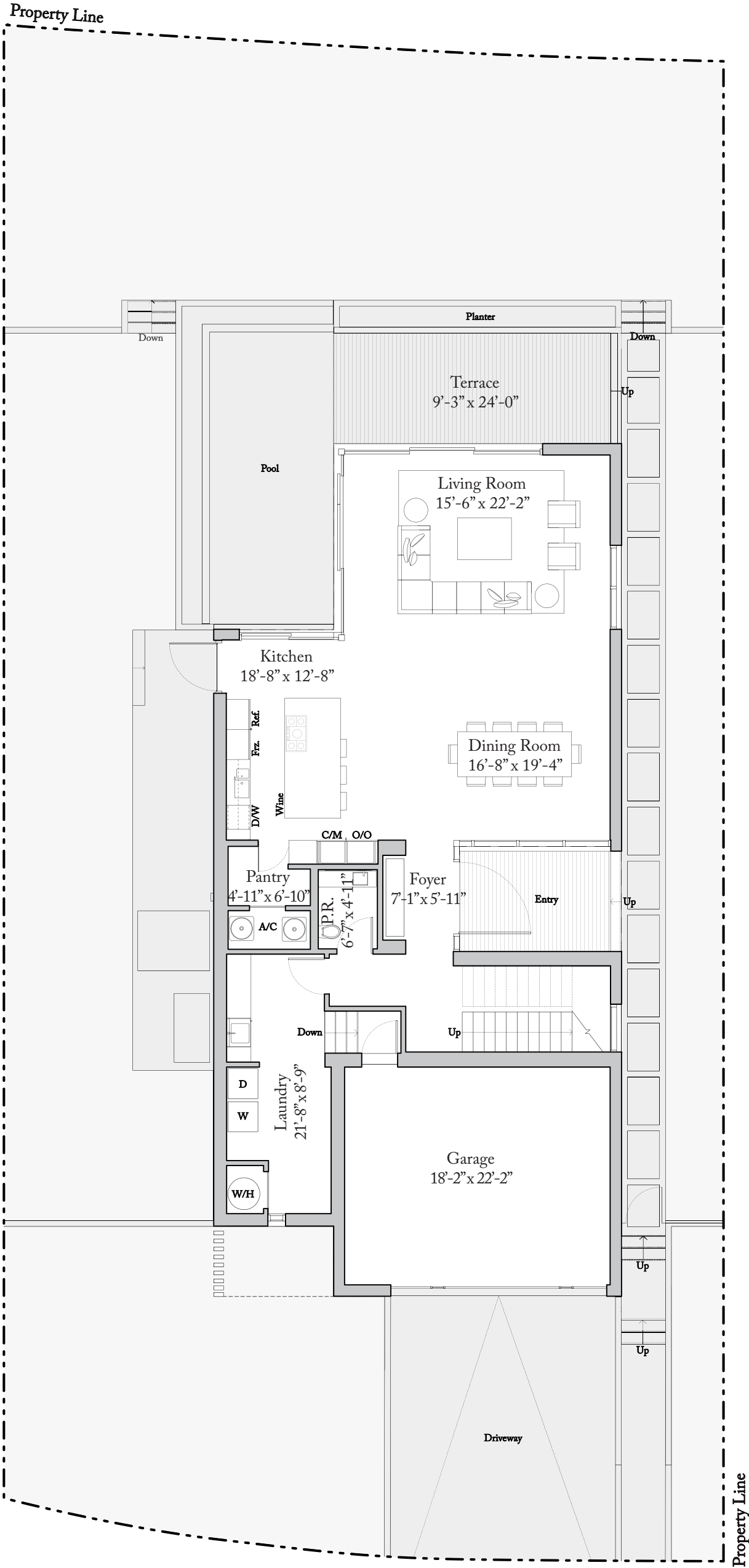
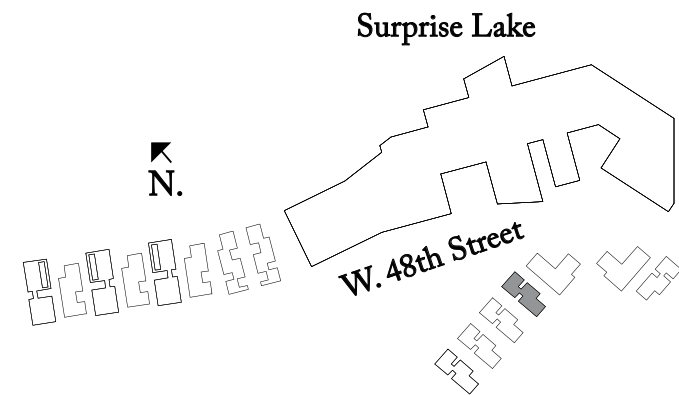
Enclosed Area: 3,648 Sq. Ft. (339 sq. m)

Terrace: 767 Sq. Ft. (71 sq. m)

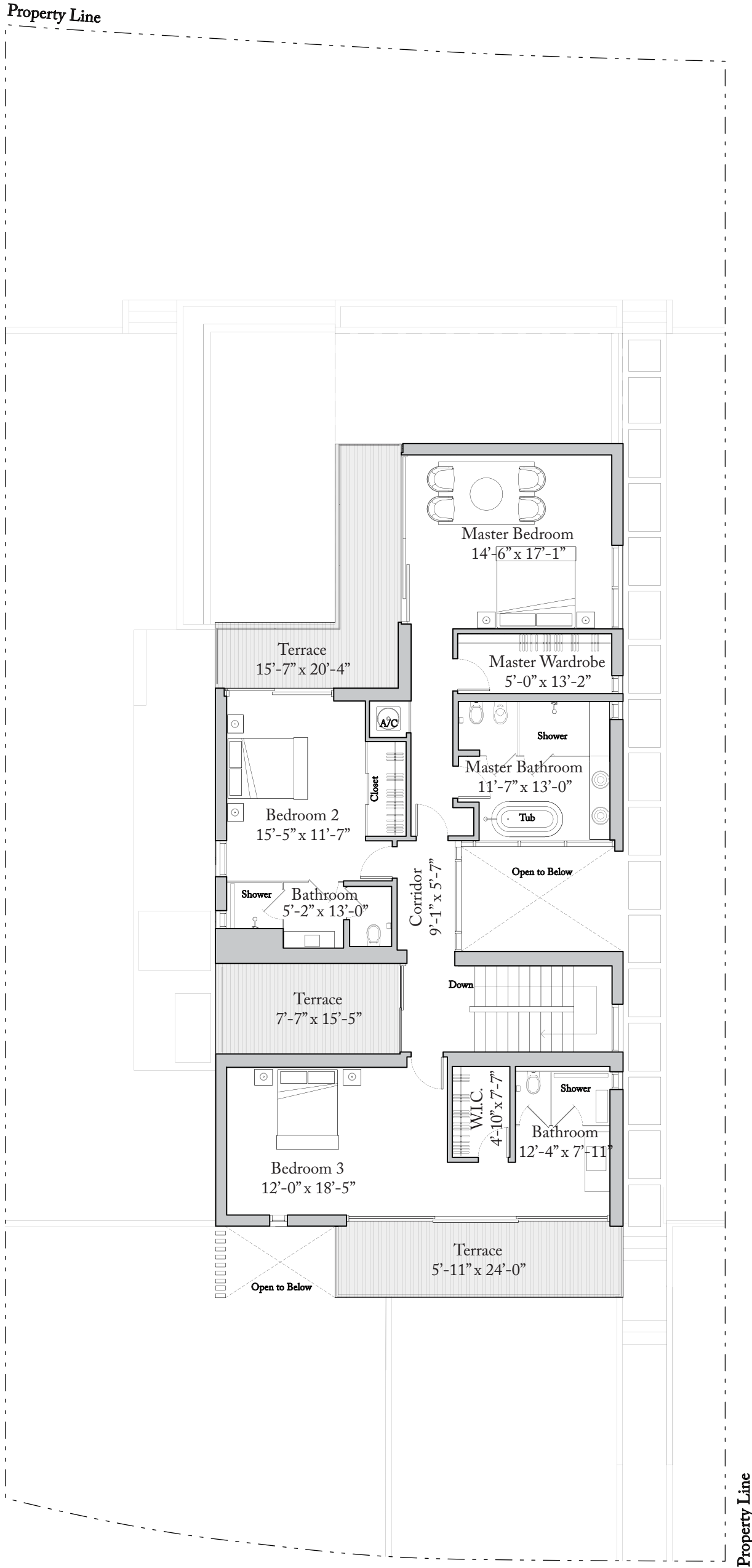
Total Area: 4,415 Sq. Ft. (410 sq. m)

### Lot Size

Villa S04: 7,499 Sq. Ft. (697 sq. m)



First Level




Second Level

Exclusive Sales Agent: Douglas Elliman Development Marketing. The Ritz-Carlton Residences, Miami Beach are not owned, developed or sold by The Ritz-Carlton Hotel Company, L.L.C. 4701 North Meridian LLC uses The Ritz-Carlton marks under a license from The Ritz-Carlton Hotel Company, L.L.C.

ORAL REPRESENTATIONS cannot be relied upon as correctly stating the representations of the developer. For correct representations, reference should be made to the documents required by section 718.503, Florida statutes, to be furnished by a developer to a buyer or lessee.

This offering is made only by the prospectus for the condominium and no statement should be relied upon if not made in the prospectus. Prices, plans and specifications are subject to change without notice. All depictions of appliances, counters, soffits, floor coverings and other matters of detail, including, without limitation, items of finish, furnishings and decoration, are conceptual only and are not necessarily included in each Unit. Stated dimensions are measured to the exterior boundaries of the exterior walls and the centerline of interior demising walls and in fact vary from the dimensions that would be determined by using the description and definition of the "Unit" set forth in the Declaration (which generally only includes the interior airspace between the perimeter walls and excludes interior structural components). For the precise Unit boundaries, please refer to the Declaration. Note that measurements of rooms set forth on this floor plan are generally taken at the greatest points of each given room (as if the room were a perfect rectangle), without regard for any cutouts. Accordingly, the area of the actual room will typically be smaller than the product obtained by multiplying the stated length times width. All dimensions and ceiling heights are approximate and may vary with actual construction, and all floor plans and development plans are subject to change. Additionally, ceiling height measurements exclude those areas where any soffits, moldings, drop and/or suspended ceilings and/or light fixtures may be installed. As such, the referenced ceiling height may not represent actual ceiling clearance. The seller reserves the absolute right, in its sole judgment and discretion, to substitute appliances, materials, fixtures, and equipment of equal or greater quality or value for those specified. Additionally, for New York offers, the complete offering terms are available in an offering plan available from Sponsor. CD16-0120.





THE RITZ - CARLTON  
RESIDENCES

MIAMI BEACH

Villa D2

3 Bedrooms | 3.5 Bathrooms | Garage

Ceiling Height (First Level) 9'-8" (2.95 m)

Ceiling Height (Second Level) 9'-2" (2.80 m)

Villa S03

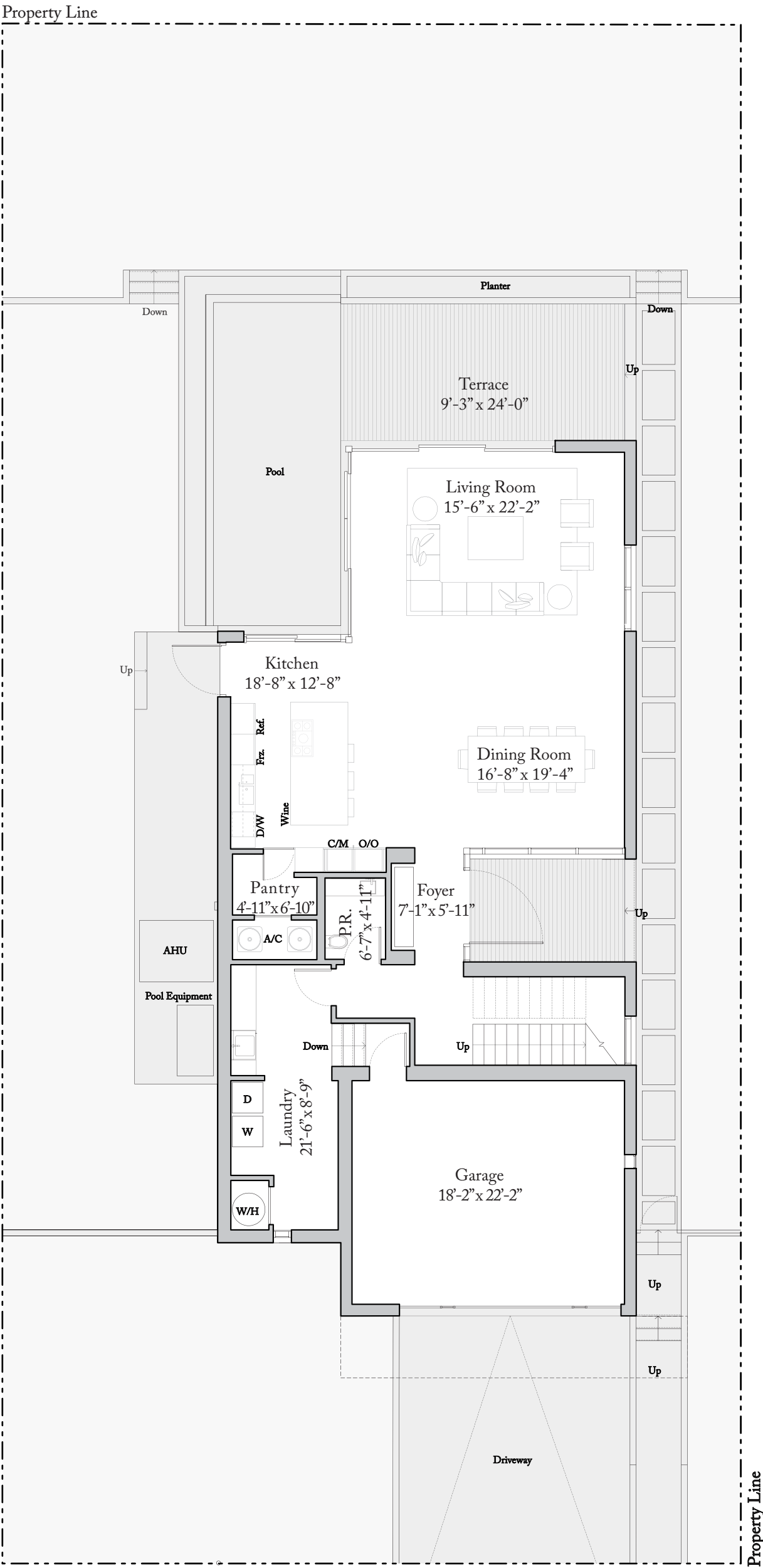
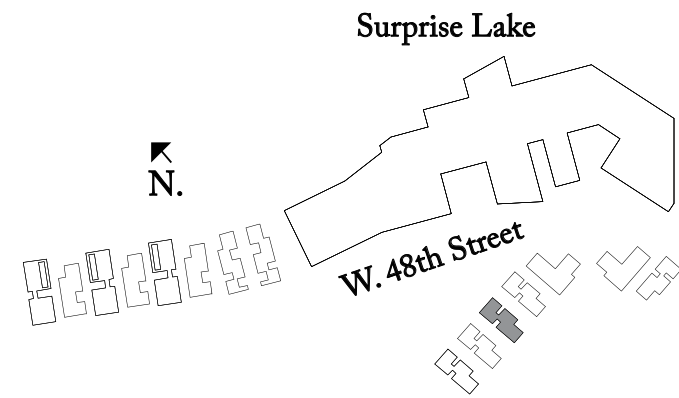
Enclosed Area: 3,639 Sq. Ft. (338 sq. m)

Terrace: 818 Sq. Ft. (76 sq. m)

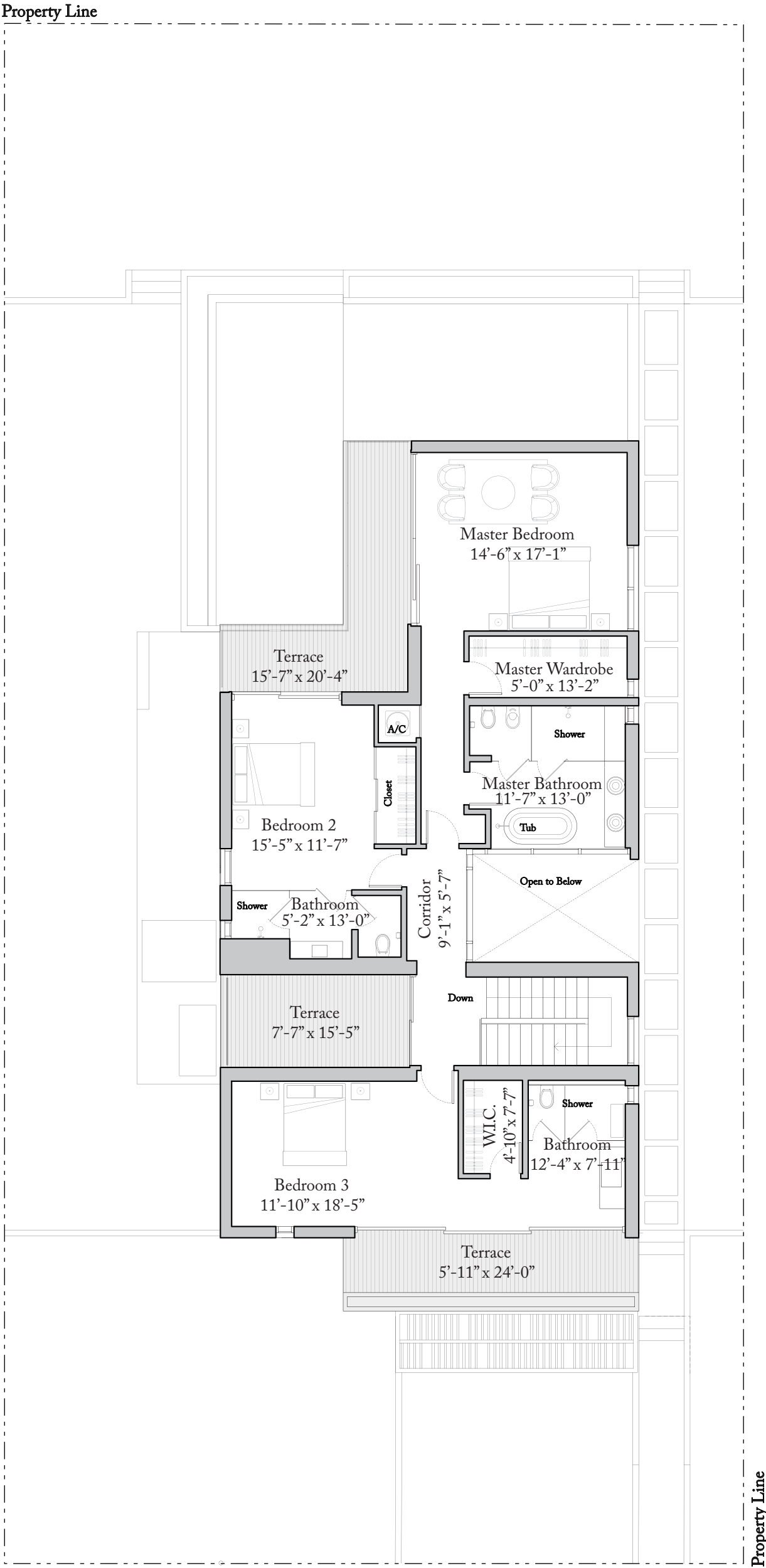
Total Area: 4,457 Sq. Ft. (414 sq. m)

Lot Size

Villa S03: 7,496 Sq. Ft. (696 sq. m)



First Level



Second Level

Exclusive Sales Agent: Douglas Elliman Development Marketing. The Ritz-Carlton Residences, Miami Beach are not owned, developed or sold by The Ritz-Carlton Hotel Company, L.L.C. 4701 North Meridian LLC uses The Ritz-Carlton marks under a license from The Ritz-Carlton Hotel Company, L.L.C.

ORAL REPRESENTATIONS cannot be relied upon as correctly stating the representations of the developer. For correct representations, reference should be made to the documents required by section 718.503, Florida statutes, to be furnished by a developer to a buyer or lessee.

This offering is made only by the prospectus for the condominium and no statement should be relied upon if not made in the prospectus. Prices, plans and specifications are subject to change without notice. All depictions of appliances, counters, soffits, floor coverings and other matters of detail, including, without limitation, items of finish, furnishings and decoration, are conceptual only and are not necessarily included in each Unit. Stated dimensions are measured to the exterior boundaries of the exterior walls and the centerline of interior demising walls and in fact vary from the dimensions that would be determined by using the description and definition of the "Unit" set forth in the Declaration (which generally only includes the interior airspace between the perimeter walls and excludes interior structural components). For the precise Unit boundaries, please refer to the Declaration. Note that measurements of rooms set forth on this floor plan are generally taken at the greatest points of each given room (as if the room were a perfect rectangle), without regard for any cutouts. Accordingly, the area of the actual room will typically be smaller than the product obtained by multiplying the stated length times width. All dimensions and ceiling heights are approximate and may vary with actual construction, and all floor plans and development plans are subject to change. Additionally, ceiling height measurements exclude those areas where any soffits, moldings, drop and/or suspended ceilings and/or light fixtures may be installed. As such, the referenced ceiling height may not represent actual ceiling clearance. The seller reserves the absolute right, in its sole judgment and discretion, to substitute appliances, materials, fixtures, and equipment of equal or great quality or value for those specified. Additionally, for New York offers, the complete offering terms are available in an offering plan available from Sponsor. CD16-0120.





# THE RITZ-CARLTON RESIDENCES

MIAMI BEACH

## Villa D3

3 Bedrooms | 3.5 Bathrooms | Garage

Ceiling Height (First Level) 9'-8" (2.95 m)

Ceiling Height (Second Level) 9'-2" (2.80 m)

Villa S02

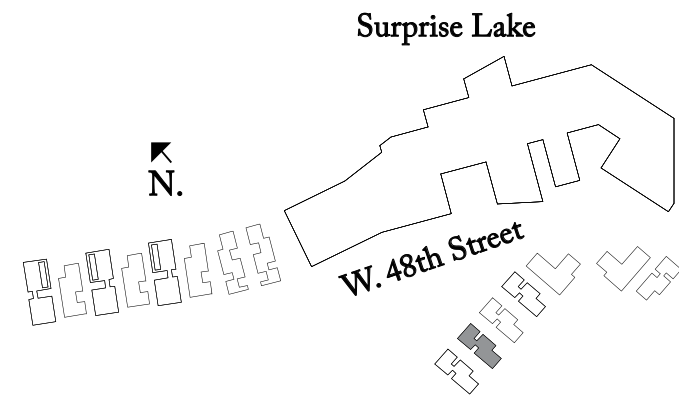
Enclosed Area: 3,704 Sq. Ft. (344 sq. m)

Terrace: 862 Sq. Ft. (80 sq. m)

Total Area: 4,566 Sq. Ft. (424 sq. m)

Lot Size

Villa S02: 8,693 Sq. Ft. (808 sq. m)



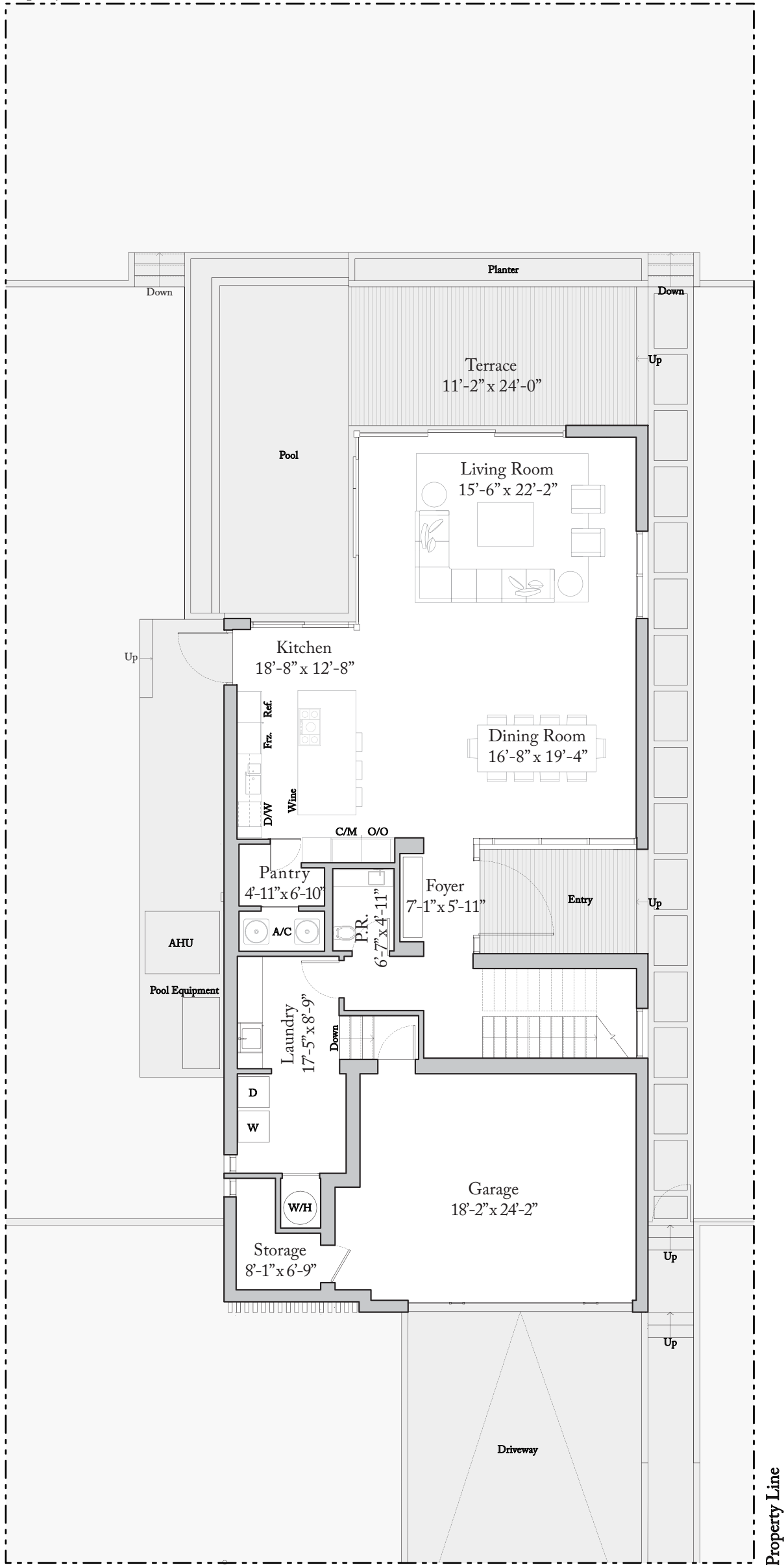
Exclusive Sales Agent: Douglas Elliman Development Marketing. The Ritz-Carlton Residences, Miami Beach are not owned, developed or sold by The Ritz-Carlton Hotel Company, L.L.C. 4701 North Meridian LLC uses The Ritz-Carlton marks under a license from The Ritz-Carlton Hotel Company, L.L.C.

ORAL REPRESENTATIONS cannot be relied upon as correctly stating the representations of the developer. For correct representations, reference should be made to the documents required by section 718.503, Florida statutes, to be furnished by a developer to a buyer or lessee.

This offering is made only by the prospectus for the condominium and no statement should be relied upon if not made in the prospectus. Prices, plans and specifications are subject to change without notice. All depictions of appliances, counters, soffits, floor coverings and other matters of detail, including, without limitation, items of finish, furnishings and decoration, are conceptual only and are not necessarily included in each Unit. Stated dimensions are measured to the exterior boundaries of the exterior walls and the centerline of interior demising walls and in fact vary from the dimensions that would be determined by using the description and definition of the "Unit" set forth in the Declaration (which generally only includes the interior airspace between the perimeter walls and excludes interior structural components). For the precise Unit boundaries, please refer to the Declaration. Note that measurements of rooms set forth on this floor plan are generally taken at the greatest points of each given room (as if the room were a perfect rectangle), without regard for any cutouts. Accordingly, the area of the actual room will typically be smaller than the product obtained by multiplying the stated length times width. All dimensions and ceiling heights are approximate and may vary with actual construction, and all floor plans and development plans are subject to change. Additionally, ceiling height measurements exclude those areas where any soffits, moldings, drop and/or suspended ceilings and/or light fixtures may be installed. As such, the referenced ceiling height may not represent actual ceiling clearance. The seller reserves the absolute right, in its sole judgment and discretion, to substitute appliances, materials, fixtures, and equipment of equal or great quality or value for those specified. Additionally, for New York offers, the complete offering terms are available in an offering plan available from Sponsor. CD16-0120.

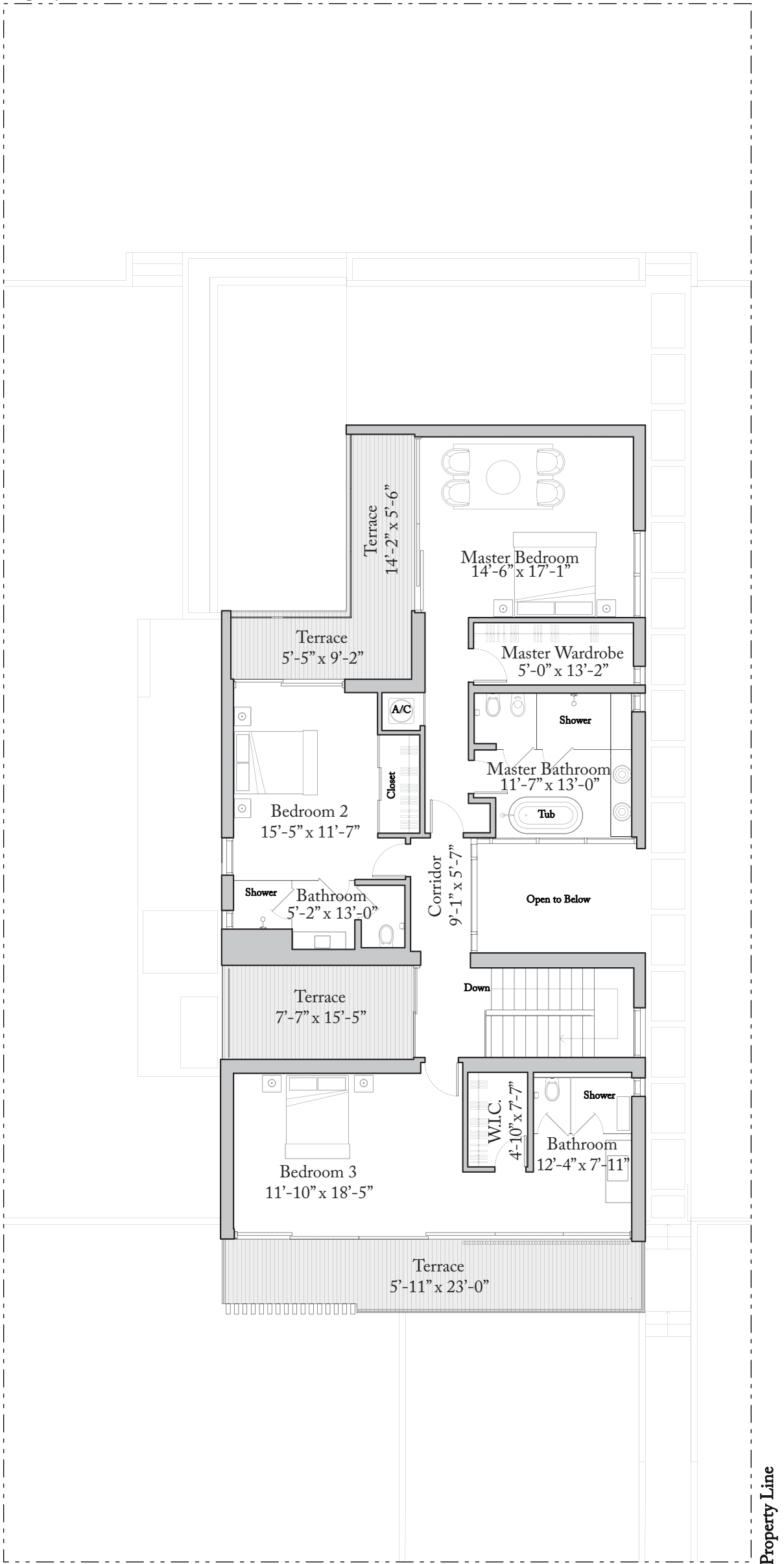


Property Line



First Level

Property Line



Second Level



THE RITZ-CARLTON  
RESIDENCES

MIAMI BEACH

Villa D4

3 Bedrooms | 3.5 Bathrooms | Garage

Ceiling Height (First Level) 9'-8" (2.95 m)

Ceiling Height (Second Level) 9'-2" (2.80 m)

Villa S01

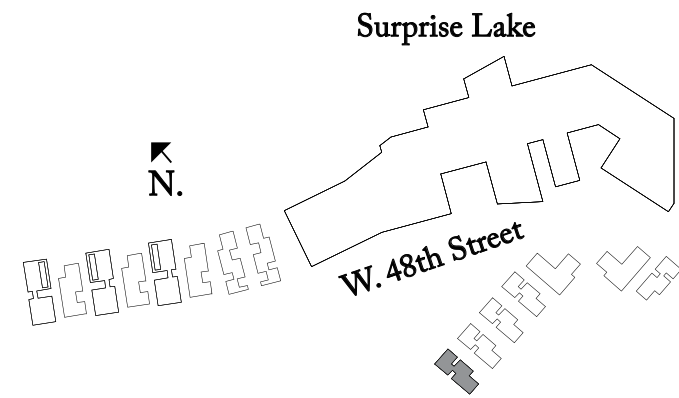
Enclosed Area: 3,713 Sq. Ft. (345 sq. m)

Terrace: 863 Sq. Ft. (80 sq. m)

Total Area: 4,576 Sq. Ft. (425 sq. m)

Lot Size

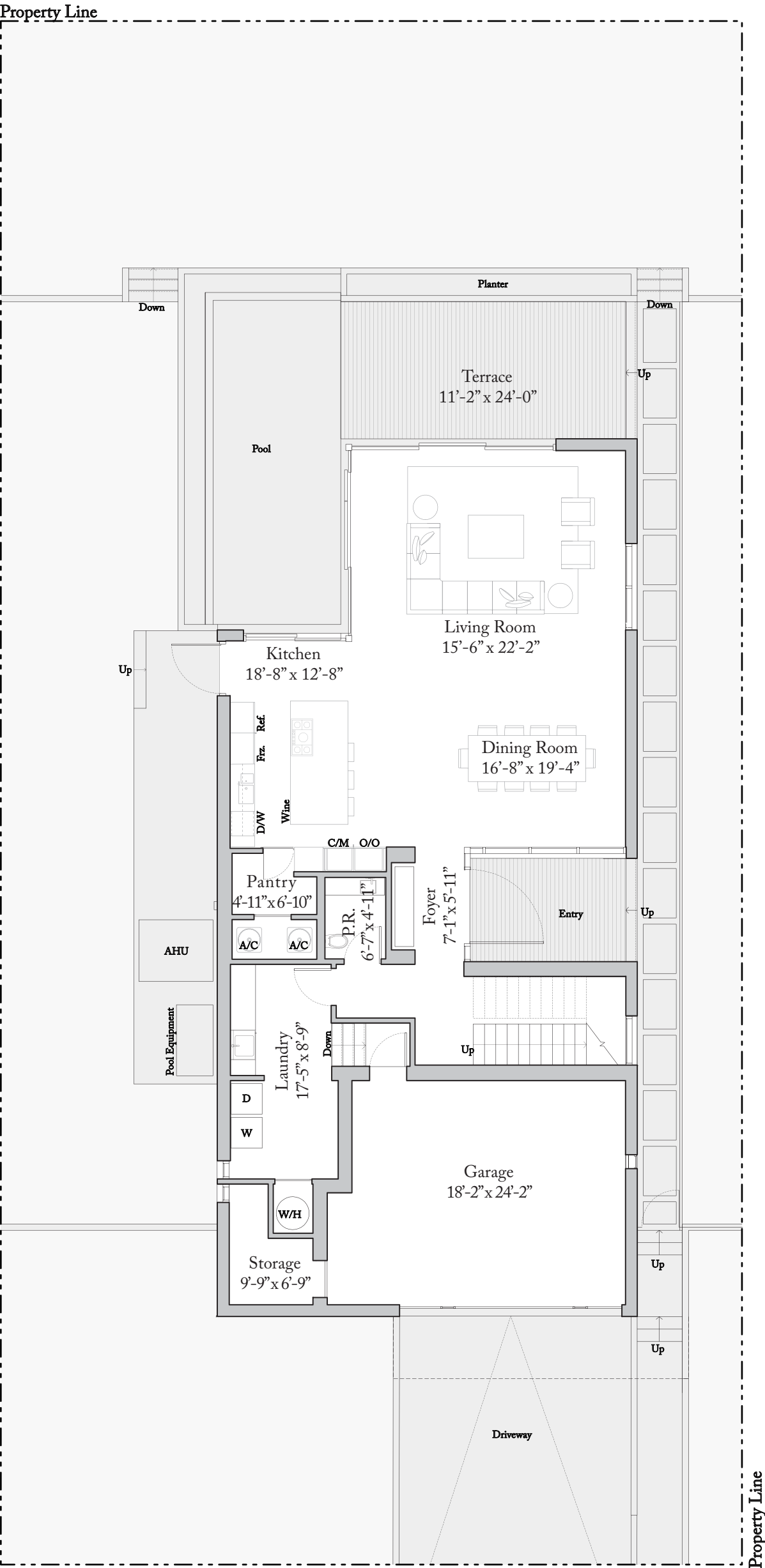
Villa S01: 7,505 Sq. Ft. (697 sq. m)



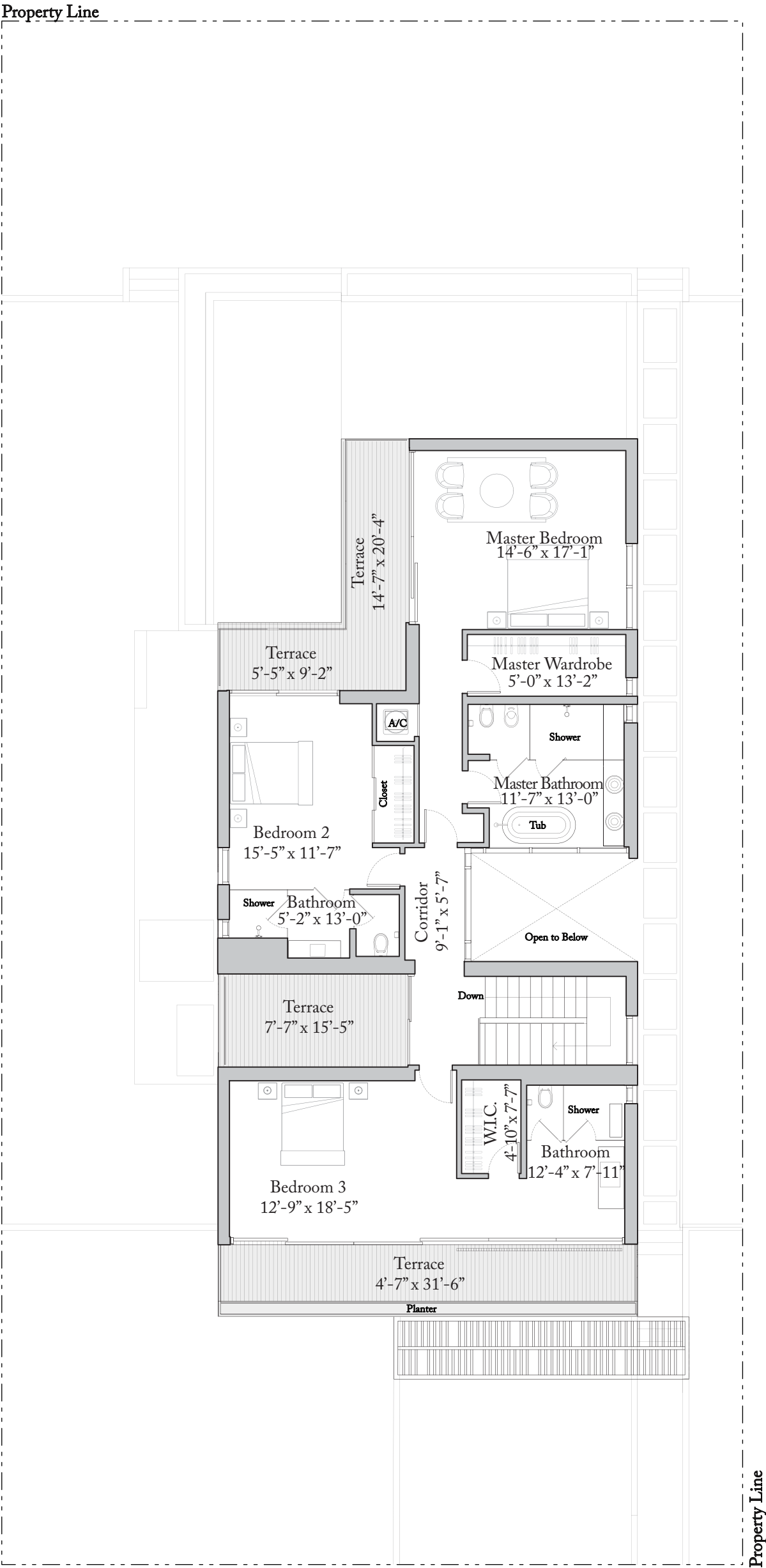
Exclusive Sales Agent: Douglas Elliman Development Marketing. The Ritz-Carlton Residences, Miami Beach are not owned, developed or sold by The Ritz-Carlton Hotel Company, L.L.C. 4701 North Meridian LLC uses The Ritz-Carlton marks under a license from The Ritz-Carlton Hotel Company, L.L.C.

ORAL REPRESENTATIONS cannot be relied upon as correctly stating the representations of the developer. For correct representations, reference should be made to the documents required by section 718.503, Florida statutes, to be furnished by a developer to a buyer or lessee.

This offering is made only by the prospectus for the condominium and no statement should be relied upon if not made in the prospectus. Prices, plans and specifications are subject to change without notice. All depictions of appliances, counters, soffits, floor coverings and other matters of detail, including, without limitation, items of finish, furnishings and decoration, are conceptual only and are not necessarily included in each Unit. Stated dimensions are measured to the exterior boundaries of the exterior walls and the centerline of interior demising walls and in fact vary from the dimensions that would be determined by using the description and definition of the "Unit" set forth in the Declaration (which generally only includes the interior airspace between the perimeter walls and excludes interior structural components). For the precise Unit boundaries, please refer to the Declaration. Note that measurements of rooms set forth on this floor plan are generally taken at the greatest points of each given room (as if the room were a perfect rectangle), without regard for any cutouts. Accordingly, the area of the actual room will typically be smaller than the product obtained by multiplying the stated length times width. All dimensions and ceiling heights are approximate and may vary with actual construction, and all floor plans and development plans are subject to change. Additionally, ceiling height measurements exclude those areas where any soffits, moldings, drop and/or suspended ceilings and/or light fixtures may be installed. As such, the referenced ceiling height may not represent actual ceiling clearance. The seller reserves the absolute right, in its sole judgment and discretion, to substitute appliances, materials, fixtures, and equipment of equal or great quality or value for those specified. Additionally, for New York offerors, the complete offering terms are available in an offering plan available from Sponsor. CD16-0120.



First Level



Second Level





THE RITZ-CARLTON  
RESIDENCES

MIAMI BEACH

Villa E

3 Bedrooms | 3.5 Bathrooms | Family Room | Garage

Villa S05, S06

Ceiling Height (First Level) 9'-6" (2.89 m)

Ceiling Height (Second Level) 9'-0" (2.79 m)

Villa S05, S06

Living Area: 3,706 Sq. Ft. (344 sq. m)

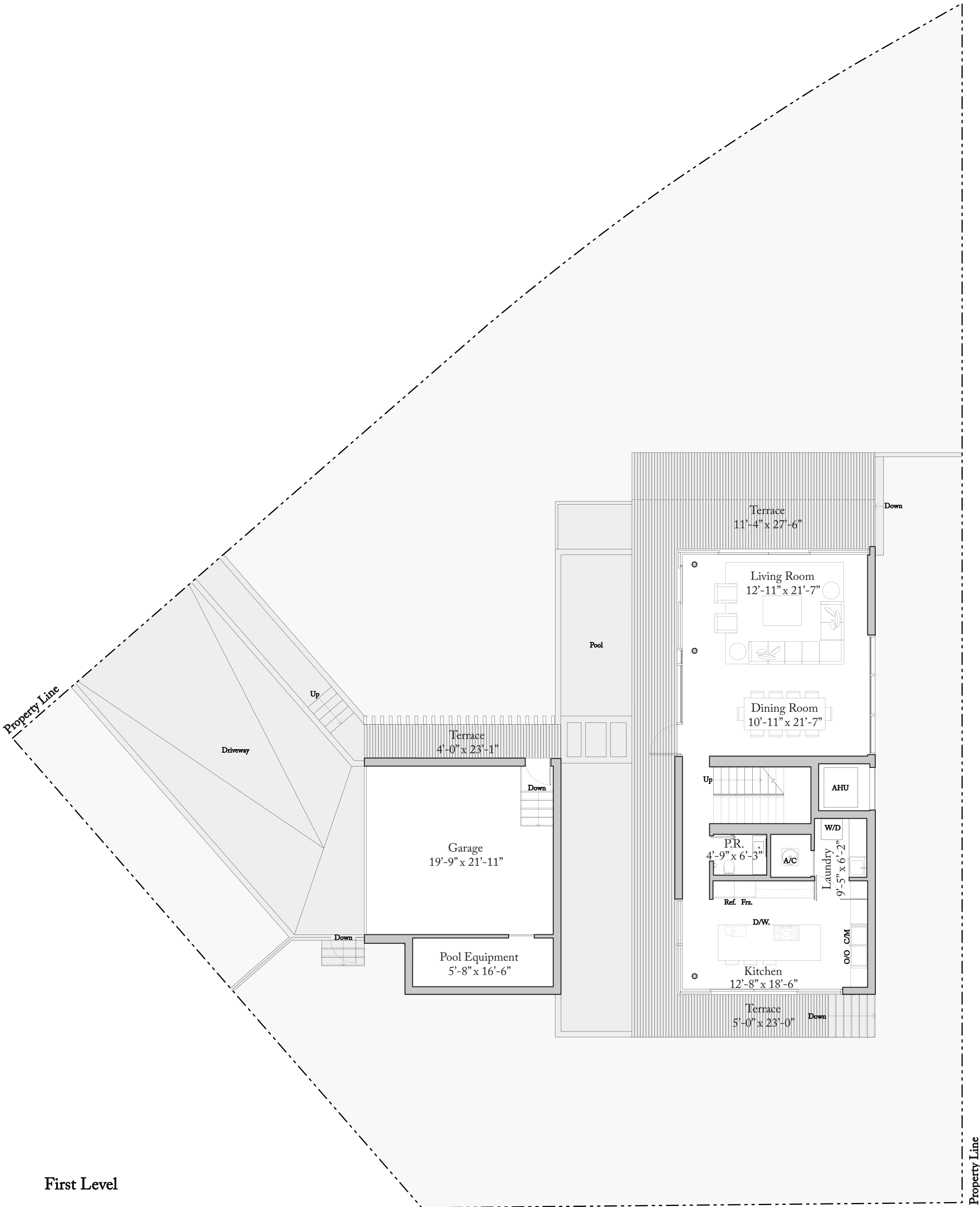
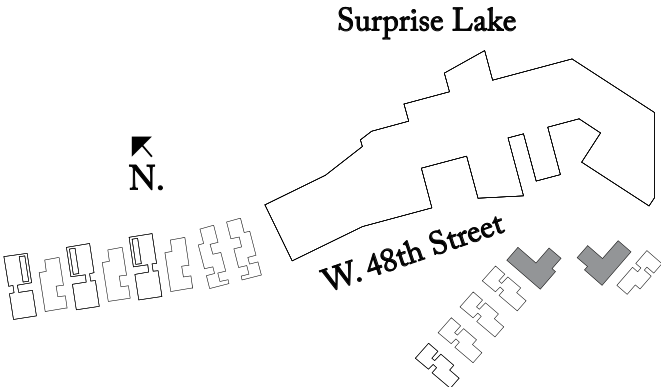
Terrace: 1,494 Sq. Ft. (139 sq. m)

Total Area: 5,200 Sq. Ft. (483 sq. m)

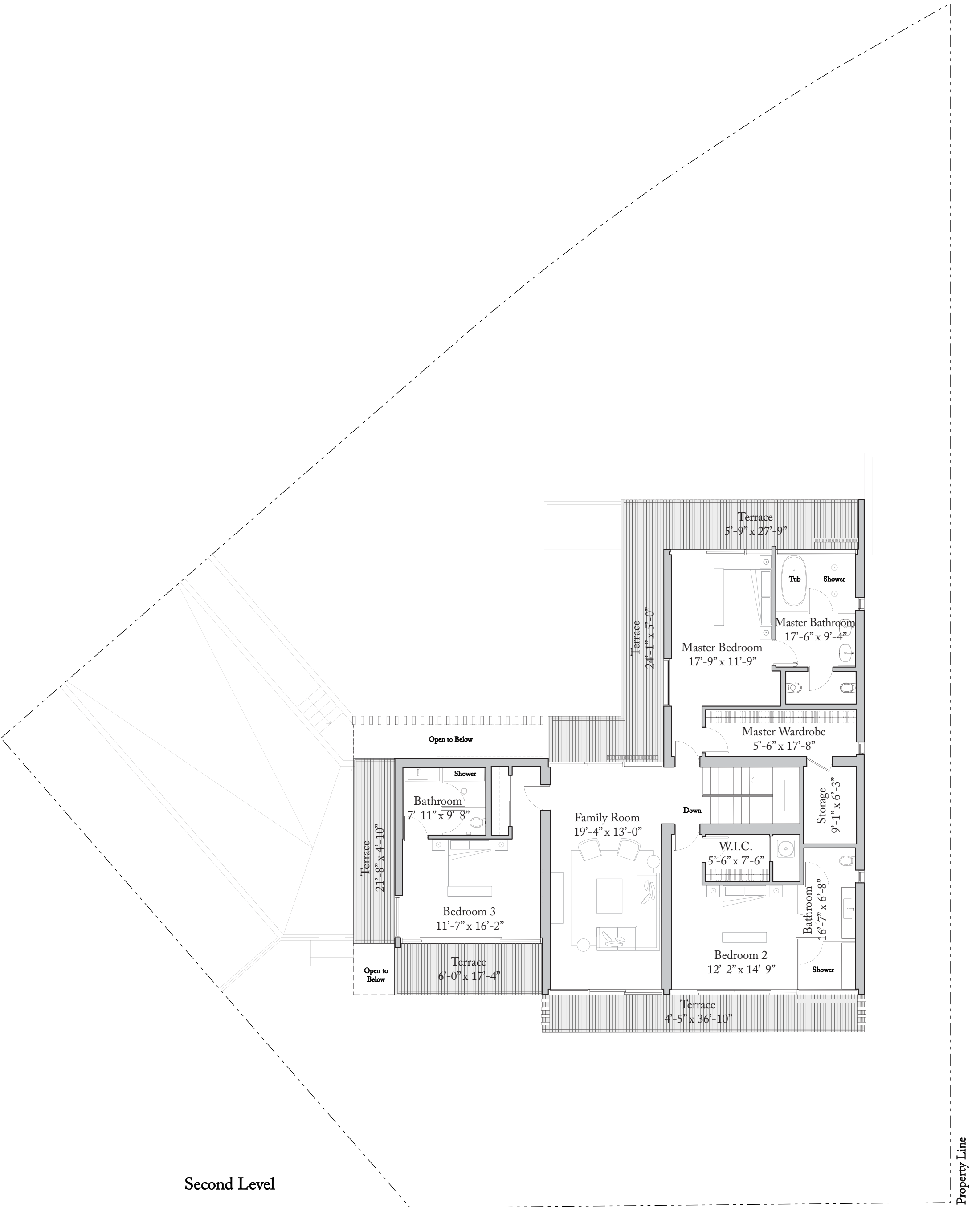
Lot Size

Villa S05: 9,808 Sq. Ft. (911 sq. m)

Villa S06: 9,933 Sq. Ft. (923 sq. m)



First Level



Second Level



Exclusive Sales Agent: Douglas Elliman Development Marketing. The Ritz-Carlton Residences, Miami Beach are not owned, developed or sold by The Ritz-Carlton Hotel Company, L.L.C. 4701 North Meridian LLC uses The Ritz-Carlton marks under a license from The Ritz-Carlton Hotel Company, L.L.C. ORAL REPRESENTATIONS cannot be relied upon as correctly stating the representations of the developer. For correct representations, reference should be made to the documents required by section 718.503, Florida statutes, to be furnished by a developer to a buyer or lessee. This offering is made only by the prospectus for the condominium and no statement should be relied upon if not made in the prospectus. Prices, plans and specifications are subject to change without notice. All depictions of appliances, counters, soffits, floor coverings and other matters of detail, including, without limitation, items of finish, furnishings and decoration, are conceptual only and are not necessarily included in each Unit. Stated dimensions are measured to the exterior boundaries of the exterior walls and the centerline of interior demising walls and in fact vary from the dimensions that would be determined by using the description and definition of the "Unit" set forth in the Declaration (which generally only includes the interior airspace between the perimeter walls and excludes interior structural components). For the precise Unit boundaries, please refer to the Declaration. Note that measurements of rooms set forth on this floor plan are generally taken at the greatest points of each given room (as if the room were a perfect rectangle), without regard for any cutouts. Accordingly, the area of the actual room will typically be smaller than the product obtained by multiplying the stated length times width. All dimensions and ceiling heights are approximate and may vary with actual construction, and all floor plans and development plans are subject to change. Additionally, ceiling height measurements exclude those areas where any soffits, moldings, drop and/or suspended ceilings and/or light fixtures may be installed. As such, the referenced ceiling height may not represent actual ceiling clearance. The seller reserves the absolute right, in its sole judgment and discretion, to substitute appliances, materials, fixtures, and equipment of equal or greater quality or value for those specified. Additionally, for New York offerors, the complete offering terms are available in an offering plan available from Sponsor. CD16-0120.



# THE RITZ-CARLTON RESIDENCES

MIAMI BEACH

## Villa Z

3 Bedrooms | 3.5 Bathrooms | Garage

Ceiling Height (First Level) 10'-2" (3.00 m)

Ceiling Height (Second Level) 9'-2" (2.80 m)

Villa S07

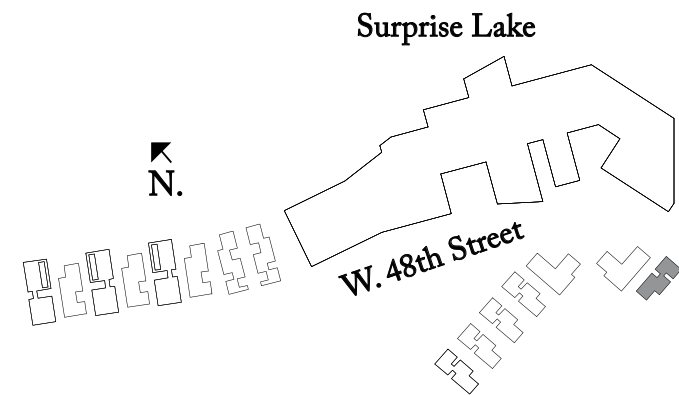
Enclosed Area: 4,159 Sq. Ft. (386 sq. m)

Terrace: 1,002 Sq. Ft. (93 sq. m)

Total Area: 5,161 Sq. Ft. (479 sq. m)

Lot Size

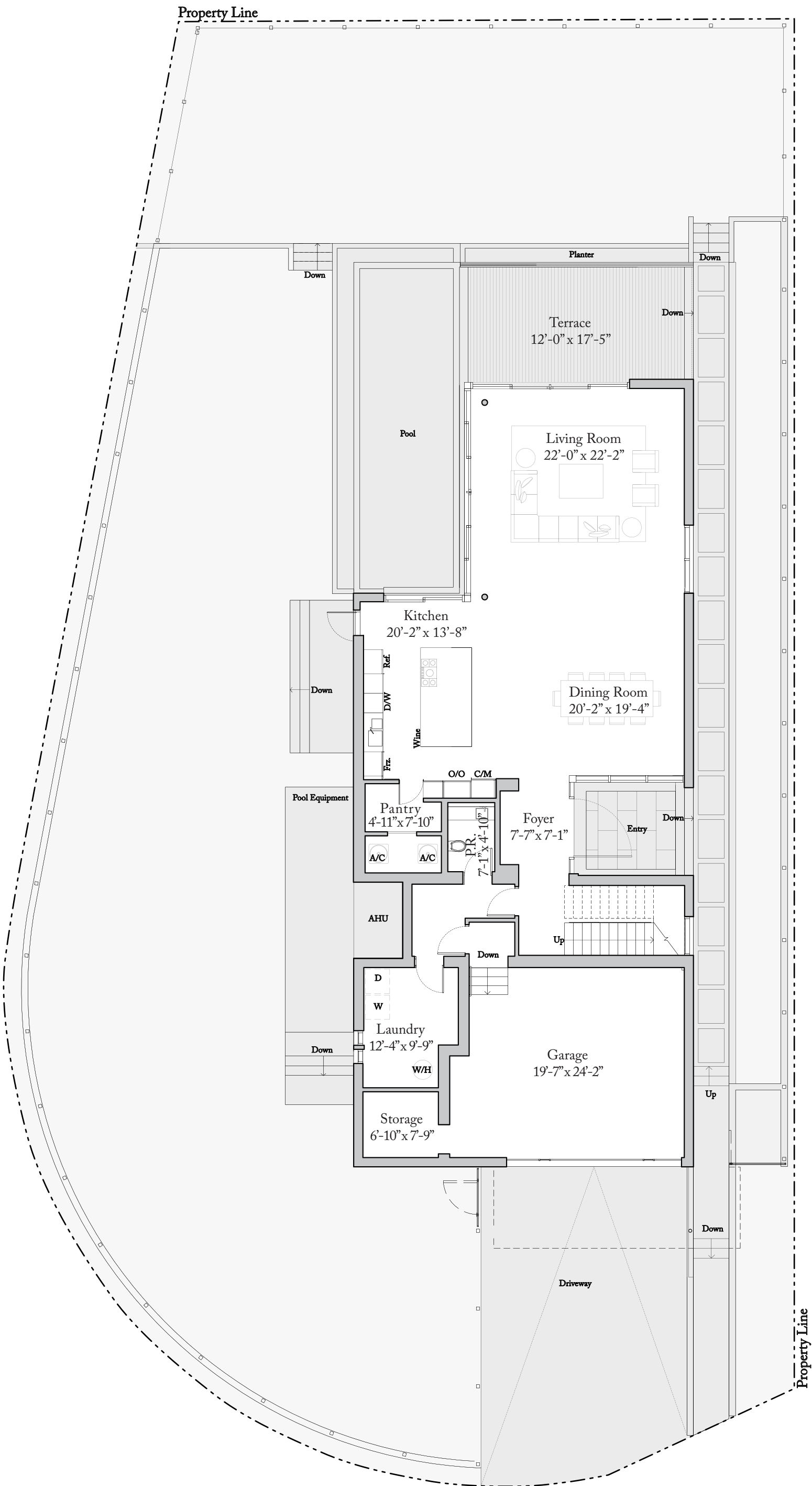
Villa S07: 10,596 Sq. Ft. (923 sq. m)



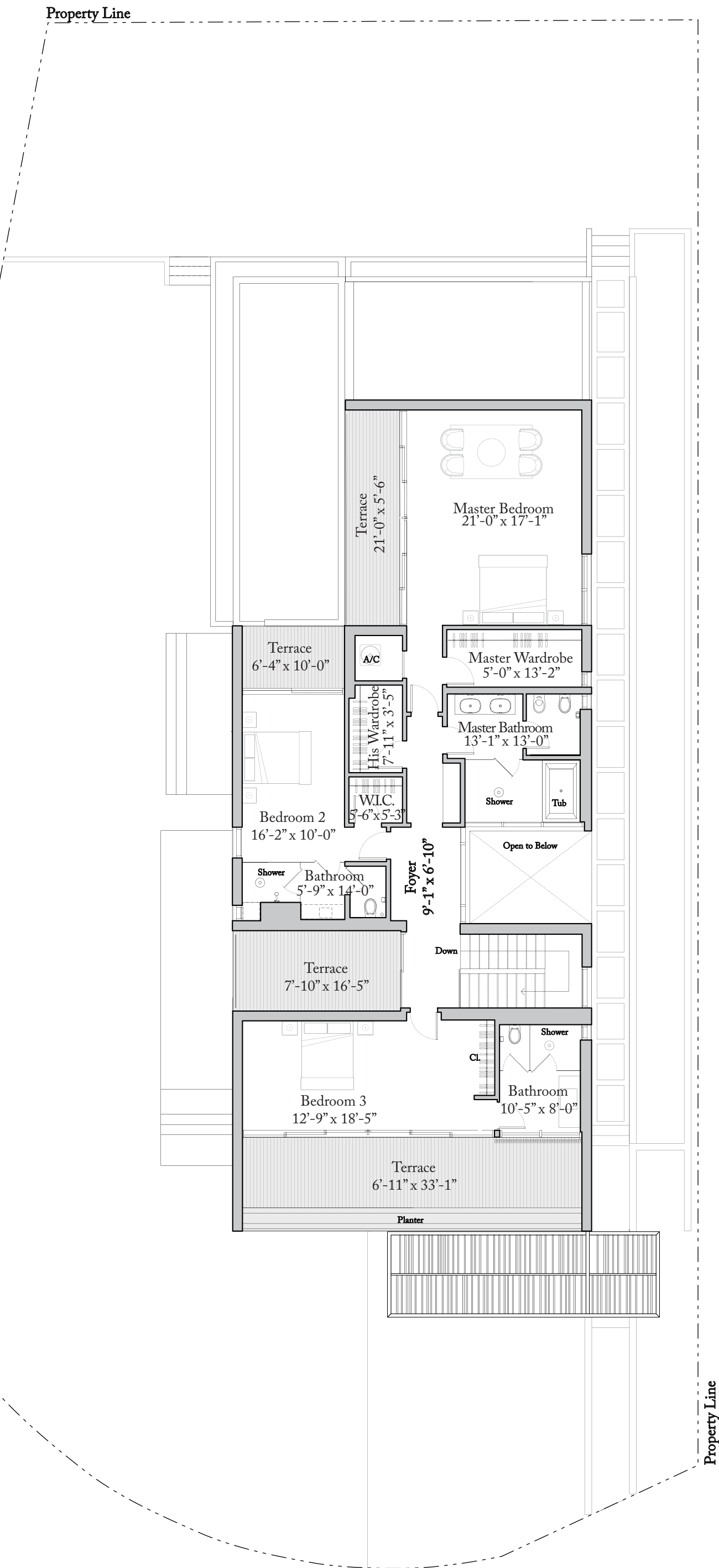
Exclusive Sales Agent: Douglas Elliman Development Marketing. The Ritz-Carlton Residences, Miami Beach are not owned, developed or sold by The Ritz-Carlton Hotel Company, L.L.C. 4701 North Meridian LLC uses The Ritz-Carlton marks under a license from The Ritz-Carlton Hotel Company, L.L.C.

ORAL REPRESENTATIONS cannot be relied upon as correctly stating the representations of the developer. For correct representations, reference should be made to the documents required by section 718.503, Florida statutes, to be furnished by a developer to a buyer or lessee.

This offering is made only by the prospectus for the condominium and no statement should be relied upon if not made in the prospectus. Prices, plans and specifications are subject to change without notice. All depictions of appliances, counters, soffits, floor coverings and other matters of detail, including, without limitation, items of finish, furnishings and decoration, are conceptual only and are not necessarily included in each Unit. Stated dimensions are measured to the exterior boundaries of the exterior walls and the centerline of interior demising walls and in fact vary from the dimensions that would be determined by using the description and definition of the "Unit" set forth in the Declaration (which generally only includes the interior airspace between the perimeter walls and excludes interior structural components). For the precise Unit boundaries, please refer to the Declaration. Note that measurements of rooms set forth on this floor plan are generally taken at the greatest points of each given room (as if the room were a perfect rectangle), without regard for any cutouts. Accordingly, the area of the actual room will typically be smaller than the product obtained by multiplying the stated length times width. All dimensions and ceiling heights are approximate and may vary with actual construction, and all floor plans and development plans are subject to change. Additionally, ceiling height measurements exclude those areas where any soffits, moldings, drop and/or suspended ceilings and/or light fixtures may be installed. As such, the referenced ceiling height may not represent actual ceiling clearance. The seller reserves the absolute right, in its sole judgment and discretion, to substitute appliances, materials, fixtures, and equipment of equal or great quality or value for those specified. Additionally, for New York offerings, the complete offering terms are available in an offering plan available from Sponsor. CD16-0120.



First Level



Second Level



# THE RITZ-CARLTON RESIDENCES

MIAMI BEACH

## Villa A

4 Bedrooms | 4.5 Bathrooms | Garage

Ceiling Height (First Level) 9'-11" (3.02 m)

Ceiling Height (Second Level) 9'-1" (2.77 m)

Villa N01, N03, N05

Enclosed Area: 4,734 Sq. Ft. (440 sq. m)

Terrace: 1,811 Sq. Ft. (168 sq. m)

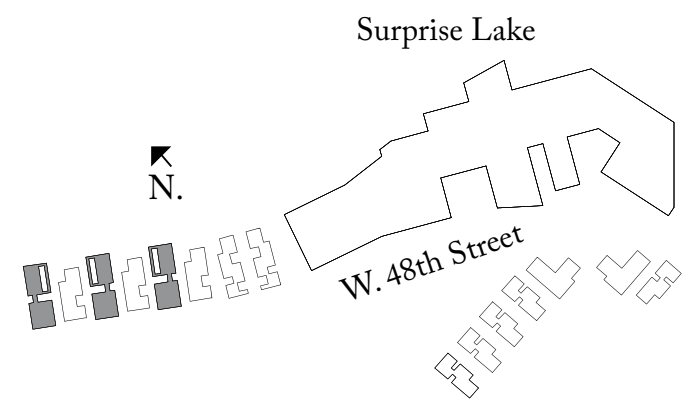
Total Area: 6,545 Sq. Ft. (608 sq. m)

Lot Size

Villa N01: 9,733 Sq. Ft. (908 sq. m)

Villa N03: 8,713 Sq. Ft. (809 sq. m)

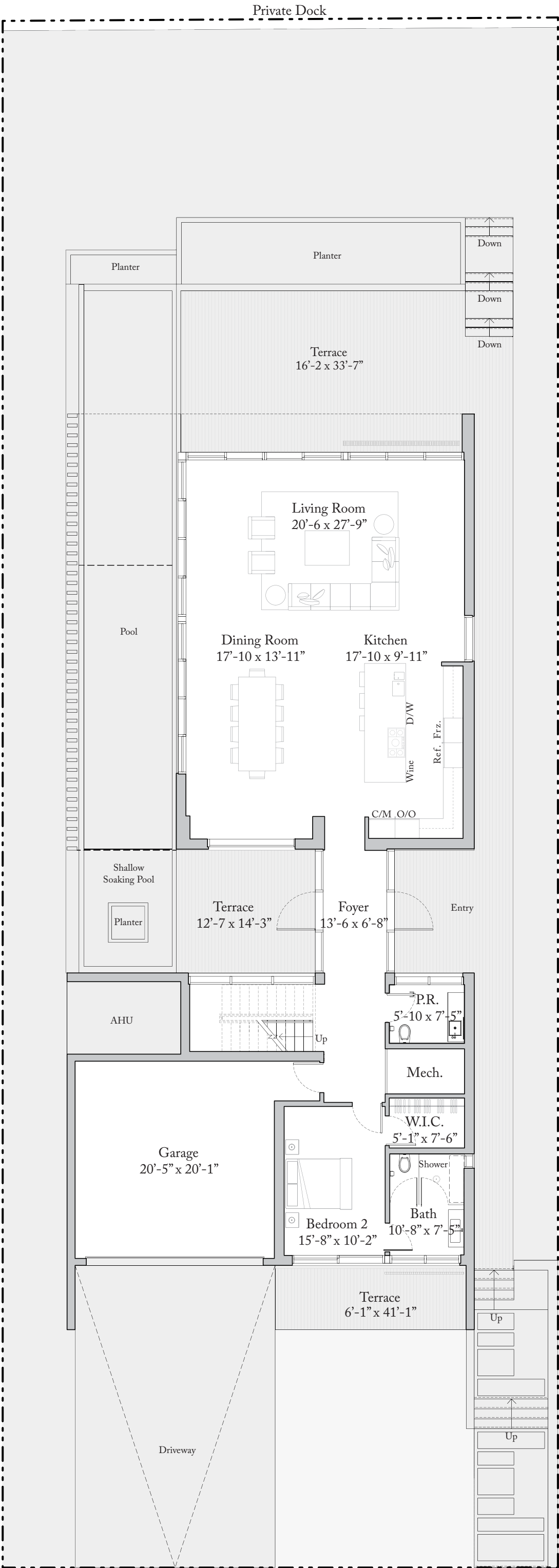
Villa N05: 8,753 Sq. Ft. (813 sq. m)



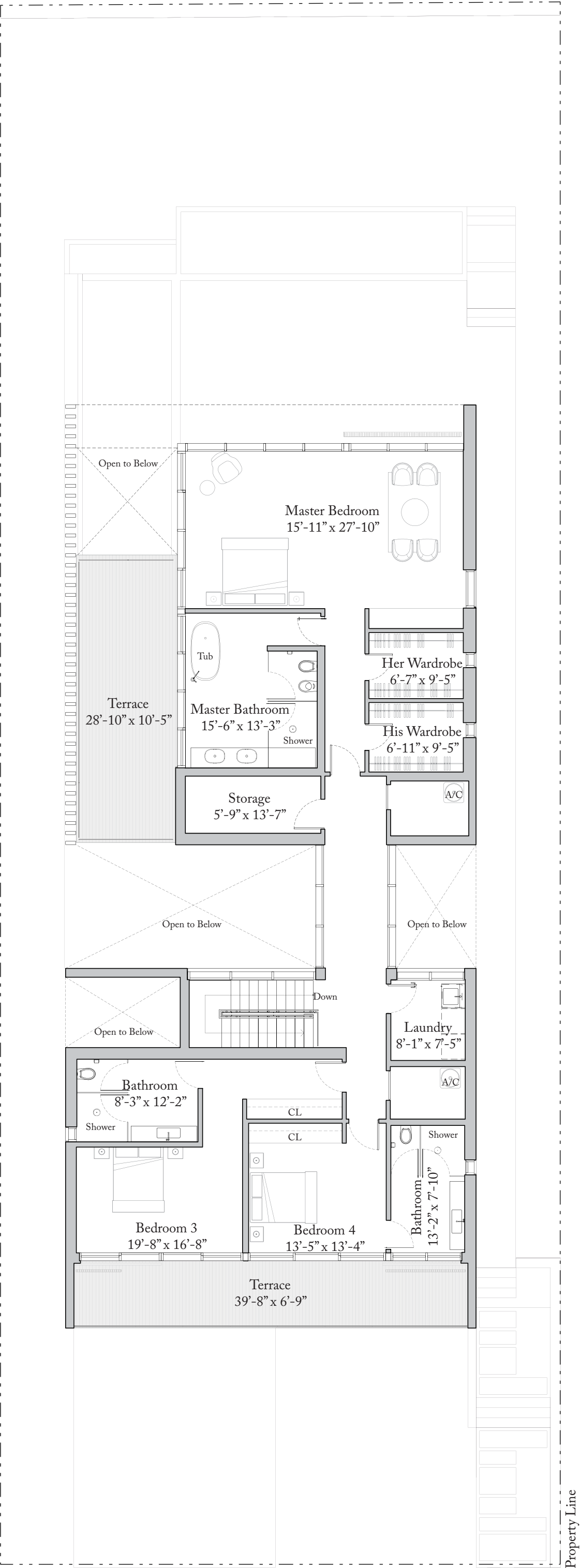
Exclusive Sales Agent: Douglas Elliman Development Marketing. The Ritz-Carlton Residences, Miami Beach are not owned, developed or sold by The Ritz-Carlton Hotel Company, L.L.C. 4701 North Meridian LLC uses The Ritz-Carlton marks under a license from The Ritz-Carlton Hotel Company, L.L.C.

ORAL REPRESENTATIONS cannot be relied upon as correctly stating the representations of the developer. For correct representations, reference should be made to the documents required by section 718.503, Florida statutes, to be furnished by a developer to a buyer or lessee.

This offering is made only by the prospectus for the condominium and no statement should be relied upon if not made in the prospectus. Prices, plans and specifications are subject to change without notice. All depictions of appliances, counters, soffits, floor coverings and other matters of detail, including, without limitation, items of finish, furnishings and decoration, are conceptual only and are not necessarily included in each Unit. Stated dimensions are measured to the exterior boundaries of the exterior walls and the centerline of interior demising walls and in fact vary from the dimensions that would be determined by using the description and definition of the "Unit" set forth in the Declaration (which generally only includes the interior airspace between the perimeter walls and excludes interior structural components). For the precise Unit boundaries, please refer to the Declaration. Note that measurements of rooms set forth on this floor plan are generally taken at the greatest points of each given room (as if the room were a perfect rectangle), without regard for any cutouts. Accordingly, the area of the actual room will typically be smaller than the product obtained by multiplying the stated length times width. All dimensions and ceiling heights are approximate and may vary with actual construction, and all floor plans and development plans are subject to change. Additionally, ceiling height measurements exclude those areas where any soffits, moldings, drop and/or suspended ceilings and/or light fixtures may be installed. As such, the referenced ceiling height may not represent actual ceiling clearance. The seller reserves the absolute right, in its sole judgment and discretion, to substitute appliances, materials, fixtures, and equipment of equal or great quality or value for those specified. Additionally, for New York offerors, the complete offering terms are available in an offering plan available from Sponsor. CD16-0120.



First Level



Second Level





THE RITZ - CARLTON  
RESIDENCES

MIAMI BEACH

Villa B

4 Bedrooms | 5.5 Bathrooms  
Garage | Family Room

Ceiling Height (First Level) 9'-11" (3.02 m)

Ceiling Height (Second Level) 9'-1" (2.77 m)

Villa N02, N04, N06

Enclosed Area: 4,745 Sq. Ft. (441 sq. m)

Terrace: 1,652 Sq. Ft. (152 sq. m)

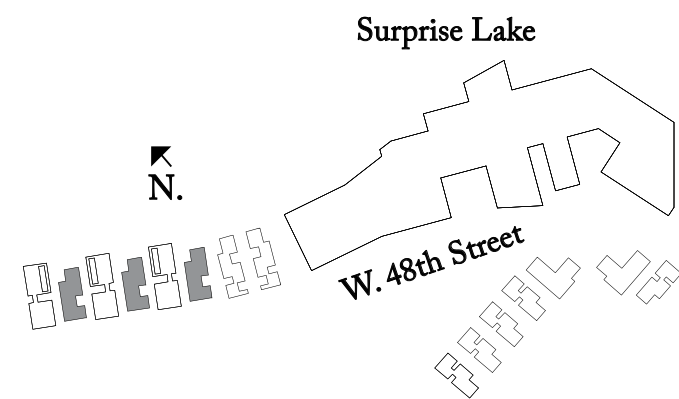
Total Area: 6,397 Sq. Ft. (594 sq. m)

Lot Size

Villa N02: 8,693 Sq. Ft. (808 sq. m)

Villa N04: 8,733 Sq. Ft. (811 sq. m)

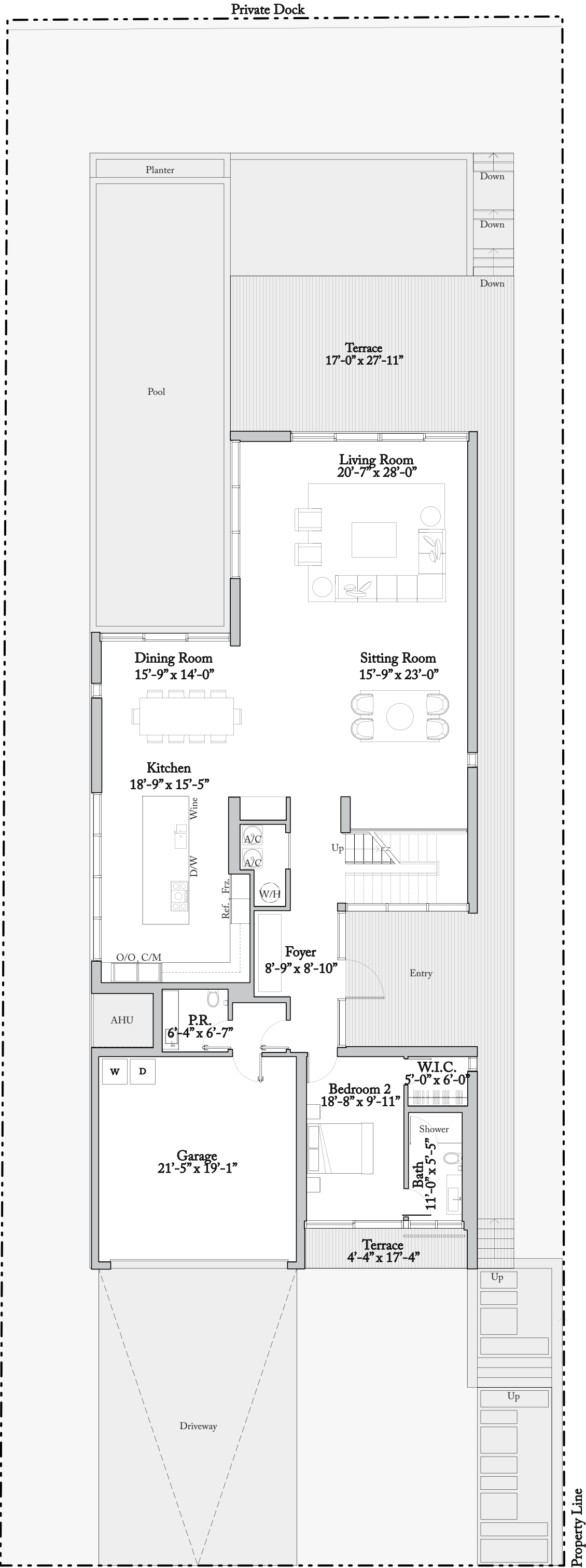
Villa N06: 9,005 Sq. Ft. (837 sq. m)



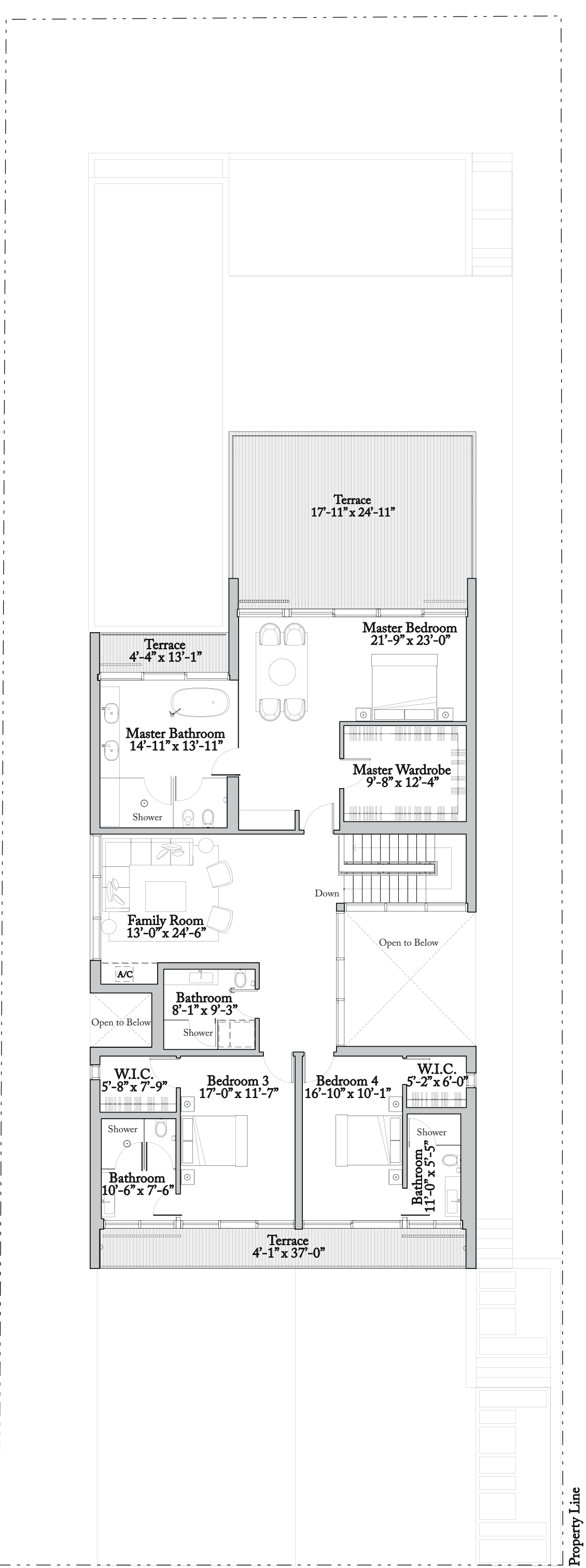
Exclusive Sales Agent: Douglas Elliman Development Marketing. The Ritz-Carlton Residences, Miami Beach are not owned, developed or sold by The Ritz-Carlton Hotel Company, L.L.C. 4701 North Meridian LLC uses The Ritz-Carlton marks under a license from The Ritz-Carlton Hotel Company, L.L.C.

ORAL REPRESENTATIONS cannot be relied upon as correctly stating the representations of the developer. For correct representations, reference should be made to the documents required by section 718.503, Florida statutes, to be furnished by a developer to a buyer or lessee.

This offering is made only by the prospectus for the condominium and no statement should be relied upon if not made in the prospectus. Prices, plans and specifications are subject to change without notice. All depictions of appliances, counters, soffits, floor coverings and other matters of detail, including, without limitation, items of finish, furnishings and decoration, are conceptual only and are not necessarily included in each Unit. Stated dimensions are measured to the exterior boundaries of the exterior walls and the centerline of interior demising walls and in fact vary from the dimensions that would be determined by using the description and definition of the "Unit" set forth in the Declaration (which generally only includes the interior airspace between the perimeter walls and excludes interior structural components). For the precise Unit boundaries, please refer to the Declaration. Note that measurements of rooms set forth on this floor plan are generally taken at the greatest points of each given room (as if the room were a perfect rectangle), without regard for any cutouts. Accordingly, the area of the actual room will typically be smaller than the product obtained by multiplying the stated length times width. All dimensions and ceiling heights are approximate and may vary with actual construction, and all floor plans and development plans are subject to change. Additionally, ceiling height measurements exclude those areas where any soffits, moldings, drop and/or suspended ceilings and/or light fixtures may be installed. As such, the referenced ceiling height may not represent actual ceiling clearance. The seller reserves the absolute right, in its sole judgment and discretion, to substitute appliances, materials, fixtures, and equipment of equal or great quality or value for those specified. Additionally, for New York offerors, the complete offering terms are available in an offering plan available from Sponsor. CD16-0120.



First Level



Second Level





THE RITZ-CARLTON  
RESIDENCES

MIAMI BEACH

Villa C

4 Bedrooms | 4.5 Bathrooms  
Garage | Family Room

Ceiling Height (First Level) 9'-11" (3.02 m)

Ceiling Height (Second Level) 9'-1" (2.77 m)

Villa N07, N08

Enclosed Area: 5,200 Sq. Ft. (483 sq. m)

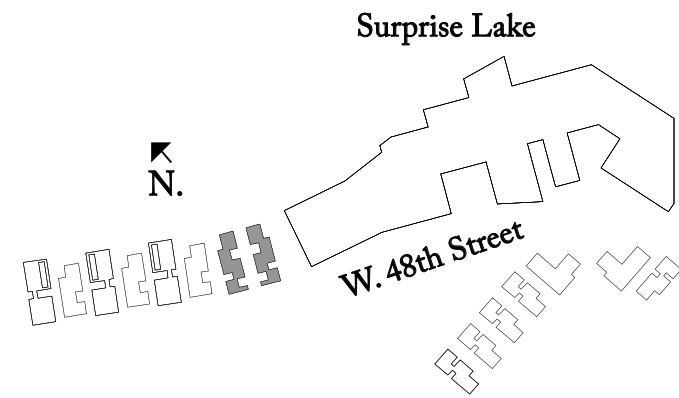
Terrace: 2,098 Sq. Ft. (195 sq. m)

Total Area: 7,298 Sq. Ft. (678 sq. m)

Lot Size

Villa N07: 9,743 Sq. Ft. (905 sq. m)

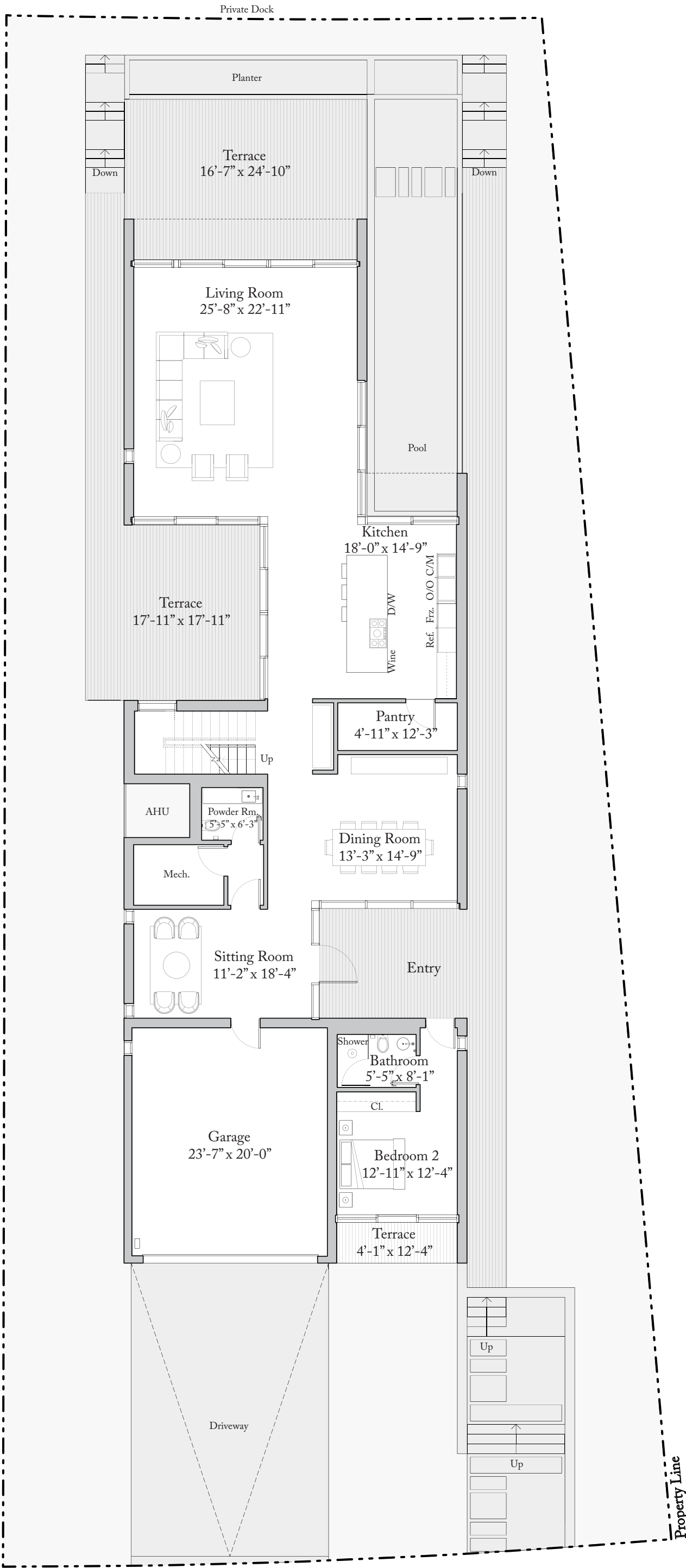
Villa N08: 9,635 Sq. Ft. (895 sq. m)



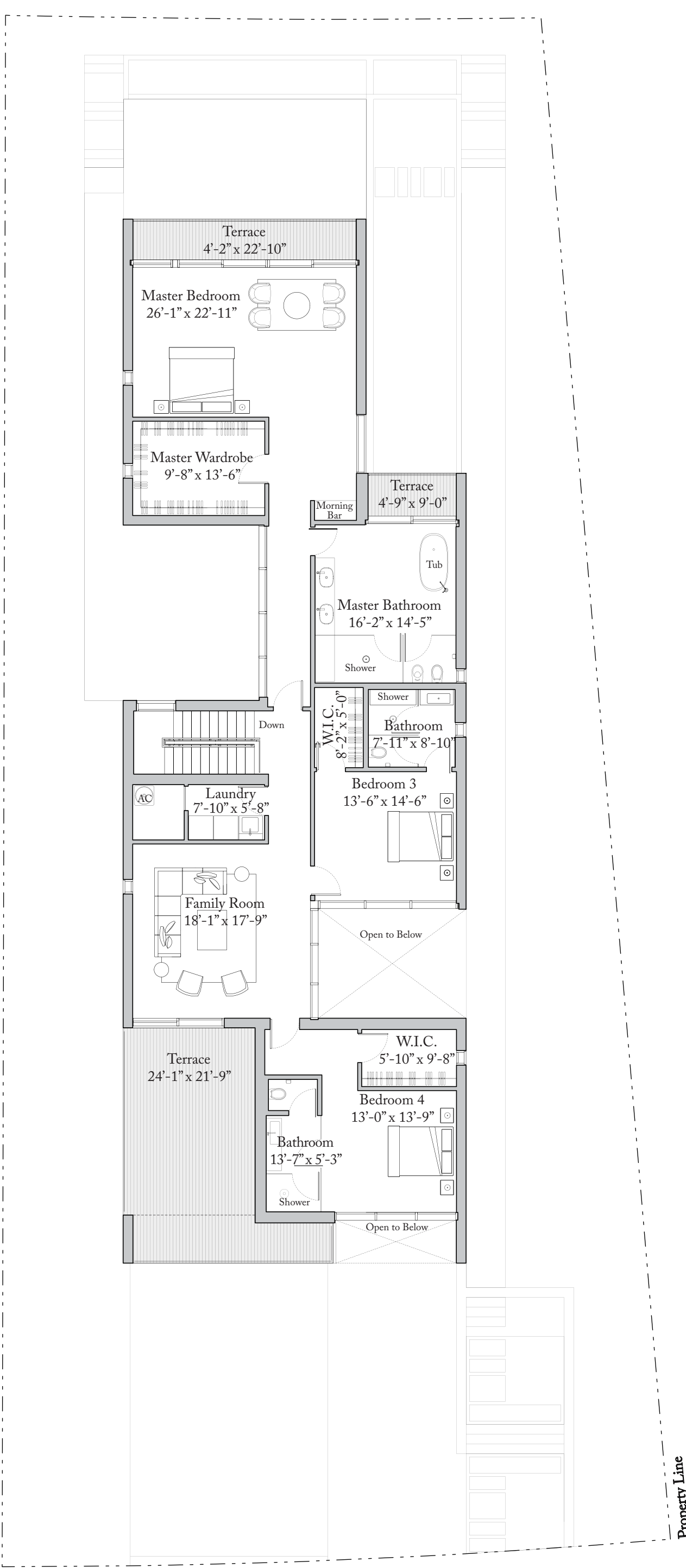
Exclusive Sales Agent: Douglas Elliman Development Marketing. The Ritz-Carlton Residences, Miami Beach are not owned, developed or sold by The Ritz-Carlton Hotel Company, L.L.C. 4701 North Meridian LLC uses The Ritz-Carlton mark under a license from The Ritz-Carlton Hotel Company, L.L.C.

ORAL REPRESENTATIONS cannot be relied upon as correctly stating the representations of the developer. For correct representations, reference should be made to the documents required by section 718.503, Florida statutes, to be furnished by a developer to a buyer or lessee.

This offering is made only by the prospectus for the condominium and no statement should be relied upon if not made in the prospectus. Prices, plans and specifications are subject to change without notice. All depictions of appliances, counters, soffits, floor coverings and other matters of detail, including, without limitation, items of finish, furnishings and decoration, are conceptual only and are not necessarily included in each Unit. Stated dimensions are measured to the exterior boundaries of the exterior walls and the centerline of interior demising walls and in fact vary from the dimensions that would be determined by using the description and definition of the "Unit" set forth in the Declaration (which generally only includes the interior airspace between the perimeter walls and excludes interior structural components). For the precise Unit boundaries, please refer to the Declaration. Note that measurements of rooms set forth on this floor plan are generally taken at the greatest points of each given room (as if the room were a perfect rectangle), without regard for any cutouts. Accordingly, the area of the actual room will typically be smaller than the product obtained by multiplying the stated length times width. All dimensions and ceiling heights are approximate and may vary with actual construction, and all floor plans and development plans are subject to change. Additionally, ceiling height measurements exclude those areas where any soffits, moldings, drop and/or suspended ceilings and/or light fixtures may be installed. As such, the referenced ceiling height may not represent actual ceiling clearance. The seller reserves the absolute right, in its sole judgment and discretion, to substitute appliances, materials, fixtures, and equipment of equal or great quality or value for those specified. Additionally, for New York offers, the complete offering terms are available in an offering plan available from Sponsor. CD16-0120.



First Level



Second Level