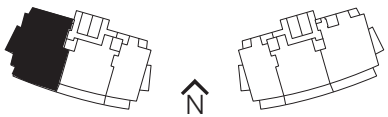


# RESIDENCE A

## TOWER WEST

|          |                      |
|----------|----------------------|
| Interior | 2,332 sq ft/217 sq m |
| Terraces | 522 sq ft/48 sq m    |
| Total    | 2,854 sq ft/265 sq m |

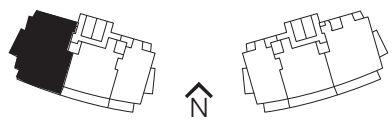
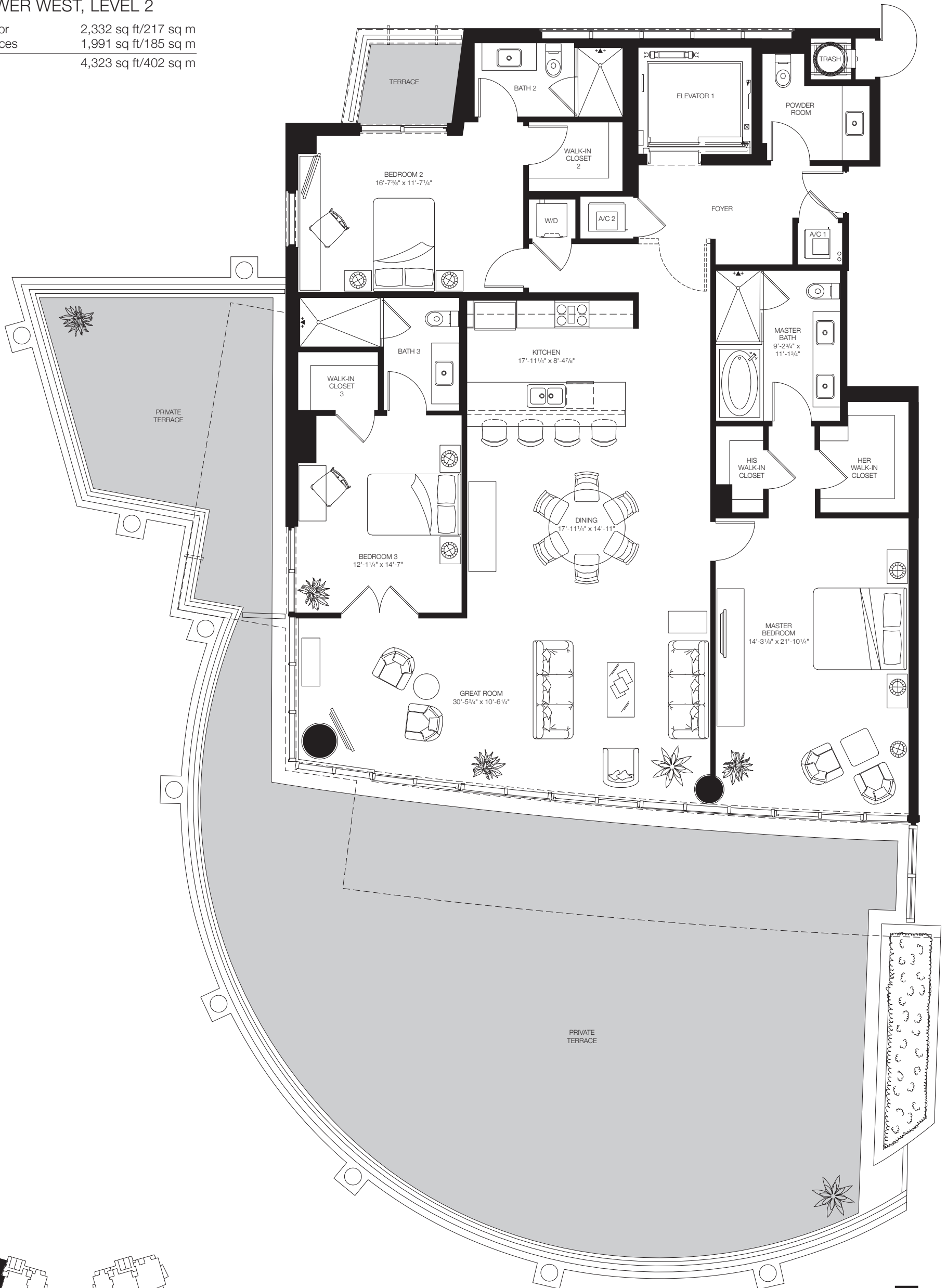


Stated dimensions are measured to the exterior boundaries of the exterior walls and the centerline of interior demising walls and in fact vary from the dimensions that would be determined by using the description and definition of the "Unit" set forth in the Declaration (which generally only includes the interior airspace between the perimeter walls and excludes interior structural components). For your reference, the area of the Unit, determined in accordance with those defined unit boundaries, is 2,151 sq ft. Note that measurements of rooms set forth on this floor plan are generally taken at the greatest points of each given room (as if the rooms were a perfect rectangle), without regard for any cutouts. Accordingly, the area of the actual rooms will typically be smaller than the product obtained by multiplying the stated length times width. All dimensions are approximate and may vary with actual construction. The rooms illustrated in the floor plans depicted in this brochure are not drawn to scale. All floor plans and development plans are subject to change.

# RESIDENCE A

## TOWER WEST, LEVEL 2

|          |                      |
|----------|----------------------|
| Interior | 2,332 sq ft/217 sq m |
| Terraces | 1,991 sq ft/185 sq m |
| Total    | 4,323 sq ft/402 sq m |

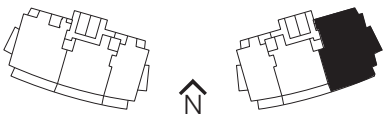


Stated dimensions are measured to the exterior boundaries of the exterior walls and the centerline of interior demising walls and in fact vary from the dimensions that would be determined by using the description and definition of the "Unit" set forth in the Declaration (which generally only includes the interior airspace between the perimeter walls and excludes interior structural components). For your reference, the area of the Unit, determined in accordance with those defined unit boundaries, is 2,151 sq ft. Note that measurements of rooms set forth on this floor plan are generally taken at the greatest points of each given room (as if the rooms were a perfect rectangle), without regard for any cutouts. Accordingly, the area of the actual rooms will typically be smaller than the product obtained by multiplying the stated length times width. All dimensions are approximate and may vary with actual construction. The rooms illustrated in the floor plans depicted in this brochure are not drawn to scale. All floor plans and development plans are subject to change.

# RESIDENCE A

REVERSED / TOWER EAST, LEVEL 2

|          |                      |
|----------|----------------------|
| Interior | 2,533 sq ft/235 sq m |
| Terraces | 2,199 sq ft/204 sq m |
| Total    | 4,732 sq ft/439 sq m |

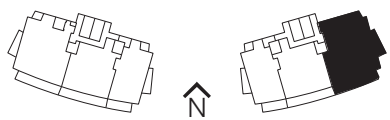


Stated dimensions are measured to the exterior boundaries of the exterior walls and the centerline of interior demising walls and in fact vary from the dimensions that would be determined by using the description and definition of the "Unit" set forth in the Declaration (which generally only includes the interior airspace between the perimeter walls and excludes interior structural components). For your reference, the area of the Unit, determined in accordance with those defined unit boundaries, is 2,321 sq ft. Note that measurements of rooms set forth on this floor plan are generally taken at the greatest points of each given room (as if the rooms were a perfect rectangle), without regard for any cutouts. Accordingly, the area of the actual rooms will typically be smaller than the product obtained by multiplying the stated length times width. All dimensions are approximate and may vary with actual construction. The rooms illustrated in the floor plans depicted in this brochure are not drawn to scale. All floor plans and development plans are subject to change.

# RESIDENCE A

REVERSED / TOWER EAST, LEVEL 3

|          |                      |
|----------|----------------------|
| Interior | 2,533 sq ft/235 sq m |
| Terraces | 532 sq ft/49 sq m    |
| Total    | 3,065 sq ft/284 sq m |

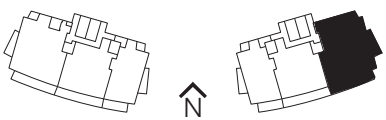


Stated dimensions are measured to the exterior boundaries of the exterior walls and the centerline of interior demising walls and in fact vary from the dimensions that would be determined by using the description and definition of the "Unit" set forth in the Declaration (which generally only includes the interior airspace between the perimeter walls and excludes interior structural components). For your reference, the area of the Unit, determined in accordance with those defined unit boundaries, is 2,321 sq ft. Note that measurements of rooms set forth on this floor plan are generally taken at the greatest points of each given room (as if the rooms were a perfect rectangle), without regard for any cutouts. Accordingly, the area of the actual rooms will typically be smaller than the product obtained by multiplying the stated length times width. All dimensions are approximate and may vary with actual construction. The rooms illustrated in the floor plans depicted in this brochure are not drawn to scale. All floor plans and development plans are subject to change.

# RESIDENCE A

REVERSED / TOWER EAST, LEVELS 4 & 5

|              |                             |
|--------------|-----------------------------|
| Interior     | 2,332 sq ft/217 sq m        |
| Terraces     | 522 sq ft/48 sq m           |
| <b>Total</b> | <b>2,854 sq ft/265 sq m</b> |



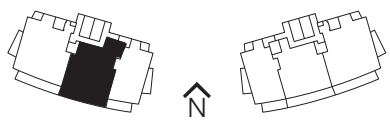
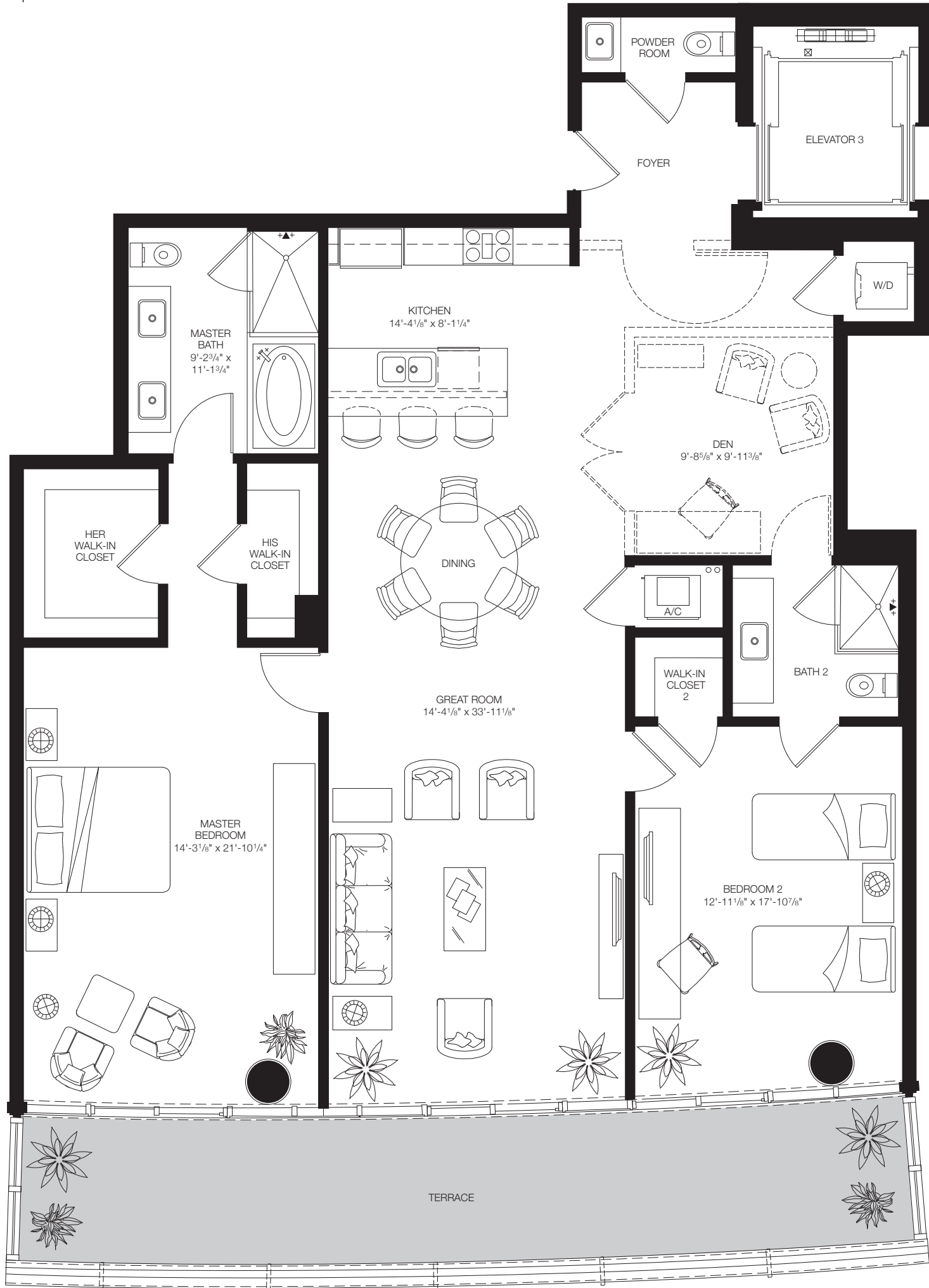
Stated dimensions are measured to the exterior boundaries of the exterior walls and the centerline of interior demising walls and in fact vary from the dimensions that would be determined by using the description and definition of the "Unit" set forth in the Declaration (which generally only includes the interior airspace between the perimeter walls and excludes interior structural components). For your reference, the area of the Unit, determined in accordance with those defined unit boundaries, is 2,151 sq ft. Note that measurements of rooms set forth on this floor plan are generally taken at the greatest points of each given room (as if the rooms were a perfect rectangle), without regard for any cutouts. Accordingly, the area of the actual rooms will typically be smaller than the product obtained by multiplying the stated length times width. All dimensions are approximate and may vary with actual construction. The rooms illustrated in the floor plans depicted in this brochure are not drawn to scale. All floor plans and development plans are subject to change.

# RESIDENCE B

## TOWER WEST

|          |                      |
|----------|----------------------|
| Interior | 1,854 sq ft/172 sq m |
| Terrace  | 345 sq ft/32 sq m    |
| Total    | 2,199 sq ft/204 sq m |

NOTE that the Residence on Level 2 has an extended Terrace with an area of 704 sq ft/65 sq m for Total area of 2,558 sq ft/237 sq m



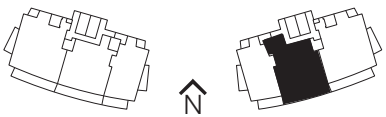
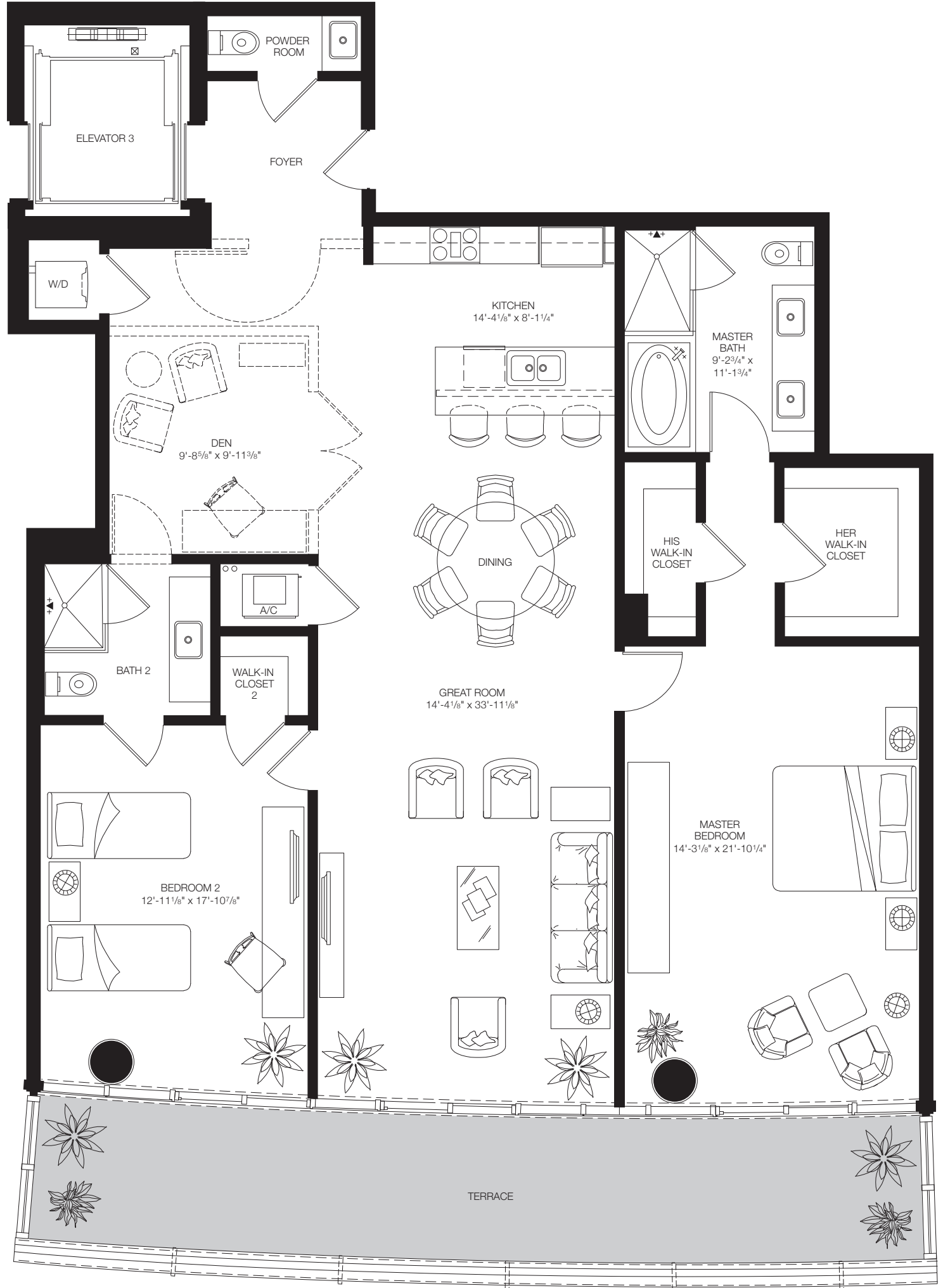
Stated dimensions are measured to the exterior boundaries of the exterior walls and the centerline of interior demising walls and in fact vary from the dimensions that would be determined by using the description and definition of the "Unit" set forth in the Declaration (which generally only includes the interior airspace between the perimeter walls and excludes interior structural components). For your reference, the area of the Unit, determined in accordance with those defined unit boundaries, is 1,733 sq ft. Note that measurements of rooms set forth on this floor plan are generally taken at the greatest points of each given room (as if the rooms were a perfect rectangle), without regard for any cutouts. Accordingly, the area of the actual rooms will typically be smaller than the product obtained by multiplying the stated length times width. All dimensions are approximate and may vary with actual construction. The rooms illustrated in the floor plans depicted in this brochure are not drawn to scale. All floor plans and development plans are subject to change.

# RESIDENCE B

## REVERSED / TOWER EAST

|          |                      |
|----------|----------------------|
| Interior | 1,854 sq ft/172 sq m |
| Terrace  | 345 sq ft/32 sq m    |
| Total    | 2,199 sq ft/204 sq m |

NOTE that the Residence on Level 2 has an extended Terrace with an area of 848 sq ft/79 sq m for Total area of 2702 sq ft/251 sq m



Stated dimensions are measured to the exterior boundaries of the exterior walls and the centerline of interior demising walls and in fact vary from the dimensions that would be determined by using the description and definition of the "Unit" set forth in the Declaration (which generally only includes the interior airspace between the perimeter walls and excludes interior structural components). For your reference, the area of the Unit, determined in accordance with those defined unit boundaries, is 1,733 sq ft. Note that measurements of rooms set forth on this floor plan are generally taken at the greatest points of each given room (as if the rooms were a perfect rectangle), without regard for any cutouts. Accordingly, the area of the actual rooms will typically be smaller than the product obtained by multiplying the stated length times width. All dimensions are approximate and may vary with actual construction. The rooms illustrated in the floor plans depicted in this brochure are not drawn to scale. All floor plans and development plans are subject to change.

# RESIDENCE C

## TOWER WEST

|          |                      |
|----------|----------------------|
| Interior | 1,525 sq ft/142 sq m |
| Terraces | 371 sq ft/34 sq m    |
| Total    | 1,896 sq ft/176 sq m |

NOTE that the Residence on Level 2 has extended Terraces with an area of 916 sq ft/85 sq m for Total area of 2,441 sq ft/227 sq m



Stated dimensions are measured to the exterior boundaries of the exterior walls and the centerline of interior demising walls and in fact vary from the dimensions that would be determined by using the description and definition of the "Unit" set forth in the Declaration (which generally only includes the interior airspace between the perimeter walls and excludes interior structural components). For your reference, the area of the Unit, determined in accordance with those defined unit boundaries, is 1,388 sq ft. Note that measurements of rooms set forth on this floor plan are generally taken at the greatest points of each given room (as if the rooms were a perfect rectangle), without regard for any cutouts. Accordingly, the area of the actual rooms will typically be smaller than the product obtained by multiplying the stated length times width. All dimensions are approximate and may vary with actual construction. The rooms illustrated in the floor plans depicted in this brochure are not drawn to scale. All floor plans and development plans are subject to change.



# RESIDENCE C

## REVERSED / TOWER EAST

|          |                      |
|----------|----------------------|
| Interior | 1,525 sq ft/142 sq m |
| Terraces | 371 sq ft/34 sq m    |
| Total    | 1,896 sq ft/176 sq m |



Stated dimensions are measured to the exterior boundaries of the exterior walls and the centerline of interior demising walls and in fact vary from the dimensions that would be determined by using the description and definition of the "Unit" set forth in the Declaration (which generally only includes the interior airspace between the perimeter walls and excludes interior structural components). For your reference, the area of the Unit, determined in accordance with those defined unit boundaries, is 1,388 sq ft. Note that measurements of rooms set forth on this floor plan are generally taken at the greatest points of each given room (as if the rooms were a perfect rectangle), without regard for any cutouts. Accordingly, the area of the actual rooms will typically be smaller than the product obtained by multiplying the stated length times width. All dimensions are approximate and may vary with actual construction. The rooms illustrated in the floor plans depicted in this brochure are not drawn to scale. All floor plans and development plans are subject to change.

# RESIDENCE C

REVERSED / TOWER EAST, LEVEL 2

|              |                             |
|--------------|-----------------------------|
| Interior     | 1,525 sq ft/142 sq m        |
| Terraces     | 1,716 sq ft/159 sq m        |
| <b>Total</b> | <b>3,241 sq ft/301 sq m</b> |



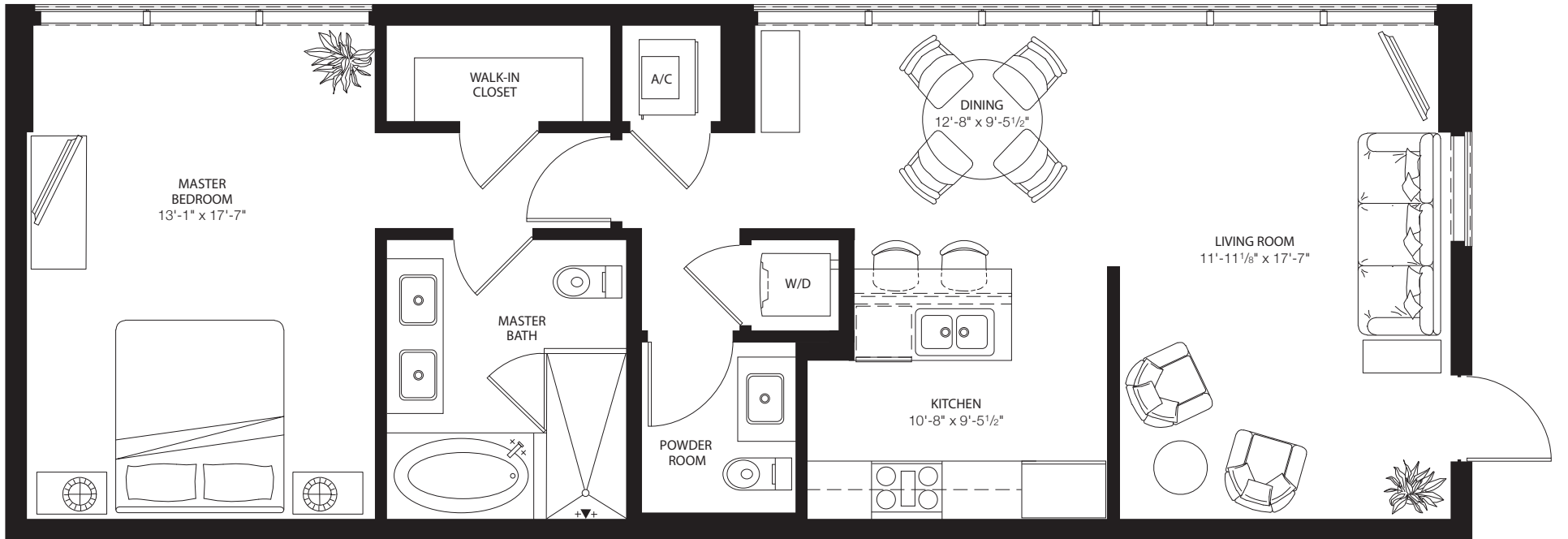
Stated dimensions are measured to the exterior boundaries of the exterior walls and the centerline of interior demising walls and in fact vary from the dimensions that would be determined by using the description and definition of the "Unit" set forth in the Declaration (which generally only includes the interior airspace between the perimeter walls and excludes interior structural components). For your reference, the area of the Unit, determined in accordance with those defined unit boundaries, is 1,388 sq ft. Note that measurements of rooms set forth on this floor plan are generally taken at the greatest points of each given room (as if the rooms were a perfect rectangle), without regard for any cutouts. Accordingly, the area of the actual rooms will typically be smaller than the product obtained by multiplying the stated length times width. All dimensions are approximate and may vary with actual construction. The rooms illustrated in the floor plans depicted in this brochure are not drawn to scale. All floor plans and development plans are subject to change.

# RESIDENCE D

## URBAN VILLAS

Interior

983 sq ft/91 sq m

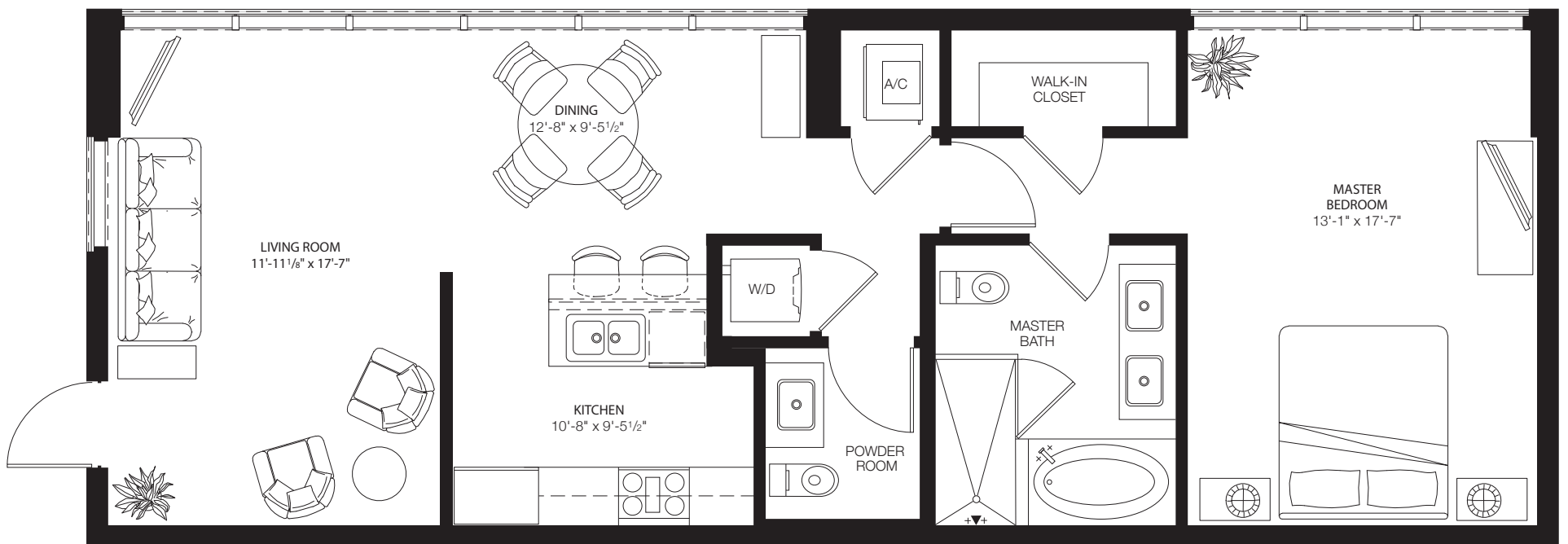


# RESIDENCE E

## URBAN VILLAS

Interior

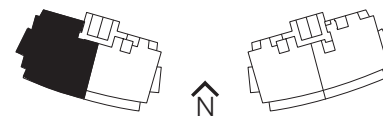
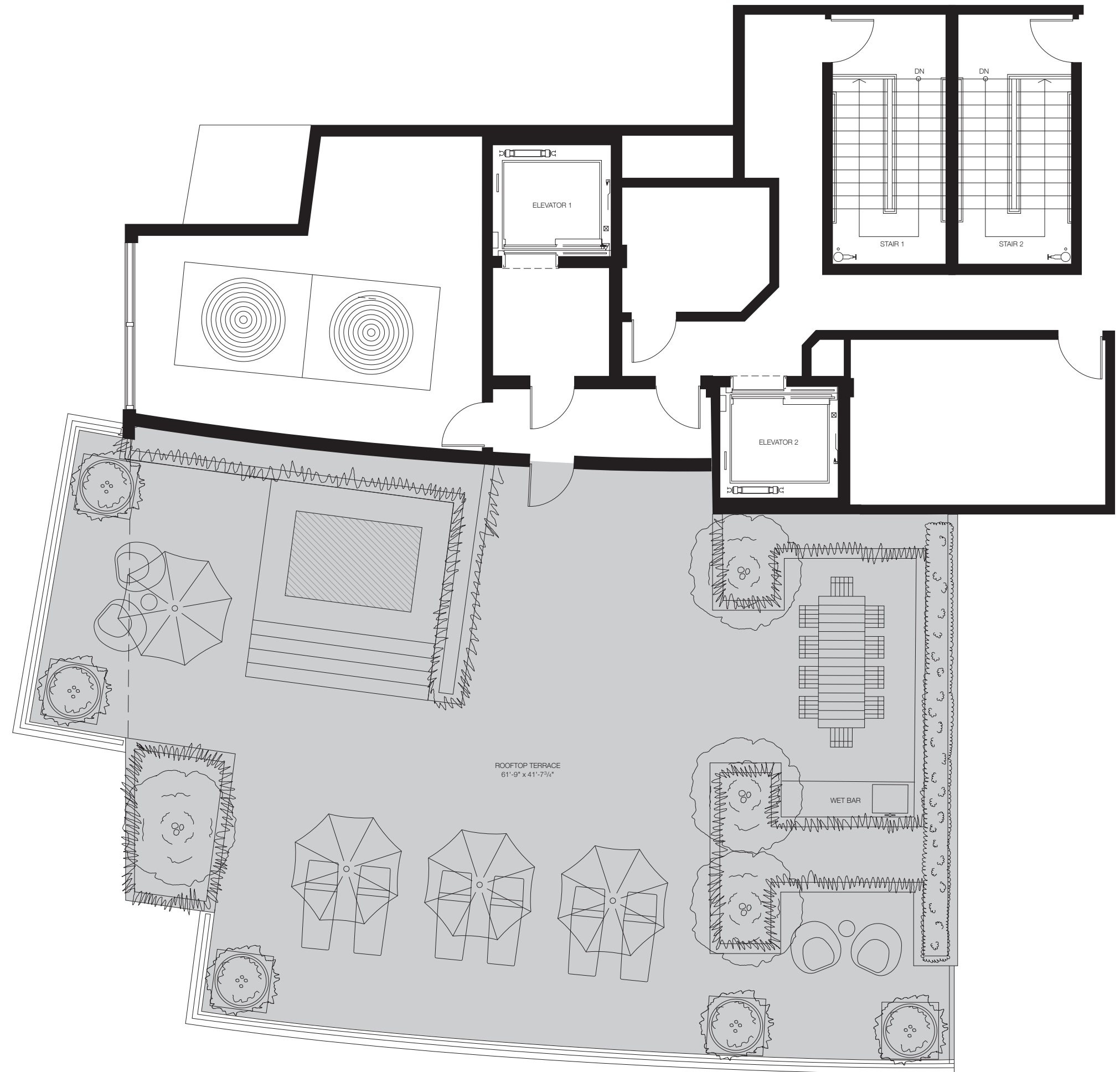
983 sq ft/91 sq m



# PH1

## TOWER WEST

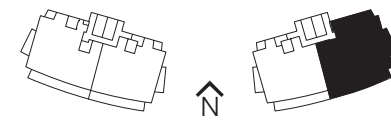
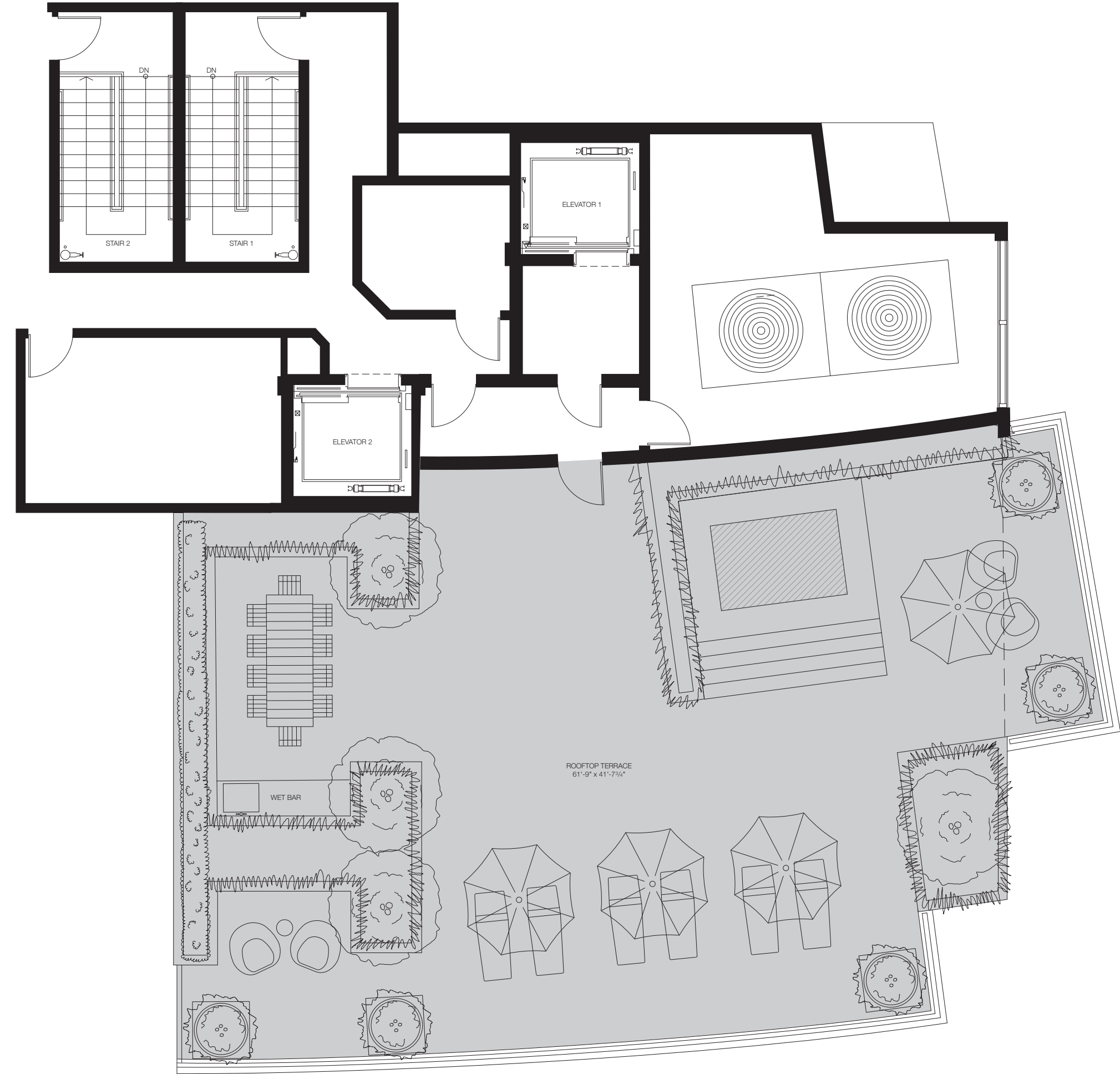
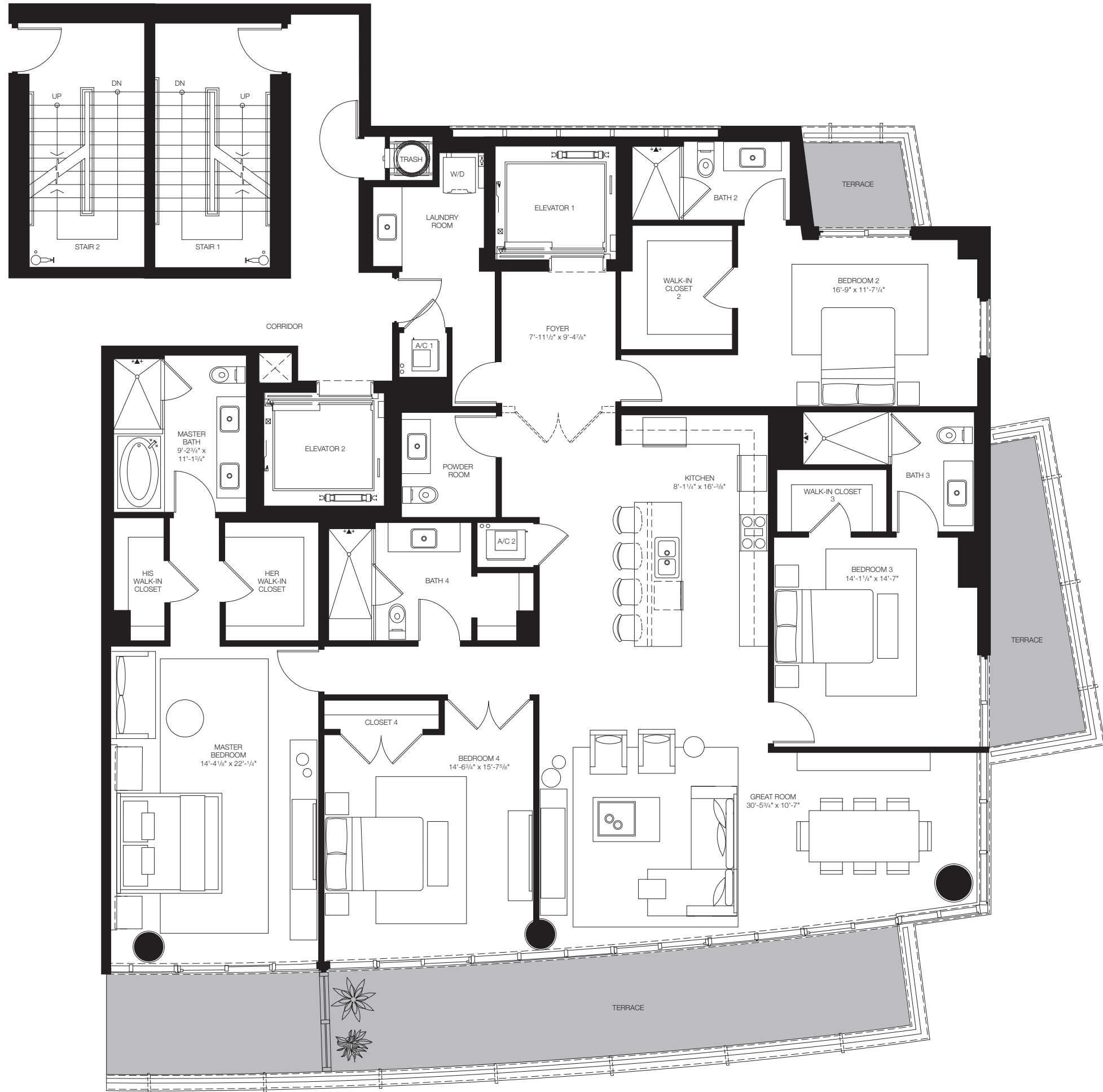
|               |                      |
|---------------|----------------------|
| Interior      | 2,933 sq ft/272 sq m |
| Terraces      | 642 sq ft/60 sq m    |
| Roof Interior | 89 sq ft/8 sq m      |
| Roof Terrace  | 2,675 sq ft/249 sq m |
| Total         | 6,339 sq ft/589 sq m |



# PH1

## REVERSED / TOWER EAST

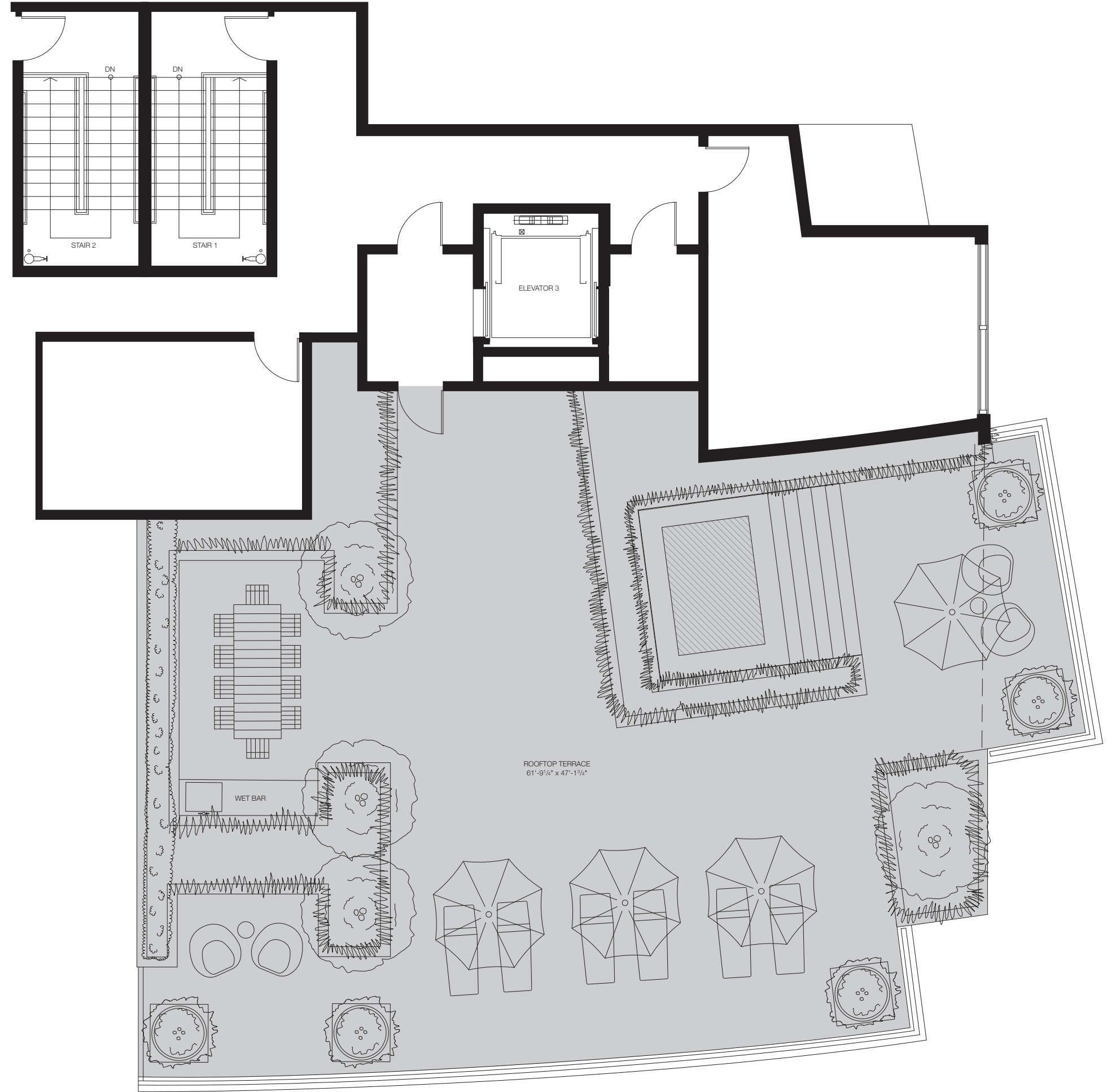
|               |                      |
|---------------|----------------------|
| Interior      | 2,933 sq ft/272 sq m |
| Terraces      | 642 sq ft/60 sq m    |
| Roof Interior | 89 sq ft/8 sq m      |
| Roof Terrace  | 2,675 sq ft/249 sq m |
| Total         | 6,339 sq ft/589 sq m |



# PH2

## TOWER WEST

|               |                      |
|---------------|----------------------|
| Interior      | 2,809 sq ft/261 sq m |
| Terraces      | 596 sq ft/55 sq m    |
| Roof Interior | 89 sq ft/8 sq m      |
| Roof Terrace  | 2,534 sq ft/235 sq m |
| Total         | 6,028 sq ft/559 sq m |



# PH2

## REVERSED / TOWER EAST

|               |                      |
|---------------|----------------------|
| Interior      | 2,809 sq ft/261 sq m |
| Terraces      | 596 sq ft/55 sq m    |
| Roof Interior | 89 sq ft/8 sq m      |
| Roof Terrace  | 2,534 sq ft/235 sq m |
| Total         | 6,028 sq ft/559 sq m |

