

glasshaus
in the Grove

RESIDENCE 101
2 Bedroom + 2½ Baths

Living Space	1,435 SF
Balcony	806 SF
Total	2,241 SF
	208 M ²

Stated dimensions are measured to the exterior boundaries of the exterior walls and the centerline of interior demising walls and in fact vary from the dimensions that would be determined by using the description and definition of the "Unit" set forth in the Declaration (which generally only includes the interior airspace between the perimeter walls and excludes interior structural components). Note that measurements of rooms set forth on this floor plan are generally taken at the greatest points of each given room (as if the room were a perfect rectangle), without regard for any cutouts. Accordingly, the area of the actual room will typically be smaller than the product obtained by multiplying the stated length times width. All dimensions are approximate and may vary with actual construction, and all floor plans and development plans are subject to change.

TERRACE

MASTER
BEDROOM
14' 2" x 15' 2"

GREAT ROOM
20' 0" x 18' 7"

HER CLOSET
7' 6" x 12' 0"

HIS
CLO

KITCHEN
18' 0" x 10' 0"

MASTER BATH
8' 4" x 10' 10"

REF

WIC
6' 2" x 6' 5"

W/D

AC

POWDER

BEDROOM 2
15' 6" x 10' 0"

CLOSET

BEDROOM 3
20' 2" x 10' 0"

BATH

CLOSET

glasshaus
in the Grove

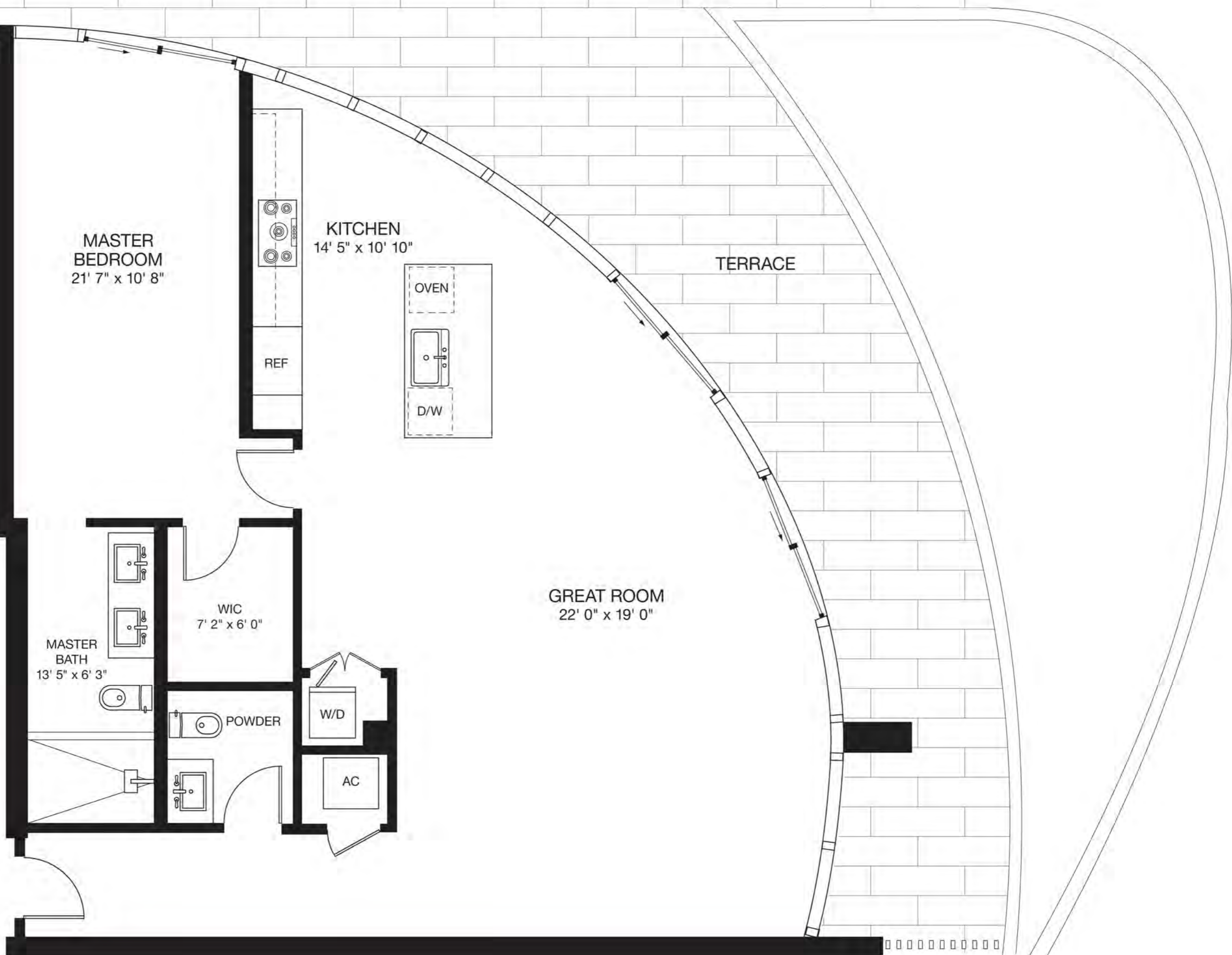
RESIDENCE 102
3 Bedroom + 2½ Baths

Living Space	1,927 SF
Balcony	1,026 SF
Total	2,953 SF
	274 M ²

glasshaus
in the Grove

RESIDENCE 103
1 Bedroom + 1½ Baths

Living Space	1,213 SF
Terrace	587 SF
Total	1,800 SF
	167 M ²



Stated dimensions are measured to the exterior boundaries of the exterior walls and the centerline of interior demising walls and in fact vary from the dimensions that would be determined by using the description and definition of the "Unit" set forth in the Declaration (which generally only includes the interior airspace between the perimeter walls and excludes interior structural components). Note that measurements of rooms set forth on this floor plan are generally taken at the greatest points of each given room (as if the room were a perfect rectangle), without regard for any cutouts. Accordingly, the area of the actual room will typically be smaller than the product obtained by multiplying the stated length times width. All dimensions are approximate and may vary with actual construction, and all floor plans and development plans are subject to change.



RESIDENCE 201

2 Bedroom + 2½ Baths + Den

Living Space 1,623 SF

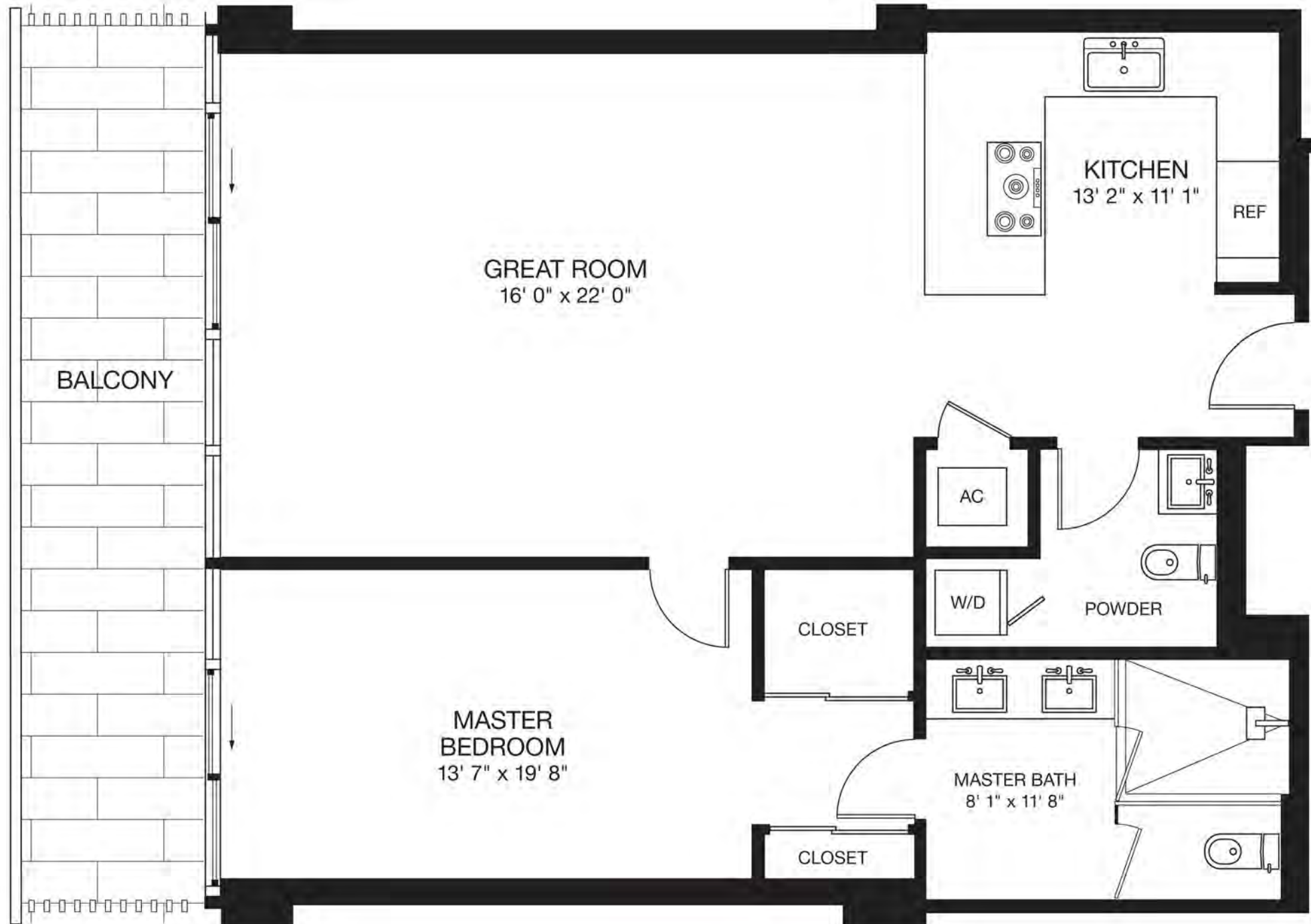
Balcony 158 SF

Total 1,781 SF

165 M²

glasshaus
in the Grove

Stated dimensions are measured to the exterior boundaries of the exterior walls and the centerline of interior demising walls and in fact vary from the dimensions that would be determined by using the description and definition of the "Unit" set forth in the Declaration (which generally only includes the interior airspace between the perimeter walls and excludes interior structural components). Note that measurements of rooms set forth on this floor plan are generally taken at the greatest points of each given room (as if the room were a perfect rectangle), without regard for any cutouts. Accordingly, the area of the actual room will typically be smaller than the product obtained by multiplying the stated length times width. All dimensions are approximate and may vary with actual construction, and all floor plans and development plans are subject to change.



RESIDENCE 202

1 Bedroom + 1½ Baths

Living Space	912 SF
Balcony	168 SF
Total	1,080 SF
	100 M ²

glasshaus
in the Grove

Stated dimensions are measured to the exterior boundaries of the exterior walls and the centerline of interior demising walls and in fact vary from the dimensions that would be determined by using the description and definition of the "Unit" set forth in the Declaration (which generally only includes the interior airspace between the perimeter walls and excludes interior structural components). Note that measurements of rooms set forth on this floor plan are generally taken at the greatest points of each given room (as if the room were a perfect rectangle), without regard for any cutouts. Accordingly, the area of the actual room will typically be smaller than the product obtained by multiplying the stated length times width. All dimensions are approximate and may vary with actual construction, and all floor plans and development plans are subject to change.



RESIDENCE 203

2 Bedroom + 2½ Baths + Den

Living Space 1,621 SF

Balcony 157 SF

Total 1,778 SF

165 M²

glasshaus
in the Grove

Stated dimensions are measured to the exterior boundaries of the exterior walls and the centerline of interior demising walls and in fact vary from the dimensions that would be determined by using the description and definition of the "Unit" set forth in the Declaration (which generally only includes the interior airspace between the perimeter walls and excludes interior structural components). Note that measurements of rooms set forth on this floor plan are generally taken of the greatest points of each given room (as if the room were a perfect rectangle), without regard for any cutouts. Accordingly, the area of the actual room will typically be smaller than the product obtained by multiplying the stated length times width. All dimensions are approximate and may vary with actual construction, and all floor plans and development plans are subject to change.



RESIDENCE 204

3 Bedroom + 3½ Baths

Living Space	2,095 SF
Balcony	146 SF
Total	2,241 SF
	208 M ²

glasshaus
in the Grove



RESIDENCE 205

3 Bedroom + 3½ Baths

Living Space 1,977 SF

Balcony 170 SF

Total 2,147 SF

199 M²

glasshaus
in the Grove



RESIDENCE 301

2 Bedroom + 2½ Baths + Den

Living Space 1,623 SF

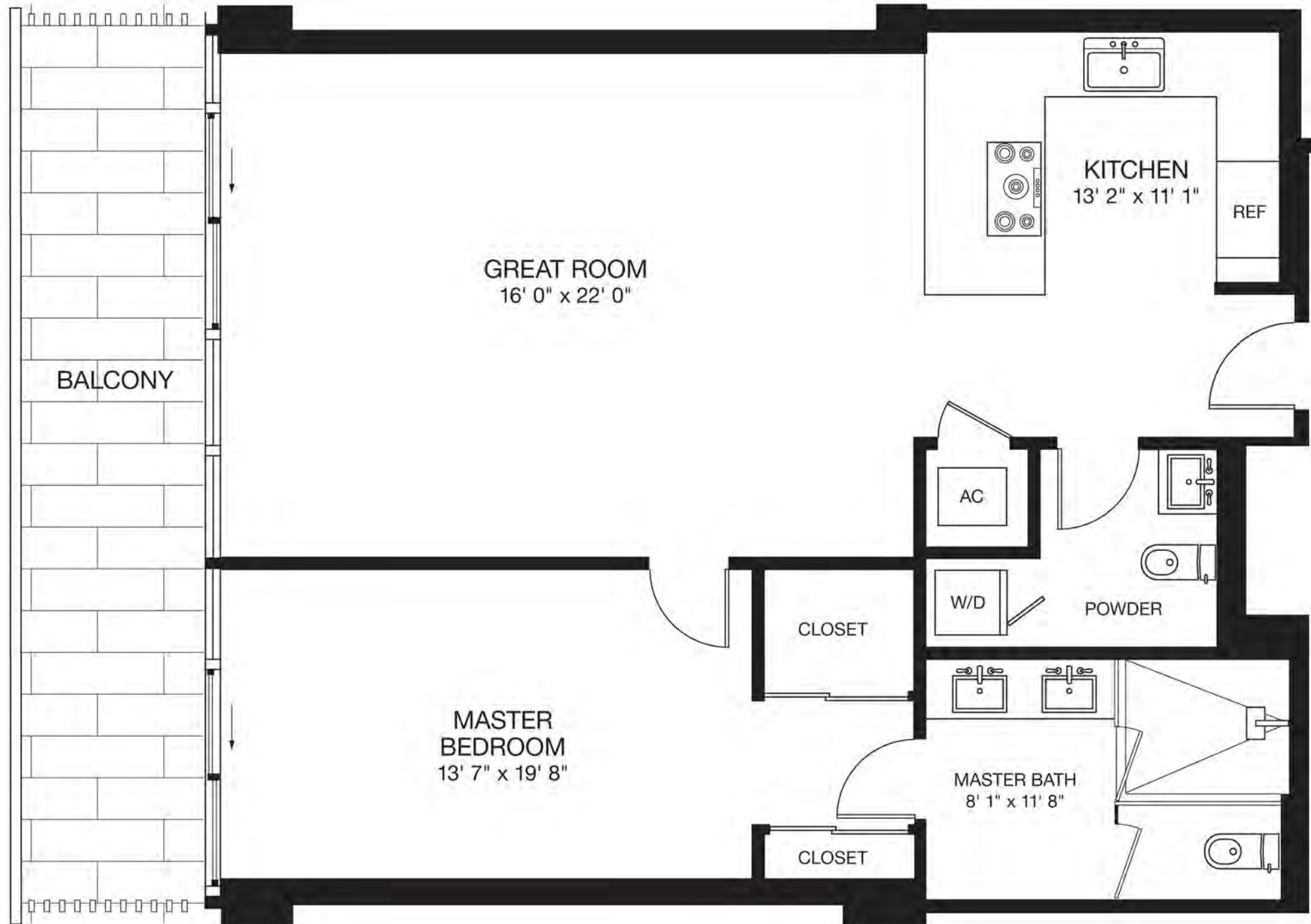
Balcony 158 SF

Total 1,781 SF

165 M²

glasshaus
in the Grove

Stated dimensions are measured to the exterior boundaries of the exterior walls and the centerline of interior demising walls and in fact vary from the dimensions that would be determined by using the description and definition of the "Unit" set forth in the Declaration (which generally only includes the interior airspace between the perimeter walls and excludes interior structural components). Note that measurements of rooms set forth on this floor plan are generally taken at the greatest points of each given room (as if the room were a perfect rectangle), without regard for any cutouts. Accordingly, the area of the actual room will typically be smaller than the product obtained by multiplying the stated length times width. All dimensions are approximate and may vary with actual construction, and all floor plans and development plans are subject to change.



RESIDENCE 302

1 Bedroom + 1½ Baths

Living Space	912 SF
Balcony	168 SF
Total	1,080 SF
	100 M ²

glasshaus
in the Grove



RESIDENCE 303

2 Bedroom + 2½ Baths + Den

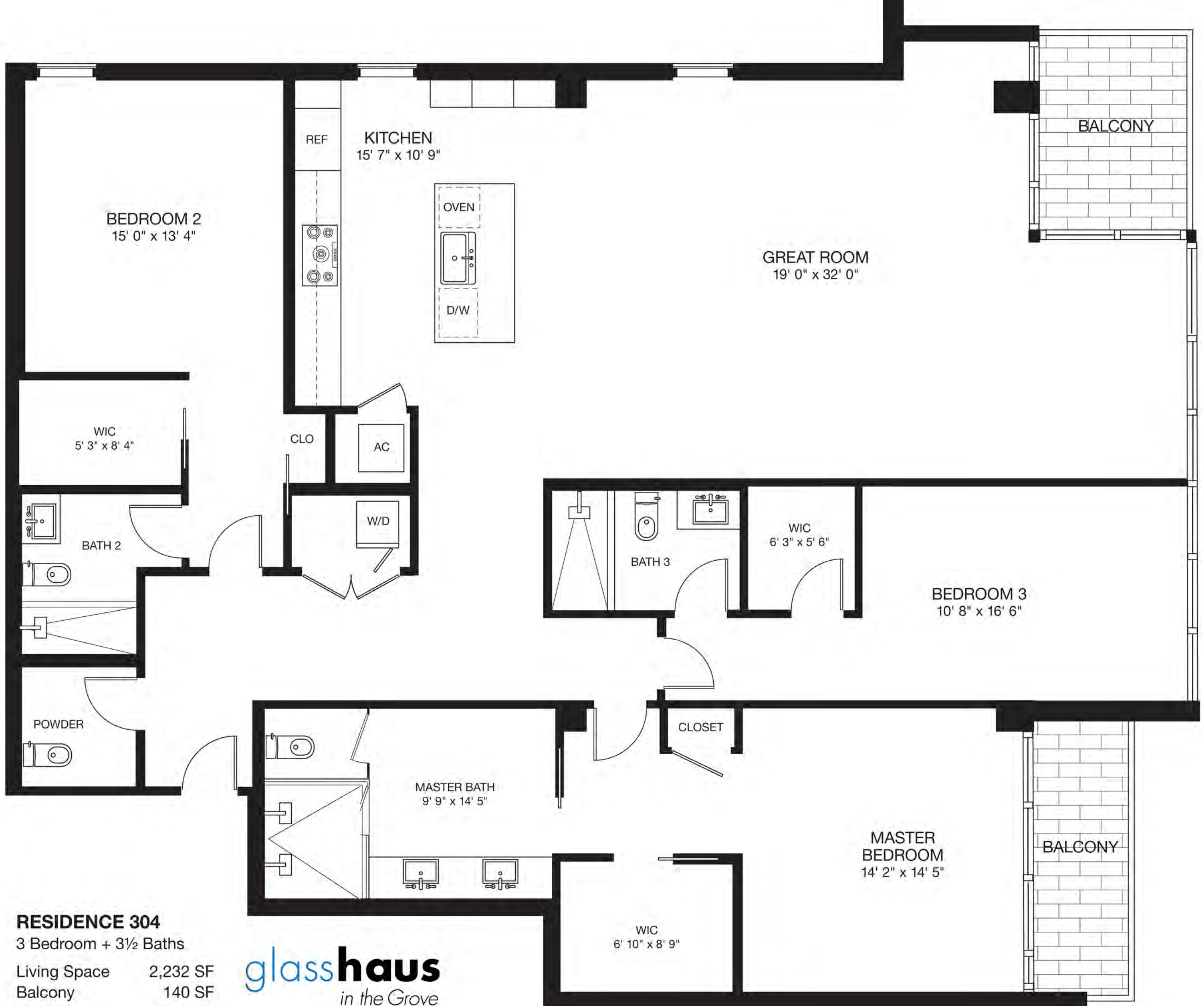
Living Space 1,621 SF

Balcony 157 SF

Total 1,778 SF

165 M²

glasshaus
in the Grove



RESIDENCE 304

3 Bedroom + 3½ Baths

Living Space	2,232 SF
Balcony	140 SF
Total	2,372 SF
	220 M ²

glasshaus
in the Grove

Stated dimensions are measured to the exterior boundaries of the exterior walls and the centerline of interior demising walls and in fact vary from the dimensions that would be determined by using the description and definition of the "Unit" set forth in the Declaration (which generally only includes the interior airspace between the perimeter walls and excludes interior structural components). Note that measurements of rooms set forth on this floor plan are generally taken at the greatest points of each given room (as if the room were a perfect rectangle), without regard for any cutouts. Accordingly, the area of the actual room will typically be smaller than the product obtained by multiplying the stated length times width. All dimensions are approximate and may vary with actual construction, and all floor plans and development plans are subject to change.



RESIDENCE 305

3 Bedroom + 3½ Baths

Living Space 1,909 SF

Balcony 195 SF

Total 2,104 SF

195 M²

glasshaus
in the Grove



RESIDENCE 401

2 Bedroom + 2½ Baths + Den

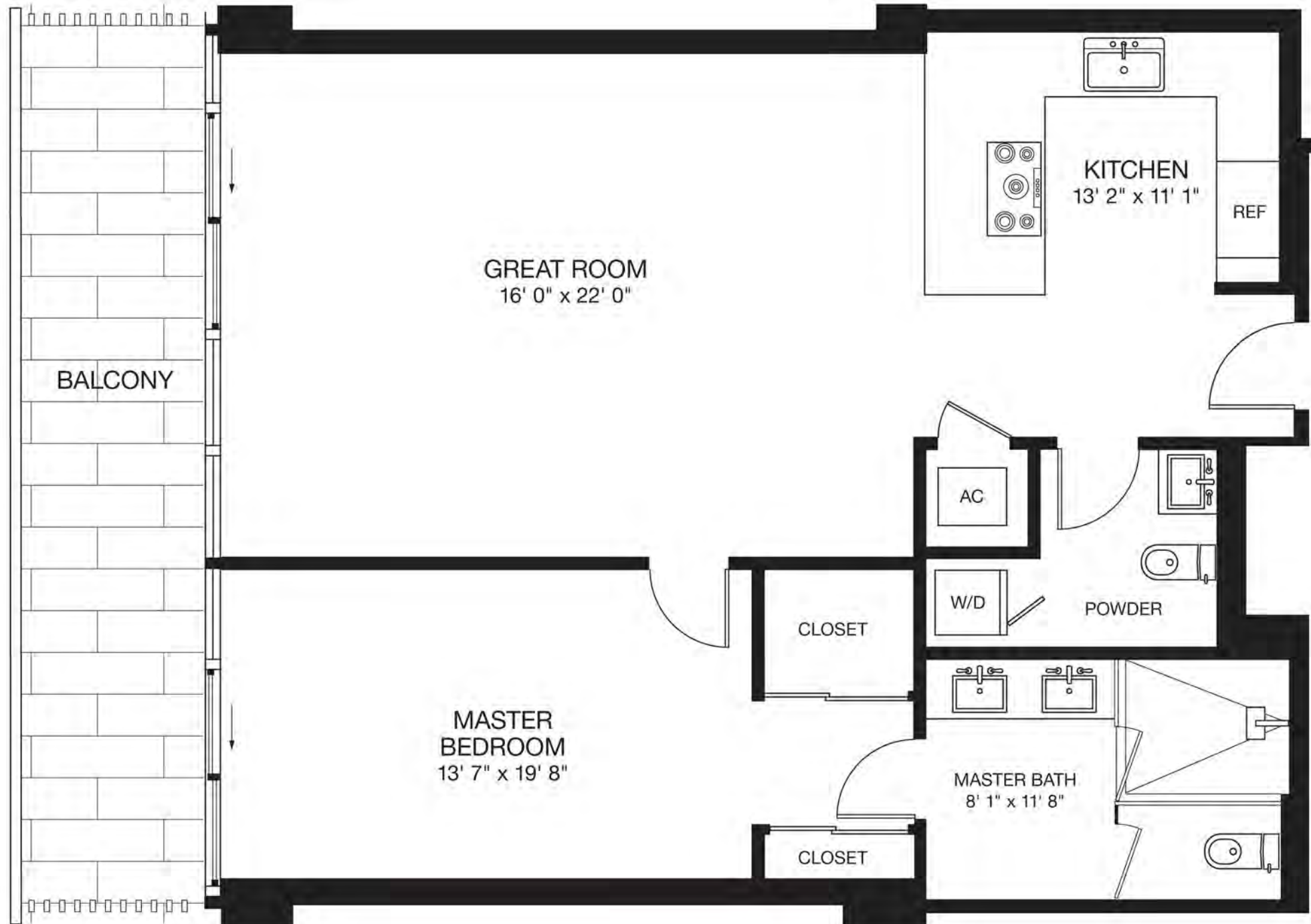
Living Space 1,623 SF

Balcony 158 SF

Total 1,781 SF

165 M²

glasshaus
in the Grove



RESIDENCE 402

1 Bedroom + 1½ Baths

Living Space	912 SF
Balcony	168 SF
Total	1,080 SF
	100 M ²

glasshaus
in the Grove

Stated dimensions are measured to the exterior boundaries of the exterior walls and the centerline of interior demising walls and in fact vary from the dimensions that would be determined by using the description and definition of the "Unit" set forth in the Declaration (which generally only includes the interior airspace between the perimeter walls and excludes interior structural components). Note that measurements of rooms set forth on this floor plan are generally taken at the greatest points of each given room (as if the room were a perfect rectangle), without regard for any cutouts. Accordingly, the area of the actual room will typically be smaller than the product obtained by multiplying the stated length times width. All dimensions are approximate and may vary with actual construction, and all floor plans and development plans are subject to change.



RESIDENCE 403

2 Bedroom + 2½ Baths + Den

Living Space 1,621 SF

Balcony 157 SF

Total 1,778 SF

165 M²

glasshaus
in the Grove

Stated dimensions are measured to the exterior boundaries of the exterior walls and the centerline of interior demising walls and in fact vary from the dimensions that would be determined by using the description and definition of the "Unit" set forth in the Declaration (which generally only includes the interior airspace between the perimeter walls and excludes interior structural components). Note that measurements of rooms set forth on this floor plan are generally taken of the greatest points of each given room (as if the room were a perfect rectangle), without regard for any cutouts. Accordingly, the area of the actual room will typically be smaller than the product obtained by multiplying the stated length times width. All dimensions are approximate and may vary with actual construction, and all floor plans and development plans are subject to change.



RESIDENCE 404
3 Bedroom + 3½ Baths

Living Space	2,167 SF
Balcony	213 SF
Total	2,380 SF
	221 M ²

glasshaus
in the Grove



RESIDENCE 405

3 Bedroom + 3½ Baths

Living Space 2,055 SF

Balcony 137 SF

Total 2,192 SF

204 M²

glasshaus
in the Grove



RESIDENCE 501

2 Bedroom + 2½ Baths + Den

Living Space 1,623 SF

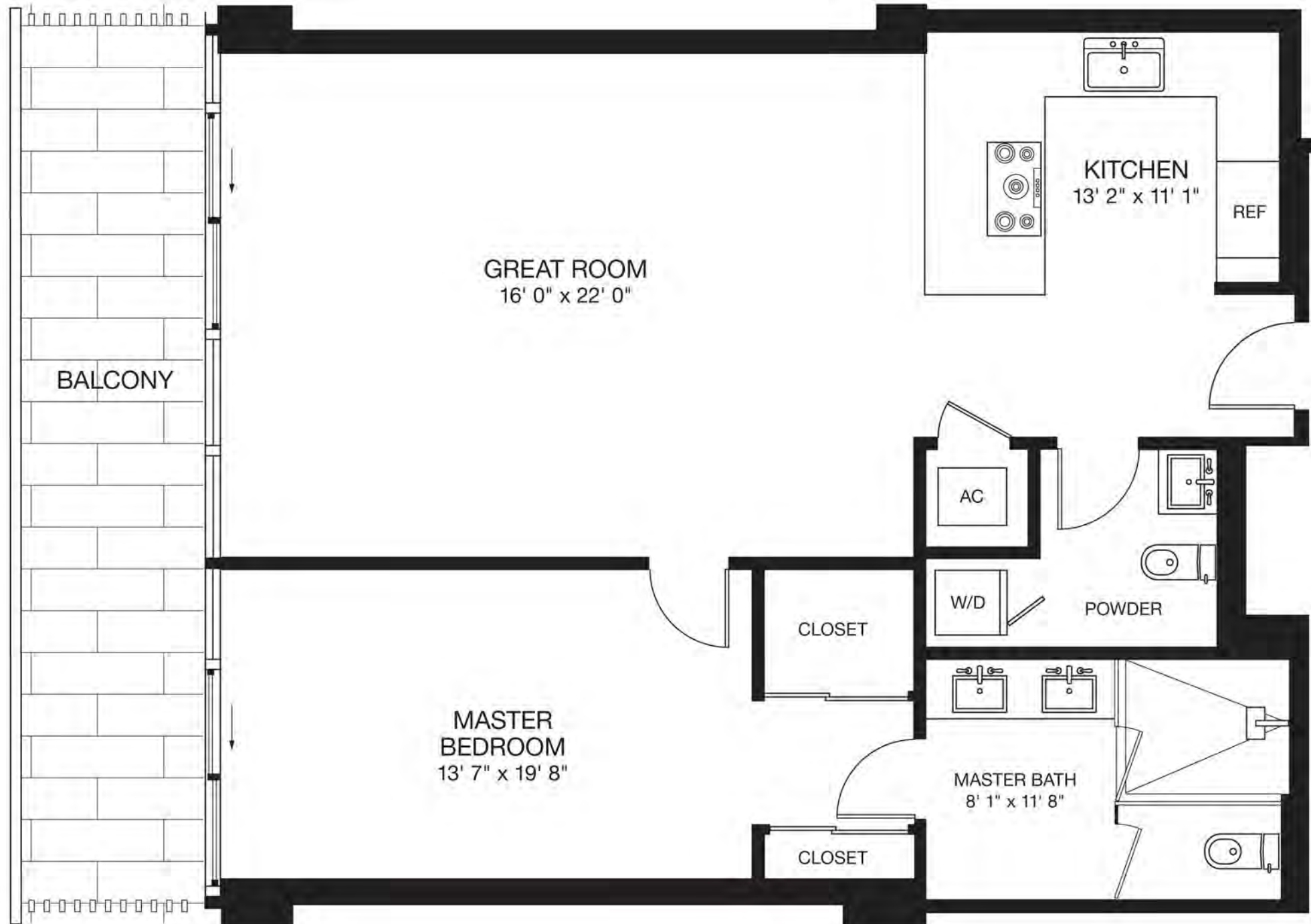
Balcony 158 SF

Total 1,781 SF

165 M²

glasshaus
in the Grove

Stated dimensions are measured to the exterior boundaries of the exterior walls and the centerline of interior demising walls and in fact vary from the dimensions that would be determined by using the description and definition of the "Unit" set forth in the Declaration (which generally only includes the interior airspace between the perimeter walls and excludes interior structural components). Note that measurements of rooms set forth on this floor plan are generally taken at the greatest points of each given room (as if the room were a perfect rectangle), without regard for any cutouts. Accordingly, the area of the actual room will typically be smaller than the product obtained by multiplying the stated length times width. All dimensions are approximate and may vary with actual construction, and all floor plans and development plans are subject to change.



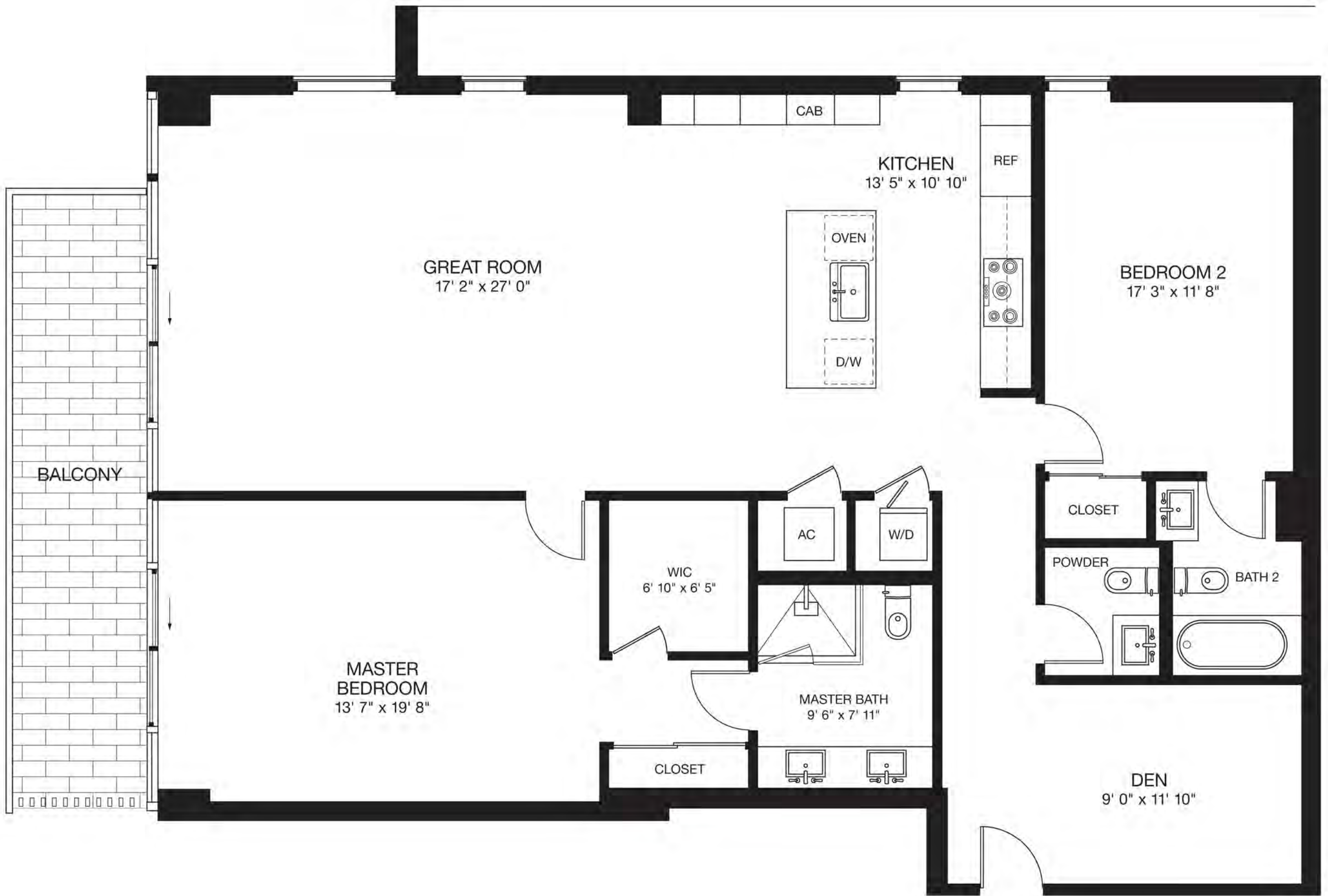
RESIDENCE 502

1 Bedroom + 1½ Baths

Living Space	912 SF
Balcony	168 SF
Total	1,080 SF
	100 M ²

glasshaus
in the Grove

Stated dimensions are measured to the exterior boundaries of the exterior walls and the centerline of interior demising walls and in fact vary from the dimensions that would be determined by using the description and definition of the "Unit" set forth in the Declaration (which generally only includes the interior airspace between the perimeter walls and excludes interior structural components). Note that measurements of rooms set forth on this floor plan are generally taken at the greatest points of each given room (as if the room were a perfect rectangle), without regard for any cutouts. Accordingly, the area of the actual room will typically be smaller than the product obtained by multiplying the stated length times width. All dimensions are approximate and may vary with actual construction, and all floor plans and development plans are subject to change.



RESIDENCE 503

2 Bedroom + 2½ Baths + Den

Living Space 1,621 SF

Balcony 157 SF

Total 1,778 SF

165 M²

glasshaus
in the Grove



RESIDENCE 504

3 Bedroom + 3½ Baths

Living Space	2,239 SF
Balcony	141 SF
Total	2,380 SF
	221 M ²

glasshaus
in the Grove

Stated dimensions are measured to the exterior boundaries of the exterior walls and the centerline of interior demising walls and in fact vary from the dimensions that would be determined by using the description and definition of the "Unit" set forth in the Declaration (which generally only includes the interior airspace between the perimeter walls and excludes interior structural components). Note that measurements of rooms set forth on this floor plan are generally taken at the greatest points of each given room (as if the room were a perfect rectangle), without regard for any cutouts. Accordingly, the area of the actual room will typically be smaller than the product obtained by multiplying the stated length times width. All dimensions are approximate and may vary with actual construction, and all floor plans and development plans are subject to change.



RESIDENCE 505

3 Bedroom + 3½ Baths

Living Space	2,024 SF
Balcony	151 SF
Total	2,175 SF
	202 M ²

glasshaus
in the Grove

Stated dimensions are measured to the exterior boundaries of the exterior walls and the centerline of interior demising walls and in fact vary from the dimensions that would be determined by using the description and definition of the "Unit" set forth in the Declaration (which generally only includes the interior airspace between the perimeter walls and excludes interior structural components). Note that measurements of rooms set forth on this floor plan are generally taken at the greatest points of each given room (as if the room were a perfect rectangle), without regard for any cutouts. Accordingly, the area of the actual room will typically be smaller than the product obtained by multiplying the stated length times width. All dimensions are approximate and may vary with actual construction, and all floor plans and development plans are subject to change.