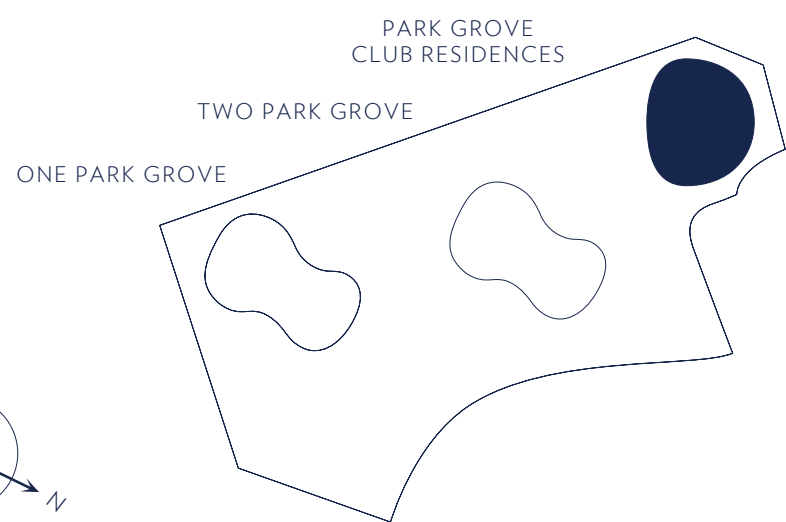
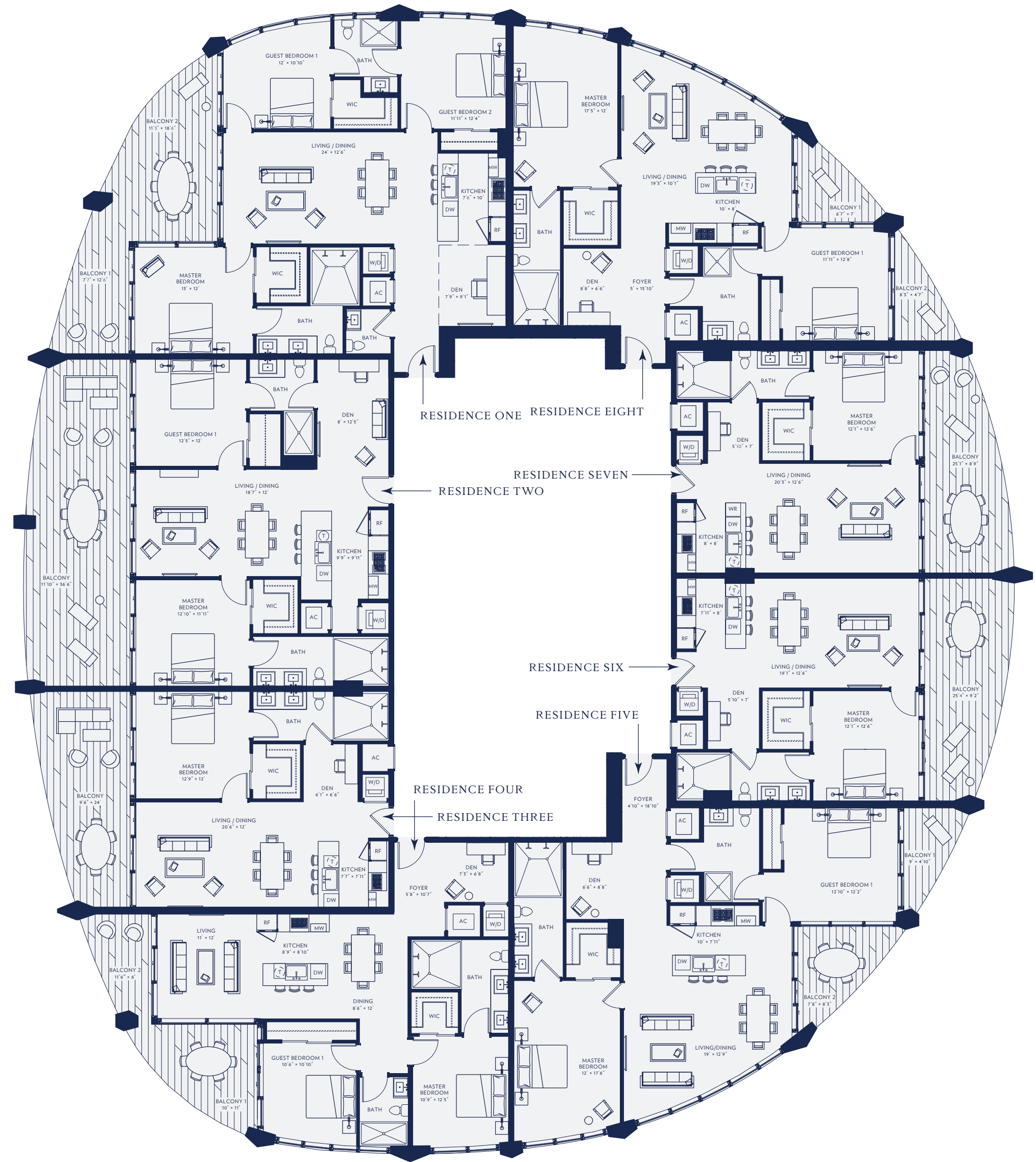


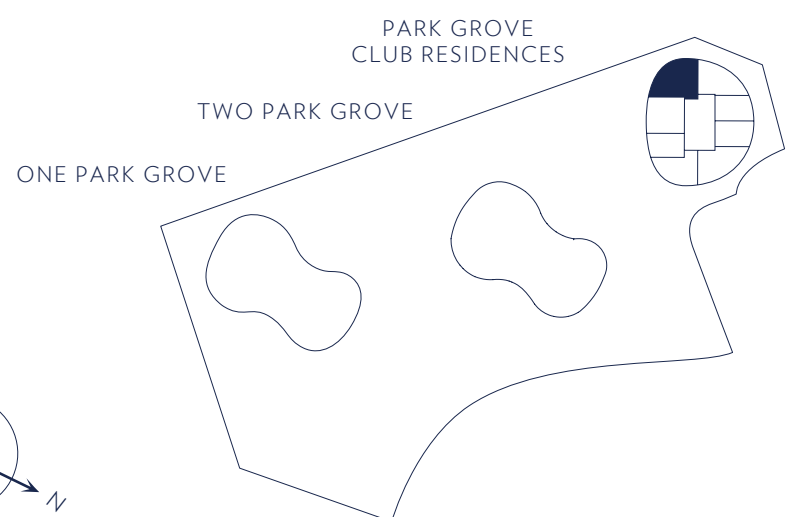
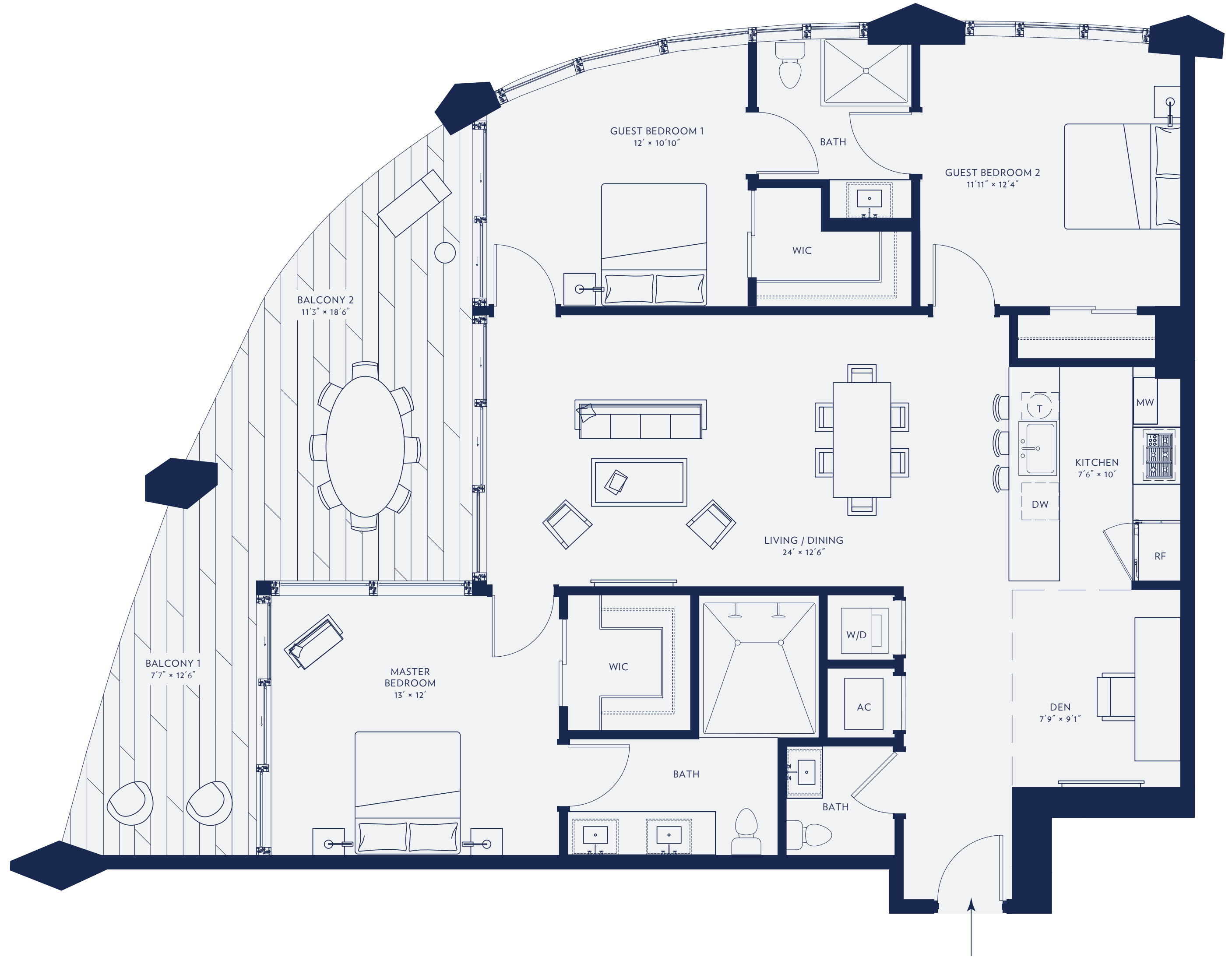
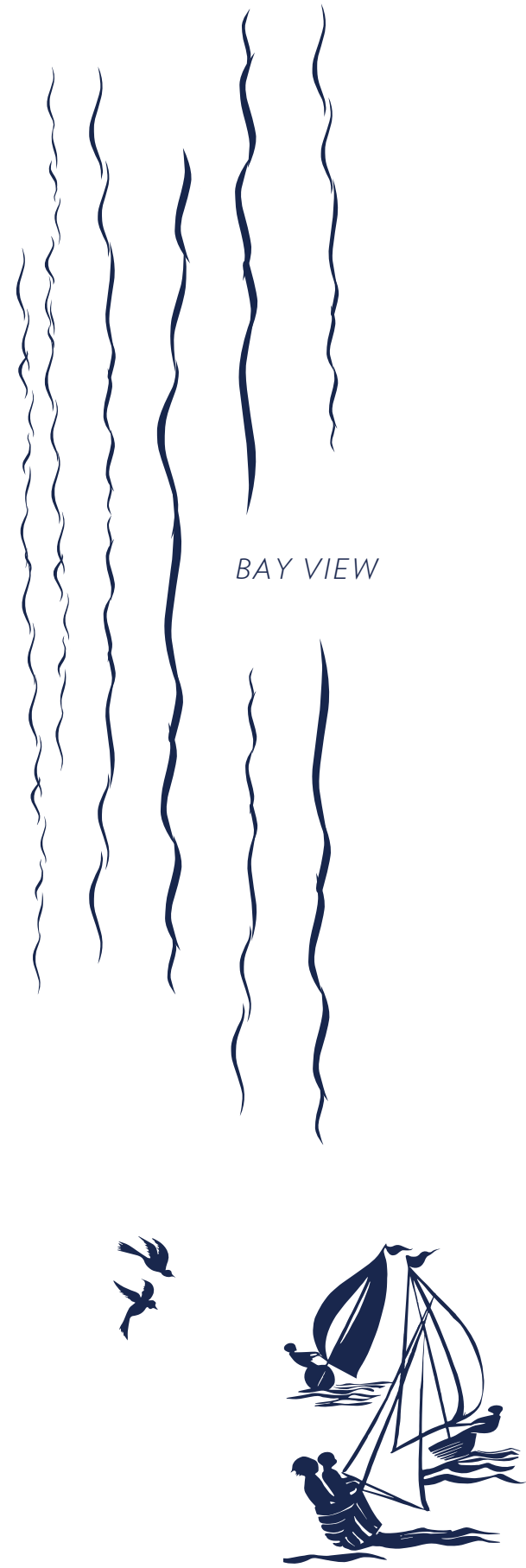
# KEY PLAN



FLOOR TO CEILING WINDOWS WITH BAY & GROVE VIEWS  
PRIVATE BAYFRONT TERRACES WITH BAY VIEWS

Stated dimensions are measured to the exterior boundaries of the exterior walls and the centerline of interior demising walls and in fact vary from the dimensions that would be determined by using the description and definition of the "Unit" set forth in the Declaration (which generally only includes the interior airspace between the perimeter walls and excludes interior structural components). Note that measurements of rooms set forth on this floor plan are generally taken at the greatest points of each given room (as if the room were a perfect rectangle), without regard for any cutouts. Accordingly, the area of the actual room will typically be smaller than the product obtained by multiplying the stated length times width. All dimensions are approximate and may vary with actual construction, and all floor plans and development plans are subject to change.

# RESIDENCE ONE



3 BEDROOMS WITH DEN  
2 BATHROOMS  
1 POWDER ROOM

1,390 SQ FT · 129 SQ M INTERIOR  
308 SQ FT · 27 SQ M EXTERIOR  
1,698 SQ FT · 158 SQ M TOTAL

10 FOOT FLOOR TO CEILING GLASS OVERLOOKING BISCAYNE BAY

PRIVATE WATERFRONT TERRACES

EXPANSIVE DINING & ENTERTAINING AREAS

PRIVATE CORNER MASTER BEDROOM WITH WALK-IN CLOSET

HIS & HERS VANITIES

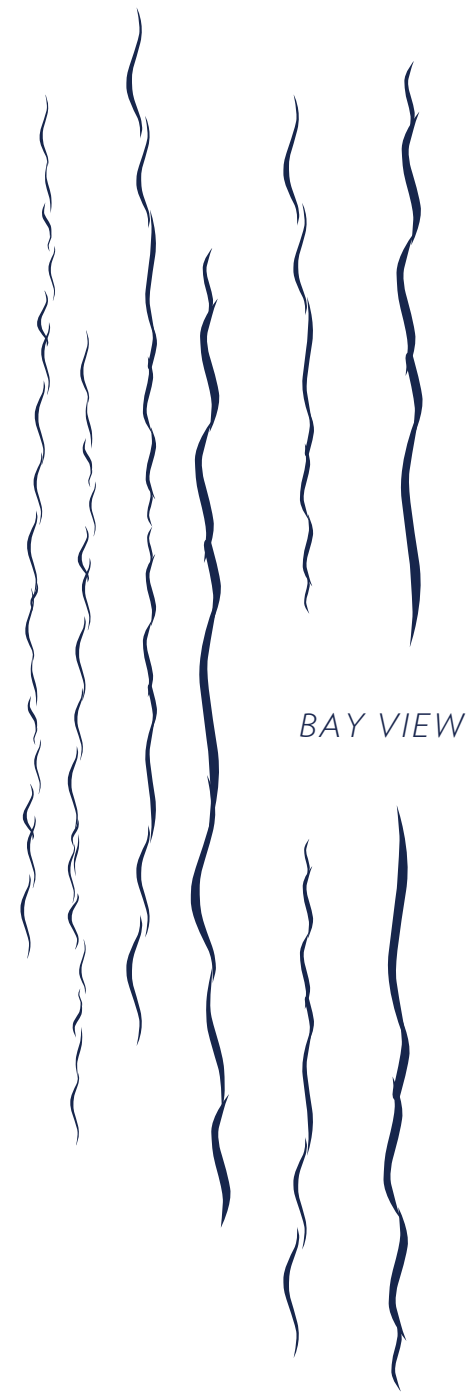
BEDROOMS WITH EN SUITE BATHROOMS

CHEF'S KITCHEN WITH ISLAND, WOLF & SUBZERO APPLIANCES

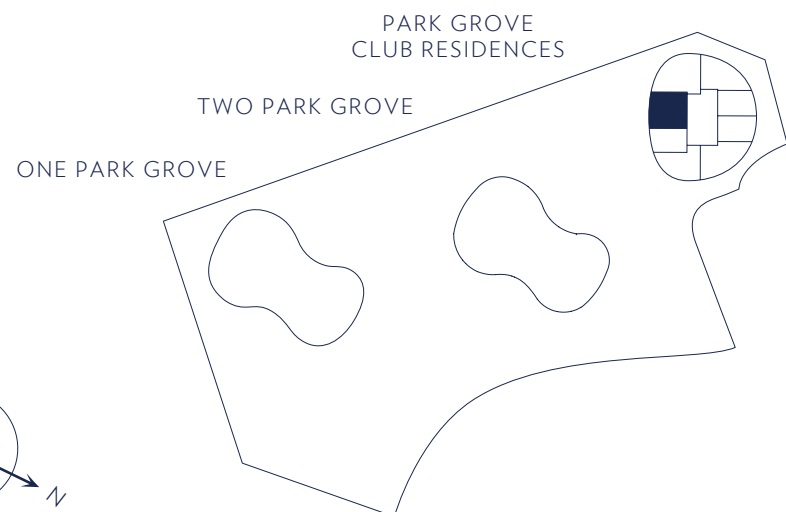
KITCHENS & BATHS DESIGNED BY WILLIAM SOFIELD

Stated dimensions are measured to the exterior boundaries of the exterior walls and the centerline of interior demising walls and in fact vary from the dimensions that would be determined by using the description and definition of the "Unit" set forth in the Declaration (which generally only includes the interior airspace between the perimeter walls and excludes interior structural components). Note that measurements of rooms set forth on this floor plan are generally taken at the greatest points of each given room (as if the room were a perfect rectangle), without regard for any cutouts. Accordingly, the area of the actual room will typically be smaller than the product obtained by multiplying the stated length times width. All dimensions are approximate and may vary with actual construction, and all floor plans and development plans are subject to change.

# RESIDENCE TWO



BAY VIEW



BAY VIEW



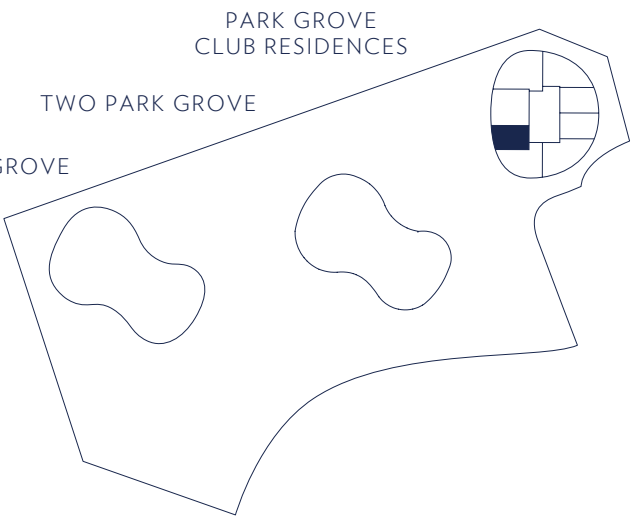
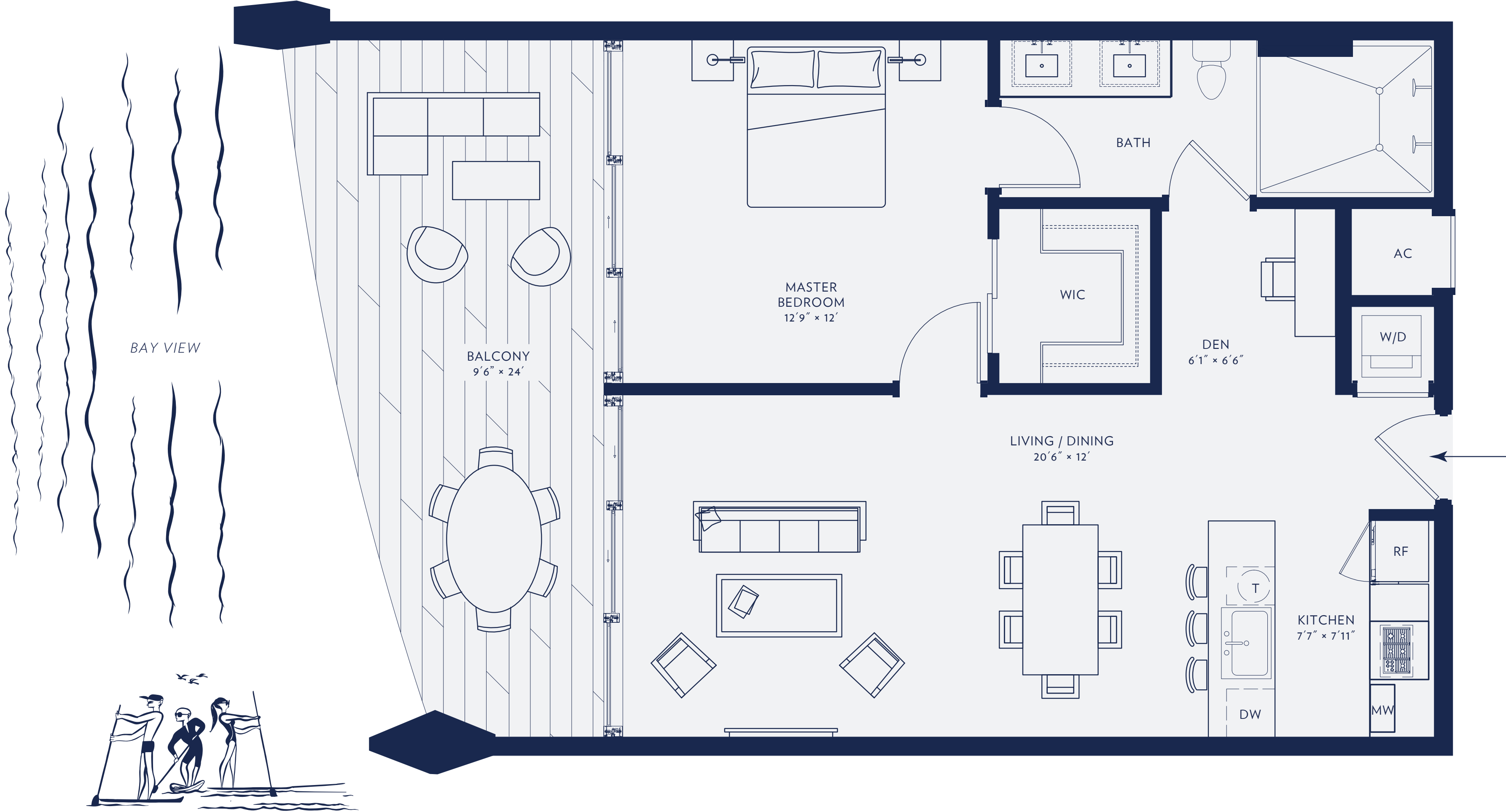
2 BEDROOMS WITH DEN  
2 BATHROOMS  
1,117 SQ FT · 104 SQ M INTERIOR  
415 SQ FT · 39 SQ M EXTERIOR  
1,532 SQ FT · 143 SQ M TOTAL

10 FOOT FLOOR TO CEILING GLASS OVERLOOKING BISCAYNE BAY  
PRIVATE WATERFRONT TERRACES  
EXPANSIVE DINING & ENTERTAINING AREAS  
PRIVATE CORNER MASTER BEDROOM WITH WALK-IN CLOSET

HIS & HERS VANITIES  
BEDROOMS WITH EN SUITE BATHROOMS  
EAT-IN CHEF'S KITCHEN WITH ISLAND, WOLF & SUBZERO APPLIANCES  
KITCHENS & BATHS DESIGNED BY WILLIAM SOFIELD

Stated dimensions are measured to the exterior boundaries of the exterior walls and the centerline of interior demising walls, and in fact vary from the dimensions that would be determined by using the description and definition of the "Unit" set forth in the Declaration (which generally only includes the interior airspace between the perimeter walls and excludes interior structural components). Note that measurements of rooms set forth on this floor plan are generally taken at the greatest points of each given room (as if the room were a perfect rectangle), without regard for any cutouts. Accordingly, the area of the actual room will typically be smaller than the product obtained by multiplying the stated length times width. All dimensions are approximate and may vary with actual construction, and all floor plans and development plans are subject to change.

# RESIDENCE THREE



1 BEDROOM WITH DEN  
 1 BATHROOM  
 747 SQ\_FT · 69 SQ\_M INTERIOR  
 226 SQ\_FT · 21 SQ\_M EXTERIOR  
 973 SQ\_FT · 90 SQ\_M TOTAL

10 FOOT FLOOR TO CEILING GLASS OVERLOOKING BISCAYNE BAY  
 PRIVATE WATERFRONT TERRACES  
 EXPANSIVE DINING & ENTERTAINING AREAS  
 PRIVATE MASTER BEDROOM WITH WALK-IN CLOSET

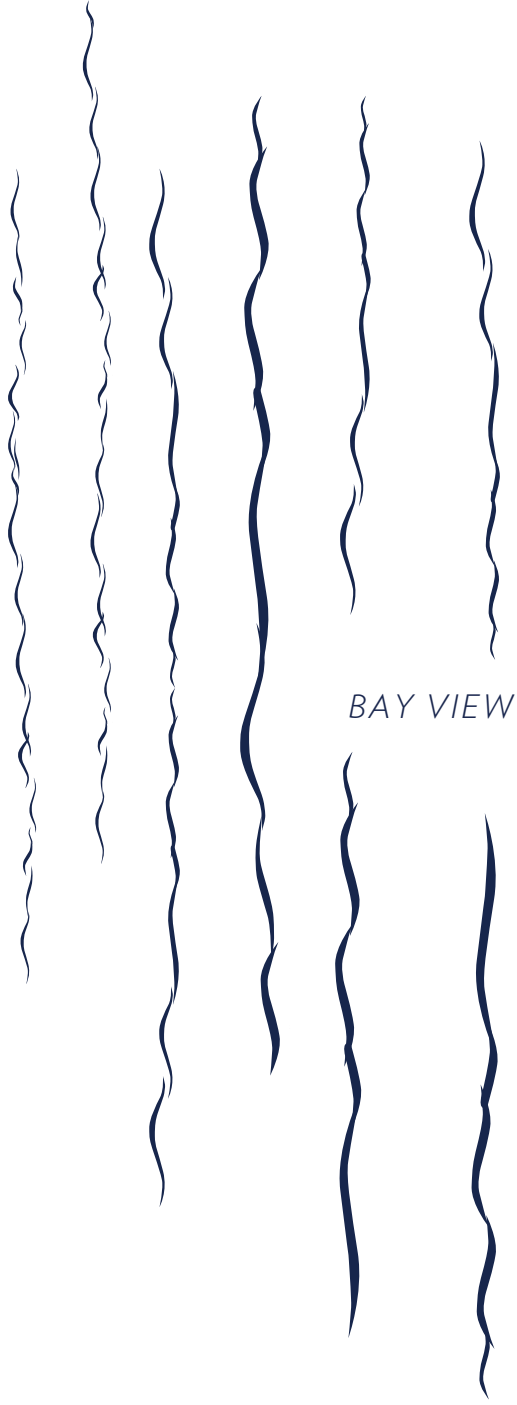
HIS & HERS VANITIES  
 BEDROOMS WITH EN SUITE BATHROOMS  
 CHEF'S KITCHEN WITH ISLAND, WOLF & SUBZERO APPLIANCES  
 KITCHENS & BATHS DESIGNED BY WILLIAM SOFIELD



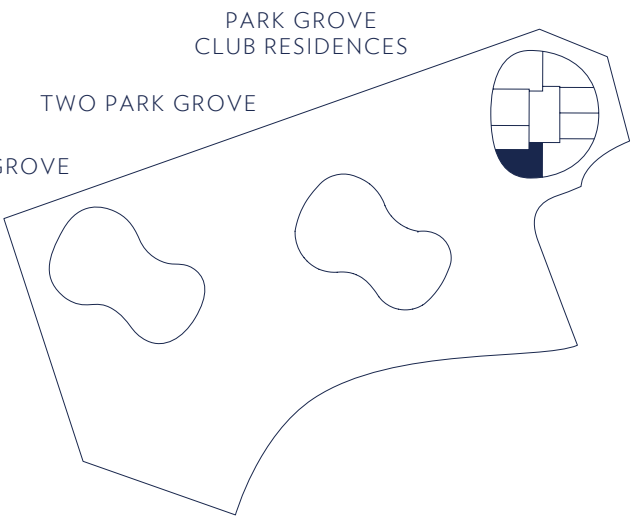
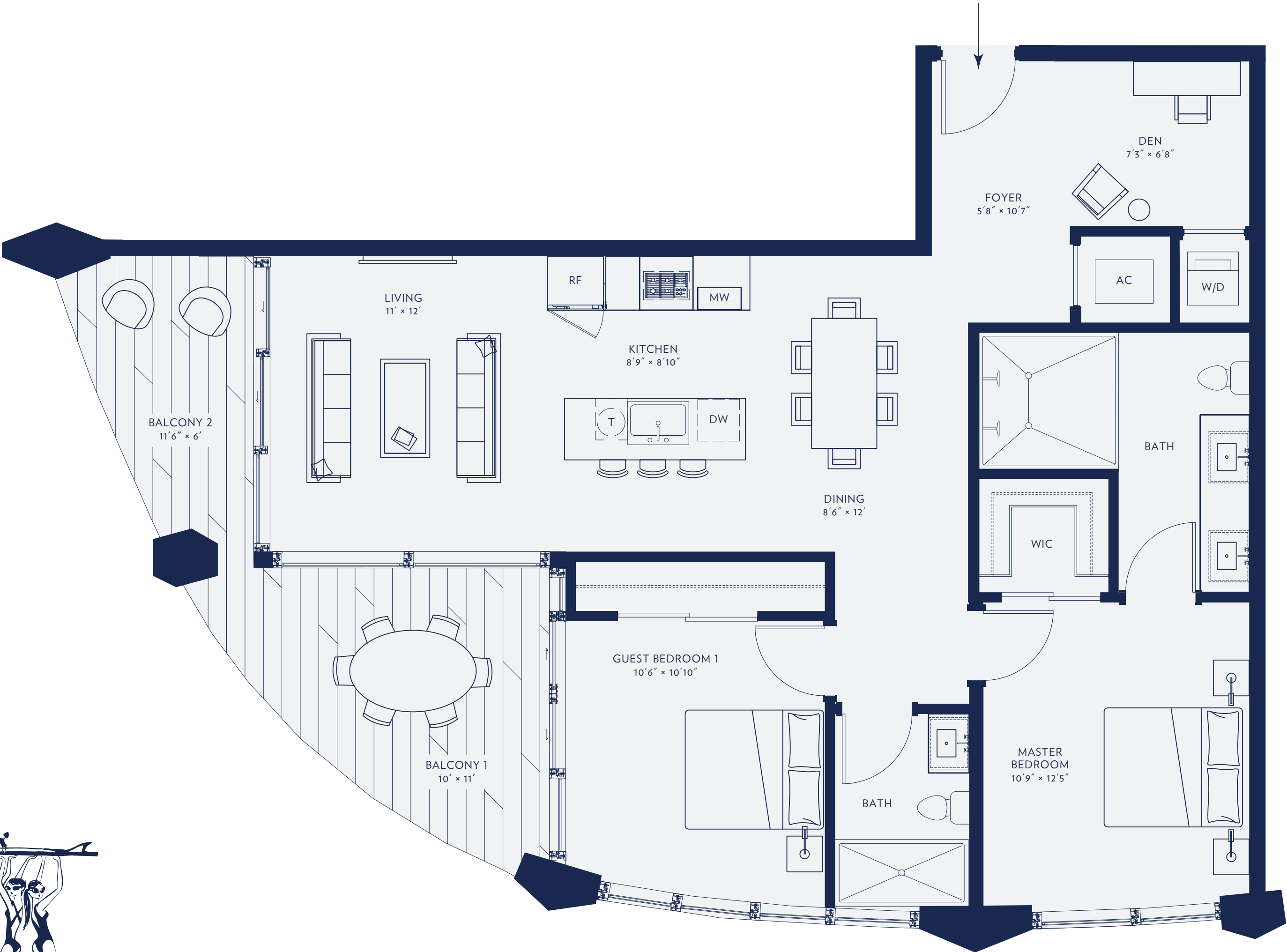
Stated dimensions are measured to the exterior boundaries of the exterior walls and the centerline of interior demising walls and in fact vary from the dimensions that would be determined by using the description and definition of the "Unit" set forth in the Declaration (which generally only includes the interior airspace between the perimeter walls and excludes interior structural components). Note that measurements of rooms set forth on this floor plan are generally taken at the greatest points of each given room (as if the room were a perfect rectangle), without regard for any cutouts. Accordingly, the area of the actual room will typically be smaller than the product obtained by multiplying the stated length times width. All dimensions are approximate and may vary with actual construction, and all floor plans and development plans are subject to change.



# RESIDENCE FOUR



BAY VIEW



2 BEDROOMS WITH DEN  
 2 BATHROOMS  
 1,059 SQ FT · 98 SQ M INTERIOR  
 190 SQ FT · 18 SQ M EXTERIOR  
 1,249 SQ FT · 116 SQ M TOTAL

- 10 FOOT FLOOR TO CEILING GLASS OVERLOOKING BISCAYNE BAY
- PRIVATE WATERFRONT TERRACES
- EXPANSIVE DINING & ENTERTAINING AREAS
- PRIVATE MASTER BEDROOM WITH WALK-IN CLOSET
- HIS & HERS VANITIES
- BEDROOMS WITH EN SUITE BATHROOMS
- CHEF'S KITCHEN WITH ISLAND, WOLF & SUBZERO APPLIANCES
- KITCHENS & BATHS DESIGNED BY WILLIAM SOFIELD

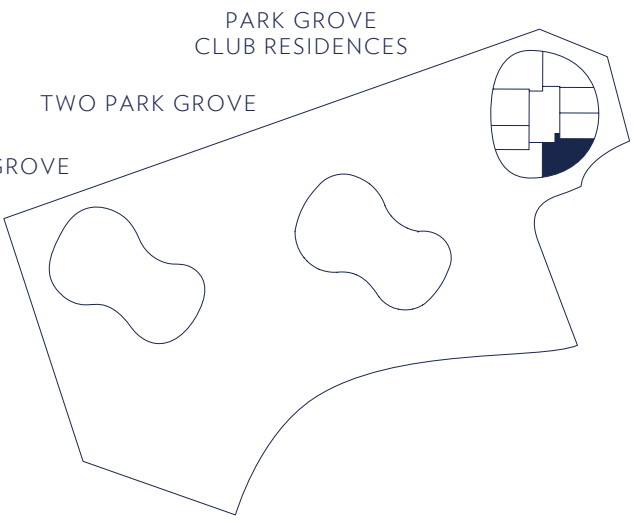
Stated dimensions are measured to the exterior boundaries of the exterior walls and the centerline of interior demising walls and in fact vary from the dimensions that would be determined by using the description and definition of the "Unit" set forth in the Declaration (which generally only includes the interior airspace between the perimeter walls and excludes interior structural components). Note that measurements of rooms set forth on this floor plan are generally taken at the greatest points of each given room (as if the room were a perfect rectangle), without regard for any cutouts. Accordingly, the area of the actual room will typically be smaller than the product obtained by multiplying the stated length times width. All dimensions are approximate and may vary with actual construction, and all floor plans and development plans are subject to change.



# RESIDENCE FIVE



GROVE VIEW



2 BEDROOMS WITH DEN  
 2 BATHROOMS  
 1,306 SQ FT · 121 SQ M INTERIOR  
 138 SQ FT · 13 SQ M EXTERIOR  
 1,444 SQ FT · 134 SQ M TOTAL

- 10 FOOT FLOOR TO CEILING GLASS OVER LOOKING COCONUT GROVE
- PRIVATE WATERFRONT TERRACES
- EXPANSIVE DINING & ENTERTAINING AREAS
- PRIVATE MASTER BEDROOM WITH WALK-IN CLOSET
- HIS & HERS VANITIES
- BEDROOMS WITH EN SUITE BATHROOMS
- CHEF'S KITCHEN WITH ISLAND, WOLF & SUBZERO APPLIANCES
- KITCHENS & BATHS DESIGNED BY WILLIAM SOFIELD



Stated dimensions are measured to the exterior boundaries of the exterior walls and the centerline of interior demising walls and in fact vary from the dimensions that would be determined by using the description and definition of the "Unit" set forth in the Declaration (which generally only includes the interior airspace between the perimeter walls and excludes interior structural components). Note that measurements of rooms set forth on this floor plan are generally taken at the greatest points of each given room (as if the room were a perfect rectangle), without regard for any cutouts. Accordingly, the area of the actual room will typically be smaller than the product obtained by multiplying the stated length times width. All dimensions are approximate and may vary with actual construction, and all floor plans and development plans are subject to change.

# RESIDENCE SIX



1 BEDROOM WITH DEN  
1 BATHROOM

759 SQ FT · 71 SQ M INTERIOR  
220 SQ FT · 20 SQ M EXTERIOR  
979 SQ FT · 91 SQ M TOTAL

10 FOOT FLOOR TO CEILING GLASS OVER LOOKING COCONUT GROVE

PRIVATE WATERFRONT TERRACES

EXPANSIVE DINING & ENTERTAINING AREAS

PRIVATE CORNER MASTER BEDROOM WITH WALK-IN CLOSET

HIS & HERS VANITIES

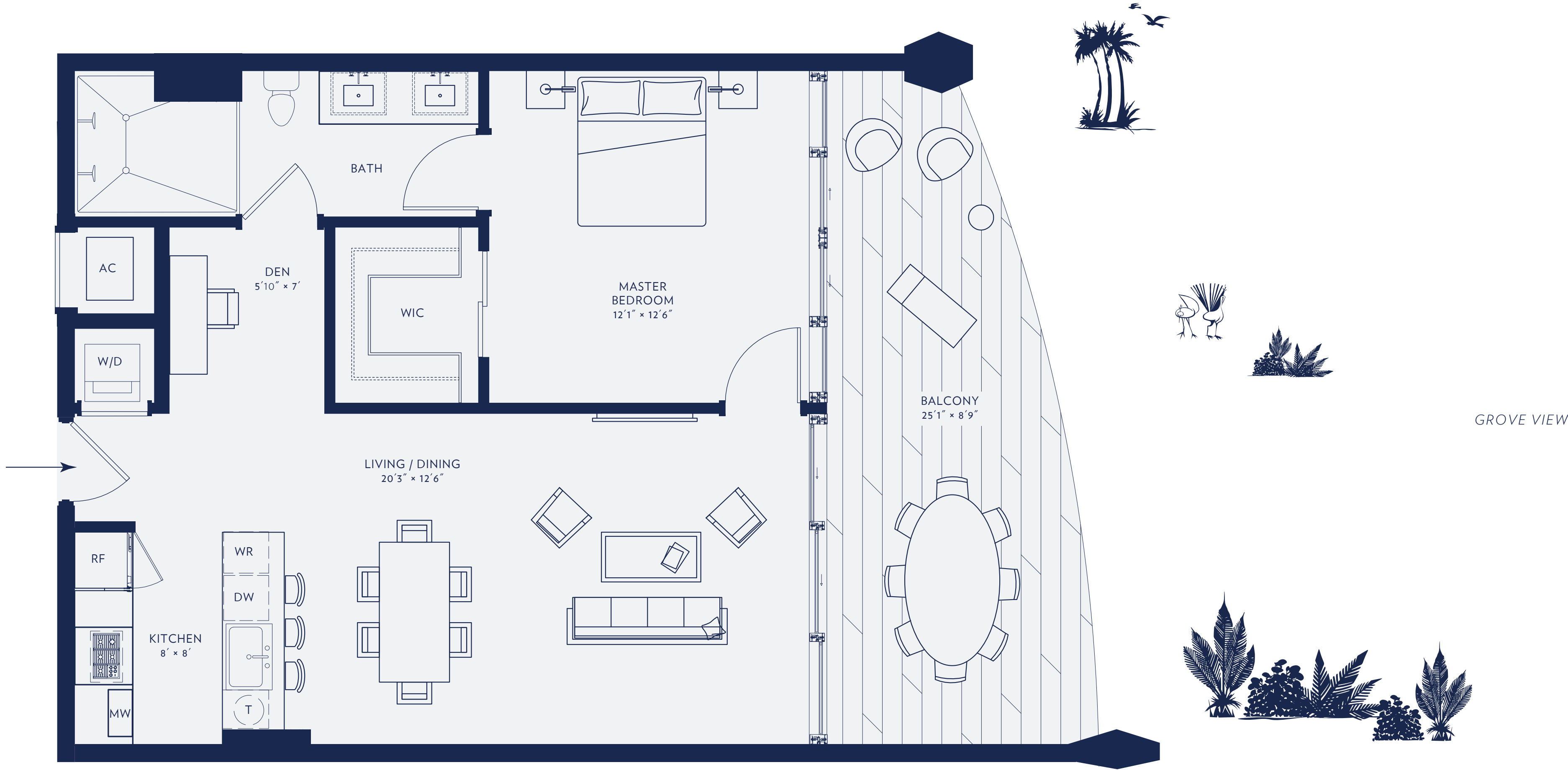
BEDROOMS WITH EN SUITE BATHROOMS

EAT-IN CHEF'S KITCHEN WITH ISLAND, WOLF & SUBZERO APPLIANCES

KITCHENS & BATHS DESIGNED BY WILLIAM SOFIELD

Stated dimensions are measured to the exterior boundaries of the exterior walls and the centerline of interior demising walls and in fact vary from the dimensions that would be determined by using the description and definition of the "Unit" set forth in the Declaration (which generally only includes the interior airspace between the perimeter walls and excludes interior structural components). Note that measurements of rooms set forth on this floor plan are generally taken at the greatest points of each given room (as if the room were a perfect rectangle), without regard for any cutouts. Accordingly, the area of the actual room will typically be smaller than the product obtained by multiplying the stated length times width. All dimensions are approximate and may vary with actual construction, and all floor plans and development plans are subject to change.

# RESIDENCE SEVEN



1 BEDROOM WITH DEN  
 1 BATHROOM  
 760 SQ FT · 71 SQ M INTERIOR  
 210 SQ FT · 20 SQ M EXTERIOR  
 970 SQ FT · 91 SQ M TOTAL

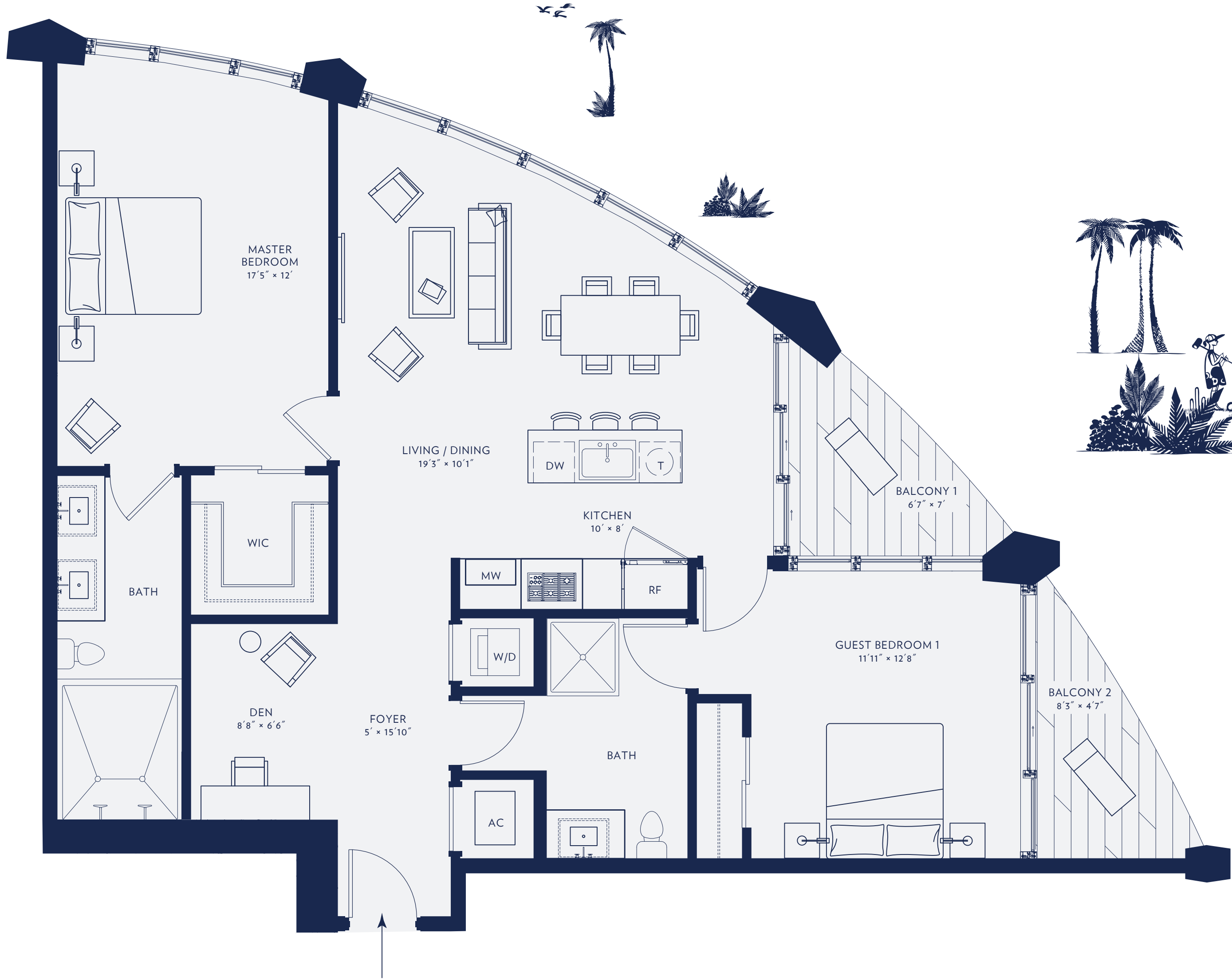
10 FOOT FLOOR TO CEILING GLASS OVER LOOKING COCONUT GROVE  
 PRIVATE WATERFRONT TERRACES  
 EXPANSIVE DINING & ENTERTAINING AREAS  
 PRIVATE MASTER BEDROOM WITH WALK-IN CLOSET

HIS & HERS VANITIES  
 BEDROOMS WITH EN SUITE BATHROOMS  
 CHEF'S KITCHEN WITH ISLAND, WOLF & SUBZERO APPLIANCES  
 KITCHENS & BATHS DESIGNED BY WILLIAM SOFIELD

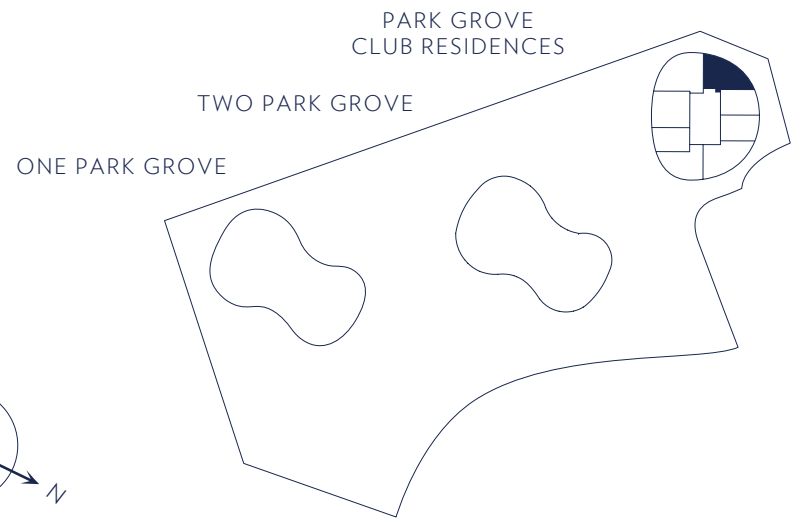
Stated dimensions are measured to the exterior boundaries of the exterior walls and the centerline of interior demising walls and in fact vary from the dimensions that would be determined by using the description and definition of the "Unit" set forth in the Declaration (which generally only includes the interior airspace between the perimeter walls and excludes interior structural components). Note that measurements of rooms set forth on this floor plan are generally taken at the greatest points of each given room (as if the room were a perfect rectangle), without regard for any cutouts. Accordingly, the area of the actual room will typically be smaller than the product obtained by multiplying the stated length times width. All dimensions are approximate and may vary with actual construction, and all floor plans and development plans are subject to change.



# RESIDENCE EIGHT



GROVE VIEW



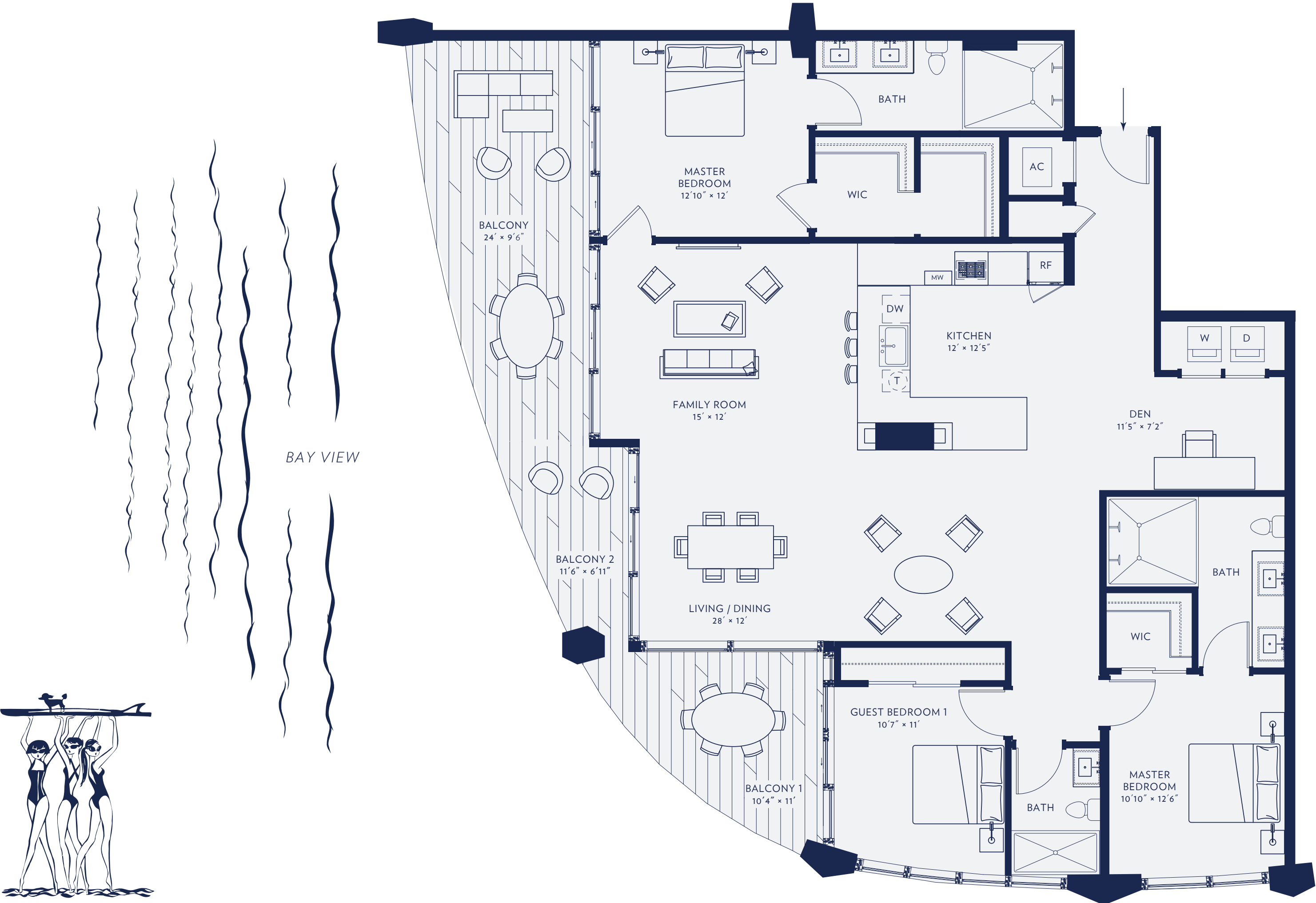
2 BEDROOMS WITH DEN  
 2 BATHROOMS  
 1,231 SQ FT . 114 SQ M INTERIOR  
 124 SQ FT . 12 SQ M EXTERIOR  
 1,355 SQ FT . 126 SQ M TOTAL

10 FOOT FLOOR TO CEILING GLASS OVERLOOKING COCONUT GROVE  
 PRIVATE WATERFRONT TERRACES  
 EXPANSIVE DINING & ENTERTAINING AREAS  
 PRIVATE CORNER MASTER BEDROOM WITH WALK-IN CLOSET

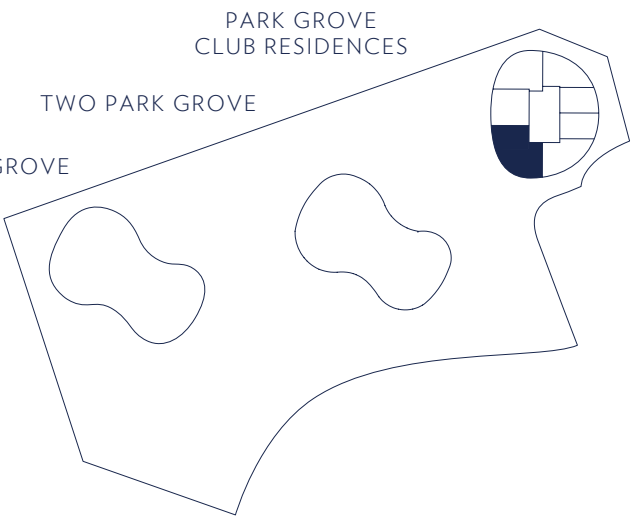
HIS & HERS VANITIES  
 BEDROOMS WITH EN SUITE BATHROOMS  
 EAT-IN CHEF'S KITCHEN WITH ISLAND, WOLF & SUBZERO APPLIANCES  
 KITCHENS & BATHS DESIGNED BY WILLIAM SOFIELD

Stated dimensions are measured to the exterior boundaries of the exterior walls and the centerline of interior demising walls, and in fact vary from the dimensions that would be determined by using the description and definition of the "Unit" set forth in the Declaration (which generally only includes the interior airspace between the perimeter walls and excludes interior structural components). Note that measurements of rooms set forth on this floor plan are generally taken at the greatest points of each given room (as if the room were a perfect rectangle), without regard for any cutouts. Accordingly, the area of the actual room will typically be smaller than the product obtained by multiplying the stated length times width. All dimensions are approximate and may vary with actual construction, and all floor plans and development plans are subject to change.

# RESIDENCES THREE & FOUR COMBINED



BAY VIEW



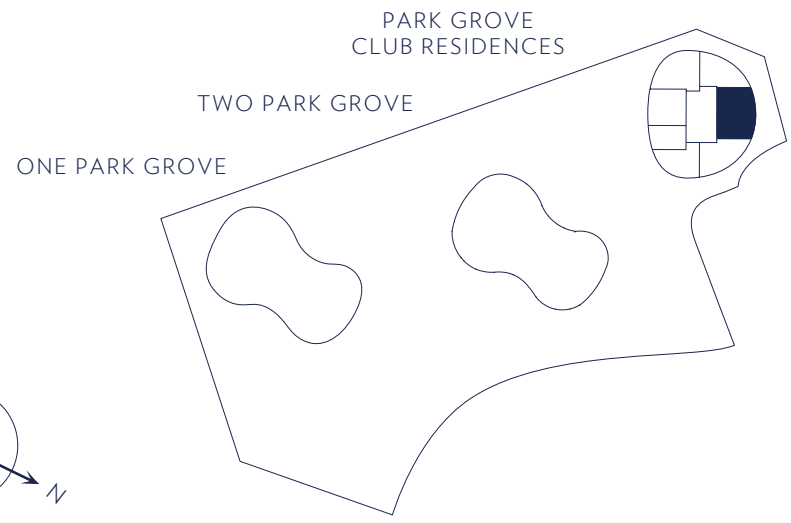
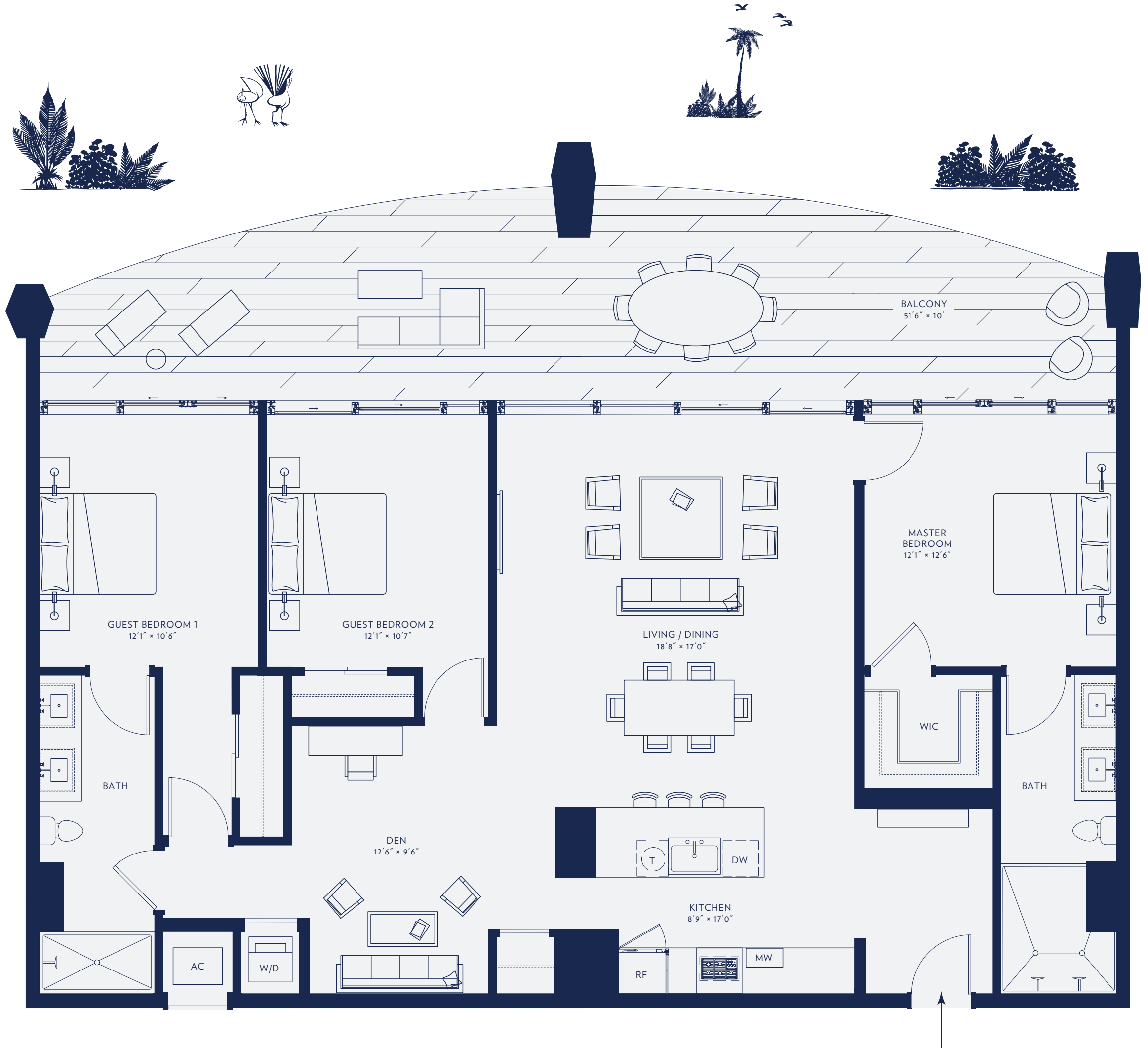
3 BEDROOMS WITH DEN  
3 BATHROOMS  
1,886 SQ FT · 175 SQ M INTERIOR  
410 SQ FT · 38 SQ M EXTERIOR  
2,296 SQ FT · 213 SQ M TOTAL

10 FOOT FLOOR TO CEILING GLASS OVER LOOKING COCONUT GROVE  
PRIVATE WATERFRONT TERRACES  
EXPANSIVE DINING & ENTERTAINING AREAS  
PRIVATE CORNER MASTER BEDROOM WITH WALK-IN CLOSET

HIS & HERS VANITIES  
BEDROOMS WITH EN SUITE BATHROOMS  
EAT-IN CHEF'S KITCHEN WITH ISLAND, WOLF & SUBZERO APPLIANCES  
KITCHENS & BATHS DESIGNED BY WILLIAM SOFIELD

Stated dimensions are measured to the exterior boundaries of the exterior walls and the centerline of interior demising walls and in fact vary from the dimensions that would be determined by using the description and definition of the "Unit" set forth in the Declaration (which generally only includes the interior airspace between the perimeter walls and excludes interior structural components). Note that measurements of rooms set forth on this floor plan are generally taken at the greatest points of each given room (as if the room were a perfect rectangle), without regard for any cutouts. Accordingly, the area of the actual room will typically be smaller than the product obtained by multiplying the stated length times width. All dimensions are approximate and may vary with actual construction, and all floor plans and development plans are subject to change.

# RESIDENCES SIX & SEVEN COMBINED



3 BEDROOMS WITH DEN  
2 BATHROOMS  
1,520 SQ FT · 141 SQ M INTERIOR  
438 SQ FT · 41 SQ M EXTERIOR  
1,958 SQ FT · 182 SQ M TOTAL

10 FOOT FLOOR TO CEILING GLASS OVER LOOKING COCONUT GROVE  
PRIVATE WATERFRONT TERRACES  
EXPANSIVE DINING & ENTERTAINING AREAS  
PRIVATE CORNER MASTER BEDROOM WITH WALK-IN CLOSET

HIS & HERS VANITIES  
BEDROOMS WITH EN SUITE BATHROOMS  
EAT-IN CHEF'S KITCHEN WITH ISLAND, WOLF & SUBZERO APPLIANCES  
KITCHENS & BATHS DESIGNED BY WILLIAM SOFIELD

Stated dimensions are measured to the exterior boundaries of the exterior walls and the centerline of interior demising walls, and in fact vary from the dimensions that would be determined by using the description and definition of the "Unit" set forth in the Declaration (which generally only includes the interior airspace between the perimeter walls and excludes interior structural components). Note that measurements of rooms set forth on this floor plan are generally taken at the greatest points of each given room (as if the room were a perfect rectangle), without regard for any cutouts. Accordingly, the area of the actual room will typically be smaller than the product obtained by multiplying the stated length times width. All dimensions are approximate and may vary with actual construction, and all floor plans and development plans are subject to change.