

VB

VILLA BILTMORE



A NEW LEVEL *of* LUXURY

Building Amenities & Residence Features

- Classic Mediterranean design, Two 3-story buildings reinforced concrete construction with textured stucco finish.
- Only one or two - three or four bedroom residences per floor.
- Private balconies and terraces accessible from living rooms and bedrooms with architecturally located decorative rails.
- 8' and 10' high reinforced sliding glass exterior doors with high energy efficient tinted glass.
- Elevators, computer-keyed to open in your private residential foyer.
- Private underground garage.
- Lushly landscaped entrance.
- Trash disposal system on each floor.
- Outdoor pool/spa and sun deck.

Kitchen

- Designer cabinets with spacious pantry.
- Counter-tops with back splash.
- Variable speed range hood.
- Electric cook top with radiant elements.
- Electric conventional and microwave ovens, with fully programmable cooking cycles.
- 42" refrigerator/freezer with automatic ice maker and matching wood cabinet panels.
- 24" dishwasher with three wash levels.
- ½ HP heavy duty food waste disposer.
- Stainless steel sink.
- Polished chrome single-lever faucet with pull-out spray.
- Built-in wine cooler and coffee maker.

Master Bathrooms

- Imported marble floor and wet area matching marble vanity tops.
- Imported marble shower with built-in seat, and glass shower enclosure.
- Vanity cabinets featuring lacquered high-gloss doors.
- Free-standing deep soaking tub.
- Toilet with elongated bowl, white.
- Custom designed sinks.
- Faucets and shower heads with chrome finish.
- Full-length vanity mirror.

Secondary Bathrooms

- Imported floors and vanity tops.
- Vanity cabinets featuring lacquered, high-gloss, white doors
- Toilet with elongated bowl, white.
- China lavatory, white.
- Faucets and shower heads with chrome finish.
- Full-length vanity mirror.

Powder Room

- Imported marble floor.
- Toilet with elongated bowl, white.
- China lavatory, white.
- Faucets with chrome finish.

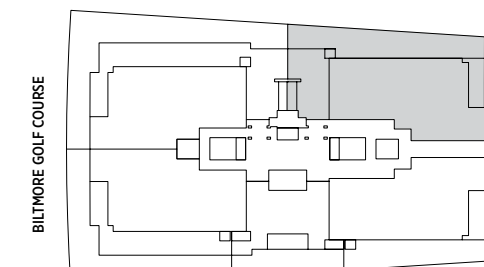
Laundry Room

- Three speed washer, white.
- Electric dryer, white.
- White, molded polypropylene laundry tub with chrome faucet

Other Interior Details

- Smooth finished ceilings, 10' high except for certain drops to accommodate mechanical installations, with two coats of flat white paint.
- Smooth drywall finished walls with one coat of primer.
- 8' high interior solid wood doors, with two coats of semi-gloss white enamel paint.
- Luxury lever sets.
- High energy efficient, central air conditioning system.
- High energy efficient water heater with quick recovery and recirculating pump.
- Telephone, Internet, and cable television outlets throughout.
- Fire sprinklers, smoke alarms, and state-of-the-art security system providing audio contact with building's front desk.

RESIDENCE 101

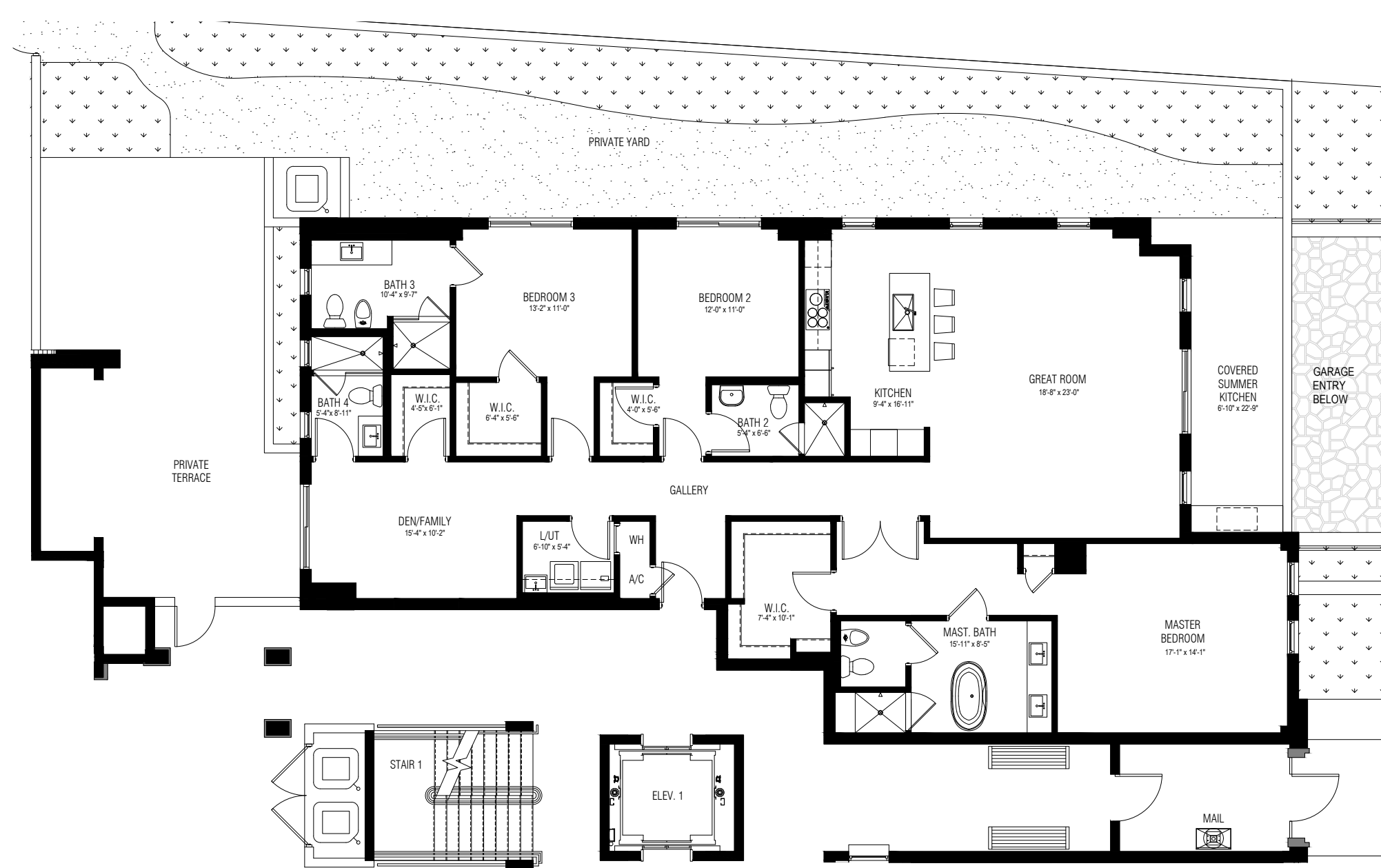


Interior and Covered Summer Kitchen
2,546 S.F.
236.53 M2

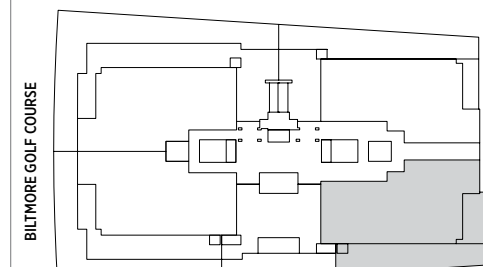
Private Terraces
655 S.F.
60.85 M2

Private Yard
1,128 S.F.
104.79 M2

TOTAL: 4,329 S.F.



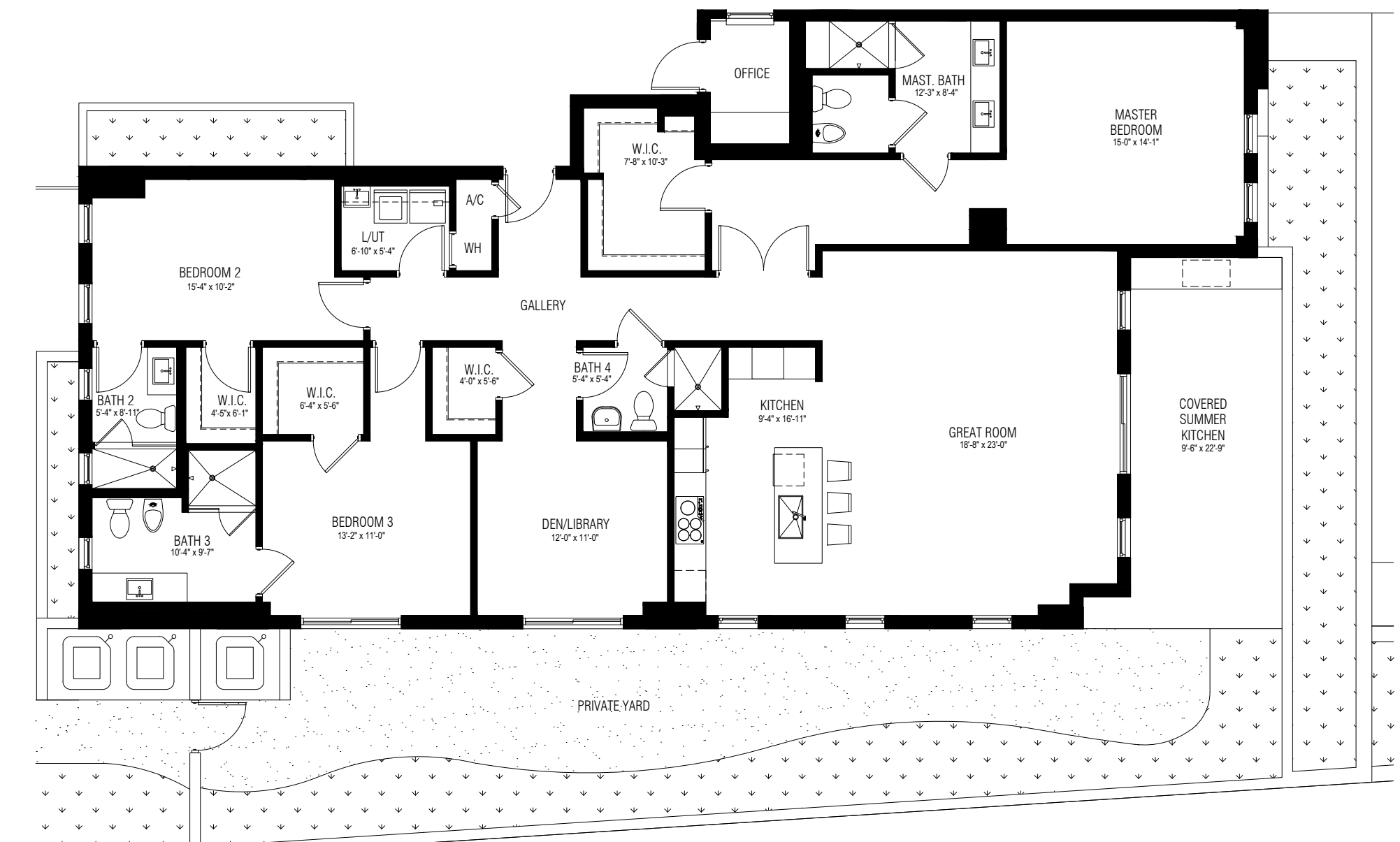
RESIDENCE 102



Interior and Covered Summer Kitchen
2,555 S.F.
237.37 M2

Private Yard
820 S.F.
76.18 M2

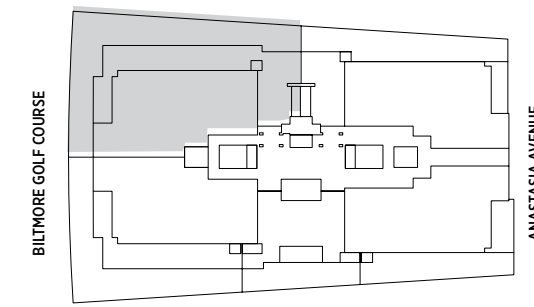
TOTAL: 3,375 S.F.



Oral representations cannot be relied upon as correctly stating representations of the developer. For correct representations, make reference to this brochure and to the documents required by section 718.503, Florida statutes, to be furnished by a developer to a buyer or lessee. The sketches, renderings, pictures and illustrations are proposed only and the developer reserves the right to modify, revise or withdraw any or all of the same at its sole discretion without notice, including amenities, features and specifications. Any furniture, appliances, or decorator items depicted herein are shown for artistic and illustrative purposes only and are not included in the purchase and sale of the residence. Stated dimensions are measured to the exterior boundaries of the exterior walls and the centerline of interior demising walls and therefore, the stated square footage of the units may vary from the square footage that would be determined by using the description of the "unit" set forth in the declaration.

Oral representations cannot be relied upon as correctly stating representations of the developer. For correct representations, make reference to this brochure and to the documents required by section 718.503, Florida statutes, to be furnished by a developer to a buyer or lessee. The sketches, renderings, pictures and illustrations are proposed only and the developer reserves the right to modify, revise or withdraw any or all of the same at its sole discretion without notice, including amenities, features and specifications. Any furniture, appliances, or decorator items depicted herein are shown for artistic and illustrative purposes only and are not included in the purchase and sale of the residence. Stated dimensions are measured to the exterior boundaries of the exterior walls and the centerline of interior demising walls and therefore, the stated square footage of the units may vary from the square footage that would be determined by using the description of the "unit" set forth in the declaration.

RESIDENCE 103

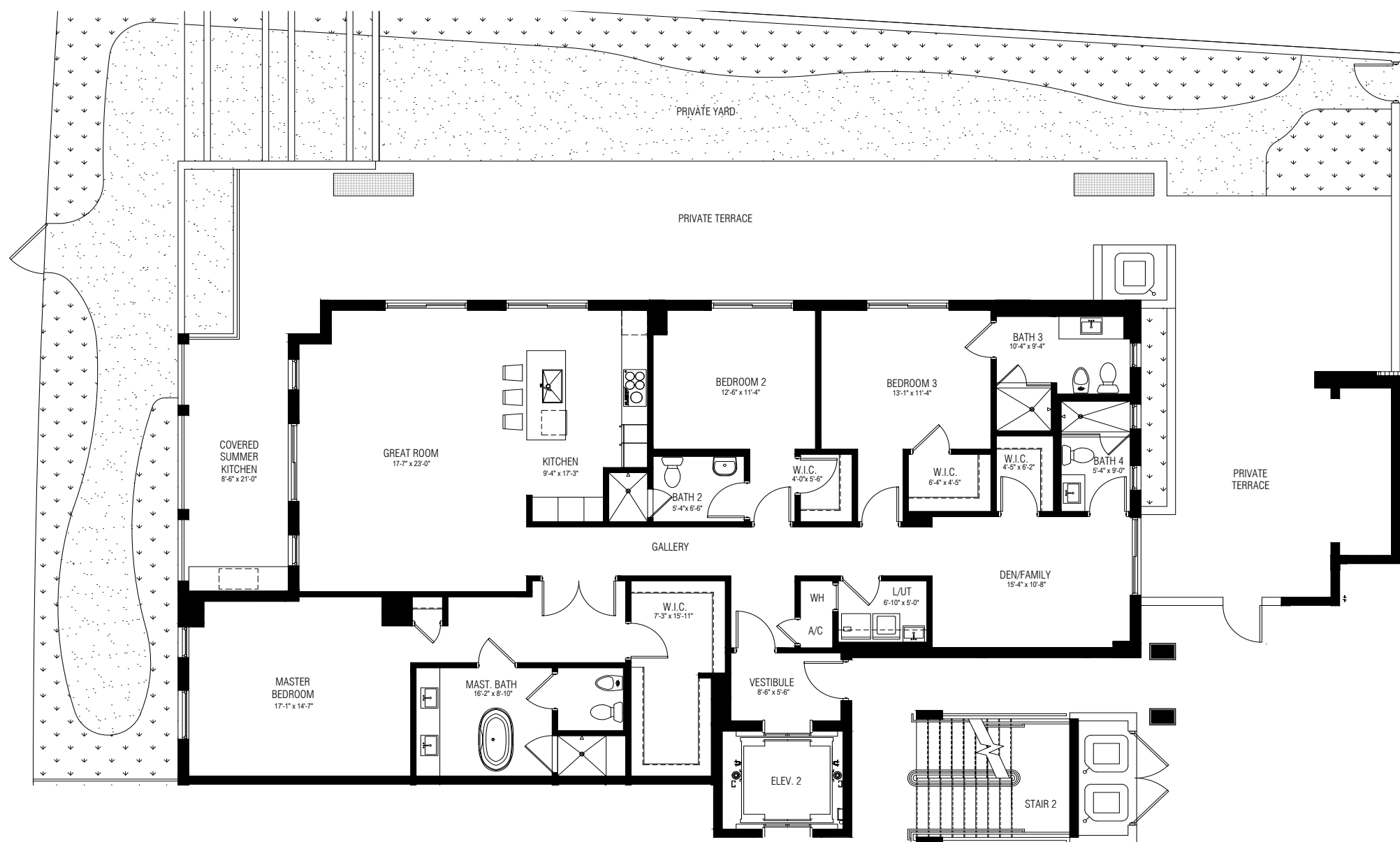


Interior and Covered Summer Kitchen
2,553 S.F.
237.18 M2

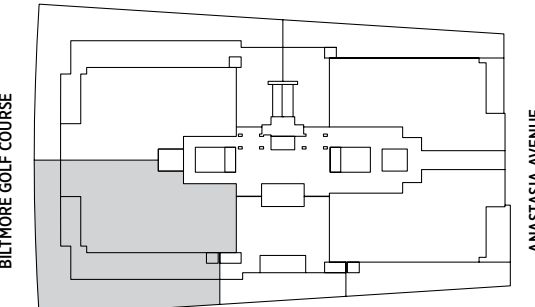
Private Terraces
1,457 S.F.
135.36 M2

Private Yard
1,914 S.F.
177.82 M2

TOTAL: 5,924 S.F.



RESIDENCE 104

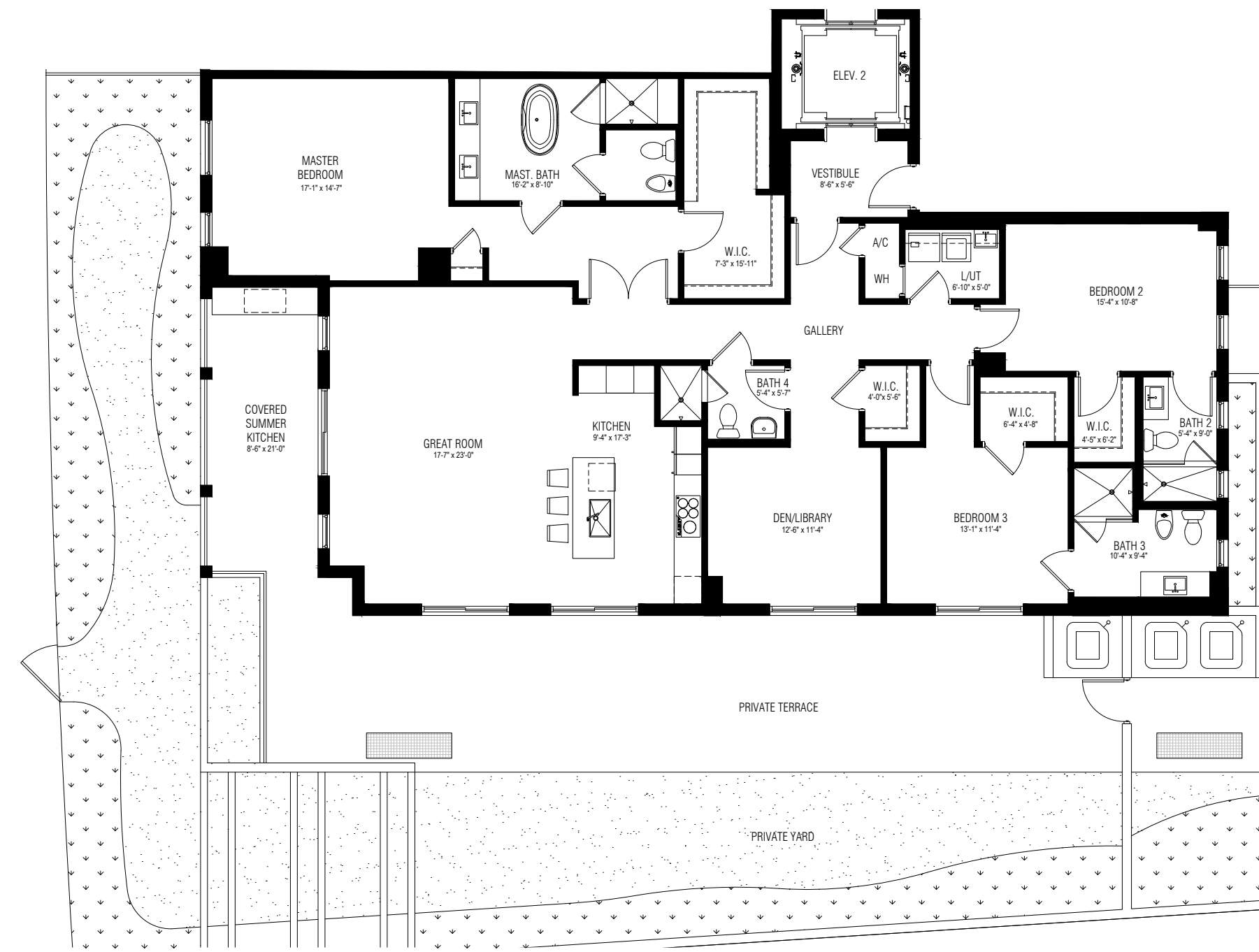


Interior and Covered Summer Kitchen
2,553 S.F.
237.18 M2

Private Terraces
729 S.F.
67.73 M2

Private Yard
1,602 S.F.
148.83 M2

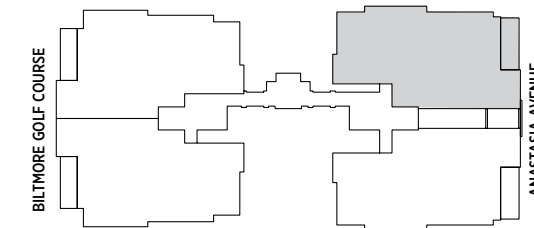
TOTAL: 4,884 S.F.



Oral representations cannot be relied upon as correctly stating representations of the developer. For correct representations, make reference to this brochure and to the documents required by section 718.503, Florida statutes, to be furnished by a developer to a buyer or lessee. The sketches, renderings, pictures and illustrations are proposed only and the developer reserves the right to modify, revise or withdraw any or all of the same at its sole discretion without notice, including amenities, features and specifications. Any furniture, appliances, or decorator items depicted herein are shown for artistic and illustrative purposes only and are not included in the purchase and sale of the residence. Stated dimensions are measured to the exterior boundaries of the exterior walls and the centerline of interior demising walls and therefore, the stated square footage of the units may vary from the square footage that would be determined by using the description of the "unit" set forth in the declaration.

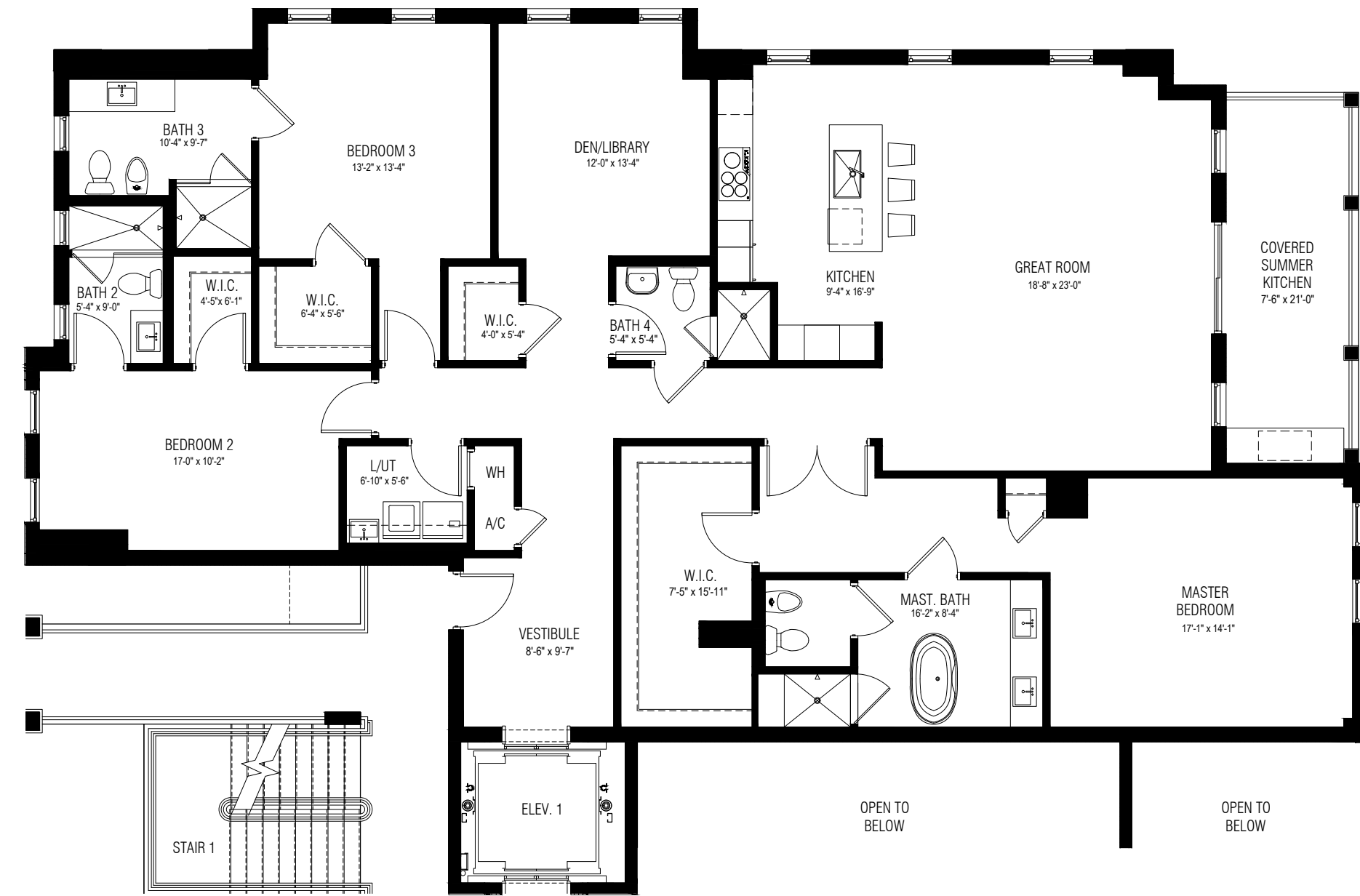
Oral representations cannot be relied upon as correctly stating representations of the developer. For correct representations, make reference to this brochure and to the documents required by section 718.503, Florida statutes, to be furnished by a developer to a buyer or lessee. The sketches, renderings, pictures and illustrations are proposed only and the developer reserves the right to modify, revise or withdraw any or all of the same at its sole discretion without notice, including amenities, features and specifications. Any furniture, appliances, or decorator items depicted herein are shown for artistic and illustrative purposes only and are not included in the purchase and sale of the residence. Stated dimensions are measured to the exterior boundaries of the exterior walls and the centerline of interior demising walls and therefore, the stated square footage of the units may vary from the square footage that would be determined by using the description of the "unit" set forth in the declaration.

RESIDENCE 201

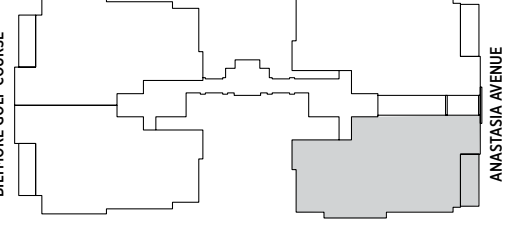


Interior and Covered Summer Kitchen
2,728 S.F.
253.44 M2

TOTAL: 2,728 S.F.



RESIDENCE 202



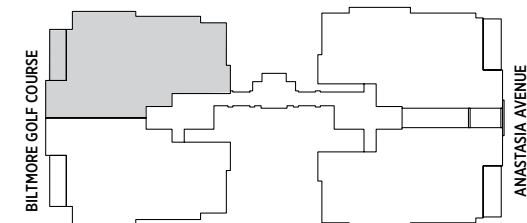
Interior and Covered Summer Kitchen
2,728 S.F.
253.44 M2

TOTAL: 2,728 S.F.

Oral representations cannot be relied upon as correctly stating representations of the developer. For correct representations, make reference to this brochure and to the documents required by section 718.503, Florida statutes, to be furnished by a developer to a buyer or lessee. The sketches, renderings, pictures and illustrations are proposed only and the developer reserves the right to modify, revise or withdraw any or all of the same at its sole discretion without notice, including amenities, features and specifications. Any furniture, appliances, or decorator items depicted herein are shown for artistic and illustrative purposes only and are not included in the purchase and sale of the residence. Stated dimensions are measured to the exterior boundaries of the exterior walls and the centerline of interior demising walls and therefore, the stated square footage of the units may vary from the square footage that would be determined by using the description of the "unit" set forth in the declaration.

Oral representations cannot be relied upon as correctly stating representations of the developer. For correct representations, make reference to this brochure and to the documents required by section 718.503, Florida statutes, to be furnished by a developer to a buyer or lessee. The sketches, renderings, pictures and illustrations are proposed only and the developer reserves the right to modify, revise or withdraw any or all of the same at its sole discretion without notice, including amenities, features and specifications. Any furniture, appliances, or decorator items depicted herein are shown for artistic and illustrative purposes only and are not included in the purchase and sale of the residence. Stated dimensions are measured to the exterior boundaries of the exterior walls and the centerline of interior demising walls and therefore, the stated square footage of the units may vary from the square footage that would be determined by using the description of the "unit" set forth in the declaration.

RESIDENCE 203

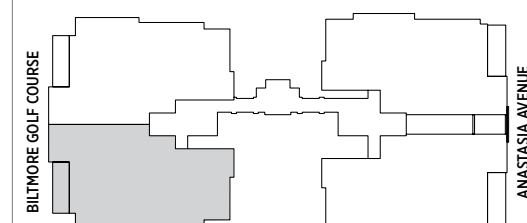


Interior and Covered Summer Kitchen
2,791 S.F.
259.29 M2

TOTAL: 2,791 S.F.



RESIDENCE 204



Interior and Covered Summer Kitchen
2,791 S.F.
259.29 M2

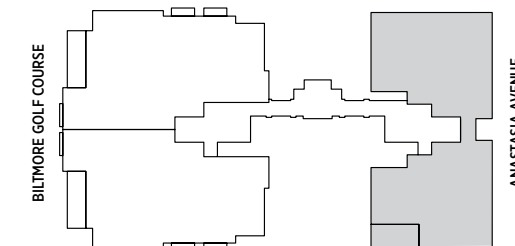
TOTAL: 2,791 S.F.



Oral representations cannot be relied upon as correctly stating representations of the developer. For correct representations, make reference to this brochure and to the documents required by section 718.503, Florida statutes, to be furnished by a developer to a buyer or lessee. The sketches, renderings, pictures and illustrations are proposed only and the developer reserves the right to modify, revise or withdraw any or all of the same at its sole discretion without notice, including amenities, features and specifications. Any furniture, appliances, or decorator items depicted herein are shown for artistic and illustrative purposes only and are not included in the purchase and sale of the residence. Stated dimensions are measured to the exterior boundaries of the exterior walls and the centerline of interior demising walls and therefore, the stated square footage of the units may vary from the square footage that would be determined by using the description of the "unit" set forth in the declaration.

Oral representations cannot be relied upon as correctly stating representations of the developer. For correct representations, make reference to this brochure and to the documents required by section 718.503, Florida statutes, to be furnished by a developer to a buyer or lessee. The sketches, renderings, pictures and illustrations are proposed only and the developer reserves the right to modify, revise or withdraw any or all of the same at its sole discretion without notice, including amenities, features and specifications. Any furniture, appliances, or decorator items depicted herein are shown for artistic and illustrative purposes only and are not included in the purchase and sale of the residence. Stated dimensions are measured to the exterior boundaries of the exterior walls and the centerline of interior demising walls and therefore, the stated square footage of the units may vary from the square footage that would be determined by using the description of the "unit" set forth in the declaration.

PENTHOUSE 301

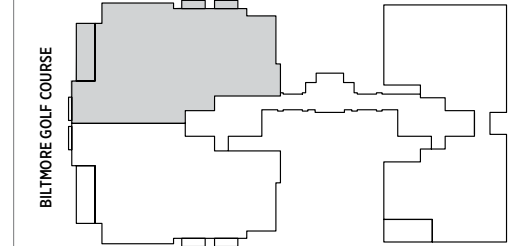


Interior and Covered Summer Kitchen
3,204 S.F.
297.66 M2

TOTAL: 3,204 S.F.



PENTHOUSE 303



Interior and Covered Summer Kitchen
2,791 S.F.
259.29 M2

Private Terraces
61 S.F.
5.67 M2

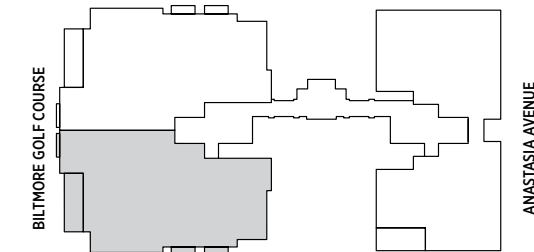
TOTAL: 2,852 S.F.



Oral representations cannot be relied upon as correctly stating representations of the developer. For correct representations, make reference to this brochure and to the documents required by section 718.503, Florida statutes, to be furnished by a developer to a buyer or lessee. The sketches, renderings, pictures and illustrations are proposed only and the developer reserves the right to modify, revise or withdraw any or all of the same at its sole discretion without notice, including amenities, features and specifications. Any furniture, appliances, or decorator items depicted herein are shown for artistic and illustrative purposes only and are not included in the purchase and sale of the residence. Stated dimensions are measured to the exterior boundaries of the exterior walls and the centerline of interior demising walls and therefore, the stated square footage of the units may vary from the square footage that would be determined by using the description of the "unit" set forth in the declaration.

Oral representations cannot be relied upon as correctly stating representations of the developer. For correct representations, make reference to this brochure and to the documents required by section 718.503, Florida statutes, to be furnished by a developer to a buyer or lessee. The sketches, renderings, pictures and illustrations are proposed only and the developer reserves the right to modify, revise or withdraw any or all of the same at its sole discretion without notice, including amenities, features and specifications. Any furniture, appliances, or decorator items depicted herein are shown for artistic and illustrative purposes only and are not included in the purchase and sale of the residence. Stated dimensions are measured to the exterior boundaries of the exterior walls and the centerline of interior demising walls and therefore, the stated square footage of the units may vary from the square footage that would be determined by using the description of the "unit" set forth in the declaration.

PENTHOUSE 304 GOLF FRONT



Interior and Covered Summer Kitchen
2,791 S.F.
259.29 M2

Private Terraces
61 S.F.
5.67 M2

TOTAL: 2,852 S.F.



Oral representations cannot be relied upon as correctly stating representations of the developer. For correct representations, make reference to this brochure and to the documents required by section 718.503, Florida statutes, to be furnished by a developer to a buyer or lessee. The sketches, renderings, pictures and illustrations are proposed only and the developer reserves the right to modify, revise or withdraw any or all of the same at its sole discretion without notice, including amenities, features and specifications. Any furniture, appliances, or decorator items depicted herein are shown for artistic and illustrative purposes only and are not included in the purchase and sale of the residence. Stated dimensions are measured to the exterior boundaries of the exterior walls and the centerline of interior demising walls and therefore, the stated square footage of the units may vary from the square footage that would be determined by using the description of the "unit" set forth in the declaration.