



GIRALDA PLACE
RESIDENCES

RESIDENCE 6G

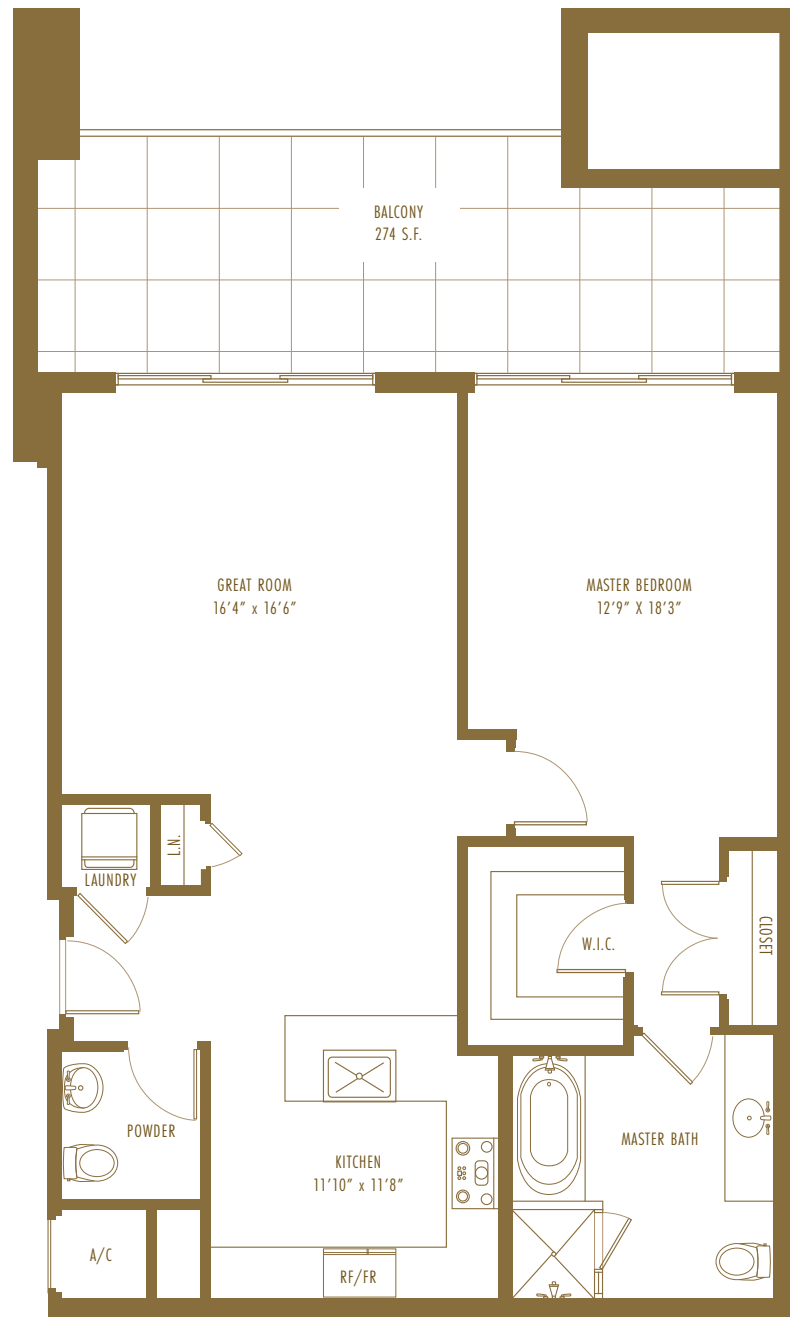
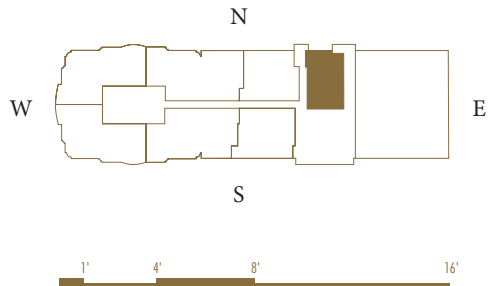
1 Bedrooms | 1.5 Bathrooms

Interior Area:

1,096 Sq. Ft. | 102 m²

Terrace/Balcony Area:

274 Sq.Ft. | 25.5 m²



ORAL REPRESENTATIONS CANNOT BE RELIED UPON AS CORRECTLY STATING REPRESENTATIONS OF THE DEVELOPER. FOR CORRECT REPRESENTATIONS, MAKE REFERENCE TO THIS BROCHURE AND TO THE DOCUMENTS REQUIRED BY SECTION 718.503, FLORIDA STATUTES, TO BE FURNISHED BY A DEVELOPER TO A BUYER OR LESSEE.

Sketches, renderings, graphic materials, plans, specifications, terms, conditions and statements contained herein are proposed only and are subject to architectural and other revisions at the sole discretion of the developer, builder, architect, or as may be required by law. Floor plans may not be to scale. Any furniture, appliances or decorator ready items depicted herein are shown for artistic and illustrative purposes only and are not included in the purchase and sale of the residence. Dimensions are based on the definition of the unit as provided in the declaration and the Florida Administrative Code, as such they include only the interior airspace between perimeter walls and exclude interior structural components. However, measurements of the rooms set forth on any floor plan are generally taken from the greatest point of each given room (as if the room was a perfect rectangle), without regard for any cutouts. Accordingly, the area of the actual room will typically be smaller than the product obtained by multiplying the stated length times width. All dimensions are approximate and may vary from actual construction; all floor plans and development plans are subject to change. The renderings illustrate and depict a lifestyle, however, amenities, features and specifications are subject to change without notice. Buyers should check with the sales center for the most current pricing. This is not intended to be an offer to sell, or solicitation to buy condominium units where prohibited by law. All real estate shown herein is subject to the US Federal Fair Housing Act of 1998.



GIRALDA PLACE

RESIDENCES

RESIDENCE 5E

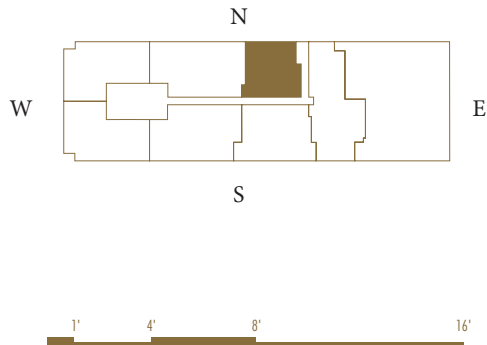
2 Bedrooms | 2.5 Bathrooms

Interior Area:

1,391 Sq. Ft. | 129 m²

Terrace/Balcony Area:

595 Sq.Ft. | 55 m²



ORAL REPRESENTATIONS CANNOT BE RELIED UPON AS CORRECTLY STATING REPRESENTATIONS OF THE DEVELOPER. FOR CORRECT REPRESENTATIONS, MAKE REFERENCE TO THIS BROCHURE AND TO THE DOCUMENTS REQUIRED BY SECTION 718.503, FLORIDA STATUTES, TO BE FURNISHED BY A DEVELOPER TO A BUYER OR LESSEE.

Sketches, renderings, graphic materials, plans, specifications, terms, conditions and statements contained herein are proposed only and are subject to architectural and other revisions at the sole discretion of the developer, builder, architect, or as may be required by law. Floor plans may not be to scale. Any furniture, appliances or decorator ready items depicted herein are shown for artistic and illustrative purposes only and are not included in the purchase and sale of the residence. Dimensions are based on the definition of the unit as provided in the declaration and the Florida Administrative Code, as such they include only the interior airspace between perimeter walls and exclude interior structural components. However, measurements of the rooms set forth on any floor plan are generally taken from the greatest point of each given room (as if the room was a perfect rectangle), without regard for any cutouts. Accordingly, the area of the actual room will typically be smaller than the product obtained by multiplying the stated length times width. All dimensions are approximate and may vary from actual construction; all floor plans and development plans are subject to change. The renderings illustrate and depict a lifestyle, however, amenities, features and specifications are subject to change without notice. Buyers should check with the sales center for the most current pricing. This is not intended to be an offer to sell, or solicitation to buy condominium units where prohibited by law. All real estate shown herein is subject to the US Federal Fair Housing Act of 1998.



GIRALDA PLACE RESIDENCES

RESIDENCE 5F

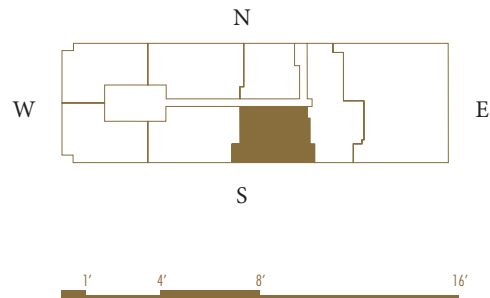
2 Bedrooms | 2.5 Bathrooms

Interior Area:

1,731 Sq. Ft. | 161 m²

Terrace/Balcony Area:

898 Sq.Ft. | 83 m²



ORAL REPRESENTATIONS CANNOT BE RELIED UPON AS CORRECTLY STATING REPRESENTATIONS OF THE DEVELOPER. FOR CORRECT REPRESENTATIONS, MAKE REFERENCE TO THIS BROCHURE AND TO THE DOCUMENTS REQUIRED BY SECTION 718.503, FLORIDA STATUTES, TO BE FURNISHED BY A DEVELOPER TO A BUYER OR LESSEE.

Sketches, renderings, graphic materials, plans, specifications, terms, conditions and statements contained herein are proposed only and are subject to architectural and other revisions at the sole discretion of the developer, builder, architect, or as may be required by law. Floor plans may not be to scale. Any furniture, appliances or decorator ready items depicted herein are shown for artistic and illustrative purposes only and are not included in the purchase and sale of the residence. Dimensions are based on the definition of the unit as provided in the declaration and the Florida Administrative Code, as such they include only the interior airspace between perimeter walls and exclude interior structural components. However, measurements of the rooms set forth on any floor plan are generally taken from the greatest point of each given room (as if the room was a perfect rectangle), without regard for any cutouts. Accordingly, the area of the actual room will typically be smaller than the product obtained by multiplying the stated length times width. All dimensions are approximate and may vary from actual construction; all floor plans and development plans are subject to change. The renderings illustrate and depict a lifestyle, however, amenities, features and specifications are subject to change without notice. Buyers should check with the sales center for the most current pricing. This is not intended to be an offer to sell, or solicitation to buy condominium units where prohibited by law. All real estate shown herein is subject to the US Federal Fair Housing Act of 1998.



GIRALDA PLACE

RESIDENCES

RESIDENCE 6E

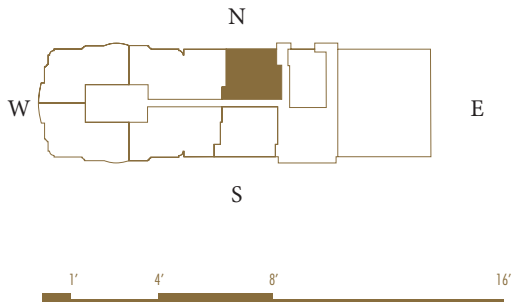
2 Bedrooms | 2.5 Bathrooms

Interior Area:

1,391 Sq. Ft. | 129 m²

Terrace/Balcony Area:

390 Sq.Ft. | 36 m²



ORAL REPRESENTATIONS CANNOT BE RELIED UPON AS CORRECTLY STATING REPRESENTATIONS OF THE DEVELOPER. FOR CORRECT REPRESENTATIONS, MAKE REFERENCE TO THIS BROCHURE AND TO THE DOCUMENTS REQUIRED BY SECTION 718.503, FLORIDA STATUTES, TO BE FURNISHED BY A DEVELOPER TO A BUYER OR LESSEE.

Sketches, renderings, graphic materials, plans, specifications, terms, conditions and statements contained herein are proposed only and are subject to architectural and other revisions at the sole discretion of the developer, builder, architect, or as may be required by law. Floor plans may not be to scale. Any furniture, appliances or decorator ready items depicted herein are shown for artistic and illustrative purposes only and are not included in the purchase and sale of the residence. Dimensions are based on the definition of the unit as provided in the declaration and the Florida Administrative Code, as such they include only the interior airspace between perimeter walls and exclude interior structural components. However, measurements of the rooms set forth on any floor plan are generally taken from the greatest point of each given room (as if the room was a perfect rectangle), without regard for any cutouts. Accordingly, the area of the actual room will typically be smaller than the product obtained by multiplying the stated length times width. All dimensions are approximate and may vary from actual construction; all floor plans and development plans are subject to change. The renderings illustrate and depict a lifestyle, however, amenities, features and specifications are subject to change without notice. Buyers should check with the sales center for the most current pricing. This is not intended to be an offer to sell, or solicitation to buy condominium units where prohibited by law. All real estate shown herein is subject to the US Federal Fair Housing Act of 1998.



GIRALDA PLACE RESIDENCES

RESIDENCE 6F

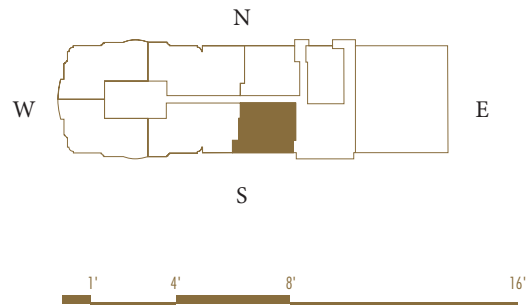
2 Bedrooms | 2.5 Bathrooms

Interior Area:

1,405 Sq. Ft. | 131 m²

Terrace/Balcony Area:

461 Sq.Ft. | 43 m²



ORAL REPRESENTATIONS CANNOT BE RELIED UPON AS CORRECTLY STATING REPRESENTATIONS OF THE DEVELOPER. FOR CORRECT REPRESENTATIONS, MAKE REFERENCE TO THIS BROCHURE AND TO THE DOCUMENTS REQUIRED BY SECTION 718.503, FLORIDA STATUTES, TO BE FURNISHED BY A DEVELOPER TO A BUYER OR LESSEE.

Sketches, renderings, graphic materials, plans, specifications, terms, conditions and statements contained herein are proposed only and are subject to architectural and other revisions at the sole discretion of the developer, builder, architect, or as may be required by law. Floor plans may not be to scale. Any furniture, appliances or decorator ready items depicted herein are shown for artistic and illustrative purposes only and are not included in the purchase and sale of the residence. Dimensions are based on the definition of the unit as provided in the declaration and the Florida Administrative Code, as such they include only the interior airspace between perimeter walls and exclude interior structural components. However, measurements of the rooms set forth on any floor plan are generally taken from the greatest point of each given room (as if the room was a perfect rectangle), without regard for any cutouts. Accordingly, the area of the actual room will typically be smaller than the product obtained by multiplying the stated length times width. All dimensions are approximate and may vary from actual construction; all floor plans and development plans are subject to change. The renderings illustrate and depict a lifestyle, however, amenities, features and specifications are subject to change without notice. Buyers should check with the sales center for the most current pricing. This is not intended to be an offer to sell, or solicitation to buy condominium units where prohibited by law. All real estate shown herein is subject to the US Federal Fair Housing Act of 1998.



GIRALDA PLACE RESIDENCES

RESIDENCE 7C

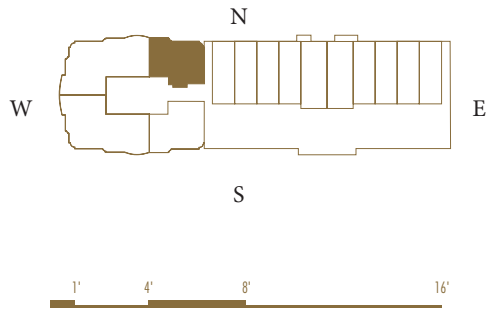
2 Bedrooms | 2.5 Bathrooms

Interior Area:

1,394 Sq. Ft. | 130 m²

Terrace/Balcony Area:

88 Sq.Ft. | 8 m²



ORAL REPRESENTATIONS CANNOT BE RELIED UPON AS CORRECTLY STATING REPRESENTATIONS OF THE DEVELOPER. FOR CORRECT REPRESENTATIONS, MAKE REFERENCE TO THIS BROCHURE AND TO THE DOCUMENTS REQUIRED BY SECTION 718.503, FLORIDA STATUTES, TO BE FURNISHED BY A DEVELOPER TO A BUYER OR LESSEE.

Sketches, renderings, graphic materials, plans, specifications, terms, conditions and statements contained herein are proposed only and are subject to architectural and other revisions at the sole discretion of the developer, builder, architect, or as may be required by law. Floor plans may not be to scale. Any furniture, appliances or decorator ready items depicted herein are shown for artistic and illustrative purposes only and are not included in the purchase and sale of the residence. Dimensions are based on the definition of the unit as provided in the declaration and the Florida Administrative Code, as such they include only the interior airspace between perimeter walls and exclude interior structural components. However, measurements of the rooms set forth on any floor plan are generally taken from the greatest point of each given room (as if the room was a perfect rectangle), without regard for any cutouts. Accordingly, the area of the actual room will typically be smaller than the product obtained by multiplying the stated length times width. All dimensions are approximate and may vary from actual construction; all floor plans and development plans are subject to change. The renderings illustrate and depict a lifestyle, however, amenities, features and specifications are subject to change without notice. Buyers should check with the sales center for the most current pricing. This is not intended to be an offer to sell, or solicitation to buy condominium units where prohibited by law. All real estate shown herein is subject to the US Federal Fair Housing Act of 1998.



GIRALDA PLACE

RESIDENCES

RESIDENCE 7D

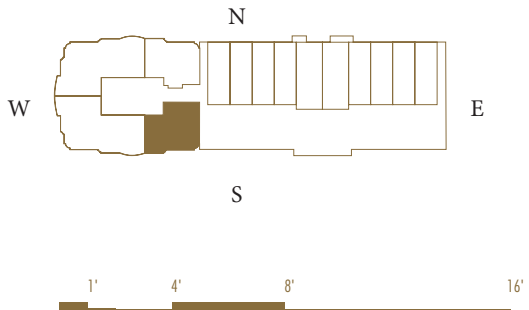
2 Bedrooms | 2.5 Bathrooms

Interior Area:

1,475 Sq. Ft. | 137 m²

Terrace/Balcony Area:

88 Sq.Ft. | 8 m²



ORAL REPRESENTATIONS CANNOT BE RELIED UPON AS CORRECTLY STATING REPRESENTATIONS OF THE DEVELOPER. FOR CORRECT REPRESENTATIONS, MAKE REFERENCE TO THIS BROCHURE AND TO THE DOCUMENTS REQUIRED BY SECTION 718.503, FLORIDA STATUTES, TO BE FURNISHED BY A DEVELOPER TO A BUYER OR LESSEE.

Sketches, renderings, graphic materials, plans, specifications, terms, conditions and statements contained herein are proposed only and are subject to architectural and other revisions at the sole discretion of the developer, builder, architect, or as may be required by law. Floor plans may not be to scale. Any furniture, appliances or decorator ready items depicted herein are shown for artistic and illustrative purposes only and are not included in the purchase and sale of the residence. Dimensions are based on the definition of the unit as provided in the declaration and the Florida Administrative Code, as such they include only the interior airspace between perimeter walls and exclude interior structural components. However, measurements of the rooms set forth on any floor plan are generally taken from the greatest point of each given room (as if the room was a perfect rectangle), without regard for any cutouts. Accordingly, the area of the actual room will typically be smaller than the product obtained by multiplying the stated length times width. All dimensions are approximate and may vary from actual construction; all floor plans and development plans are subject to change. The renderings illustrate and depict a lifestyle, however, amenities, features and specifications are subject to change without notice. Buyers should check with the sales center for the most current pricing. This is not intended to be an offer to sell, or solicitation to buy condominium units where prohibited by law. All real estate shown herein is subject to the US Federal Fair Housing Act of 1998.



GIRALDA PLACE RESIDENCES

RESIDENCE 8C

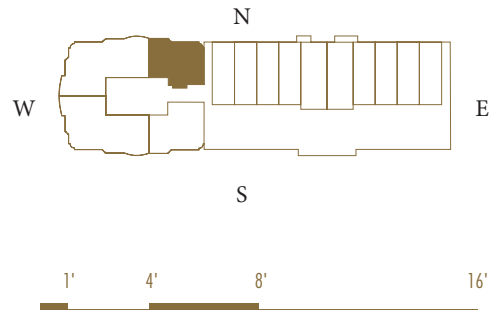
2 Bedrooms | 2.5 Bathrooms

Interior Area:

1,436 Sq. Ft. | 133 m²

Terrace/Balcony Area:

88 Sq.Ft. | 8 m²



ORAL REPRESENTATIONS CANNOT BE RELIED UPON AS CORRECTLY STATING REPRESENTATIONS OF THE DEVELOPER. FOR CORRECT REPRESENTATIONS, MAKE REFERENCE TO THIS BROCHURE AND TO THE DOCUMENTS REQUIRED BY SECTION 718.503, FLORIDA STATUTES, TO BE FURNISHED BY A DEVELOPER TO A BUYER OR LESSEE.

Sketches, renderings, graphic materials, plans, specifications, terms, conditions and statements contained herein are proposed only and are subject to architectural and other revisions at the sole discretion of the developer, builder, architect, or as may be required by law. Floor plans may not be to scale. Any furniture, appliances or decorator ready items depicted herein are shown for artistic and illustrative purposes only and are not included in the purchase and sale of the residence. Dimensions are based on the definition of the unit as provided in the declaration and the Florida Administrative Code, as such they include only the interior airspace between perimeter walls and exclude interior structural components. However, measurements of the rooms set forth on any floor plan are generally taken from the greatest point of each given room (as if the room was a perfect rectangle), without regard for any cutouts. Accordingly, the area of the actual room will typically be smaller than the product obtained by multiplying the stated length times width. All dimensions are approximate and may vary from actual construction; all floor plans and development plans are subject to change. The renderings illustrate and depict a lifestyle, however, amenities, features and specifications are subject to change without notice. Buyers should check with the sales center for the most current pricing. This is not intended to be an offer to sell, or solicitation to buy condominium units where prohibited by law. All real estate shown herein is subject to the US Federal Fair Housing Act of 1998.



GIRALDA PLACE RESIDENCES

RESIDENCE 8D

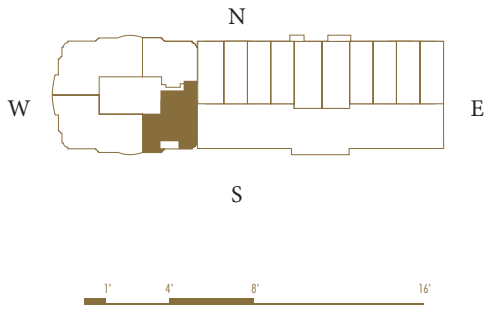
2 Bedrooms | 3.5 Bathrooms + Den

Interior Area:

1,809 Sq. Ft. | 168 m²

Terrace/Balcony Area:

124 Sq.Ft. | 11.5 m²



ORAL REPRESENTATIONS CANNOT BE RELIED UPON AS CORRECTLY STATING REPRESENTATIONS OF THE DEVELOPER. FOR CORRECT REPRESENTATIONS, MAKE REFERENCE TO THIS BROCHURE AND TO THE DOCUMENTS REQUIRED BY SECTION 718.503, FLORIDA STATUTES, TO BE FURNISHED BY A DEVELOPER TO A BUYER OR LESSEE.

Sketches, renderings, graphic materials, plans, specifications, terms, conditions and statements contained herein are proposed only and are subject to architectural and other revisions at the sole discretion of the developer, builder, architect, or as may be required by law. Floor plans may not be to scale. Any furniture, appliances or decorator ready items depicted herein are shown for artistic and illustrative purposes only and are not included in the purchase and sale of the residence. Dimensions are based on the definition of the unit as provided in the declaration and the Florida Administrative Code, as such they include only the interior airspace between perimeter walls and exclude interior structural components. However, measurements of the rooms set forth on any floor plan are generally taken from the greatest point of each given room (as if the room was a perfect rectangle), without regard for any cutouts. Accordingly, the area of the actual room will typically be smaller than the product obtained by multiplying the stated length times width. All dimensions are approximate and may vary from actual construction; all floor plans and development plans are subject to change. The renderings illustrate and depict a lifestyle, however, amenities, features and specifications are subject to change without notice. Buyers should check with the sales center for the most current pricing. This is not intended to be an offer to sell, or solicitation to buy condominium units where prohibited by law. All real estate shown herein is subject to the US Federal Fair Housing Act of 1998.



GIRALDA PLACE RESIDENCES

RESIDENCE 5A

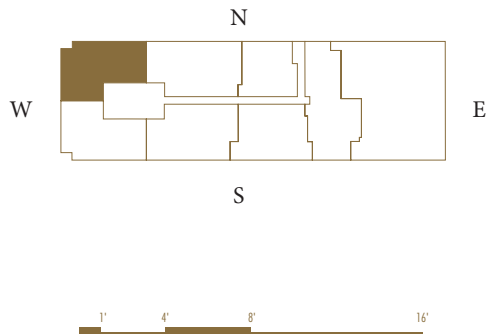
3 Bedrooms | 3.5 Bathrooms

Interior Area:

2,557 Sq. Ft. | 238 m²

Terrace/Balcony Area:

397 Sq. Ft. | 37 m²



ORAL REPRESENTATIONS CANNOT BE RELIED UPON AS CORRECTLY STATING REPRESENTATIONS OF THE DEVELOPER. FOR CORRECT REPRESENTATIONS, MAKE REFERENCE TO THIS BROCHURE AND TO THE DOCUMENTS REQUIRED BY SECTION 718.503, FLORIDA STATUTES, TO BE FURNISHED BY A DEVELOPER TO A BUYER OR LESSEE.

Sketches, renderings, graphic materials, plans, specifications, terms, conditions and statements contained herein are proposed only and are subject to architectural and other revisions at the sole discretion of the developer, builder, architect, or as may be required by law. Floor plans may not be to scale. Any furniture, appliances or decorator ready items depicted herein are shown for artistic and illustrative purposes only and are not included in the purchase and sale of the residence. Dimensions are based on the definition of the unit as provided in the declaration and the Florida Administrative Code, as such they include only the interior airspace between perimeter walls and exclude interior structural components. However, measurements of the rooms set forth on any floor plan are generally taken from the greatest point of each given room (as if the room was a perfect rectangle), without regard for any cutouts. Accordingly, the area of the actual room will typically be smaller than the product obtained by multiplying the stated length times width. All dimensions are approximate and may vary from actual construction; all floor plans and development plans are subject to change. The renderings illustrate and depict a lifestyle, however, amenities, features and specifications are subject to change without notice. Buyers should check with the sales center for the most current pricing. This is not intended to be an offer to sell, or solicitation to buy condominium units where prohibited by law. All real estate shown herein is subject to the US Federal Fair Housing Act of 1998.



GIRALDA PLACE

RESIDENCES

RESIDENCE 5B

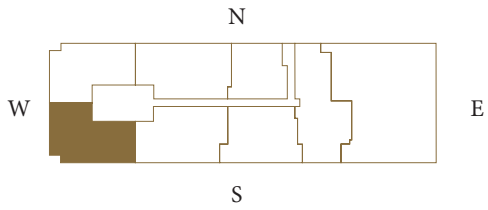
3 Bedrooms | 3.5 Bathrooms

Interior Area:

2,429 Sq. Ft. | 226 m²

Terrace/Balcony Area:

397 Sq.Ft. | 37 m²



ORAL REPRESENTATIONS CANNOT BE RELIED UPON AS CORRECTLY STATING REPRESENTATIONS OF THE DEVELOPER. FOR CORRECT REPRESENTATIONS, MAKE REFERENCE TO THIS BROCHURE AND TO THE DOCUMENTS REQUIRED BY SECTION 718.503, FLORIDA STATUTES, TO BE FURNISHED BY A DEVELOPER TO A BUYER OR LESSEE.

Sketches, renderings, graphic materials, plans, specifications, terms, conditions and statements contained herein are proposed only and are subject to architectural and other revisions at the sole discretion of the developer, builder, architect, or as may be required by law. Floor plans may not be to scale. Any furniture, appliances or decorator ready items depicted herein are shown for artistic and illustrative purposes only and are not included in the purchase and sale of the residence. Dimensions are based on the definition of the unit as provided in the declaration and the Florida Administrative Code, as such they include only the interior airspace between perimeter walls and exclude interior structural components. However, measurements of the rooms set forth on any floor plan are generally taken from the greatest point of each given room (as if the room was a perfect rectangle), without regard for any cutouts. Accordingly, the area of the actual room will typically be smaller than the product obtained by multiplying the stated length times width. All dimensions are approximate and may vary from actual construction; all floor plans and development plans are subject to change. The renderings illustrate and depict a lifestyle, however, amenities, features and specifications are subject to change without notice. Buyers should check with the sales center for the most current pricing. This is not intended to be an offer to sell, or solicitation to buy condominium units where prohibited by law. All real estate shown herein is subject to the US Federal Fair Housing Act of 1998.



GIRALDA PLACE RESIDENCES

RESIDENCE 5C

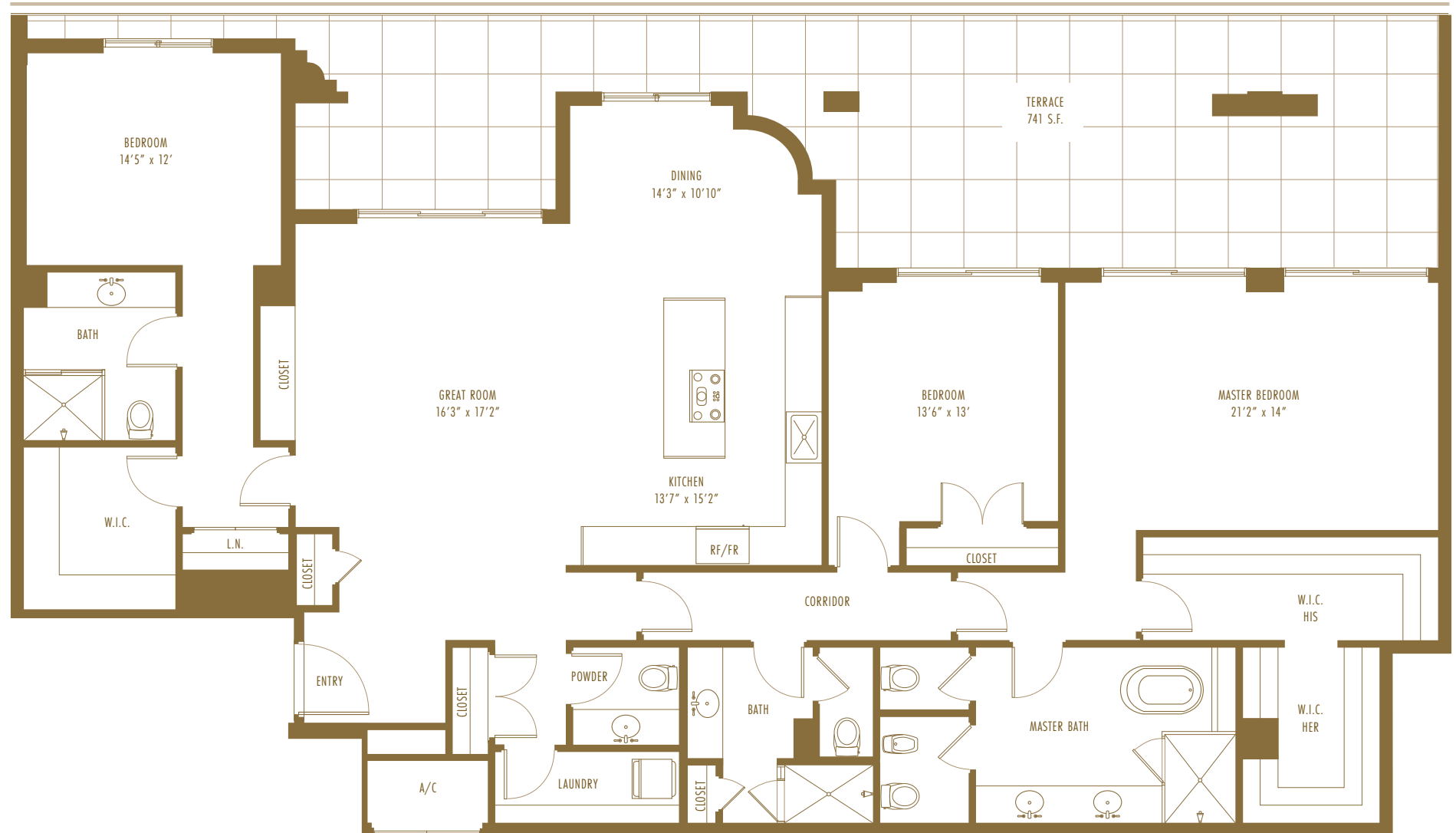
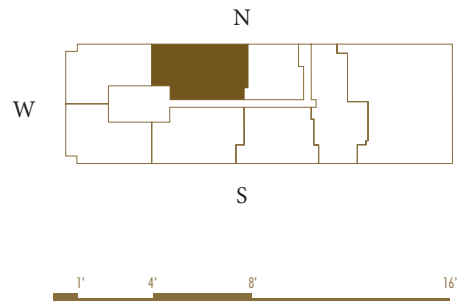
3 Bedrooms | 3.5 Bathrooms

Interior Area:

2,505 Sq. Ft. | 233 m²

Terrace/Balcony Area:

741 Sq.Ft. | 69 m²



ORAL REPRESENTATIONS CANNOT BE RELIED UPON AS CORRECTLY STATING REPRESENTATIONS OF THE DEVELOPER. FOR CORRECT REPRESENTATIONS, MAKE REFERENCE TO THIS BROCHURE AND TO THE DOCUMENTS REQUIRED BY SECTION 718.503, FLORIDA STATUTES, TO BE FURNISHED BY A DEVELOPER TO A BUYER OR LESSEE.

Sketches, renderings, graphic materials, plans, specifications, terms, conditions and statements contained herein are proposed only and are subject to architectural and other revisions at the sole discretion of the developer, builder, architect, or as may be required by law. Floor plans may not be to scale. Any furniture, appliances or decorator ready items depicted herein are shown for artistic and illustrative purposes only and are not included in the purchase and sale of the residence. Dimensions are based on the definition of the unit as provided in the declaration and the Florida Administrative Code, as such they include only the interior airspace between perimeter walls and exclude interior structural components. However, measurements of the rooms set forth on any floor plan are generally taken from the greatest point of each given room (as if the room was a perfect rectangle), without regard for any cutouts. Accordingly, the area of the actual room will typically be smaller than the product obtained by multiplying the stated length times width. All dimensions are approximate and may vary from actual construction; all floor plans and development plans are subject to change. The renderings illustrate and depict a lifestyle, however, amenities, features and specifications are subject to change without notice. Buyers should check with the sales center for the most current pricing. This is not intended to be an offer to sell, or solicitation to buy condominium units where prohibited by law. All real estate shown herein is subject to the US Federal Fair Housing Act of 1998.



GIRALDA PLACE RESIDENCES

RESIDENCE 5D

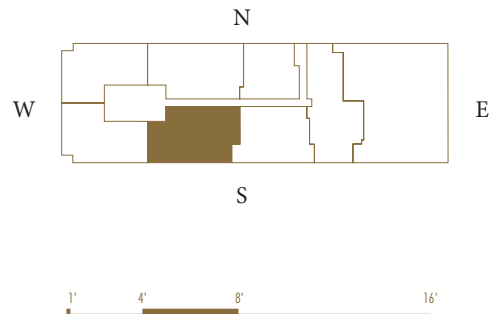
3 Bedrooms | 3.5 Bathrooms

Interior Area:

2,477 Sq. Ft. | 230 m²

Terrace/Balcony Area:

583 Sq.Ft. | 54 m²



ORAL REPRESENTATIONS CANNOT BE RELIED UPON AS CORRECTLY STATING REPRESENTATIONS OF THE DEVELOPER. FOR CORRECT REPRESENTATIONS, MAKE REFERENCE TO THIS BROCHURE AND TO THE DOCUMENTS REQUIRED BY SECTION 718.503, FLORIDA STATUTES, TO BE FURNISHED BY A DEVELOPER TO A BUYER OR LESSEE.

Sketches, renderings, graphic materials, plans, specifications, terms, conditions and statements contained herein are proposed only and are subject to architectural and other revisions at the sole discretion of the developer, builder, architect, or as may be required by law. Floor plans may not be to scale. Any furniture, appliances or decorator ready items depicted herein are shown for artistic and illustrative purposes only and are not included in the purchase and sale of the residence. Dimensions are based on the definition of the unit as provided in the declaration and the Florida Administrative Code, as such they include only the interior airspace between perimeter walls and exclude interior structural components. However, measurements of the rooms set forth on any floor plan are generally taken from the greatest point of each given room (as if the room was a perfect rectangle), without regard for any cutouts. Accordingly, the area of the actual room will typically be smaller than the product obtained by multiplying the stated length times width. All dimensions are approximate and may vary from actual construction; all floor plans and development plans are subject to change. The renderings illustrate and depict a lifestyle, however, amenities, features and specifications are subject to change without notice. Buyers should check with the sales center for the most current pricing. This is not intended to be an offer to sell, or solicitation to buy condominium units where prohibited by law. All real estate shown herein is subject to the US Federal Fair Housing Act of 1998.



GIRALDA PLACE

RESIDENCES

RESIDENCE 5G

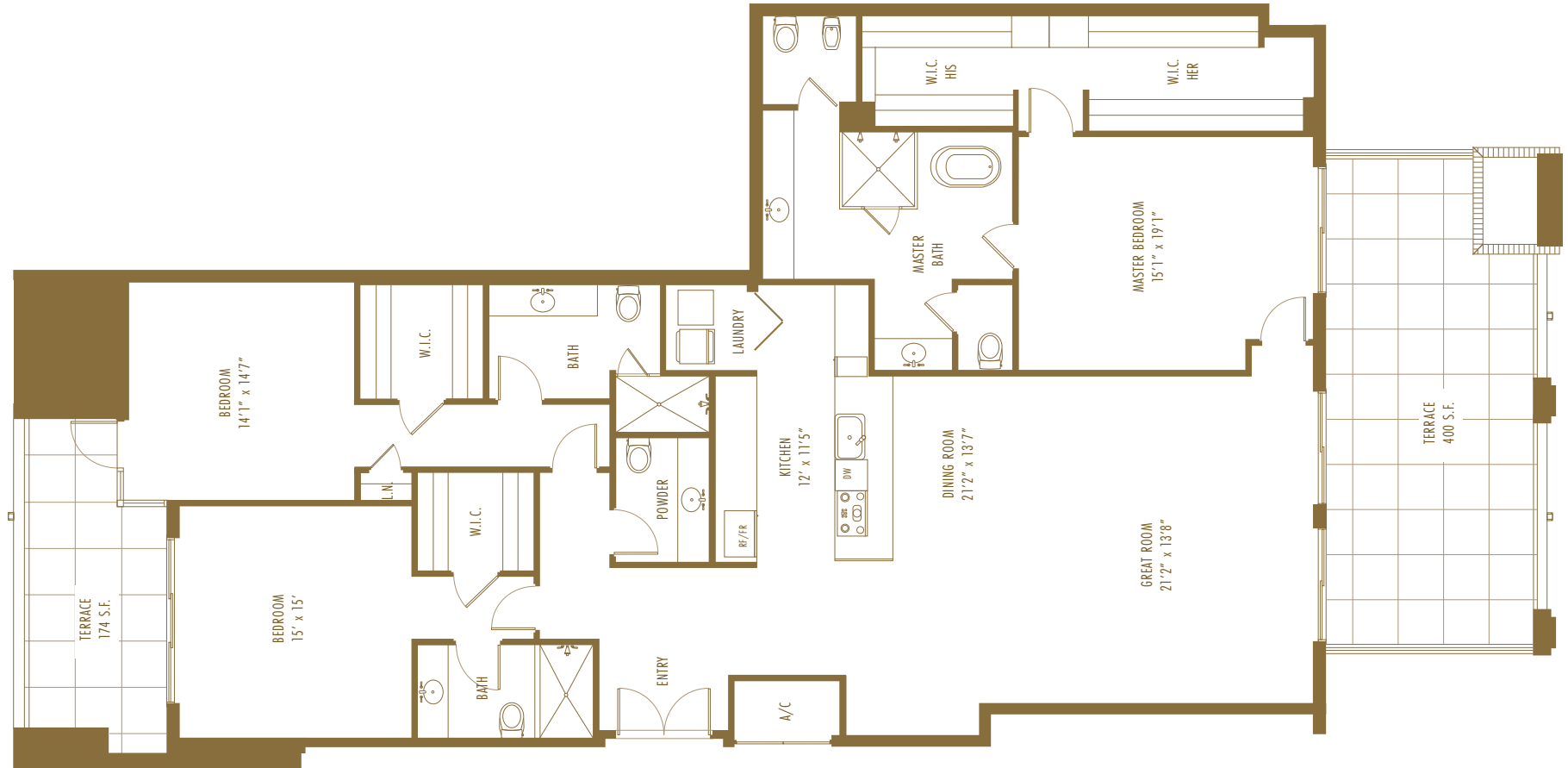
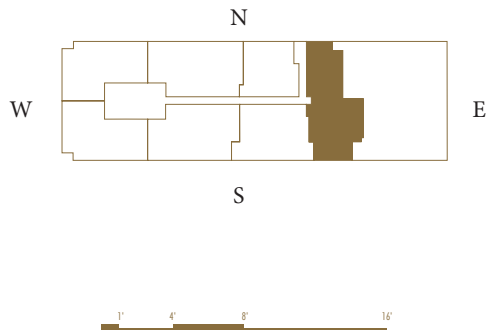
3 Bedrooms | 3.5 Bathrooms

Interior Area:

2,757 Sq. Ft. | 256 m²

Terrace/Balcony Area:

574 Sq.Ft. | 53 m²



ORAL REPRESENTATIONS CANNOT BE RELIED UPON AS CORRECTLY STATING REPRESENTATIONS OF THE DEVELOPER. FOR CORRECT REPRESENTATIONS, MAKE REFERENCE TO THIS BROCHURE AND TO THE DOCUMENTS REQUIRED BY SECTION 718.503, FLORIDA STATUTES, TO BE FURNISHED BY A DEVELOPER TO A BUYER OR LESSEE.

Sketches, renderings, graphic materials, plans, specifications, terms, conditions and statements contained herein are proposed only and are subject to architectural and other revisions at the sole discretion of the developer, builder, architect, or as may be required by law. Floor plans may not be to scale. Any furniture, appliances or decorator ready items depicted herein are shown for artistic and illustrative purposes only and are not included in the purchase and sale of the residence. Dimensions are based on the definition of the unit as provided in the declaration and the Florida Administrative Code, as such they include only the interior airspace between perimeter walls and exclude interior structural components. However, measurements of the rooms set forth on any floor plan are generally taken from the greatest point of each given room (as if the room was a perfect rectangle), without regard for any cutouts. Accordingly, the area of the actual room will typically be smaller than the product obtained by multiplying the stated length times width. All dimensions are approximate and may vary from actual construction; all floor plans and development plans are subject to change. The renderings illustrate and depict a lifestyle, however, amenities, features and specifications are subject to change without notice. Buyers should check with the sales center for the most current pricing. This is not intended to be an offer to sell, or solicitation to buy condominium units where prohibited by law. All real estate shown herein is subject to the US Federal Fair Housing Act of 1998.



GIRALDA PLACE RESIDENCES

RESIDENCE 6A

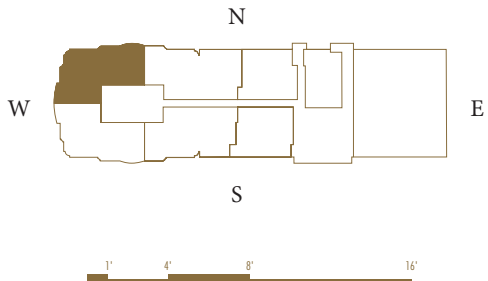
3 Bedrooms | 3.5 Bathrooms

Interior Area:

2,557 Sq. Ft. | 238 m²

Terrace/Balcony Area:

232 Sq.Ft. | 21.5 m²



ORAL REPRESENTATIONS CANNOT BE RELIED UPON AS CORRECTLY STATING REPRESENTATIONS OF THE DEVELOPER. FOR CORRECT REPRESENTATIONS, MAKE REFERENCE TO THIS BROCHURE AND TO THE DOCUMENTS REQUIRED BY SECTION 718.503, FLORIDA STATUTES, TO BE FURNISHED BY A DEVELOPER TO A BUYER OR LESSEE.

Sketches, renderings, graphic materials, plans, specifications, terms, conditions and statements contained herein are proposed only and are subject to architectural and other revisions at the sole discretion of the developer, builder, architect, or as may be required by law. Floor plans may not be to scale. Any furniture, appliances or decorator ready items depicted herein are shown for artistic and illustrative purposes only and are not included in the purchase and sale of the residence. Dimensions are based on the definition of the unit as provided in the declaration and the Florida Administrative Code, as such they include only the interior airspace between perimeter walls and exclude interior structural components. However, measurements of the rooms set forth on any floor plan are generally taken from the greatest point of each given room (as if the room was a perfect rectangle), without regard for any cutouts. Accordingly, the area of the actual room will typically be smaller than the product obtained by multiplying the stated length times width. All dimensions are approximate and may vary from actual construction; all floor plans and development plans are subject to change. The renderings illustrate and depict a lifestyle, however, amenities, features and specifications are subject to change without notice. Buyers should check with the sales center for the most current pricing. This is not intended to be an offer to sell, or solicitation to buy condominium units where prohibited by law. All real estate shown herein is subject to the US Federal Fair Housing Act of 1998.



GIRALDA PLACE RESIDENCES

RESIDENCE 6B

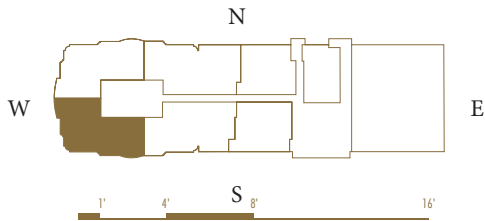
3 Bedrooms | 3.5 Bathrooms

Interior Area:

2,429 Sq. Ft. | 226 m²

Terrace/Balcony Area:

232 Sq.Ft. | 21.5 m²



ORAL REPRESENTATIONS CANNOT BE RELIED UPON AS CORRECTLY STATING REPRESENTATIONS OF THE DEVELOPER. FOR CORRECT REPRESENTATIONS, MAKE REFERENCE TO THIS BROCHURE AND TO THE DOCUMENTS REQUIRED BY SECTION 718.503, FLORIDA STATUTES, TO BE FURNISHED BY A DEVELOPER TO A BUYER OR LESSEE.

Sketches, renderings, graphic materials, plans, specifications, terms, conditions and statements contained herein are proposed only and are subject to architectural and other revisions at the sole discretion of the developer, builder, architect, or as may be required by law. Floor plans may not be to scale. Any furniture, appliances or decorator ready items depicted herein are shown for artistic and illustrative purposes only and are not included in the purchase and sale of the residence. Dimensions are based on the definition of the unit as provided in the declaration and the Florida Administrative Code, as such they include only the interior airspace between perimeter walls and exclude interior structural components. However, measurements of the rooms set forth on any floor plan are generally taken from the greatest point of each given room (as if the room was a perfect rectangle), without regard for any cutouts. Accordingly, the area of the actual room will typically be smaller than the product obtained by multiplying the stated length times width. All dimensions are approximate and may vary from actual construction; all floor plans and development plans are subject to change. The renderings illustrate and depict a lifestyle, however, amenities, features and specifications are subject to change without notice. Buyers should check with the sales center for the most current pricing. This is not intended to be an offer to sell, or solicitation to buy condominium units where prohibited by law. All real estate shown herein is subject to the US Federal Fair Housing Act of 1998.



GIRALDA PLACE RESIDENCES

RESIDENCE 6C

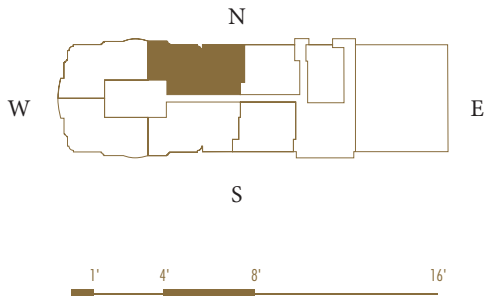
3 Bedrooms | 3.5 Bathrooms

Interior Area:

2,504 Sq. Ft. | 233 m²

Terrace/Balcony Area:

402 Sq.Ft. | 37 m²



ORAL REPRESENTATIONS CANNOT BE RELIED UPON AS CORRECTLY STATING REPRESENTATIONS OF THE DEVELOPER. FOR CORRECT REPRESENTATIONS, MAKE REFERENCE TO THIS BROCHURE AND TO THE DOCUMENTS REQUIRED BY SECTION 718.503, FLORIDA STATUTES, TO BE FURNISHED BY A DEVELOPER TO A BUYER OR LESSEE.

Sketches, renderings, graphic materials, plans, specifications, terms, conditions and statements contained herein are proposed only and are subject to architectural and other revisions at the sole discretion of the developer, builder, architect, or as may be required by law. Floor plans may not be to scale. Any furniture, appliances or decorator ready items depicted herein are shown for artistic and illustrative purposes only and are not included in the purchase and sale of the residence. Dimensions are based on the definition of the unit as provided in the declaration and the Florida Administrative Code, as such they include only the interior airspace between perimeter walls and exclude interior structural components. However, measurements of the rooms set forth on any floor plan are generally taken from the greatest point of each given room (as if the room was a perfect rectangle), without regard for any cutouts. Accordingly, the area of the actual room will typically be smaller than the product obtained by multiplying the stated length times width. All dimensions are approximate and may vary from actual construction; all floor plans and development plans are subject to change. The renderings illustrate and depict a lifestyle, however, amenities, features and specifications are subject to change without notice. Buyers should check with the sales center for the most current pricing. This is not intended to be an offer to sell, or solicitation to buy condominium units where prohibited by law. All real estate shown herein is subject to the US Federal Fair Housing Act of 1998.



GIRALDA PLACE RESIDENCES

RESIDENCE 6D

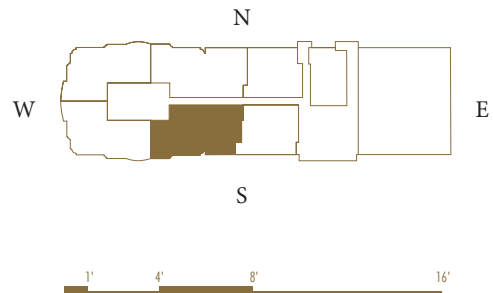
3 Bedrooms | 3.5 Bathrooms

Interior Area:

2,449 Sq. Ft. | 228 m²

Terrace/Balcony Area:

309 Sq.Ft. | 28.5 m²



ORAL REPRESENTATIONS CANNOT BE RELIED UPON AS CORRECTLY STATING REPRESENTATIONS OF THE DEVELOPER. FOR CORRECT REPRESENTATIONS, MAKE REFERENCE TO THIS BROCHURE AND TO THE DOCUMENTS REQUIRED BY SECTION 718.503, FLORIDA STATUTES, TO BE FURNISHED BY A DEVELOPER TO A BUYER OR LESSEE.

Sketches, renderings, graphic materials, plans, specifications, terms, conditions and statements contained herein are proposed only and are subject to architectural and other revisions at the sole discretion of the developer, builder, architect, or as may be required by law. Floor plans may not be to scale. Any furniture, appliances or decorator ready items depicted herein are shown for artistic and illustrative purposes only and are not included in the purchase and sale of the residence. Dimensions are based on the definition of the unit as provided in the declaration and the Florida Administrative Code, as such they include only the interior airspace between perimeter walls and exclude interior structural components. However, measurements of the rooms set forth on any floor plan are generally taken from the greatest point of each given room (as if the room was a perfect rectangle), without regard for any cutouts. Accordingly, the area of the actual room will typically be smaller than the product obtained by multiplying the stated length times width. All dimensions are approximate and may vary from actual construction; all floor plans and development plans are subject to change. The renderings illustrate and depict a lifestyle, however, amenities, features and specifications are subject to change without notice. Buyers should check with the sales center for the most current pricing. This is not intended to be an offer to sell, or solicitation to buy condominium units where prohibited by law. All real estate shown herein is subject to the US Federal Fair Housing Act of 1998.



GIRALDA PLACE RESIDENCES

RESIDENCE 7A

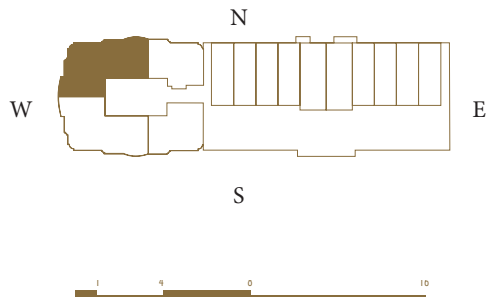
3 Bedrooms | 3.5 Bathrooms

Interior Area:

2,557 Sq. Ft. | 238 m²

Terrace/Balcony Area:

232 Sq.Ft. | 21.5 m²



ORAL REPRESENTATIONS CANNOT BE RELIED UPON AS CORRECTLY STATING REPRESENTATIONS OF THE DEVELOPER. FOR CORRECT REPRESENTATIONS, MAKE REFERENCE TO THIS BROCHURE AND TO THE DOCUMENTS REQUIRED BY SECTION 718.503, FLORIDA STATUTES, TO BE FURNISHED BY A DEVELOPER TO A BUYER OR LESSEE.

Sketches, renderings, graphic materials, plans, specifications, terms, conditions and statements contained herein are proposed only and are subject to architectural and other revisions at the sole discretion of the developer, builder, architect, or as may be required by law. Floor plans may not be to scale. Any furniture, appliances or decorator ready items depicted herein are shown for artistic and illustrative purposes only and are not included in the purchase and sale of the residence. Dimensions are based on the definition of the unit as provided in the declaration and the Florida Administrative Code, as such they include only the interior airspace between perimeter walls and exclude interior structural components. However, measurements of the rooms set forth on any floor plan are generally taken from the greatest point of each given room (as if the room was a perfect rectangle), without regard for any cutouts. Accordingly, the area of the actual room will typically be smaller than the product obtained by multiplying the stated length times width. All dimensions are approximate and may vary from actual construction; all floor plans and development plans are subject to change. The renderings illustrate and depict a lifestyle, however, amenities, features and specifications are subject to change without notice. Buyers should check with the sales center for the most current pricing. This is not intended to be an offer to sell, or solicitation to buy condominium units where prohibited by law. All real estate shown herein is subject to the US Federal Fair Housing Act of 1998.



GIRALDA PLACE RESIDENCES

RESIDENCE 7B

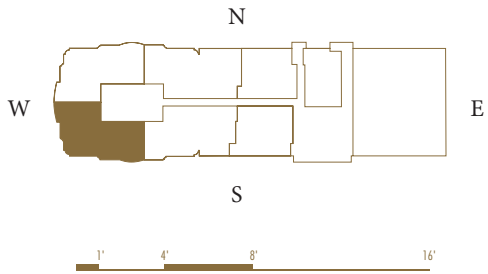
3 Bedrooms | 3.5 Bathrooms

Interior Area:

2,429 Sq. Ft. | 226 m²

Terrace/Balcony Area:

232 Sq.Ft. | 21.5 m²



ORAL REPRESENTATIONS CANNOT BE RELIED UPON AS CORRECTLY STATING REPRESENTATIONS OF THE DEVELOPER. FOR CORRECT REPRESENTATIONS, MAKE REFERENCE TO THIS BROCHURE AND TO THE DOCUMENTS REQUIRED BY SECTION 718.503, FLORIDA STATUTES, TO BE FURNISHED BY A DEVELOPER TO A BUYER OR LESSEE.

Sketches, renderings, graphic materials, plans, specifications, terms, conditions and statements contained herein are proposed only and are subject to architectural and other revisions at the sole discretion of the developer, builder, architect, or as may be required by law. Floor plans may not be to scale. Any furniture, appliances or decorator ready items depicted herein are shown for artistic and illustrative purposes only and are not included in the purchase and sale of the residence. Dimensions are based on the definition of the unit as provided in the declaration and the Florida Administrative Code, as such they include only the interior airspace between perimeter walls and exclude interior structural components. However, measurements of the rooms set forth on any floor plan are generally taken from the greatest point of each given room (as if the room was a perfect rectangle), without regard for any cutouts. Accordingly, the area of the actual room will typically be smaller than the product obtained by multiplying the stated length times width. All dimensions are approximate and may vary from actual construction; all floor plans and development plans are subject to change. The renderings illustrate and depict a lifestyle, however, amenities, features and specifications are subject to change without notice. Buyers should check with the sales center for the most current pricing. This is not intended to be an offer to sell, or solicitation to buy condominium units where prohibited by law. All real estate shown herein is subject to the US Federal Fair Housing Act of 1998.



GIRALDA PLACE RESIDENCES

RESIDENCE 8A

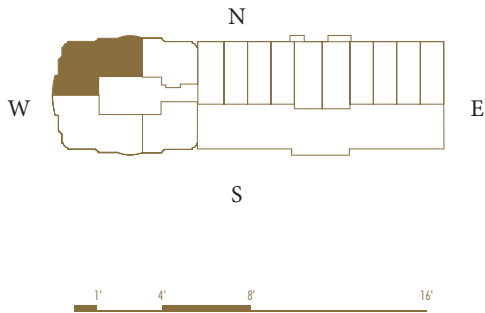
3 Bedrooms | 3.5 Bathrooms

Interior Area:

2,557 Sq. Ft. | 238 m²

Terrace/Balcony Area:

232 Sq.Ft. | 21.5 m²



ORAL REPRESENTATIONS CANNOT BE RELIED UPON AS CORRECTLY STATING REPRESENTATIONS OF THE DEVELOPER. FOR CORRECT REPRESENTATIONS, MAKE REFERENCE TO THIS BROCHURE AND TO THE DOCUMENTS REQUIRED BY SECTION 718.503, FLORIDA STATUTES, TO BE FURNISHED BY A DEVELOPER TO A BUYER OR LESSEE.

Sketches, renderings, graphic materials, plans, specifications, terms, conditions and statements contained herein are proposed only and are subject to architectural and other revisions at the sole discretion of the developer, builder, architect, or as may be required by law. Floor plans may not be to scale. Any furniture, appliances or decorator ready items depicted herein are shown for artistic and illustrative purposes only and are not included in the purchase and sale of the residence. Dimensions are based on the definition of the unit as provided in the declaration and the Florida Administrative Code, as such they include only the interior airspace between perimeter walls and exclude interior structural components. However, measurements of the rooms set forth on any floor plan are generally taken from the greatest point of each given room (as if the room was a perfect rectangle), without regard for any cutouts. Accordingly, the area of the actual room will typically be smaller than the product obtained by multiplying the stated length times width. All dimensions are approximate and may vary from actual construction; all floor plans and development plans are subject to change. The renderings illustrate and depict a lifestyle, however, amenities, features and specifications are subject to change without notice. Buyers should check with the sales center for the most current pricing. This is not intended to be an offer to sell, or solicitation to buy condominium units where prohibited by law. All real estate shown herein is subject to the US Federal Fair Housing Act of 1998.



GIRALDA PLACE RESIDENCES

RESIDENCE 8B

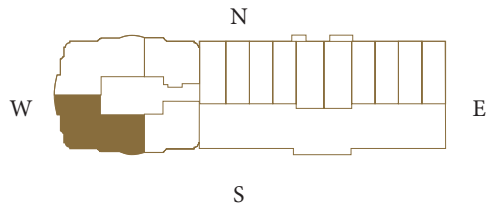
3 Bedrooms | 3.5 Bathrooms

Interior Area:

2,429 Sq. Ft. | 226 m²

Terrace/Balcony Area:

232 Sq.Ft. | 21.5 m²



ORAL REPRESENTATIONS CANNOT BE RELIED UPON AS CORRECTLY STATING REPRESENTATIONS OF THE DEVELOPER. FOR CORRECT REPRESENTATIONS, MAKE REFERENCE TO THIS BROCHURE AND TO THE DOCUMENTS REQUIRED BY SECTION 718.503, FLORIDA STATUTES, TO BE FURNISHED BY A DEVELOPER TO A BUYER OR LESSEE.

Sketches, renderings, graphic materials, plans, specifications, terms, conditions and statements contained herein are proposed only and are subject to architectural and other revisions at the sole discretion of the developer, builder, architect, or as may be required by law. Floor plans may not be to scale. Any furniture, appliances or decorator ready items depicted herein are shown for artistic and illustrative purposes only and are not included in the purchase and sale of the residence. Dimensions are based on the definition of the unit as provided in the declaration and the Florida Administrative Code, as such they include only the interior airspace between perimeter walls and exclude interior structural components. However, measurements of the rooms set forth on any floor plan are generally taken from the greatest point of each given room (as if the room was a perfect rectangle), without regard for any cutouts. Accordingly, the area of the actual room will typically be smaller than the product obtained by multiplying the stated length times width. All dimensions are approximate and may vary from actual construction; all floor plans and development plans are subject to change. The renderings illustrate and depict a lifestyle, however, amenities, features and specifications are subject to change without notice. Buyers should check with the sales center for the most current pricing. This is not intended to be an offer to sell, or solicitation to buy condominium units where prohibited by law. All real estate shown herein is subject to the US Federal Fair Housing Act of 1998.



GIRALDA PLACE

RESIDENCES

RESIDENCE PH

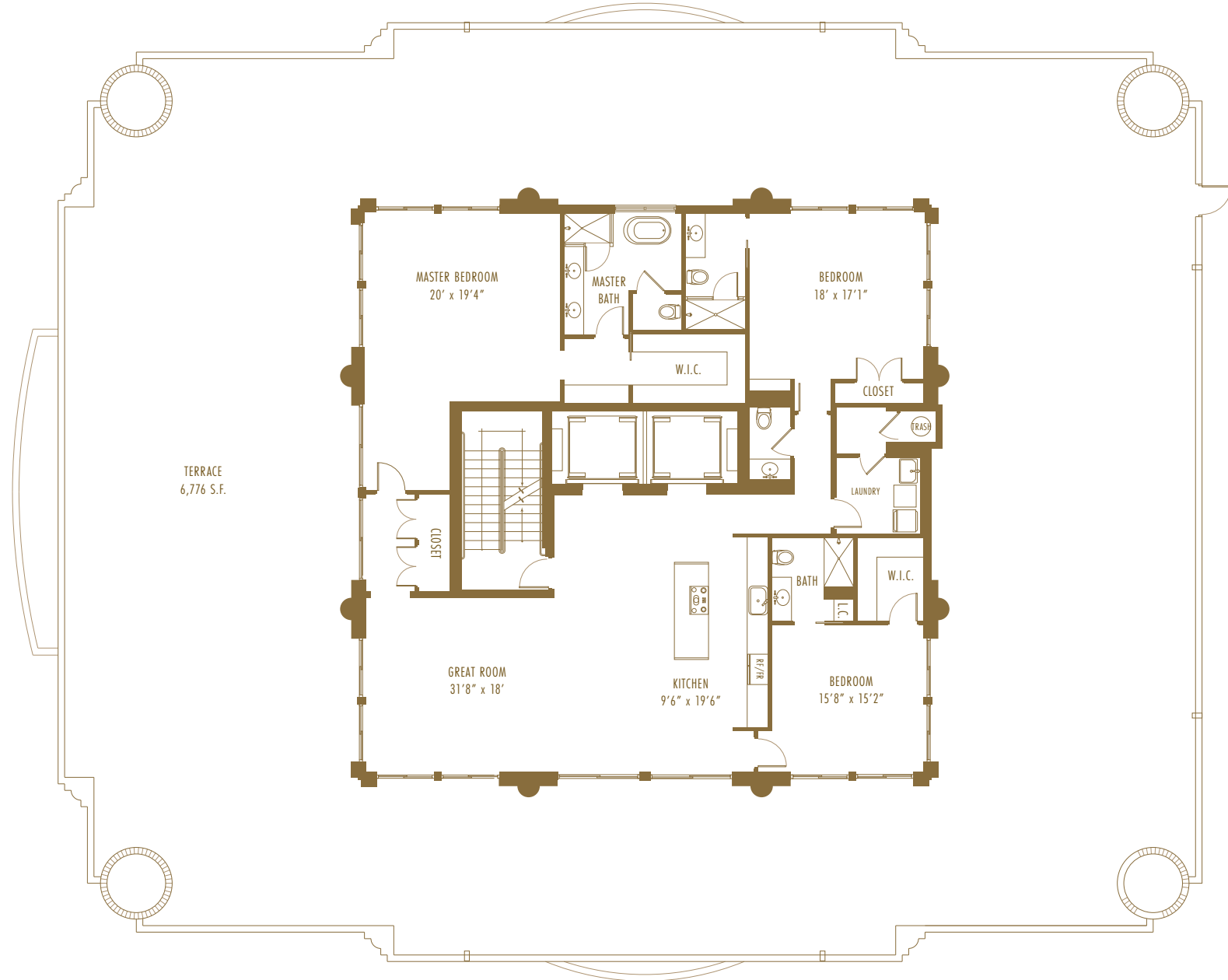
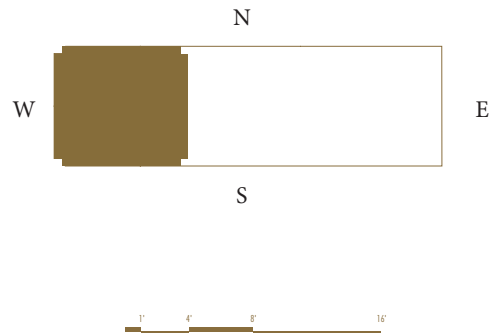
3 Bedrooms | 3.5 Bathrooms

Interior Area:

2,796 Sq. Ft. | 260 m²

Terrace/Balcony Area:

6,776 Sq.Ft. | 629.5 m²



ORAL REPRESENTATIONS CANNOT BE RELIED UPON AS CORRECTLY STATING REPRESENTATIONS OF THE DEVELOPER. FOR CORRECT REPRESENTATIONS, MAKE REFERENCE TO THIS BROCHURE AND TO THE DOCUMENTS REQUIRED BY SECTION 718.503, FLORIDA STATUTES, TO BE FURNISHED BY A DEVELOPER TO A BUYER OR LESSEE.

Sketches, renderings, graphic materials, plans, specifications, terms, conditions and statements contained herein are proposed only and are subject to architectural and other revisions at the sole discretion of the developer, builder, architect, or as may be required by law. Floor plans may not be to scale. Any furniture, appliances or decorator ready items depicted herein are shown for artistic and illustrative purposes only and are not included in the purchase and sale of the residence. Dimensions are based on the definition of the unit as provided in the declaration and the Florida Administrative Code, as such they include only the interior airspace between perimeter walls and exclude interior structural components. However, measurements of the rooms set forth on any floor plan are generally taken from the greatest point of each given room (as if the room was a perfect rectangle), without regard for any cutouts. Accordingly, the area of the actual room will typically be smaller than the product obtained by multiplying the stated length times width. All dimensions are approximate and may vary from actual construction; all floor plans and development plans are subject to change. The renderings illustrate and depict a lifestyle, however, amenities, features and specifications are subject to change without notice. Buyers should check with the sales center for the most current pricing. This is not intended to be an offer to sell, or solicitation to buy condominium units where prohibited by law. All real estate shown herein is subject to the US Federal Fair Housing Act of 1998.



GIRALDA PLACE

RESIDENCES

RESIDENCE PH

3 Bedrooms / 3.5 Bathrooms

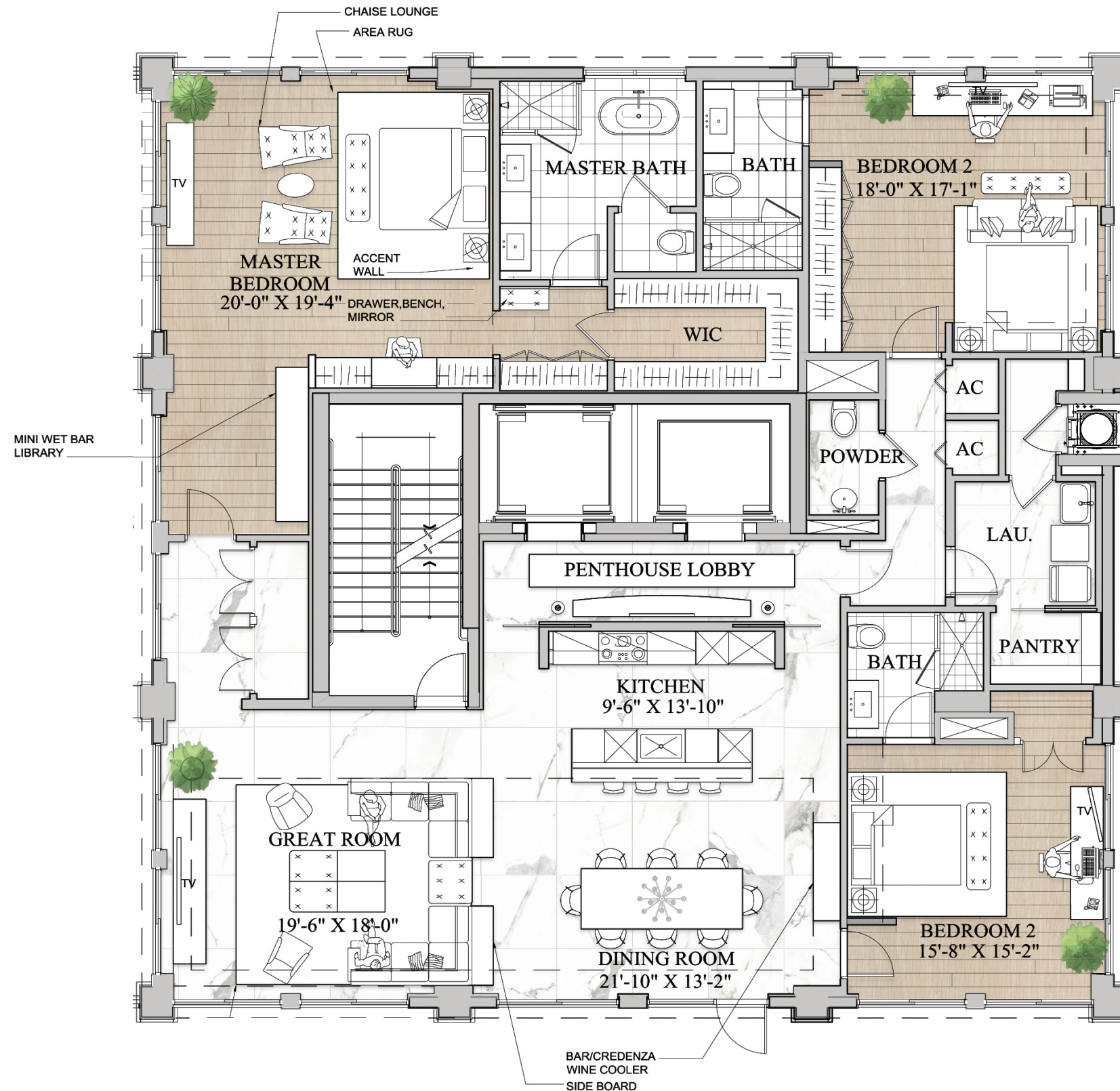
Interior Area:

2,796 Sq. Ft. / 260 m²

Terrace Area:

Open Terrace 5,837 Sq. Ft. / 542 m²

Covered Terrace 939 Sq. Ft. / 87m²



ORAL REPRESENTATIONS CANNOT BE RELIED UPON AS CORRECTLY STATING REPRESENTATIONS OF THE DEVELOPER. FOR CORRECT REPRESENTATIONS, MAKE REFERENCE TO THIS BROCHURE AND TO THE DOCUMENTS REQUIRED BY SECTION 718.503, FLORIDA STATUTES, TO BE FURNISHED BY A DEVELOPER TO A BUYER OR LESSEE. Sketches, renderings, graphic materials, plans, specifications, terms, conditions and statements contained herein are proposed only and are subject to architectural and other revisions at the sole discretion of the developer, builder, architect, or as may be required by law. Floor plans may not be to scale. Any furniture, appliances or decorator ready items depicted herein are shown for artistic and illustrative purposes only and are not included in the purchase and sale of the residence. Dimensions are based on the definition of the unit as provided in the declaration and the Florida Administrative Code, as such they include only the interior airspace between perimeter walls and exclude interior structural components. However, measurements of the rooms set forth on any floor plan are generally taken from the greatest point of each given room (as if the room was a perfect rectangle), without regard for any cut-outs. Accordingly, the area of the actual room will typically be smaller than the product obtained by multiplying the stated length times width. All dimensions are approximate and may vary from actual construction; all floor plans and development plans are subject to change. The renderings illustrate and depict a lifestyle, however, amenities, features and specifications are subject to change without notice. Buyers should check with the sales center for the most current pricing. This is not intended to be an offer to sell, or solicitation to buy condominium units where prohibited by law. All real estate shown herein is subject to the US Federal Fair Housing Act of 1998.



GIRALDA PLACE
RESIDENCES
RESIDENCE PH

3 Bedrooms | 3.5 Bathrooms

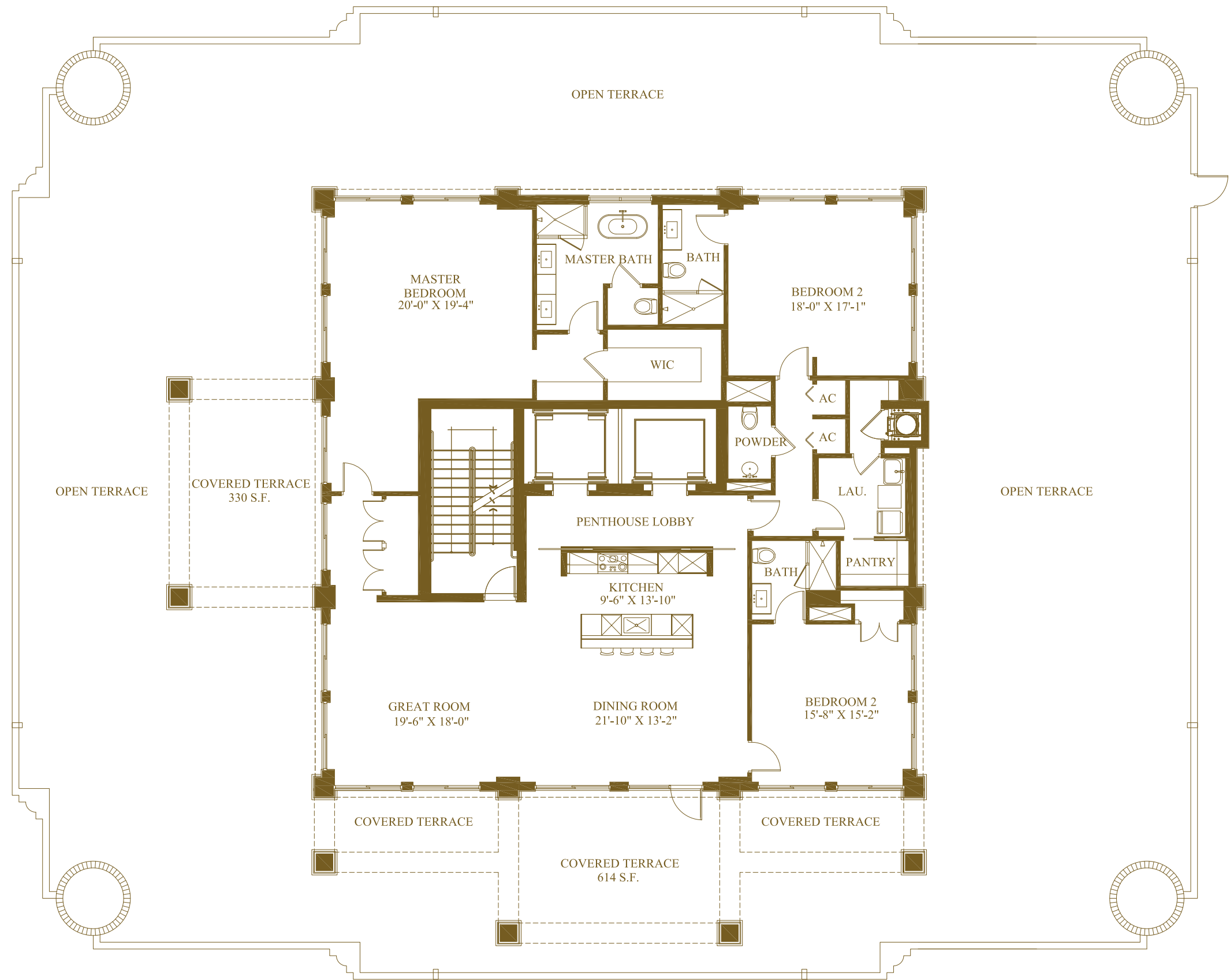
Interior Area:

2,796 sq. ft. | 260 m²

Terrace Area:

Covered Terrace 939 sq. ft. | 87 m²

Open Terrace 5,837 sq. ft. | 542 m²



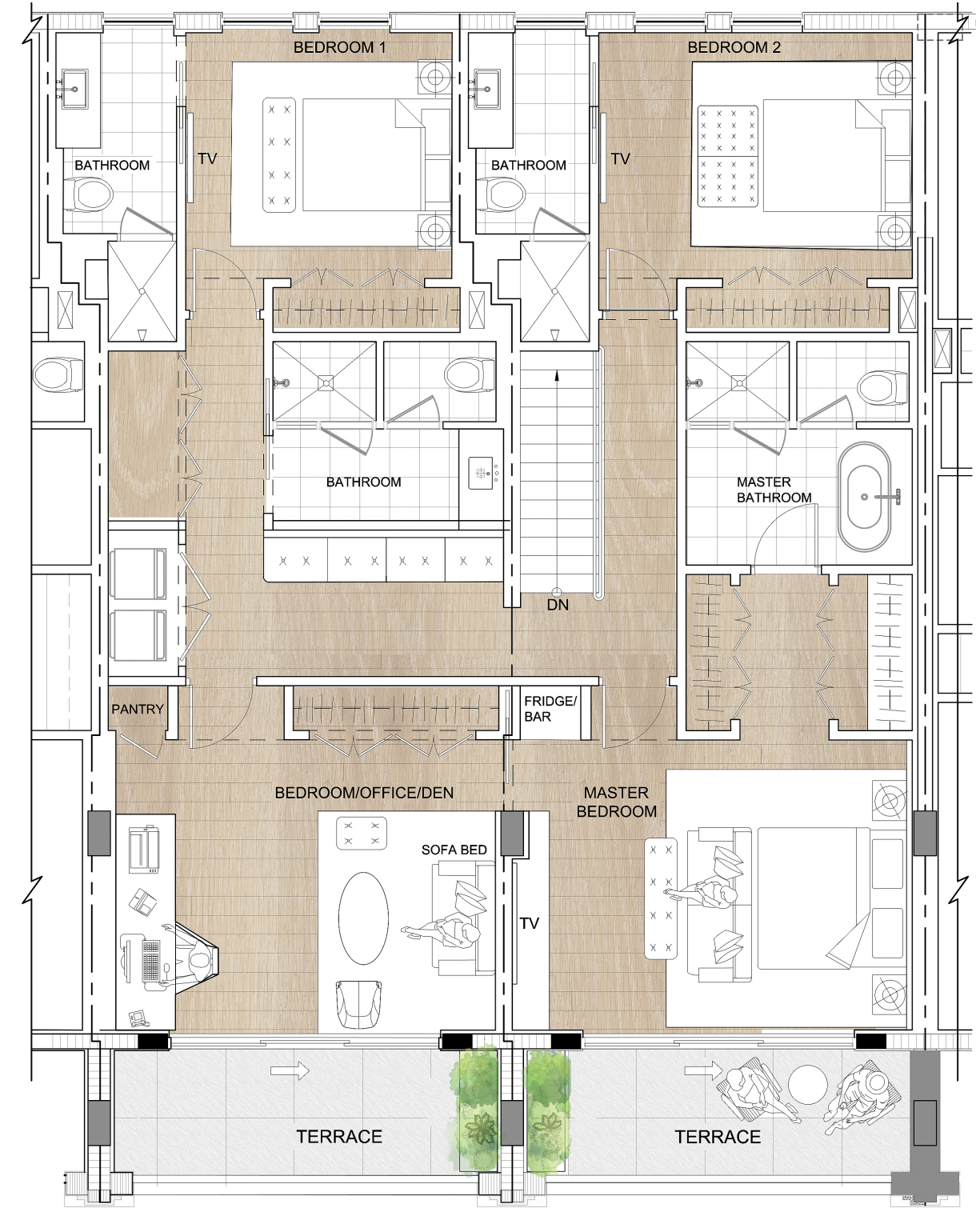
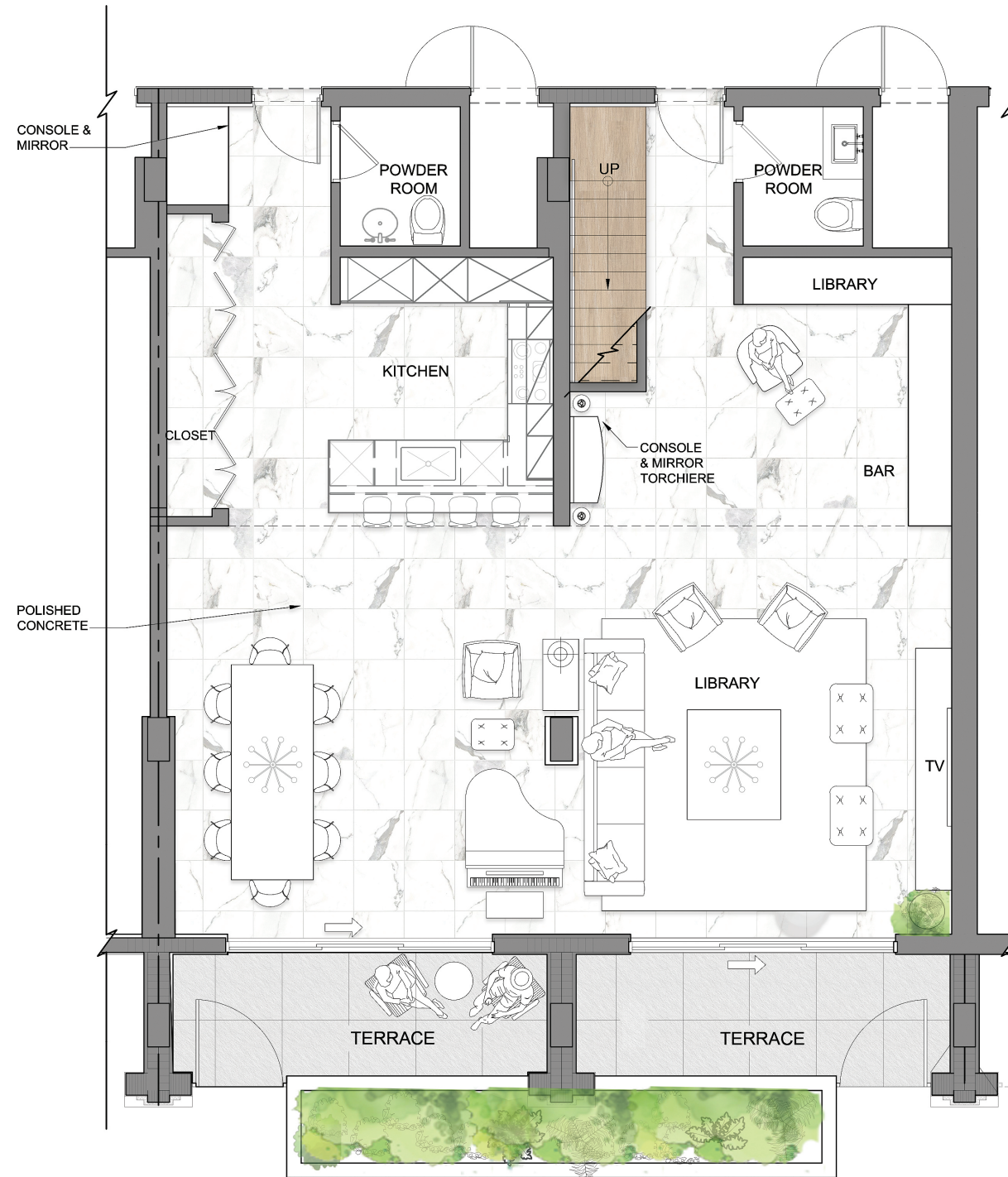
ORAL REPRESENTATIONS CANNOT BE RELIED UPON AS CORRECTLY STATING REPRESENTATIONS OF THE DEVELOPER. FOR CORRECT REPRESENTATIONS, MAKE REFERENCE TO THIS BROCHURE AND TO THE DOCUMENTS REQUIRED BY SECTION 718.503, FLORIDA STATUTES, TO BE FURNISHED BY A DEVELOPER TO A BUYER OR LESSEE.

Sketches, renderings, graphic materials, plans, specifications, terms, conditions and statements contained herein are proposed only and are subject to architectural and other revisions at the sole discretion of the developer, builder, architect, or as may be required by law. Floor plans may not be to scale. Any furniture, appliances or decorator ready items depicted herein are shown for artistic and illustrative purposes only and are not included in the purchase and sale of the residence. Dimensions are based on the definition of the unit as provided in the declaration and the Florida Administrative Code, as such they include only the interior airspace between perimeter walls and exclude interior structural components. However, measurements of the rooms set forth on any floor plan are generally taken from the greatest point of each given room (as if the room was a perfect rectangle), without regard for any cutouts. Accordingly, the area of the actual room will typically be smaller than the product obtained by multiplying the stated length times width. All dimensions are approximate and may vary from actual construction; all floor plans and development plans are subject to change. The renderings illustrate and depict a lifestyle, however, amenities, features and specifications are subject to change without notice. Buyers should check with the sales center for the most current pricing. This is not intended to be an offer to sell, or solicitation to buy condominium units where prohibited by law. All real estate shown herein is subject to the US Federal Fair Housing Act of 1998.



RESIDENCE TH 8-9

4 Bedrooms | 4 Bathrooms | 2 Powder Rooms
3,000 S.F. | 279 M²



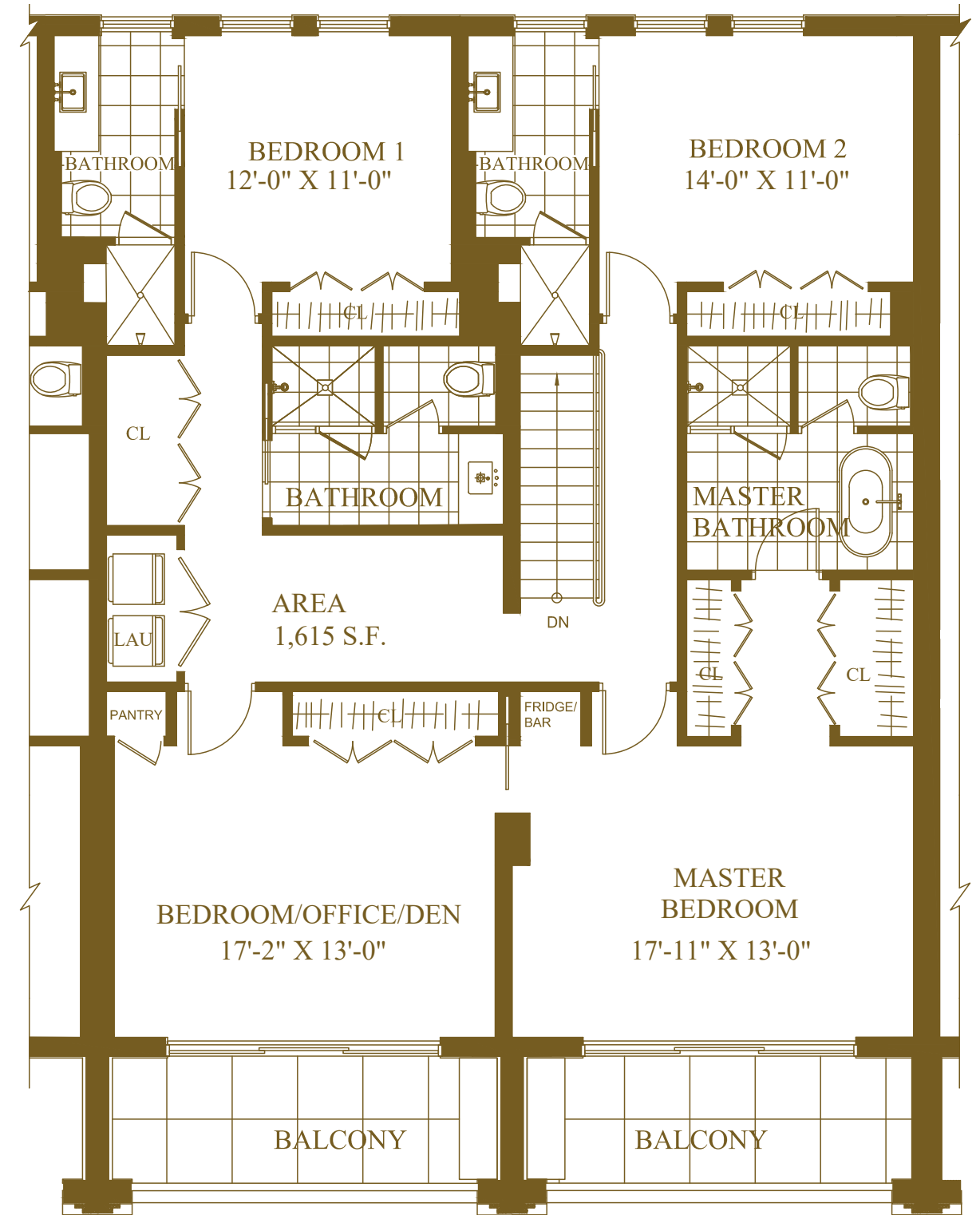
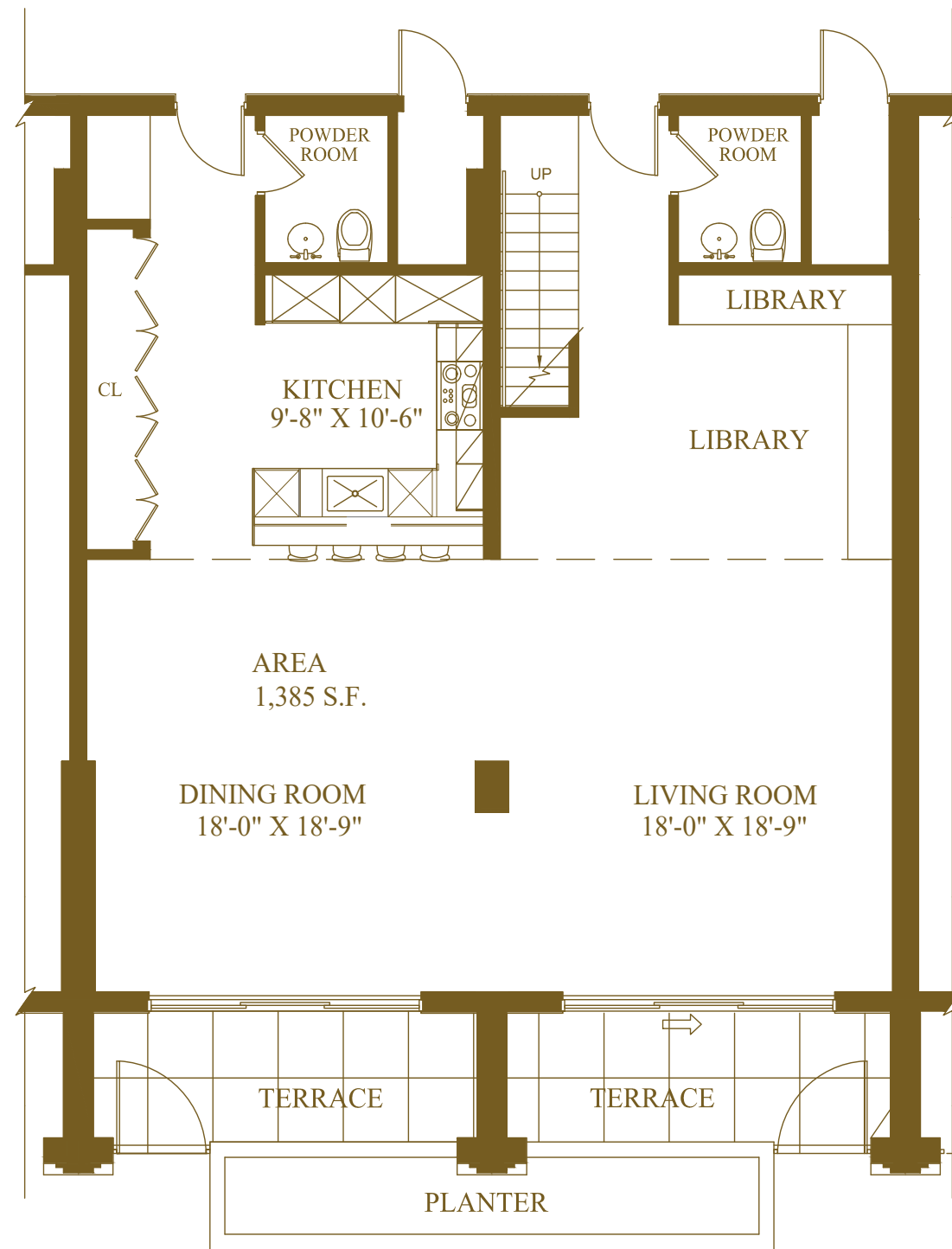
ORAL REPRESENTATIONS CANNOT BE RELIED UPON AS CORRECTLY STATING REPRESENTATIONS OF THE DEVELOPER. FOR CORRECT REPRESENTATIONS, MAKE REFERENCE TO THIS BROCHURE AND TO THE DOCUMENTS REQUIRED BY SECTION 718.503, FLORIDA STATUTES, TO BE FURNISHED BY A DEVELOPER TO A BUYER OR LESSEE.

Sketches, renderings, graphic materials, plans, specifications, terms, conditions and statements contained herein are proposed only and are subject to architectural and other revisions at the sole discretion of the developer, builder, architect, or as may be required by law. Floor plans may not be to scale. Any furniture, appliances or decorator ready items depicted herein are shown for artistic and illustrative purposes only and are not included in the purchase and sale of the residence. Dimensions are based on the definition of the unit as provided in the declaration and the Florida Administrative Code, as such they include only the interior airspace between perimeter walls and exclude interior structural components. However, measurements of the rooms set forth on any floor plan are generally taken from the greatest point of each given room (as if the room was a perfect rectangle), without regard for any cutouts. Accordingly, the area of the actual room will typically be smaller than the product obtained by multiplying the stated length times width. All dimensions are approximate and may vary from actual construction; all floor plans and development plans are subject to change. The renderings illustrate and depict a lifestyle, however, amenities, features and specifications are subject to change without notice. Buyers should check with the sales center for the most current pricing. This is not intended to be an offer to sell, or solicitation to buy condominium units where prohibited by law. All real estate shown herein is subject to the US Federal Fair Housing Act of 1998.



RESIDENCE TH 8-9

4 Bedrooms | 4 Bathrooms | 2 Powder Rooms
3,000 S.F. | 279 M²



ORAL REPRESENTATIONS CANNOT BE RELIED UPON AS CORRECTLY STATING REPRESENTATIONS OF THE DEVELOPER. FOR CORRECT REPRESENTATIONS, MAKE REFERENCE TO THIS BROCHURE AND TO THE DOCUMENTS REQUIRED BY SECTION 718.503, FLORIDA STATUTES, TO BE FURNISHED BY A DEVELOPER TO A BUYER OR LESSEE. Sketches, renderings, graphic materials, plans, specifications, terms, conditions and statements contained herein are proposed only and are subject to architectural and other revisions at the sole discretion of the developer, builder, architect, or as may be required by law. Floor plans may not be to scale. Any furniture, appliances or decorator ready items depicted herein are shown for artistic and illustrative purposes only and are not included in the purchase and sale of the residence. Dimensions are based on the definition of the unit as provided in the declaration and the Florida Administrative Code, as such they include only the interior airspace between perimeter walls and exclude interior structural components. However, measurements of the rooms set forth on any floor plan are generally taken from the greatest point of each given room (as if the room was a perfect rectangle), without regard for any cutouts. Accordingly, the area of the actual room will typically be smaller than the product obtained by multiplying the stated length times width. All dimensions are approximate and may vary from actual construction; all floor plans and development plans are subject to change. The renderings illustrate and depict a lifestyle, however, amenities, features and specifications are subject to change without notice. Buyers should check with the sales center for the most current pricing. This is not intended to be an offer to sell, or solicitation to buy condominium units where prohibited by law. All real estate shown herein is subject to the US Federal Fair Housing Act of 1998.



GIRALDA PLACE RESIDENCES

RESIDENCE C1

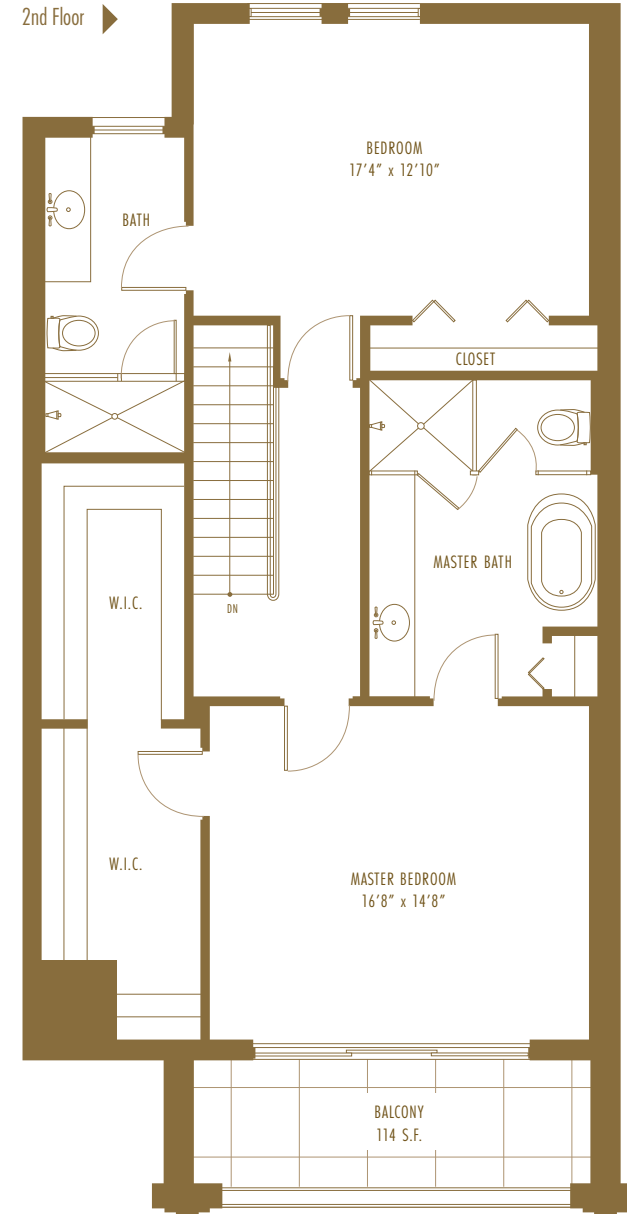
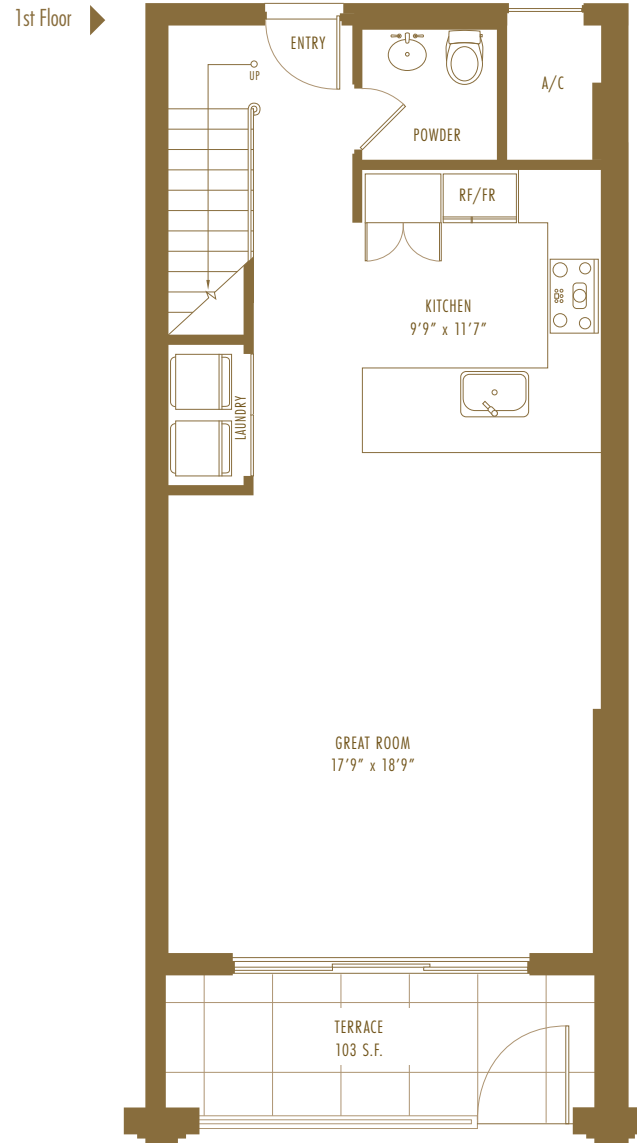
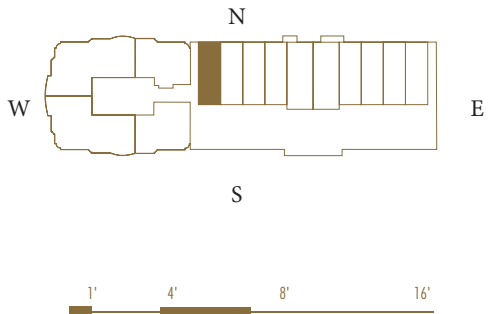
2 Bedrooms | 2.5 Bathrooms

Interior Area:

1,644 Sq. Ft. | 153 m²

Terrace/Balcony Area:

217 Sq.Ft. | 20 m²



ORAL REPRESENTATIONS CANNOT BE RELIED UPON AS CORRECTLY STATING REPRESENTATIONS OF THE DEVELOPER. FOR CORRECT REPRESENTATIONS, MAKE REFERENCE TO THIS BROCHURE AND TO THE DOCUMENTS REQUIRED BY SECTION 718.503, FLORIDA STATUTES, TO BE FURNISHED BY A DEVELOPER TO A BUYER OR LESSEE.

Sketches, renderings, graphic materials, plans, specifications, terms, conditions and statements contained herein are proposed only and are subject to architectural and other revisions at the sole discretion of the developer, builder, architect, or as may be required by law. Floor plans may not be to scale. Any furniture, appliances or decorator ready items depicted herein are shown for artistic and illustrative purposes only and are not included in the purchase and sale of the residence. Dimensions are based on the definition of the unit as provided in the declaration and the Florida Administrative Code, as such they include only the interior airspace between perimeter walls and exclude interior structural components. However, measurements of the rooms set forth on any floor plan are generally taken from the greatest point of each given room (as if the room was a perfect rectangle), without regard for any cutouts. Accordingly, the area of the actual room will typically be smaller than the product obtained by multiplying the stated length times width. All dimensions are approximate and may vary from actual construction; all floor plans and development plans are subject to change. The renderings illustrate and depict a lifestyle, however, amenities, features and specifications are subject to change without notice. Buyers should check with the sales center for the most current pricing. This is not intended to be an offer to sell, or solicitation to buy condominium units where prohibited by law. All real estate shown herein is subject to the US Federal Fair Housing Act of 1998.



GIRALDA PLACE RESIDENCES

RESIDENCE C2

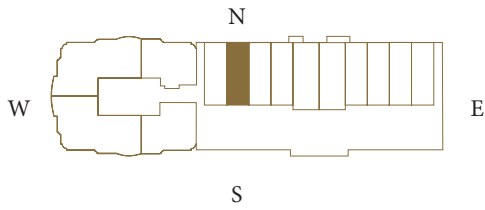
2 Bedrooms | 2.5 Bathrooms

Interior Area:

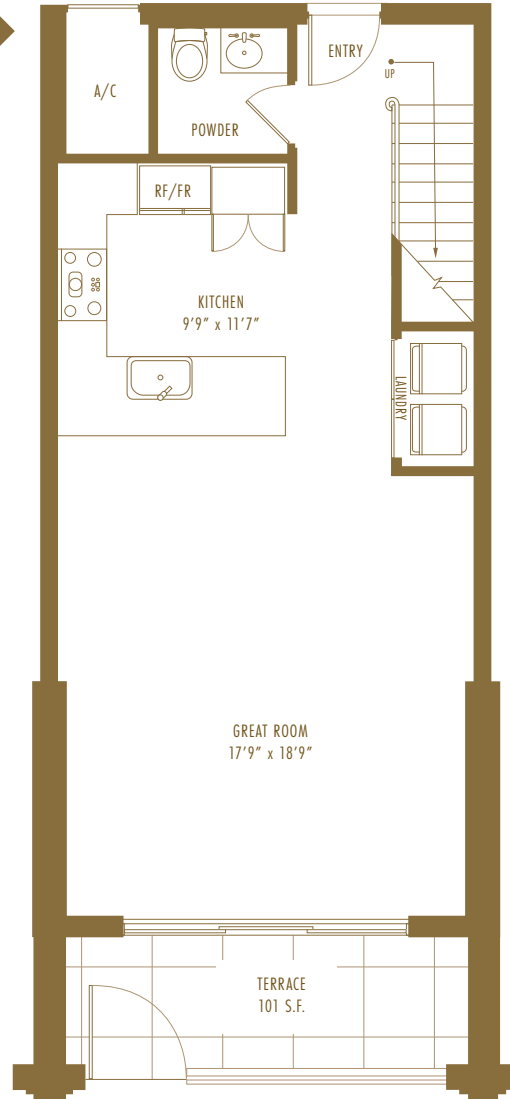
1,428 Sq. Ft. | 133 m²

Terrace/Balcony Area:

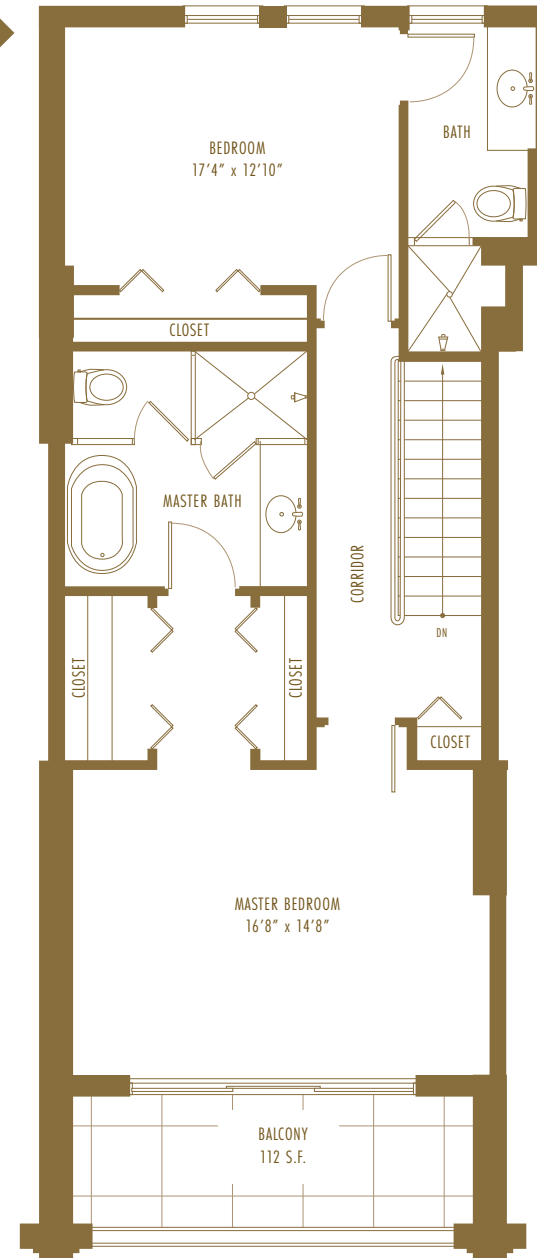
213 Sq.Ft. | 20 m²



1st Floor ▶



2nd Floor ▶



ORAL REPRESENTATIONS CANNOT BE RELIED UPON AS CORRECTLY STATING REPRESENTATIONS OF THE DEVELOPER. FOR CORRECT REPRESENTATIONS, MAKE REFERENCE TO THIS BROCHURE AND TO THE DOCUMENTS REQUIRED BY SECTION 718.503, FLORIDA STATUTES, TO BE FURNISHED BY A DEVELOPER TO A BUYER OR LESSEE.

Sketches, renderings, graphic materials, plans, specifications, terms, conditions and statements contained herein are proposed only and are subject to architectural and other revisions at the sole discretion of the developer, builder, architect, or as may be required by law. Floor plans may not be to scale. Any furniture, appliances or decorator ready items depicted herein are shown for artistic and illustrative purposes only and are not included in the purchase and sale of the residence. Dimensions are based on the definition of the unit as provided in the declaration and the Florida Administrative Code, as such they include only the interior airspace between perimeter walls and exclude interior structural components. However, measurements of the rooms set forth on any floor plan are generally taken from the greatest point of each given room (as if the room was a perfect rectangle), without regard for any cutouts. Accordingly, the area of the actual room will typically be smaller than the product obtained by multiplying the stated length times width. All dimensions are approximate and may vary from actual construction; all floor plans and development plans are subject to change. The renderings illustrate and depict a lifestyle, however, amenities, features and specifications are subject to change without notice. Buyers should check with the sales center for the most current pricing. This is not intended to be an offer to sell, or solicitation to buy condominium units where prohibited by law. All real estate shown herein is subject to the US Federal Fair Housing Act of 1998.



GIRALDA PLACE RESIDENCES

RESIDENCE C3

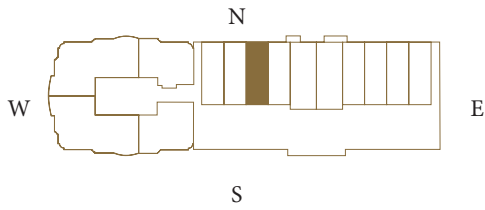
2 Bedrooms | 2.5 Bathrooms

Interior Area:

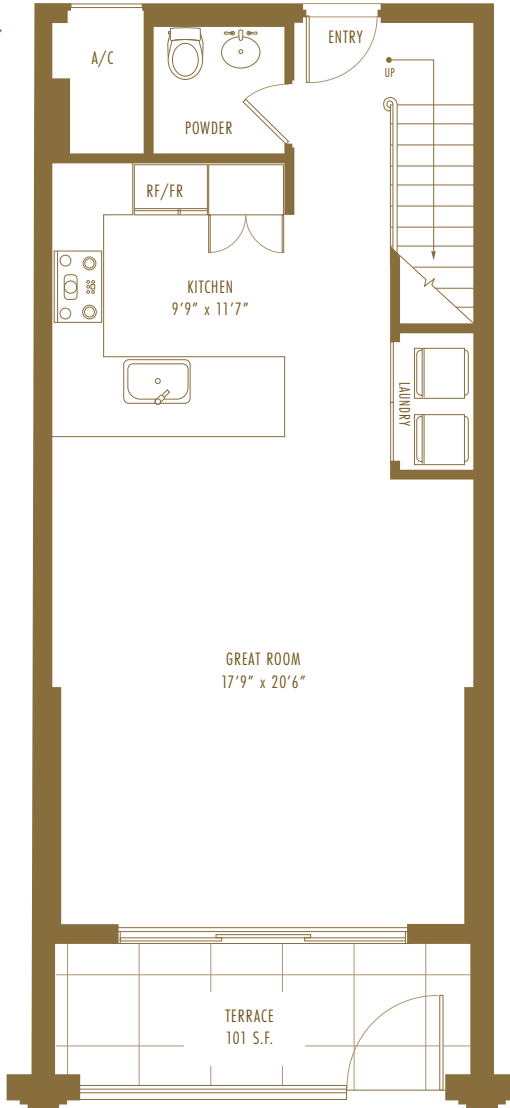
1,399 Sq. Ft. | 130 m²

Terrace/Balcony Area:

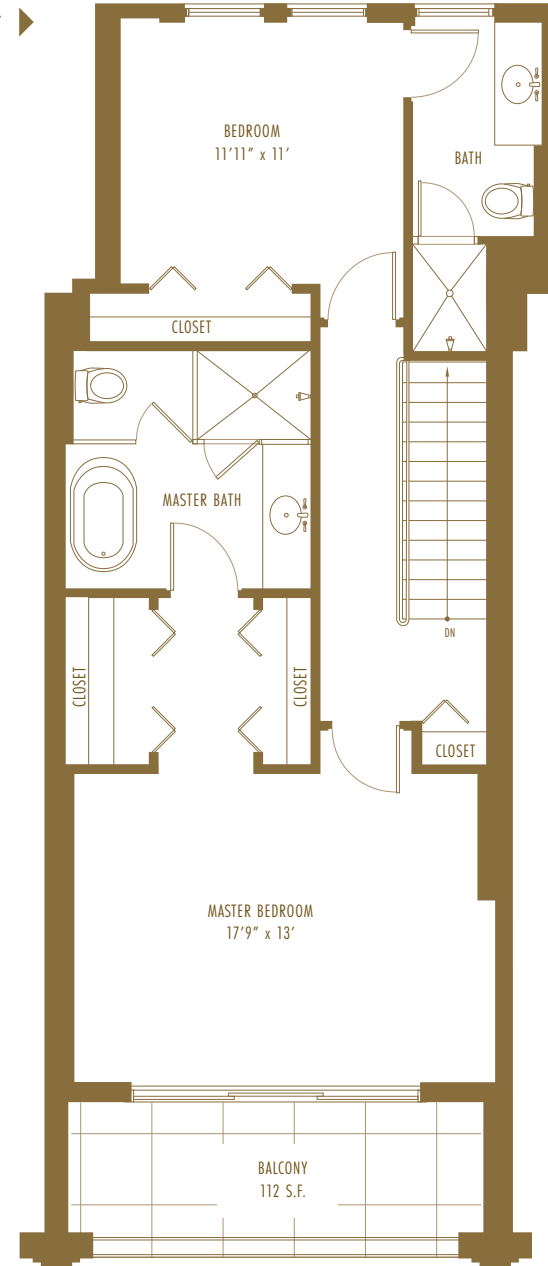
213 Sq.Ft. | 20 m²



1st Floor ▶



2nd Floor ▶



ORAL REPRESENTATIONS CANNOT BE RELIED UPON AS CORRECTLY STATING REPRESENTATIONS OF THE DEVELOPER. FOR CORRECT REPRESENTATIONS, MAKE REFERENCE TO THIS BROCHURE AND TO THE DOCUMENTS REQUIRED BY SECTION 718.503, FLORIDA STATUTES, TO BE FURNISHED BY A DEVELOPER TO A BUYER OR LESSEE.

Sketches, renderings, graphic materials, plans, specifications, terms, conditions and statements contained herein are proposed only and are subject to architectural and other revisions at the sole discretion of the developer, builder, architect, or as may be required by law. Floor plans may not be to scale. Any furniture, appliances or decorator ready items depicted herein are shown for artistic and illustrative purposes only and are not included in the purchase and sale of the residence. Dimensions are based on the definition of the unit as provided in the declaration and the Florida Administrative Code, as such they include only the interior airspace between perimeter walls and exclude interior structural components. However, measurements of the rooms set forth on any floor plan are generally taken from the greatest point of each given room (as if the room was a perfect rectangle), without regard for any cutouts. Accordingly, the area of the actual room will typically be smaller than the product obtained by multiplying the stated length times width. All dimensions are approximate and may vary from actual construction; all floor plans and development plans are subject to change. The renderings illustrate and depict a lifestyle, however, amenities, features and specifications are subject to change without notice. Buyers should check with the sales center for the most current pricing. This is not intended to be an offer to sell, or solicitation to buy condominium units where prohibited by law. All real estate shown herein is subject to the US Federal Fair Housing Act of 1998.



GIRALDA PLACE RESIDENCES

RESIDENCE C4

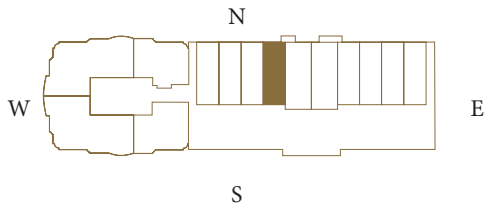
2 Bedrooms | 2.5 Bathrooms

Interior Area:

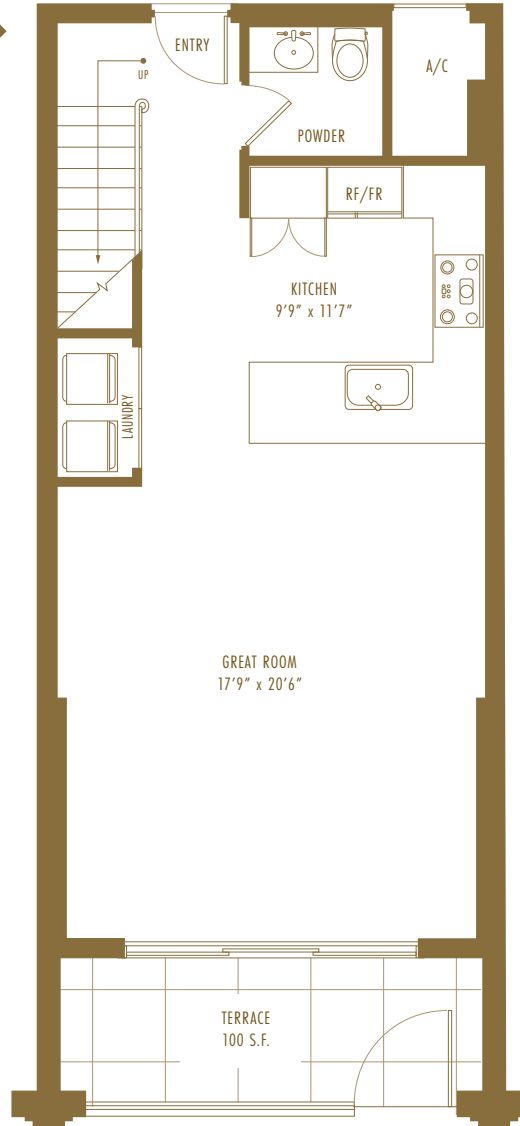
1,395 Sq. Ft. | 130 m²

Terrace/Balcony Area:

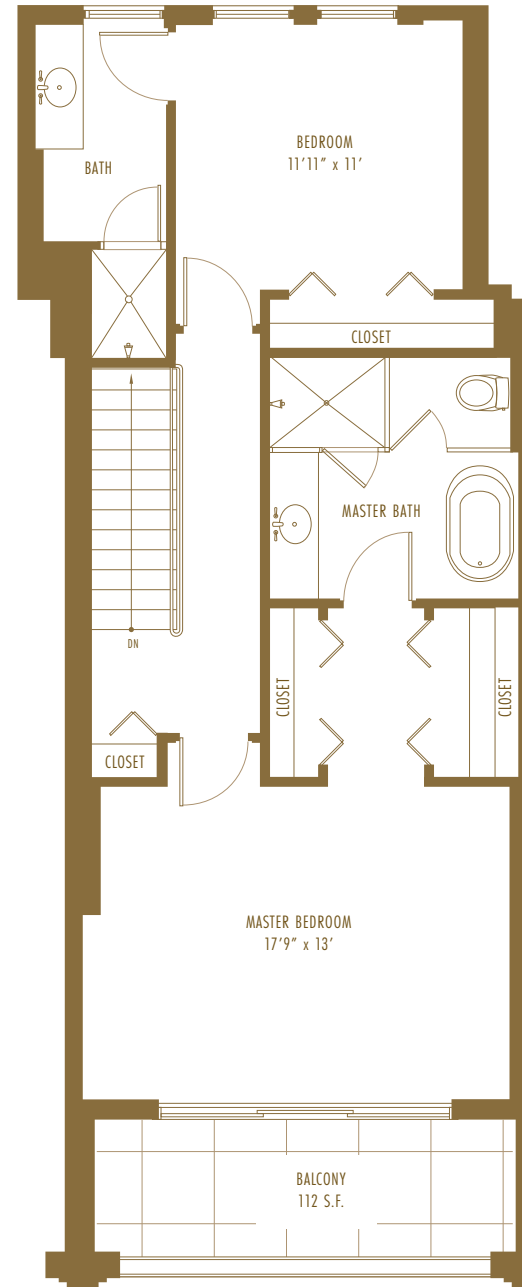
212 Sq.Ft. | 19 m²



1st Floor ▶



2nd Floor ▶



ORAL REPRESENTATIONS CANNOT BE RELIED UPON AS CORRECTLY STATING REPRESENTATIONS OF THE DEVELOPER. FOR CORRECT REPRESENTATIONS, MAKE REFERENCE TO THIS BROCHURE AND TO THE DOCUMENTS REQUIRED BY SECTION 718.503, FLORIDA STATUTES, TO BE FURNISHED BY A DEVELOPER TO A BUYER OR LESSEE.

Sketches, renderings, graphic materials, plans, specifications, terms, conditions and statements contained herein are proposed only and are subject to architectural and other revisions at the sole discretion of the developer, builder, architect, or as may be required by law. Floor plans may not be to scale. Any furniture, appliances or decorator ready items depicted herein are shown for artistic and illustrative purposes only and are not included in the purchase and sale of the residence. Dimensions are based on the definition of the unit as provided in the declaration and the Florida Administrative Code, as such they include only the interior airspace between perimeter walls and exclude interior structural components. However, measurements of the rooms set forth on any floor plan are generally taken from the greatest point of each given room (as if the room was a perfect rectangle), without regard for any cutouts. Accordingly, the area of the actual room will typically be smaller than the product obtained by multiplying the stated length times width. All dimensions are approximate and may vary from actual construction; all floor plans and development plans are subject to change. The renderings illustrate and depict a lifestyle, however, amenities, features and specifications are subject to change without notice. Buyers should check with the sales center for the most current pricing. This is not intended to be an offer to sell, or solicitation to buy condominium units where prohibited by law. All real estate shown herein is subject to the US Federal Fair Housing Act of 1998.



GIRALDA PLACE RESIDENCES

RESIDENCE C5

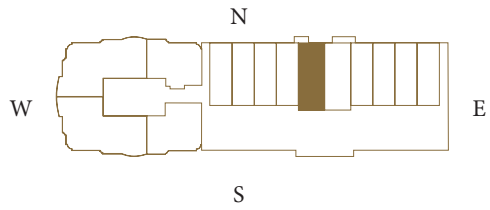
2 Bedrooms | 2.5 Bathrooms

Interior Area:

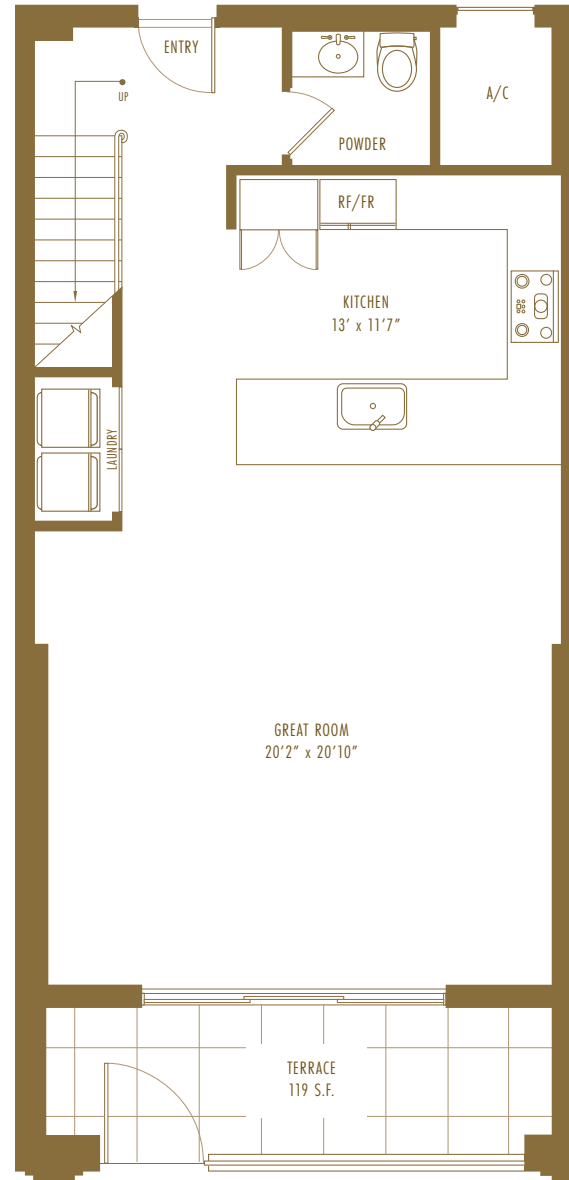
1,722 Sq. Ft. | 160 m²

Terrace/Balcony Area:

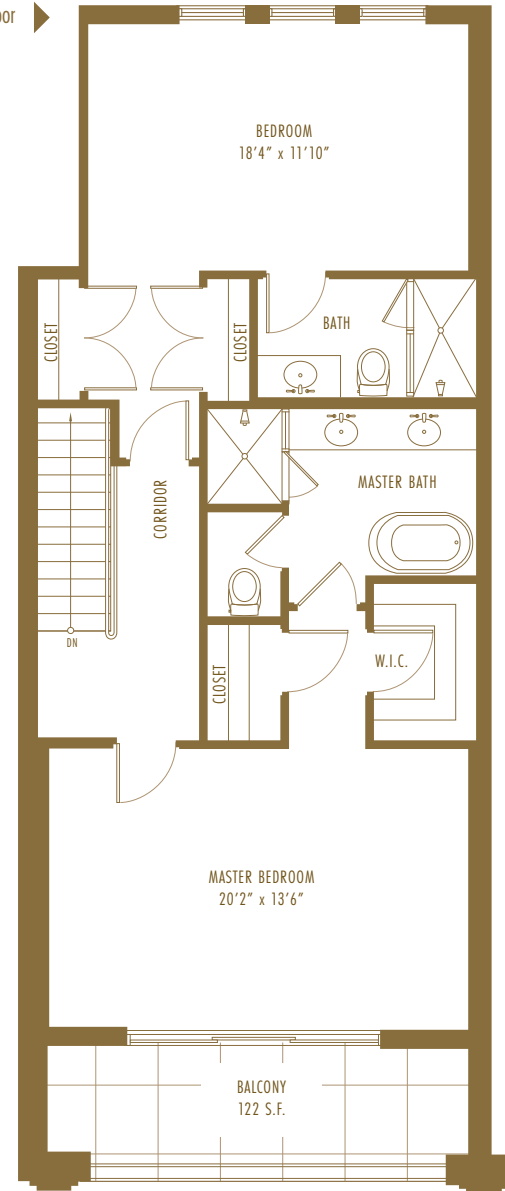
254 Sq.Ft. | 23.5 m²



1st Floor ▶



2nd Floor ▶



ORAL REPRESENTATIONS CANNOT BE RELIED UPON AS CORRECTLY STATING REPRESENTATIONS OF THE DEVELOPER. FOR CORRECT REPRESENTATIONS, MAKE REFERENCE TO THIS BROCHURE AND TO THE DOCUMENTS REQUIRED BY SECTION 718.503, FLORIDA STATUTES, TO BE FURNISHED BY A DEVELOPER TO A BUYER OR LESSEE.

Sketches, renderings, graphic materials, plans, specifications, terms, conditions and statements contained herein are proposed only and are subject to architectural and other revisions at the sole discretion of the developer, builder, architect, or as may be required by law. Floor plans may not be to scale. Any furniture, appliances or decorator ready items depicted herein are shown for artistic and illustrative purposes only and are not included in the purchase and sale of the residence. Dimensions are based on the definition of the unit as provided in the declaration and the Florida Administrative Code, as such they include only the interior airspace between perimeter walls and exclude interior structural components. However, measurements of the rooms set forth on any floor plan are generally taken from the greatest point of each given room (as if the room was a perfect rectangle), without regard for any cutouts. Accordingly, the area of the actual room will typically be smaller than the product obtained by multiplying the stated length times width. All dimensions are approximate and may vary from actual construction; all floor plans and development plans are subject to change. The renderings illustrate and depict a lifestyle, however, amenities, features and specifications are subject to change without notice. Buyers should check with the sales center for the most current pricing. This is not intended to be an offer to sell, or solicitation to buy condominium units where prohibited by law. All real estate shown herein is subject to the US Federal Fair Housing Act of 1998.



GIRALDA PLACE RESIDENCES

RESIDENCE C6

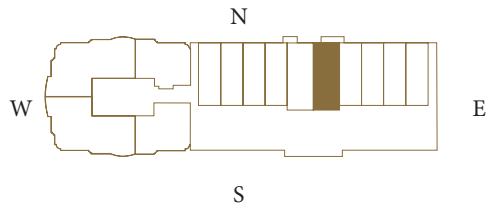
2 Bedrooms | 2.5 Bathrooms

Interior Area:

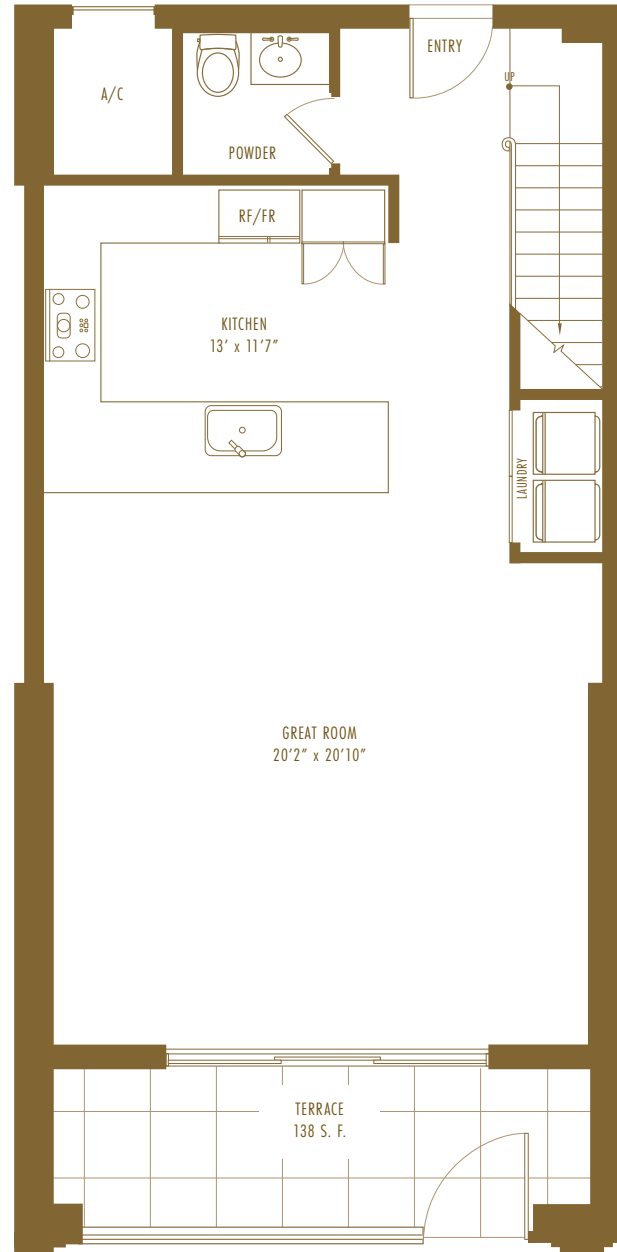
1,721 Sq. Ft. | 160 m²

Terrace/Balcony Area:

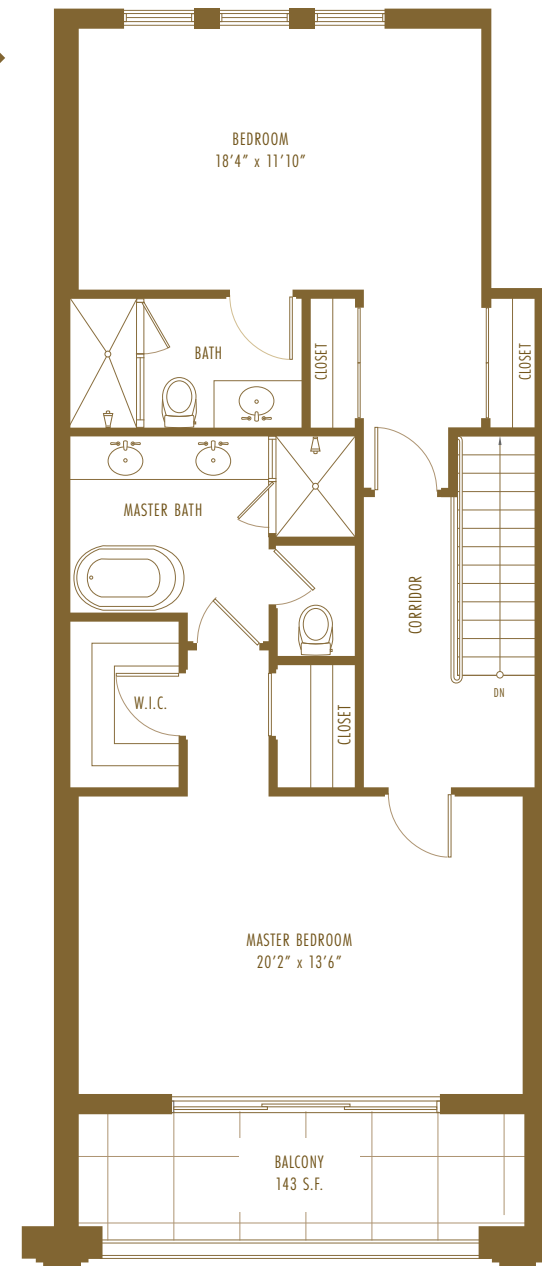
254 Sq.Ft. | 23.5 m²



1st Floor ▶



2nd Floor ▶



ORAL REPRESENTATIONS CANNOT BE RELIED UPON AS CORRECTLY STATING REPRESENTATIONS OF THE DEVELOPER. FOR CORRECT REPRESENTATIONS, MAKE REFERENCE TO THIS BROCHURE AND TO THE DOCUMENTS REQUIRED BY SECTION 718.503, FLORIDA STATUTES, TO BE FURNISHED BY A DEVELOPER TO A BUYER OR LESSEE.

Sketches, renderings, graphic materials, plans, specifications, terms, conditions and statements contained herein are proposed only and are subject to architectural and other revisions at the sole discretion of the developer, builder, architect, or as may be required by law. Floor plans may not be to scale. Any furniture, appliances or decorator ready items depicted herein are shown for artistic and illustrative purposes only and are not included in the purchase and sale of the residence. Dimensions are based on the definition of the unit as provided in the declaration and the Florida Administrative Code, as such they include only the interior airspace between perimeter walls and exclude interior structural components. However, measurements of the rooms set forth on any floor plan are generally taken from the greatest point of each given room (as if the room was a perfect rectangle), without regard for any cutouts. Accordingly, the area of the actual room will typically be smaller than the product obtained by multiplying the stated length times width. All dimensions are approximate and may vary from actual construction; all floor plans and development plans are subject to change. The renderings illustrate and depict a lifestyle, however, amenities, features and specifications are subject to change without notice. Buyers should check with the sales center for the most current pricing. This is not intended to be an offer to sell, or solicitation to buy condominium units where prohibited by law. All real estate shown herein is subject to the US Federal Fair Housing Act of 1998.



GIRALDA PLACE RESIDENCES

RESIDENCE C7

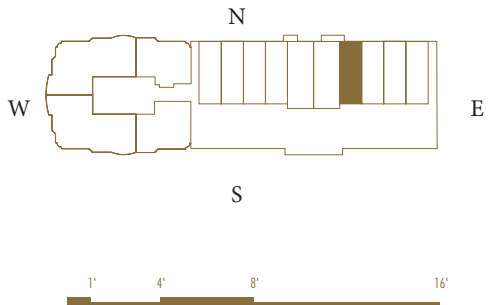
2 Bedrooms | 2.5 Bathrooms

Interior Area:

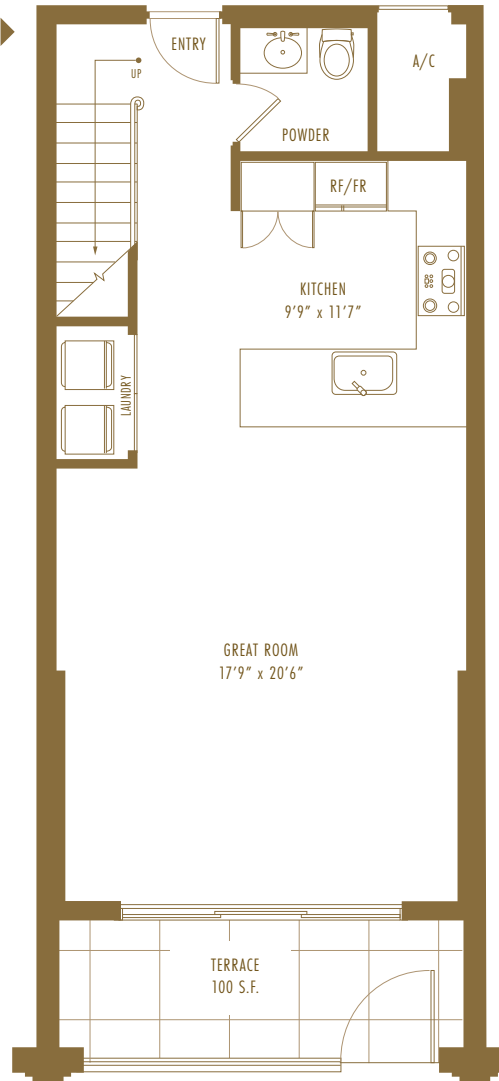
1,396 Sq. Ft. | 130 m²

Terrace/Balcony Area:

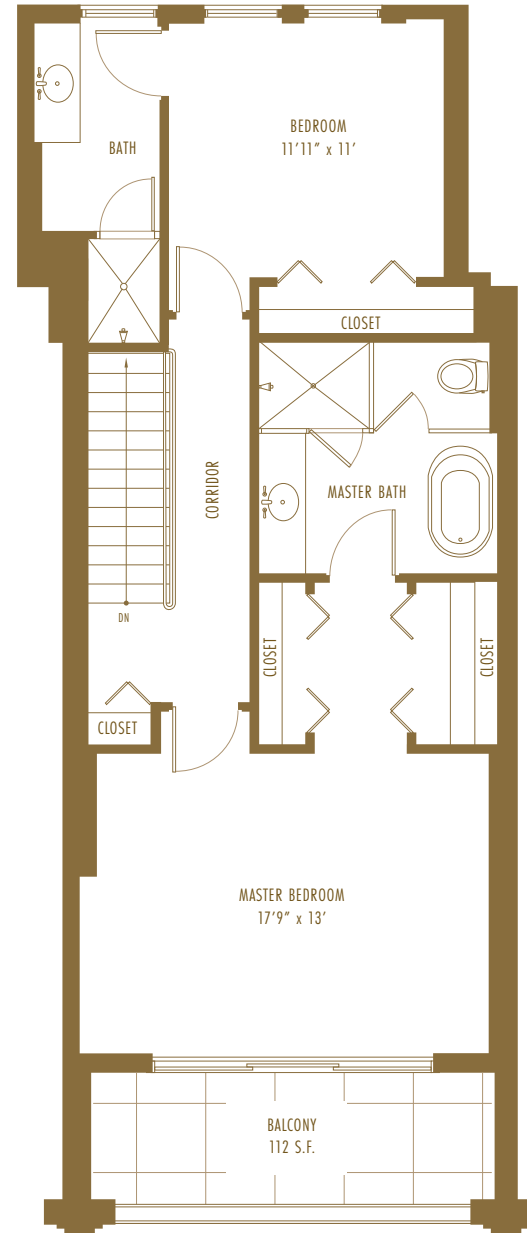
212 Sq.Ft. | 19 m²



1st Floor ▶



2nd Floor ▶



ORAL REPRESENTATIONS CANNOT BE RELIED UPON AS CORRECTLY STATING REPRESENTATIONS OF THE DEVELOPER. FOR CORRECT REPRESENTATIONS, MAKE REFERENCE TO THIS BROCHURE AND TO THE DOCUMENTS REQUIRED BY SECTION 718.503, FLORIDA STATUTES, TO BE FURNISHED BY A DEVELOPER TO A BUYER OR LESSEE.

Sketches, renderings, graphic materials, plans, specifications, terms, conditions and statements contained herein are proposed only and are subject to architectural and other revisions at the sole discretion of the developer, builder, architect, or as may be required by law. Floor plans may not be to scale. Any furniture, appliances or decorator ready items depicted herein are shown for artistic and illustrative purposes only and are not included in the purchase and sale of the residence. Dimensions are based on the definition of the unit as provided in the declaration and the Florida Administrative Code, as such they include only the interior airspace between perimeter walls and exclude interior structural components. However, measurements of the rooms set forth on any floor plan are generally taken from the greatest point of each given room (as if the room was a perfect rectangle), without regard for any cutouts. Accordingly, the area of the actual room will typically be smaller than the product obtained by multiplying the stated length times width. All dimensions are approximate and may vary from actual construction; all floor plans and development plans are subject to change. The renderings illustrate and depict a lifestyle, however, amenities, features and specifications are subject to change without notice. Buyers should check with the sales center for the most current pricing. This is not intended to be an offer to sell, or solicitation to buy condominium units where prohibited by law. All real estate shown herein is subject to the US Federal Fair Housing Act of 1998.



GIRALDA PLACE RESIDENCES

RESIDENCE C8

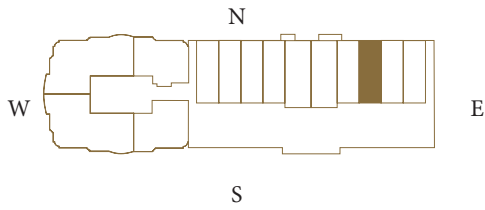
2 Bedrooms | 2.5 Bathrooms

Interior Area:

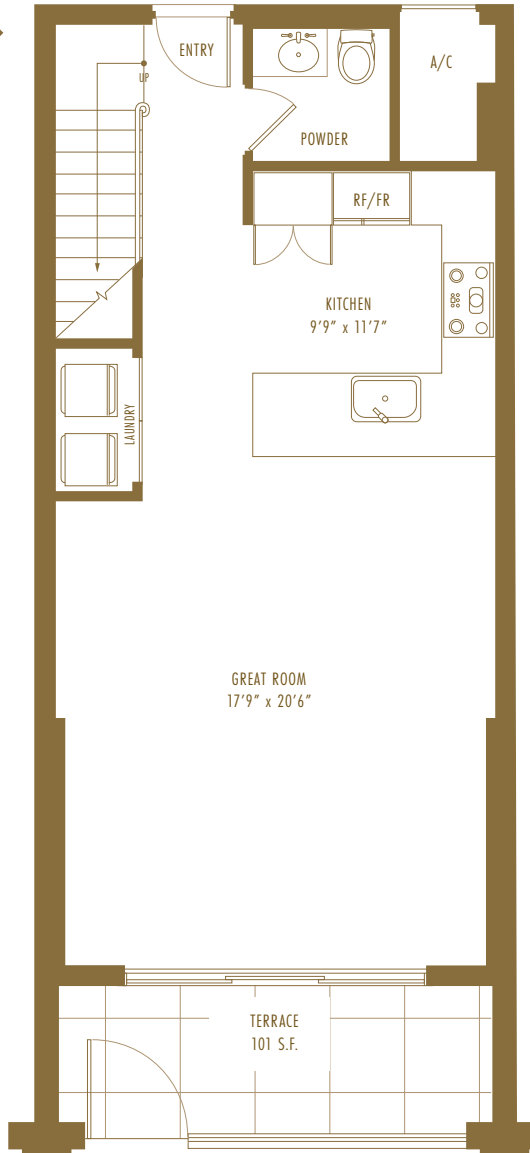
1,398 Sq. Ft. | 130 m²

Terrace/Balcony Area:

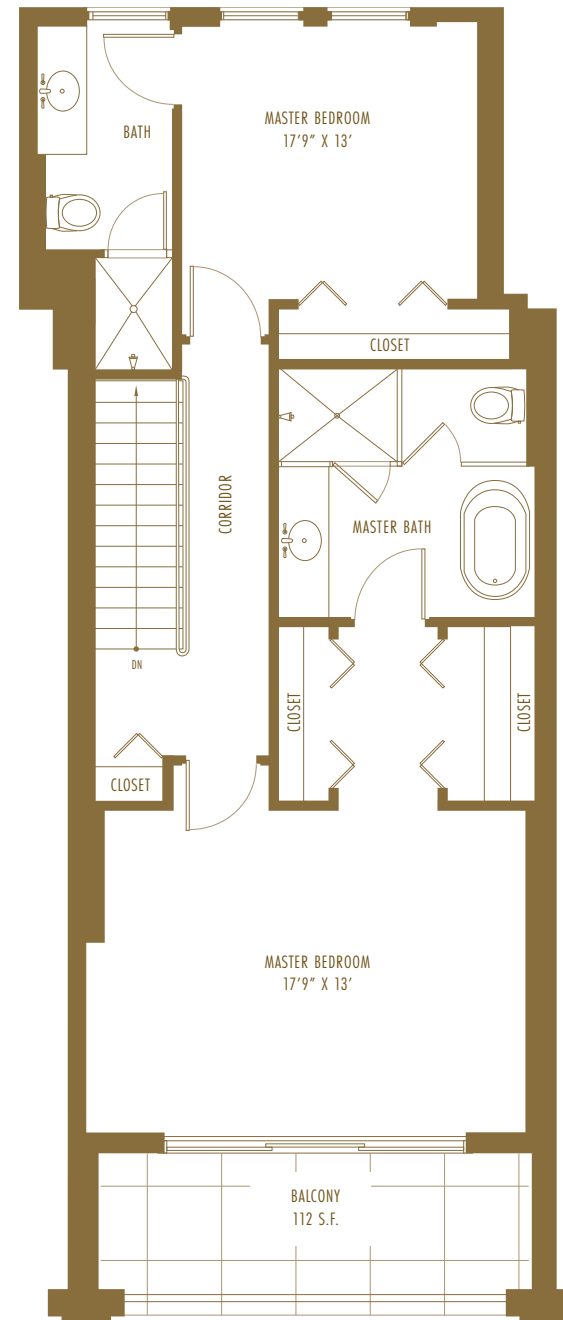
213 Sq.Ft. | 20 m²



1st Floor ▶



2nd Floor ▶



ORAL REPRESENTATIONS CANNOT BE RELIED UPON AS CORRECTLY STATING REPRESENTATIONS OF THE DEVELOPER. FOR CORRECT REPRESENTATIONS, MAKE REFERENCE TO THIS BROCHURE AND TO THE DOCUMENTS REQUIRED BY SECTION 718.503, FLORIDA STATUTES, TO BE FURNISHED BY A DEVELOPER TO A BUYER OR LESSEE.

Sketches, renderings, graphic materials, plans, specifications, terms, conditions and statements contained herein are proposed only and are subject to architectural and other revisions at the sole discretion of the developer, builder, architect, or as may be required by law. Floor plans may not be to scale. Any furniture, appliances or decorator ready items depicted herein are shown for artistic and illustrative purposes only and are not included in the purchase and sale of the residence. Dimensions are based on the definition of the unit as provided in the declaration and the Florida Administrative Code, as such they include only the interior airspace between perimeter walls and exclude interior structural components. However, measurements of the rooms set forth on any floor plan are generally taken from the greatest point of each given room (as if the room was a perfect rectangle), without regard for any cutouts. Accordingly, the area of the actual room will typically be smaller than the product obtained by multiplying the stated length times width. All dimensions are approximate and may vary from actual construction; all floor plans and development plans are subject to change. The renderings illustrate and depict a lifestyle, however, amenities, features and specifications are subject to change without notice. Buyers should check with the sales center for the most current pricing. This is not intended to be an offer to sell, or solicitation to buy condominium units where prohibited by law. All real estate shown herein is subject to the US Federal Fair Housing Act of 1998.



GIRALDA PLACE RESIDENCES

RESIDENCE C9

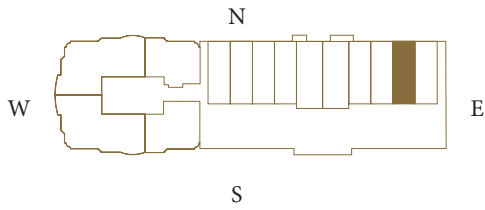
2 Bedrooms | 2.5 Bathrooms

Interior Area:

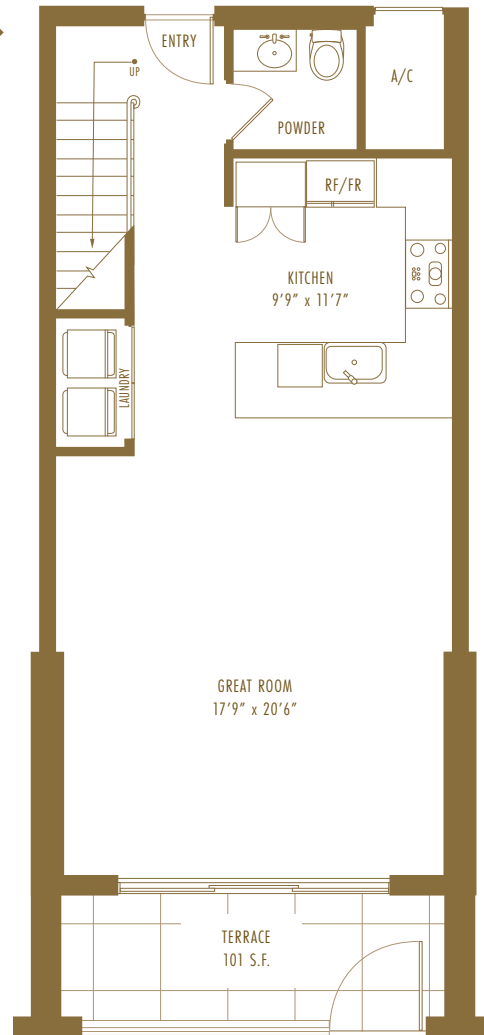
1,422 Sq. Ft. | 132 m²

Terrace/Balcony Area:

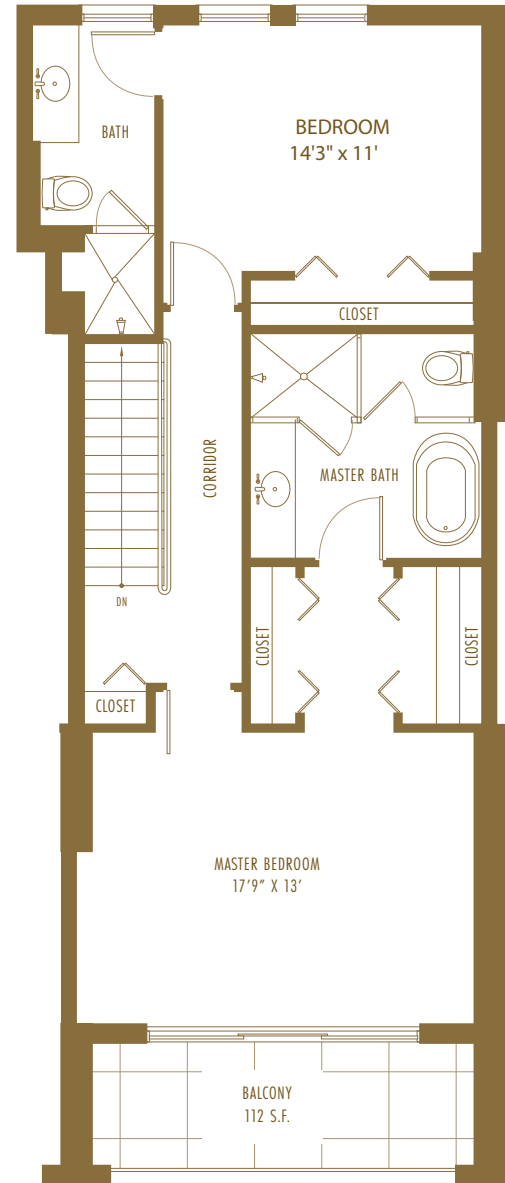
213 Sq.Ft. | 20 m²



1st Floor ▶



2nd Floor ▶



ORAL REPRESENTATIONS CANNOT BE RELIED UPON AS CORRECTLY STATING REPRESENTATIONS OF THE DEVELOPER. FOR CORRECT REPRESENTATIONS, MAKE REFERENCE TO THIS BROCHURE AND TO THE DOCUMENTS REQUIRED BY SECTION 718.503, FLORIDA STATUTES, TO BE FURNISHED BY A DEVELOPER TO A BUYER OR LESSEE.

Sketches, renderings, graphic materials, plans, specifications, terms, conditions and statements contained herein are proposed only and are subject to architectural and other revisions at the sole discretion of the developer, builder, architect, or as may be required by law. Floor plans may not be to scale. Any furniture, appliances or decorator ready items depicted herein are shown for artistic and illustrative purposes only and are not included in the purchase and sale of the residence. Dimensions are based on the definition of the unit as provided in the declaration and the Florida Administrative Code, as such they include only the interior airspace between perimeter walls and exclude interior structural components. However, measurements of the rooms set forth on any floor plan are generally taken from the greatest point of each given room (as if the room was a perfect rectangle), without regard for any cutouts. Accordingly, the area of the actual room will typically be smaller than the product obtained by multiplying the stated length times width. All dimensions are approximate and may vary from actual construction; all floor plans and development plans are subject to change. The renderings illustrate and depict a lifestyle, however, amenities, features and specifications are subject to change without notice. Buyers should check with the sales center for the most current pricing. This is not intended to be an offer to sell, or solicitation to buy condominium units where prohibited by law. All real estate shown herein is subject to the US Federal Fair Housing Act of 1998.



GIRALDA PLACE RESIDENCES

RESIDENCE C10

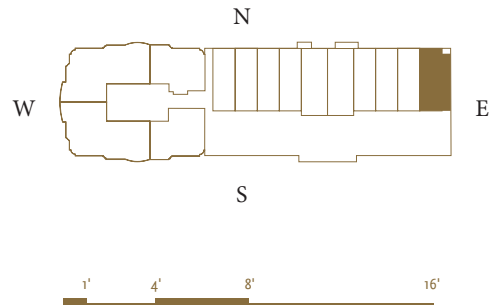
2 Bedrooms | 2.5 Bathrooms

Interior Area:

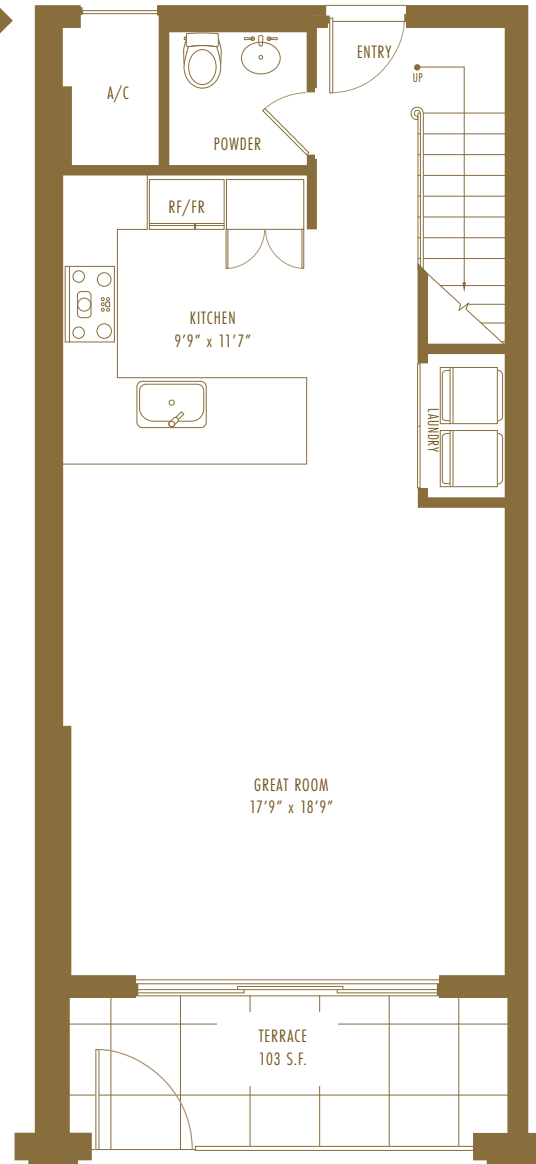
1,663 Sq. Ft. | 154 m²

Terrace/Balcony Area:

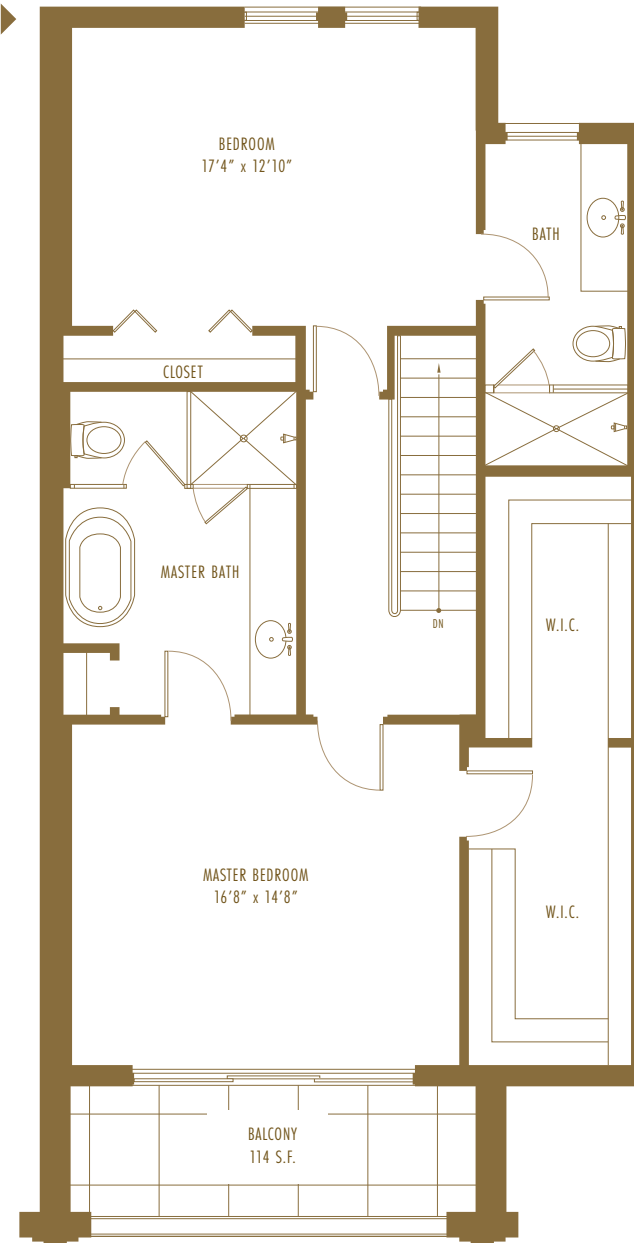
217 Sq.Ft. | 20 m²



1st Floor ▶



2nd Floor ▶



ORAL REPRESENTATIONS CANNOT BE RELIED UPON AS CORRECTLY STATING REPRESENTATIONS OF THE DEVELOPER. FOR CORRECT REPRESENTATIONS, MAKE REFERENCE TO THIS BROCHURE AND TO THE DOCUMENTS REQUIRED BY SECTION 718.503, FLORIDA STATUTES, TO BE FURNISHED BY A DEVELOPER TO A BUYER OR LESSEE.

Sketches, renderings, graphic materials, plans, specifications, terms, conditions and statements contained herein are proposed only and are subject to architectural and other revisions at the sole discretion of the developer, builder, architect, or as may be required by law. Floor plans may not be to scale. Any furniture, appliances or decorator ready items depicted herein are shown for artistic and illustrative purposes only and are not included in the purchase and sale of the residence. Dimensions are based on the definition of the unit as provided in the declaration and the Florida Administrative Code, as such they include only the interior airspace between perimeter walls and exclude interior structural components. However, measurements of the rooms set forth on any floor plan are generally taken from the greatest point of each given room (as if the room was a perfect rectangle), without regard for any cutouts. Accordingly, the area of the actual room will typically be smaller than the product obtained by multiplying the stated length times width. All dimensions are approximate and may vary from actual construction; all floor plans and development plans are subject to change. The renderings illustrate and depict a lifestyle, however, amenities, features and specifications are subject to change without notice. Buyers should check with the sales center for the most current pricing. This is not intended to be an offer to sell, or solicitation to buy condominium units where prohibited by law. All real estate shown herein is subject to the US Federal Fair Housing Act of 1998.