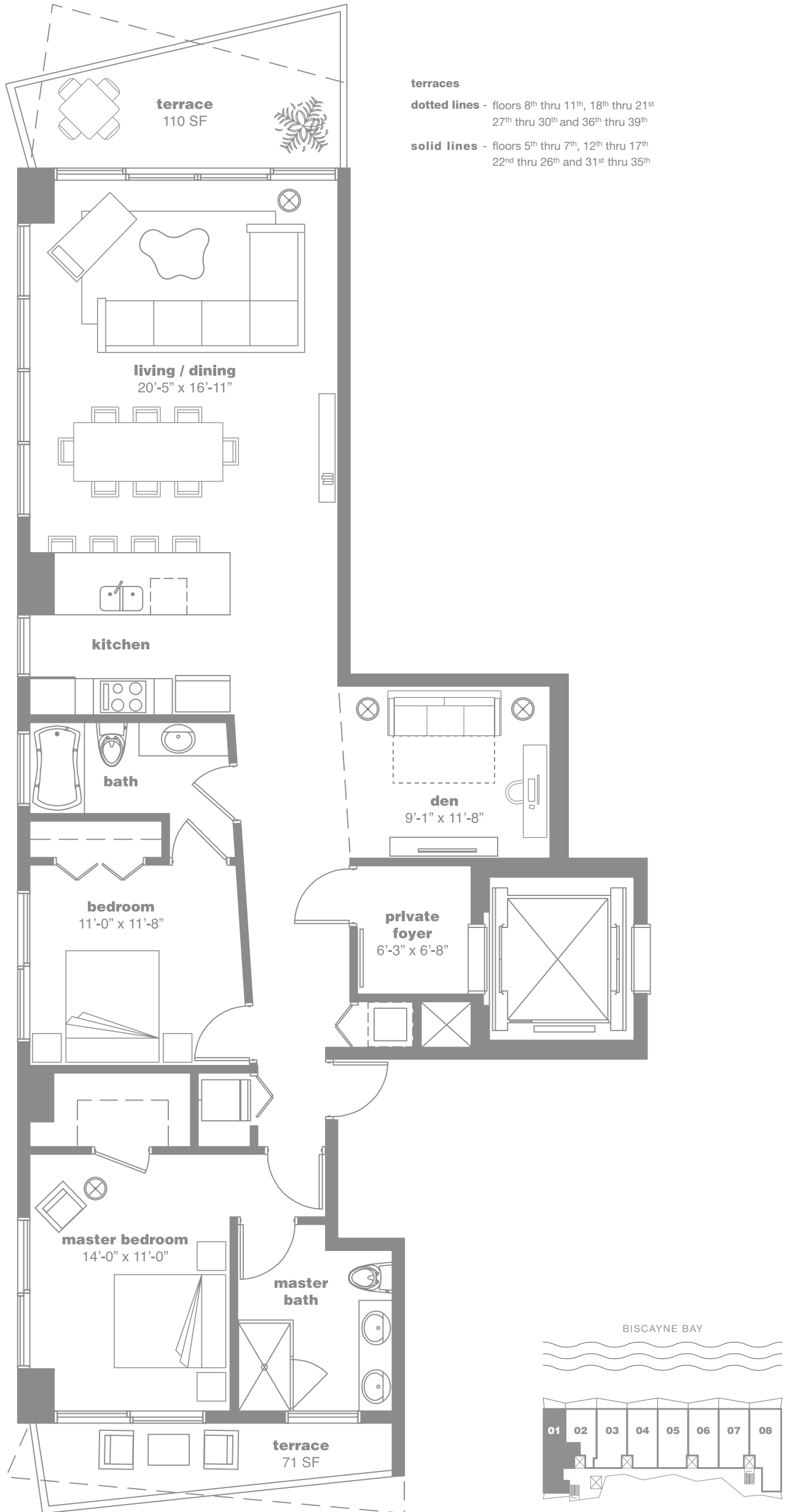


residence
01
levels 5th to 39th



2 Bedrooms + Den / 2 Bathrooms

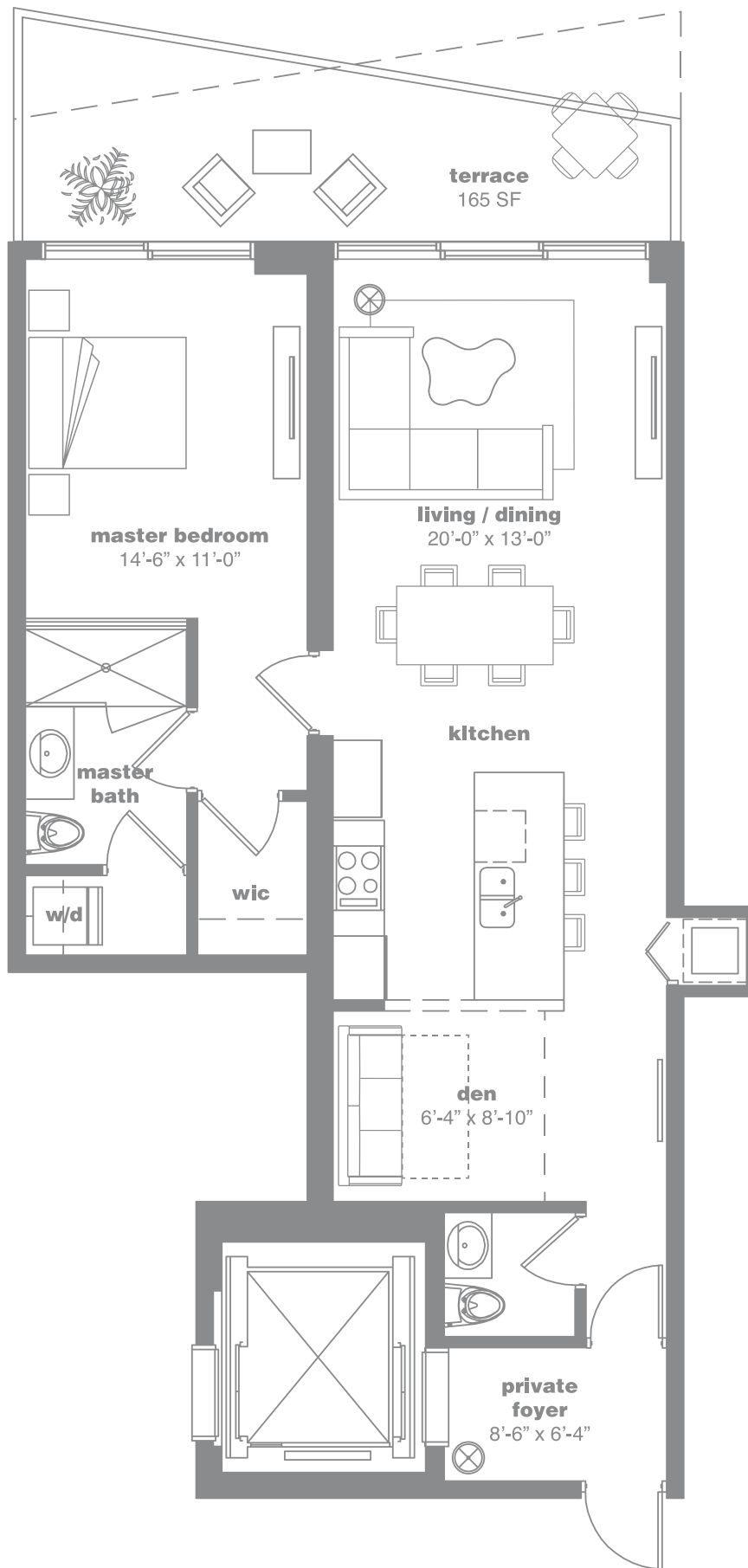
AC: 1,435 Sq. Ft. 134.70 Sq. Mt. // Terrace: 181 Sq. Ft. 16.8 Sq. Mt. // Total Sq. Ft.: 1,616 // Total Sq. Mt.: 150.1

Stated dimensions are measured to the exterior boundaries of the exterior walls and the centerline of interior demising walls and in fact vary from the dimensions that would be determined by using the description and definition of the "Unit" set forth in the Declaration (which generally only includes the interior airspace between the perimeter walls and excludes interior structural components). For your reference, the area of the Unit, determined in accordance with those defined unit boundaries, is + or - 1,311 sq. ft. for units 01. Note that measurements of rooms set forth on this floor plan are generally taken at the greatest points of each given room (as if the room were a perfect rectangle), without regard for any cutouts. Accordingly, the area of the actual room will typically be smaller than the product obtained by multiplying the stated length times width. All dimensions are approximate and may vary with actual construction, and all floor plans and development plans are subject to change.

residence

02

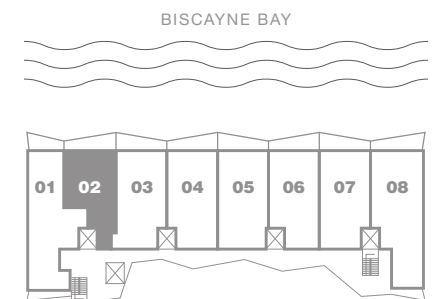
levels 5th to 39th



terraces

dotted lines - floors 8th thru 11th, 18th thru 21st
27th thru 30th and 36th thru 39th

solid lines - floors 5th thru 7th, 12th thru 17th
22nd thru 26th and 31st thru 35th



1 Bedroom + Den / 1 1/2 Bathroom

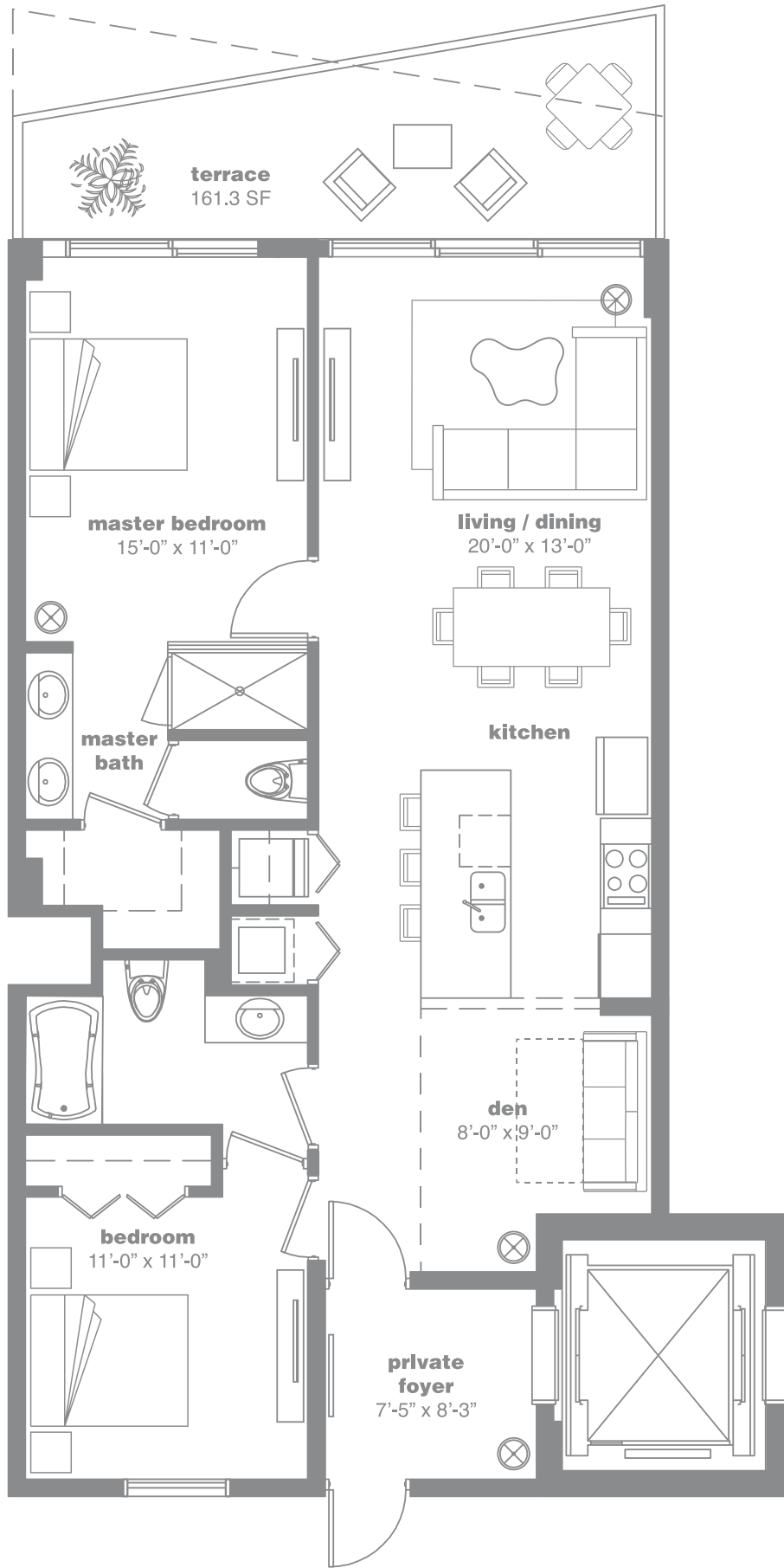
AC: 973 Sq. Ft. 86.2 Sq. Mt. // Terrace: 165 Sq. Ft. 15.3 Sq. Mt. // Total Sq. Ft.: 1,129 // Total Sq. Mt.: 104.8

Stated dimensions are measured to the exterior boundaries of the exterior walls and the centerline of interior demising walls and in fact vary from the dimensions that would be determined by using the description and definition of the "Unit" set forth in the Declaration (which generally only includes the interior airspace between the perimeter walls and excludes interior structural components). For your reference, the area of the Unit, determined in accordance with those defined unit boundaries, is + or - 854 sq. ft. for units 02. Note that measurements of rooms set forth on this floor plan are generally taken at the greatest points of each given room (as if the room were a perfect rectangle), without regard for any cutouts. Accordingly, the area of the actual room will typically be smaller than the product obtained by multiplying the stated length times width. All dimensions are approximate and may vary with actual construction, and all floor plans and development plans are subject to change.

residence

03

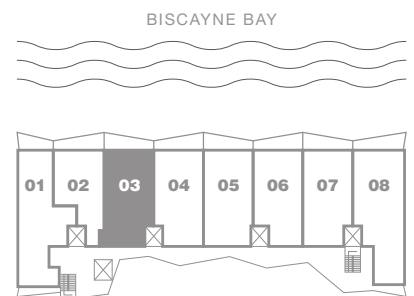
levels 5th to 39th



terraces

dotted lines - floors 8th thru 11th, 18th thru 21st
27th thru 30th and 36th thru 39th

solid lines - floors 5th thru 7th, 12th thru 17th
22nd thru 26th and 31st thru 35th



2 Bedrooms + Den / 2 Bathrooms

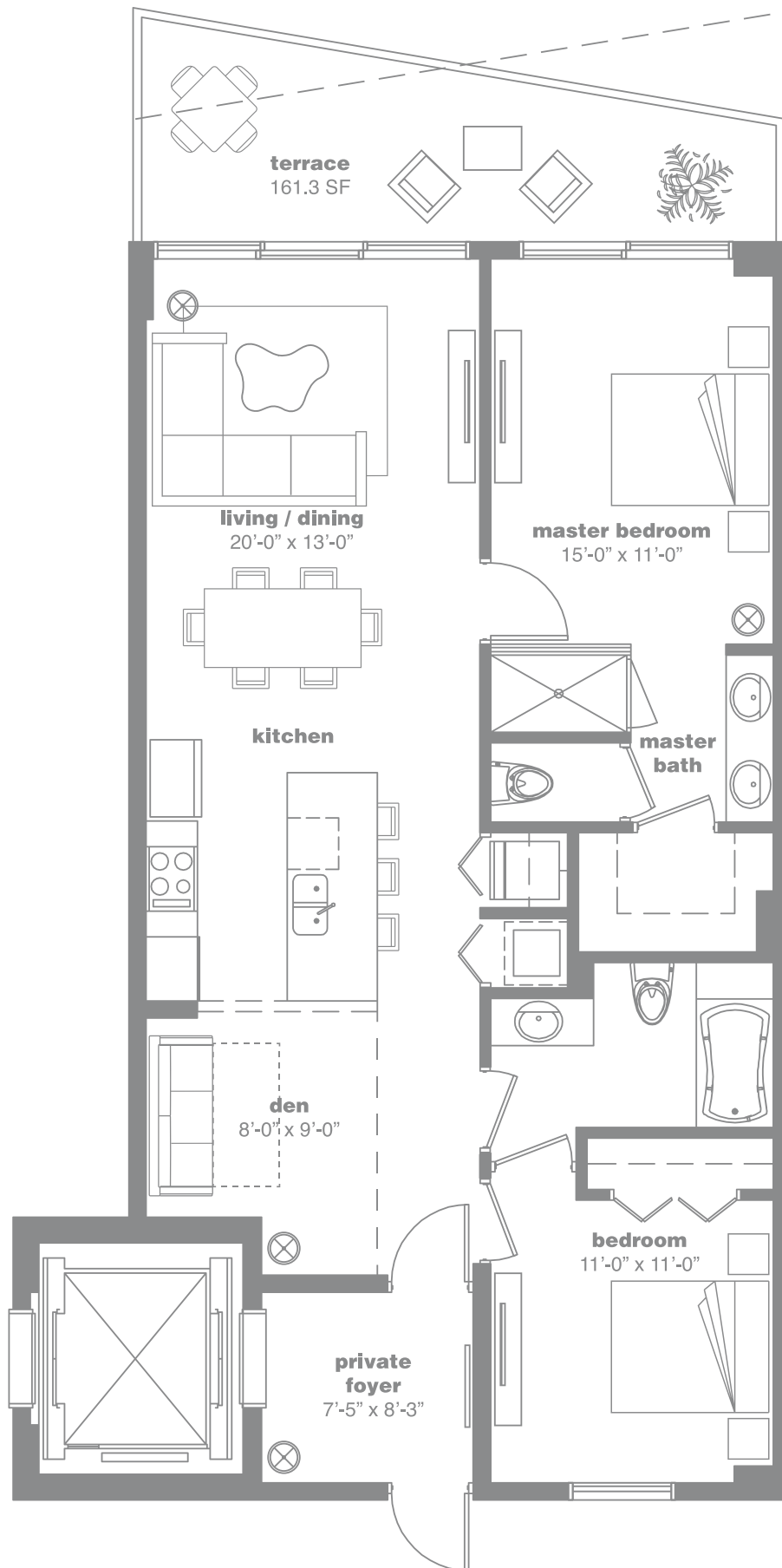
AC: 1,173 Sq. Ft. 108.9 Sq. Mt. // Terrace: 161.3 Sq. Ft. 15 Sq. Mt. // Total Sq. Ft.: 1,335 // Total Sq. Mt.: 124

Stated dimensions are measured to the exterior boundaries of the exterior walls and the centerline of interior demising walls and in fact vary from the dimensions that would be determined by using the description and definition of the "Unit" set forth in the Declaration (which generally only includes the interior airspace between the perimeter walls and excludes interior structural components). For your reference, the area of the Unit, determined in accordance with those defined unit boundaries, is + or - 1,107 sq. ft. for units 03. Note that measurements of rooms set forth on this floor plan are generally taken at the greatest points of each given room (as if the room were a perfect rectangle), without regard for any cutouts. Accordingly, the area of the actual room will typically be smaller than the product obtained by multiplying the stated length times width. All dimensions are approximate and may vary with actual construction, and all floor plans and development plans are subject to change.

residence

04

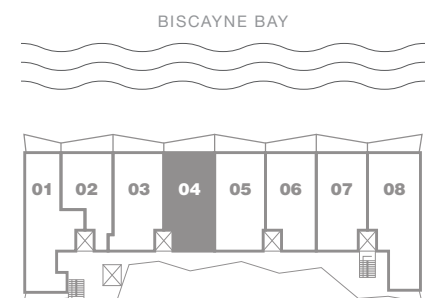
levels 4th to 39th



terraces

dotted lines - floors 8th thru 11th, 18th thru 21st
27th thru 30th and 36th thru 39th

solid lines - floors 4th thru 7th, 12th thru 17th
22nd thru 26th and 31st thru 35th

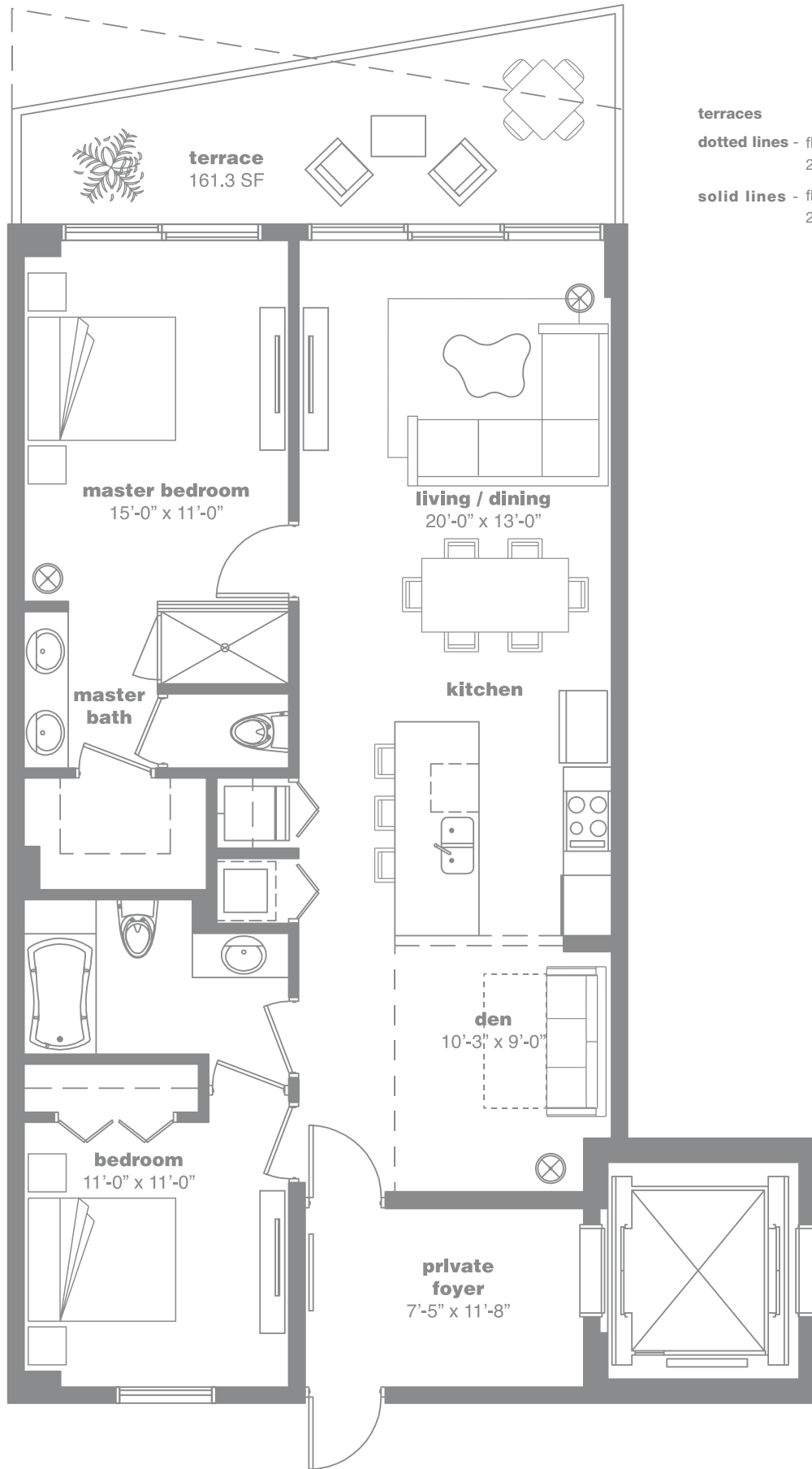


2 Bedrooms + Den / 2 Bathrooms

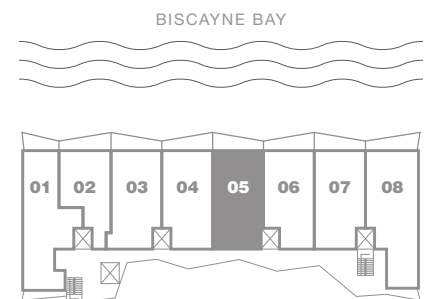
AC: 1,173 Sq. Ft. 108.9 Sq. Mt. // Terrace: 161.3 Sq. Ft. 15 Sq.. Mt. // Total Sq. Ft.: 1,335 // Total Sq. Mt.: 124

Stated dimensions are measured to the exterior boundaries of the exterior walls and the centerline of interior demising walls and in fact vary from the dimensions that would be determined by using the description and definition of the "Unit" set forth in the Declaration (which generally only includes the interior airspace between the perimeter walls and excludes interior structural components). For your reference, the area of the Unit, determined in accordance with those defined unit boundaries, is + or - 1,104 sq. ft. for units 04. Note that measurements of rooms set forth on this floor plan are generally taken at the greatest points of each given room (as if the room were a perfect rectangle), without regard for any cutouts. Accordingly, the area of the actual room will typically be smaller than the product obtained by multiplying the stated length times width. All dimensions are approximate and may vary with actual construction, and all floor plans and development plans are subject to change.

residence
05
levels 4th to 39th



terraces
dotted lines - floors 8th thru 11th, 18th thru 21st
27th thru 30th and 36th thru 39th
solid lines - floors 4th thru 7th, 12th thru 17th
22nd thru 26th and 31st thru 35th



2 Bedrooms + Den / 2 Bathrooms

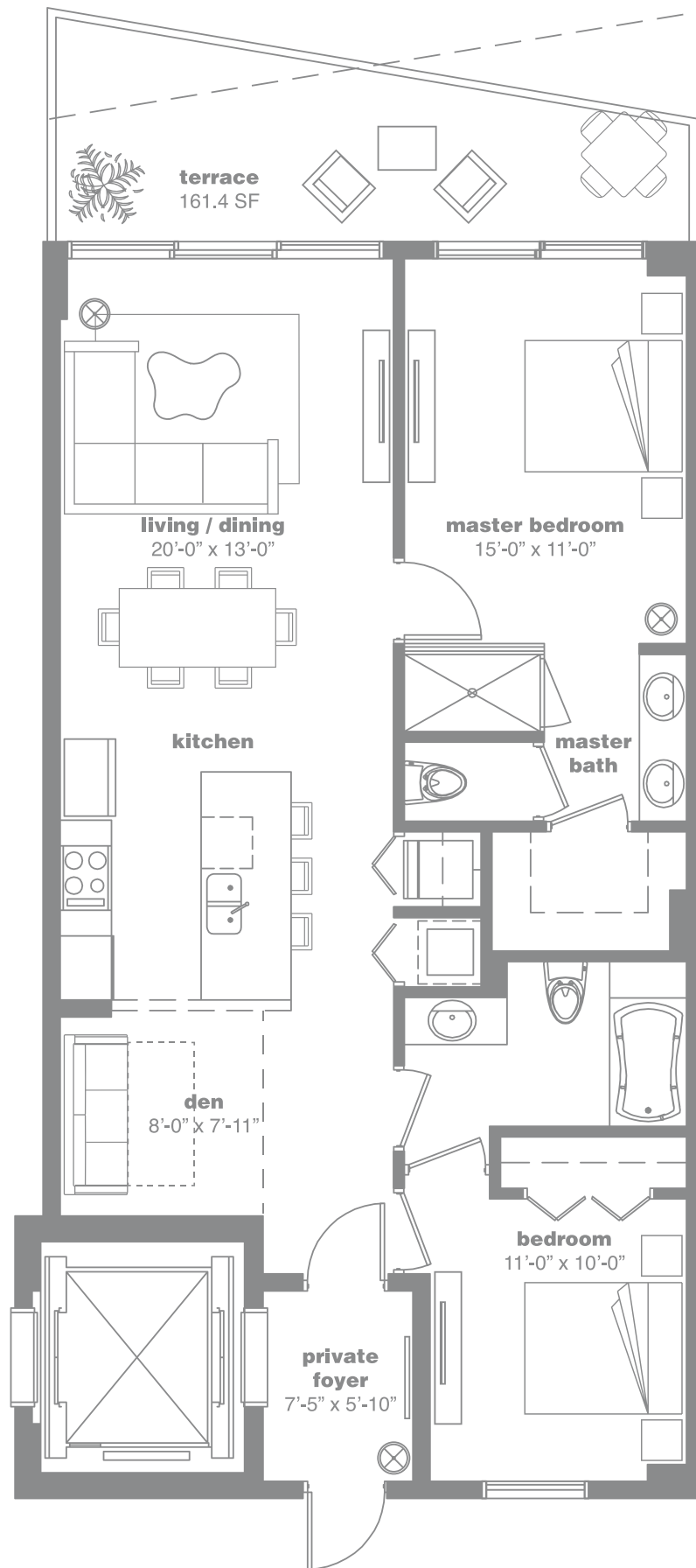
AC: 1,208 Sq. Ft. 112.2 Sq. Mt. // Terrace: 161.3 Sq. Ft. 15 Sq.. Mt. // Total Sq. Ft.: 1,370 // Total Sq. Mt.: 127.2

Stated dimensions are measured to the exterior boundaries of the exterior walls and the centerline of interior demising walls and in fact vary from the dimensions that would be determined by using the description and definition of the "Unit" set forth in the Declaration (which generally only includes the interior airspace between the perimeter walls and excludes interior structural components). For your reference, the area of the Unit, determined in accordance with those defined unit boundaries, is + or -1,143 sq. ft. for units 05. Note that measurements of rooms set forth on this floor plan are generally taken at the greatest points of each given room (as if the room were a perfect rectangle), without regard for any cutouts. Accordingly, the area of the actual room will typically be smaller than the product obtained by multiplying the stated length times width. All dimensions are approximate and may vary with actual construction, and all floor plans and development plans are subject to change.

residence

06

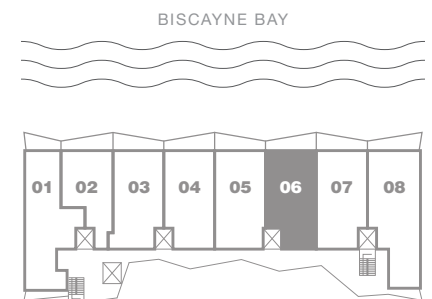
levels 4th to 39th



terraces

dotted lines - floors 8th thru 11th, 18th thru 21st
27th thru 30th and 36th thru 39th

solid lines - floors 4th thru 7th, 12th thru 17th
22nd thru 26th and 31st thru 35th



2 Bedrooms + Den / 2 Bathrooms

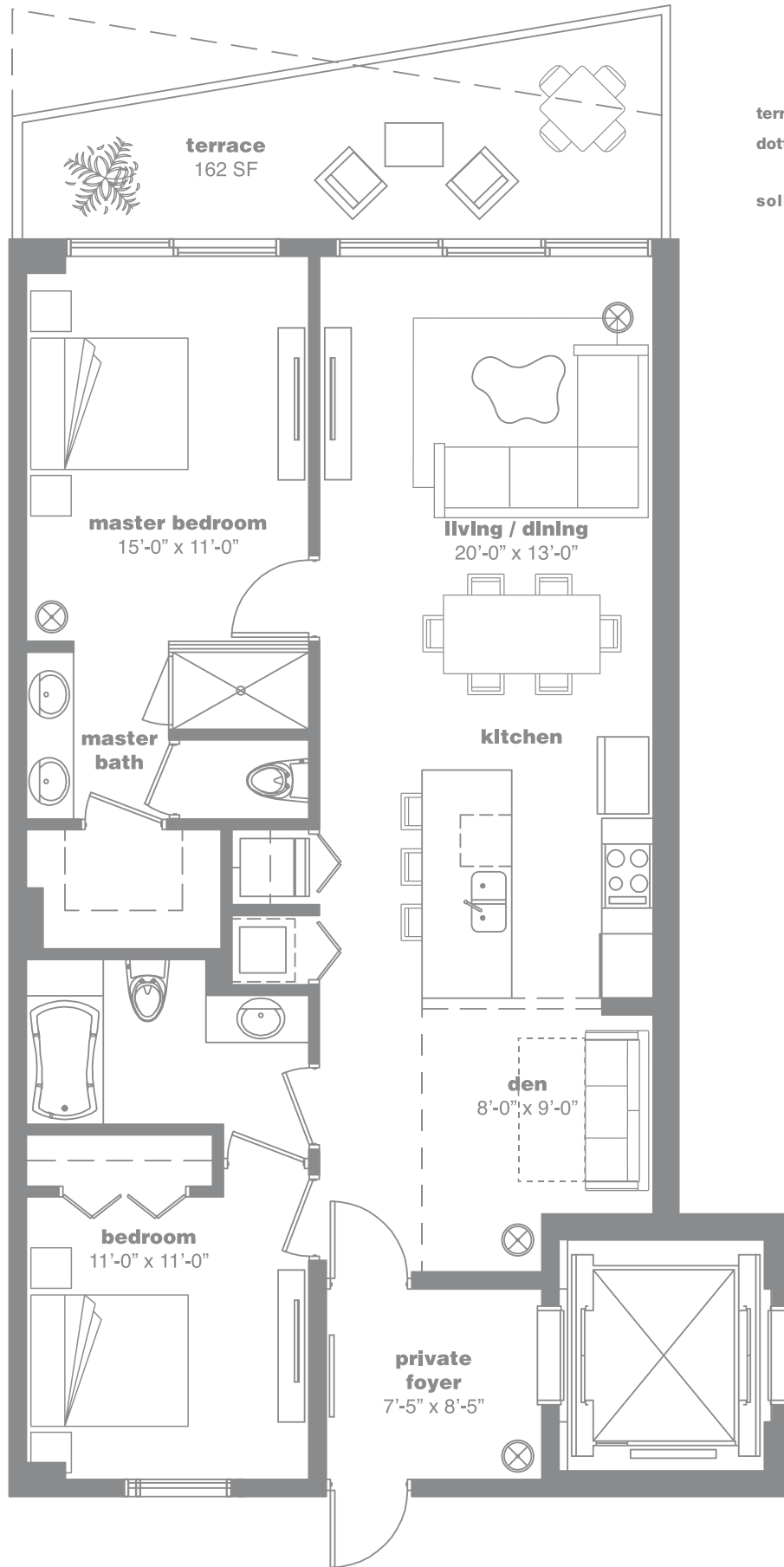
AC: 1,138 Sq. Ft. 105.7 Sq. Mt. // Terrace: 161.4 Sq. Ft. 15 Sq. Mt. // Total Sq. Ft. : 1,300 // Total Sq. Mt.: 120.7

Stated dimensions are measured to the exterior boundaries of the exterior walls and the centerline of interior demising walls and in fact vary from the dimensions that would be determined by using the description and definition of the "Unit" set forth in the Declaration (which generally only includes the interior airspace between the perimeter walls and excludes interior structural components). For your reference, the area of the Unit, determined in accordance with those defined unit boundaries, is + or - 1,073 sq. ft. for units 06. Note that measurements of rooms set forth on this floor plan are generally taken at the greatest points of each given room (as if the room were a perfect rectangle), without regard for any cutouts. Accordingly, the area of the actual room will typically be smaller than the product obtained by multiplying the stated length times width. All dimensions are approximate and may vary with actual construction, and all floor plans and development plans are subject to change.

residence

07

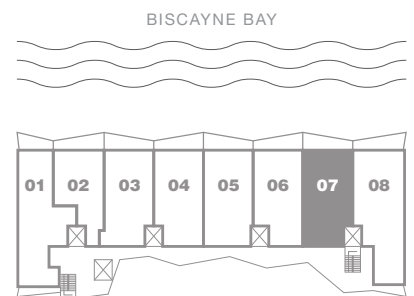
levels 4th to 39th



terraces

dotted lines - floors 8th thru 11th, 18th thru 21st
27th thru 30th and 36th thru 39th

solid lines - floors 4th thru 7th, 12th thru 17th
22nd thru 26th and 31st thru 35th

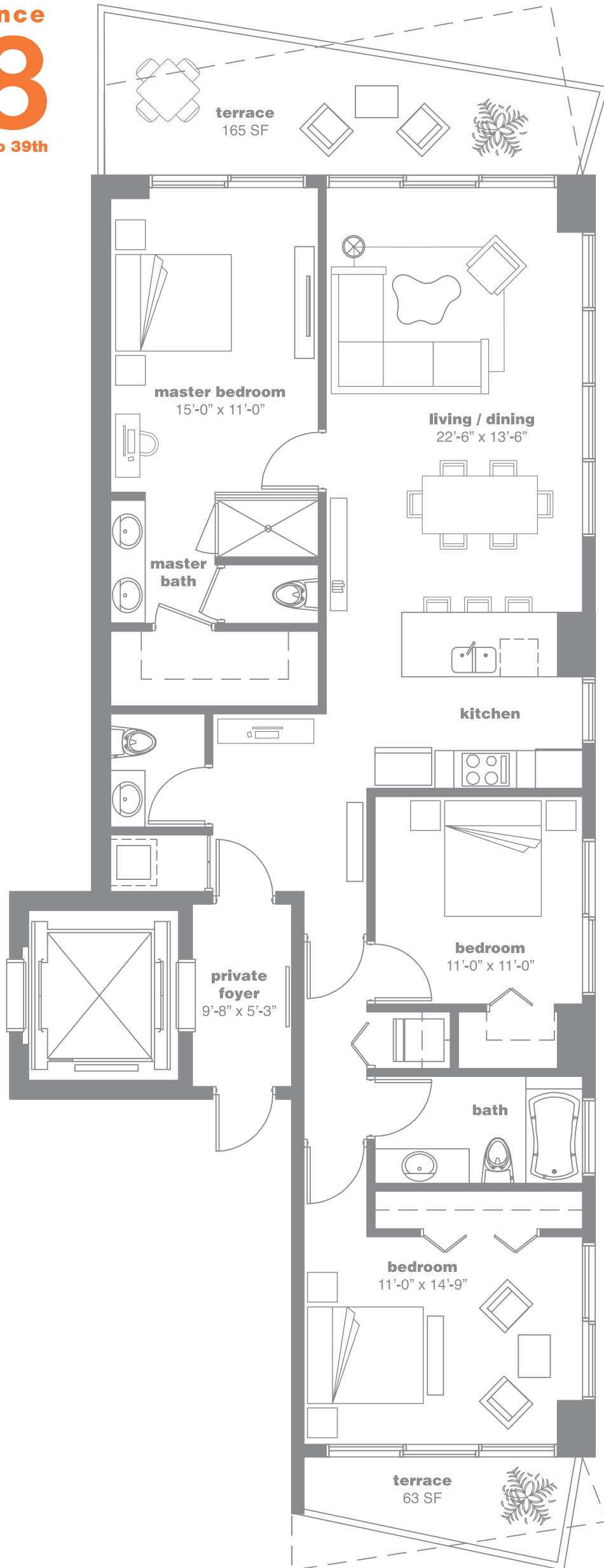


2 Bedrooms + Den / 2 Bathrooms

AC: 1,180 Sq. Ft. 109.7 Sq. Mt. // Terrace: 162 Sq. Ft. 15 Sq. Mt. // Total Sq. Ft.: 1,342 // Total Sq. Mt.: 124.6

Stated dimensions are measured to the exterior boundaries of the exterior walls and the centerline of interior demising walls and in fact vary from the dimensions that would be determined by using the description and definition of the "Unit" set forth in the Declaration (which generally only includes the interior airspace between the perimeter walls and excludes interior structural components). For your reference, the area of the Unit, determined in accordance with those defined unit boundaries, is + or - 1,095 sq. ft. for units 07. Note that measurements of rooms set forth on this floor plan are generally taken at the greatest points of each given room (as if the room were a perfect rectangle), without regard for any cutouts. Accordingly, the area of the actual room will typically be smaller than the product obtained by multiplying the stated length times width. All dimensions are approximate and may vary with actual construction, and all floor plans and development plans are subject to change.

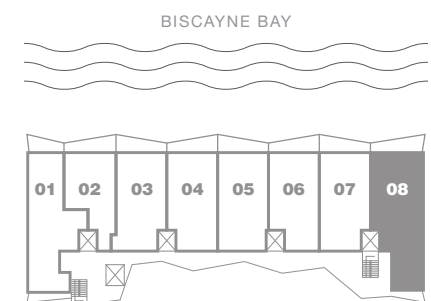
residence
08
levels 3rd to 39th



terraces

dotted lines - floors 8th thru 11th, 18th thru 21st
27th thru 30th and 36th thru 39th

solid lines - floors 3rd thru 7th, 12th thru 17th
22nd thru 26th and 31st thru 35th



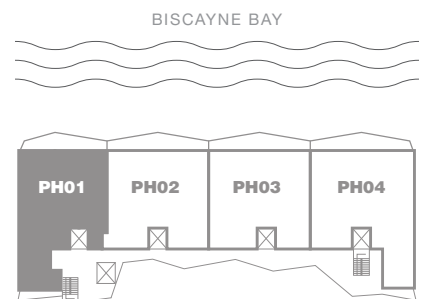
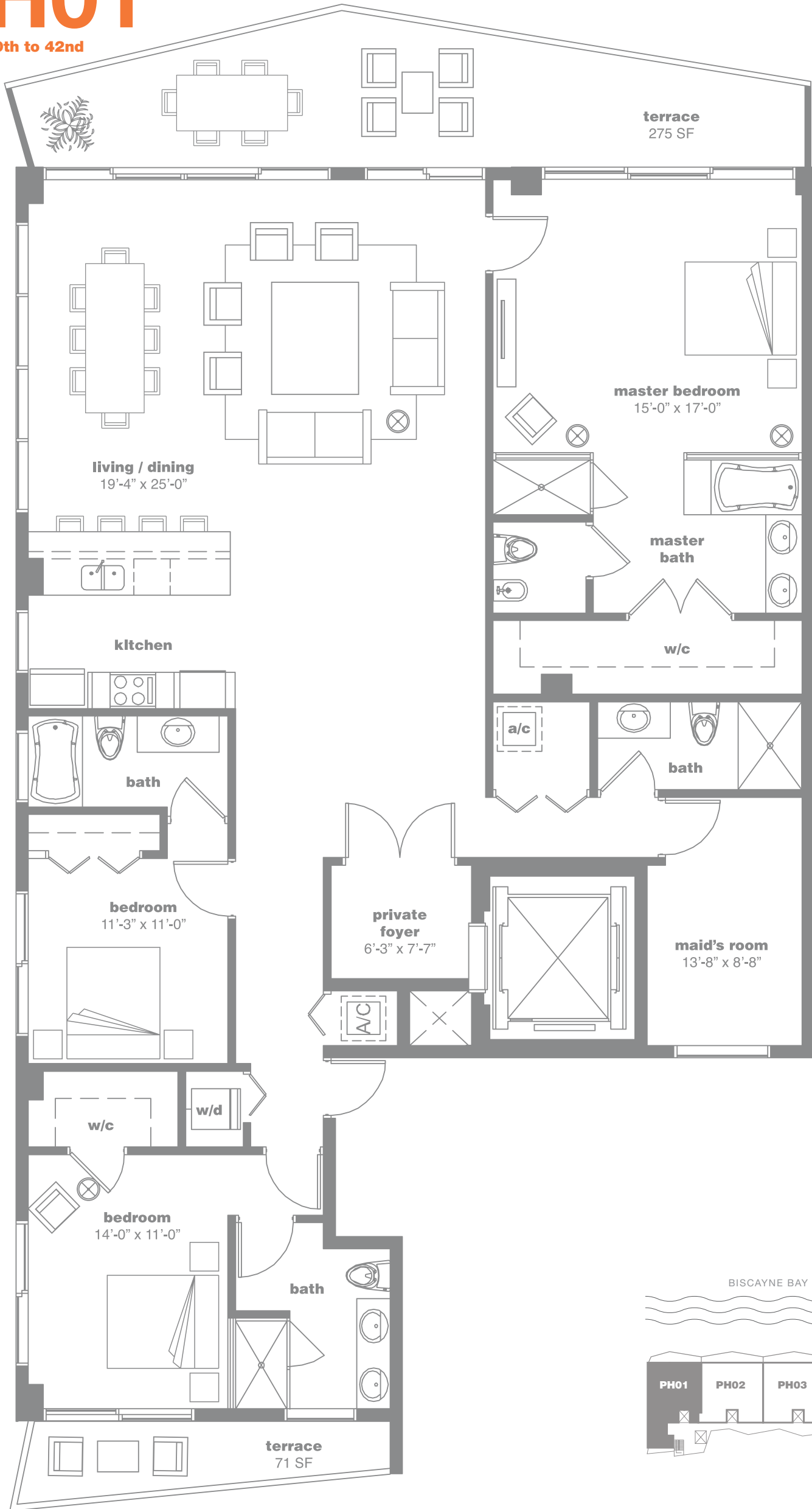
3 Bedrooms, 2 1/2 Bathrooms

AC: 1,530 Sq. Ft. 142.1 Sq. Mt. // Terrace: 228 Sq. Ft. 21.2 Sq. Mt. // Total Sq. Ft.: 1,758 // Total Sq. Mt.: 163.3

Stated dimensions are measured to the exterior boundaries of the exterior walls and the centerline of interior demising walls and in fact vary from the dimensions that would be determined by using the description and definition of the "Unit" set forth in the Declaration (which generally only includes the interior airspace between the perimeter walls and excludes interior structural components). For your reference, the area of the Unit, determined in accordance with those defined unit boundaries, is + or - 1,395 sq. ft. for units 08. Note that measurements of rooms set forth on this floor plan are generally taken at the greatest points of each given room (as if the room were a perfect rectangle), without regard for any cutouts. Accordingly, the area of the actual room will typically be smaller than the product obtained by multiplying the stated length times width. All dimensions are approximate and may vary with actual construction, and all floor plans and development plans are subject to change.

PH01

levels 40th to 42nd



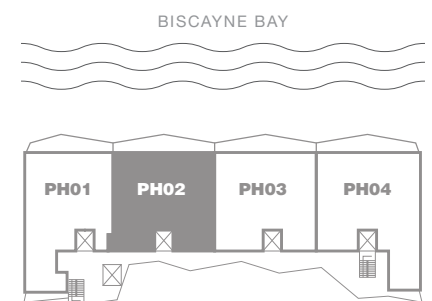
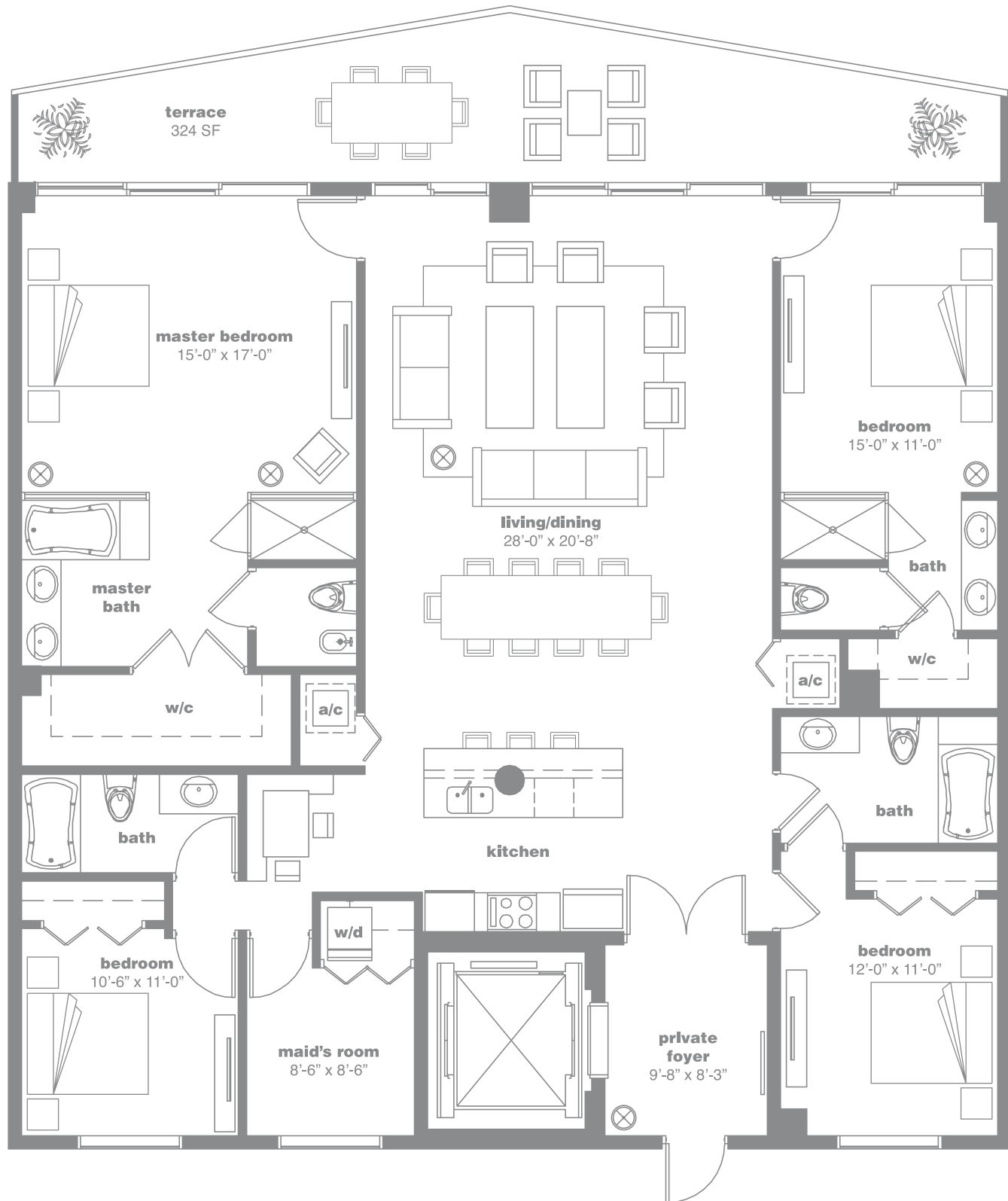
3 Bedrooms, 4 Bathrooms, Maid's Room

AC: 2,416 Sq. Ft. 224.5 Sq. Mt. // Terrace: 346 Sq. Ft. 32.2 Sq. Mt. // Total Sq. Ft.: 2,762 // Total Sq. Mt.: 256.7

Stated dimensions are measured to the exterior boundaries of the exterior walls and the centerline of interior demising walls and in fact vary from the dimensions that would be determined by using the description and definition of the "Unit" set forth in the Declaration (which generally only includes the interior airspace between the perimeter walls and excludes interior structural components). For your reference, the area of the Unit, determined in accordance with those defined unit boundaries, is + or - 2,264 sq. ft. for units 08. Note that measurements of rooms set forth on this floor plan are generally taken at the greatest points of each given room (as if the room were a perfect rectangle), without regard for any cutouts. Accordingly, the area of the actual room will typically be smaller than the product obtained by multiplying the stated length times width. All dimensions are approximate and may vary with actual construction, and all floor plans and development plans are subject to change.

PH02

levels 40th to 42nd



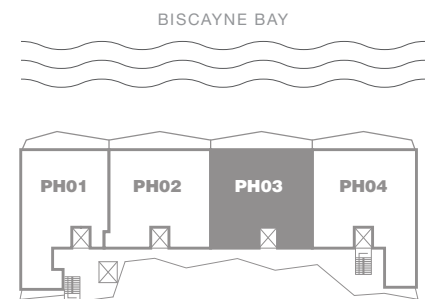
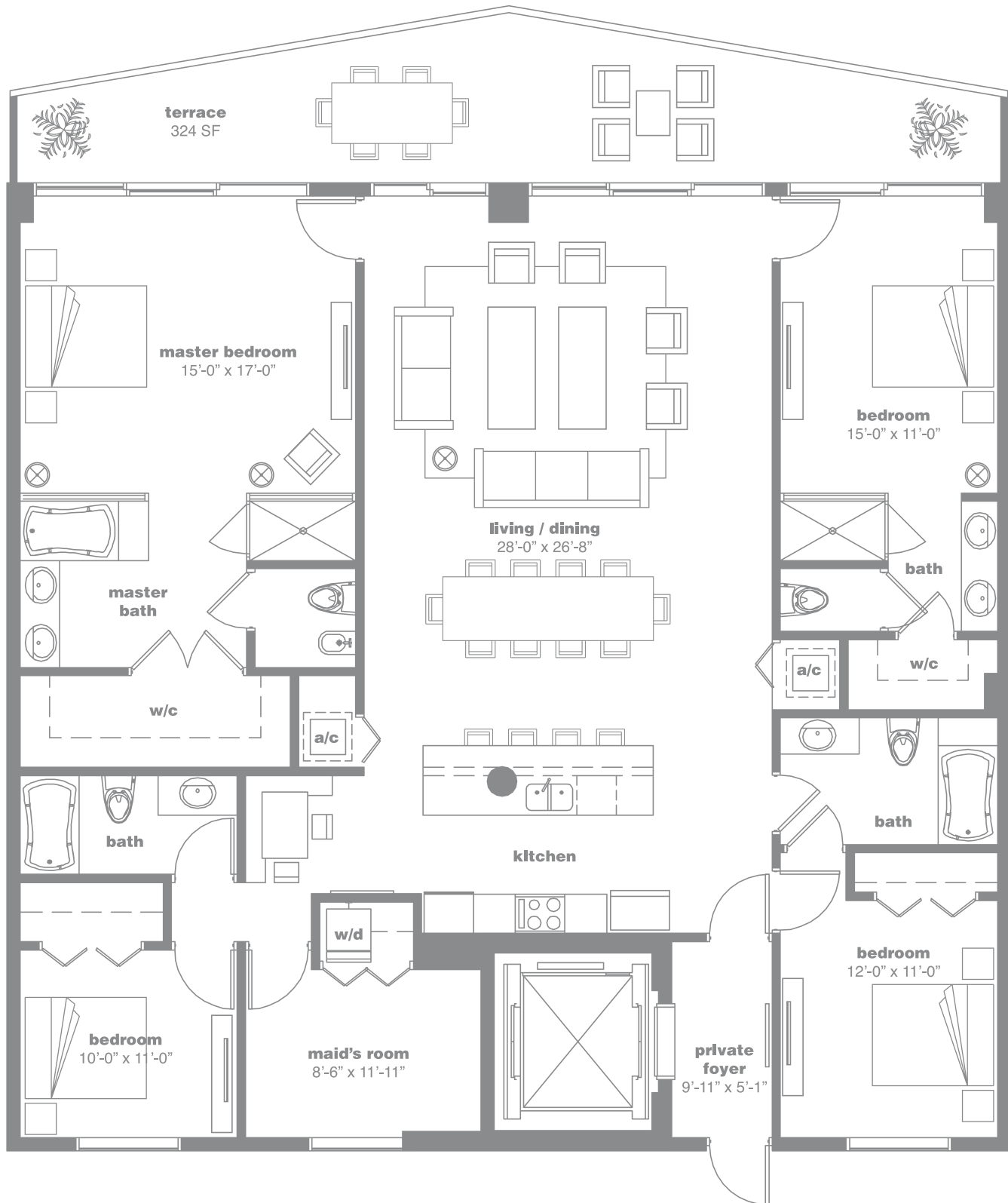
4 Bedrooms, 4 Bathrooms, Maid's Room

AC: 2,346 Sq. Ft. 218 Sq. Mt. // Terrace: 324 Sq. Ft. 30.2 Sq. Mt. // Total Sq. Ft.: 2,670 // Total Sq. Mt.: 248.2

Stated dimensions are measured to the exterior boundaries of the exterior walls and the centerline of interior demising walls and in fact vary from the dimensions that would be determined by using the description and definition of the "Unit" set forth in the Declaration (which generally only includes the interior airspace between the perimeter walls and excludes interior structural components). For your reference, the area of the Unit, determined in accordance with those defined unit boundaries, is + or - 2,248 sq. ft. for units 08. Note that measurements of rooms set forth on this floor plan are generally taken at the greatest points of each given room (as if the room were a perfect rectangle), without regard for any cutouts. Accordingly, the area of the actual room will typically be smaller than the product obtained by multiplying the stated length times width. All dimensions are approximate and may vary with actual construction, and all floor plans and development plans are subject to change.

PH03

levels 40th to 42nd



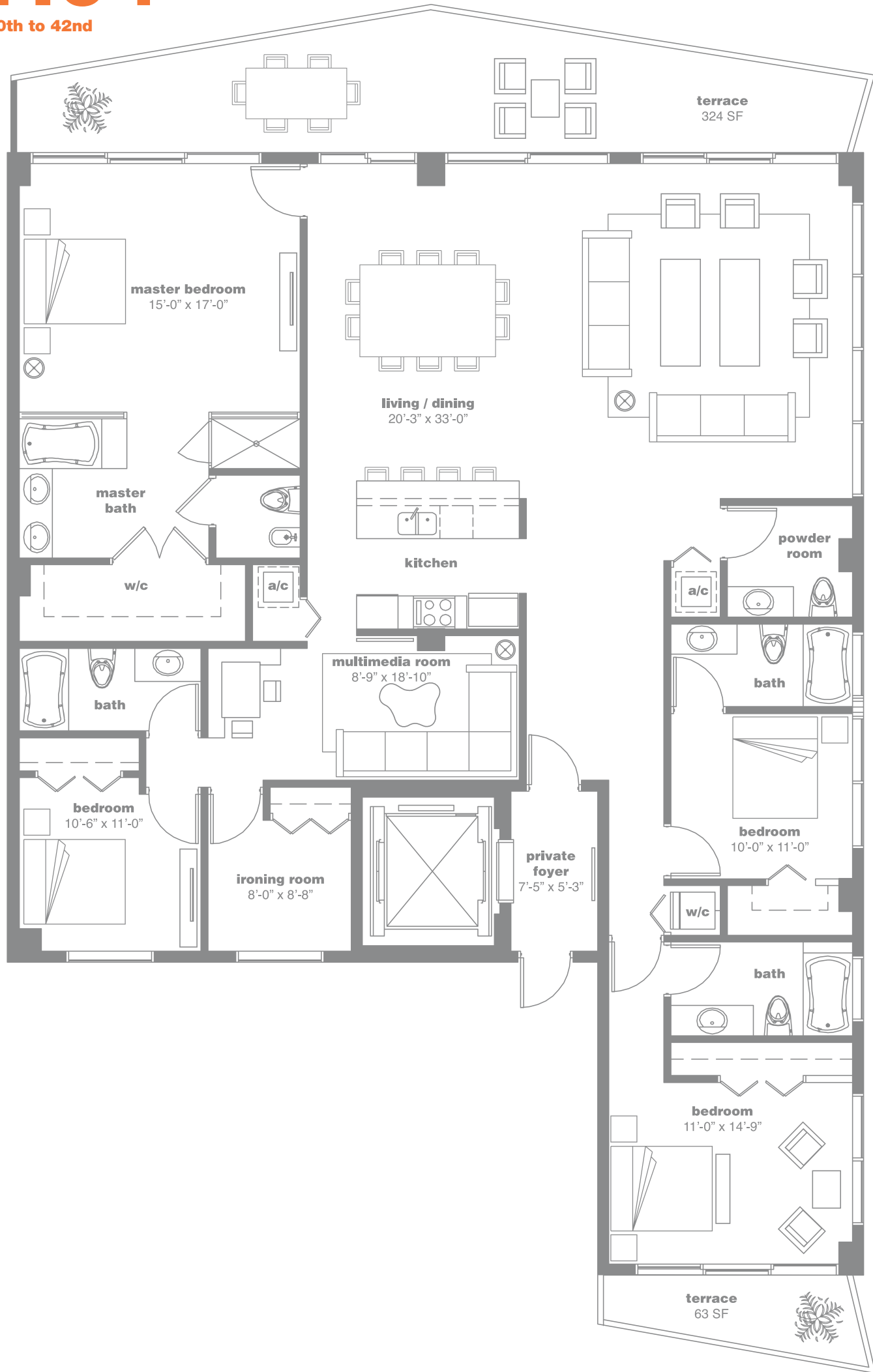
4 Bedrooms, 4 Bathrooms, Maid's Room

AC: 2,346 Sq. Ft. 218 Sq. Mt. // Terrace: 324 Sq. Ft. 30.2 Sq.. Mt. // Total Sq. Ft.: 2,670 // Total Sq. Mt.: 248.2

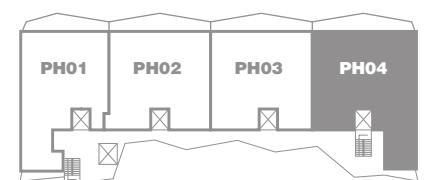
Stated dimensions are measured to the exterior boundaries of the exterior walls and the centerline of interior demising walls and in fact vary from the dimensions that would be determined by using the description and definition of the "Unit" set forth in the Declaration (which generally only includes the interior airspace between the perimeter walls and excludes interior structural components). For your reference, the area of the Unit, determined in accordance with those defined unit boundaries, is + or - 2,250 sq. ft. for units 08. Note that measurements of rooms set forth on this floor plan are generally taken at the greatest points of each given room (as if the room were a perfect rectangle), without regard for any cutouts. Accordingly, the area of the actual room will typically be smaller than the product obtained by multiplying the stated length times width. All dimensions are approximate and may vary with actual construction, and all floor plans and development plans are subject to change.

PH04

levels 40th to 42nd



BISCAYNE BAY



4 Bedrooms, 4 Bathrooms, Media Room

AC: 2,714 Sq. Ft. 252.2 Sq. Mt. // Terrace: 324 Sq. Ft. 30.2 Sq. Mt. // Total Sq. Ft.: 3,038 // Total Sq. Mt.: 282.4

Stated dimensions are measured to the exterior boundaries of the exterior walls and the centerline of interior demising walls and in fact vary from the dimensions that would be determined by using the description and definition of the "Unit" set forth in the Declaration (which generally only includes the interior airspace between the perimeter walls and excludes interior structural components). For your reference, the area of the Unit, determined in accordance with those defined unit boundaries, is + or - 2,569 sq. ft. for units 08. Note that measurements of rooms set forth on this floor plan are generally taken at the greatest points of each given room (as if the room were a perfect rectangle), without regard for any cutouts. Accordingly, the area of the actual room will typically be smaller than the product obtained by multiplying the stated length times width. All dimensions are approximate and may vary with actual construction, and all floor plans and development plans are subject to change.