

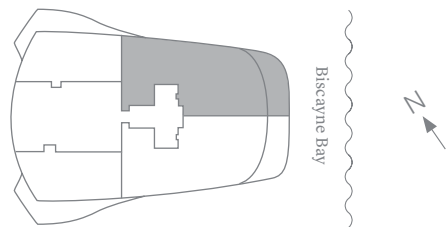
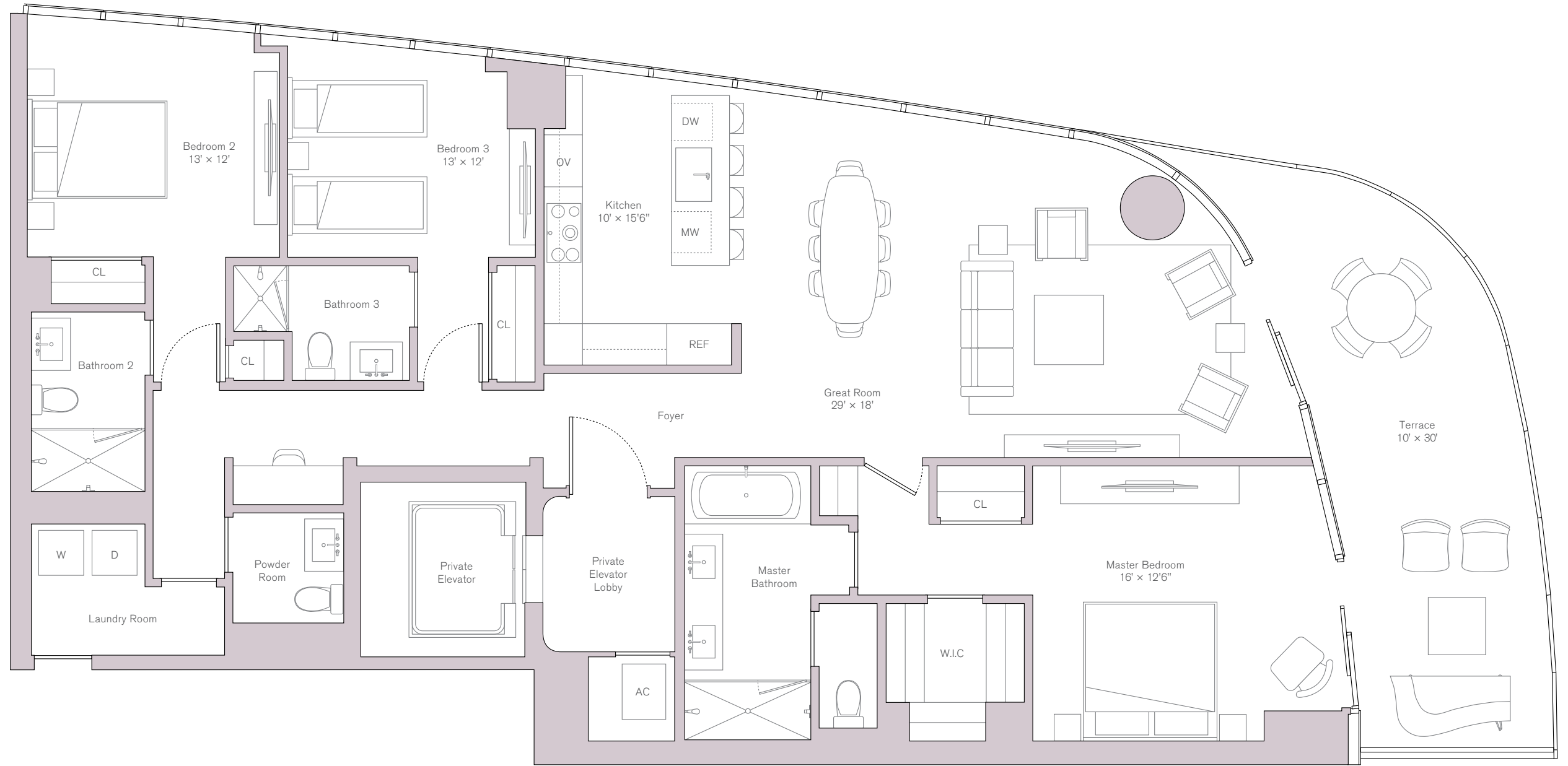
North East Residence  
Levels 05-16 Unit 01

INTERIOR  
2,108 SQ FT / 196 SQ M

EXTERIOR  
312 SQ FT / 29 SQ M

TOTAL  
2,420 SQ FT / 225 SQ M

FEATURES  
3 Bedrooms  
3.5 Bathrooms



ORAL REPRESENTATIONS CANNOT BE RELIED UPON AS CORRECTLY STATING THE REPRESENTATIONS OF THE DEVELOPER. FOR CORRECT REPRESENTATIONS, MAKE REFERENCE TO THIS BROCHURE AND TO THE DOCUMENTS REQUIRED BY SECTION 718.503, FLORIDA STATUTES, TO BE FURNISHED BY A DEVELOPER TO A BUYER OR LESSEE. Ceiling heights are measured from top of slab to top of slab. As a result, actual clearance between the top of the finished floor coverings and the underside of the finished ceiling, drop ceiling or soffits will be less. All ceiling heights are approximate and subject to change. All depictions of furniture, appliances, counters, soffits, floor coverings and other matters of detail, including, without limitation, items of finish and decoration, are conceptual only and are not necessarily included in each Unit. Furnishings are only included if and to the extent provided in your purchase agreement. Stated square footages and dimensions are measured to the exterior boundaries of the exterior walls and the centerline of interior demising walls and in fact vary from the square footage and dimensions that would be determined by using the description and definition of the "Unit" set forth in the Declaration (which generally only includes the interior airspace between the perimeter walls and excludes all interior structural components and other common elements). This method is generally used in sales materials and is provided to allow a prospective buyer to compare the Units with units in other condominium projects that utilize the same method. Measurements of rooms set forth on this floor plan are generally taken at the farthest points of each given room (as if the room were a perfect rectangle), without regard for any cutouts or variations. Accordingly, the area of the actual room will typically be smaller than the product obtained by multiplying the stated length and width. All dimensions are estimates which will vary with actual construction, and all floor plans, specifications and other development plans are subject to change and will not necessarily accurately reflect the final plans and specifications for the development. All depictions of appliances, counters, soffits, floor coverings and other matters of detail, including, without limitation, items of finish and decoration, are conceptual only and are not necessarily included in each Unit.

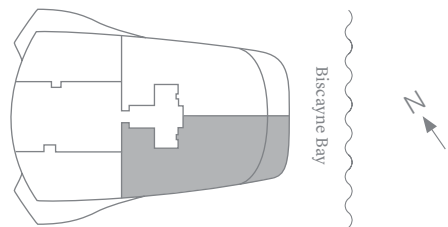
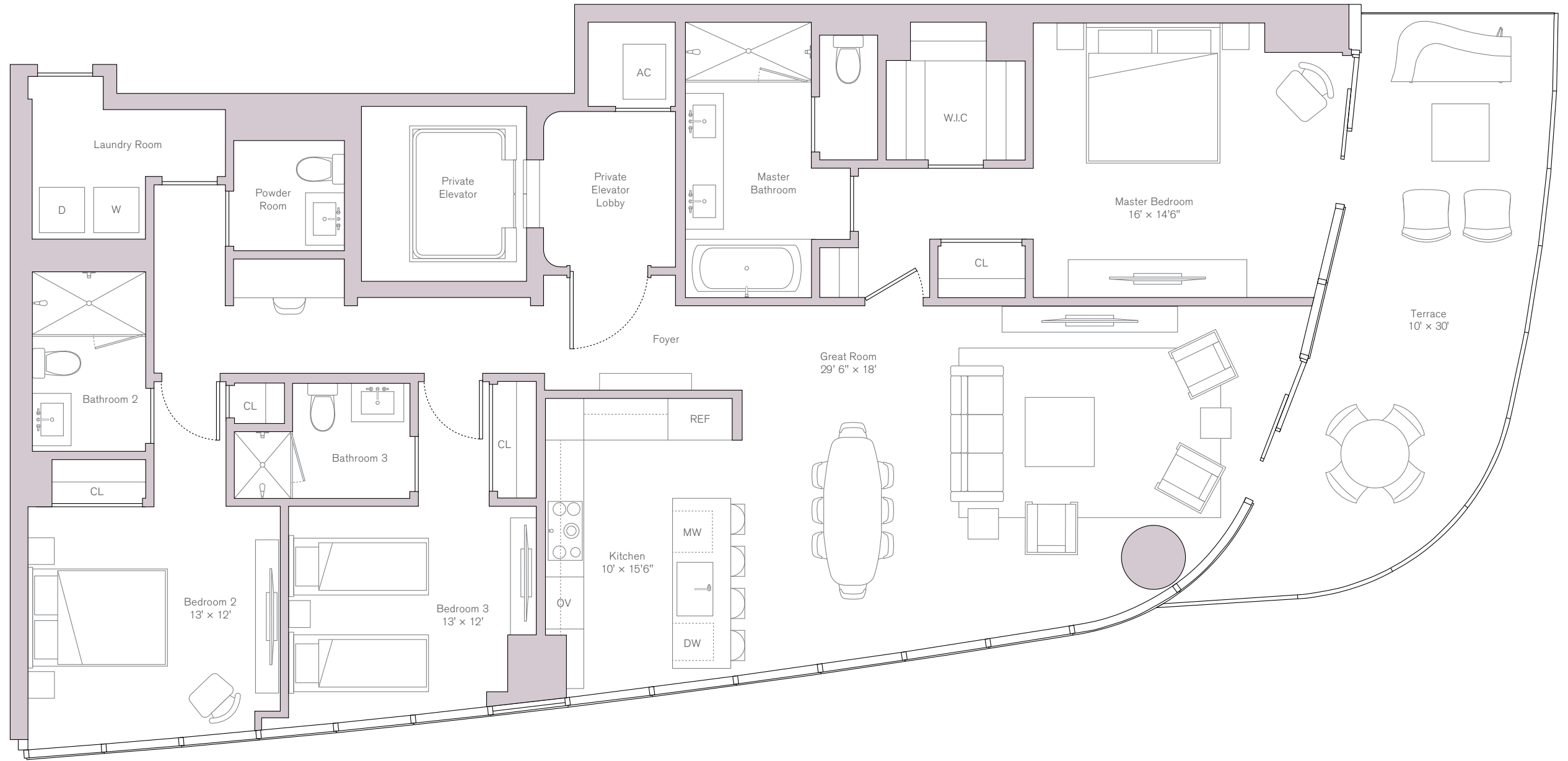
South East Residence  
Levels 05-16 Unit 02

INTERIOR  
2,115 SQ FT / 196 SQ M

EXTERIOR  
312 SQ FT / 29 SQ M

TOTAL  
2,427 SQ FT / 225 SQ M

FEATURES  
3 Bedrooms  
3.5 Bathrooms



**ORAL REPRESENTATIONS CANNOT BE RELIED UPON AS CORRECTLY STATING THE REPRESENTATIONS OF THE DEVELOPER. FOR CORRECT REPRESENTATIONS, MAKE REFERENCE TO THIS BROCHURE AND TO THE DOCUMENTS REQUIRED BY SECTION 718.503, FLORIDA STATUTES, TO BE FURNISHED BY A DEVELOPER TO A BUYER OR LESSEE.** Ceiling heights are measured from top of slab to top of slab. As a result, actual clearance between the top of the finished floor coverings and the underside of the finished ceiling, drop ceiling or soffits will be less. All ceiling heights are approximate and subject to change. All depictions of furniture, appliances, counters, soffits, floor coverings and other matters of detail, including, without limitation, items of finish and decoration, are conceptual only and are not necessarily included in each Unit. Furnishings are only included if and to the extent provided in your purchase agreement. Stated square footages and dimensions are measured to the exterior boundaries of the exterior walls and the centerline of interior demising walls and in fact vary from the square footage and dimensions that would be determined by using the description and definition of the "Unit" set forth in the Declaration (which generally only includes the interior airspace between the perimeter walls and excludes all interior structural components and other common elements). This method is generally used in sales materials and is provided to allow a prospective buyer to compare the Units with units in other condominium projects that utilize the same method. Measurements of rooms set forth on this floor plan are generally taken at the farthest points of each given room (as if the room were a perfect rectangle), without regard for any cutouts or variations. Accordingly, the area of the actual room will typically be smaller than the product obtained by multiplying the stated length and width. All dimensions are estimates which will vary with actual construction, and all floor plans, specifications and other development plans are subject to change and will not necessarily accurately reflect the final plans and specifications for the development. All depictions of appliances, counters, soffits, floor coverings and other matters of detail, including, without limitation, items of finish and decoration, are conceptual only and are not necessarily included in each Unit.

**South West Residence  
Levels 05-16 Unit 03**

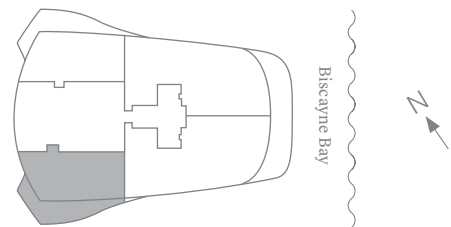
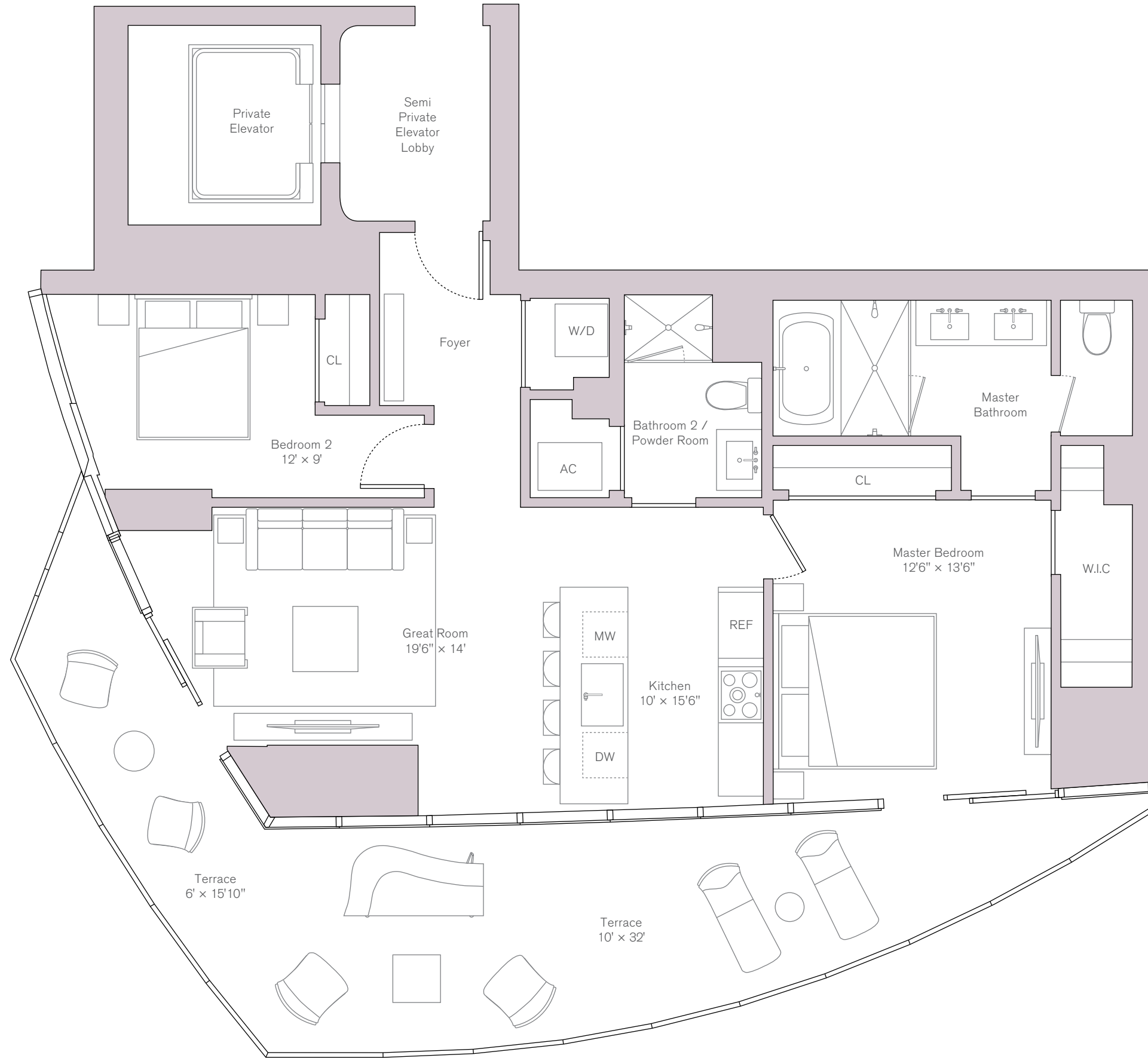
INTERIOR  
**1,179 SQ FT / 110 SQ M**

EXTERIOR  
**404 SQ FT / 38 SQ M**

TOTAL  
**1,583 SQ FT / 147 SQ M**

FEATURES  
**2 Bedrooms  
2 Bathrooms**

Units on Level 15-16  
Interior: 1,215 SQ FT / 112.8 SQ M  
Exterior: 416 SQ FT / 38.6 SQ M



**North West Residence  
Levels 05-16 Unit 04**

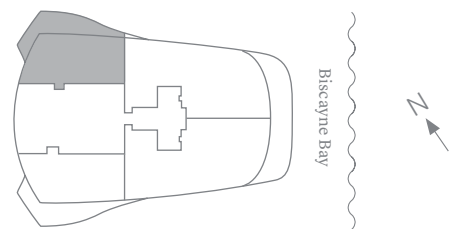
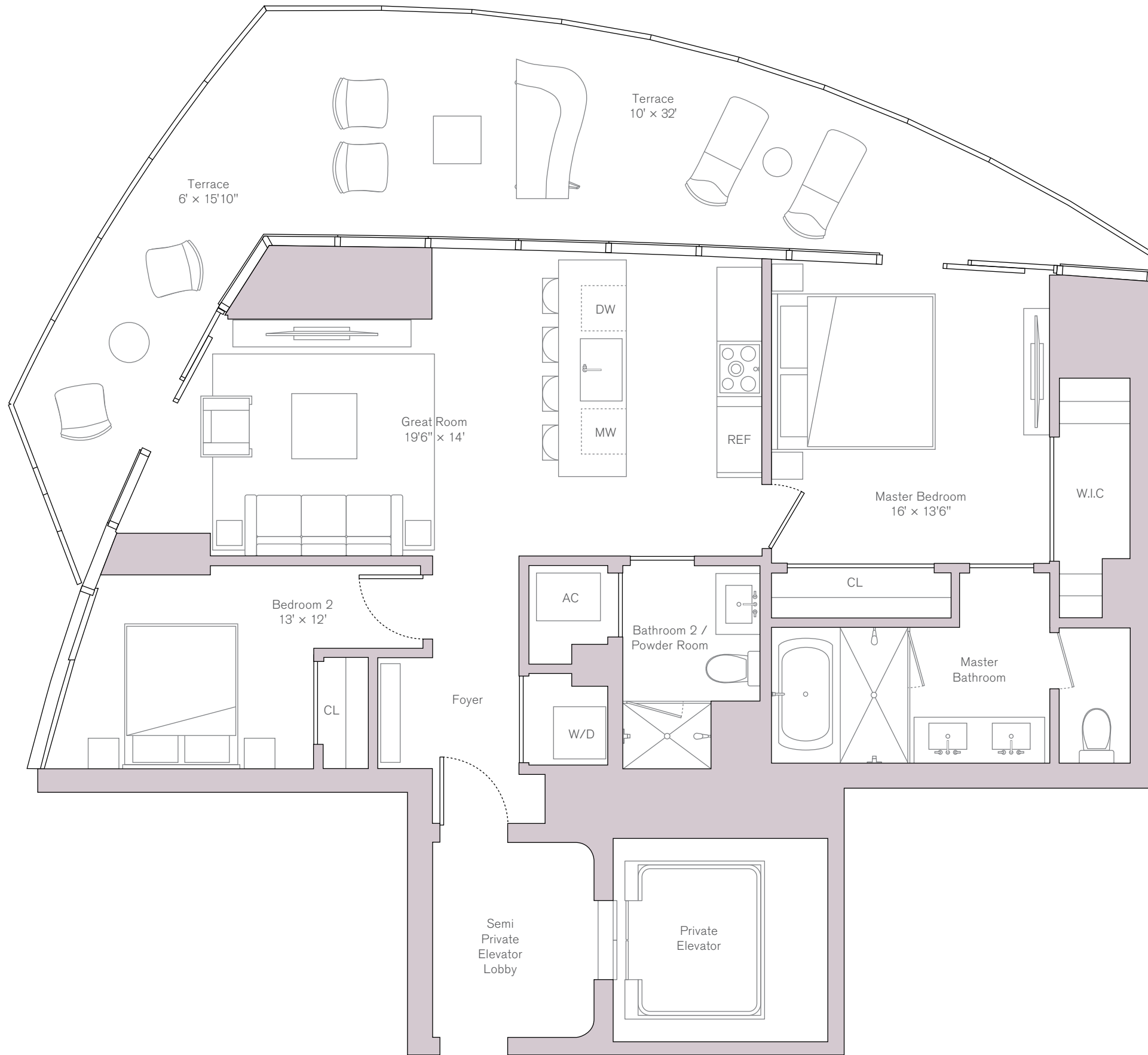
INTERIOR  
**1,098 SQ FT / 102 SQ M**

EXTERIOR  
**404 SQ FT / 38 SQ M**

TOTAL  
**1,502 SQ FT / 140 SQ M**

FEATURES  
**2 Bedrooms  
2 Bathrooms**

Units on Level 15-16  
Interior: 1,133 SQ FT / 105.2 SQ M  
Exterior: 416 SQ FT / 38.6 SQ M



East Residence  
Levels 17, 18 Unit 01

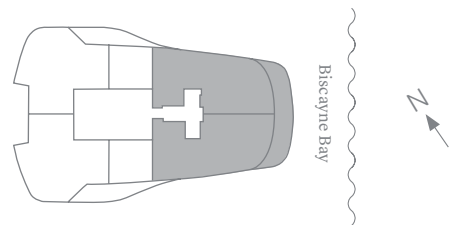
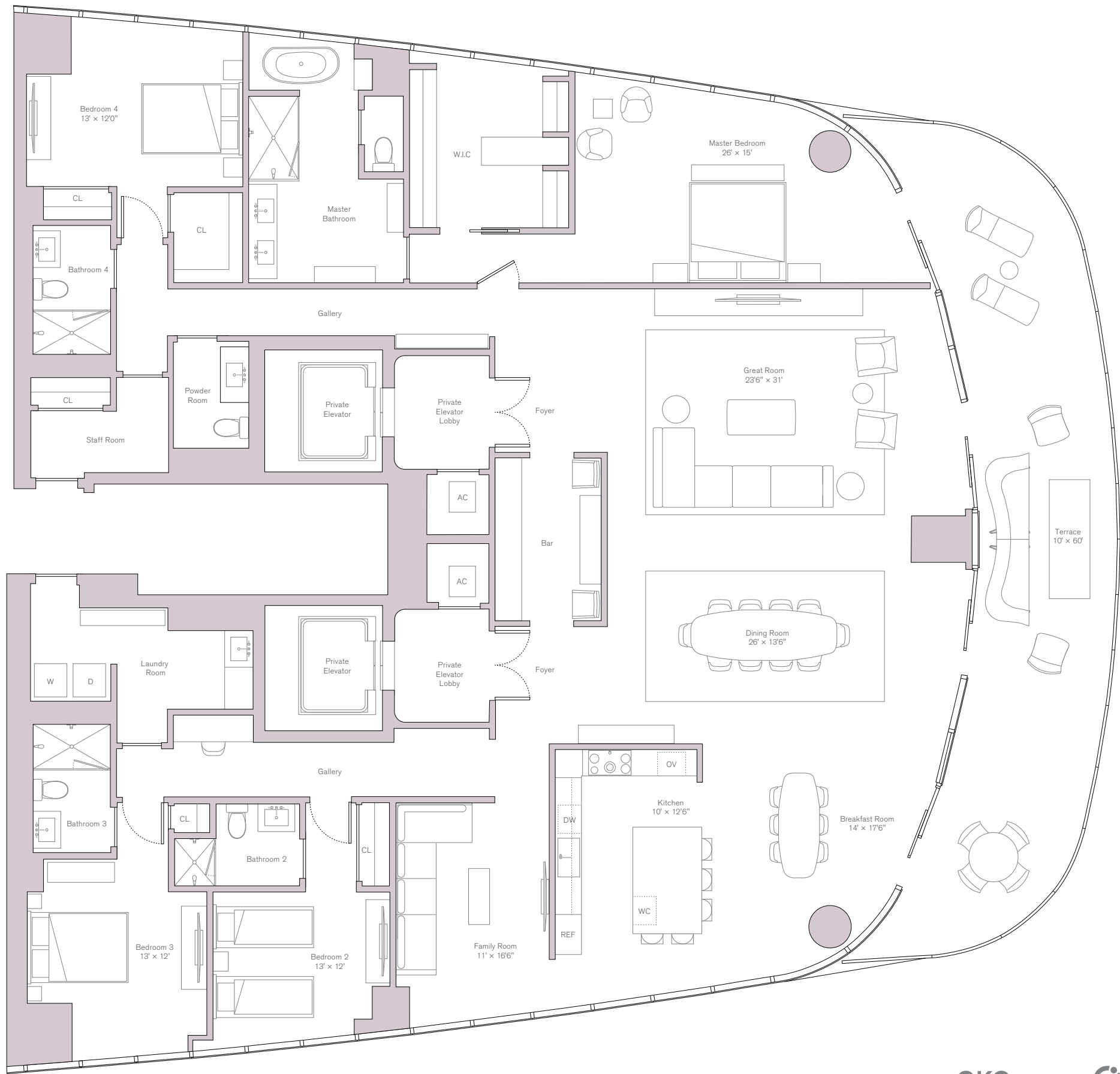
INTERIOR  
4,222 SQ FT / 392 SQ M

EXTERIOR  
624 SQ FT / 58 SQ M

TOTAL  
4,846 SQ FT / 450 SQ M

FEATURES

- 4 Bedrooms
- 4.5 Bathrooms
- Family Room
- Staff Room



North East Residence  
Levels 19-29 Unit 01

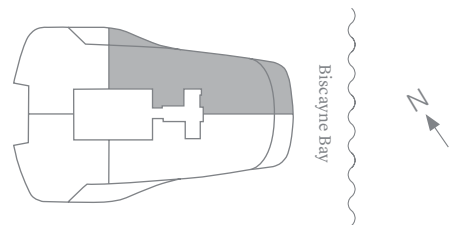
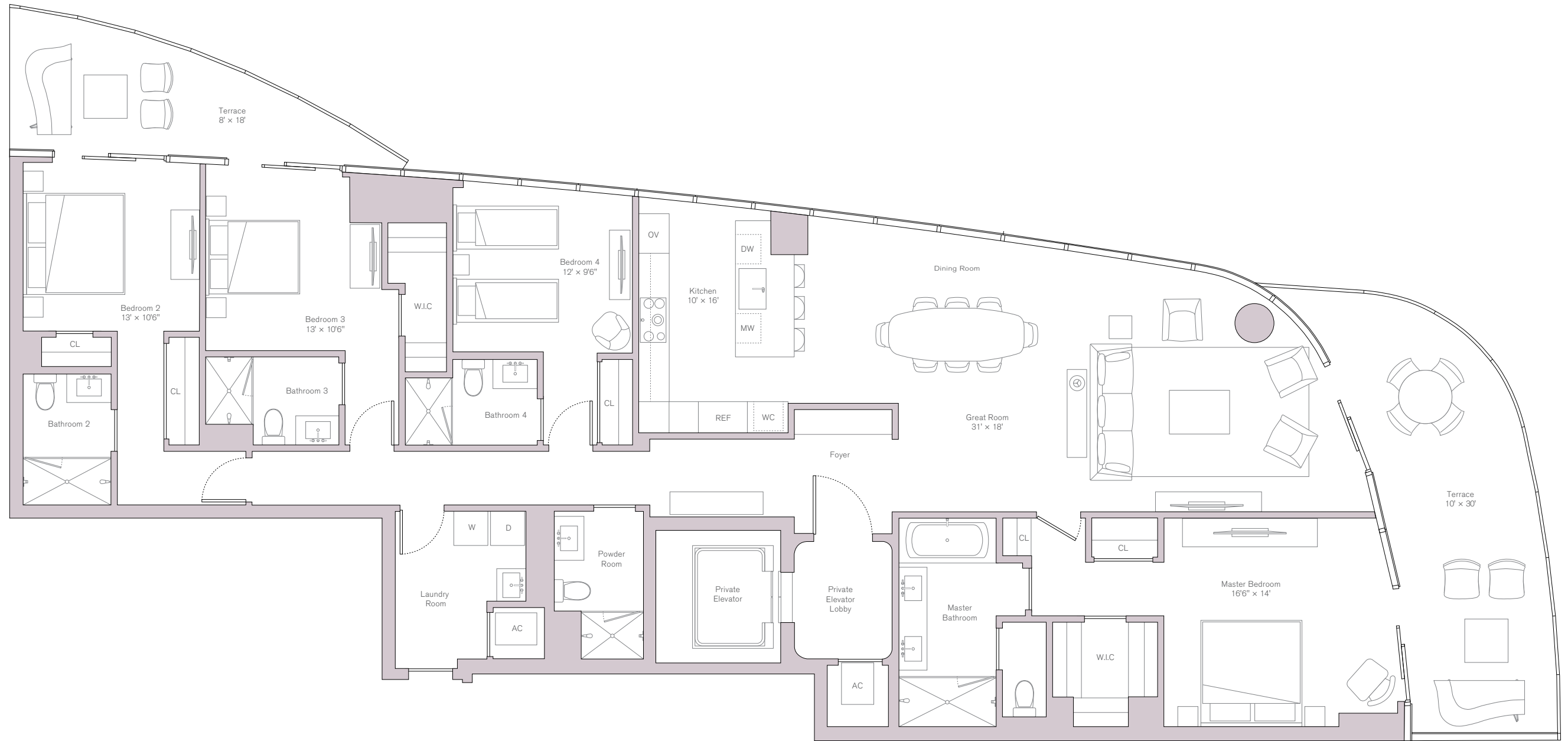
INTERIOR  
2,724 SQ FT / 253 SQ M

EXTERIOR  
456 SQ FT / 42 SQ M

TOTAL  
3,180 SQ FT / 295 SQ M

FEATURES  
4 Bedrooms  
4.5 Bathrooms

Units on Level 30-37  
Interior: 2,759 SQ FT / 256.3 SQ M  
Exterior: 456 SQ FT / 42.3 SQ M



ORAL REPRESENTATIONS CANNOT BE RELIED UPON AS CORRECTLY STATING THE REPRESENTATIONS OF THE DEVELOPER. FOR CORRECT REPRESENTATIONS, MAKE REFERENCE TO THIS BROCHURE AND TO THE DOCUMENTS REQUIRED BY SECTION 718.503, FLORIDA STATUTES, TO BE FURNISHED BY A DEVELOPER TO A BUYER OR LESSEE. Ceiling heights are measured from top of slab to top of slab. As a result, actual clearance between the top of the finished floor coverings and the underside of the finished ceiling, drop ceiling or soffits will be less. All ceiling heights are approximate and subject to change. All depictions of furniture, appliances, counters, soffits, floor coverings and other matters of detail, including, without limitation, items of finish and decoration, are conceptual only and are not necessarily included in each Unit. Furnishings are only included if and to the extent provided in your purchase agreement. Stated square footages and dimensions are measured to the exterior boundaries of the exterior walls and the centerline of interior demising walls and in fact vary from the square footage and dimensions that would be determined by using the description and definition of the "Unit" set forth in the Declaration (which generally only includes the interior airspace between the perimeter walls and excludes all interior structural components and other common elements). This method is generally used in sales materials and is provided to allow a prospective buyer to compare the Units with units in other condominium projects that utilize the same method. Measurements of rooms set forth on this floor plan are generally taken at the farthest points of each given room (as if the room were a perfect rectangle), without regard for any cutouts or variations. Accordingly, the area of the actual room will typically be smaller than the product obtained by multiplying the stated length and width. All dimensions are estimates which will vary with actual construction, and all floor plans, specifications and other development plans are subject to change and will not necessarily accurately reflect the final plans and specifications for the development. All depictions of appliances, counters, soffits, floor coverings and other matters of detail, including, without limitation, items of finish and decoration, are conceptual only and are not necessarily included in each Unit.

South East Residence  
Levels 19-29 Unit 02

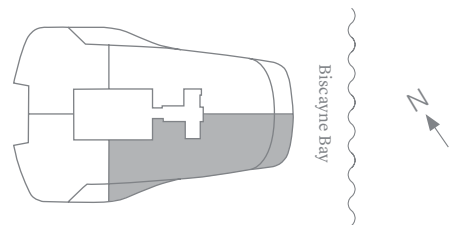
INTERIOR  
2,731 SQ FT / 254 SQ M

EXTERIOR  
456 SQ FT / 42 SQ M

TOTAL  
3,181 SQ FT / 296 SQ M

FEATURES  
4 Bedrooms  
4.5 Bathrooms

Units on Level 30-37  
Interior: 2,766 SQ FT / 256.9 SQ M  
Exterior: 456 SQ FT / 42.3 SQ M



**South West Residence  
Levels 19-29 Unit 03**

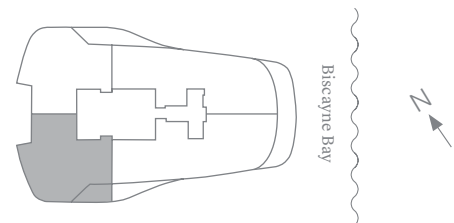
INTERIOR  
**1,995 SQ FT / 185 SQ M**

EXTERIOR  
**356 SQ FT / 33 SQ M**

TOTAL  
**2,351 SQ FT / 218 SQ M**

FEATURES  
**3 Bedrooms  
3.5 Bathrooms**

Units on Level 30-37  
Interior: 2,019 SQ FT / 187.5 SQ M  
Exterior: 356 SQ FT / 33 SQ M



**ORAL REPRESENTATIONS CANNOT BE RELIED UPON AS CORRECTLY STATING THE REPRESENTATIONS OF THE DEVELOPER. FOR CORRECT REPRESENTATIONS, MAKE REFERENCE TO THIS BROCHURE AND TO THE DOCUMENTS REQUIRED BY SECTION 718.503, FLORIDA STATUTES, TO BE FURNISHED BY A DEVELOPER TO A BUYER OR LESSEE.** Ceiling heights are measured from top of slab to top of slab. As a result, actual clearance between the top of the finished floor coverings and the underside of the finished ceiling, drop ceiling or soffits will be less. All ceiling heights are approximate and subject to change. All depictions of furniture, appliances, counters, soffits, floor coverings and other matters of detail, including, without limitation, items of finish and decoration, are conceptual only and are not necessarily included in each Unit. Furnishings are only included if and to the extent provided in your purchase agreement. Stated square footages and dimensions are measured to the exterior boundaries of the exterior walls and the centerline of interior demising walls and in fact vary from the square footage and dimensions that would be determined by using the description and definition of the "Unit" set forth in the Declaration (which generally only includes the interior airspace between the perimeter walls and excludes all interior structural components and other common elements). This method is generally used in sales materials and is provided to allow a prospective buyer to compare the Units with units in other condominium projects that utilize the same method. Measurements of rooms set forth on this floor plan are generally taken at the farthest points of each given room (as if the room were a perfect rectangle), without regard for any cutouts or variations. Accordingly, the area of the actual room will typically be smaller than the product obtained by multiplying the stated length and width. All dimensions are estimates which will vary with actual construction, and all floor plans, specifications and other development plans are subject to change and will not necessarily accurately reflect the final plans and specifications for the development. All depictions of appliances, counters, soffits, floor coverings and other matters of detail, including, without limitation, items of finish and decoration, are conceptual only and are not necessarily included in each Unit.



North West Residence  
Levels 19-29 Unit 04

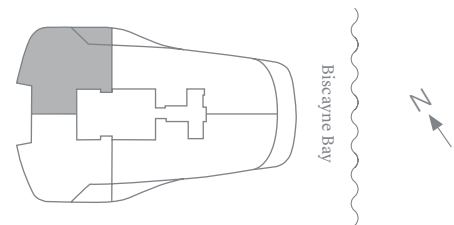
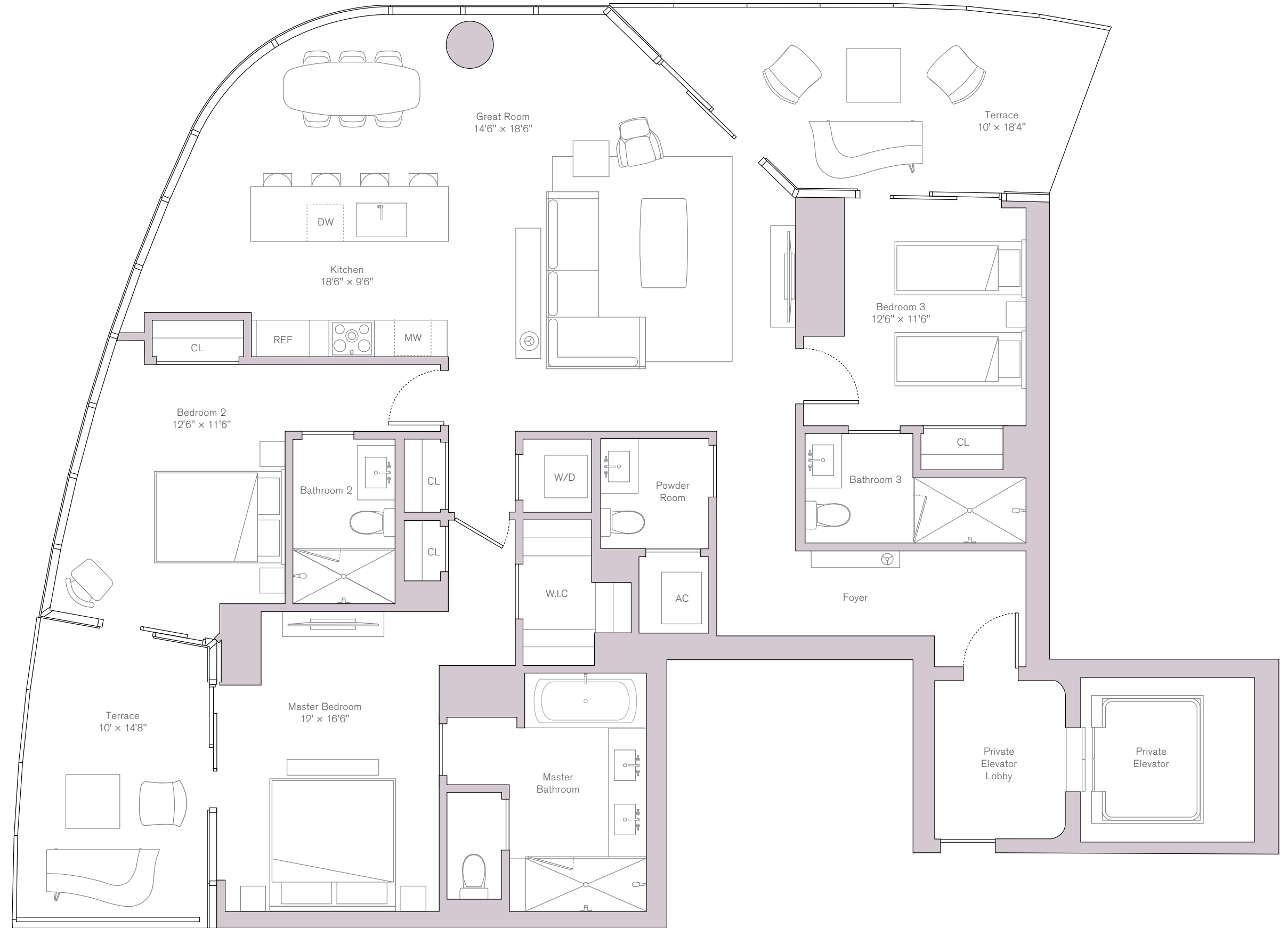
INTERIOR  
1,915 SQ FT / 178 SQ M

EXTERIOR  
356 SQ FT / 33 SQ M

TOTAL  
2,271 SQ FT / 211 SQ M

FEATURES  
3 Bedrooms  
3.5 Bathrooms

Units on Level 30-37  
Interior: 1,939 SQ FT / 180.1 SQ M  
Exterior: 356 SQ FT / 33 SQ M



ORAL REPRESENTATIONS CANNOT BE RELIED UPON AS CORRECTLY STATING THE REPRESENTATIONS OF THE DEVELOPER. FOR CORRECT REPRESENTATIONS, MAKE REFERENCE TO THIS BROCHURE AND TO THE DOCUMENTS REQUIRED BY SECTION 718.503, FLORIDA STATUTES, TO BE FURNISHED BY A DEVELOPER TO A BUYER OR LESSEE. Ceiling heights are measured from top of slab to top of slab. As a result, actual clearance between the top of the finished floor coverings and the underside of the finished ceiling, drop ceiling or soffits will be less. All ceiling heights are approximate and subject to change. All depictions of furniture, appliances, counters, soffits, floor coverings and other matters of detail, including, without limitation, items of finish and decoration, are conceptual only and are not necessarily included in each Unit. Furnishings are only included if and to the extent provided in your purchase agreement. Stated square footages and dimensions are measured to the exterior boundaries of the exterior walls and the centerline of interior demising walls and in fact vary from the square footage and dimensions that would be determined by using the description and definition of the "Unit" set forth in the Declaration (which generally only includes the interior airspace between the perimeter walls and excludes all interior structural components and other common elements). This method is generally used in sales materials and is provided to allow a prospective buyer to compare the Units with units in other condominium projects that utilize the same method. Measurements of rooms set forth on this floor plan are generally taken at the farthest points of each given room (as if the room were a perfect rectangle), without regard for any cutouts or variations. Accordingly, the area of the actual room will typically be smaller than the product obtained by multiplying the stated length and width. All dimensions are estimates which will vary with actual construction, and all floor plans, specifications and other development plans are subject to change and will not necessarily accurately reflect the final plans and specifications for the development. All depictions of appliances, counters, soffits, floor coverings and other matters of detail, including, without limitation, items of finish and decoration, are conceptual only and are not necessarily included in each Unit.

South East Residence  
Levels 38-43 Unit 02

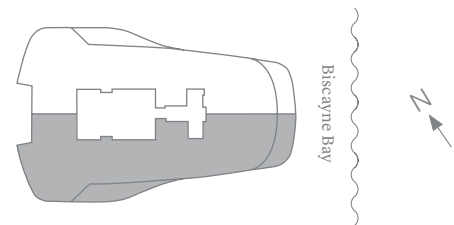
INTERIOR  
4,786 SQ FT / 445 SQ M

EXTERIOR  
812 SQ FT / 75 SQ M

TOTAL  
5,598 SQ FT / 520 SQ M

FEATURES

- 5 Bedrooms
- 6.5 Bathrooms
- Study
- Family Room



North East Residence  
Levels 38-43 Unit 01

INTERIOR  
4,697 SQ FT / 436 SQ M

EXTERIOR  
812 SQ FT / 75 SQ M

TOTAL  
5,509 SQ FT / 512 SQ M

FEATURES

- 5 Bedrooms
- 6.5 Bathrooms
- Study
- Family Room

