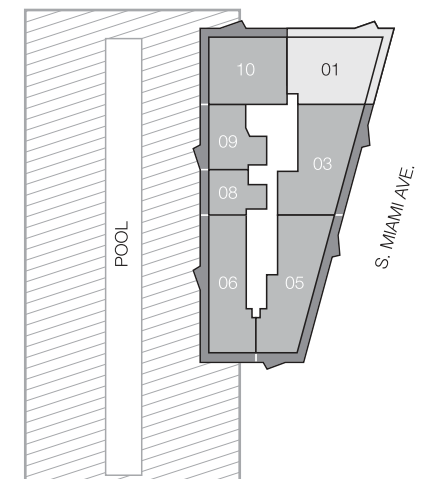


TERRACE EXTENSION 27 SQ. FT.  
 A. FLOOR 50  
 B. FLOOR 49  
 D. FLOOR 52  
 E. FLOOR 51

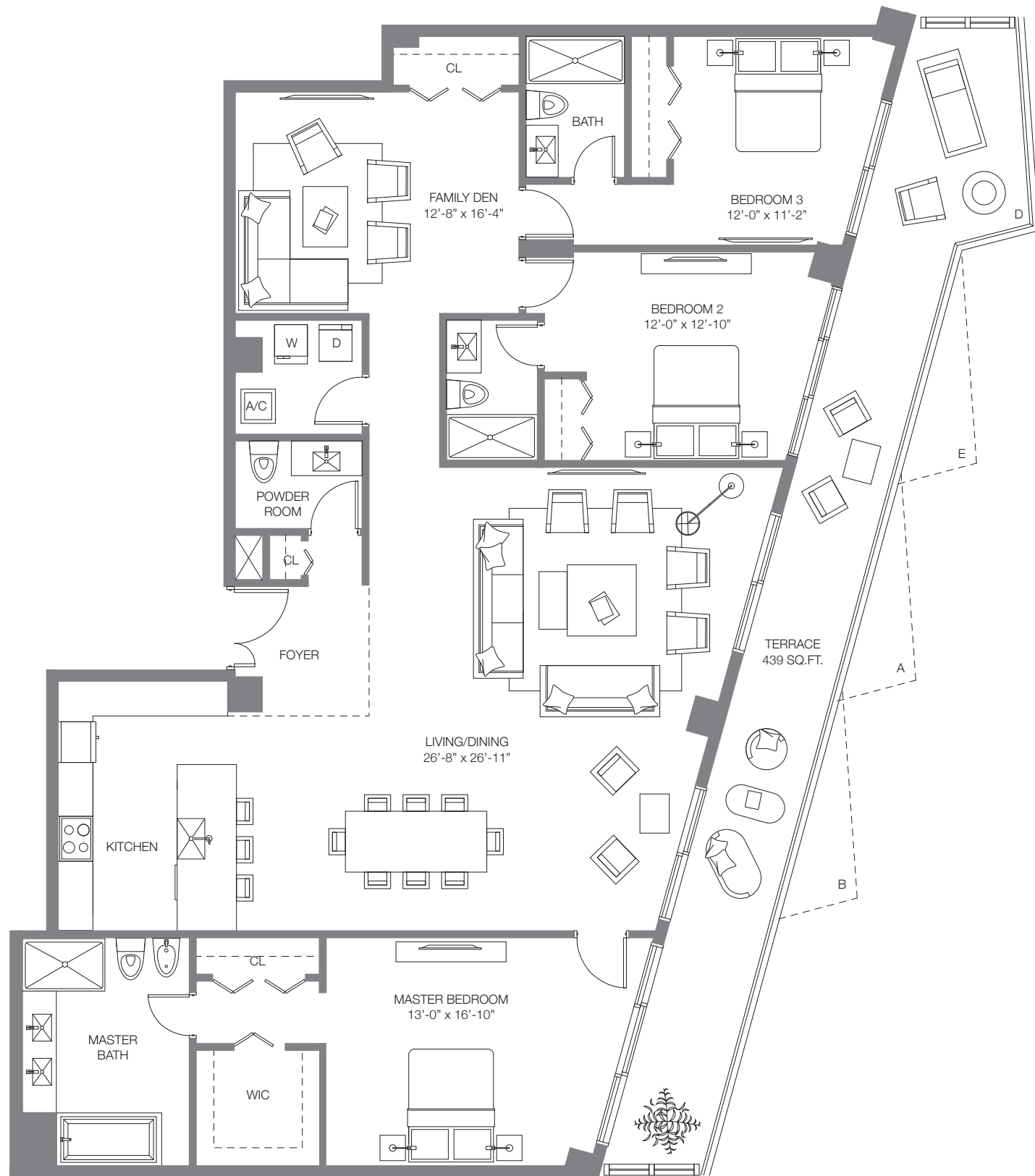


# SLS PH 01

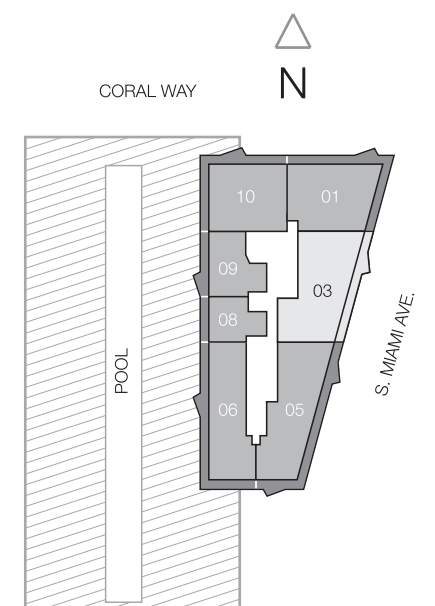
3 BEDROOMS & DEN / 3 1/2 BATHS

A/C INTERIOR AREA	2,006 SQ. FT.	186.36 SQ. M.
TERRACE W/EXTENSION AREA	609 SQ. FT.	56.57 SQ. M.
<b>TOTAL RESIDENCE</b>	<b>2,615 SQ. FT.</b>	<b>242.93 SQ. M.</b>

Stated dimensions are measured to the exterior boundaries of the exterior walls and the centerline of interior demising walls and in fact vary from the dimensions that would be determined by using the description and definition of the "Unit" set forth in the Declaration (which generally only includes the interior airspace between the perimeter walls and excludes interior structural components). For your reference, the area of the Unit, determined in accordance with those defined unit boundaries, is + or - 1,883 sq. ft. for units 01. Note that measurements of rooms set forth on this floor plan are generally taken at the greatest points of each given room (as if the room were a perfect rectangle), without regard for any cutouts. Accordingly, the area of the actual room will typically be smaller than the product obtained by multiplying the stated length times width. All dimensions are approximate and may vary with actual construction, and all floor plans and development plans are subject to change.



TERRACE EXTENSION 27 SQ. FT.  
 A. FLOOR 50  
 B. FLOOR 49  
 D. FLOOR 52  
 E. FLOOR 51

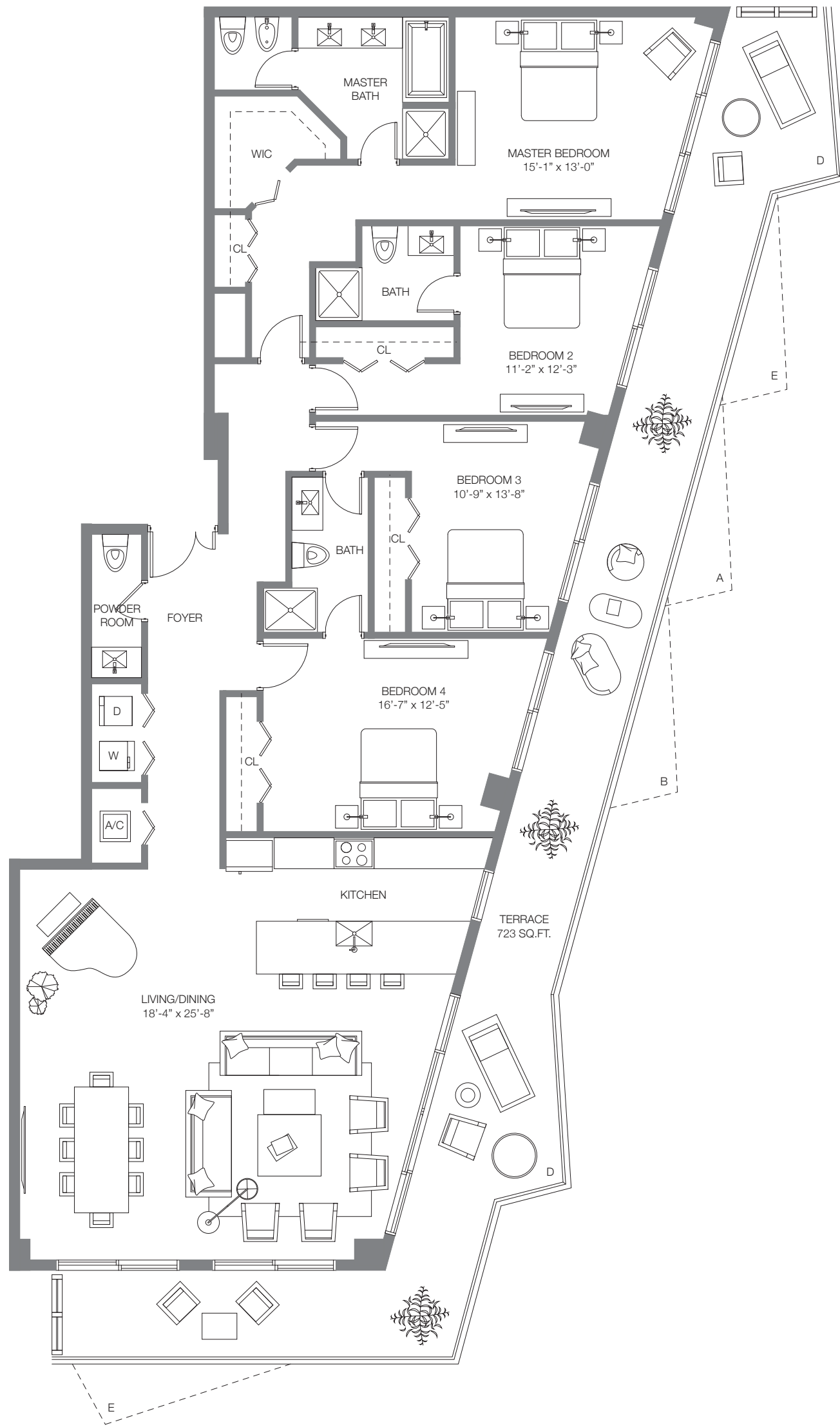


## SLS PH 03

3 BEDROOMS & DEN / 3 1/2 BATHS

A/C INTERIOR AREA	2,274 SQ. FT.	211.26 SQ. M.
TERRACE W/EXTENSION AREA	439 SQ. FT.	40.78 SQ. M.
<b>TOTAL RESIDENCE</b>	<b>2,713 SQ. FT.</b>	<b>252.04 SQ. M.</b>

Stated dimensions are measured to the exterior boundaries of the exterior walls and the centerline of interior demising walls and in fact vary from the dimensions that would be determined by using the description and definition of the "Unit" set forth in the Declaration (which generally only includes the interior airspace between the perimeter walls and excludes interior structural components). For your reference, the area of the Unit, determined in accordance with those defined unit boundaries, is + or - 2,142 sq. ft. for units 03. Note that measurements of rooms set forth on this floor plan are generally taken at the greatest points of each given room (as if the room were a perfect rectangle), without regard for any cutouts. Accordingly, the area of the actual room will typically be smaller than the product obtained by multiplying the stated length times width. All dimensions are approximate and may vary with actual construction, and all floor plans and development plans are subject to change.



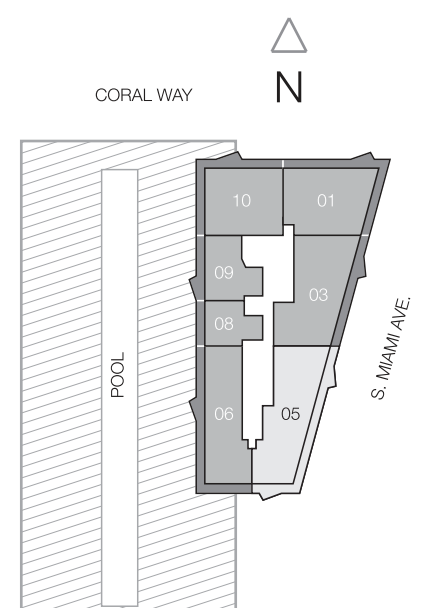
TERRACE EXTENSION 27 SQ. FT.  
 A. FLOOR 50  
 B. FLOOR 49  
 D. FLOOR 52  
 E. FLOOR 51

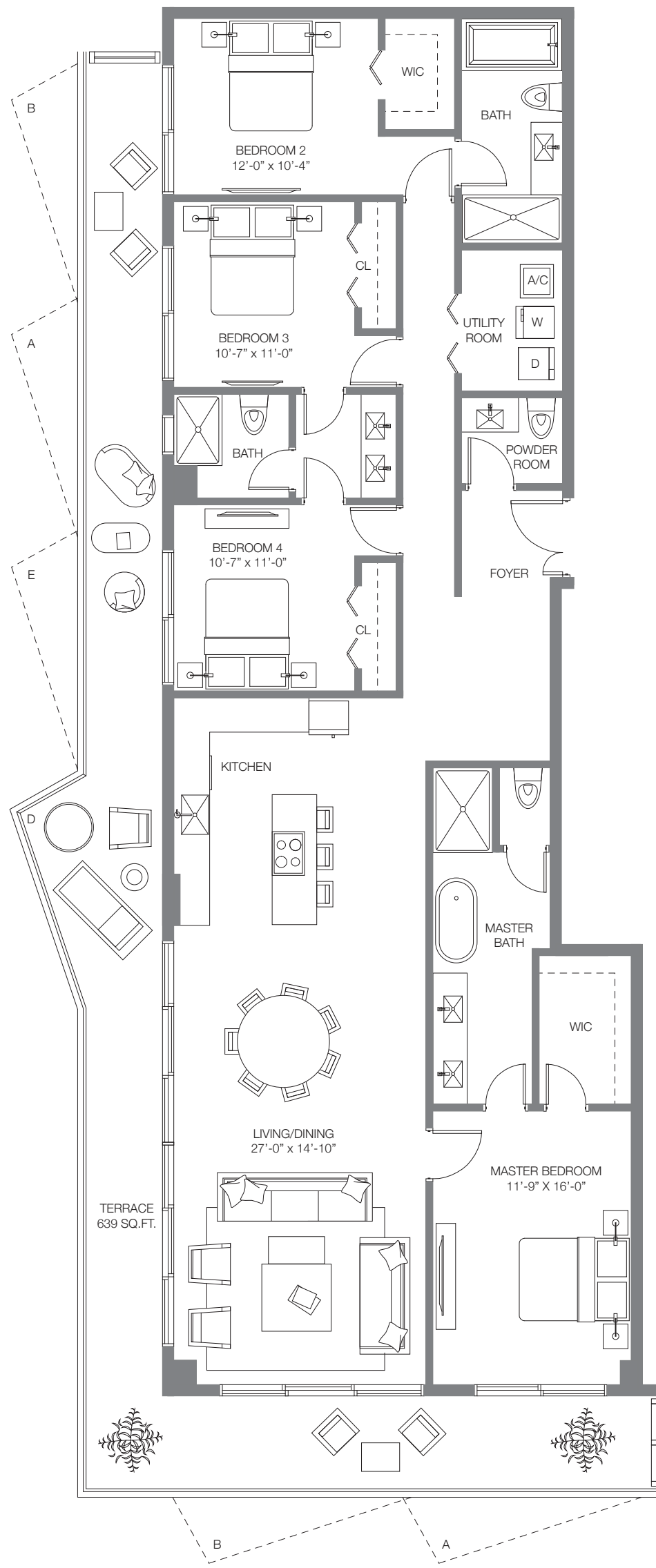
## SLS PH 05

4 BEDROOMS / 3 1/2 BATHS

A/C INTERIOR AREA	2,336 SQ. FT.	217.02 SQ. M.
TERRACE W/EXTENSION AREA	723 SQ. FT.	67.16 SQ. M.
<b>TOTAL RESIDENCE</b>	<b>3,059 SQ. FT.</b>	<b>284.18 SQ. M.</b>

Stated dimensions are measured to the exterior boundaries of the exterior walls and the centerline of interior demising walls and in fact vary from the dimensions that would be determined by using the description and definition of the "Unit" set forth in the Declaration (which generally only includes the interior airspace between the perimeter walls and excludes interior structural components). For your reference, the area of the Unit, determined in accordance with those defined unit boundaries, is + or - 2,174 sq. ft. for units 05. Note that measurements of rooms set forth on this floor plan are generally taken at the greatest points of each given room (as if the room were a perfect rectangle), without regard for any cutouts. Accordingly, the area of the actual room will typically be smaller than the product obtained by multiplying the stated length times width. All dimensions are approximate and may vary with actual construction, and all floor plans and development plans are subject to change.





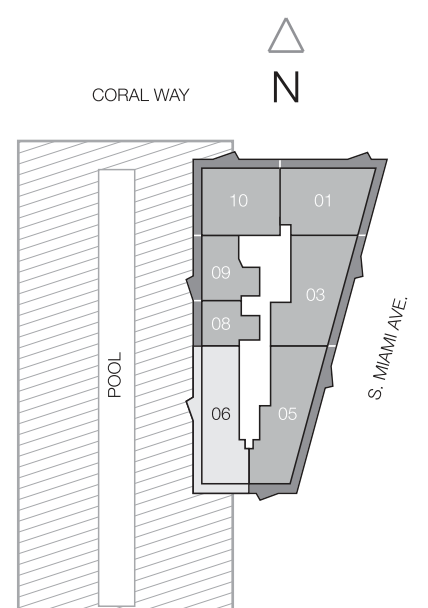
TERRACE EXTENSION 27 SQ. FT.  
 A. FLOOR 50  
 B. FLOOR 49  
 D. FLOOR 52  
 E. FLOOR 51

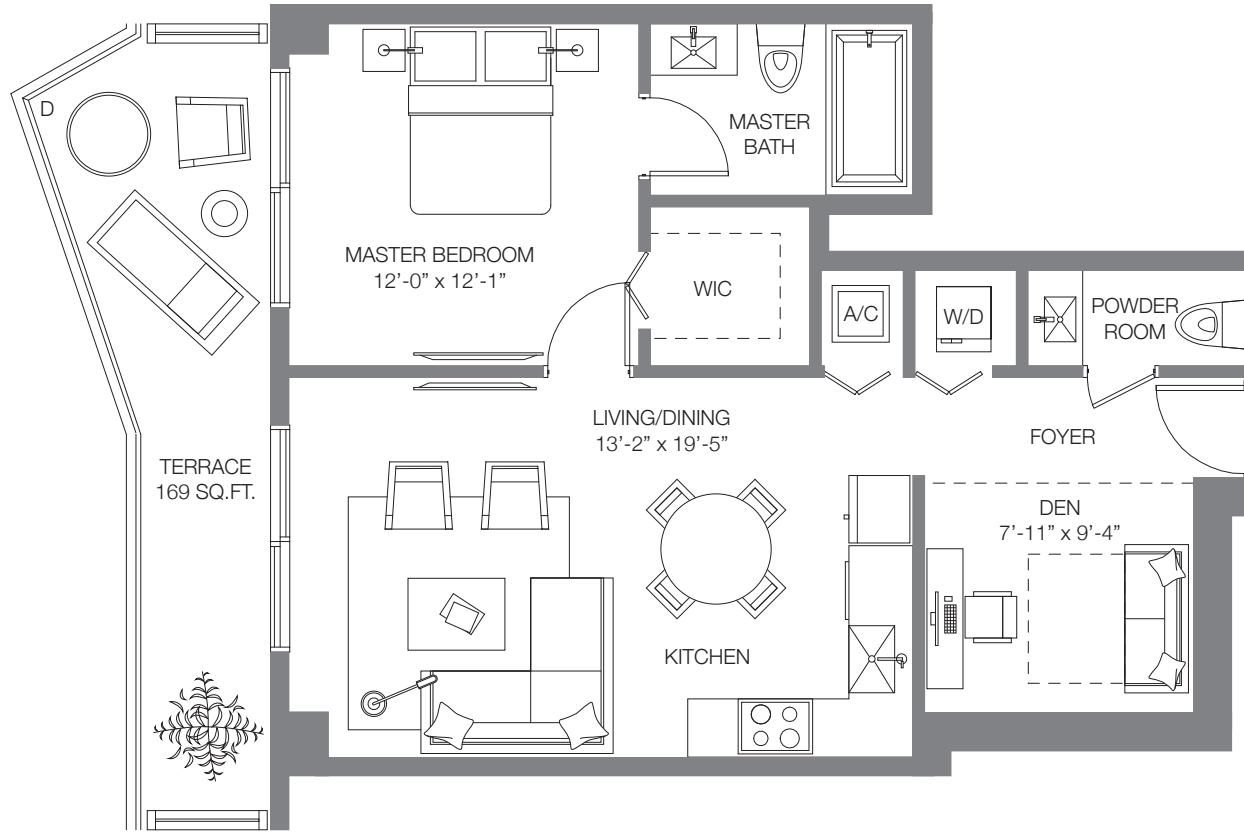
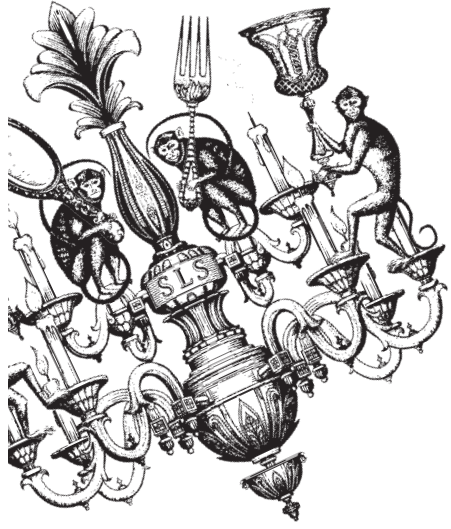
## SLS PH 06

4 BEDROOMS / 3 1/2 BATHS

A/C INTERIOR AREA	2,084 SQ. FT.	193.60 SQ. M.
TERRACE W/EXTENSION AREA	639 SQ. FT.	59.36 SQ. M.
<b>TOTAL RESIDENCE</b>	<b>2,723 SQ. FT.</b>	<b>252.96 SQ. M.</b>

Stated dimensions are measured to the exterior boundaries of the exterior walls and the centerline of interior demising walls and in fact vary from the dimensions that would be determined by using the description and definition of the "Unit" set forth in the Declaration (which generally only includes the interior airspace between the perimeter walls and excludes interior structural components). For your reference, the area of the Unit, determined in accordance with those defined unit boundaries, is + or - 1,921 sq. ft. for units 06. Note that measurements of rooms set forth on this floor plan are generally taken at the greatest points of each given room (as if the room were a perfect rectangle), without regard for any cutouts. Accordingly, the area of the actual room will typically be smaller than the product obtained by multiplying the stated length times width. All dimensions are approximate and may vary with actual construction, and all floor plans and development plans are subject to change.





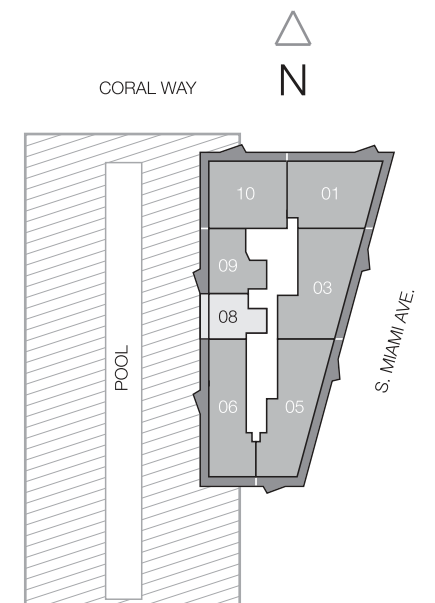
TERRACE EXTENSION 27 SQ. FT.  
D, FLOOR 52

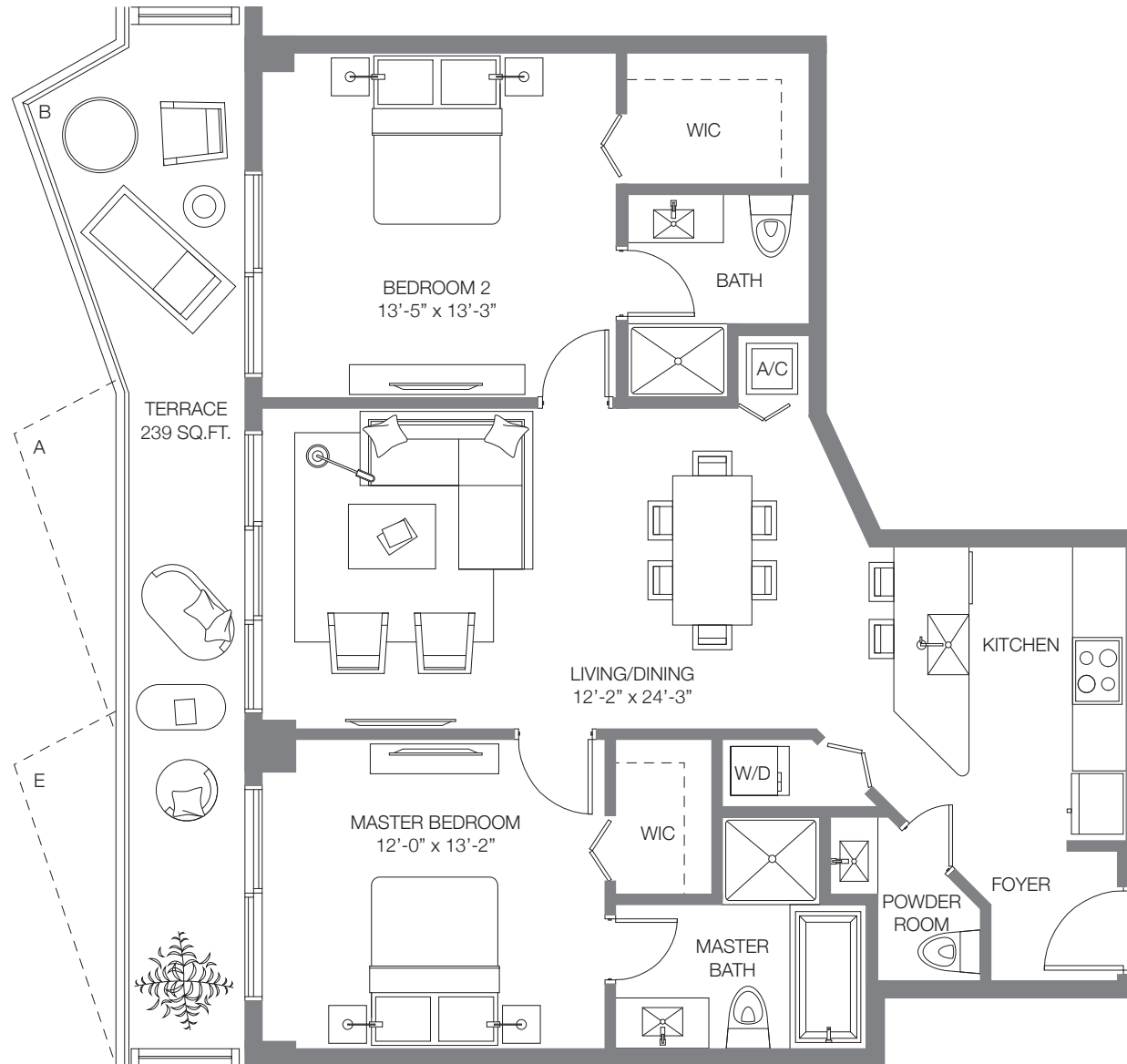
## SLS PH 08

1 BEDROOM / 1 ½ BATHS

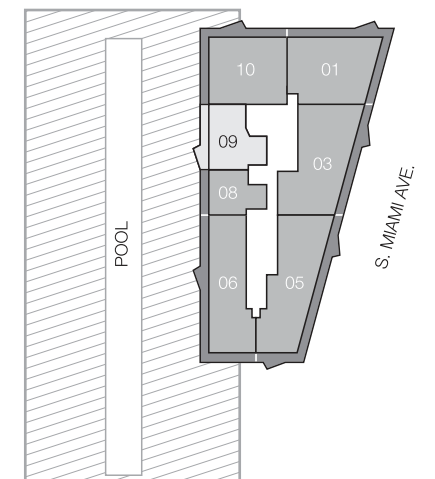
A/C INTERIOR AREA	801 SQ. FT.	74.41 SQ. M.
TERRACE W/EXTENSION AREA	169 SQ. FT.	15.70 SQ. M.
<b>TOTAL RESIDENCE</b>	<b>970 SQ. FT.</b>	<b>90.11 SQ. M.</b>

Stated dimensions are measured to the exterior boundaries of the exterior walls and the centerline of interior demising walls and in fact vary from the dimensions that would be determined by using the description and definition of the "Unit" set forth in the Declaration (which generally only includes the interior airspace between the perimeter walls and excludes interior structural components). For your reference, the area of the Unit, determined in accordance with those defined unit boundaries, is + or - 706 sq. ft. for units 08. Note that measurements of rooms set forth on this floor plan are generally taken at the greatest points of each given room (as if the room were a perfect rectangle), without regard for any cutouts. Accordingly, the area of the actual room will typically be smaller than the product obtained by multiplying the stated length times width. All dimensions are approximate and may vary with actual construction, and all floor plans and development plans are subject to change.





TERRACE EXTENSION 27 SQ. FT.  
 A. FLOOR 50  
 B. FLOOR 49  
 E. FLOOR 51

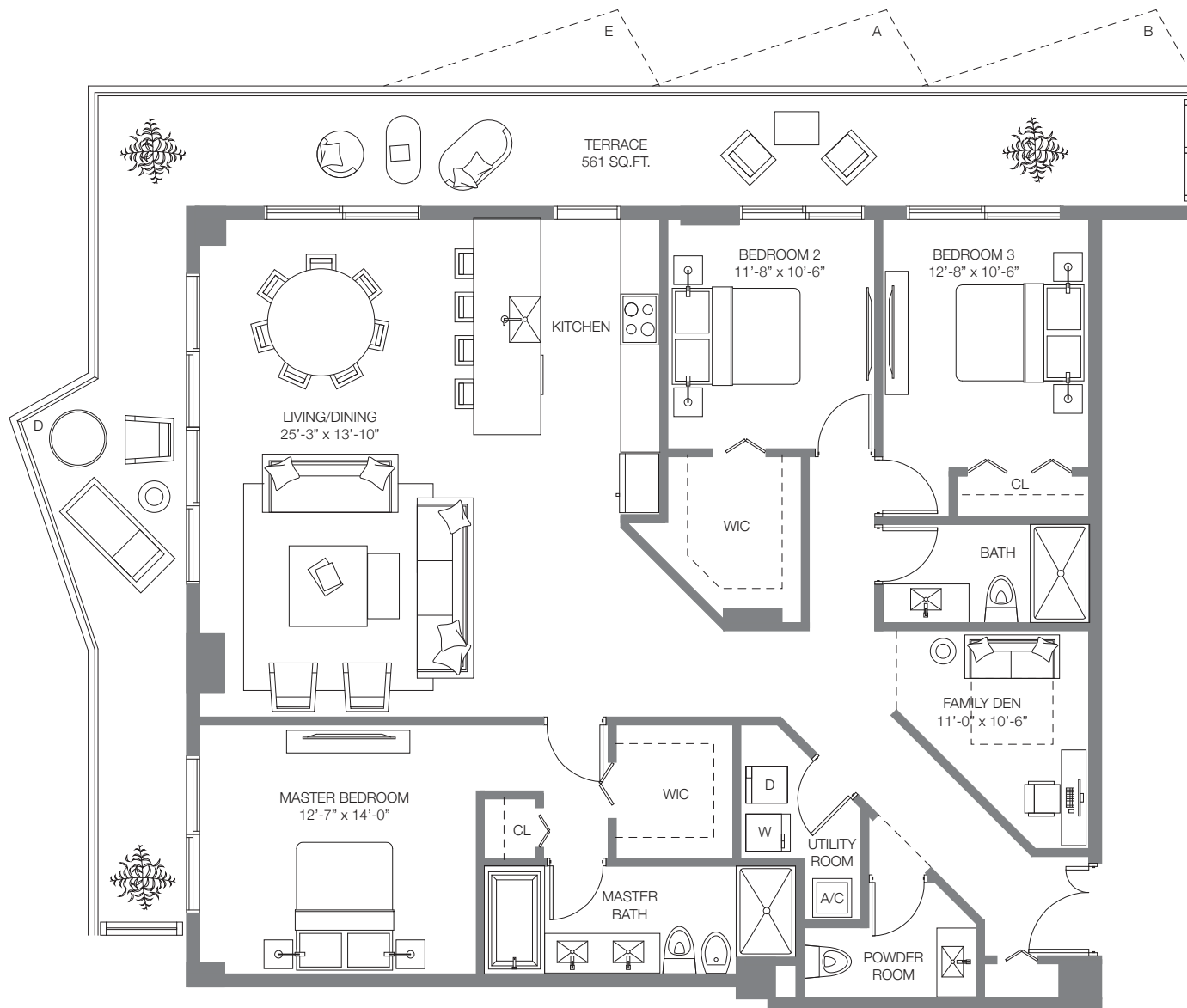


## SLS PH 09

2 BEDROOMS / 2 ½ BATHS

A/C INTERIOR AREA	1,115 SQ. FT.	103.58 SQ. M.
TERRACE W/EXTENSION AREA	239 SQ. FT.	22.20 SQ. M.
<b>TOTAL RESIDENCE</b>	<b>1,354 SQ. FT.</b>	<b>125.78 SQ. M.</b>

Stated dimensions are measured to the exterior boundaries of the exterior walls and the centerline of interior demising walls and in fact vary from the dimensions that would be determined by using the description and definition of the "Unit" set forth in the Declaration (which generally only includes the interior airspace between the perimeter walls and excludes interior structural components). For your reference, the area of the Unit, determined in accordance with those defined unit boundaries, is + or - 1,012 sq. ft. for units 09. Note that measurements of rooms set forth on this floor plan are generally taken at the greatest points of each given room (as if the room were a perfect rectangle), without regard for any cutouts. Accordingly, the area of the actual room will typically be smaller than the product obtained by multiplying the stated length times width. All dimensions are approximate and may vary with actual construction, and all floor plans and development plans are subject to change.



TERRACE EXTENSION 27 SQ. FT.

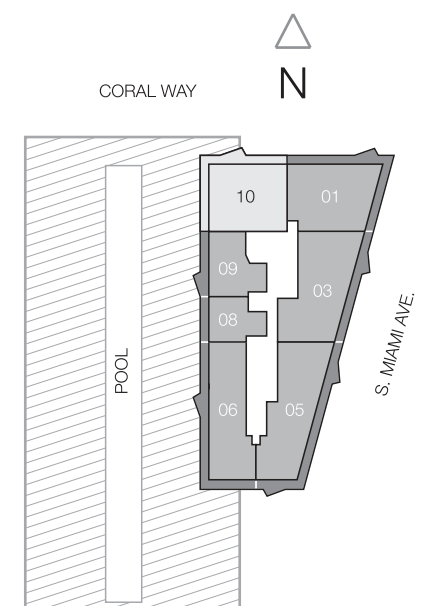
- A. FLOOR 50
- B. FLOOR 49
- D. FLOOR 52
- E. FLOOR 51

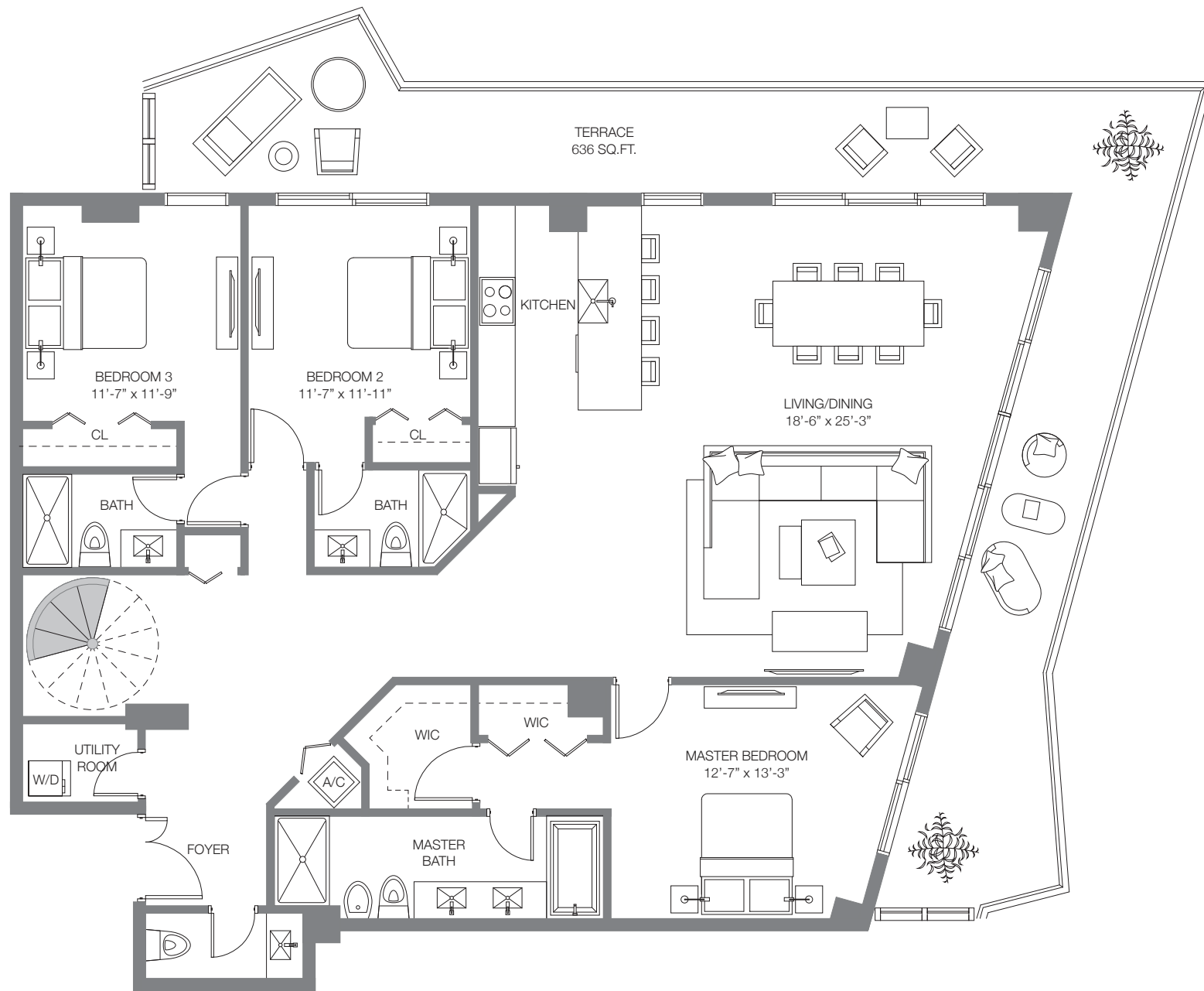
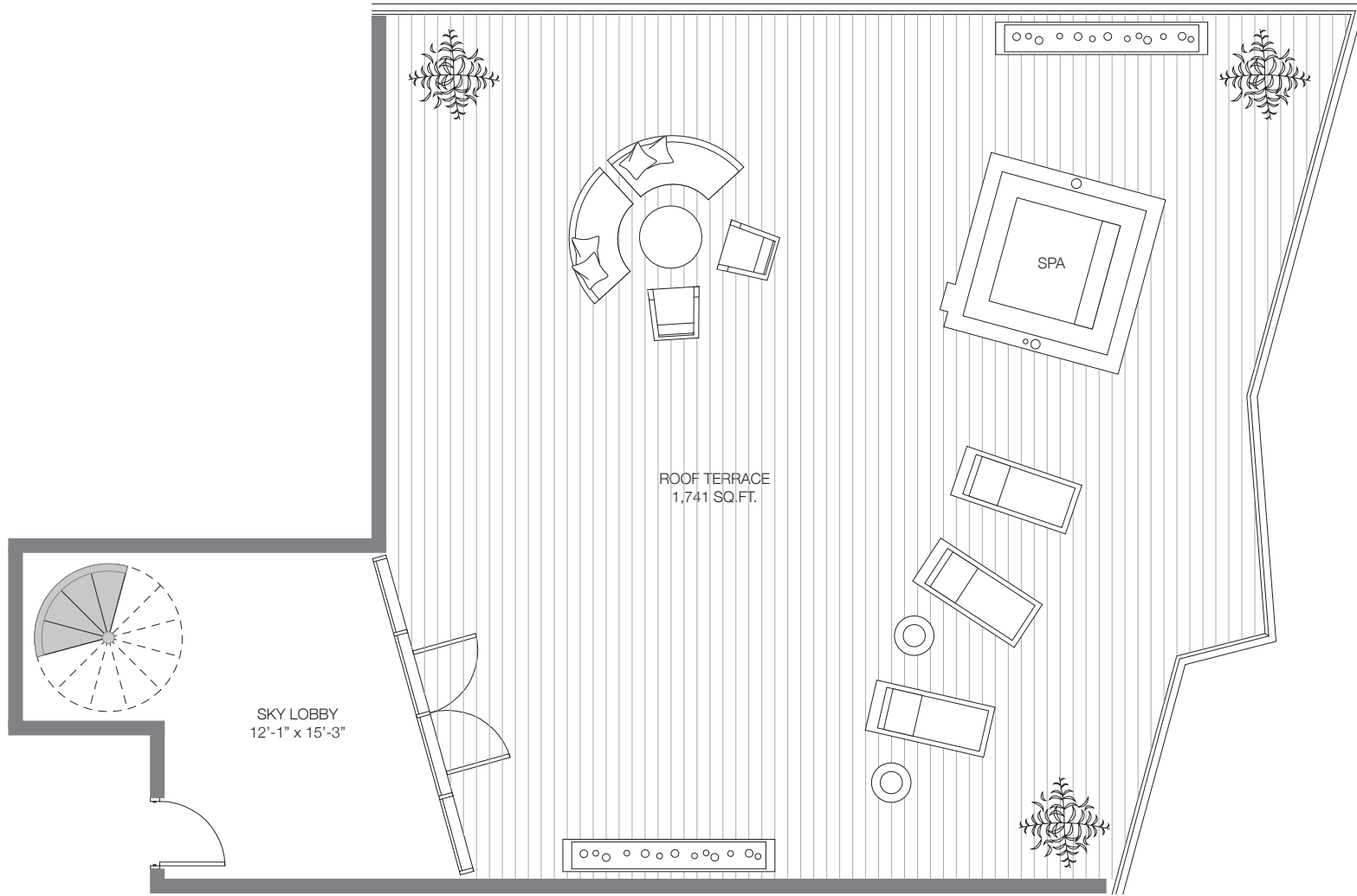
## SLS PH 10

3 BEDROOMS & DEN / 2 ½ BATHS

A/C INTERIOR AREA	1,845 SQ. FT.	171.40 SQ. M.
TERRACE W/EXTENSION AREA	561 SQ. FT.	52.11 SQ. M.
<b>TOTAL RESIDENCE</b>	<b>2,406 SQ. FT.</b>	<b>223.51 SQ. M.</b>

Stated dimensions are measured to the exterior boundaries of the exterior walls and the centerline of interior demising walls and in fact vary from the dimensions that would be determined by using the description and definition of the "Unit" set forth in the Declaration (which generally only includes the interior airspace between the perimeter walls and excludes interior structural components). For your reference, the area of the Unit, determined in accordance with those defined unit boundaries, is + or - 1,728 sq. ft. for units 10. Note that measurements of rooms set forth on this floor plan are generally taken at the greatest points of each given room (as if the room were a perfect rectangle), without regard for any cutouts. Accordingly, the area of the actual room will typically be smaller than the product obtained by multiplying the stated length times width. All dimensions are approximate and may vary with actual construction, and all floor plans and development plans are subject to change.



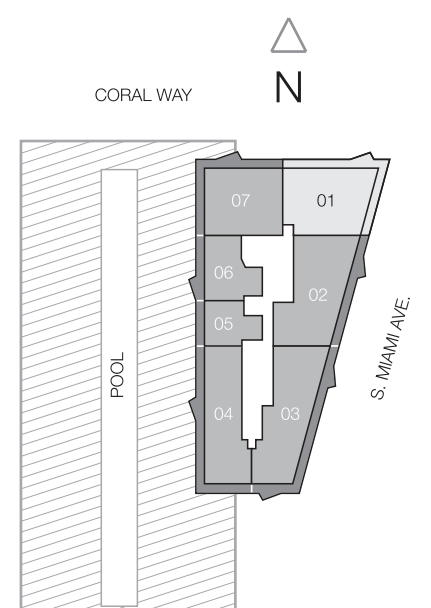


## SLS UPH-1

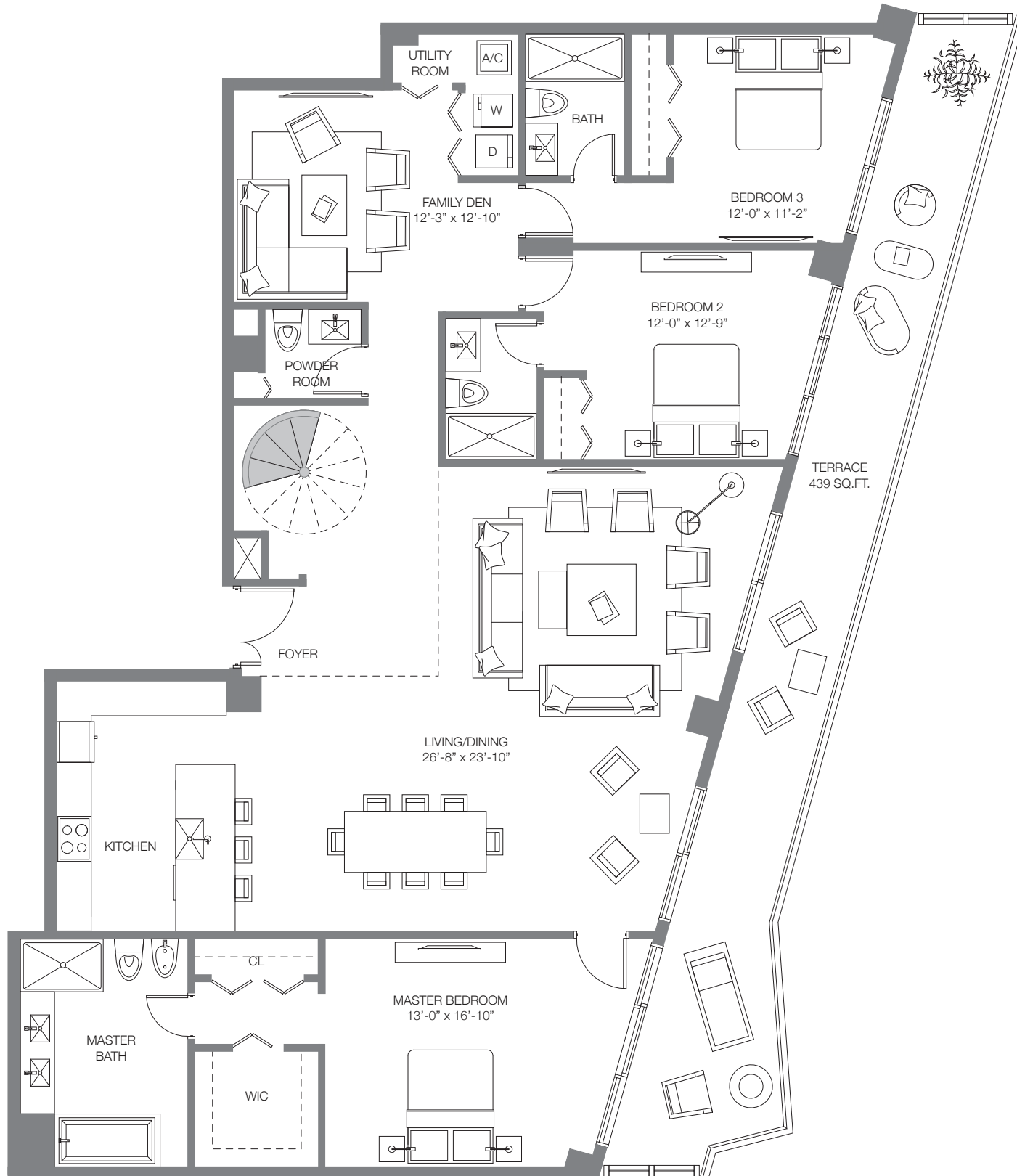
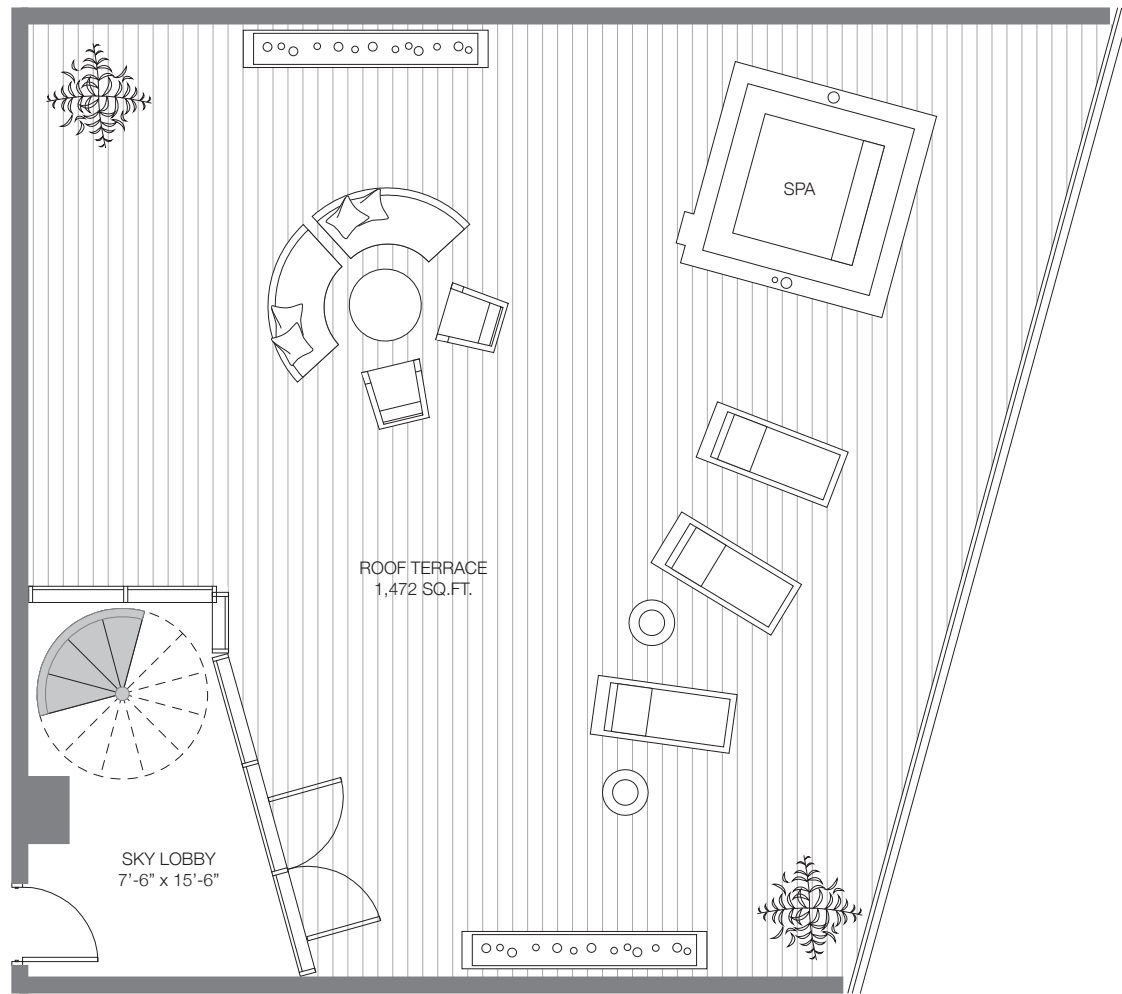
3 BEDROOMS / 3 1/2 BATHS

A/C INTERIOR AREA	2,297 SQ. FT.	213.39 SQ. M.
TERRACES	2,377 SQ. FT.	220.83 SQ. M.
<b>TOTAL RESIDENCE</b>	<b>4,674 SQ. FT.</b>	<b>434.22 SQ. M.</b>

Stated dimensions are measured to the exterior boundaries of the exterior walls and the centerline of interior demising walls and in fact vary from the dimensions that would be determined by using the description and definition of the "Unit" set forth in the Declaration (which generally only includes the interior airspace between the perimeter walls and excludes interior structural components). For your reference, the area of the Unit, determined in accordance with those defined unit boundaries, is + or - 2,117 sq. ft. for units 01. Note that measurements of rooms set forth on this floor plan are generally taken at the greatest points of each given room (as if the room were a perfect rectangle), without regard for any cutouts. Accordingly, the area of the actual room will typically be smaller than the product obtained by multiplying the stated length times width. All dimensions are approximate and may vary with actual construction, and all floor plans and development plans are subject to change.





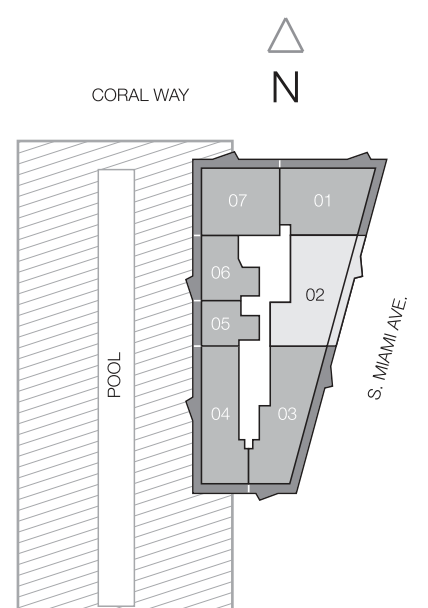


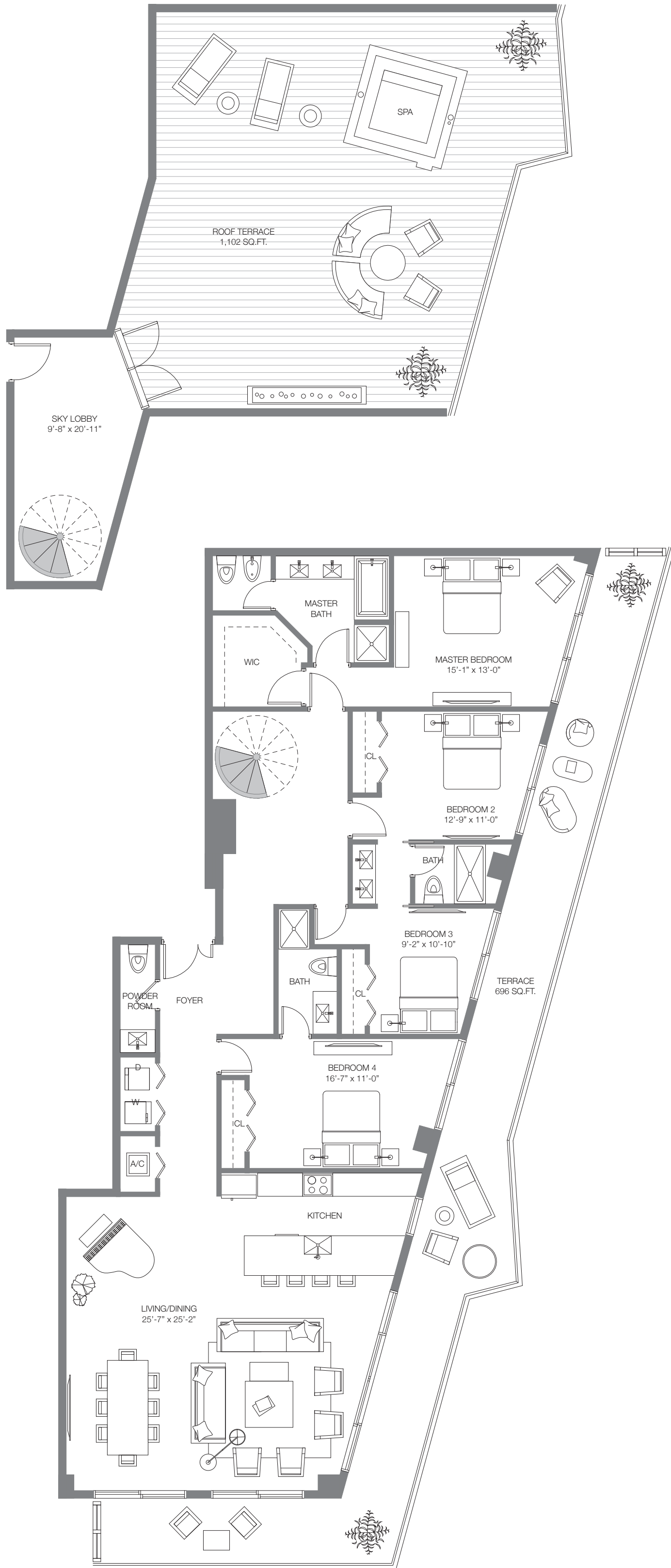
## SLS UPH-2

3 BEDROOMS & DEN / 3 1/2 BATHS

A/C INTERIOR AREA	2,459 SQ. FT.	228.44 SQ. M.
TERRACES	1,911 SQ. FT.	177.53 SQ. M.
<b>TOTAL RESIDENCE</b>	<b>4,370 SQ. FT.</b>	<b>405.97 SQ. M.</b>

Stated dimensions are measured to the exterior boundaries of the exterior walls and the centerline of interior demising walls and in fact vary from the dimensions that would be determined by using the description and definition of the "Unit" set forth in the Declaration (which generally only includes the interior airspace between the perimeter walls and excludes interior structural components). For your reference, the area of the Unit, determined in accordance with those defined unit boundaries, is + or - 2,279 sq. ft. for units 02. Note that measurements of rooms set forth on this floor plan are generally taken at the greatest points of each given room (as if the room were a perfect rectangle), without regard for any cutouts. Accordingly, the area of the actual room will typically be smaller than the product obtained by multiplying the stated length times width. All dimensions are approximate and may vary with actual construction, and all floor plans and development plans are subject to change.



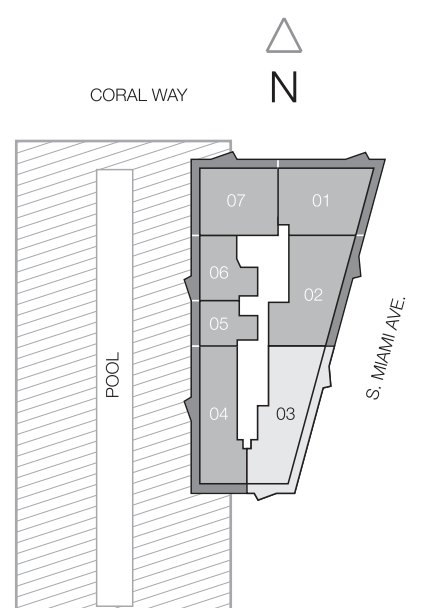


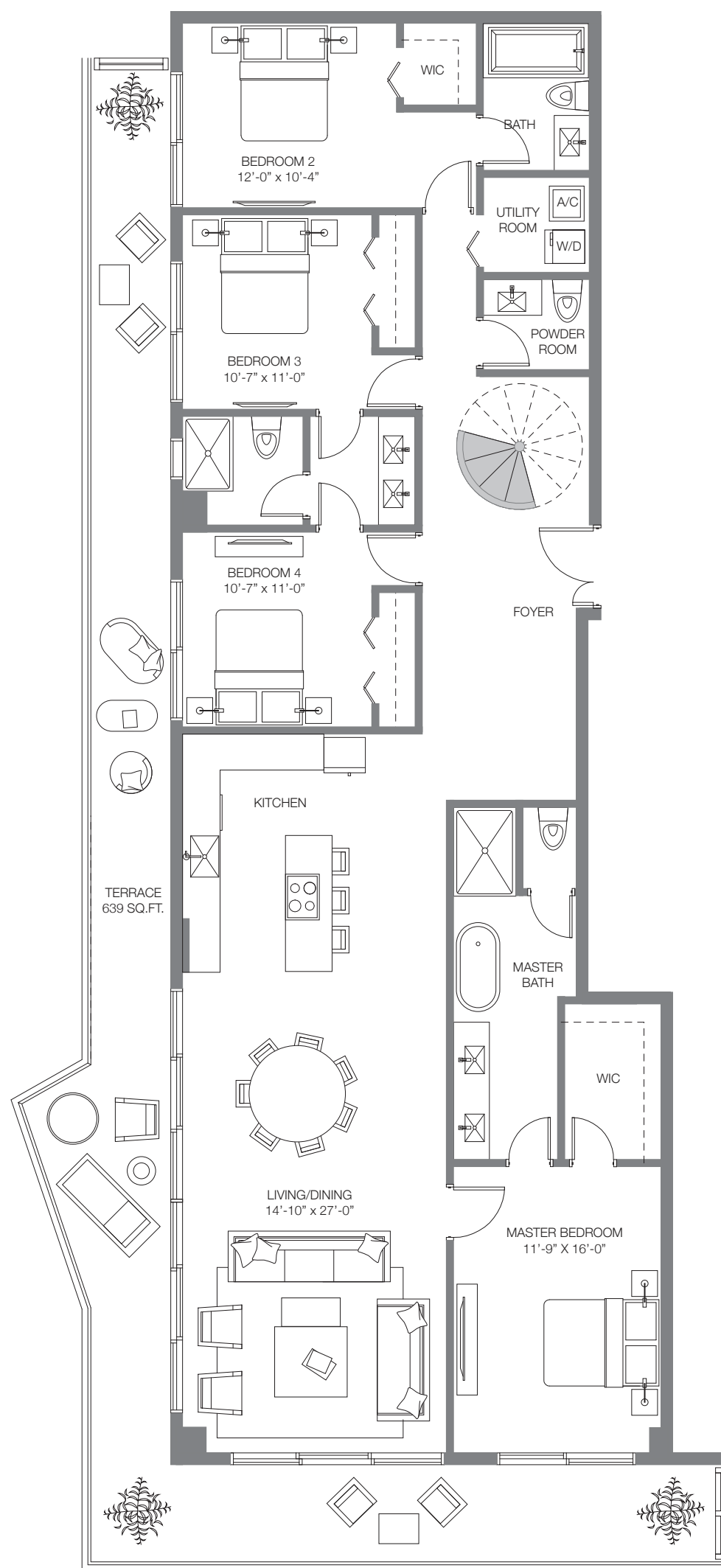
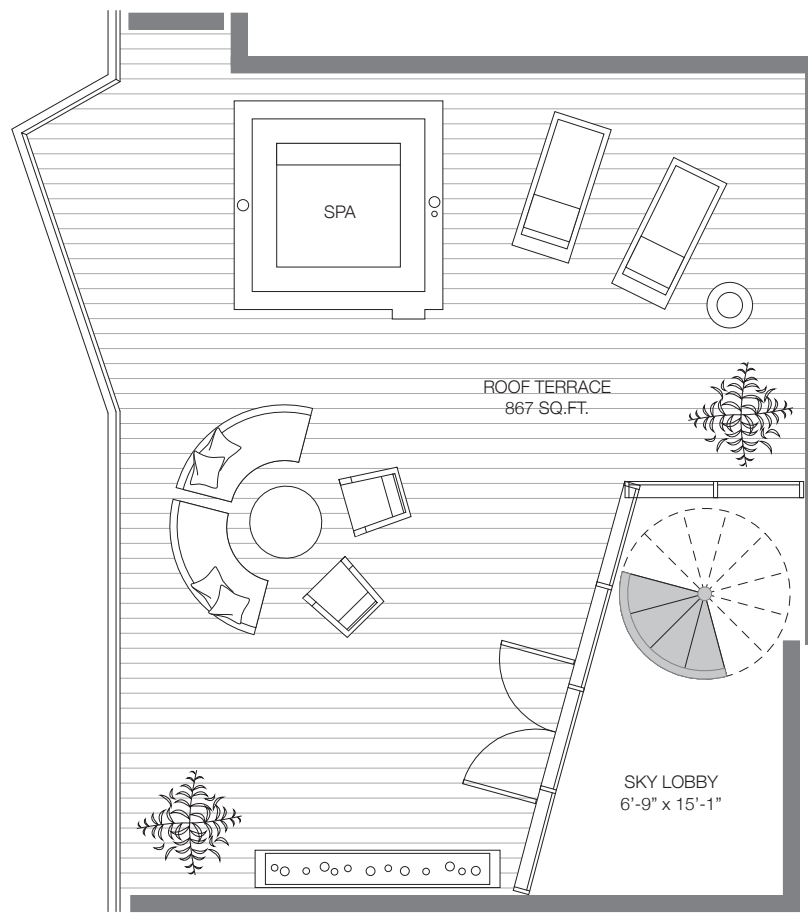
### SLS UPH-3

4 BEDROOMS / 3 1/2 BATHS

A/C INTERIOR AREA	2,571 SQ. FT.	238.85 SQ. M.
TERRACES	1,798 SQ. FT.	167.03 SQ. M.
<b>TOTAL RESIDENCE</b>	<b>4,369 SQ. FT.</b>	<b>405.88 SQ. M.</b>

Stated dimensions are measured to the exterior boundaries of the exterior walls and the centerline of interior demising walls and in fact vary from the dimensions that would be determined by using the description and definition of the "Unit" set forth in the Declaration (which generally only includes the interior airspace between the perimeter walls and excludes interior structural components). For your reference, the area of the Unit, determined in accordance with those defined unit boundaries, is + or - 2,358 sq. ft. for units 03. Note that measurements of rooms set forth on this floor plan are generally taken at the greatest points of each given room (as if the room were a perfect rectangle), without regard for any cutouts. Accordingly, the area of the actual room will typically be smaller than the product obtained by multiplying the stated length times width. All dimensions are approximate and may vary with actual construction, and all floor plans and development plans are subject to change.



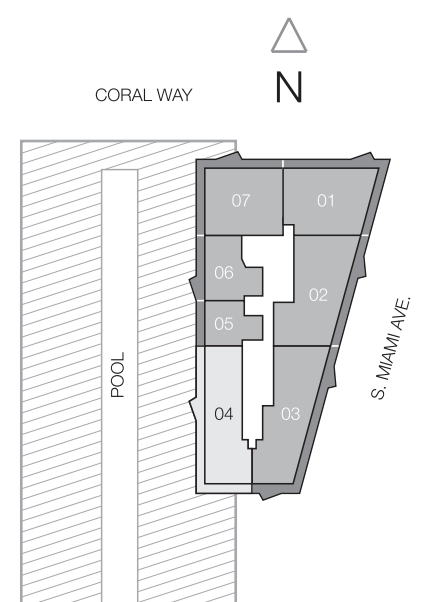


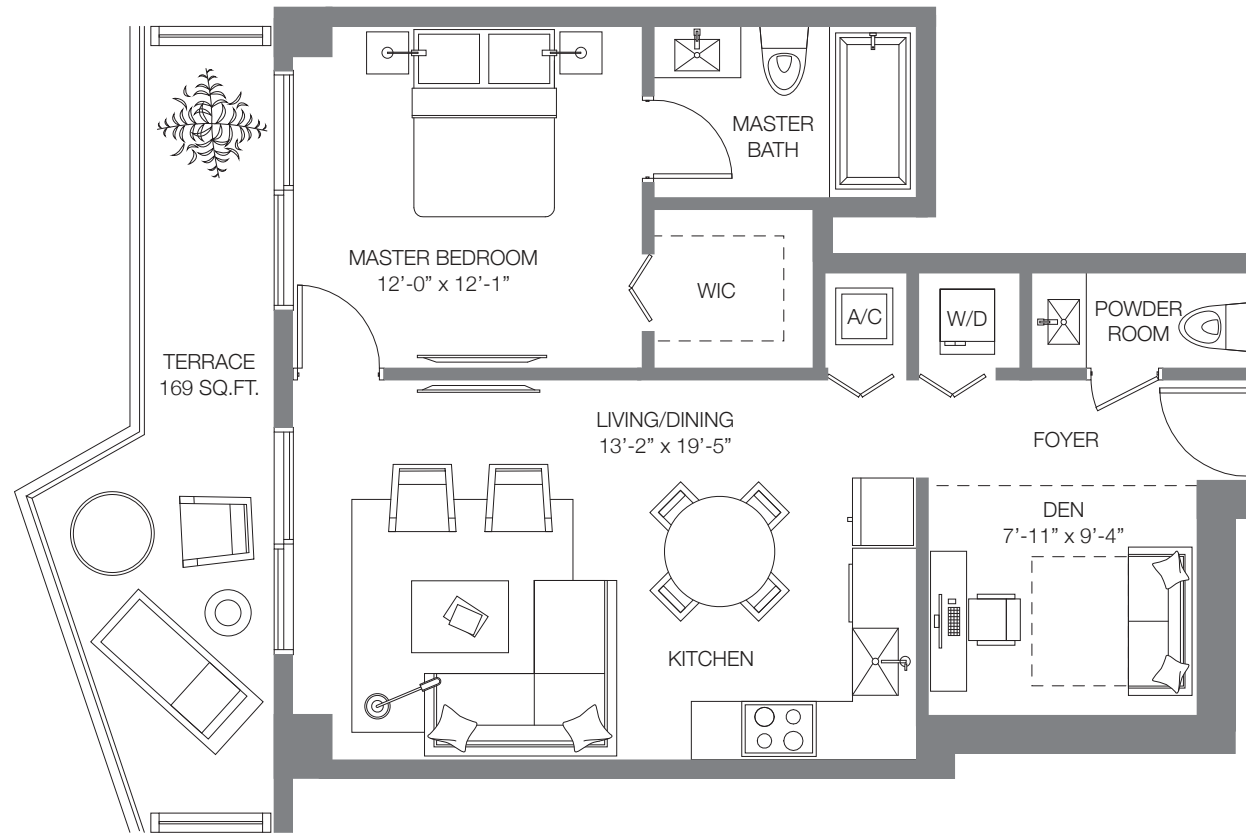
## SLS UPH-4

4 BEDROOMS / 3 1/2 BATHS

A/C INTERIOR AREA	2,268 SQ. FT.	210.70 SQ. M.
TERRACES	1,506 SQ. FT.	139.91 SQ. M.
<b>TOTAL RESIDENCE</b>	<b>3,774 SQ. FT.</b>	<b>350.61.06 SQ. M.</b>

Stated dimensions are measured to the exterior boundaries of the exterior walls and the centerline of interior demising walls and in fact vary from the dimensions that would be determined by using the description and definition of the "Unit" set forth in the Declaration (which generally only includes the interior airspace between the perimeter walls and excludes interior structural components). For your reference, the area of the Unit, determined in accordance with those defined unit boundaries, is + or - 2,060 sq. ft. for units 04. Note that measurements of rooms set forth on this floor plan are generally taken at the greatest points of each given room (as if the room were a perfect rectangle), without regard for any cutouts. Accordingly, the area of the actual room will typically be smaller than the product obtained by multiplying the stated length times width. All dimensions are approximate and may vary with actual construction, and all floor plans and development plans are subject to change.



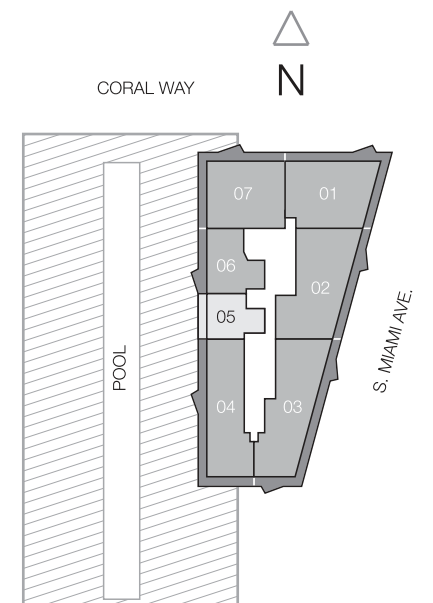


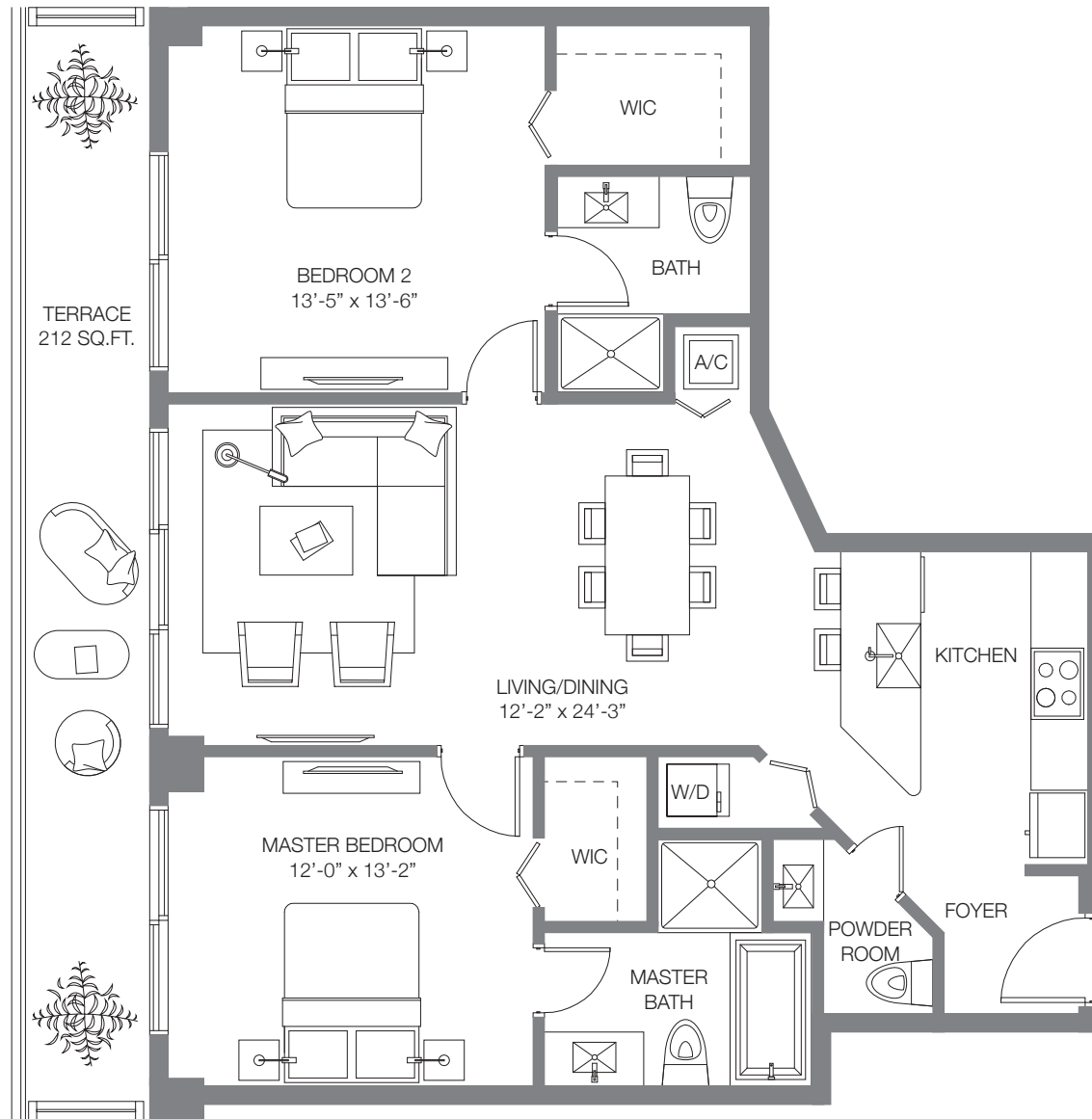
## SLS UPH-5

1 BEDROOM & DEN / 1 ½ BATHS

A/C INTERIOR AREA	801 SQ. FT.	74.41 SQ. M.
TERRACE	169 SQ. FT.	15.70 SQ. M.
<b>TOTAL RESIDENCE</b>	<b>970 SQ. FT.</b>	<b>90.11 SQ. M.</b>

Stated dimensions are measured to the exterior boundaries of the exterior walls and the centerline of interior demising walls and in fact vary from the dimensions that would be determined by using the description and definition of the "Unit" set forth in the Declaration (which generally only includes the interior airspace between the perimeter walls and excludes interior structural components). For your reference, the area of the Unit, determined in accordance with those defined unit boundaries, is + or - 706 sq. ft. for units 05. Note that measurements of rooms set forth on this floor plan are generally taken at the greatest points of each given room (as if the room were a perfect rectangle), without regard for any cutouts. Accordingly, the area of the actual room will typically be smaller than the product obtained by multiplying the stated length times width. All dimensions are approximate and may vary with actual construction, and all floor plans and development plans are subject to change.



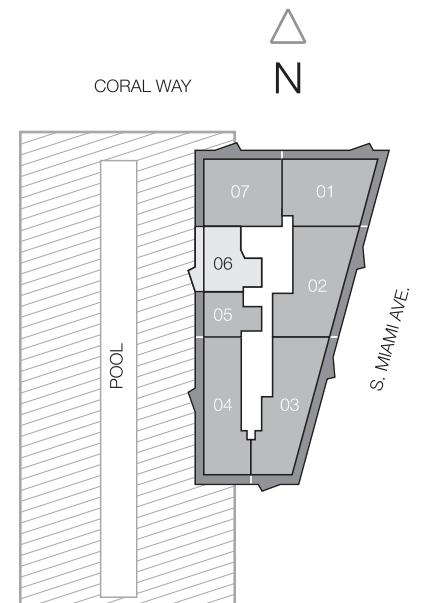


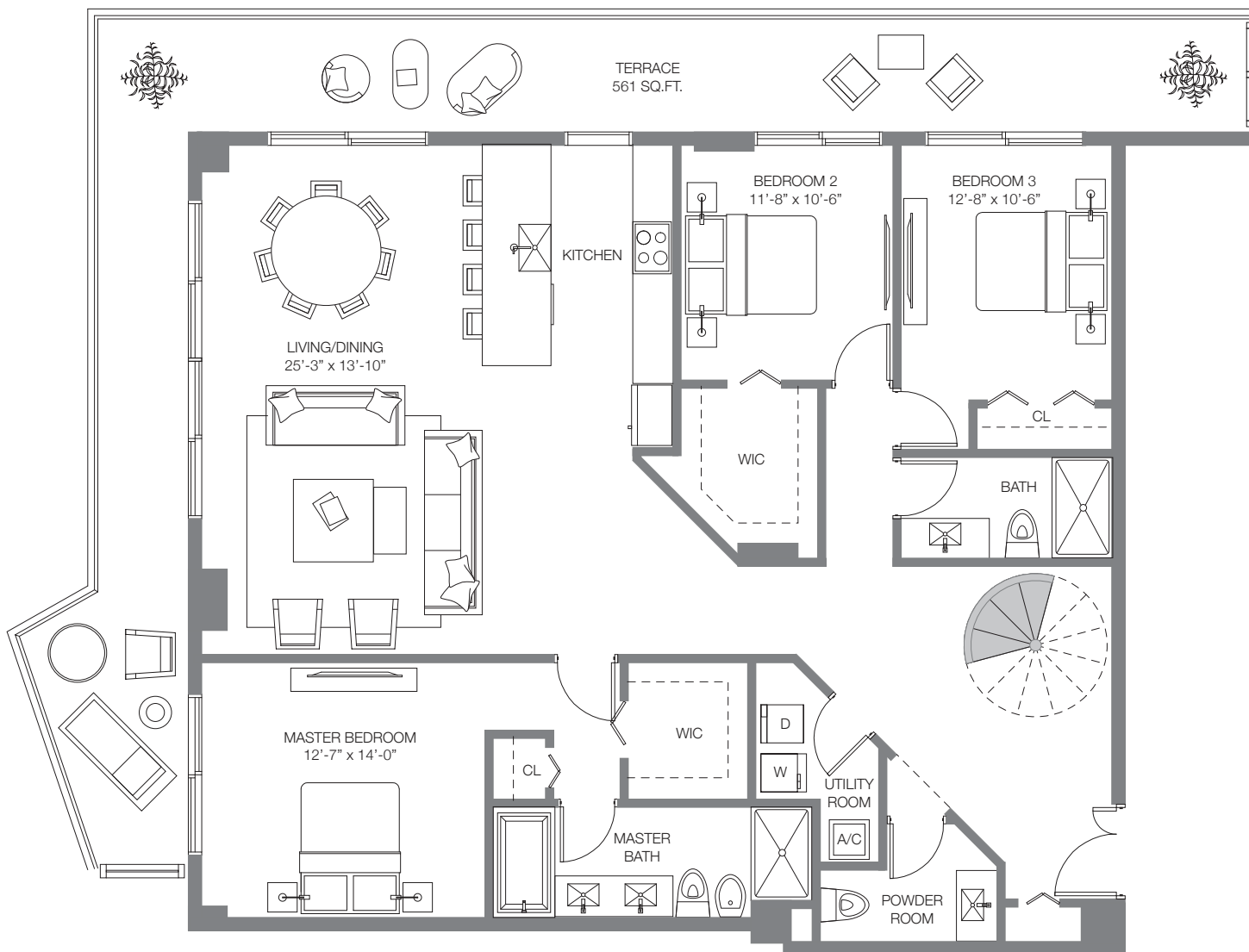
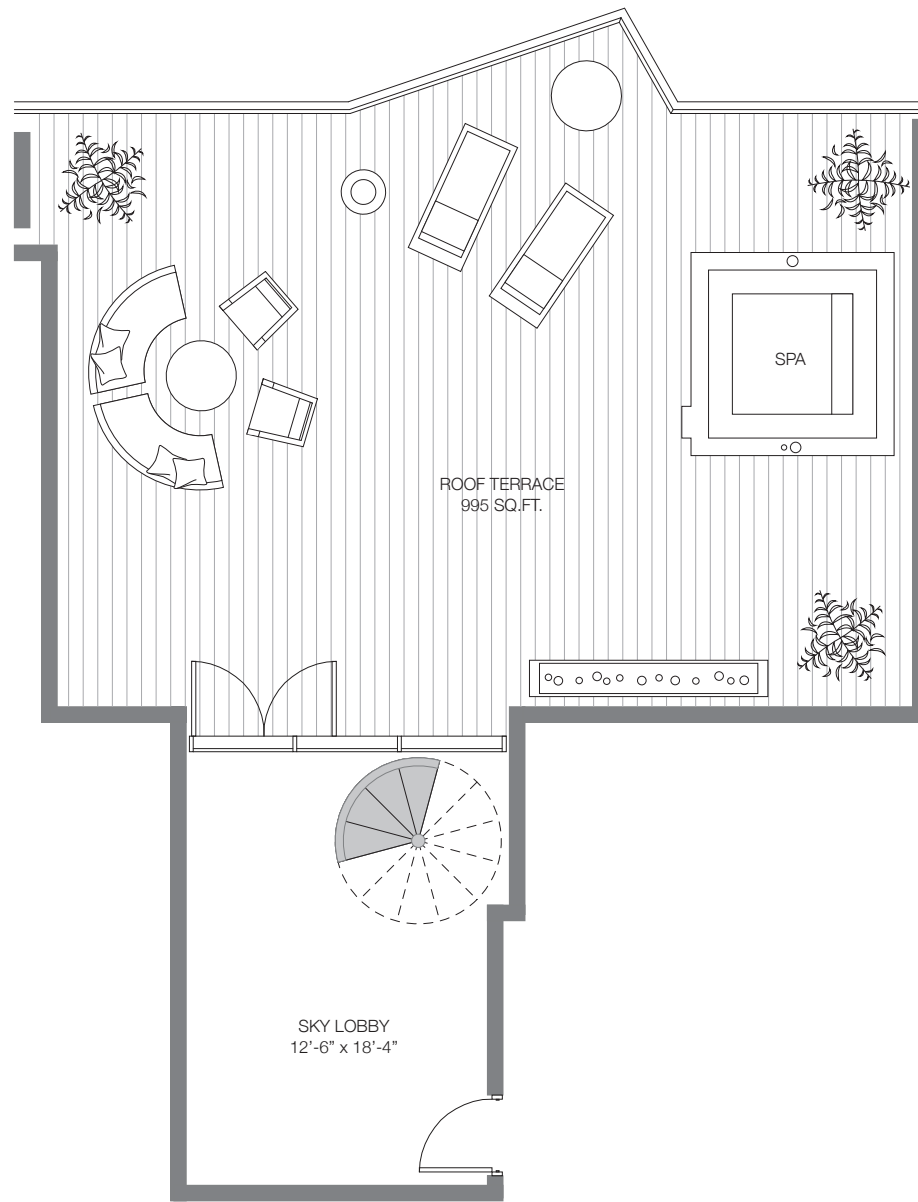
## SLS UPH-6

2 BEDROOMS / 2 ½ BATHS

A/C INTERIOR AREA	1,115 SQ. FT.	103.58 SQ. M.
TERRACE	212 SQ. FT.	19.69 SQ. M.
<b>TOTAL RESIDENCE</b>	<b>1,327 SQ. FT.</b>	<b>123.28 SQ. M.</b>

Stated dimensions are measured to the exterior boundaries of the exterior walls and the centerline of interior demising walls and in fact vary from the dimensions that would be determined by using the description and definition of the "Unit" set forth in the Declaration (which generally only includes the interior airspace between the perimeter walls and excludes interior structural components). For your reference, the area of the Unit, determined in accordance with those defined unit boundaries, is + or - 1,012 sq. ft. for units 06. Note that measurements of rooms set forth on this floor plan are generally taken at the greatest points of each given room (as if the room were a perfect rectangle), without regard for any cutouts. Accordingly, the area of the actual room will typically be smaller than the product obtained by multiplying the stated length times width. All dimensions are approximate and may vary with actual construction, and all floor plans and development plans are subject to change.





## SLS UPH-7

3 BEDROOMS / 2 1/2 BATHS

A/C INTERIOR AREA	2,134 SQ. FT.	198.25 SQ. M.
TERRACES	1,556 SQ. FT.	144.55 SQ. M.
<b>TOTAL RESIDENCE</b>	<b>3,690 SQ. FT.</b>	<b>342.80 SQ. M.</b>

Stated dimensions are measured to the exterior boundaries of the exterior walls and the centerline of interior demising walls and in fact vary from the dimensions that would be determined by using the description and definition of the "Unit" set forth in the Declaration (which generally only includes the interior airspace between the perimeter walls and excludes interior structural components). For your reference, the area of the Unit, determined in accordance with those defined unit boundaries, is + or - 1,963 sq. ft. for units 07. Note that measurements of rooms set forth on this floor plan are generally taken at the greatest points of each given room (as if the room were a perfect rectangle), without regard for any cutouts. Accordingly, the area of the actual room will typically be smaller than the product obtained by multiplying the stated length times width. All dimensions are approximate and may vary with actual construction, and all floor plans and development plans are subject to change.

