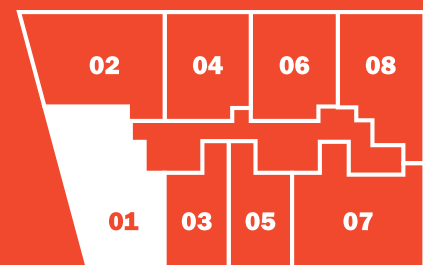


01



2 Bedrooms + 2 Bathrooms + Den

AC: 1,220 SQ F | Balcony: 86 SQ F

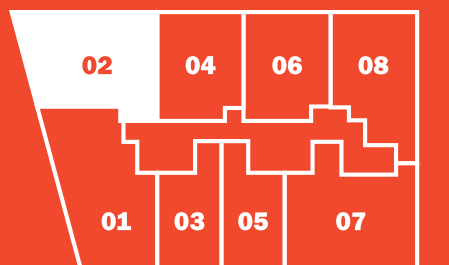
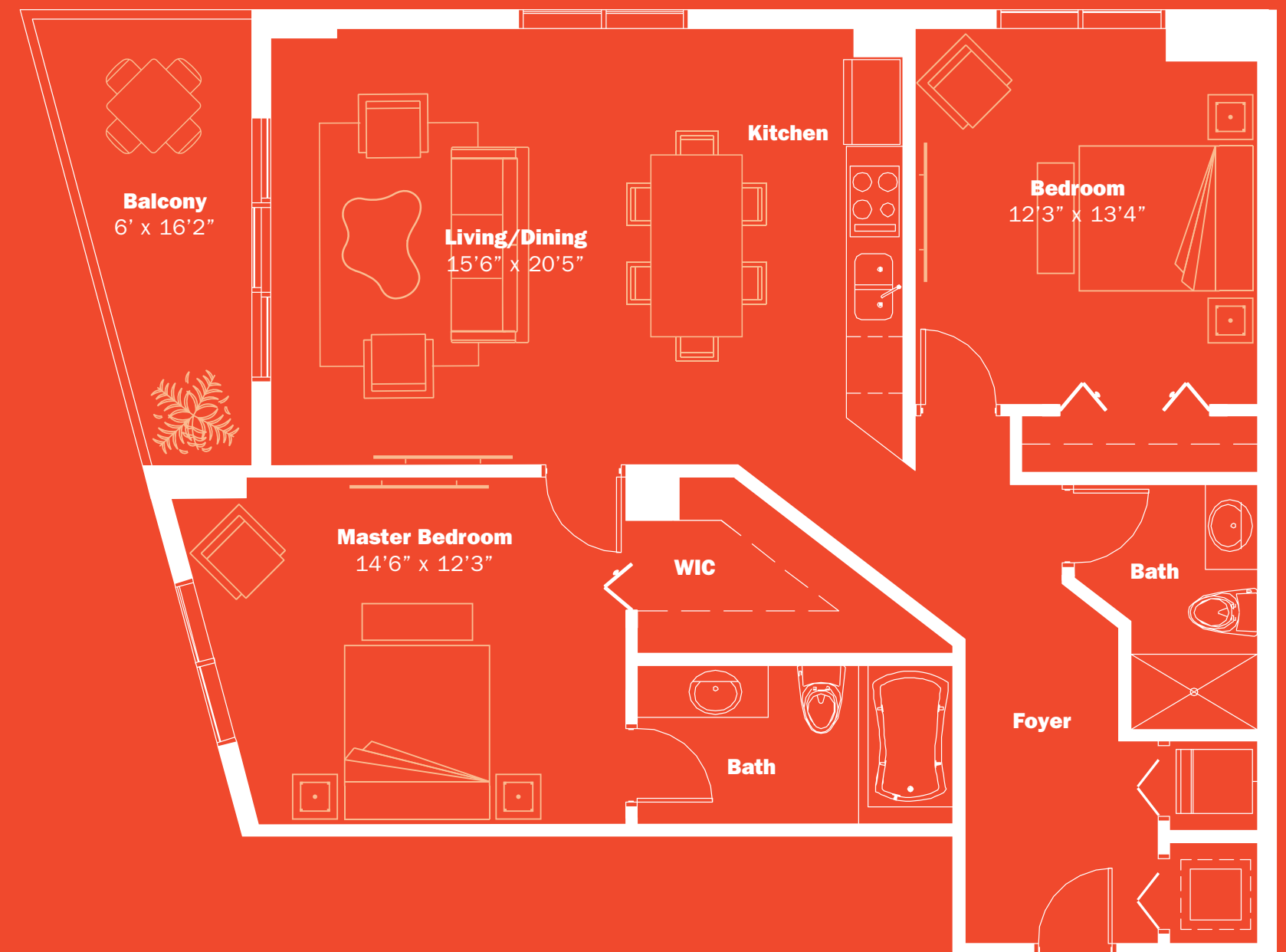
TOTAL SQ F*: 1,306 | TOTAL M²*: 121.33

* TERRACE INCLUDED

Stated dimensions are measured to the exterior boundaries of the exterior walls and the centerline of interior demising walls and in fact vary from the dimensions that would be determined by using the description and definition of the "Unit" set forth in the Declaration (which generally only includes the interior airspace between the perimeter walls and excludes interior structural components). For your reference, the area of the Unit, determined in accordance with those defined unit boundaries, is + or - 1,140 sq ft. Note that measurements of rooms set forth on this floor plan are generally taken at the greatest points of each given room (as if the room were a perfect rectangle), without regard for any cutouts. Accordingly, the area of the actual room will typically be smaller than the product obtained by multiplying the stated length times width. All dimensions are approximate and may vary with actual construction, and all floor plans and development plans are subject to change.

See Legal Disclaimers on page 40.

02



2 Bedrooms + 2 Bathrooms

AC: 1,135 SQ F | Balcony: 100 SQ F

TOTAL SQ F*: 1,235 | TOTAL M²*: 114.73

* TERRACE INCLUDED

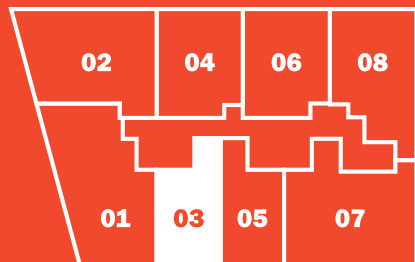
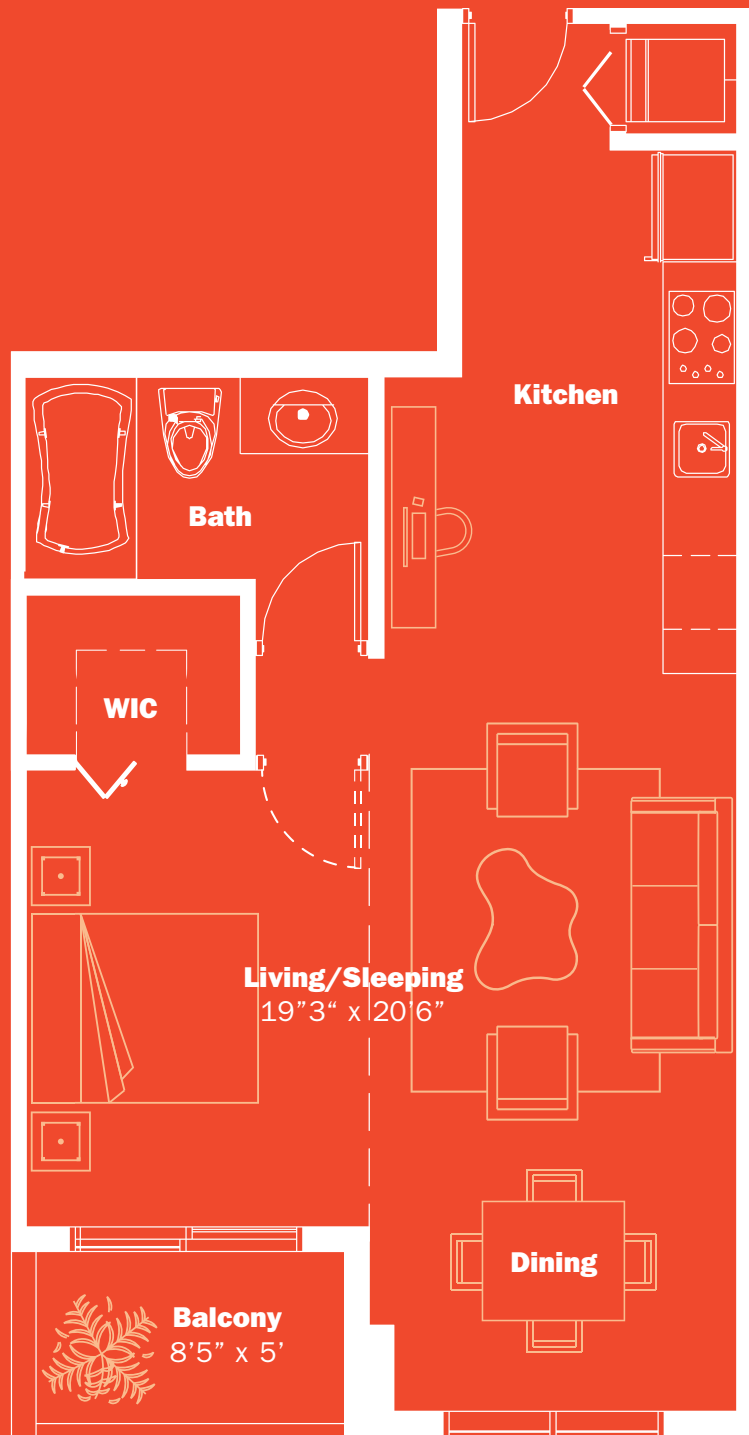
Stated dimensions are measured to the exterior boundaries of the exterior walls and the centerline of interior demising walls and in fact vary from the dimensions that would be determined by using the description and definition of the "Unit" set forth in the Declaration (which generally only includes the interior airspace between the perimeter walls and excludes interior structural components). For your reference, the area of the Unit, determined in accordance with those defined unit boundaries, is + or - 1,045 sq ft. Note that measurements of rooms set forth on this floor plan are generally taken at the greatest points of each given room (as if the room were a perfect rectangle), without regard for any cutouts. Accordingly, the area of the actual room will typically be smaller than the product obtained by multiplying the stated length times width. All dimensions are approximate and may vary with actual construction, and all floor plans and development plans are subject to change.

See Legal Disclaimers on page 40.

03

05

as shown but reversed



Studio + 1 Bathroom

AC: 600 SQ F | Balcony: 42 SQ F

T SQ F*: 642 | T M²*: 59.64

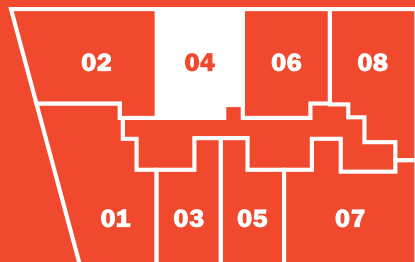
* TERRACE INCLUDED

Stated dimensions are measured to the exterior boundaries of the exterior walls and the centerline of interior demising walls and in fact vary from the dimensions that would be determined by using the description and definition of the "Unit" set forth in the Declaration (which generally only includes the interior airspace between the perimeter walls and excludes interior structural components). For your reference, the area of the Unit, determined in accordance with those defined unit boundaries, is ~ or ~ 569 sq ft. for units 03 & 05. Note that measurements of rooms set forth on this floor plan are generally taken at the greatest points of each given room (as if the room were a perfect rectangle), without regard for any cutouts. Accordingly, the area of the actual room will typically be smaller than the product obtained by multiplying the stated length times width. All dimensions are approximate and may vary with actual construction, and all floor plans and development plans are subject to change.

See Legal Disclaimers on page 40.

04

06



1 Bedroom + 1 1/2 Bath + Den

AC: 790 SQ F | Balcony: 62 SQ F

TOTAL SQ F*: 852 | T M²*: 79.15

* TERRACE INCLUDED

Stated dimensions are measured to the exterior boundaries of the exterior walls and the centerline of interior demising walls and in fact vary from the dimensions that would be determined by using the description and definition of the "Unit" set forth in the Declaration (which generally only includes the interior airspace between the perimeter walls and excludes interior structural components). For your reference, the area of the Unit, determined in accordance with those defined unit boundaries, is ~ or ~ 739 sq ft. for units 04 & 06. Note that measurements of rooms set forth on this floor plan are generally taken at the greatest points of each given room (as if the room were a perfect rectangle), without regard for any cutouts. Accordingly, the area of the actual room will typically be smaller than the product obtained by multiplying the stated length times width. All dimensions are approximate and may vary with actual construction, and all floor plans and development plans are subject to change.

See Legal Disclaimers on page 40.

07

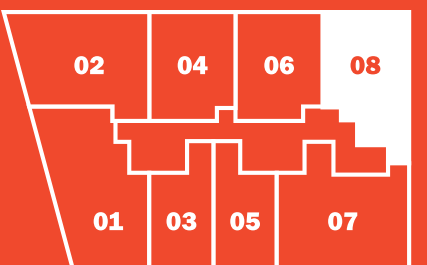


2 Bedrooms + 2 Bathrooms + Den
AC 1,195 SQ F | Balcony: 70 SQ F
TOTAL SQ F*: 1,265 | TOTAL M²*: 117.52
* TERRACE INCLUDED

Stated dimensions are measured to the exterior boundaries of the exterior walls and the centerline of interior demising walls and in fact vary from the dimensions that would be determined by using the description and definition of the "Unit" set forth in the Declaration (which generally only includes the interior airspace between the perimeter walls and excludes interior structural components). For your reference, the area of the Unit, determined in accordance with those defined unit boundaries, is + or - 1,115 sq ft. Note that measurements of rooms set forth on this floor plan are generally taken at the greatest points of each given room (as if the room were a perfect rectangle), without regard for any cutouts. Accordingly, the area of the actual room will typically be smaller than the product obtained by multiplying the stated length times width. All dimensions are approximate and may vary with actual construction, and all floor plans and development plans are subject to change.

See Legal Disclaimers on page 40.

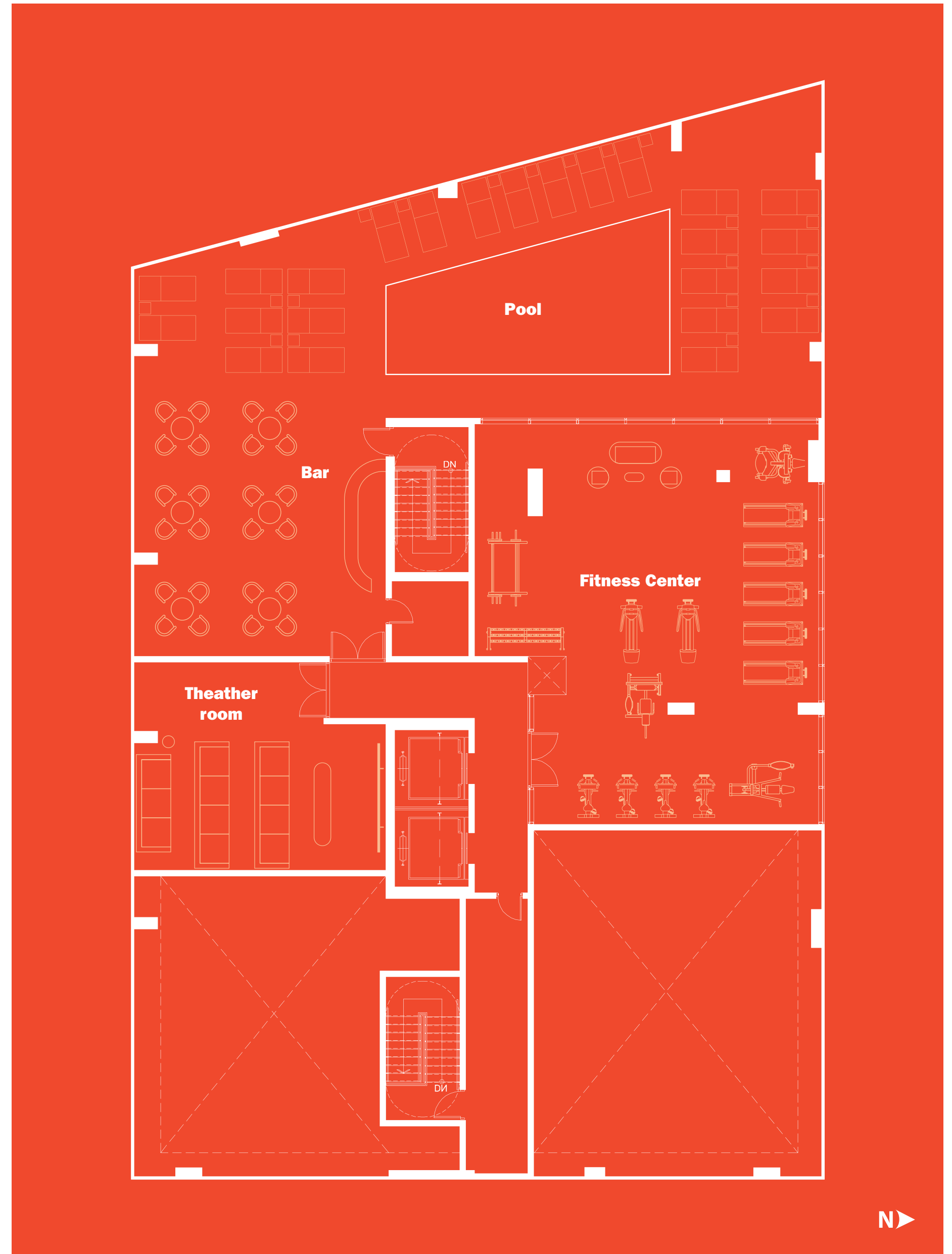
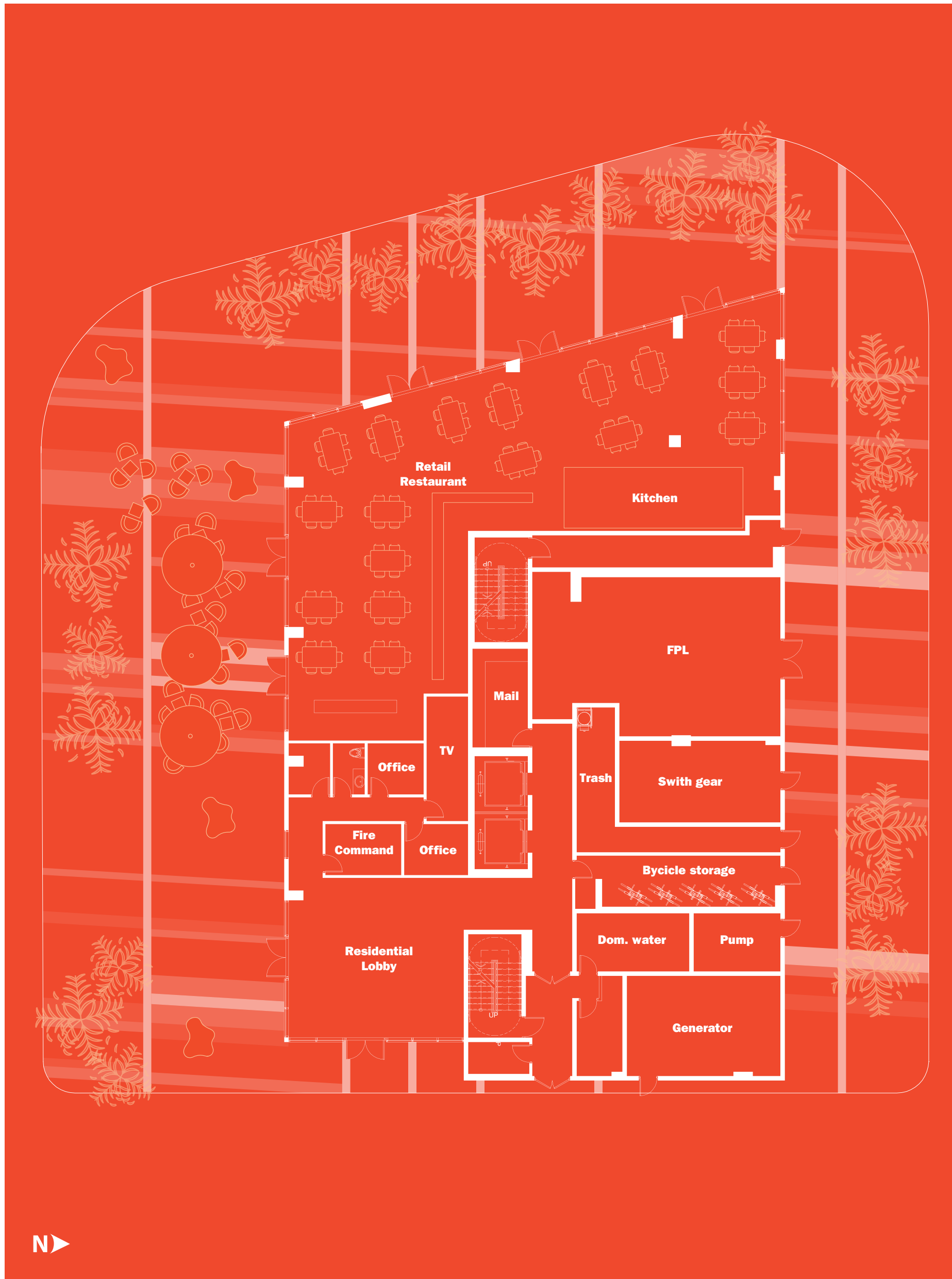
08



2 Bedrooms + 2 Bathrooms
AC 955 SQ F | Balcony: 67 SQ F
TOTAL SQ F*: 1,022 | TOTAL M²*: 94.94
* TERRACE INCLUDED

Stated dimensions are measured to the exterior boundaries of the exterior walls and the centerline of interior demising walls and in fact vary from the dimensions that would be determined by using the description and definition of the "Unit" set forth in the Declaration (which generally only includes the interior airspace between the perimeter walls and excludes interior structural components). For your reference, the area of the Unit, determined in accordance with those defined unit boundaries, is + or - 970 sq ft. Note that measurements of rooms set forth on this floor plan are generally taken at the greatest points of each given room (as if the room were a perfect rectangle), without regard for any cutouts. Accordingly, the area of the actual room will typically be smaller than the product obtained by multiplying the stated length times width. All dimensions are approximate and may vary with actual construction, and all floor plans and development plans are subject to change.

See Legal Disclaimers on page 40.



Personal freedom
and creative activity
reaches new levels
here, starting at the
ground floor and
working its way upward.

myplaza

Lofty in its range of amenities, but grounded by real-life pursuits, your connection with mybrickell will begin the moment you walk in the door.

Dine and shop just downstairs from your residence. Take a leisurely bike ride around the city or on nearby Key Biscayne thanks to a convenient bicycle garage for residents only. Meet friends and visitors in the stunning triple-height lobby before heading out to enjoy the neighborhood around you. This is the epicenter of life in the city.

See Legal Disclaimers on page 40.

mysky

Mybrickell takes the idea of “live, work, play” to a higher level with an elevated, rooftop getaway for residents. Get in a solid workout before or after work. Host happy hour at your own exclusive bar and lounge. Watch thrilling sporting events or popular movies in the comfort of your plush theater room equipped with DVD equipment and expanded cable programming. If you can dream it, we’ve given you a place to do it.

See Legal Disclaimers on page 40.