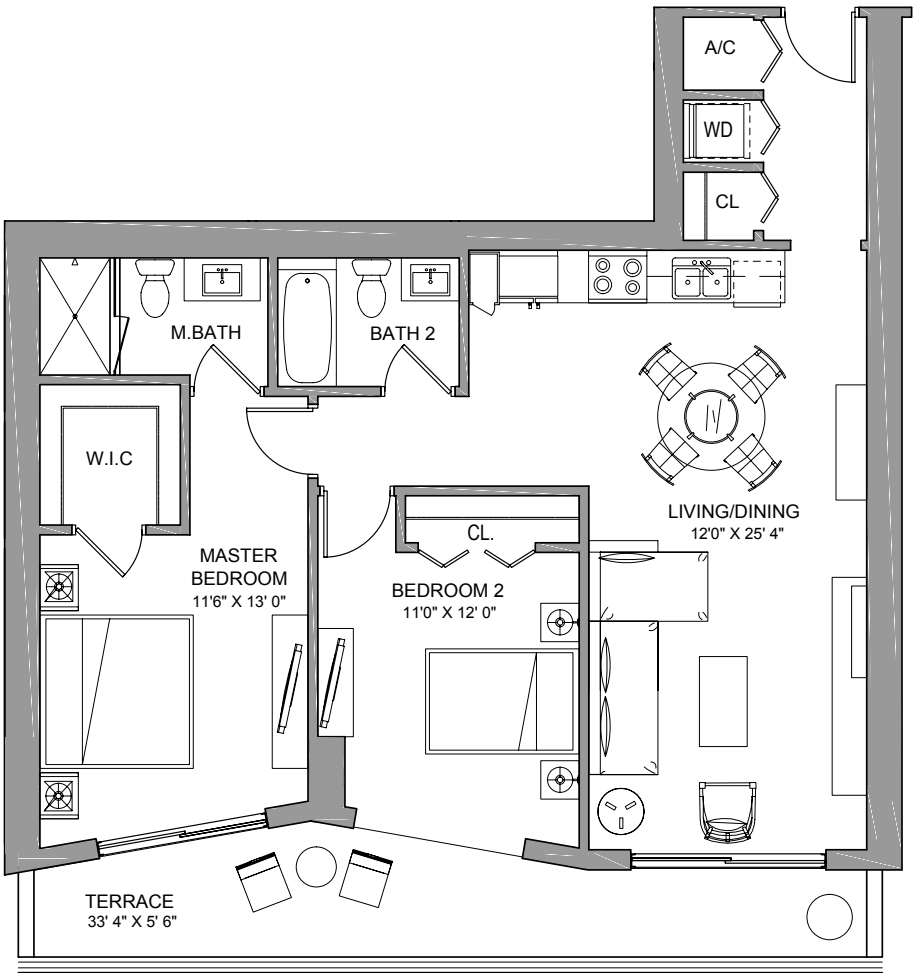
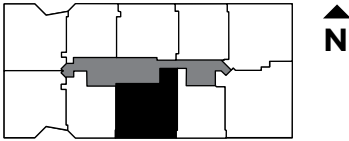



# BRICKELLTEN

## RESIDENCE ONE 2 BEDROOMS / 2 BATH

INTERIOR..... 1,064 sq ft 99 m<sup>2</sup>  
 TERRACE..... 186 sq ft 17 m<sup>2</sup>

**TOTAL 1,250 sq ft 116 m<sup>2</sup>**



 These drawings are conceptual only and are for the convenience of reference. They should not be relied upon as representations, express or implied, of the final detail of the residences. Units shown are examples of the types of units that may be constructed in this project. Stated square footages are ranges for a particular unit type and are measured to the exterior boundaries of the exterior walls and the centerline of interior demising walls. The area that would be determined by using the description and definition of the "Unit" set forth in the Declaration (which generally only includes the interior airspace between the perimeter walls and excludes interior structural components).

# BRICKELLTEN

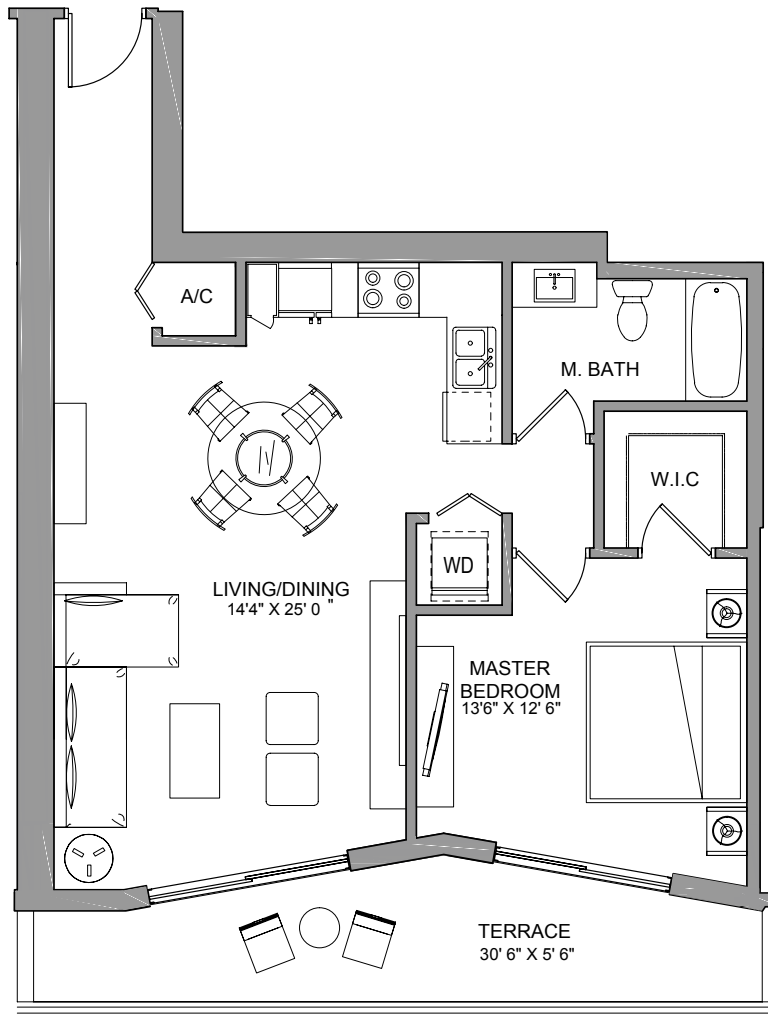
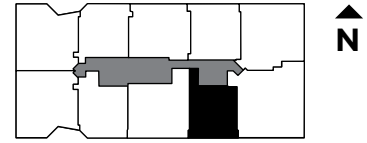
## RESIDENCE TWO

1 BEDROOM / 1 BATH

INTERIOR.....	815 sq ft	76 m <sup>2</sup>
TERRACE.....	165 sq ft	15 m <sup>2</sup>

---

<b>TOTAL</b>	<b>980 sq ft</b>	<b>91 m<sup>2</sup></b>
--------------	------------------	-------------------------



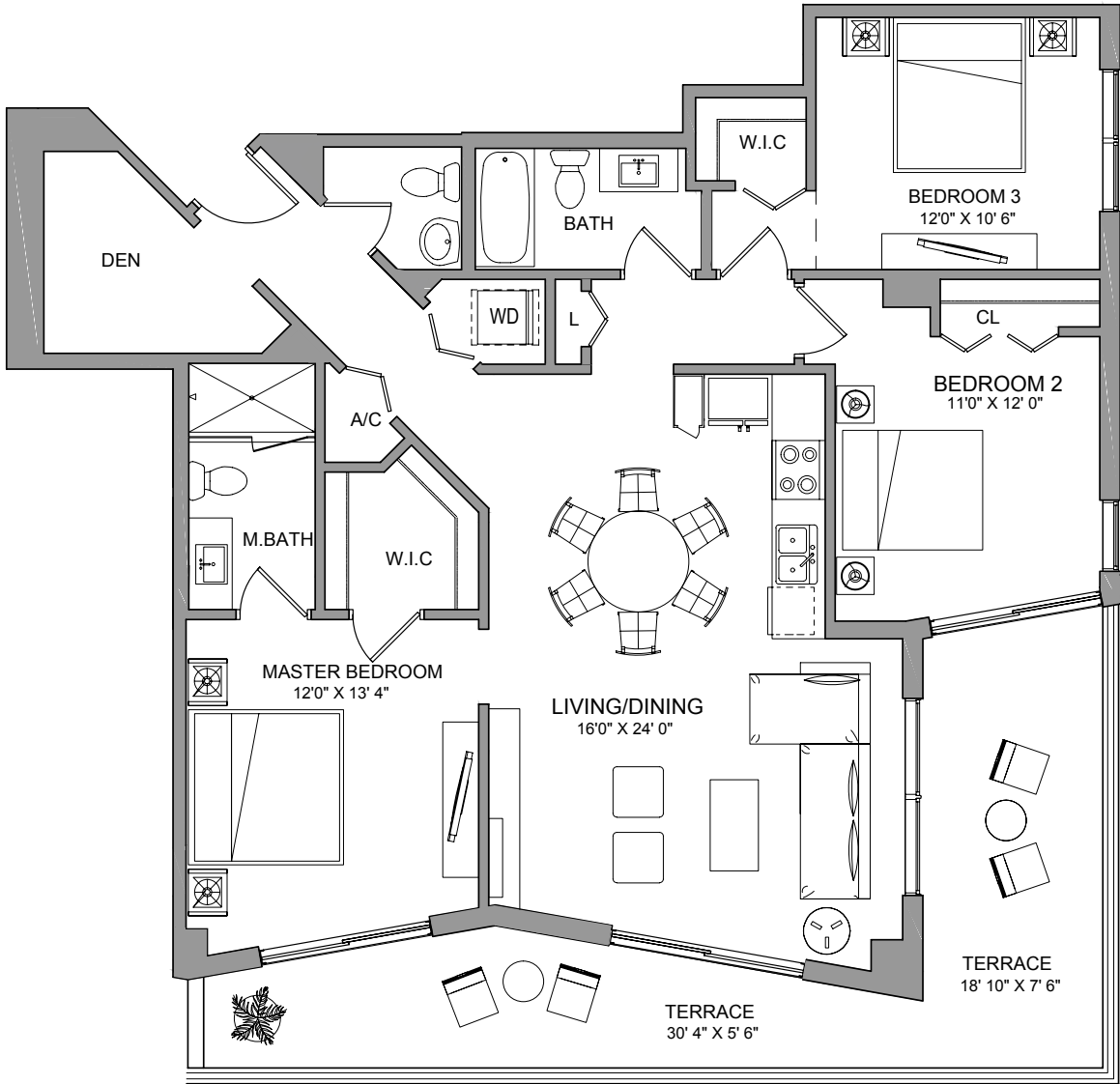
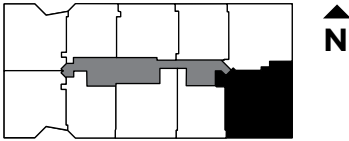
# BRICKELLTEN


## RESIDENCE THREE

3 BEDROOMS + DEN / 2 1/2 BATH

INTERIOR.....	1,387 sq ft	129 m <sup>2</sup>
TERRACE.....	328 sq ft	31 m <sup>2</sup>

**TOTAL** **1,715 sq ft** **160 m<sup>2</sup>**



 These drawings are conceptual only and are for the convenience of reference. They should not be relied upon as representations, express or implied, of the final detail of the residences. Units shown are examples of the types of units that are available in this project. Stated square footages are ranges for a particular unit type and are measured to the exterior boundaries of the exterior walls and the centerline of interior demising walls. Actual square footages may vary. The area that would be determined by using the description and definition of the "Unit" set forth in the Declaration (which generally only includes the interior airspace between the perimeter walls and excludes interior structural components).

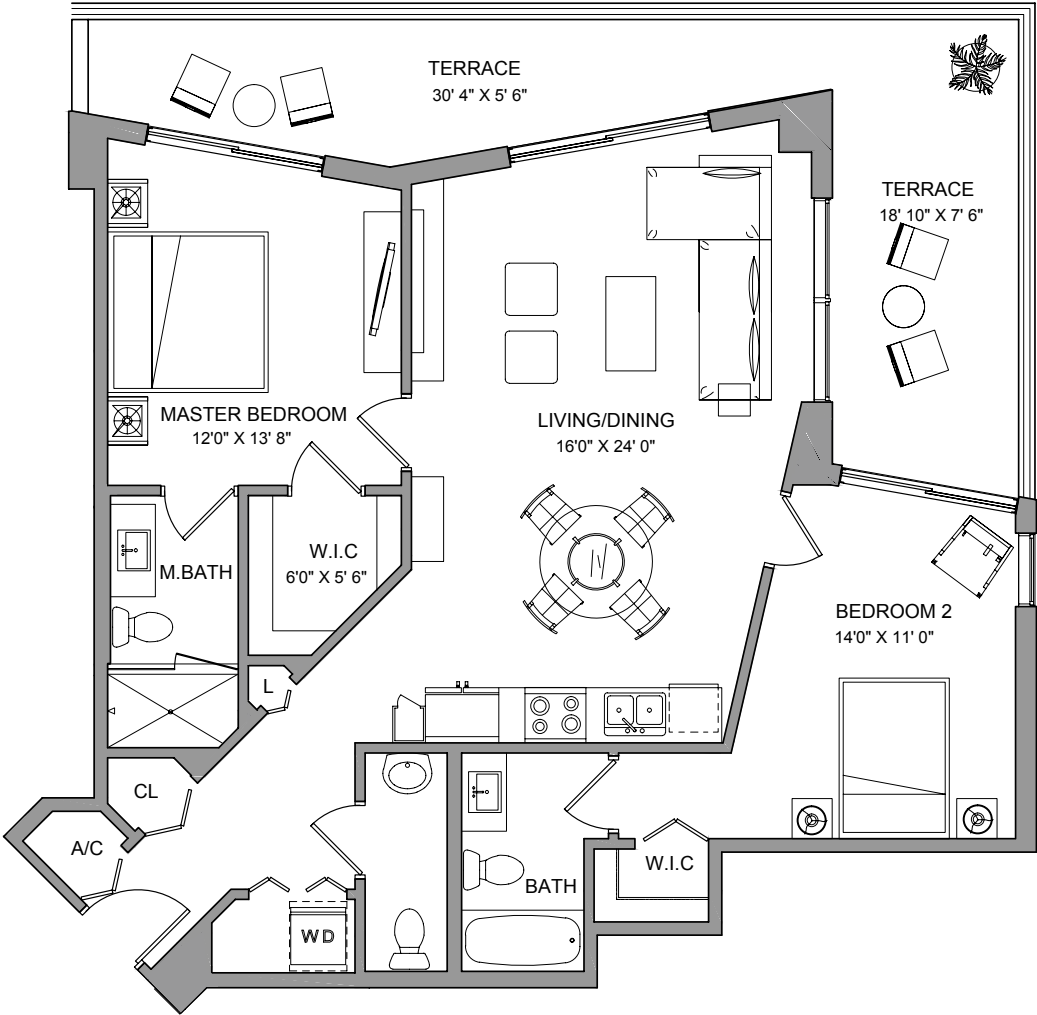
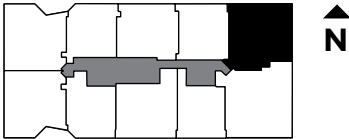
# BRICKELLTEN


## RESIDENCE FOUR

2 BEDROOMS / 2 1/2 BATH

INTERIOR.....	1,124 sq ft	105 m <sup>2</sup>
TERRACE.....	328 sq ft	31 m <sup>2</sup>

**TOTAL** **1,452 sq ft** **136 m<sup>2</sup>**

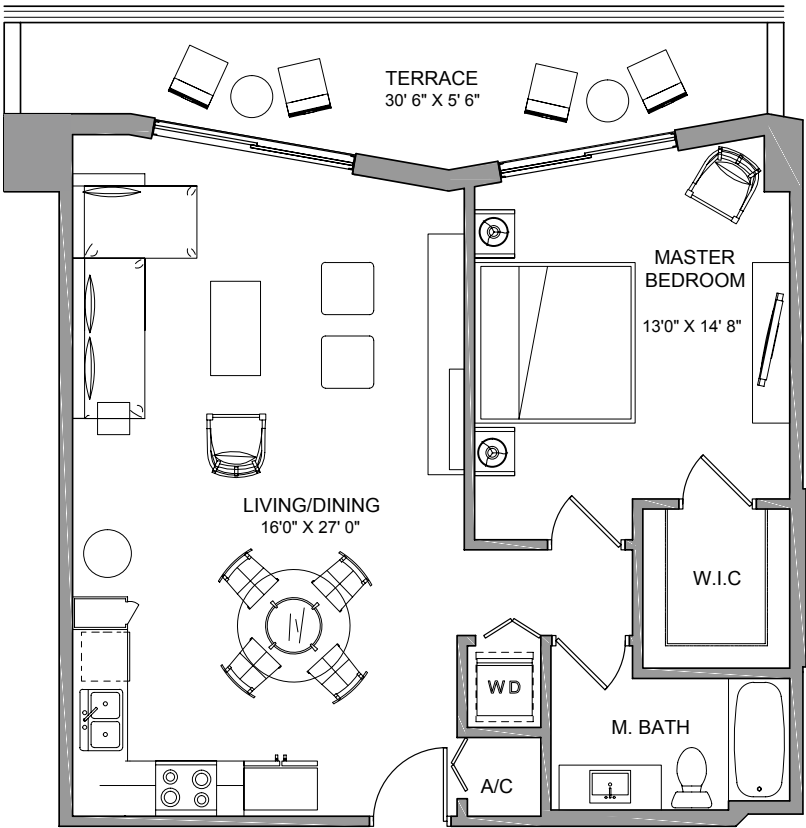
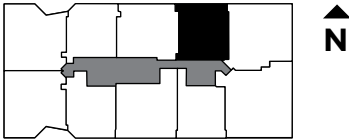



 These drawings are conceptual only and are for the convenience of reference. They should not be relied upon as representations, express or implied, of the final detail of the residences. Units shown are examples of the types of units that will be offered in this project. Stated square footages are ranges for a particular unit type and are measured to the exterior boundaries of the exterior walls and the centerline of interior demising walls. The area that would be determined by using the description and definition of the "Unit" set forth in the Declaration (which generally only includes the interior airspace between the perimeter walls and excludes interior structural components).

# BRICKELLTEN

## RESIDENCE FIVE 1 BEDROOM / 1 BATH

INTERIOR.....	827 sq ft	77 m <sup>2</sup>
TERRACE.....	169 sq ft	16 m <sup>2</sup>
<b>TOTAL</b>	<b>996 sq ft</b>	<b>93 m<sup>2</sup></b>




 These drawings are conceptual only and are for the convenience of reference. They should not be relied upon as representations, express or implied, of the final detail of the residences. Units shown are examples of actual units. Stated square footages are ranges for a particular unit type and are measured to the exterior boundaries of the exterior walls and the centerline of interior demising walls. The area that would be determined by using the description and definition of the "Unit" set forth in the Declaration (which generally only includes the interior airspace between the perimeter walls and excludes interior structural components).

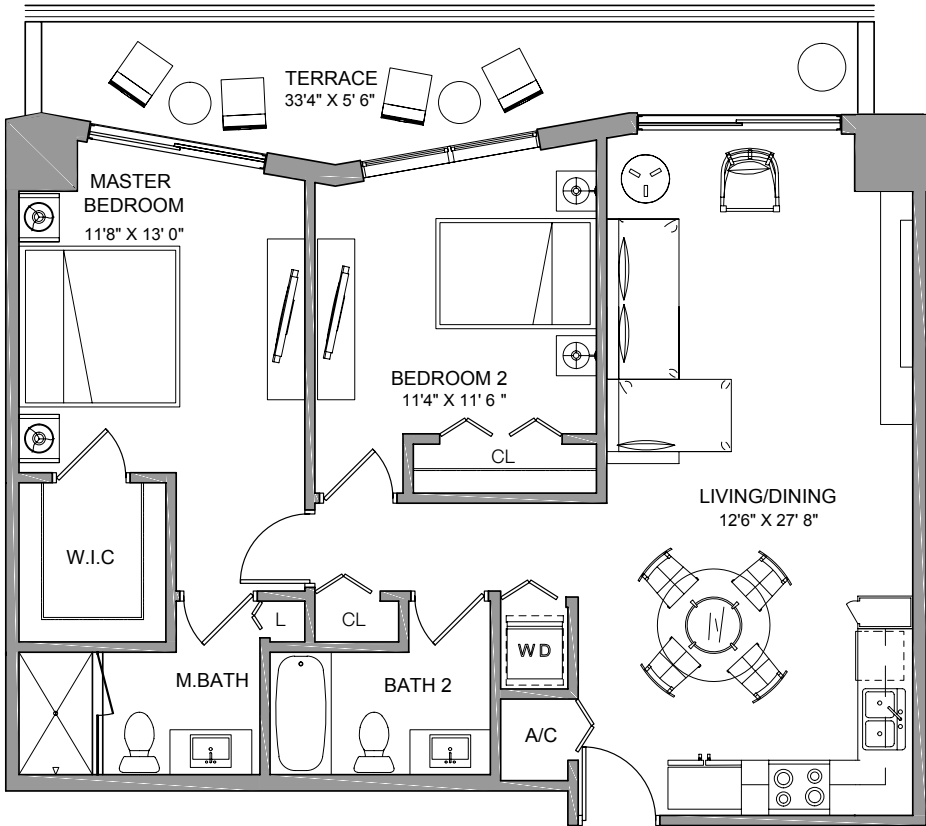
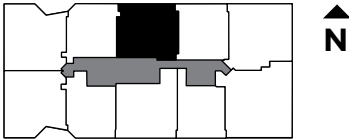
# BRICKELLTEN

## RESIDENCE SIX

2 BEDROOMS / 2 BATH

INTERIOR..... 1,009 sq ft 94 m<sup>2</sup>  
 TERRACE..... 177 sq ft 16 m<sup>2</sup>

**TOTAL 1,186 sq ft 110 m<sup>2</sup>**



These drawings are conceptual only and are for the convenience of reference. They should not be relied upon as representations, express or implied, of the final detail of the residences. Units shown are examples of the actual units. Stated square footages are ranges for a particular unit type and are measured to the exterior boundaries of the exterior walls and the centerline of interior demising walls. The area that would be determined by using the description and definition of the "Unit" set forth in the Declaration (which generally only includes the interior airspace between the perimeter walls and excludes interior structural components).



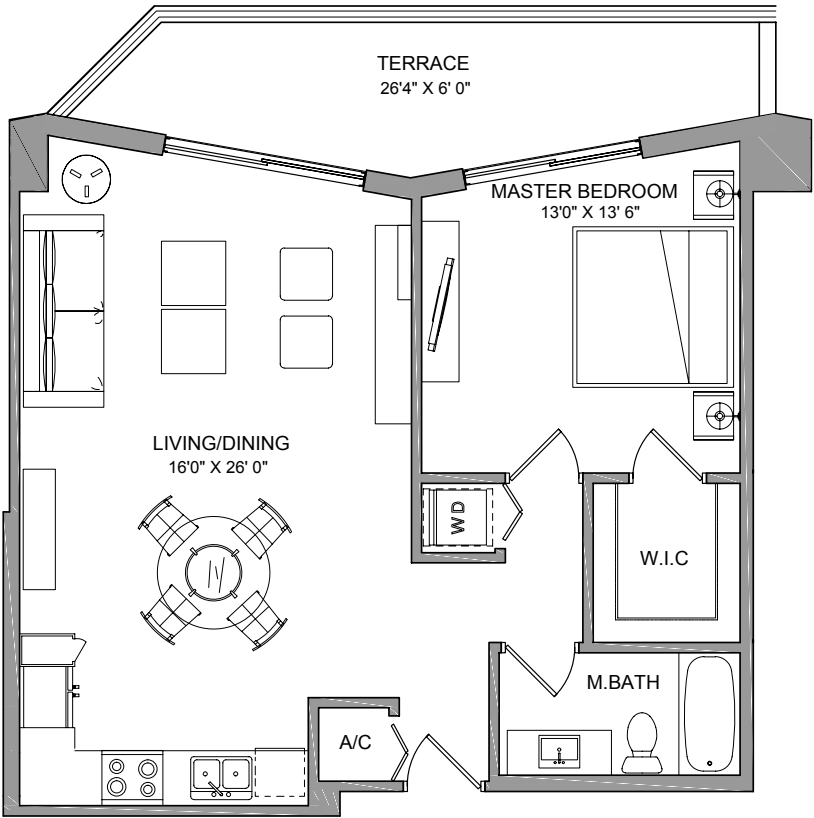
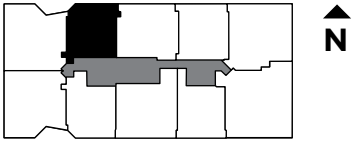
# BRICKELLTEN

## RESIDENCE SEVEN

1 BEDROOM / 1 BATH

INTERIOR..... 792 sq ft 74 m<sup>2</sup>  
 TERRACE..... 167 sq ft 16 m<sup>2</sup>

**TOTAL 959 sq ft 90 m<sup>2</sup>**



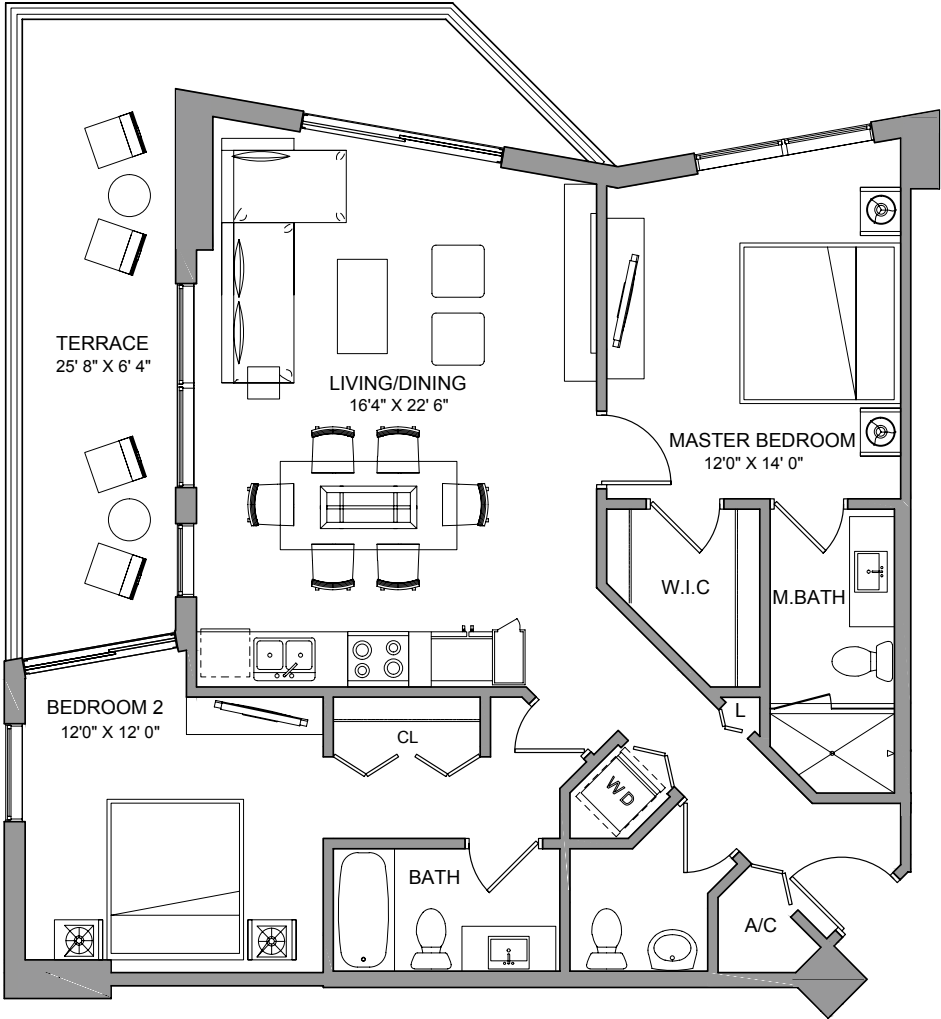
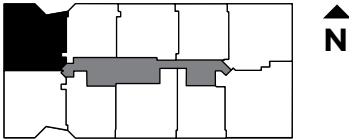
# BRICKELL TEN

## RESIDENCE EIGHT

2 BEDROOMS / 2 1/2 BATH

INTERIOR..... 1,111 sq ft 103 m<sup>2</sup>  
 TERRACE..... 254 sq ft 24 m<sup>2</sup>

**TOTAL 1,365 sq ft 127 m<sup>2</sup>**



These drawings are conceptual only and are for the convenience of reference. They should not be relied upon as representations, express or implied, of the final detail of the residences. Units shown are examples of the actual units. Stated square footages are ranges for a particular unit type and are measured to the exterior boundaries of the exterior walls and the centerline of interior demising walls. The area that would be determined by using the description and definition of the "Unit" set forth in the Declaration (which generally only includes the interior airspace between the perimeter walls and excludes interior structural components).





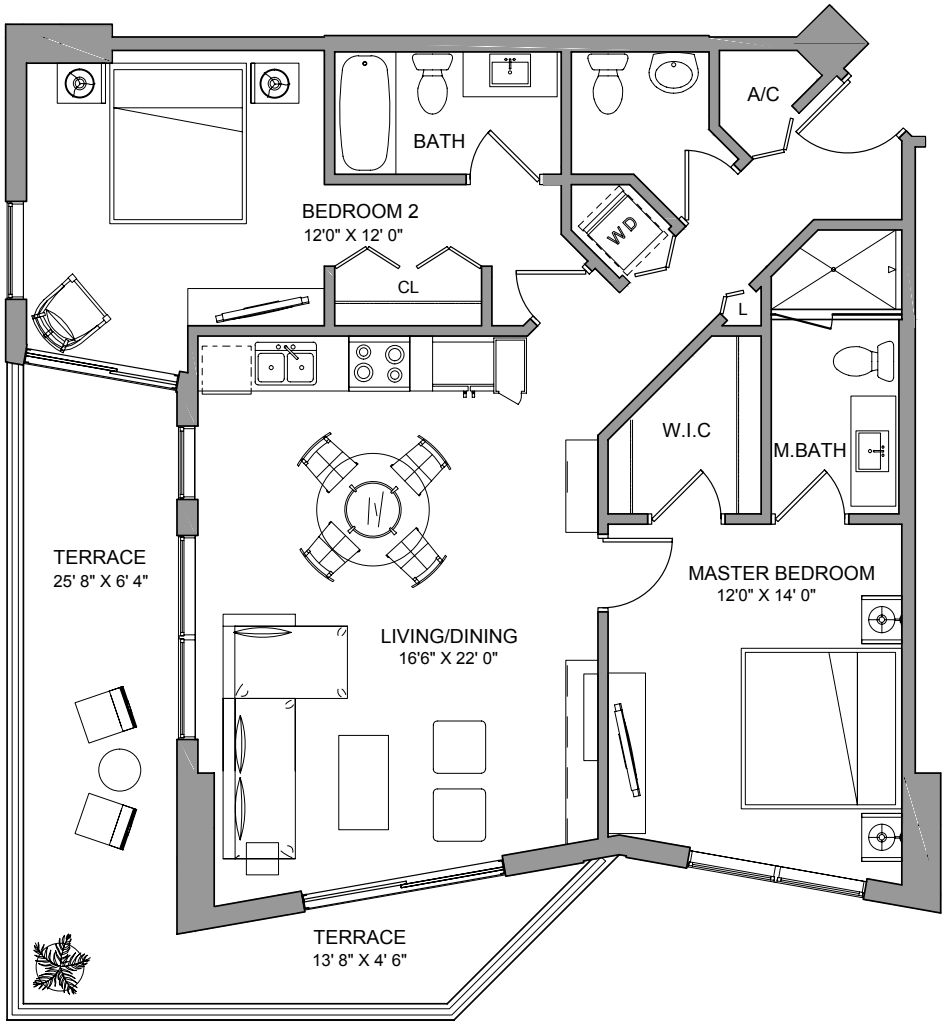
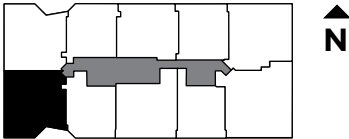
# BRICKELLTEN

## RESIDENCE NINE

2 BEDROOMS / 2 1/2 BATH

INTERIOR.....	1,116 sq ft	104 m <sup>2</sup>
TERRACE.....	254 sq ft	24 m <sup>2</sup>

**TOTAL** **1,370 sq ft** **128 m<sup>2</sup>**



These drawings are conceptual only and are for the convenience of reference. They should not be relied upon as representations, express or implied, of the final detail of the residences. Units shown are examples of the actual units. Stated square footages are ranges for a particular unit type and are measured to the exterior boundaries of the exterior walls and the centerline of interior demising walls. The area that would be determined by using the description and definition of the "Unit" set forth in the Declaration (which generally only includes the interior airspace between the perimeter walls and excludes interior structural components).



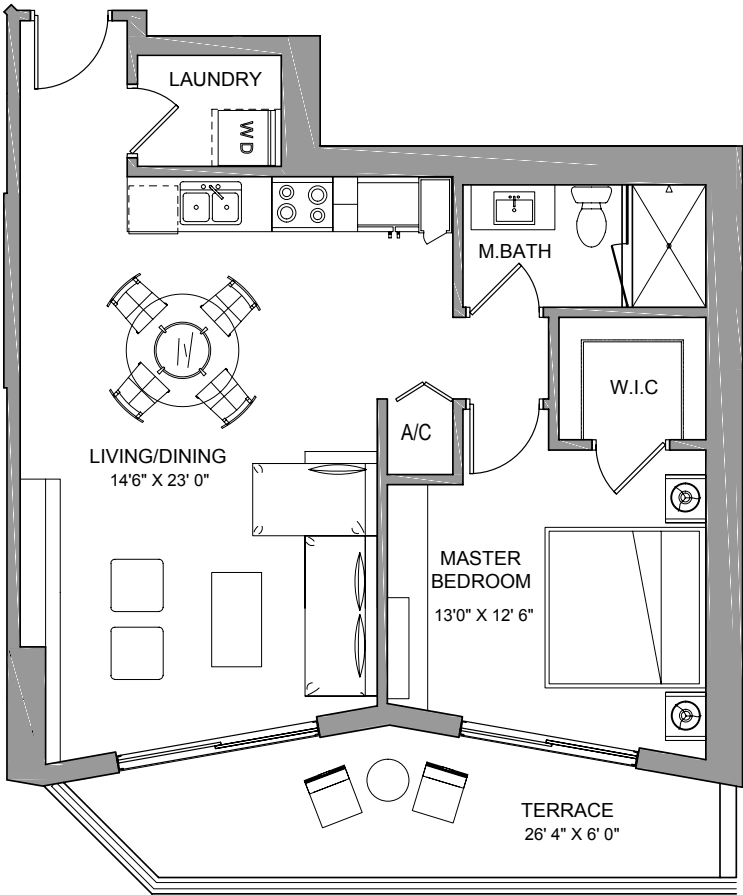
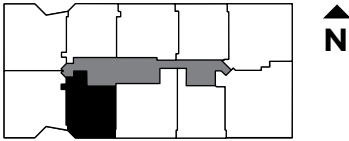
# BRICKELL TEN

## RESIDENCE TEN

1 BEDROOM / 1 BATH

INTERIOR..... 768 sq ft 71 m<sup>2</sup>  
 TERRACE..... 150 sq ft 14 m<sup>2</sup>

**TOTAL 918 sq ft 85 m<sup>2</sup>**



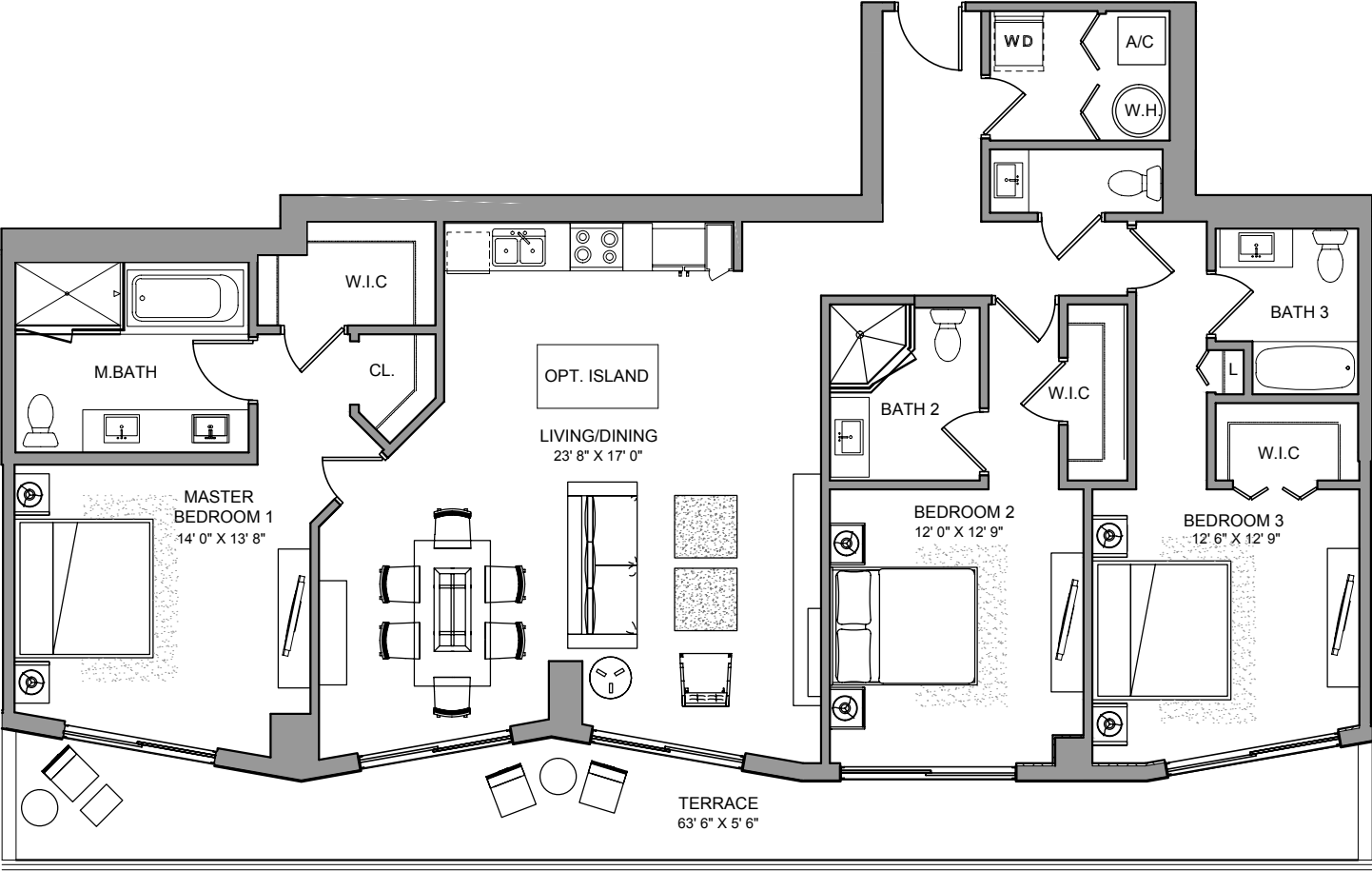
# BRICKELLTEN

## PH & LP ONE

3 BEDROOMS / 3 1/2 BATH

INTERIOR..... 1,812 sq ft 168 m<sup>2</sup>  
 TERRACE..... 337 sq ft 31 m<sup>2</sup>

**TOTAL 2,149 sq ft 199 m<sup>2</sup>**



These drawings are conceptual only and are for the convenience of reference. They should not be relied upon as representations, express or implied, of the final detail of the residences. Units shown are examples of the actual units. Stated square footages are ranges for a particular unit type and are measured to the exterior boundaries of the exterior walls and the centerline of interior demising walls. The area that would be determined by using the description and definition of the "Unit" set forth in the Declaration (which generally only includes the interior airspace between the perimeter walls and excludes interior structural components).



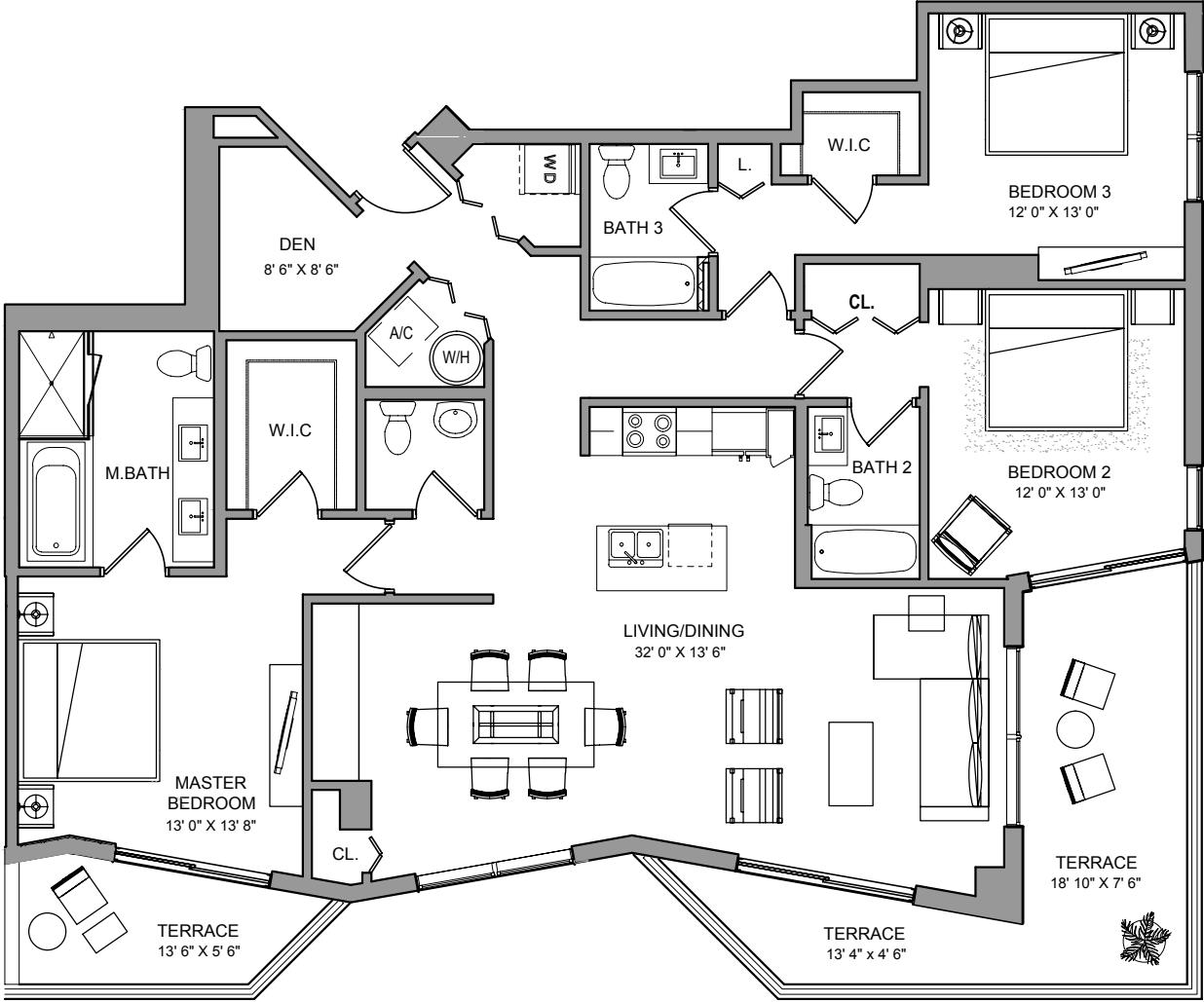
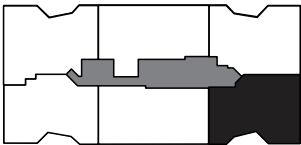
# BRICKELLTEN


## PH & LP TWO

3 BEDROOMS + DEN / 3 1/2 BATH

INTERIOR.....1,783 sq ft 166 m<sup>2</sup>  
 TERRACE..... 314 sq ft 29 m<sup>2</sup>

**TOTAL 2,097 sq ft 195 m<sup>2</sup>**



 These drawings are conceptual only and are for the convenience of reference. They should not be relied upon as representations, express or implied, of the final detail of the residences. Units shown are examples of the actual units. Stated square footages are ranges for a particular unit type and are measured to the exterior boundaries of the exterior walls and the centerline of interior demising walls and are not intended to represent the actual area that would be determined by using the description and definition of the "Unit" set forth in the Declaration (which generally only includes the interior airspace between the perimeter walls and excludes interior structural components).

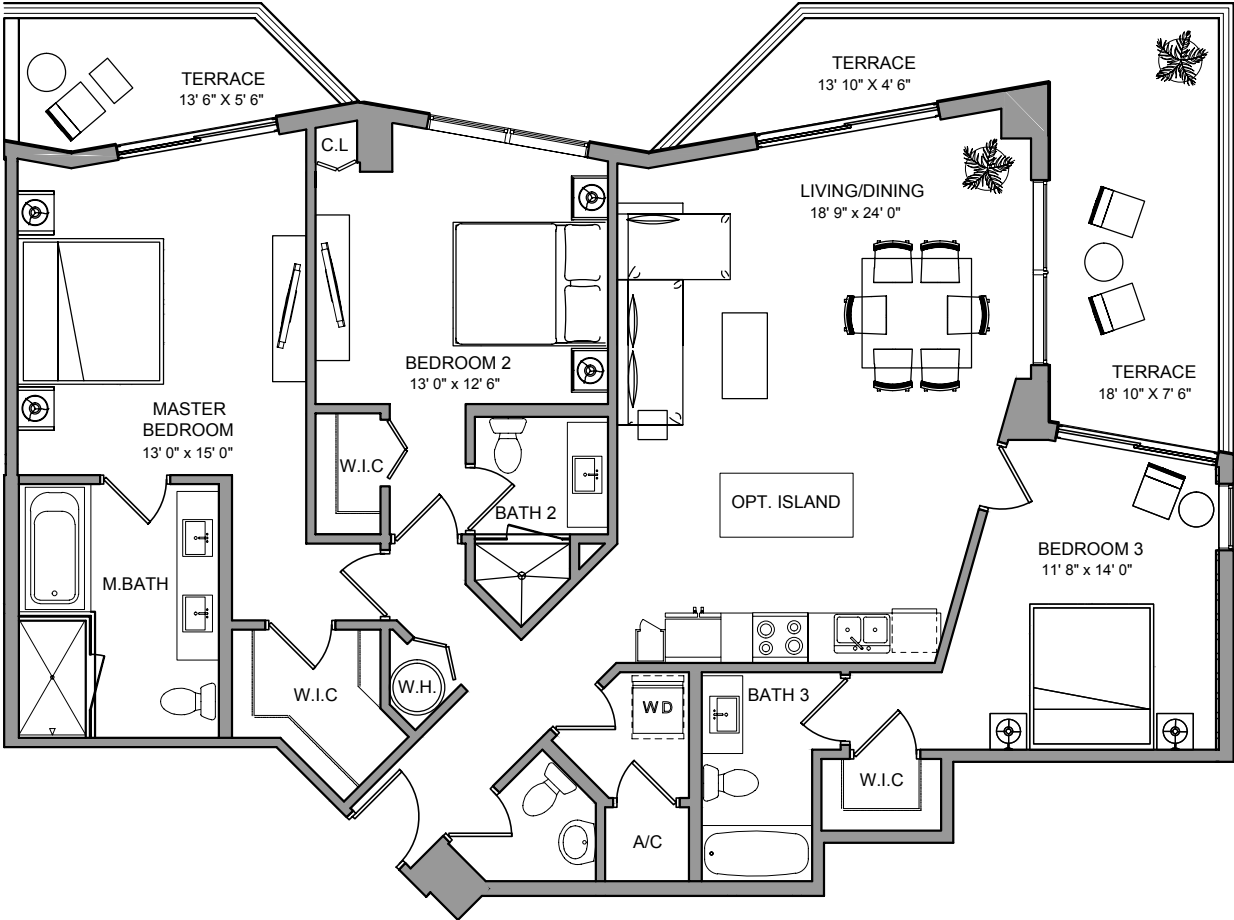
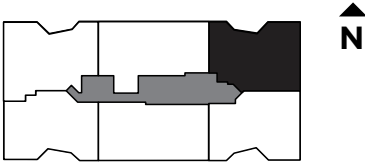
# BRICKELLTEN

## PH & LP THREE

3 BEDROOMS / 3 1/2 BATH

INTERIOR.....1,582 sq ft 147 m<sup>2</sup>  
 TERRACE..... 313 sq ft 29 m<sup>2</sup>

**TOTAL 1,895 sq ft 176 m<sup>2</sup>**



These drawings are conceptual only and are for the convenience of reference. They should not be relied upon as representations, express or implied, of the final detail of the residences. Units shown are examples of actual units. Stated square footages are ranges for a particular unit type and are measured to the exterior boundaries of the exterior walls and the centerline of interior demising walls. The area that would be determined by using the description and definition of the "Unit" set forth in the Declaration (which generally only includes the interior airspace between the perimeter walls and excludes interior structural components).



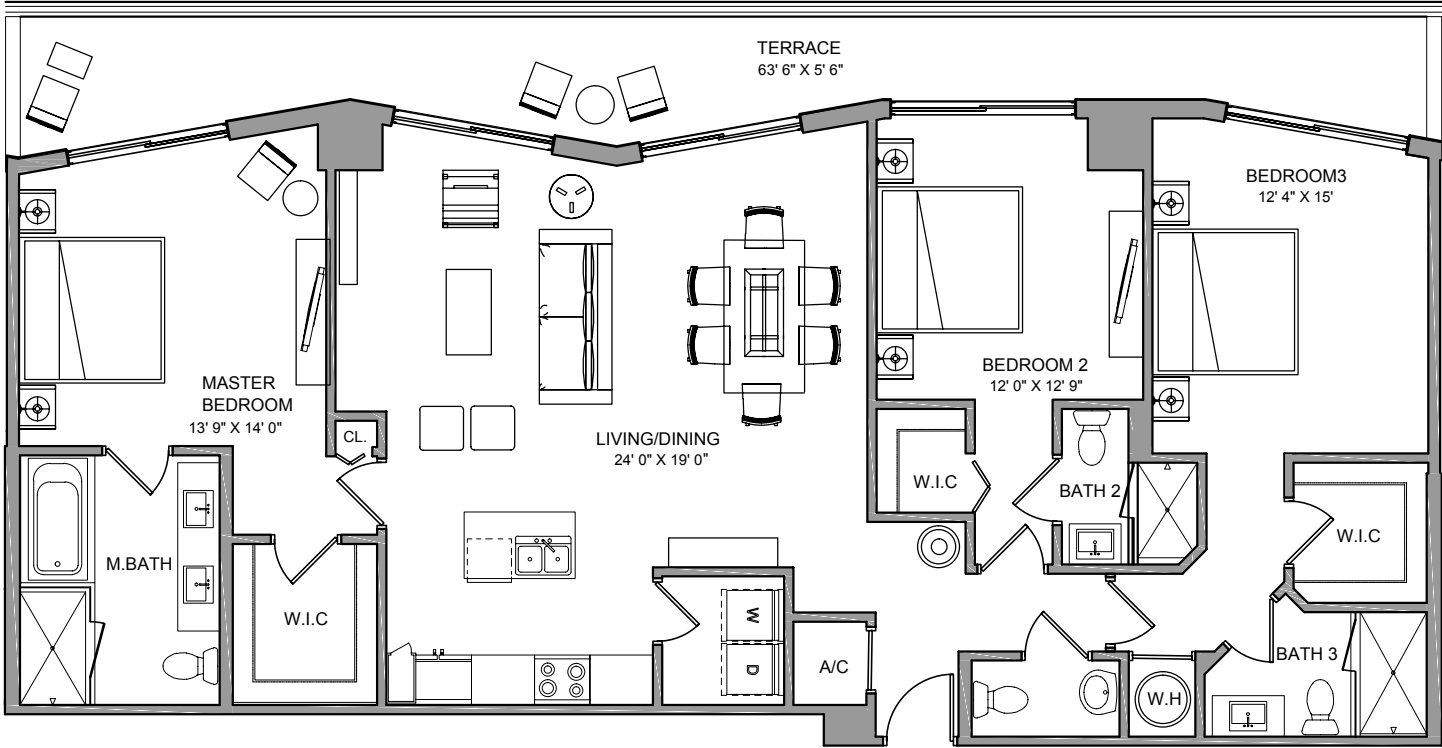
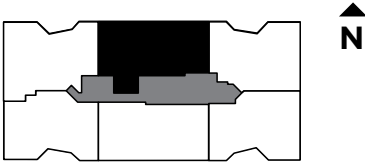
# BRICKELLTEN


## PH & LP FOUR

3 BEDROOMS / 3 1/2 BATH

INTERIOR.....	1,736 sq ft	161 m <sup>2</sup>
TERRACE.....	340 sq ft	32 m <sup>2</sup>

<b>TOTAL</b>	<b>2,076 sq ft</b>	<b>193 m<sup>2</sup></b>
--------------	--------------------	--------------------------



 These drawings are conceptual only and are for the convenience of reference. They should not be relied upon as representations, express or implied, of the final detail of the residences. Units shown are examples of the types of units that may be constructed in this project. Stated square footages are ranges for a particular unit type and are measured to the exterior boundaries of the exterior walls and the centerline of interior demising walls. The area that would be determined by using the description and definition of the "Unit" set forth in the Declaration (which generally only includes the interior airspace between the perimeter walls and excludes interior structural components).

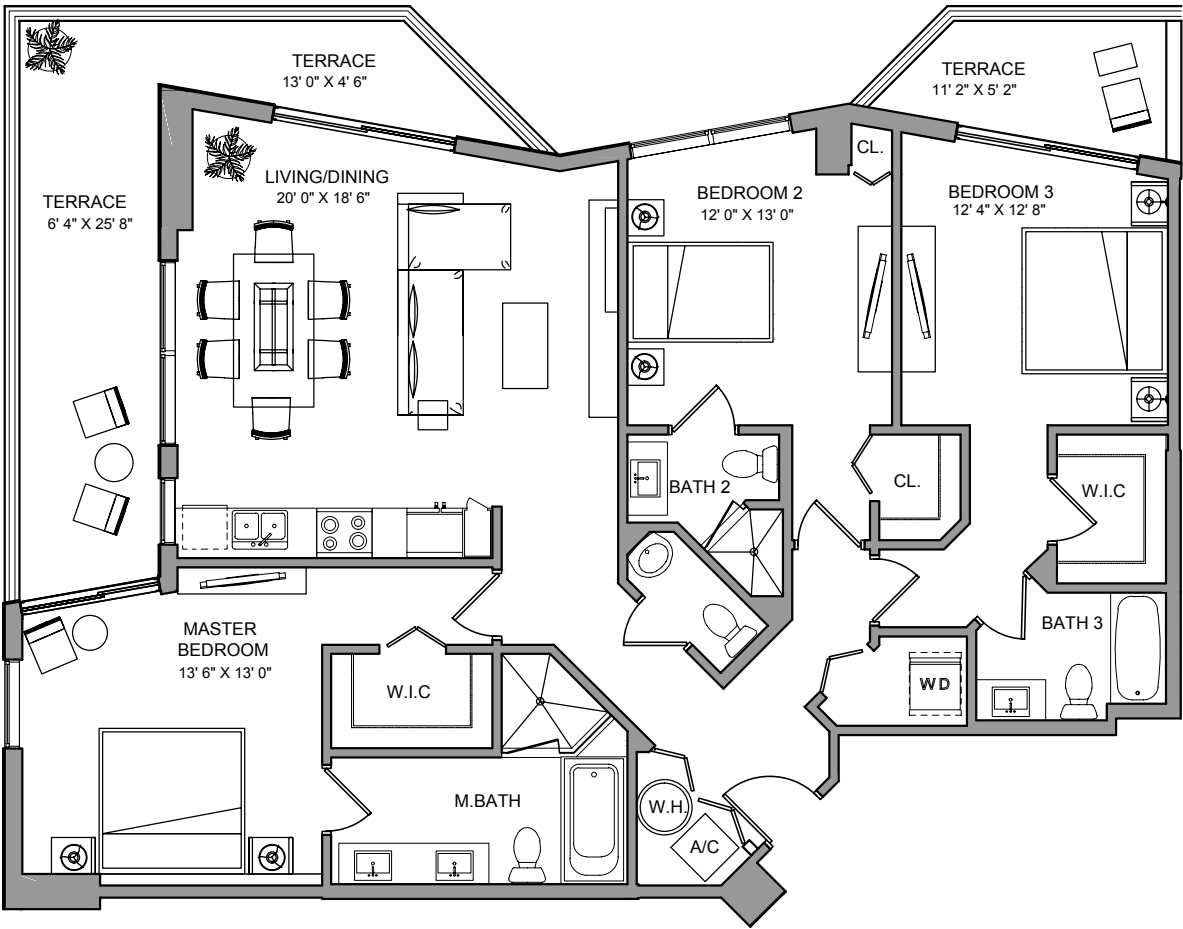
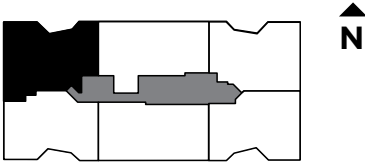
# BRICKELLTEN

## PH & LP FIVE

3 BEDROOMS / 3 1/2 BATH

INTERIOR.....1,538 sq ft 143 m<sup>2</sup>  
 TERRACE..... 328 sq ft 30 m<sup>2</sup>

**TOTAL 1,866 sq ft 173 m<sup>2</sup>**



These drawings are conceptual only and are for the convenience of reference. They should not be relied upon as representations, express or implied, of the final detail of the residences. Units shown are examples of the actual units. Stated square footages are ranges for a particular unit type and are measured to the exterior boundaries of the exterior walls and the centerline of interior demising walls. The area that would be determined by using the description and definition of the "Unit" set forth in the Declaration (which generally only includes the interior airspace between the perimeter walls and excludes interior structural components).



**ONE WORLD**  
 REAL ESTATE

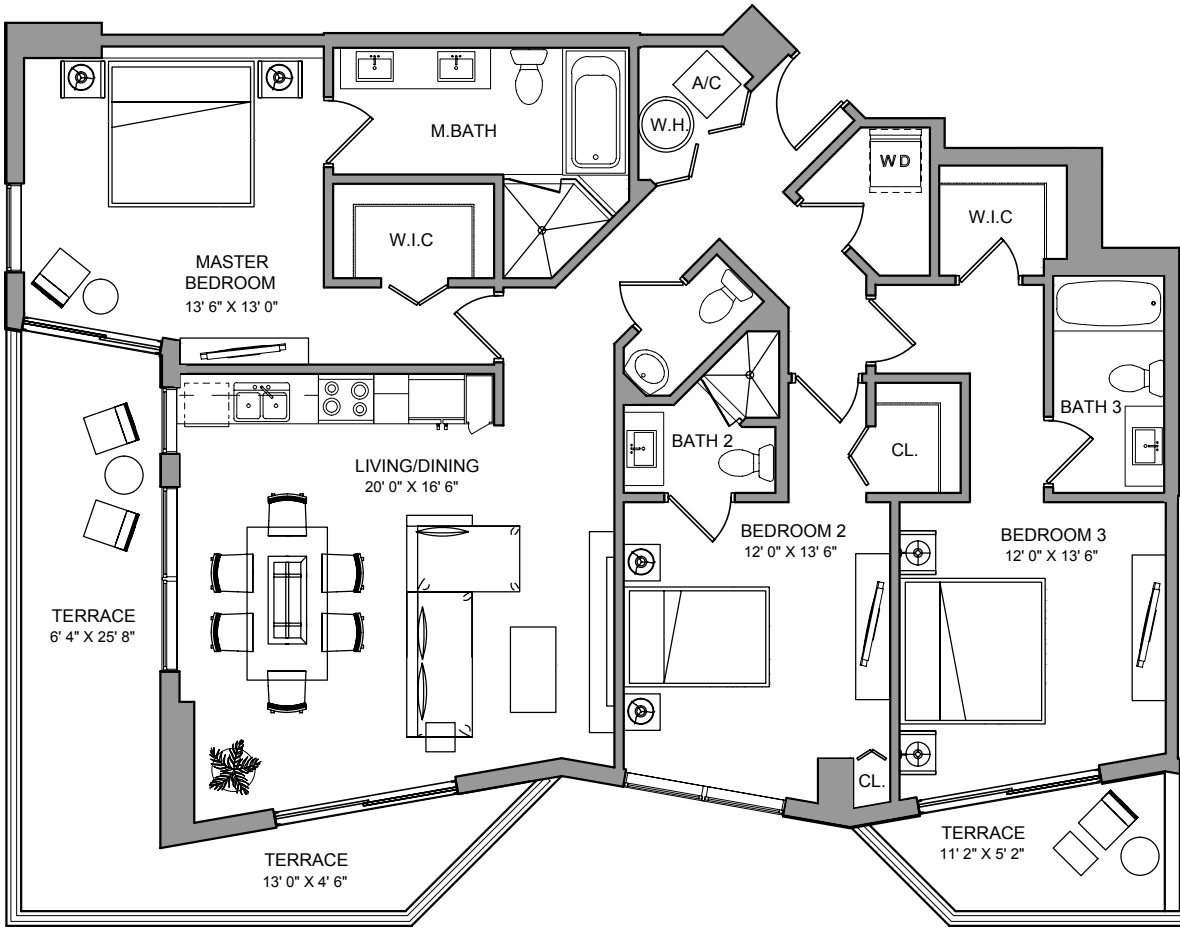
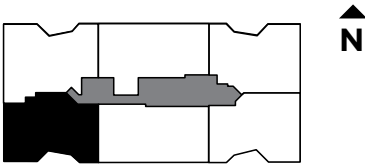
# BRICKELLTEN


## PH & LP SIX

3 BEDROOMS / 3 1/2 BATH

INTERIOR.....1,565 sq ft 145 m<sup>2</sup>  
 TERRACE..... 327 sq ft 30 m<sup>2</sup>

**TOTAL 1,892 sq ft 175 m<sup>2</sup>**



 These drawings are conceptual only and are for the convenience of reference. They should not be relied upon as representations, express or implied, of the final detail of the residences. Units shown are examples of the unit type and are not intended to represent individual units. Stated square footages are ranges for a particular unit type and are measured to the exterior boundaries of the exterior walls and the centerline of interior demising walls. The area that would be determined by using the description and definition of the "Unit" set forth in the Declaration (which generally only includes the interior airspace between the perimeter walls and excludes interior structural components).