

# BUILDING OVERVIEW

700 Feet

500+ Residences

Residences: Levels 8 - 54

Typical Floorplate | Level 8 - 45

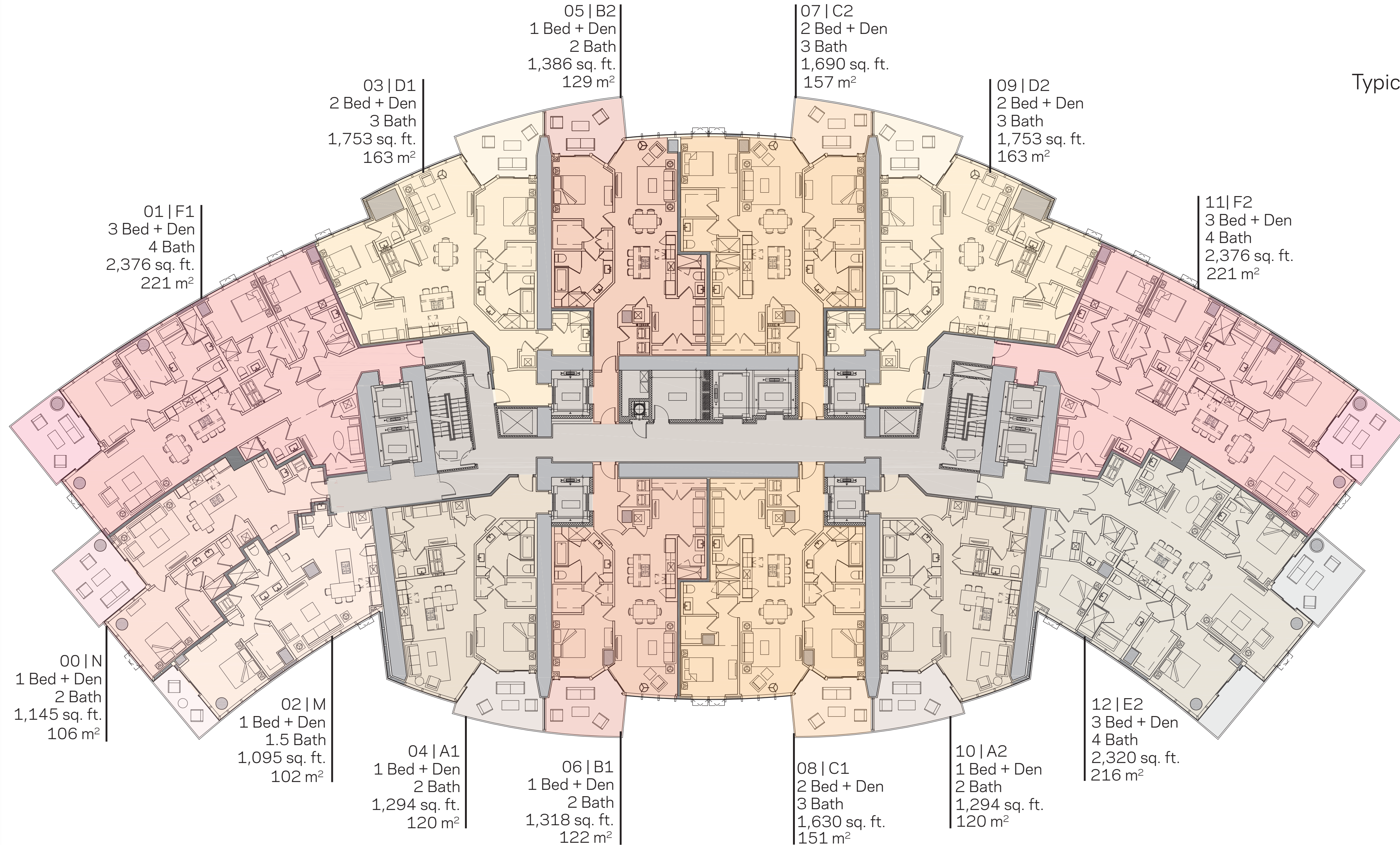
Typical Residence Types

1 Bed + den | 1.5 Bath

1 Bed + den | 2 Bath

2 Bed + den | 3 Bath

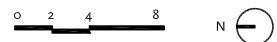
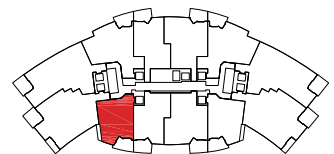
3 Bed + den | 4 Bath



Residence A1

1 Bedroom + Den | 2 Bath

Interior:	1,294 sq. ft.	120 m <sup>2</sup>
Outdoor:	197 sq. ft.	18 m <sup>2</sup>
Total:	1,491 sq. ft.	138 m <sup>2</sup>

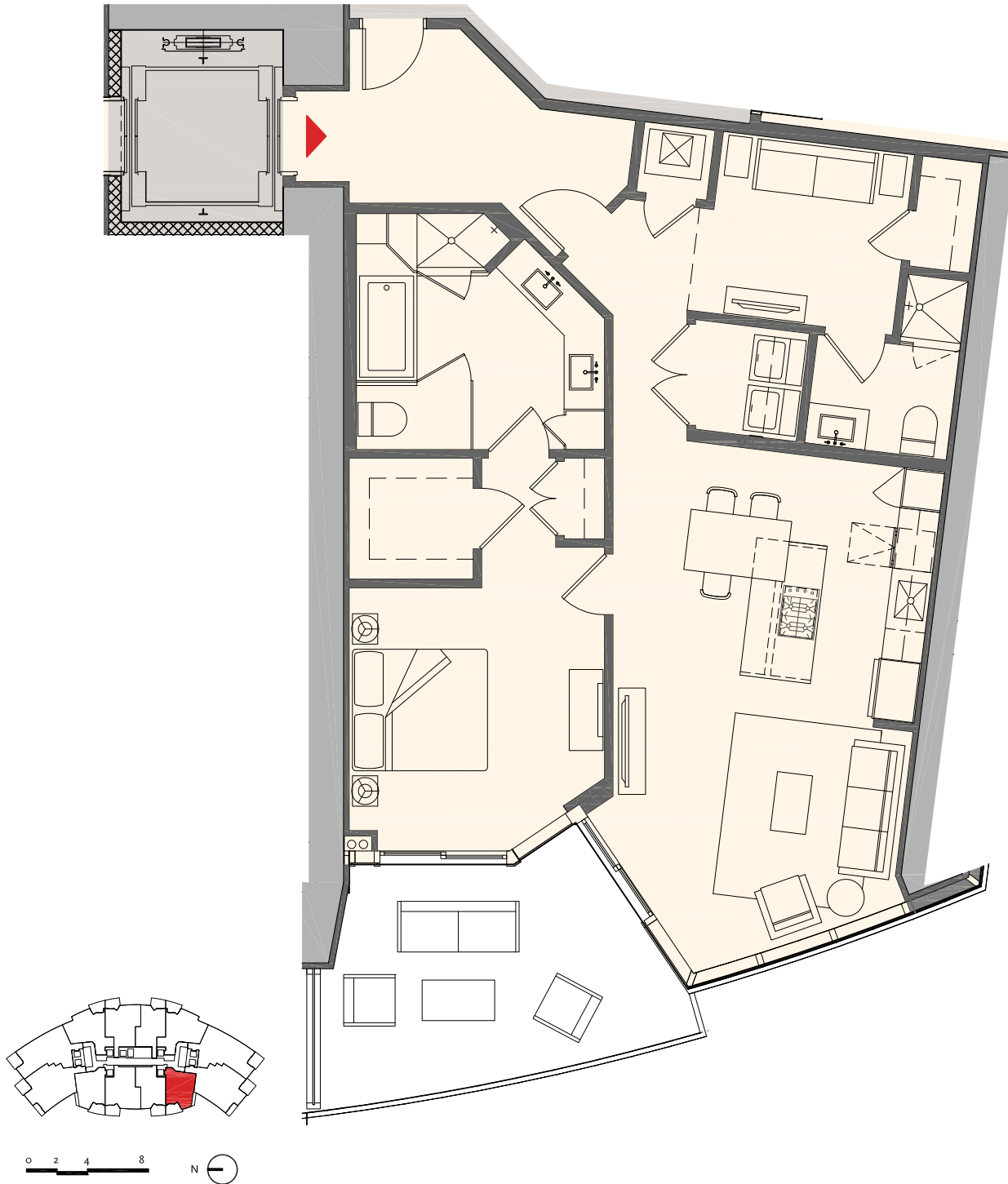


These drawings are conceptual only and are for the convenience of reference. They should not be relied upon as representations, express or implied, of the final detail of the residences. Units shown are examples of unit types and may not depict actual units. Stated square footages are ranges for a particular unit type and are measured to the exterior boundaries of the exterior walls and the centerline of interior demising walls and in fact vary from the area that would be determined by using the description and definition of the "Unit" set forth in the Declaration (which generally only includes the interior airspace between the perimeter walls and excludes interior structural components).

Residence A2

1 Bedroom + Den | 2 Bath

Interior:	1,294 sq. ft.	120 m <sup>2</sup>
Outdoor:	197 sq. ft.	18 m <sup>2</sup>
Total:	1,491 sq. ft.	138 m <sup>2</sup>



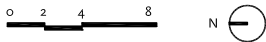
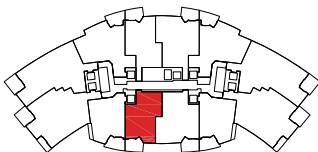
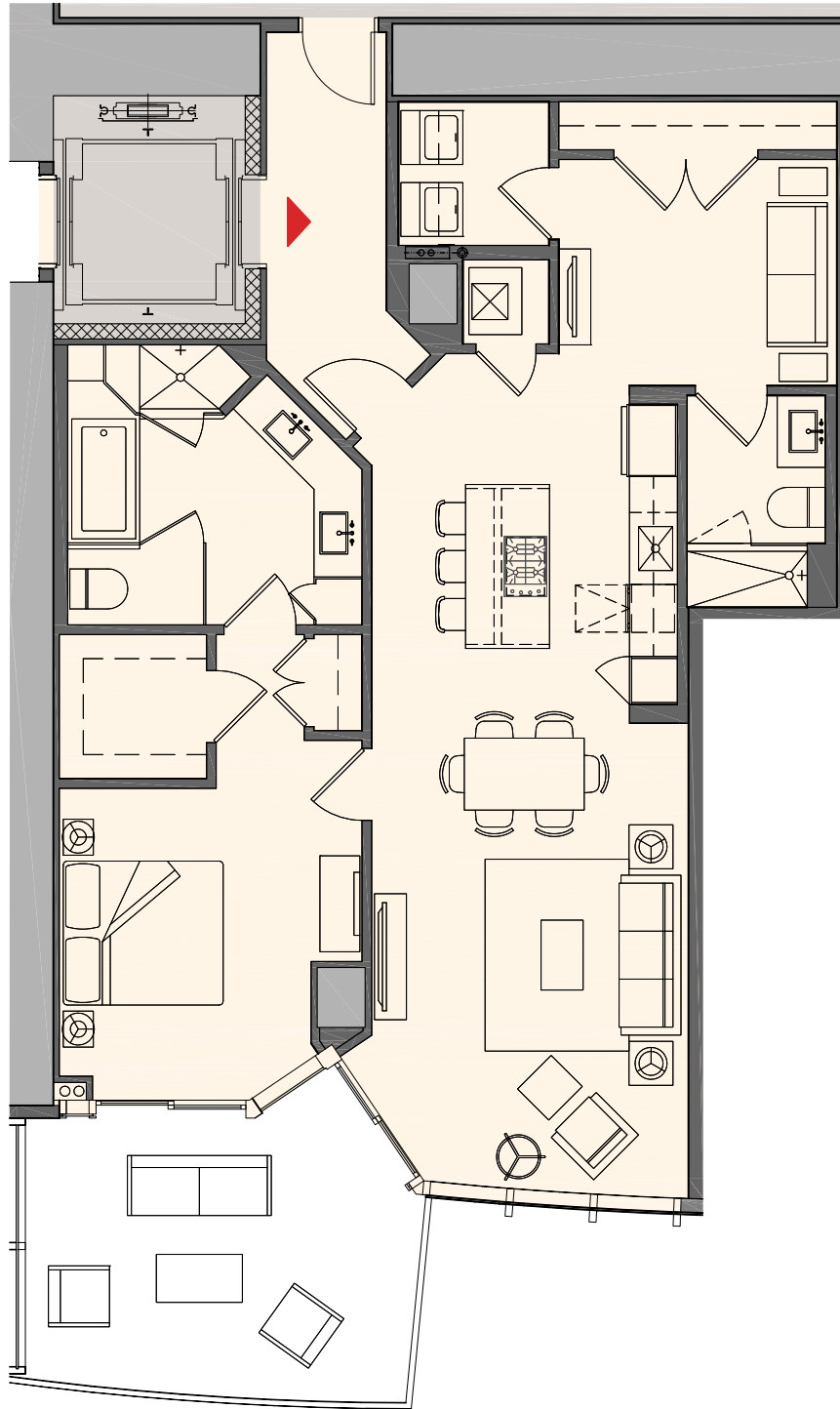
These drawings are conceptual only and are for the convenience of reference. They should not be relied upon as representations, express or implied, of the final detail of the residences. Units shown are examples of unit types and may not depict actual units. Stated square footages are ranges for a particular unit type and are measured to the exterior boundaries of the exterior walls and the centerline of interior demising walls and in fact vary from the area that would be determined by using the description and definition of the "Unit" set forth in the Declaration (which generally only includes the interior airspace between the perimeter walls and excludes interior structural components).



Residence B1

1 Bedroom + Den | 2 Bath

Interior:	1,318 sq. ft.	122 m <sup>2</sup>
Outdoor:	205 sq. ft.	19 m <sup>2</sup>
Total:	1,521 sq. ft.	141 m <sup>2</sup>

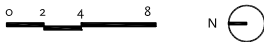
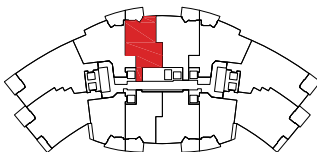
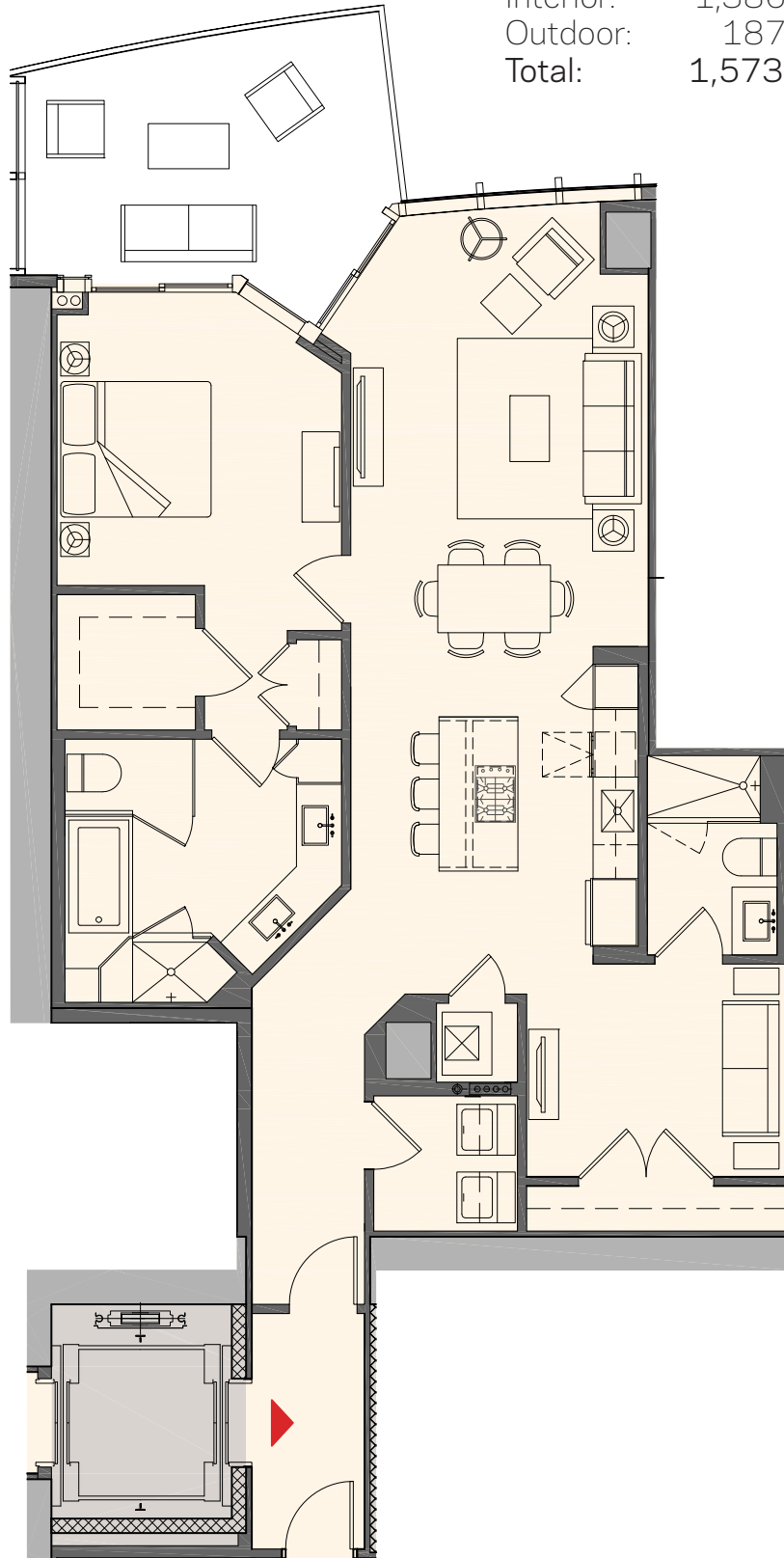


These drawings are conceptual only and are for the convenience of reference. They should not be relied upon as representations, express or implied, of the final detail of the residences. Units shown are examples of unit types and may not depict actual units. Stated square footages are ranges for a particular unit type and are measured to the exterior boundaries of the exterior walls and the centerline of interior demising walls and in fact vary from the area that would be determined by using the description and definition of the "Unit" set forth in the Declaration (which generally only includes the interior airspace between the perimeter walls and excludes interior structural components).

Residence B2

1 Bedroom + Den | 2 Bath

Interior:	1,386 sq. ft.	129 m <sup>2</sup>
Outdoor:	187 sq. ft.	17 m <sup>2</sup>
Total:	1,573 sq. ft.	146 m <sup>2</sup>

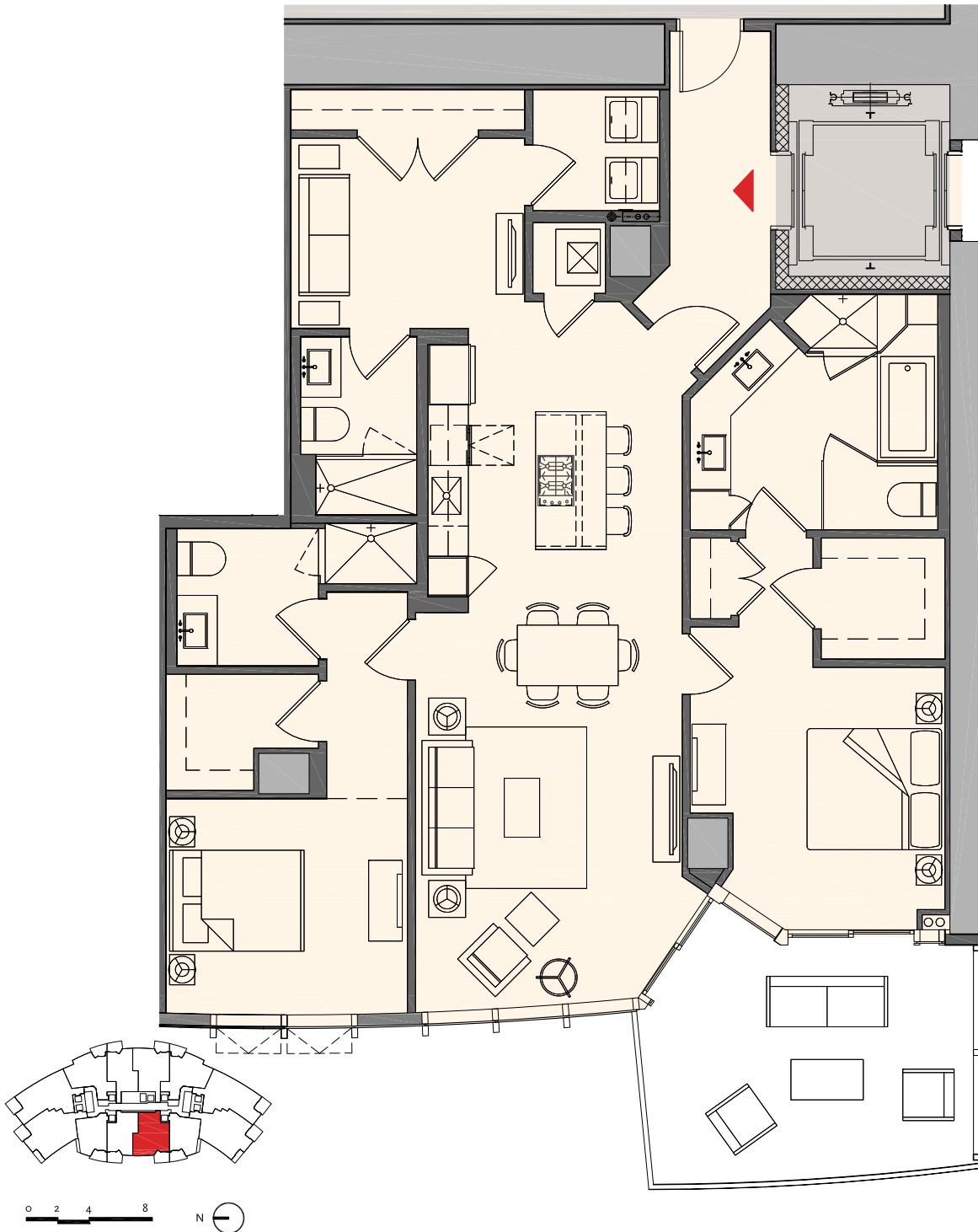


These drawings are conceptual only and are for the convenience of reference. They should not be relied upon as representations, express or implied, of the final detail of the residences. Units shown are examples of unit types and may not depict actual units. Stated square footages are ranges for a particular unit type and are measured to the exterior boundaries of the exterior walls and the centerline of interior demising walls and in fact vary from the area that would be determined by using the description and definition of the "Unit" set forth in the Declaration (which generally only includes the interior airspace between the perimeter walls and excludes interior structural components).

Residence C1

2 Bedroom + Den | 3 Bath

Interior:	1,630 sq. ft.	151 m <sup>2</sup>
Outdoor:	205 sq. ft.	19 m <sup>2</sup>
Total:	1,835 sq. ft.	170 m <sup>2</sup>

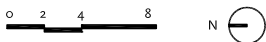
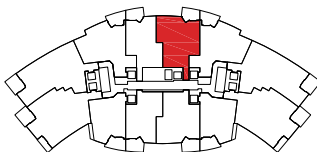
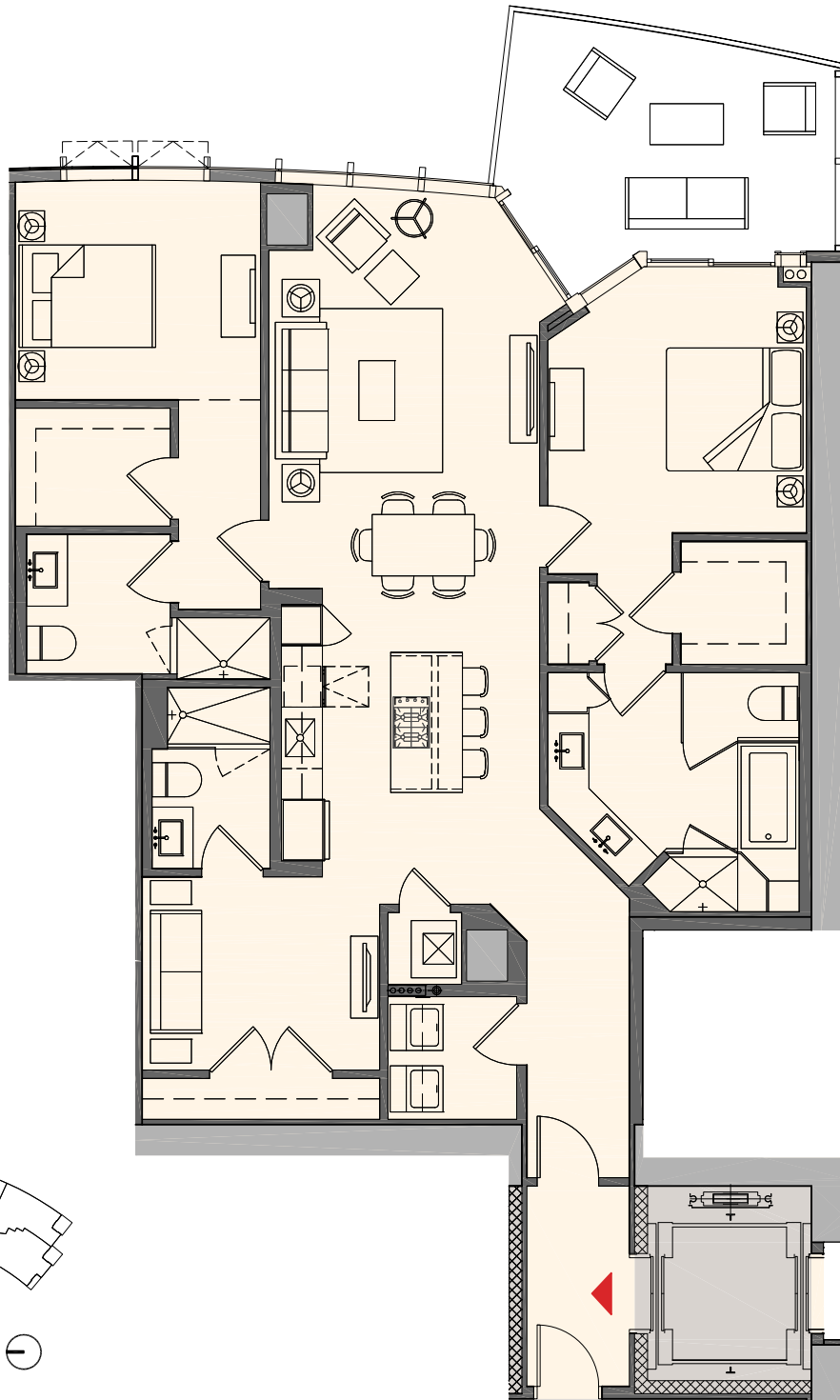


These drawings are conceptual only and are for the convenience of reference. They should not be relied upon as representations, express or implied, of the final detail of the residences. Units shown are examples of unit types and may not depict actual units. Stated square footages are ranges for a particular unit type and are measured to the exterior boundaries of the exterior walls and the centerline of interior demising walls and in fact vary from the area that would be determined by using the description and definition of the "Unit" set forth in the Declaration (which generally only includes the interior airspace between the perimeter walls and excludes interior structural components).

## Residence C2

## 2 Bedroom + Den | 3 Bath

Interior:	1,690 sq. ft.	157 m <sup>2</sup>
Outdoor:	187 sq. ft.	17 m <sup>2</sup>
Total:	1,877 sq. ft.	174 m <sup>2</sup>



These drawings are conceptual only and are for the convenience of reference. They should not be relied upon as representations, express or implied, of the final detail of the residences. Units shown are examples of unit types and may not depict actual units. Stated square footages are ranges for a particular unit type and are measured to the exterior boundaries of the exterior walls and the centerline of interior demising walls and in fact vary from the area that would be determined by using the description and definition of the "Unit" set forth in the Declaration (which generally only includes the interior airspace between the perimeter walls and excludes interior structural components).

## Residence D1

## 2 Bedroom + Den | 3 Bath

Interior:	1,753 sq. ft.	163 m <sup>2</sup>
Outdoor:	199 sq. ft.	18 m <sup>2</sup>
Total:	1,952 sq. ft.	181 m <sup>2</sup>



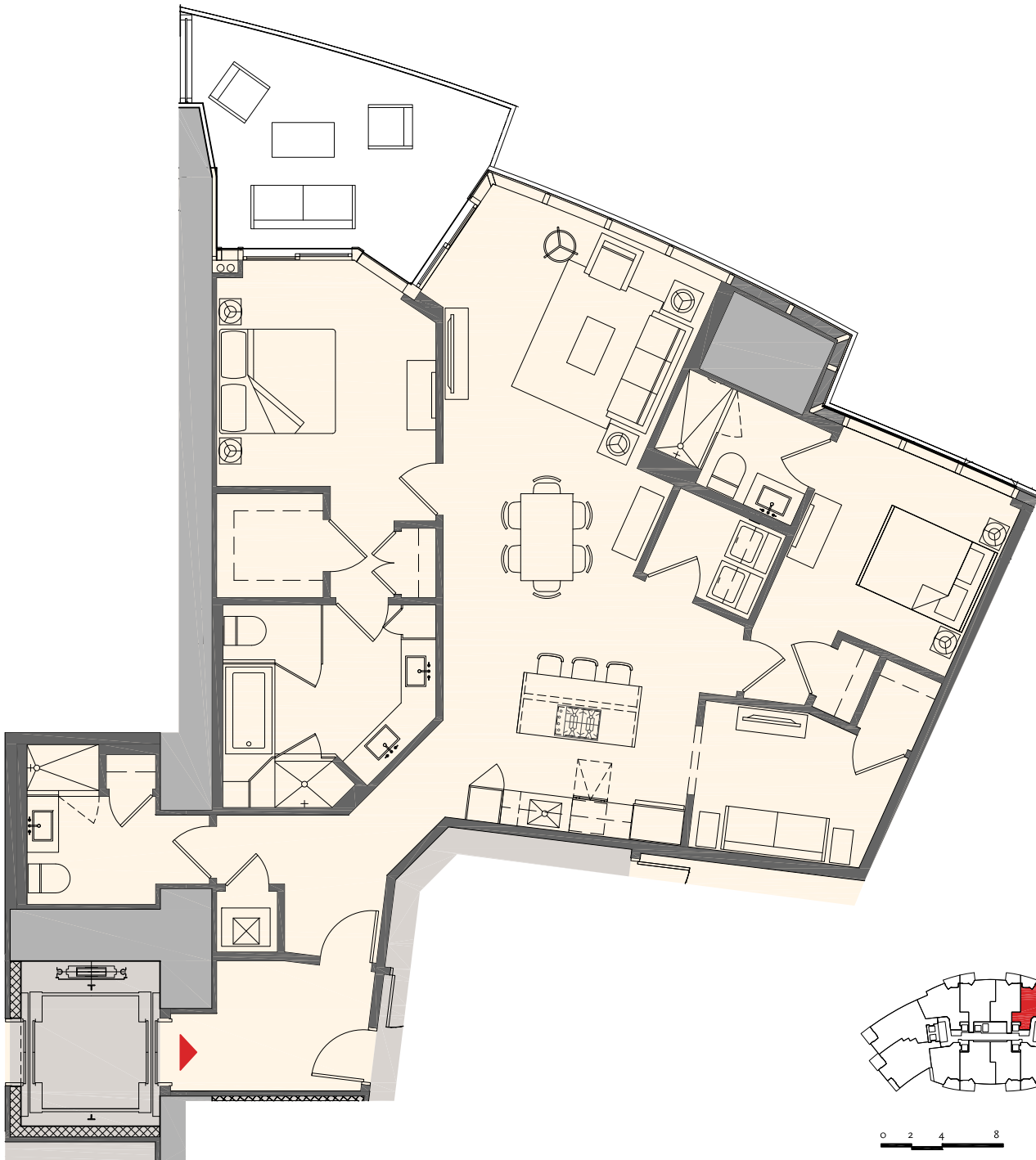
These drawings are conceptual only and are for the convenience of reference. They should not be relied upon as representations, express or implied, of the final detail of the residences. Units shown are examples of unit types and may not depict actual units. Stated square footages are ranges for a particular unit type and are measured to the exterior boundaries of the exterior walls and the centerline of interior demising walls and in fact vary from the area that would be determined by using the description and definition of the "Unit" set forth in the Declaration (which generally only includes the interior airspace between the perimeter walls and excludes interior structural components).



Residence D2

2 Bedroom + Den | 3 Bath

Interior:	1,753 sq. ft.	163 m <sup>2</sup>
Outdoor:	199 sq. ft.	18 m <sup>2</sup>
Total:	1,952 sq. ft.	181 m <sup>2</sup>



These drawings are conceptual only and are for the convenience of reference. They should not be relied upon as representations, express or implied, of the final detail of the residences. Units shown are examples of unit types and may not depict actual units. Stated square footages are ranges for a particular unit type and are measured to the exterior boundaries of the exterior walls and the centerline of interior demising walls and in fact vary from the area that would be determined by using the description and definition of the "Unit" set forth in the Declaration (which generally only includes the interior airspace between the perimeter walls and excludes interior structural components).



Residence E1

3 Bedroom + Den | 4 Bath

Interior:	2,320 sq. ft.	216 m <sup>2</sup>
Outdoor:	291 sq. ft.	27 m <sup>2</sup>
Total:	2,611 sq. ft.	243 m <sup>2</sup>

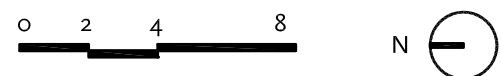
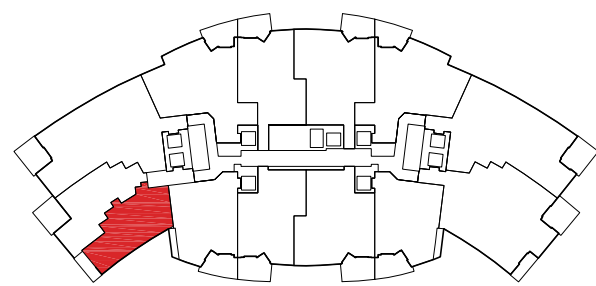
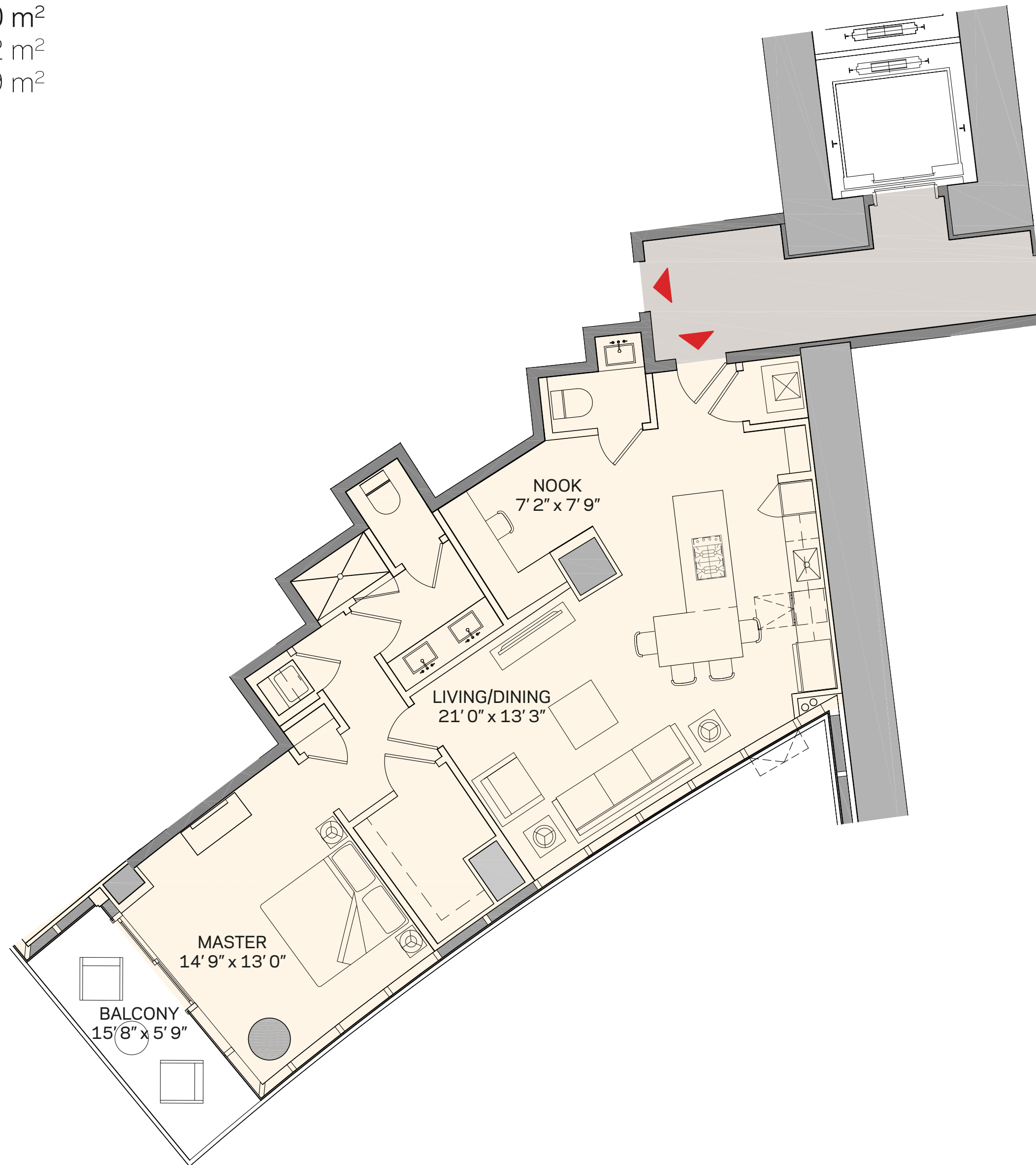


These drawings are conceptual only and are for the convenience of reference. They should not be relied upon as representations, express or implied, of the final detail of the residences. Units shown are examples of unit types and may not depict actual units. Stated square footages are ranges for a particular unit type and are measured to the exterior boundaries of the exterior walls and the centerline of interior demising walls and in fact vary from the area that would be determined by using the description and definition of the "Unit" set forth in the Declaration (which generally only includes the interior airspace between the perimeter walls and excludes interior structural components).

# 1 Bedroom | 1.5 Bath

Total: 1,186 sq. ft. | 110 m<sup>2</sup>  
Interior: 1,095 sq. ft. | 102 m<sup>2</sup>  
Outdoor: 91 sq. ft. | 9 m<sup>2</sup>

# RESIDENCE M

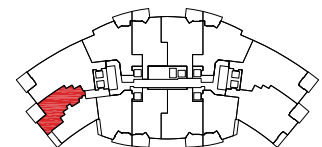
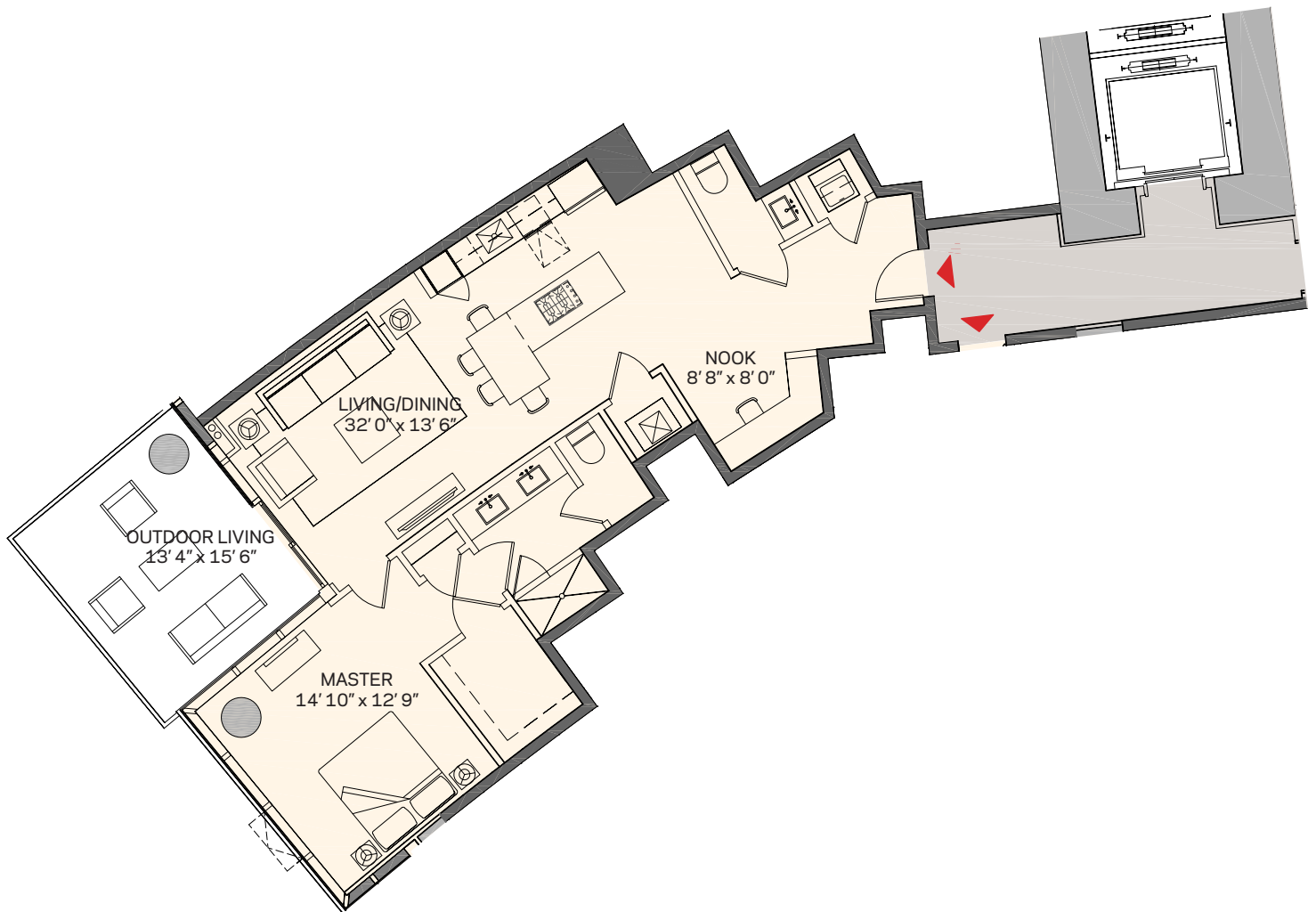


These drawings are conceptual only and are for the convenience of reference. They should not be relied upon as representations, express or implied, of the final detail of the residences. Units shown are examples of unit types and may not depict actual units. Stated square footages are ranges for a particular unit type and are measured to the exterior boundaries of the exterior walls and the centerline of interior demising walls and in fact vary from the area that would be determined by using the description and definition of the "Unit" set forth in the Declaration (which generally only includes the interior airspace between the perimeter walls and excludes interior structural components).

Residence N

1 Bedroom | 1.5 Bath

Total: 1,346 sq. ft. | 125 m<sup>2</sup>  
Interior: 1,145 sq. ft. | 106 m<sup>2</sup>  
Outdoor: 201 sq. ft. | 19 m<sup>2</sup>

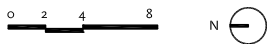
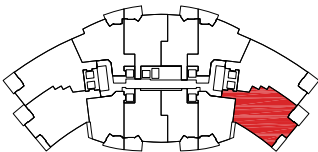


These drawings are conceptual only and are for the convenience of reference. They should not be relied upon as representations, express or implied, of the final detail of the residences. Units shown are examples of unit types and may not depict actual units. Stated square footages are ranges for a particular unit type and are measured to the exterior boundaries of the exterior walls and the centerline of interior demising walls and in fact vary from the area that would be determined by using the description and definition of the "Unit" set forth in the Declaration (which generally only includes the interior airspace between the perimeter walls and excludes interior structural components). Note that measurements of rooms set forth on this floor plan are generally taken at the greatest points of each given room (as if the room were a perfect rectangle), without regard for any cutouts. Accordingly, the area of the actual room will typically be smaller than the product obtained by multiplying the stated length times width. All dimensions are approximate and may vary with actual construction, and all floor plans and development plans are subject to change.

Residence E2

3 Bedroom + Den | 4 Bath

Interior:	2,320 sq. ft.	216 m <sup>2</sup>
Outdoor:	291 sq. ft.	27 m <sup>2</sup>
Total:	2,611 sq. ft.	243 m <sup>2</sup>



These drawings are conceptual only and are for the convenience of reference. They should not be relied upon as representations, express or implied, of the final detail of the residences. Units shown are examples of unit types and may not depict actual units. Stated square footages are ranges for a particular unit type and are measured to the exterior boundaries of the exterior walls and the centerline of interior demising walls and in fact vary from the area that would be determined by using the description and definition of the "Unit" set forth in the Declaration (which generally only includes the interior airspace between the perimeter walls and excludes interior structural components).

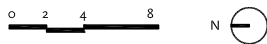
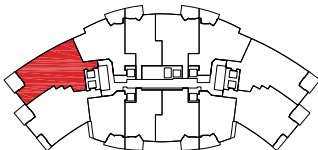




## Residence F1

## 3 Bedroom + Den | 4 Bath

Interior:	2,376 sq. ft.	221 m <sup>2</sup>
Outdoor:	202 sq. ft.	19 m <sup>2</sup>
Total:	2,578 sq. ft.	240 m <sup>2</sup>



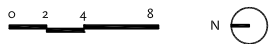
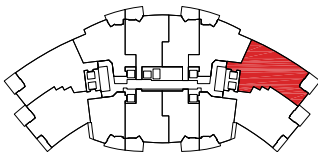
These drawings are conceptual only and are for the convenience of reference. They should not be relied upon as representations, express or implied, of the final detail of the residences. Units shown are examples of unit types and may not depict actual units. Stated square footages are ranges for a particular unit type and are measured to the exterior boundaries of the exterior walls and the centerline of interior demising walls and in fact vary from the area that would be determined by using the description and definition of the "Unit" set forth in the Declaration (which generally only includes the interior airspace between the perimeter walls and excludes interior structural components).



## Residence F2

## 3 Bedroom + Den | 4 Bath

Interior:	2,376 sq. ft.	221 m <sup>2</sup>
Outdoor:	202 sq. ft.	19 m <sup>2</sup>
Total:	2,578 sq. ft.	240 m <sup>2</sup>



These drawings are conceptual only and are for the convenience of reference. They should not be relied upon as representations, express or implied, of the final detail of the residences. Units shown are examples of unit types and may not depict actual units. Stated square footages are ranges for a particular unit type and are measured to the exterior boundaries of the exterior walls and the centerline of interior demising walls and in fact vary from the area that would be determined by using the description and definition of the "Unit" set forth in the Declaration (which generally only includes the interior airspace between the perimeter walls and excludes interior structural components).

# PARAMOUNT

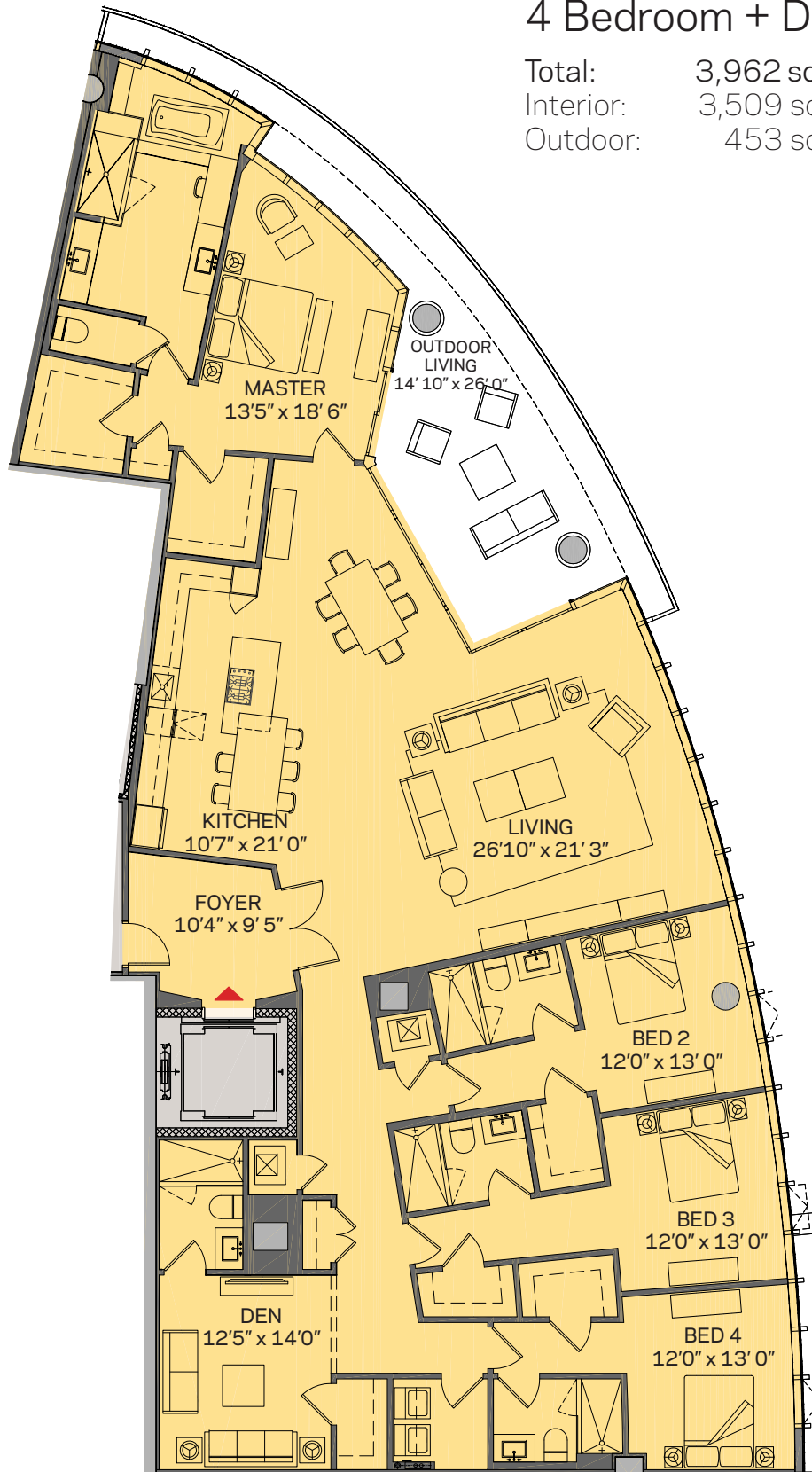
MIAMI WORLDCENTER



## Penthouse J1

## 4 Bedroom + Den | 5 Bath

Total:	3,962 sq. ft.	368 m <sup>2</sup>
Interior:	3,509 sq. ft.	326 m <sup>2</sup>
Outdoor:	453 sq. ft.	42 m <sup>2</sup>

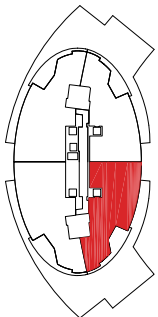
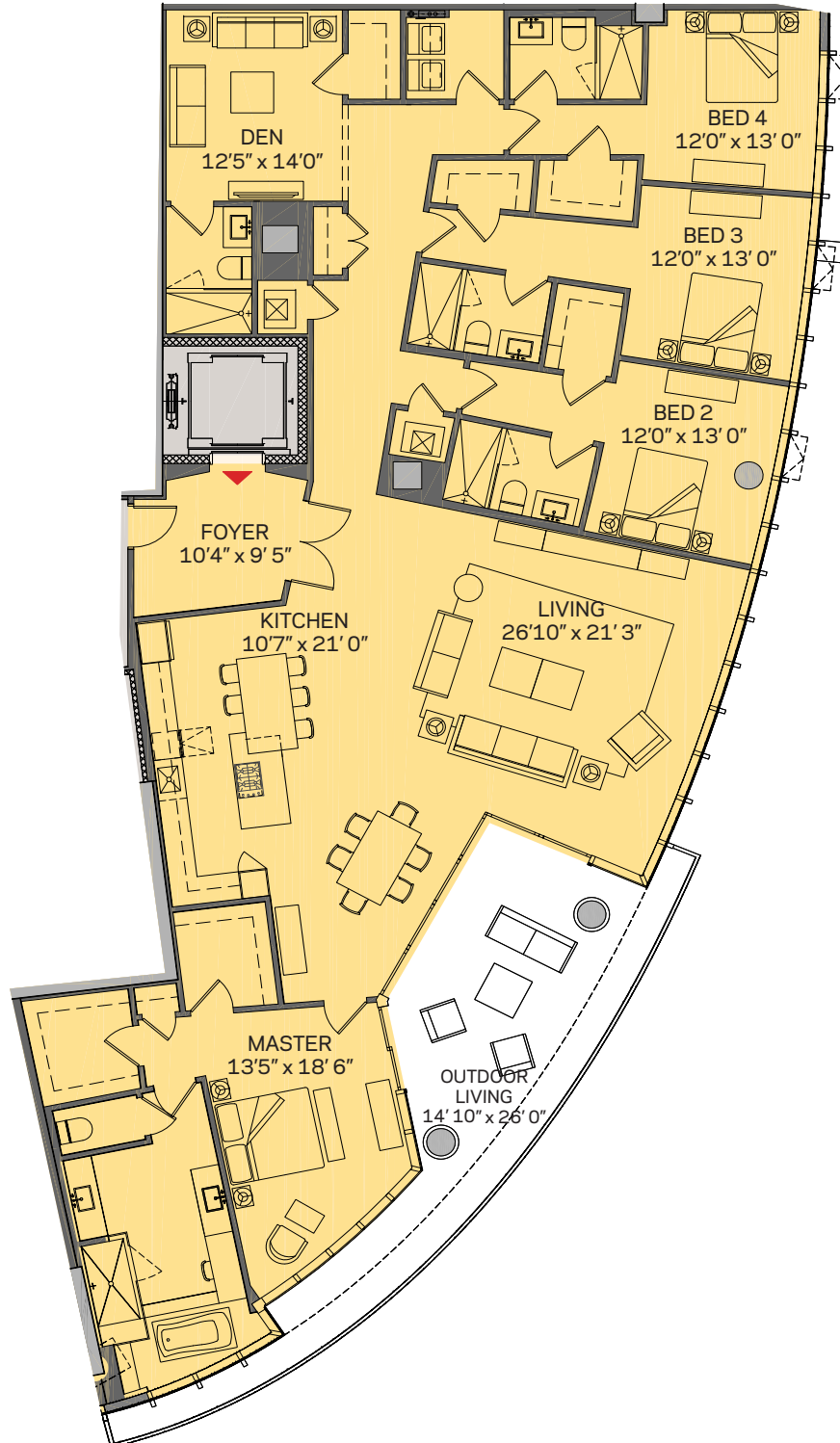


These drawings are conceptual only and are for the convenience of reference. They should not be relied upon as representations, express or implied, of the final detail of the residences. Units shown are examples of unit types and may not depict actual units. Stated square footages are ranges for a particular unit type and are measured to the exterior boundaries of the exterior walls and the centerline of interior demising walls and in fact vary from the area that would be determined by using the description and definition of the "Unit" set forth in the Declaration (which generally only includes the interior airspace between the perimeter walls and excludes interior structural components). Note that measurements of rooms set forth on this floor plan are generally taken at the greatest points of each given room (as if the room were a perfect rectangle), without regard for any cutouts. Accordingly, the area of the actual room will typically be smaller than the product obtained by multiplying the stated length times width. All dimensions are approximate and may vary with actual construction, and all floor plans and development plans are subject to change.

Penthouse J2

4 Bedroom + Den | 5 Bath

Total:	3,962 sq. ft.	368 m <sup>2</sup>
Interior:	3,509 sq. ft.	326 m <sup>2</sup>
Outdoor:	453 sq. ft.	42 m <sup>2</sup>

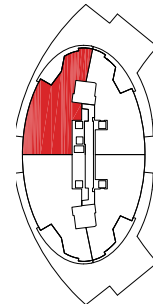
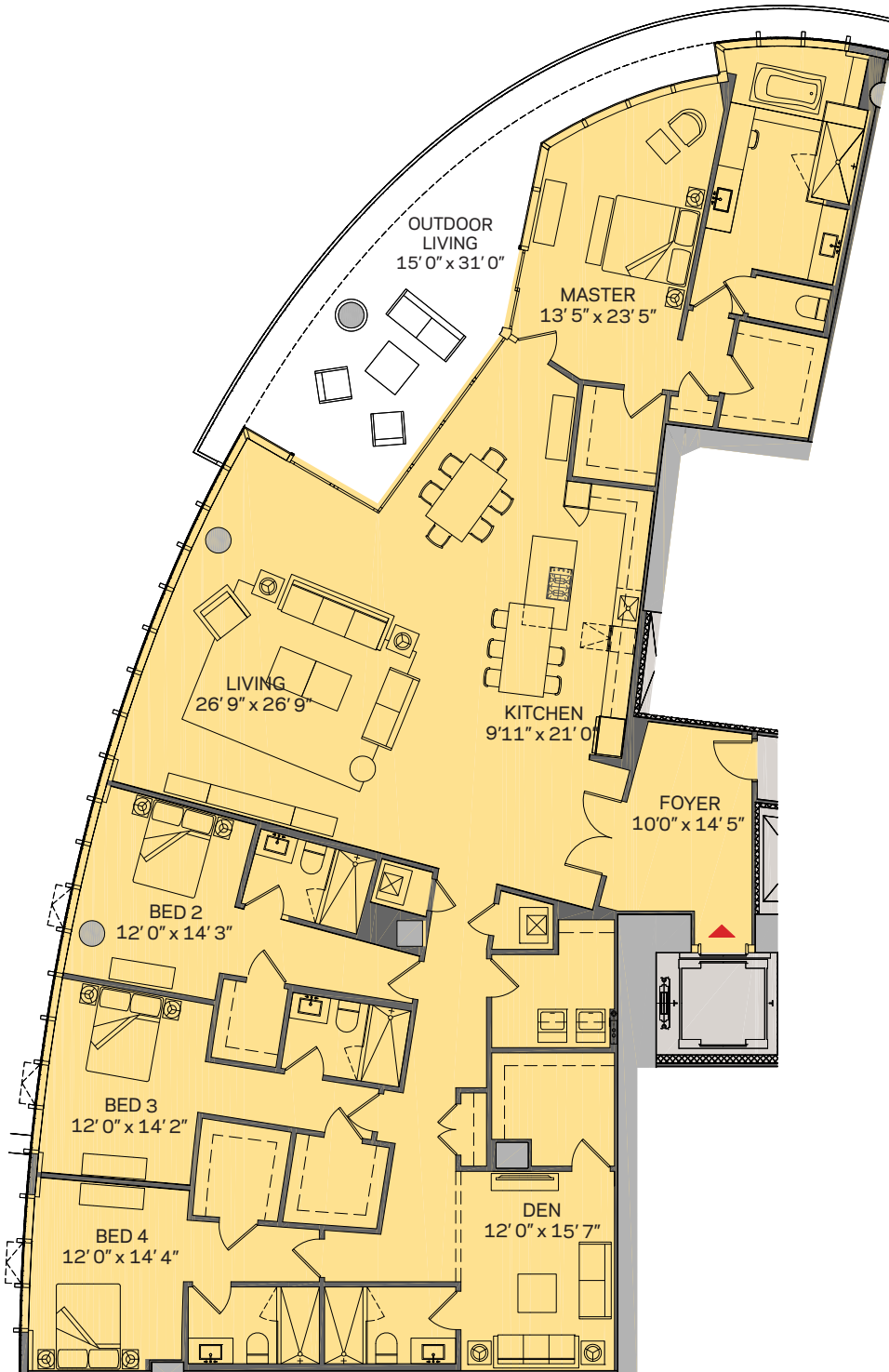


These drawings are conceptual only and are for the convenience of reference. They should not be relied upon as representations, express or implied, of the final detail of the residences. Units shown are examples of unit types and may not depict actual units. Stated square footages are ranges for a particular unit type and are measured to the exterior boundaries of the exterior walls and the centerline of interior demising walls and in fact vary from the area that would be determined by using the description and definition of the "Unit" set forth in the Declaration (which generally only includes the interior airspace between the perimeter walls and excludes interior structural components). Note that measurements of rooms set forth on this floor plan are generally taken at the greatest points of each given room (as if the room were a perfect rectangle), without regard for any cutouts. Accordingly, the area of the actual room will typically be smaller than the product obtained by multiplying the stated length times width. All dimensions are approximate and may vary with actual construction, and all floor plans and development plans are subject to change.

## Penthouse K1

## 4 Bedroom + Den | 5 Bath

Total:	4,617 sq. ft.	429 m <sup>2</sup>
Interior:	4,087 sq. ft.	380 m <sup>2</sup>
Outdoor:	530 sq. ft.	49 m <sup>2</sup>



These drawings are conceptual only and are for the convenience of reference. They should not be relied upon as representations, express or implied, of the final detail of the residences. Units shown are examples of unit types and may not depict actual units. Stated square footages are ranges for a particular unit type and are measured to the exterior boundaries of the exterior walls and the centerline of interior demising walls and in fact vary from the area that would be determined by using the description and definition of the "Unit" set forth in the Declaration (which generally only includes the interior airspace between the perimeter walls and excludes interior structural components). Note that measurements of rooms set forth on this floor plan are generally taken at the greatest points of each given room (as if the room were a perfect rectangle), without regard for any cutouts. Accordingly, the area of the actual room will typically be smaller than the product obtained by multiplying the stated length times width. All dimensions are approximate and may vary with actual construction, and all floor plans and development plans are subject to change.



# PARAMOUNT

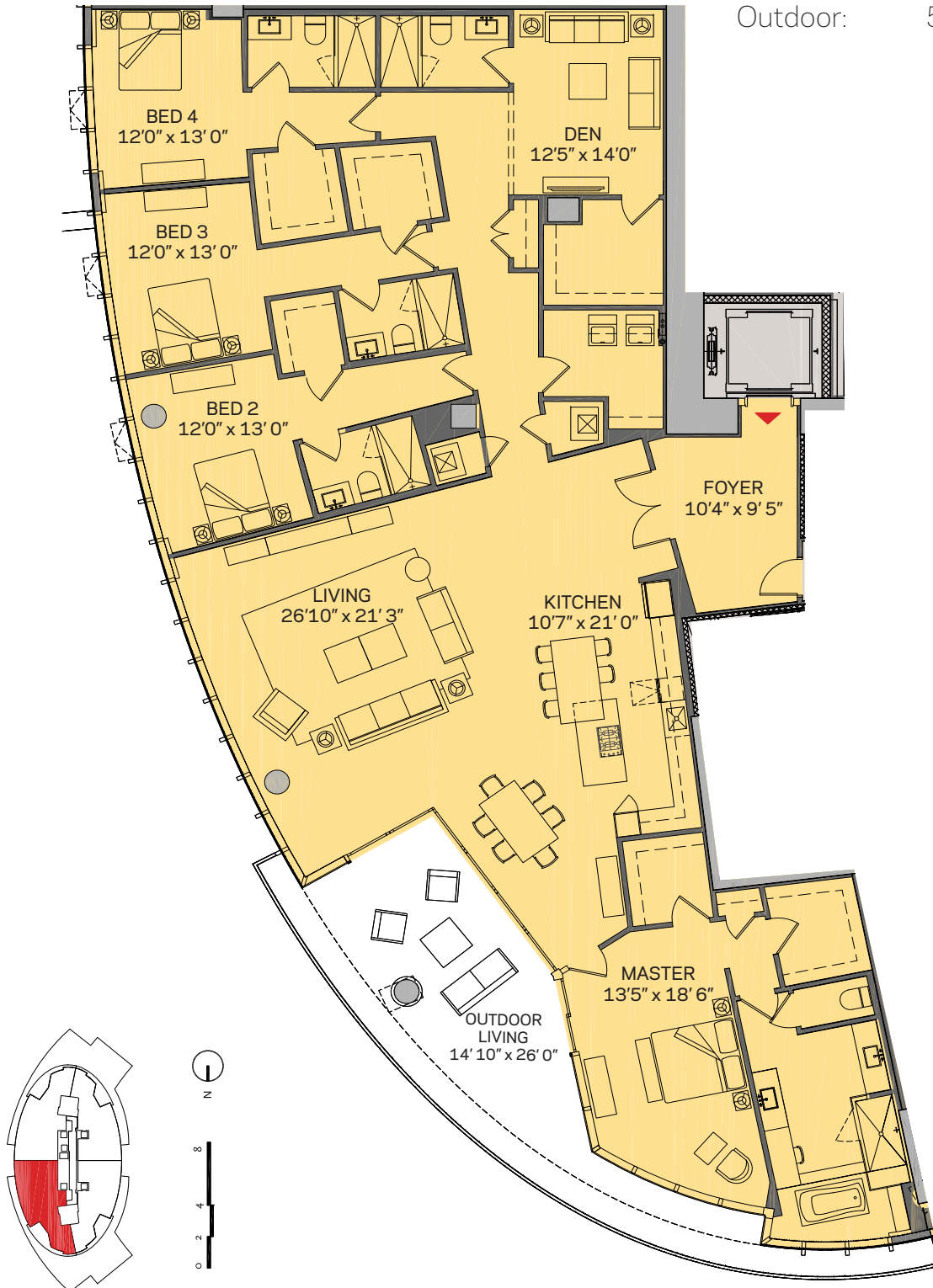
MIAMI WORLDCENTER



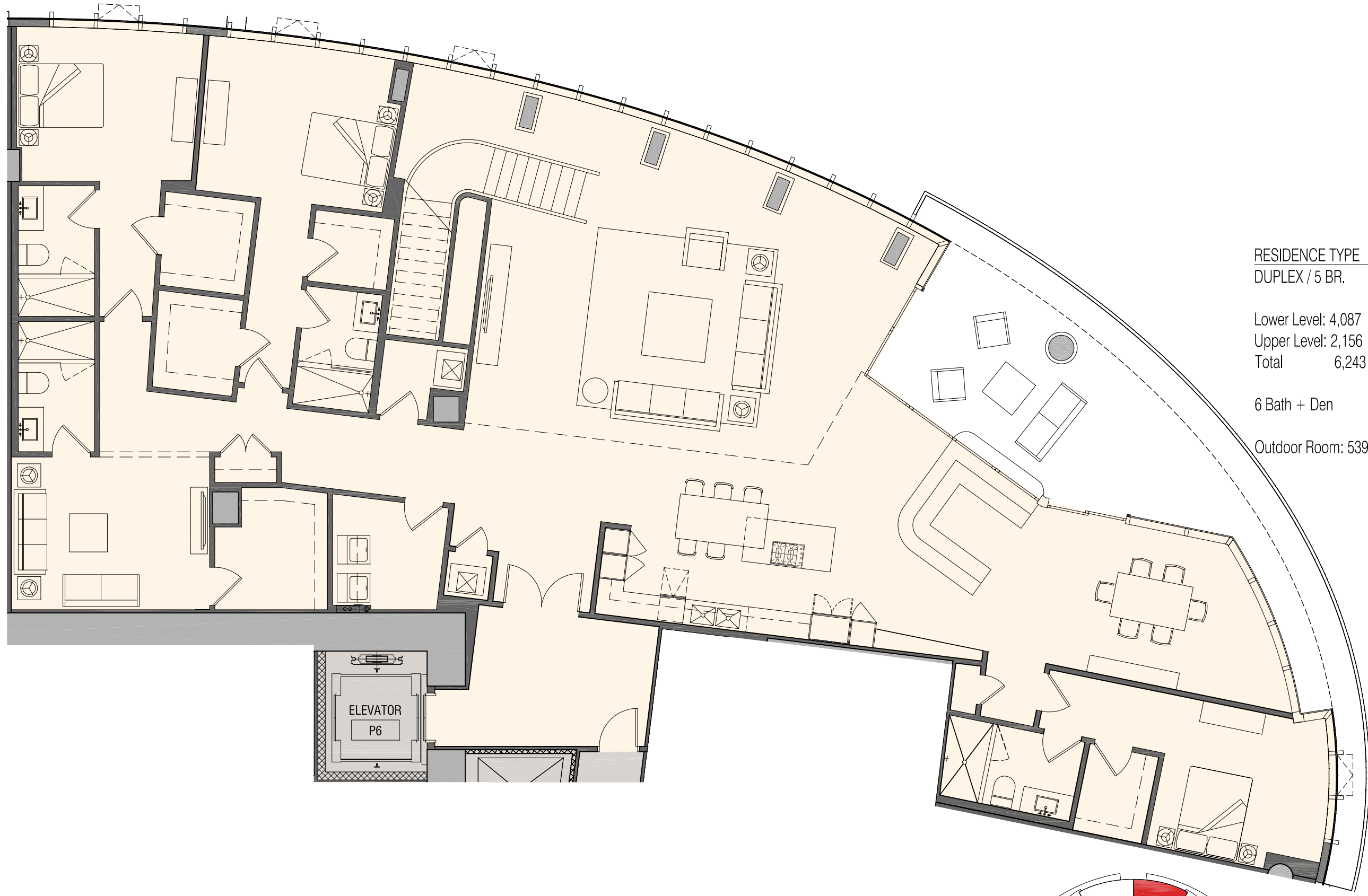
## Penthouse K2

### 4 Bedroom + Den | 5 Bath

Total:	4,617 sq. ft.	429 m <sup>2</sup>
Interior:	4,087 sq. ft.	380 m <sup>2</sup>
Outdoor:	530 sq. ft.	49 m <sup>2</sup>



These drawings are conceptual only and are for the convenience of reference. They should not be relied upon as representations, express or implied, of the final detail of the residences. Units shown are examples of unit types and may not depict actual units. Stated square footages are ranges for a particular unit type and are measured to the exterior boundaries of the exterior walls and the centerline of interior demising walls and in fact vary from the area that would be determined by using the description and definition of the "Unit" set forth in the Declaration (which generally only includes the interior airspace between the perimeter walls and excludes interior structural components). Note that measurements of rooms set forth on this floor plan are generally taken at the greatest points of each given room (as if the room were a perfect rectangle), without regard for any cutouts. Accordingly, the area of the actual room will typically be smaller than the product obtained by multiplying the stated length times width. All dimensions are approximate and may vary with actual construction, and all floor plans and development plans are subject to change.

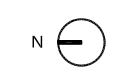
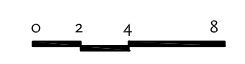
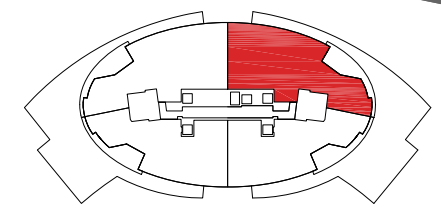


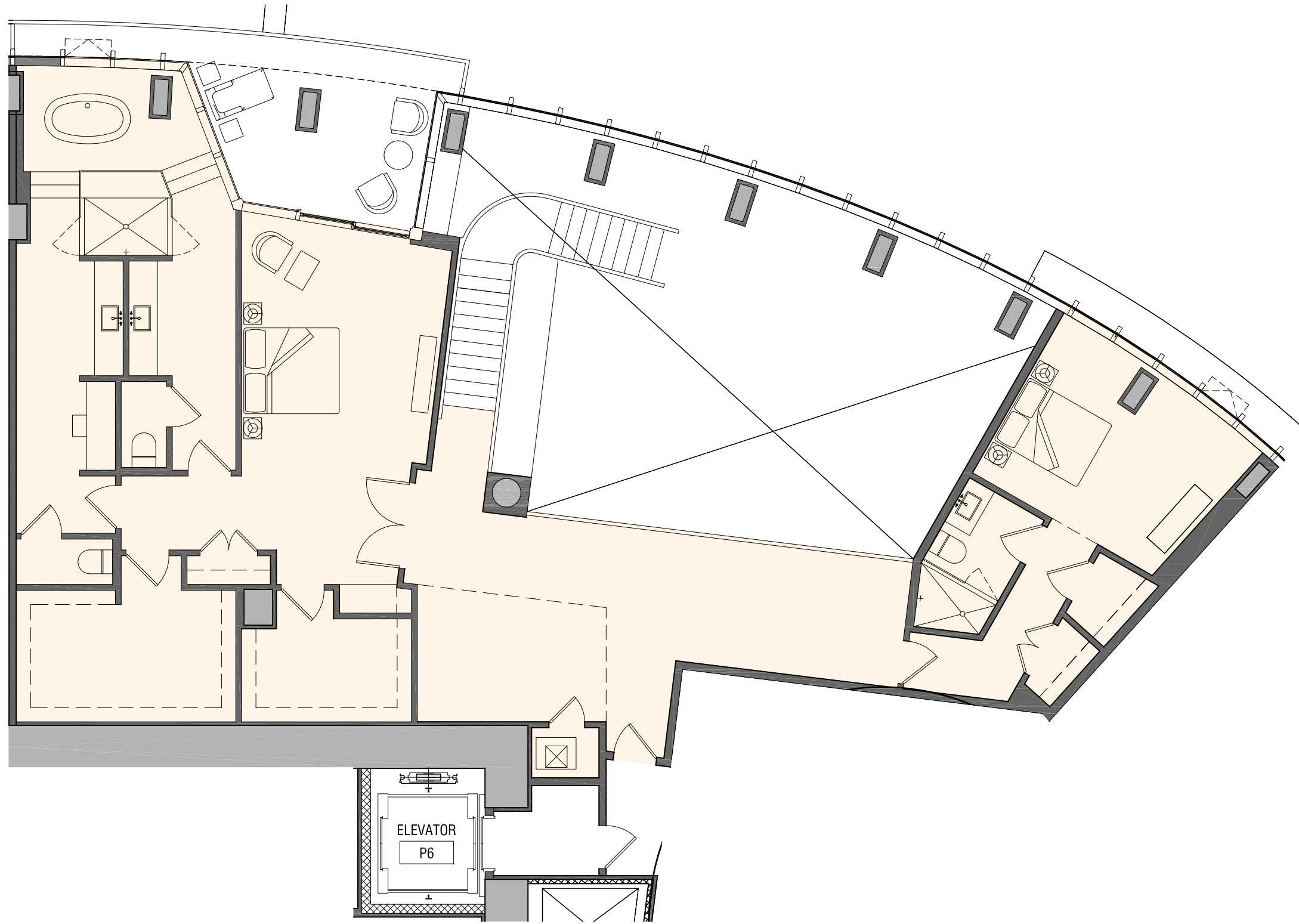
RESIDENCE TYPE L1  
 DUPLEX / 5 BR.

Lower Level: 4,087 sf  
 Upper Level: 2,156 sf  
 Total 6,243 sf

6 Bath + Den

Outdoor Room: 539 sf / 223 sf





RESIDENCE TYPE L1  
 DUPLEX / 5 BR.  
 UPPER LEVEL

