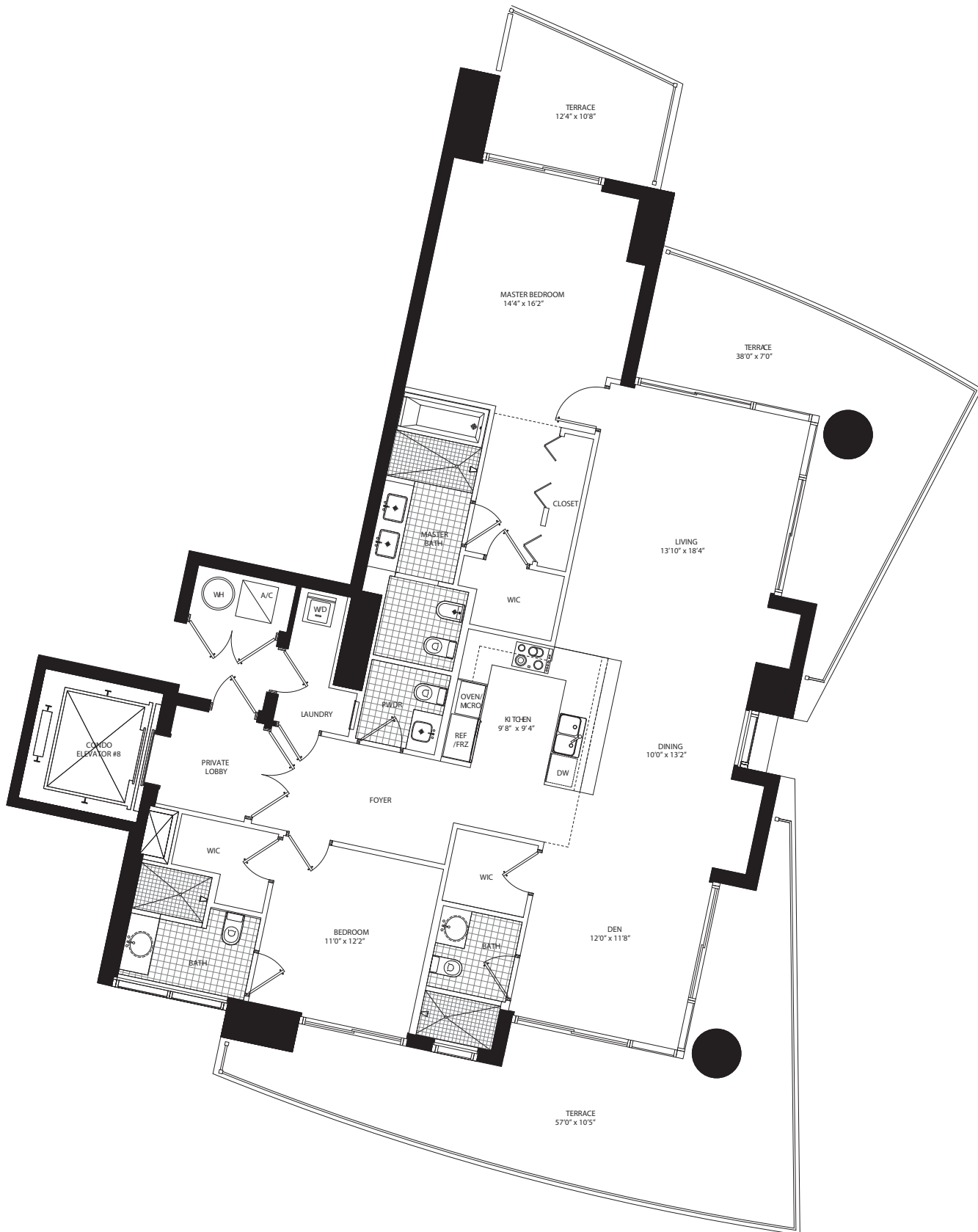


# UNIT A 2 Bedroom + Den • 3.5 Bath

All dimensions are approximate and all floor plans and development plans are subject to change by the developer without notice. Stated dimensions are measured to the exterior boundaries of the exterior walls and the centerline of interior demising walls and in fact vary from the dimensions that would be determined by using the description and definition of the "Unit" set forth in the Declaration (which generally only includes the interior airspace between the perimeter walls and excludes interior structural components).

Interior	1,796 sq ft	166.8 m <sup>2</sup>
Terrace	802 sq ft	74.6 m <sup>2</sup>
Total area	2,598 sq ft	241.4 m <sup>2</sup>

305-350-9842 [www.900BiscayneBayCondos.com](http://www.900BiscayneBayCondos.com)



# UNIT CR 2 Bedroom + Den • 3 Bath

All dimensions are approximate and all floor plans and development plans are subject to change by the developer without notice. Stated dimensions are measured to the exterior boundaries of the exterior walls and the centerline of interior demising walls and in fact vary from the dimensions that would be determined by using the description and definition of the "Unit" set forth in the Declaration (which generally only includes the interior airspace between the perimeter walls and excludes interior structural components).

Interior	1,712 sq ft	159.0 m <sup>2</sup>
Terrace	445 sq ft	41.4 m <sup>2</sup>
Total area	2,157 sq ft	200.4 m <sup>2</sup>

305-350-9842 [www.900BiscayneBayCondos.com](http://www.900BiscayneBayCondos.com)

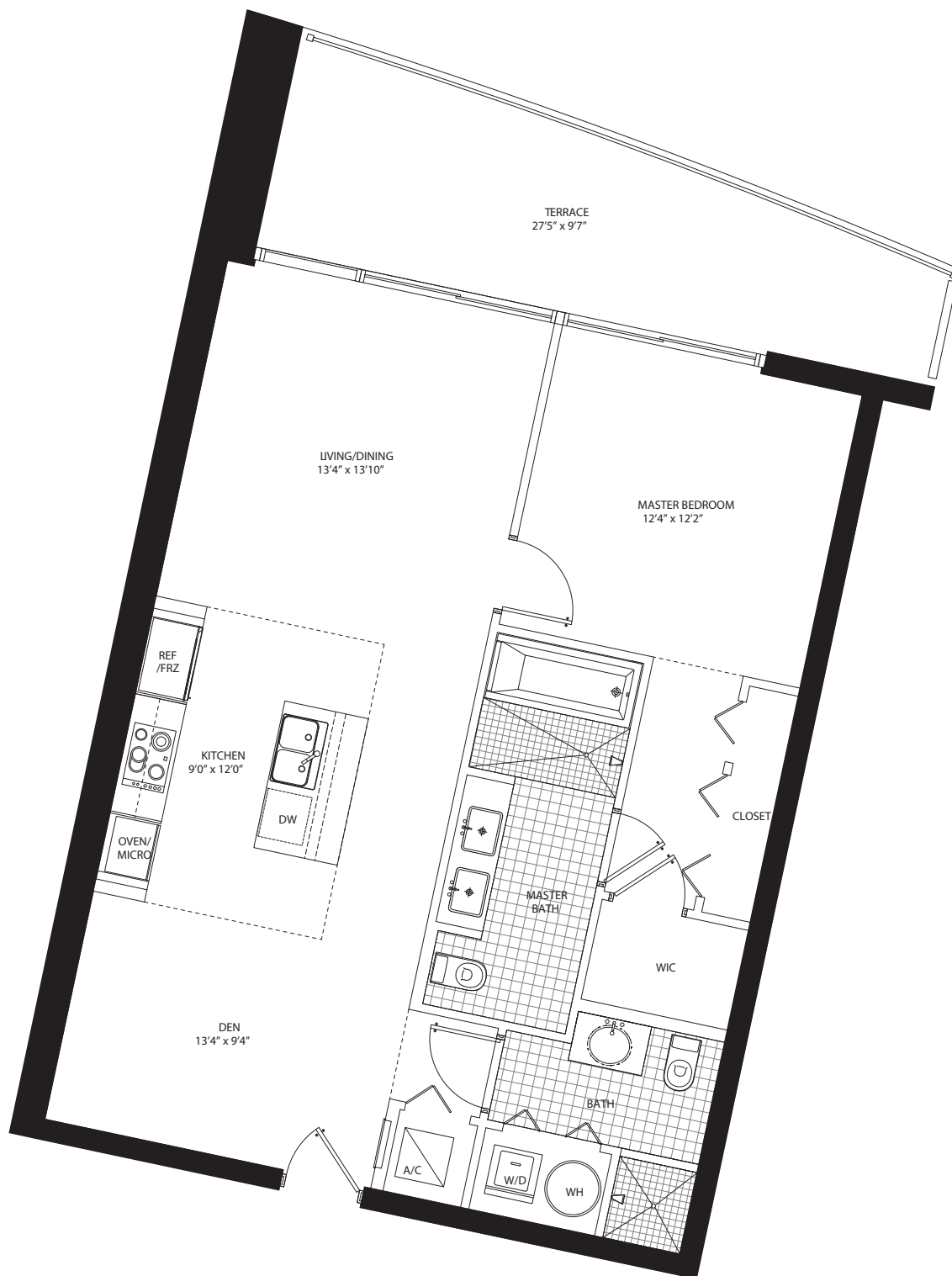


# UNIT B1 1 Bedroom + Den • 2 Bath

All dimensions are approximate and all floor plans and development plans are subject to change by the developer without notice. Stated dimensions are measured to the exterior boundaries of the exterior walls and the centerline of interior demising walls and in fact vary from the dimensions that would be determined by using the description and definition of the "Unit" set forth in the Declaration (which generally only includes the interior airspace between the perimeter walls and excludes interior structural components).

Interior	1,006 sq ft	93.4 m <sup>2</sup>
Terrace	200 sq ft	18.6 m <sup>2</sup>
Total area	1,206 sq ft	112.0 m <sup>2</sup>

305-350-9842 [www.900BiscayneBayCondos.com](http://www.900BiscayneBayCondos.com)



# UNIT B4 1 Bedroom + Den • 2 Bath

All dimensions are approximate and all floor plans and development plans are subject to change by the developer without notice. Stated dimensions are measured to the exterior boundaries of the exterior walls and the centerline of interior demising walls and in fact vary from the dimensions that would be determined by using the description and definition of the "Unit" set forth in the Declaration (which generally only includes the interior airspace between the perimeter walls and excludes interior structural components).

Interior	1,042 sq ft	96.8 m <sup>2</sup>
Terrace	192 sq ft	17.9 m <sup>2</sup>
Total area	1,234 sq ft	114.7 m <sup>2</sup>

305-350-9842 [www.900BiscayneBayCondos.com](http://www.900BiscayneBayCondos.com)

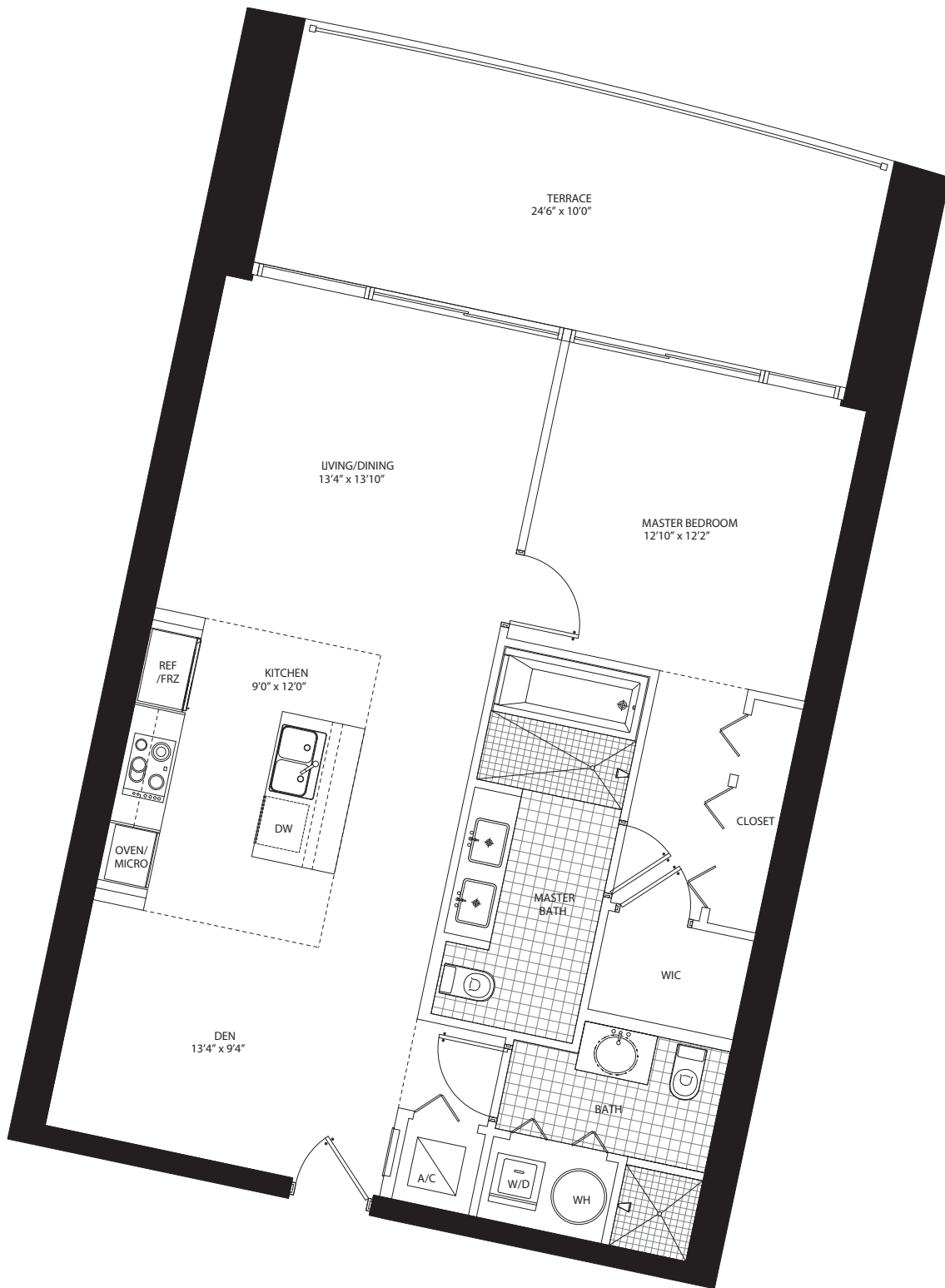


# UNIT B2 1 Bedroom + Den • 2 Bath

All dimensions are approximate and all floor plans and development plans are subject to change by the developer without notice. Stated dimensions are measured to the exterior boundaries of the exterior walls and the centerline of interior demising walls and in fact vary from the dimensions that would be determined by using the description and definition of the "Unit" set forth in the Declaration (which generally only includes the interior airspace between the perimeter walls and excludes interior structural components).

Interior	1,023 sq ft	95.0 m <sup>2</sup>
Terrace	243 sq ft	22.6 m <sup>2</sup>
Total area	1,266 sq ft	117.6 m <sup>2</sup>

305-350-9842 [www.900BiscayneBayCondos.com](http://www.900BiscayneBayCondos.com)

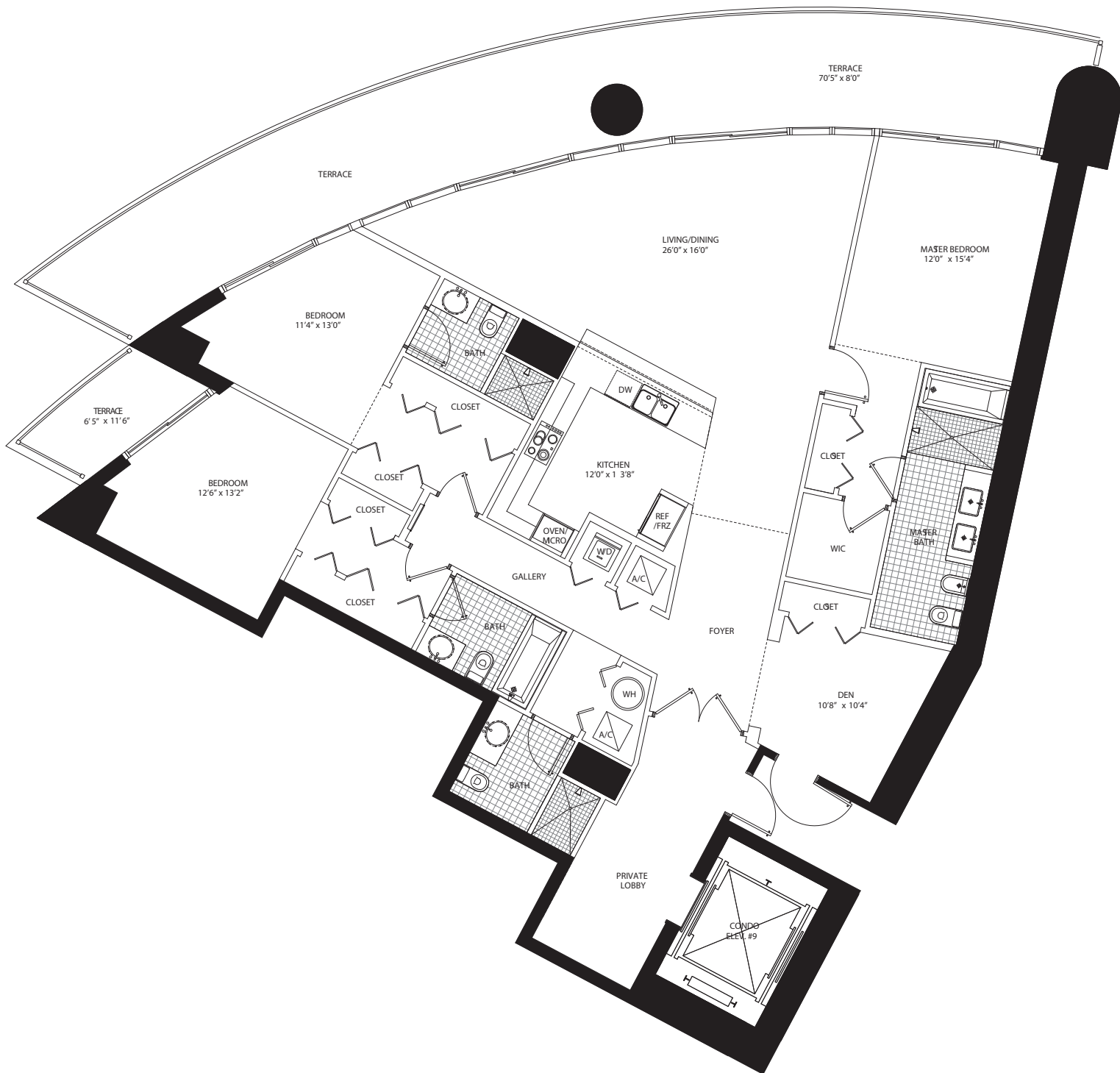


# UNIT D 3 Bedroom + Den • 4 Bath

All dimensions are approximate and all floor plans and development plans are subject to change by the developer without notice. Stated dimensions are measured to the exterior boundaries of the exterior walls and the centerline of interior demising walls and in fact vary from the dimensions that would be determined by using the description and definition of the "Unit" set forth in the Declaration (which generally only includes the interior airspace between the perimeter walls and excludes interior structural components).

Interior	2,335 sq ft	216.9 m <sup>2</sup>
Terrace	639 sq ft	59.4 m <sup>2</sup>
Total area	2,974 sq ft	276.3 m <sup>2</sup>

305-350-9842 [www.900BiscayneBayCondos.com](http://www.900BiscayneBayCondos.com)



# UNIT B3 1 Bedroom + Den • 2 Bath

All dimensions are approximate and all floor plans and development plans are subject to change by the developer without notice. Stated dimensions are measured to the exterior boundaries of the exterior walls and the centerline of interior demising walls and in fact vary from the dimensions that would be determined by using the description and definition of the "Unit" set forth in the Declaration (which generally only includes the interior airspace between the perimeter walls and excludes interior structural components).

Interior	1,042 sq ft	96.8 m <sup>2</sup>
Terrace	209 sq ft	19.4 m <sup>2</sup>
Total area	1,251 sq ft	116.2 m <sup>2</sup>

305-350-9842 [www.900BiscayneBayCondos.com](http://www.900BiscayneBayCondos.com)

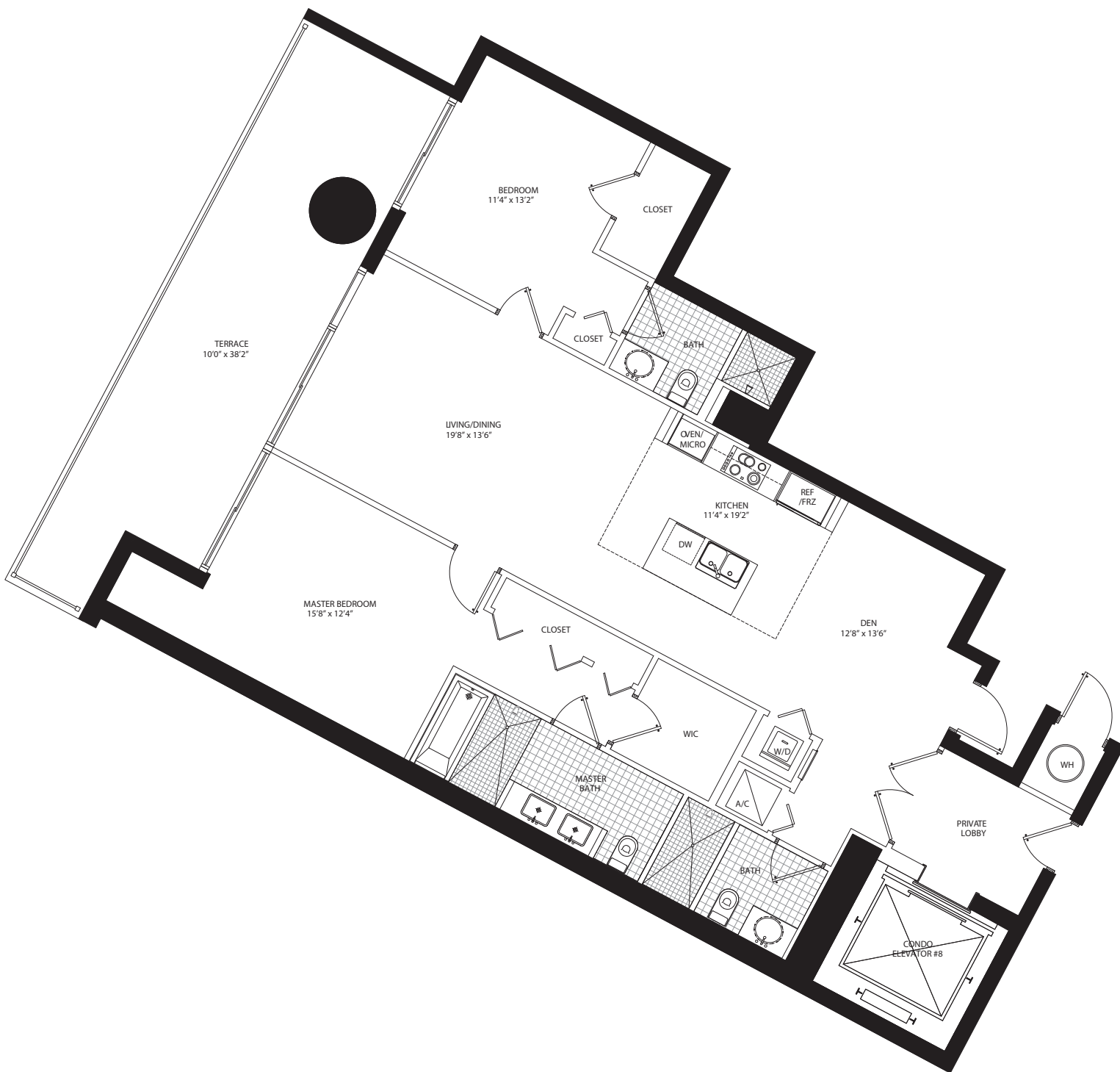


# UNIT E 2 Bedroom + Den • 3 Bath

All dimensions are approximate and all floor plans and development plans are subject to change by the developer without notice. Stated dimensions are measured to the exterior boundaries of the exterior walls and the centerline of interior demising walls and in fact vary from the dimensions that would be determined by using the description and definition of the "Unit" set forth in the Declaration (which generally only includes the interior airspace between the perimeter walls and excludes interior structural components).

Interior	1,576 sq ft	146.4 m <sup>2</sup>
Terrace	351 sq ft	32.6 m <sup>2</sup>
Total area	1,927 sq ft	178.0 m <sup>2</sup>

305-350-9842 [www.900BiscayneBayCondos.com](http://www.900BiscayneBayCondos.com)





# UNIT CR 2 Bedroom + Den • 3 Bath

All dimensions are approximate and all floor plans and development plans are subject to change by the developer without notice. Stated dimensions are measured to the exterior boundaries of the exterior walls and the centerline of interior demising walls and in fact vary from the dimensions that would be determined by using the description and definition of the "Unit" set forth in the Declaration (which generally only includes the interior airspace between the perimeter walls and excludes interior structural components).

Interior	1,712 sq ft	159.0 m <sup>2</sup>
Terrace	445 sq ft	41.4 m <sup>2</sup>
<b>Total area</b>	<b>2,157 sq ft</b>	<b>200.4 m<sup>2</sup></b>

305-350-9842 [www.900BiscayneBayCondos.com](http://www.900BiscayneBayCondos.com)

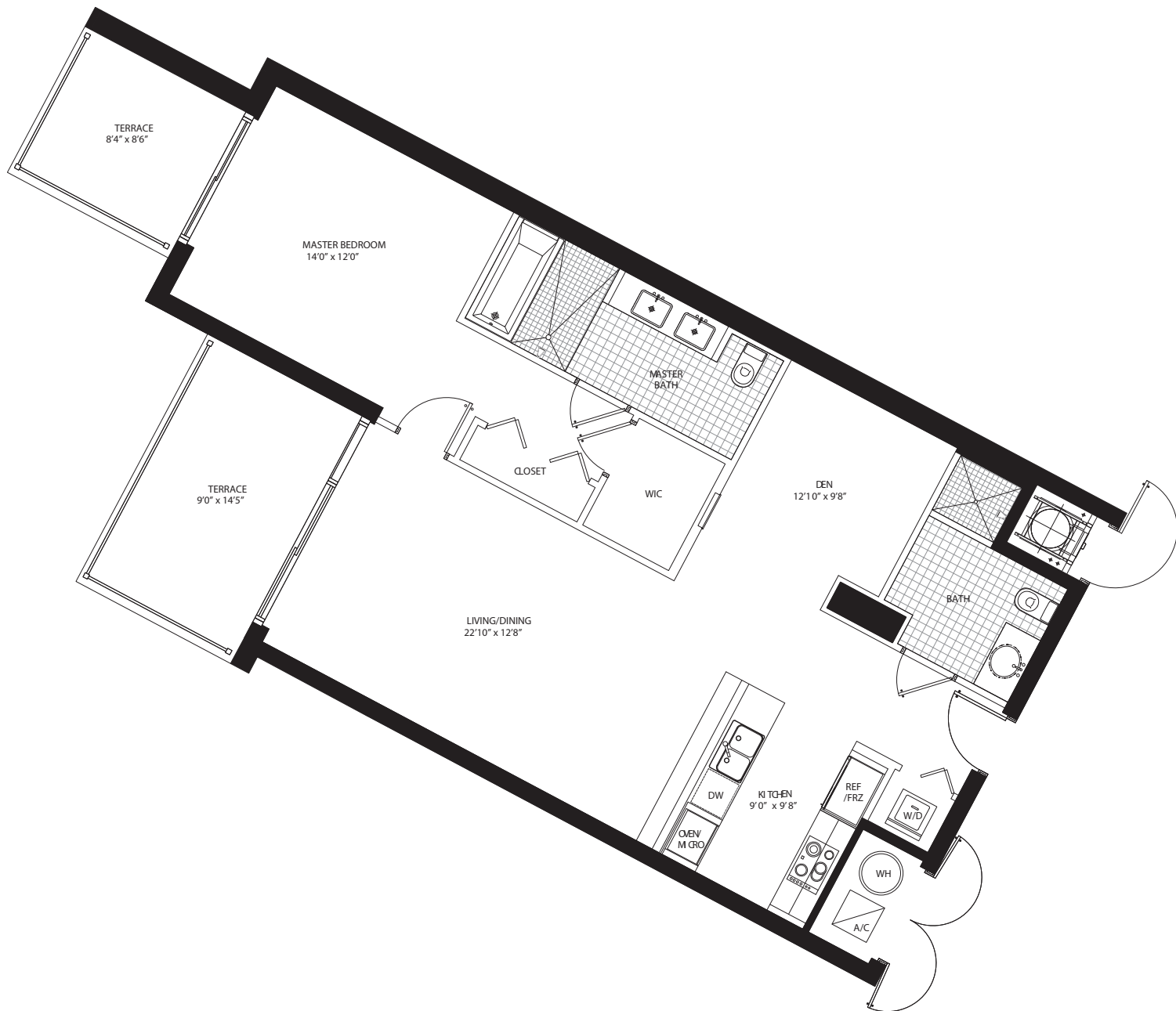


# UNIT F 1 Bedroom + Den • 2 Bath

All dimensions are approximate and all floor plans and development plans are subject to change by the developer without notice. Stated dimensions are measured to the exterior boundaries of the exterior walls and the centerline of interior demising walls and in fact vary from the dimensions that would be determined by using the description and definition of the "Unit" set forth in the Declaration (which generally only includes the interior airspace between the perimeter walls and excludes interior structural components).

Interior	1,140 sq ft	105.9 m <sup>2</sup>
Terrace	209 sq ft	19.4 m <sup>2</sup>
Total area	1,349 sq ft	125.3 m <sup>2</sup>

305-350-9842 [www.900BiscayneBayCondos.com](http://www.900BiscayneBayCondos.com)

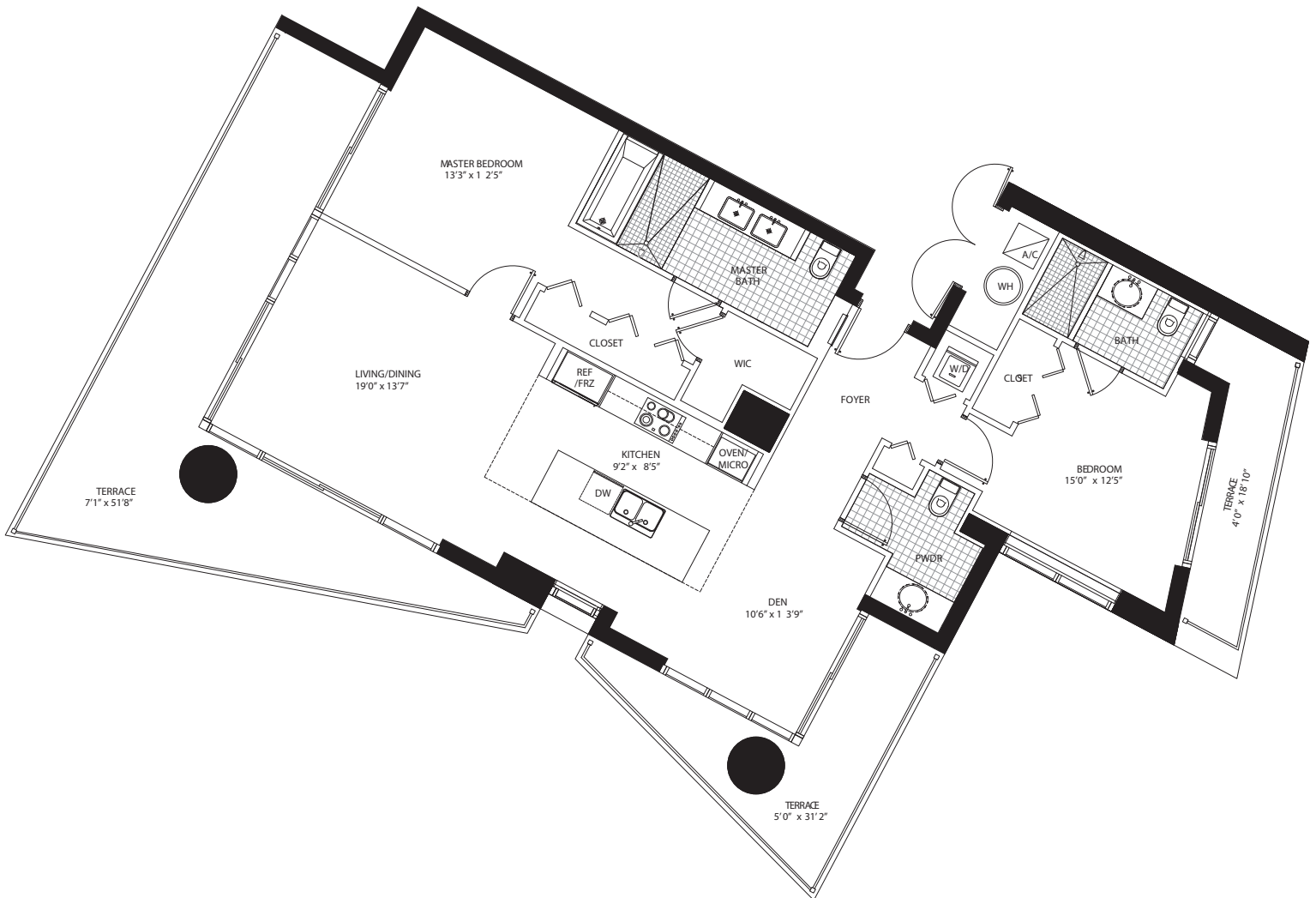


# UNIT G 2 Bedroom + Den • 2.5 Bath

All dimensions are approximate and all floor plans and development plans are subject to change by the developer without notice. Stated dimensions are measured to the exterior boundaries of the exterior walls and the centerline of interior demising walls and in fact vary from the dimensions that would be determined by using the description and definition of the "Unit" set forth in the Declaration (which generally only includes the interior airspace between the perimeter walls and excludes interior structural components).

Interior	1,355 sq ft	125.9 m <sup>2</sup>
Terrace	572 sq ft	53.0 m <sup>2</sup>
Total area	1,927 sq ft	178.9 m <sup>2</sup>

305-350-9842 [www.900BiscayneBayCondos.com](http://www.900BiscayneBayCondos.com)



# PENTHOUSE A 3 Bedroom + Den • 4.5 Bath

All dimensions are approximate and all floor plans and development plans are subject to change by the developer without notice. Stated dimensions are measured to the exterior boundaries of the exterior walls and the centerline of interior demising walls and in fact vary from the dimensions that would be determined by using the description and definition of the "Unit" set forth in the Declaration (which generally only includes the interior airspace between the perimeter walls and excludes interior structural components).

Interior	3,493 sq ft	324.5 m <sup>2</sup>
Terrace	1,225 sq ft	113.9 m <sup>2</sup>
Total area	4,718 sq ft	438.4 m <sup>2</sup>

305-350-9842 [www.900BiscayneBayCondos.com](http://www.900BiscayneBayCondos.com)



# PENTHOUSE B 3 Bedroom • 3.5 Bath

All dimensions are approximate and all floor plans and development plans are subject to change by the developer without notice. Stated dimensions are measured to the exterior boundaries of the exterior walls and the centerline of interior demising walls and in fact vary from the dimensions that would be determined by using the description and definition of the "Unit" set forth in the Declaration (which generally only includes the interior airspace between the perimeter walls and excludes interior structural components).

Interior	2,825 sq ft	262.5 m <sup>2</sup>
Terrace	655 sq ft	60.9 m <sup>2</sup>
Total area	3,480 sq ft	323.4 m <sup>2</sup>

305-350-9842 [www.900BiscayneBayCondos.com](http://www.900BiscayneBayCondos.com)



# PENTHOUSE C 3 Bedroom • 3.5 Bath

All dimensions are approximate and all floor plans and development plans are subject to change by the developer without notice. Stated dimensions are measured to the exterior boundaries of the exterior walls and the centerline of interior demising walls and in fact vary from the dimensions that would be determined by using the description and definition of the "Unit" set forth in the Declaration (which generally only includes the interior airspace between the perimeter walls and excludes interior structural components).

Interior	2,825 sq ft	262.5 m <sup>2</sup>
Terrace	638 sq ft	59.3 m <sup>2</sup>
Total area	3,463 sq ft	321.8 m <sup>2</sup>

305-350-9842 [www.900BiscayneBayCondos.com](http://www.900BiscayneBayCondos.com)

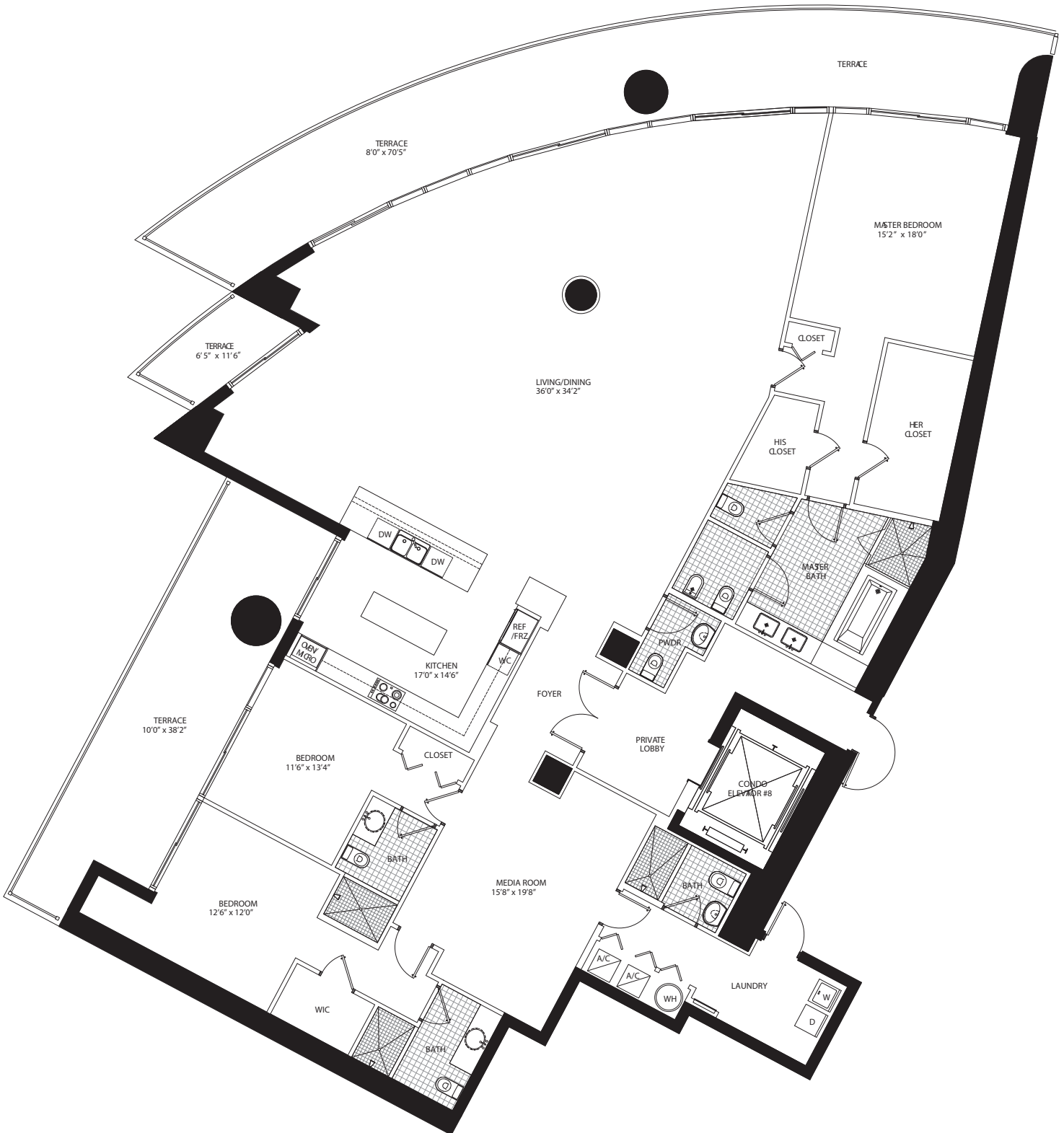


# PENTHOUSE D 3 Bedroom • 4.5 Bath

All dimensions are approximate and all floor plans and development plans are subject to change by the developer without notice. Stated dimensions are measured to the exterior boundaries of the exterior walls and the centerline of interior demising walls and in fact vary from the dimensions that would be determined by using the description and definition of the "Unit" set forth in the Declaration (which generally only includes the interior airspace between the perimeter walls and excludes interior structural components).

Interior	3,793 sq ft	352.7 m <sup>2</sup>
Terrace	991 sq ft	92.2 m <sup>2</sup>
Total area	4,784 sq ft	449.9 m <sup>2</sup>

305-350-9842 [www.900BiscayneBayCondos.com](http://www.900BiscayneBayCondos.com)

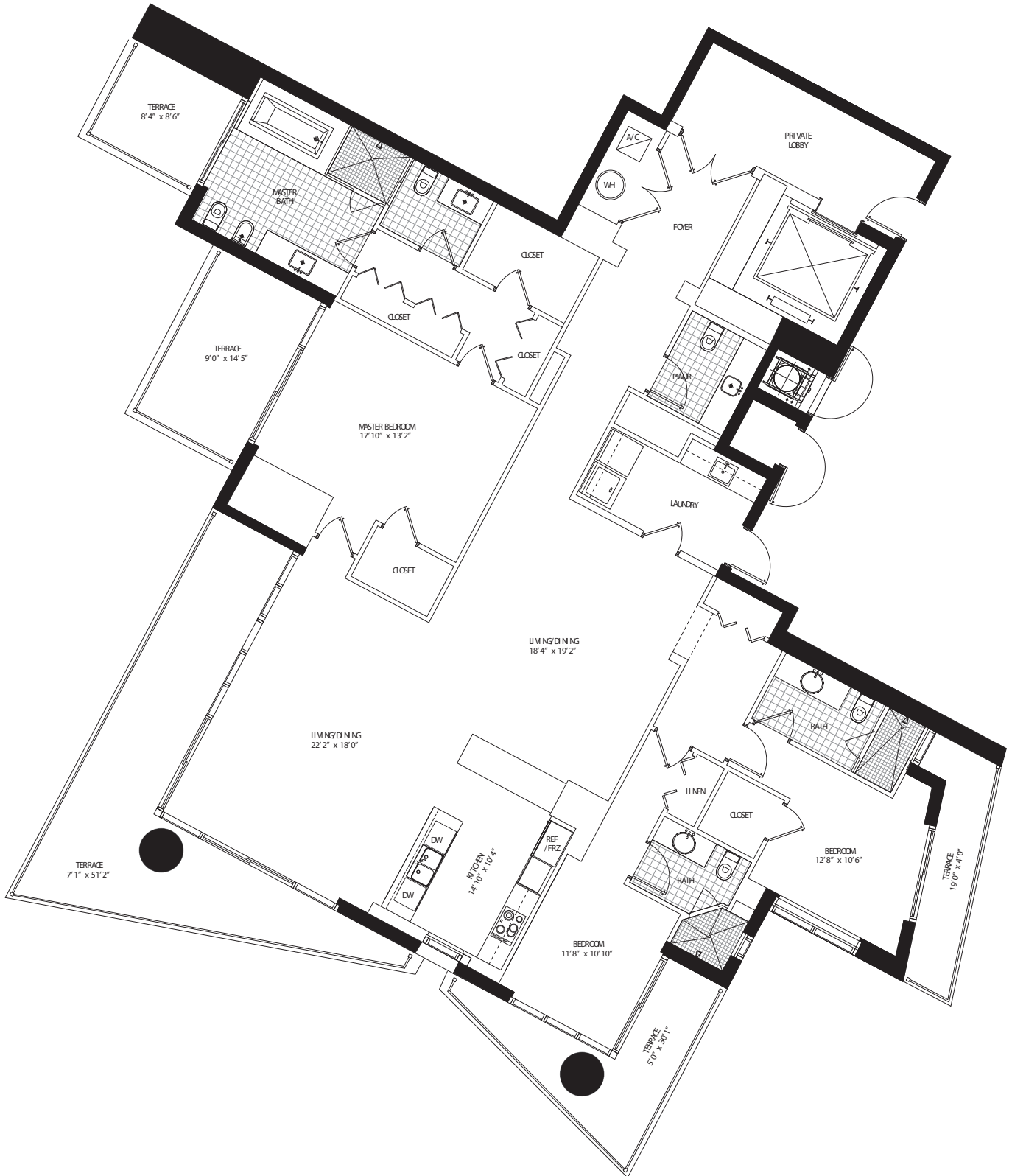


# PENTHOUSE E 3 Bedroom • 3.5 Bath

All dimensions are approximate and all floor plans and development plans are subject to change by the developer without notice. Stated dimensions are measured to the exterior boundaries of the exterior walls and the centerline of interior demising walls and in fact vary from the dimensions that would be determined by using the description and definition of the "Unit" set forth in the Declaration (which generally only includes the interior airspace between the perimeter walls and excludes interior structural components).

Interior	2,815 sq ft	261.5 m <sup>2</sup>
Terrace	759 sq ft	70.6 m <sup>2</sup>
Total area	3,574 sq ft	332.1 m <sup>2</sup>

305-350-9842 [www.900BiscayneBayCondos.com](http://www.900BiscayneBayCondos.com)



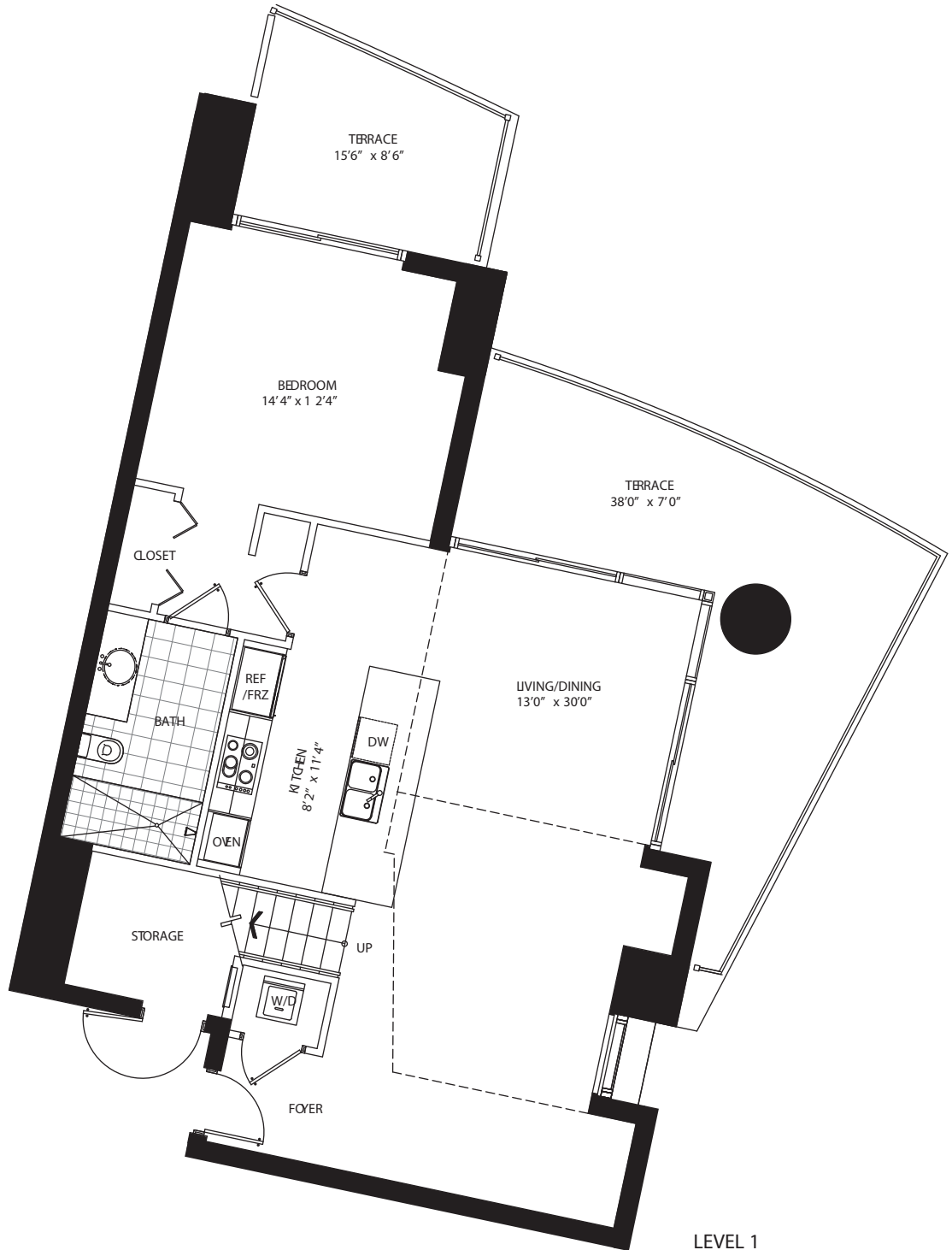


# TOWNHOME A 2 Bedroom + Den • 3 Bath

All dimensions are approximate and all floor plans and development plans are subject to change by the developer without notice. Stated dimensions are measured to the exterior boundaries of the exterior walls and the centerline of interior demising walls and in fact vary from the dimensions that would be determined by using the description and definition of the "Unit" set forth in the Declaration (which generally only includes the interior airspace between the perimeter walls and excludes interior structural components).

Interior	1,982 sq ft	184.3 m <sup>2</sup>
Terrace	527 sq ft	49.0 m <sup>2</sup>
Total area	2,509 sq ft	233.3 m <sup>2</sup>

305-350-9842 [www.900BiscayneBayCondos.com](http://www.900BiscayneBayCondos.com)



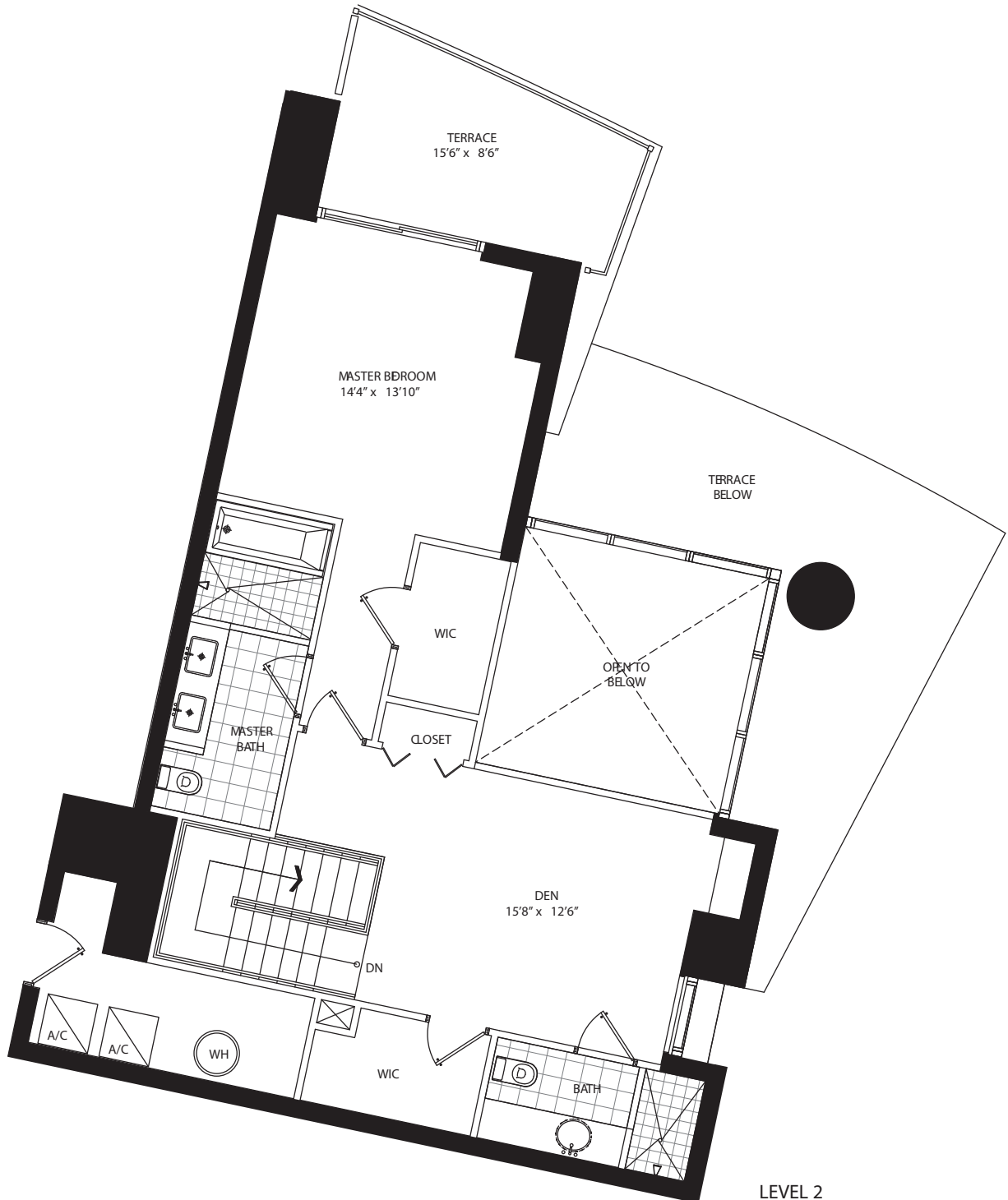
LEVEL 1

# TOWNHOME A 2 Bedroom + Den • 3 Bath

All dimensions are approximate and all floor plans and development plans are subject to change by the developer without notice. Stated dimensions are measured to the exterior boundaries of the exterior walls and the centerline of interior demising walls and in fact vary from the dimensions that would be determined by using the description and definition of the "Unit" set forth in the Declaration (which generally only includes the interior airspace between the perimeter walls and excludes interior structural components).

Interior	1,982 sq ft	184.3 m <sup>2</sup>
Terrace	527 sq ft	49.0 m <sup>2</sup>
Total area	2,509 sq ft	233.3 m <sup>2</sup>

305-350-9842 [www.900BiscayneBayCondos.com](http://www.900BiscayneBayCondos.com)



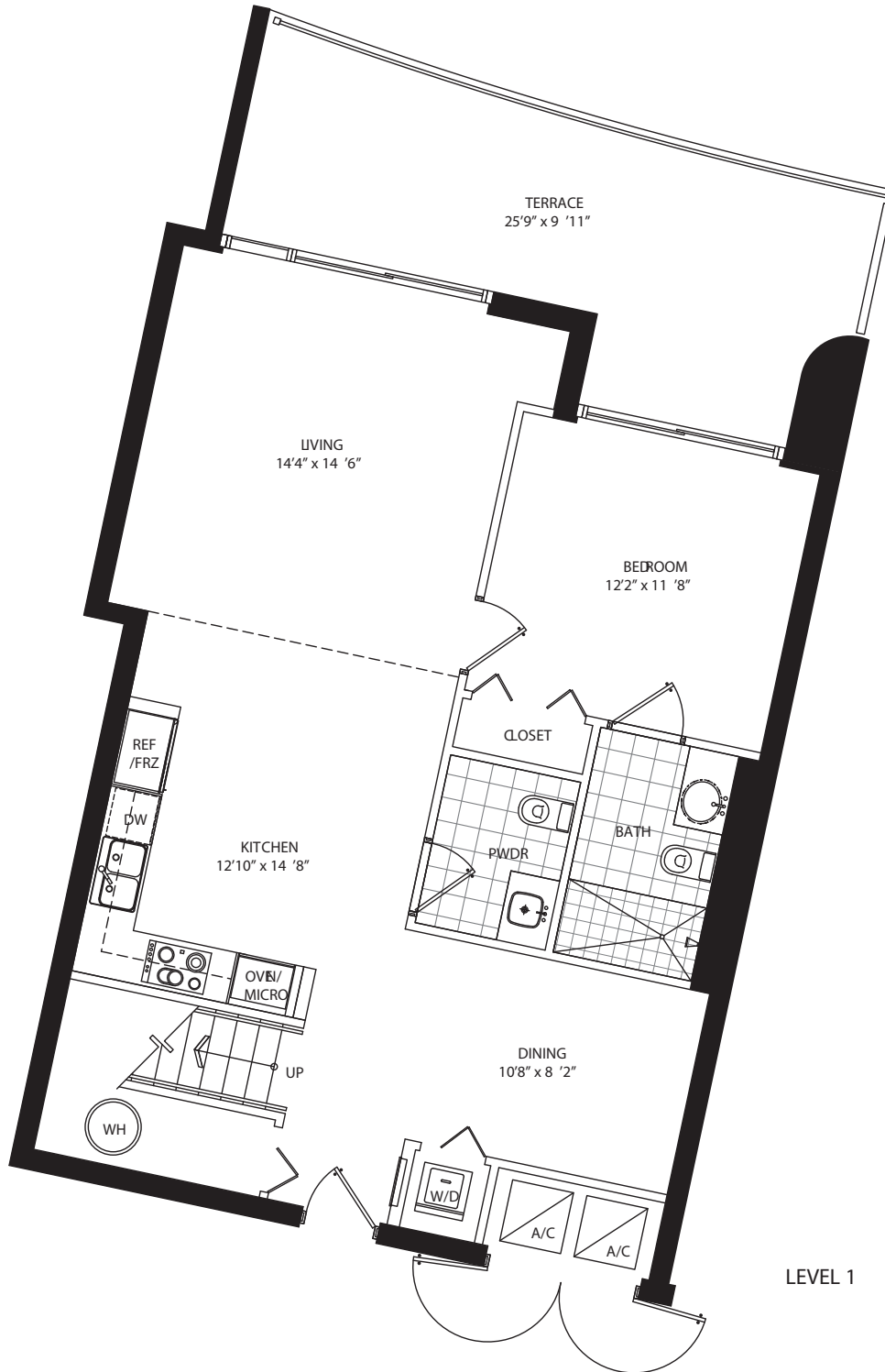
LEVEL 2

# TOWNHOME CR 2 Bedroom + Den • 2.5 Bath

All dimensions are approximate and all floor plans and development plans are subject to change by the developer without notice. Stated dimensions are measured to the exterior boundaries of the exterior walls and the centerline of interior demising walls and in fact vary from the dimensions that would be determined by using the description and definition of the "Unit" set forth in the Declaration (which generally only includes the interior airspace between the perimeter walls and excludes interior structural components).

Interior	1,711 sq ft	159.1 m <sup>2</sup>
Terrace	365 sq ft	33.9 m <sup>2</sup>
Total area	2,076 sq ft	193.0 m <sup>2</sup>

305-350-9842 [www.900BiscayneBayCondos.com](http://www.900BiscayneBayCondos.com)



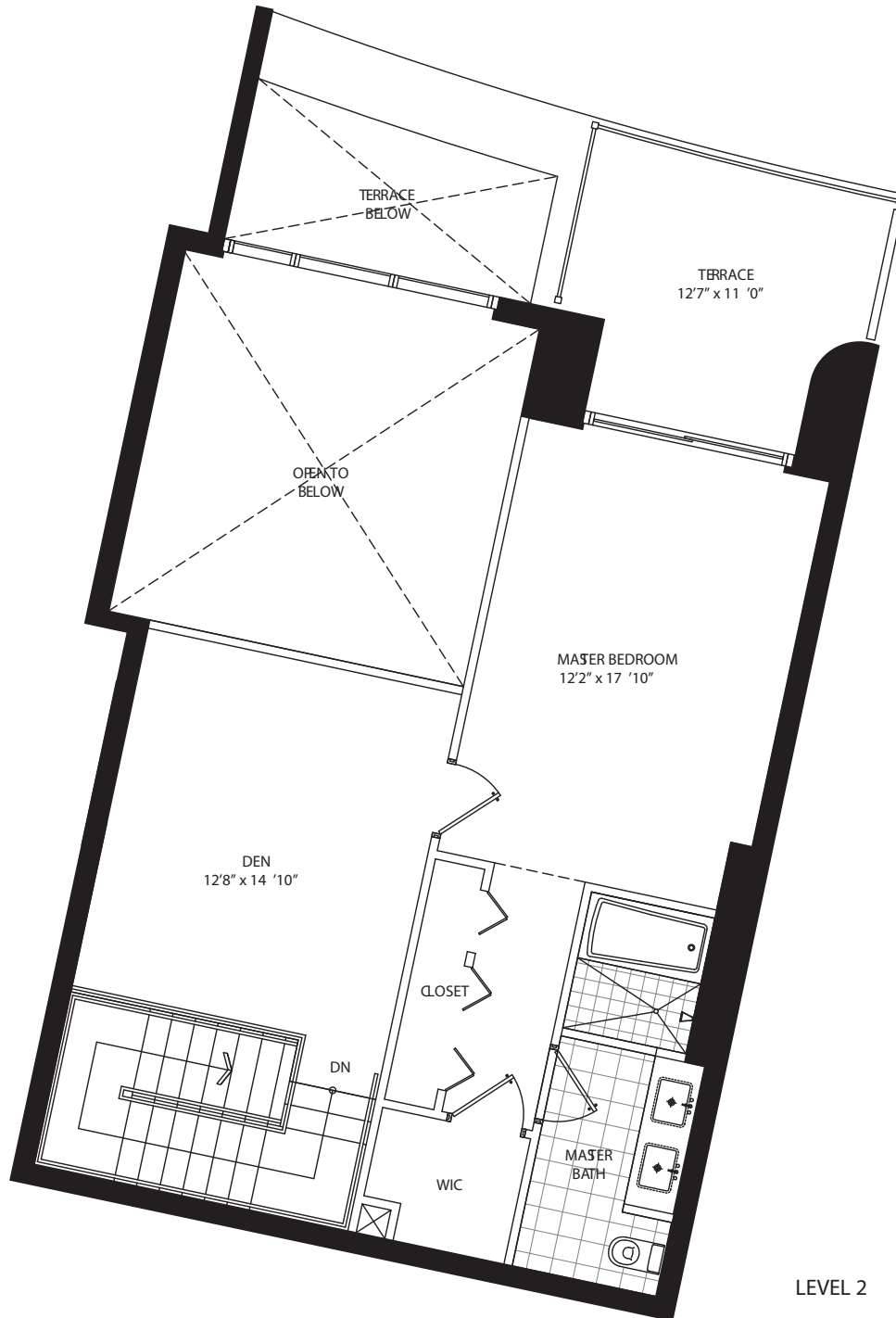
LEVEL 1

# TOWNHOME CR 2 Bedroom + Den • 2.5 Bath

All dimensions are approximate and all floor plans and development plans are subject to change by the developer without notice. Stated dimensions are measured to the exterior boundaries of the exterior walls and the centerline of interior demising walls and in fact vary from the dimensions that would be determined by using the description and definition of the "Unit" set forth in the Declaration (which generally only includes the interior airspace between the perimeter walls and excludes interior structural components).

Interior	1,711 sq ft	159.1 m <sup>2</sup>
Terrace	365 sq ft	33.9 m <sup>2</sup>
Total area	2,076 sq ft	193.0 m <sup>2</sup>

305-350-9842 [www.900BiscayneBayCondos.com](http://www.900BiscayneBayCondos.com)



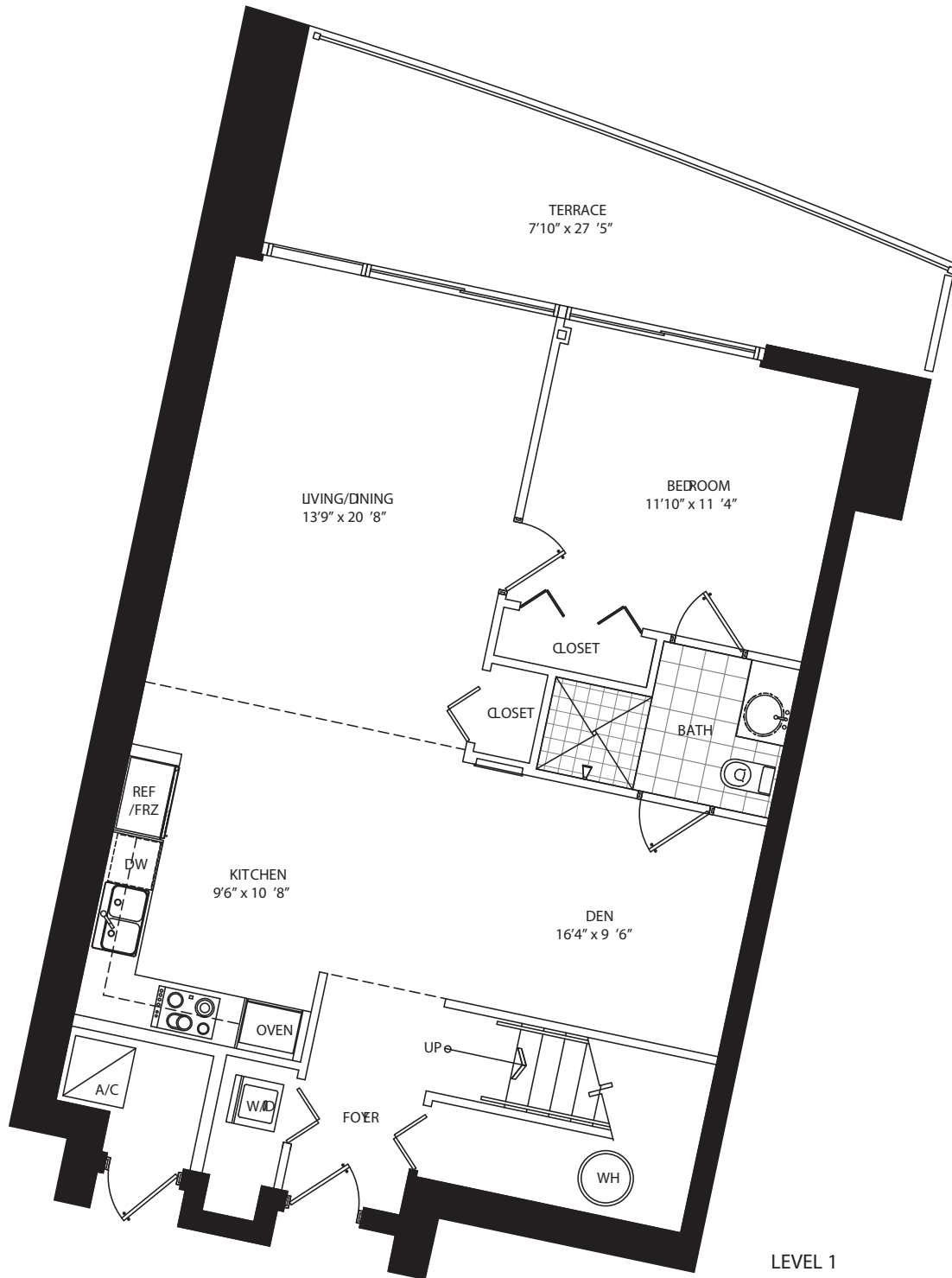
LEVEL 2

# TOWNHOME B1 2 Bedroom + Den • 3 Bath

All dimensions are approximate and all floor plans and development plans are subject to change by the developer without notice. Stated dimensions are measured to the exterior boundaries of the exterior walls and the centerline of interior demising walls and in fact vary from the dimensions that would be determined by using the description and definition of the "Unit" set forth in the Declaration (which generally only includes the interior airspace between the perimeter walls and excludes interior structural components).

Interior	1,694 sq ft	157.5 m <sup>2</sup>
Terrace	295 sq ft	27.4 m <sup>2</sup>
Total area	1,989 sq ft	184.9 m <sup>2</sup>

305-350-9842 [www.900BiscayneBayCondos.com](http://www.900BiscayneBayCondos.com)



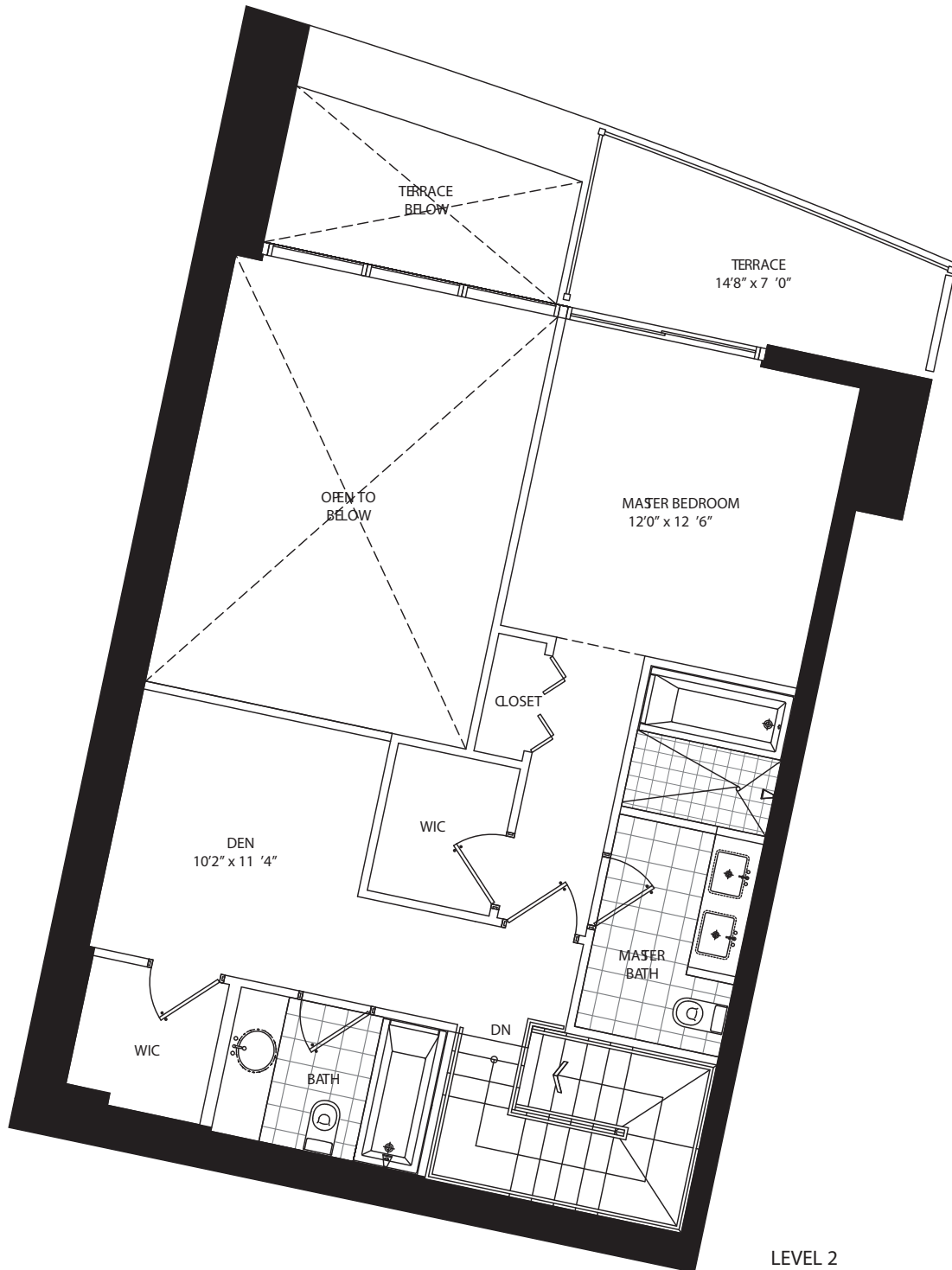
LEVEL 1

# TOWNHOME B1 2 Bedroom + Den • 3 Bath

All dimensions are approximate and all floor plans and development plans are subject to change by the developer without notice. Stated dimensions are measured to the exterior boundaries of the exterior walls and the centerline of interior demising walls and in fact vary from the dimensions that would be determined by using the description and definition of the "Unit" set forth in the Declaration (which generally only includes the interior airspace between the perimeter walls and excludes interior structural components).

Interior	1,694 sq ft	157.5 m <sup>2</sup>
Terrace	295 sq ft	27.4 m <sup>2</sup>
<b>Total area</b>	<b>1,989 sq ft</b>	<b>184.9 m<sup>2</sup></b>

305-350-9842 [www.900BiscayneBayCondos.com](http://www.900BiscayneBayCondos.com)



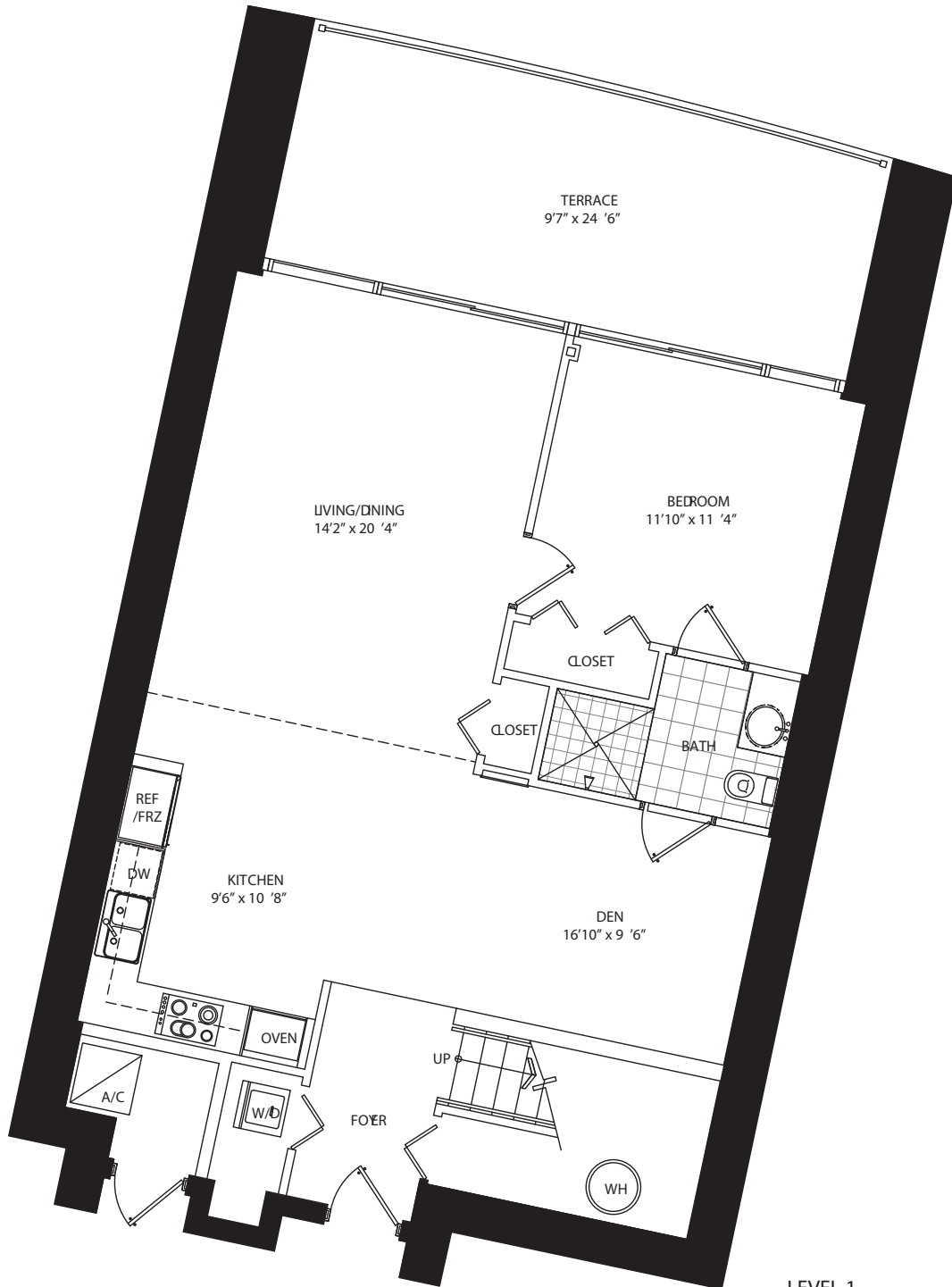
LEVEL 2

# TOWNHOME B2 2 Bedroom + Den • 3 Bath

All dimensions are approximate and all floor plans and development plans are subject to change by the developer without notice. Stated dimensions are measured to the exterior boundaries of the exterior walls and the centerline of interior demising walls and in fact vary from the dimensions that would be determined by using the description and definition of the "Unit" set forth in the Declaration (which generally only includes the interior airspace between the perimeter walls and excludes interior structural components).

Interior	1,737 sq ft	161.5 m <sup>2</sup>
Terrace	353 sq ft	32.8 m <sup>2</sup>
Total area	2,090 sq ft	194.3 m <sup>2</sup>

305-350-9842 [www.900BiscayneBayCondos.com](http://www.900BiscayneBayCondos.com)



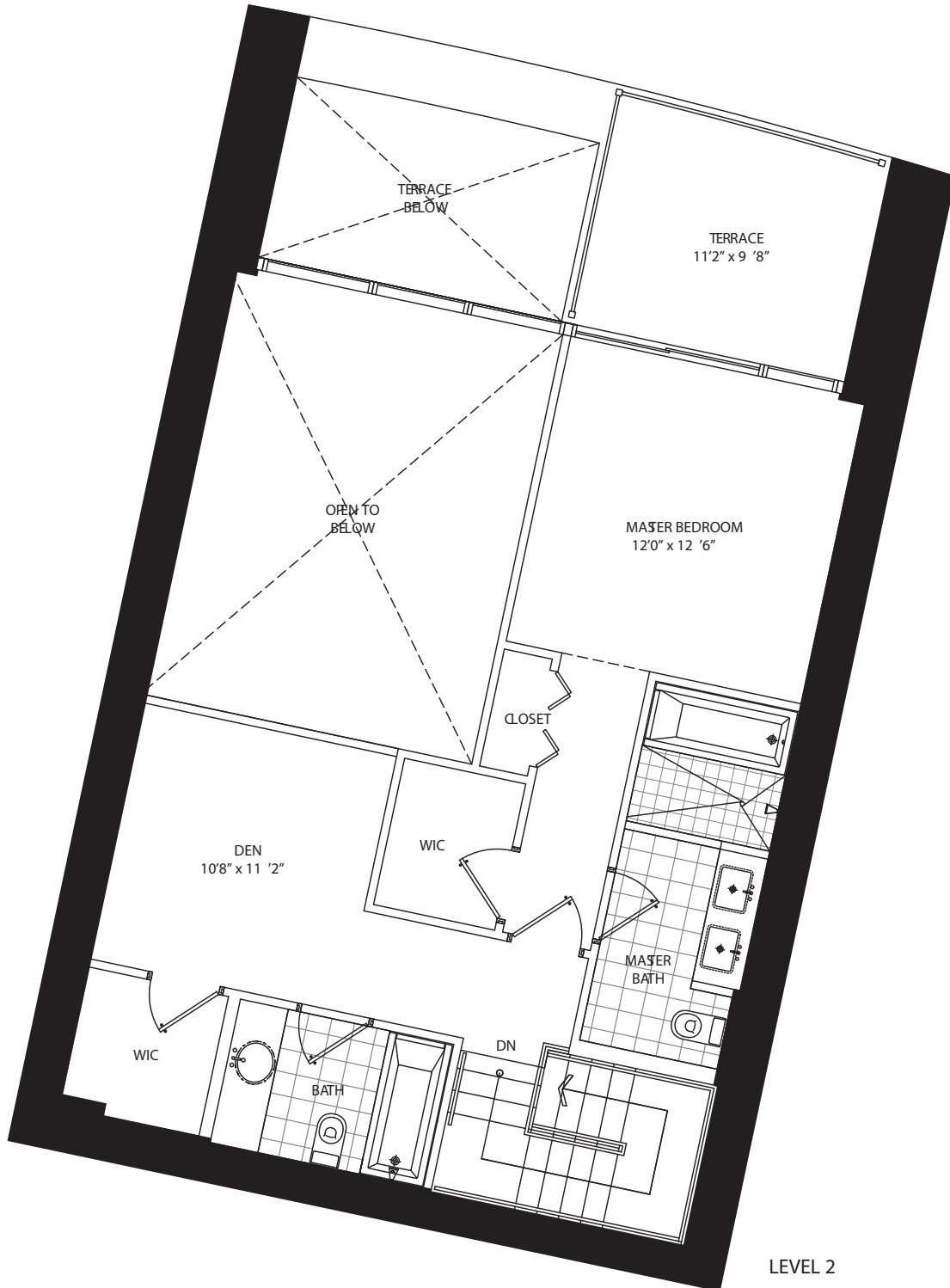
LEVEL 1

# TOWNHOME B2 2 Bedroom + Den • 3 Bath

All dimensions are approximate and all floor plans and development plans are subject to change by the developer without notice. Stated dimensions are measured to the exterior boundaries of the exterior walls and the centerline of interior demising walls and in fact vary from the dimensions that would be determined by using the description and definition of the "Unit" set forth in the Declaration (which generally only includes the interior airspace between the perimeter walls and excludes interior structural components).

Interior	1,737 sq ft	161.5 m <sup>2</sup>
Terrace	353 sq ft	32.8 m <sup>2</sup>
Total area	2,090 sq ft	194.3 m <sup>2</sup>

305-350-9842 [www.900BiscayneBayCondos.com](http://www.900BiscayneBayCondos.com)



LEVEL 2

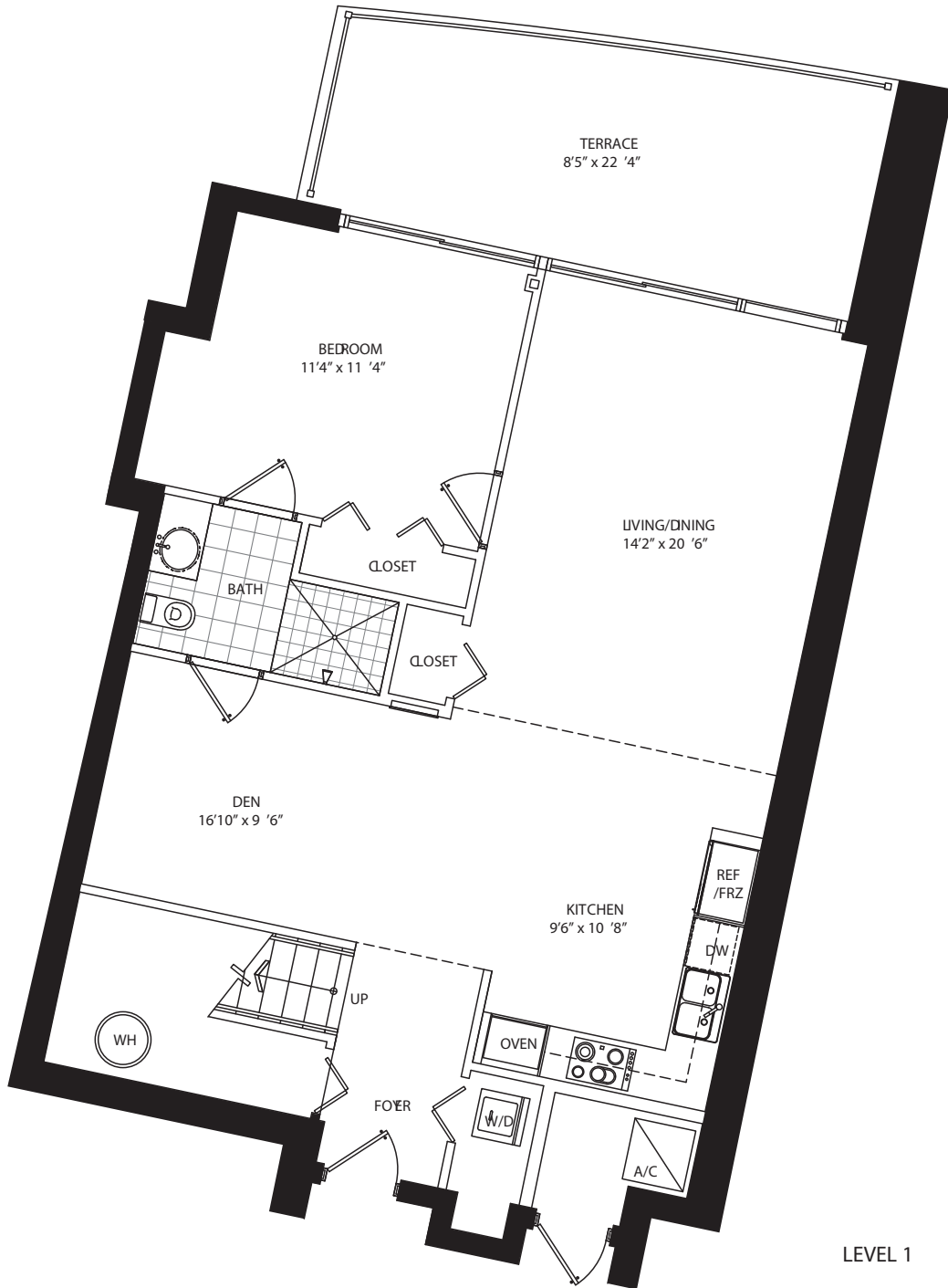


# TOWNHOME B3 2 Bedroom + Den • 3 Bath

All dimensions are approximate and all floor plans and development plans are subject to change by the developer without notice. Stated dimensions are measured to the exterior boundaries of the exterior walls and the centerline of interior demising walls and in fact vary from the dimensions that would be determined by using the description and definition of the "Unit" set forth in the Declaration (which generally only includes the interior airspace between the perimeter walls and excludes interior structural components).

Interior	1,768 sq ft	164.4 m <sup>2</sup>
Terrace	296 sq ft	27.5 m <sup>2</sup>
<b>Total area</b>	<b>2,064 sq ft</b>	<b>191.9 m<sup>2</sup></b>

305-350-9842 [www.900BiscayneBayCondos.com](http://www.900BiscayneBayCondos.com)



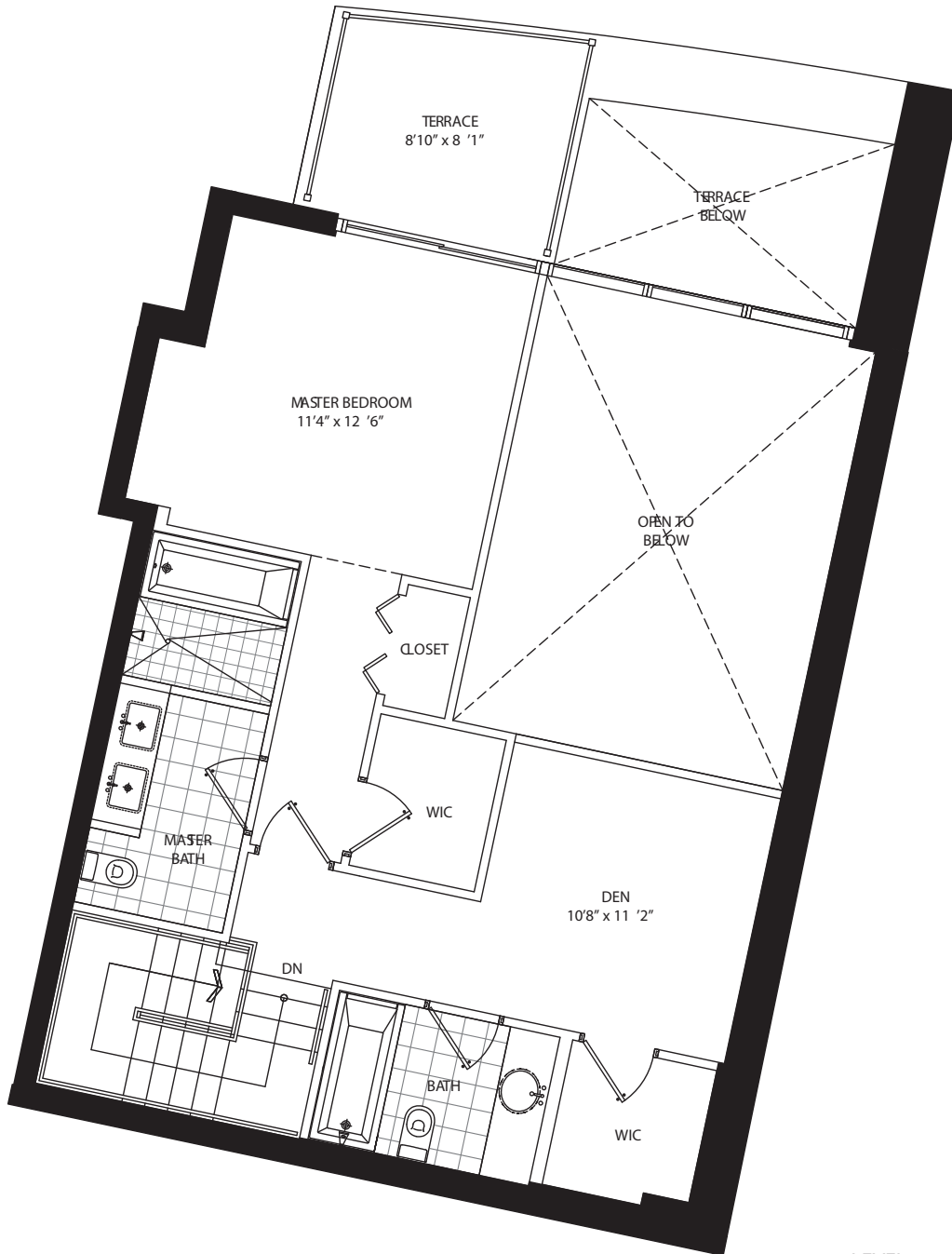
LEVEL 1

# TOWNHOME B3 2 Bedroom + Den • 3 Bath

All dimensions are approximate and all floor plans and development plans are subject to change by the developer without notice. Stated dimensions are measured to the exterior boundaries of the exterior walls and the centerline of interior demising walls and in fact vary from the dimensions that would be determined by using the description and definition of the "Unit" set forth in the Declaration (which generally only includes the interior airspace between the perimeter walls and excludes interior structural components).

Interior	1,768 sq ft	164.4 m <sup>2</sup>
Terrace	296 sq ft	27.5 m <sup>2</sup>
<b>Total area</b>	<b>2,064 sq ft</b>	<b>191.9 m<sup>2</sup></b>

305-350-9842 [www.900BiscayneBayCondos.com](http://www.900BiscayneBayCondos.com)



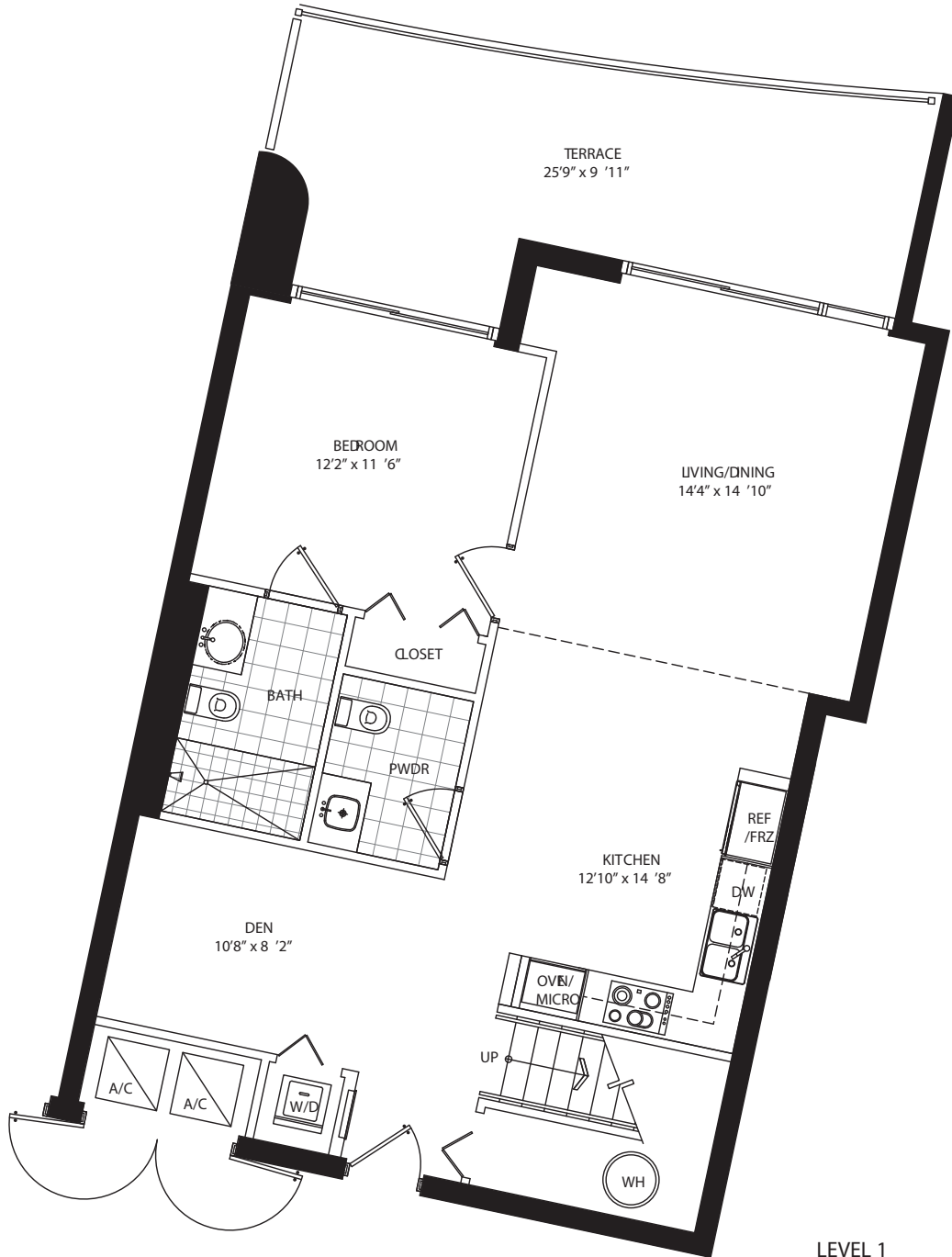
LEVEL 2

# TOWNHOME C 2 Bedroom + Den • 2.5 Bath

All dimensions are approximate and all floor plans and development plans are subject to change by the developer without notice. Stated dimensions are measured to the exterior boundaries of the exterior walls and the centerline of interior demising walls and in fact vary from the dimensions that would be determined by using the description and definition of the "Unit" set forth in the Declaration (which generally only includes the interior airspace between the perimeter walls and excludes interior structural components).

Interior	1,711 sq ft	159.1 m <sup>2</sup>
Terrace	365 sq ft	33.9 m <sup>2</sup>
Total area	2,076 sq ft	193.0 m <sup>2</sup>

305-350-9842 [www.900BiscayneBayCondos.com](http://www.900BiscayneBayCondos.com)



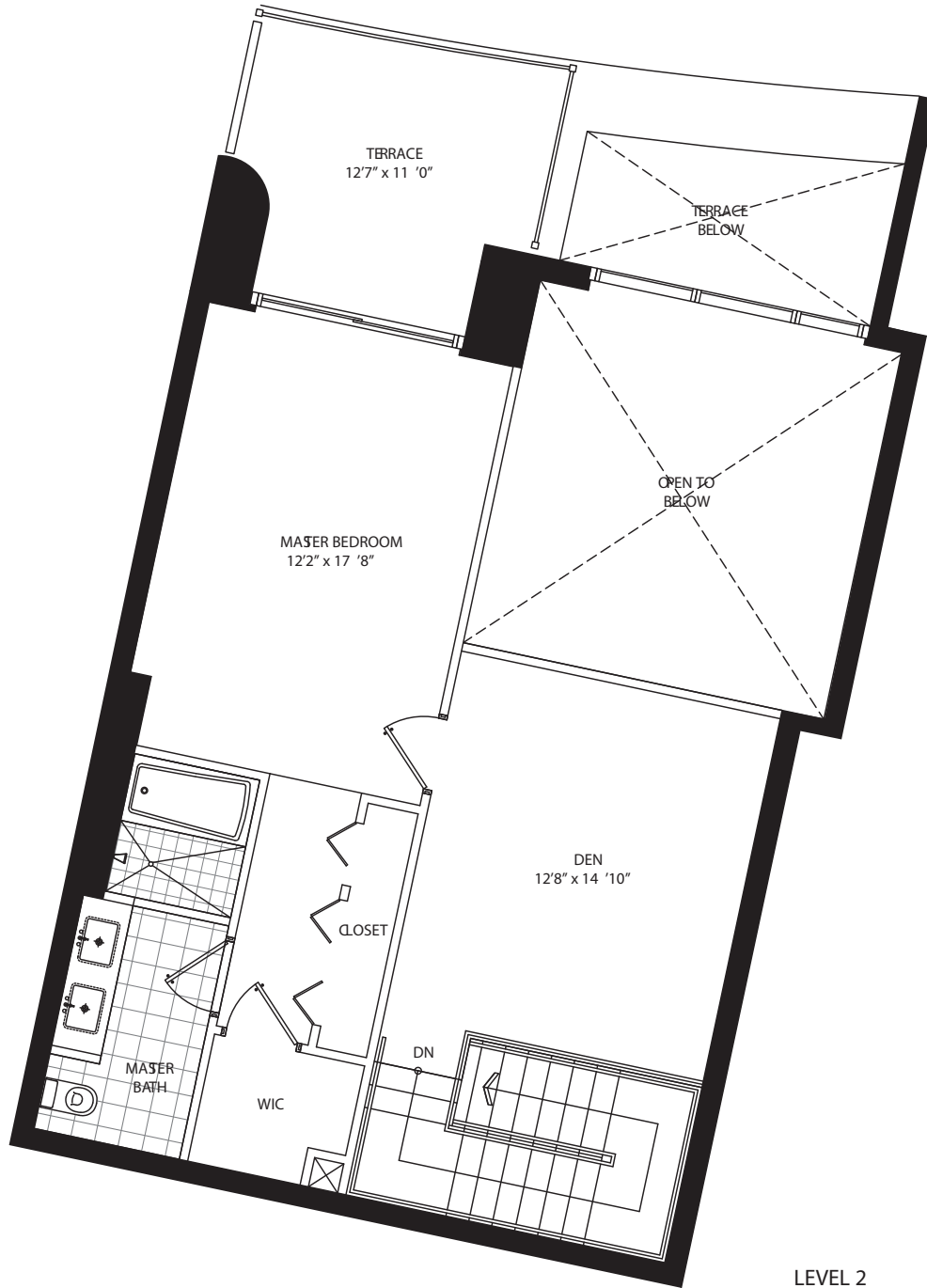
LEVEL 1

# TOWNHOME C 2 Bedroom + Den • 2.5 Bath

All dimensions are approximate and all floor plans and development plans are subject to change by the developer without notice. Stated dimensions are measured to the exterior boundaries of the exterior walls and the centerline of interior demising walls and in fact vary from the dimensions that would be determined by using the description and definition of the "Unit" set forth in the Declaration (which generally only includes the interior airspace between the perimeter walls and excludes interior structural components).

Interior	1,711 sq ft	159.1 m <sup>2</sup>
Terrace	365 sq ft	33.9 m <sup>2</sup>
Total area	2,076 sq ft	193.0 m <sup>2</sup>

305-350-9842 [www.900BiscayneBayCondos.com](http://www.900BiscayneBayCondos.com)



LEVEL 2